
BIOLOGICAL PLANNING

U. S. Fish & Wildlife Service

Presented to the

LESSARD OUTDOOR HERITAGE COUNCIL

January 26, 2009

- 1) **Continental Planning** – North American Waterfowl Management Plan (Attachment 1).
 - a. Goal: To restore continental waterfowl populations to levels of the mid-1980's.
 - b. Established “Joint Ventures” to deliver on-the-ground conservation projects. (Attachment 2).

- 2) **Multi-State Planning** – Prairie Pothole Joint Venture
 - a. Population Objective: 10 million duck pairs
 - b. Habitat Objective: 12 million acres of habitat
 - i) 1.4 million acres of wetlands, and,
 - ii) 10.8 million acres of grassland

- 3) **Landscape Level Planning** – Habitat and Population Evaluation Team (HAPET)
 - a. Duck Recruitment Potential (Attachment 3)
 - b. Restorable Wetland Inventory (Attachment 4)

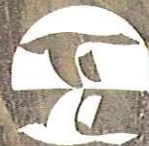
- 4) Do we know where and how to restore and protect wetlands and grasslands in Minnesota?
 - a. The simple answer to this rhetorical question is YES!
 - b. With the passage of the Minnesota Outdoor Heritage Amendment, the citizens of Minnesota have provided a means!

NORTH AMERICAN
WATERFOWL
MANAGEMENT PLAN

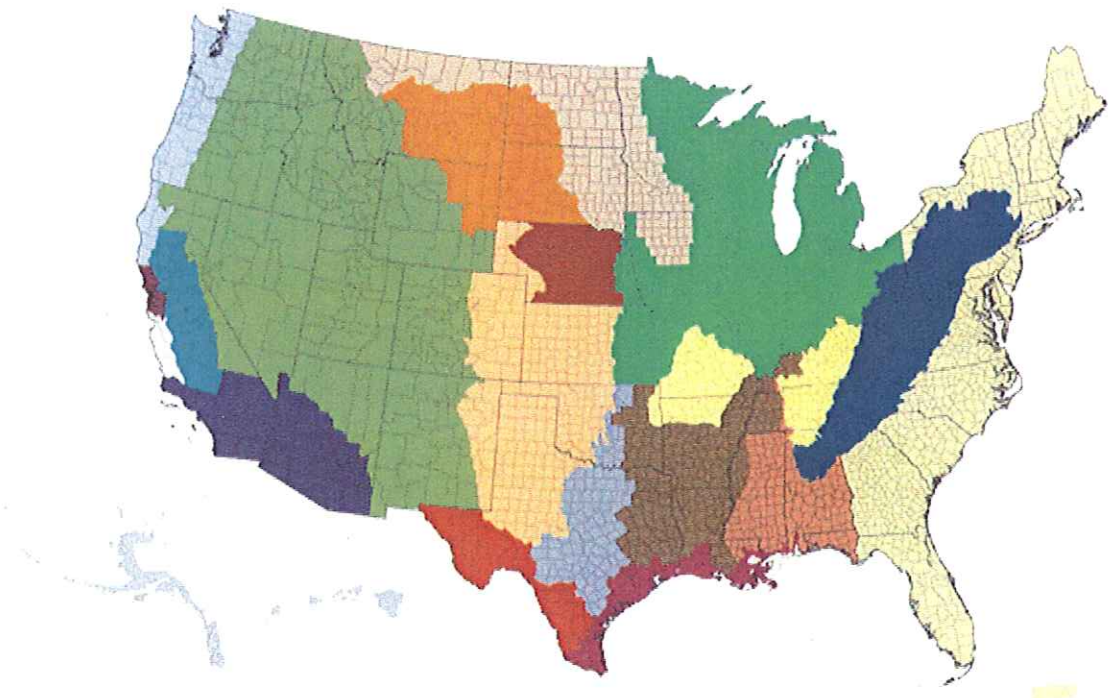


STRENGTHENING the BIOLOGICAL FOUNDATION

2004
Strategic
Guidance



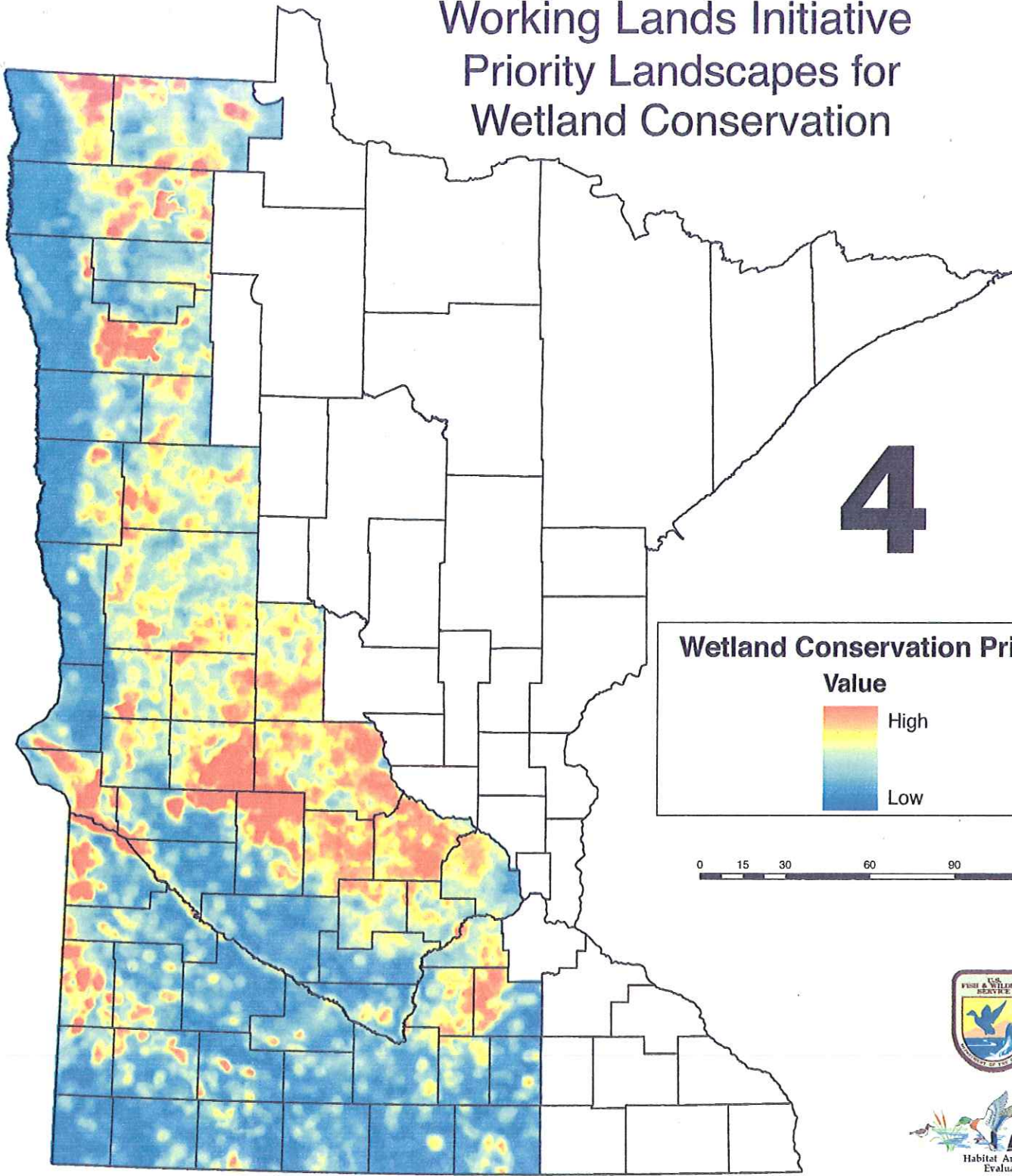
*North American Waterfowl
Management Plan
Plan nord-américain de
gestion de la sauvagine
Plan de Manejo de Aves
Acuáticas de Norteamérica*



Legend

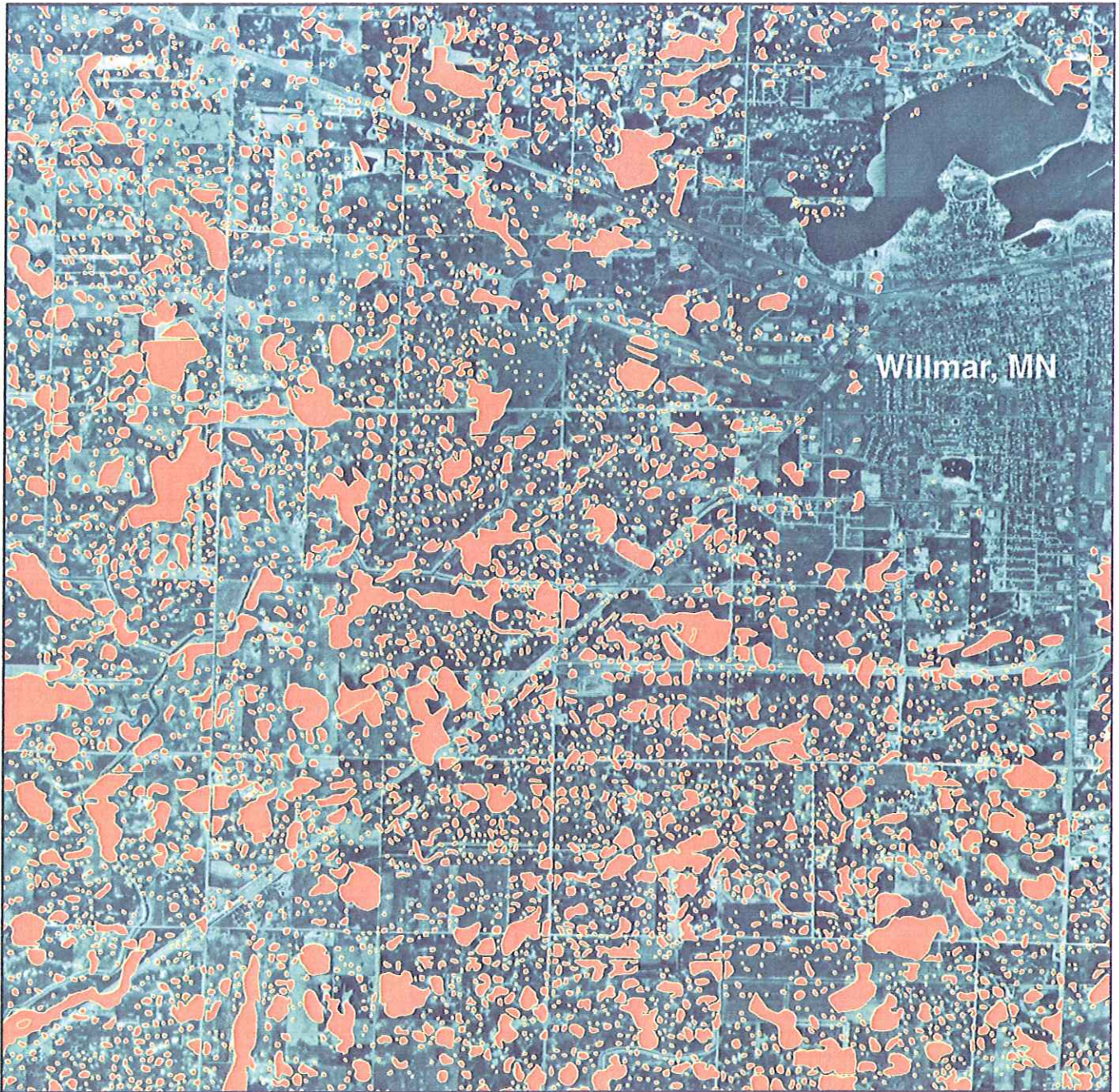
- | | | | |
|-----------------------|--------------------------|-------------------|--|
| County | East Gulf Coastal Plain | Oaks and Prairies | Rio Grande |
| Appalachian Mountains | Gulf Coast | Pacific Coast | San Francisco Bay |
| Atlantic Coast | Intermountain West | Playa Lakes | Sonoran |
| Central Hardwoods | Lower Mississippi Valley | Prairie Pothole | Upper Mississippi River/Great Lakes Region |
| Central Valley | Northern Great Plains | Rainwater Basin | |


Working Lands Initiative Priority Landscapes for Wetland Conservation



Restorable Wetlands Inventory

Kandiyohi County near Willmar, MN



 Restorable Wetlands
(Wetlands circa 1870)

