

2008 RIM Reserve Outcomes: Wetland and Grassland Restoration

The premier private lands wetland restoration easement program in the nation is a partnership of Minnesota's Reinvest in Minnesota (RIM) Reserve and USDA (NRCS) Wetlands Reserve Program (WRP).

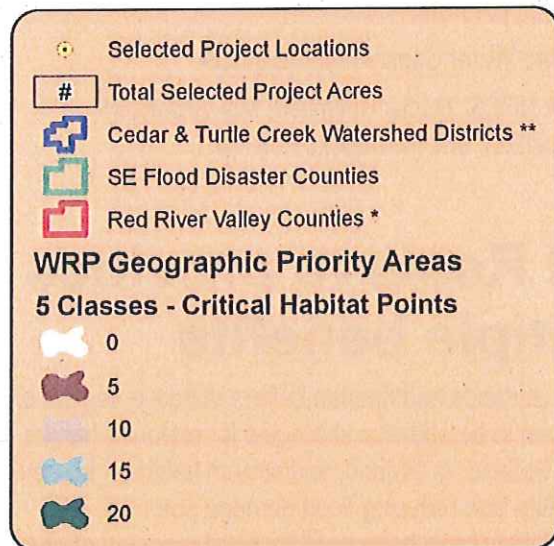
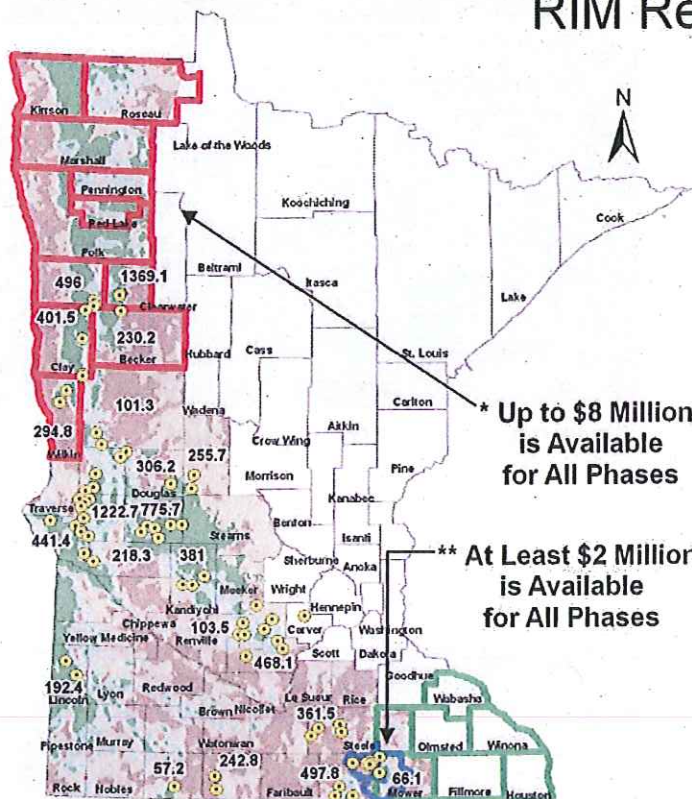
Combining RIM Reserve and WRP allows state funds to leverage Federal Farm Bill conservation dollars. Utilizing both programs results in competitive payment rates to landowners and sharing of restoration costs.

2008 RIM/WRP Outcomes:

- \$14.2 million of RIM with \$19.1 million of WRP will restore wetlands and adjacent grasslands on 9,775 acres in 2008.
- Minnesota received almost 20% of the nation's WRP funds in 2008 - the first phase of the RIM-WRP partnership.

RIM Reserve / WRP Partnership Phase I Funded Projects

98 Selected Projects
Totaling 9,775 Acres



October 2008



Conservation benefits

- Retires environmentally sensitive land
- Protects and improves water quality
- Reduces soil erosion
- Enhances fish and wildlife habitat
- Sequesters carbon
- Biofuel production potential

Economic benefits

\$35 million in state dollars for wetland restoration projects in 2008 created and/or supported 1,329 full-time jobs in Minnesota when coupled with federal funding at a 1.4:1 ratio.

(Source: "Assessing the Economic Impact of WRP on the Minnesota Economy," USDA NRCS, January 2008).

2009 RIM Reserve Potential Outcomes

RIM / WRP leverages \$1.4 federal for every \$1 of state funds

\$15 million in USDA funds will be available per year starting in 2009 if state dollars for RIM Reserve are available. These dollars are used for the following:

- Payments to participating landowners who voluntarily enroll land in a 30-year WRP easement and a perpetual RIM Reserve easement
- Payments to local government partners and contractors for costs associated with the restoration work (realty, engineering, soils and structures, vegetation establishment, etc.)

Conservation outcomes are achieved through BWSR and conservation partners:

- Soil and Water Conservation Districts
- USDA NRCS, Ducks Unlimited, MN Waterfowl Association, and Pheasants Forever

RIM Reserve provides multiple benefits

Restored wetlands and riparian buffers of native vegetation have proven to be effective strategies for restoring habitat -- including wetland, grassland, and stream habitat -- improving water quality, and reducing flood damage potential. RIM Reserve dollars have been used for flood recovery efforts in SE Minnesota, and to provide solutions to other flood-prone areas in the state.

For more information:

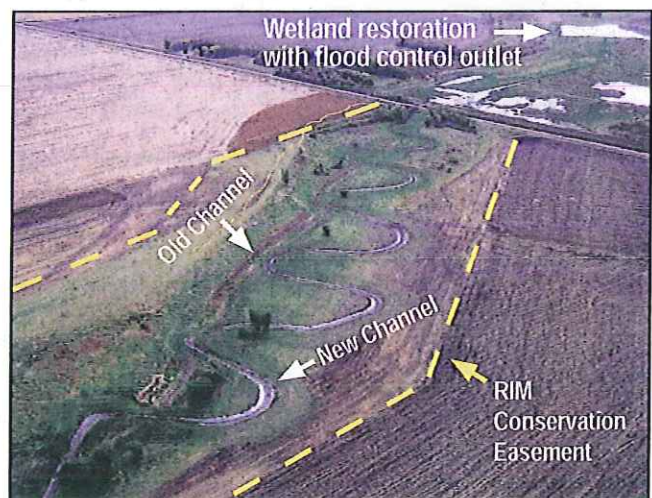
John Jaschke, BWSR Executive Director
(651) 296-0878

Kevin Lines, BWSR Easement Manager
(651) 297-1894

January 2009



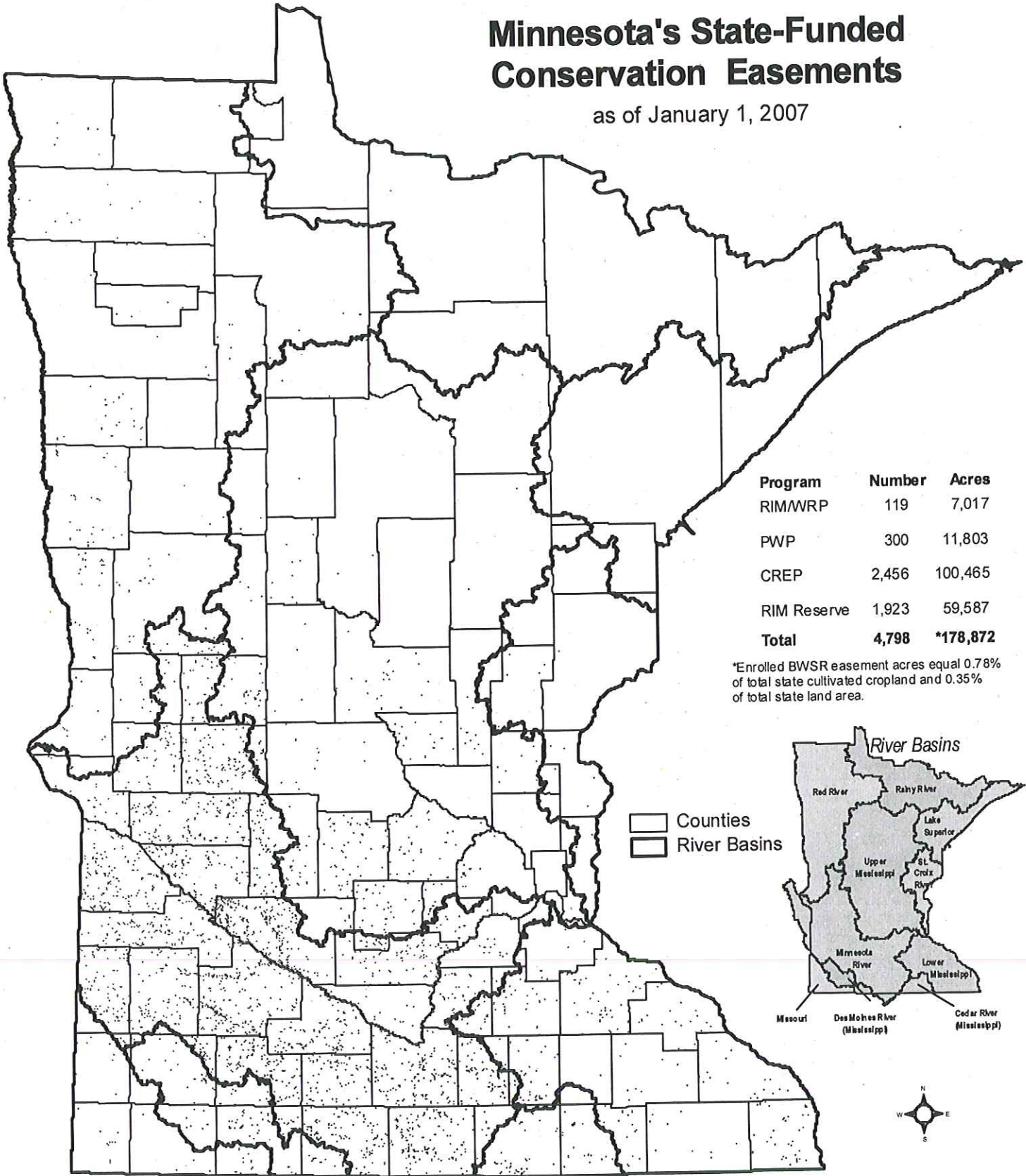
Wetland restoration in Nicollet County



Dalen Coulee restoration, Clay and Norman counties and Wild Rice Watershed District

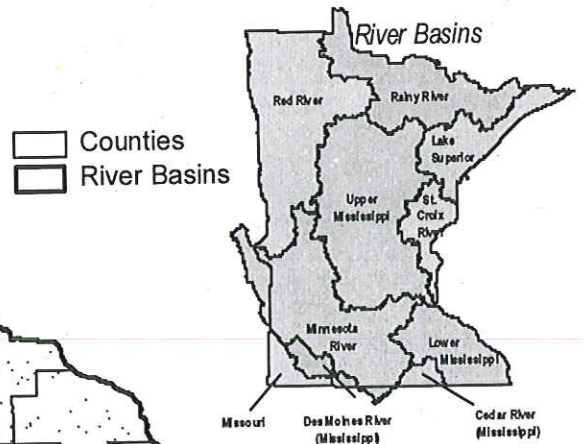
Minnesota's State-Funded Conservation Easements

as of January 1, 2007



Program	Number	Acres
RIM/WRP	119	7,017
PWP	300	11,803
CREP	2,456	100,465
RIM Reserve	1,923	59,587
Total	4,798	*178,872

*Enrolled BWSR easement acres equal 0.78% of total state cultivated cropland and 0.35% of total state land area.



RIM/WRP: Minnesota's Reinvest in Minnesota (RIM) Reserve Program combined with federal Wetland Reserve Program (WRP).
 PWP: Rim Reserve Permanent Wetland Preserves (PWP) for existing wetlands at high risk of being drained or filled.
 CREP: Conservation Reserve Enhancement Program (CREP), combines RIM Reserve with the federal Conservation Reserve Program (CRP). Easements must be in the Minnesota River basin.
 RIM Reserve: Minnesota's set-aside program removes lands from agricultural production to benefit water quality and fish and wildlife habitat.

