

Itasca CSAH 7 Proposed Reconstruction Project Maps

Parcel Sketch

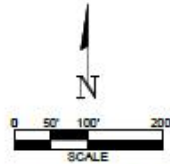
- EXHIBIT E - - EASEMENT DETAIL - CSAH 7, ITASCA COUNTY, MINNESOTA



REPRESENTS PERMANENT EASEMENT



REPRESENTS TEMPORARY CONSTRUCTION EASEMENT



● SURVEY MONUMENT
75 ± 04 ALIGNMENT D007-030 STATION (1+00 = 100')

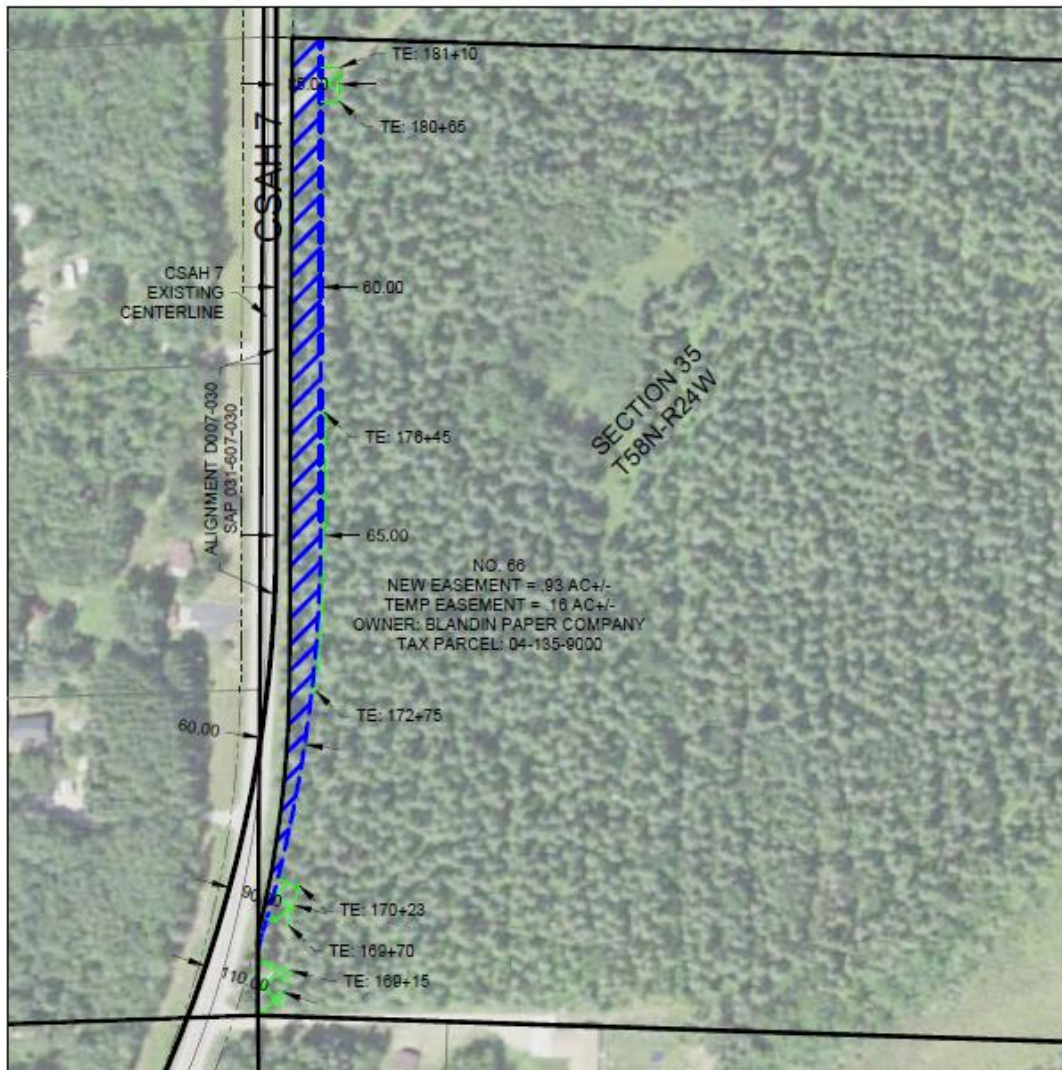
NOTES:
ALL COORDINATES ARE BASED ON THE MINNESOTA COUNTY COORDINATE SYSTEM - ITASCA COUNTY SOUTH ZONE.

ALL DIMENSIONS ON THIS SHEET REFERENCE ALIGNMENT D007-030.

ALIGNMENT D007-030 LINES ARE TANGENT TO ITS ADJOINING CURVES.

MONUMENT POSITIONS PROVIDED BY ITASCA COUNTY SURVEYING DEPARTMENT.

ALL UN-DIMENSIONED SECTION SUBDIVISION LINES AND PARCEL LINES WERE COPIED FROM THE ITASCA COUNTY GIS-PBM2 ON 2022-08-24. ITASCA COUNTY GIS INFORMATION IS A COMPILATION OF DATA FROM DIFFERENT SOURCES WITH VARYING DEGREES OF ACCURACY AND REQUIRES A QUALIFIED FIELD SURVEY TO VERIFY.



Parcel Sketch

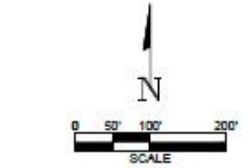
**- EXHIBIT E -
- EASEMENT DETAIL -
CSAH 7, ITASCA COUNTY, MINNESOTA**



REPRESENTS PERMANENT EASEMENT



REPRESENTS TEMPORARY CONSTRUCTION EASEMENT



● SURVEY MONUMENT
75 ⊕ 04 ALIGNMENT D007-030 STATION (1+00 = 100')

NOTES:
ALL COORDINATES ARE BASED ON THE MINNESOTA COUNTY COORDINATE SYSTEM - ITASCA COUNTY SOUTH ZONE.

ALL DIMENSIONS ON THIS SHEET REFERENCE ALIGNMENT D007-030.

ALIGNMENT D007-030 LINES ARE TANGENT TO ITS ADJOINING CURVES.

MONUMENT POSITIONS PROVIDED BY ITASCA COUNTY SURVEYING DEPARTMENT.

ALL UN-DIMENSIONED SECTION SUBDIVISION LINES AND PARCEL LINES WERE COPIED FROM THE ITASCA COUNTY GIS-PBM2 ON 2022-08-24. ITASCA COUNTY GIS INFORMATION IS A COMPILATION OF DATA FROM DIFFERENT SOURCES WITH VARYING DEGREES OF ACCURACY AND REQUIRES A QUALIFIED FIELD SURVEY TO VERIFY.



FILE: P51R (R:\0222\031-607\SURVEY\DRAWING)

Parcel Sketch

**- EXHIBIT E -
- EASEMENT DETAIL -
CSAH 7, ITASCA COUNTY, MINNESOTA**

NOTES:
ALL COORDINATES ARE BASED ON THE MINNESOTA COUNTY COORDINATE SYSTEM - ITASCA COUNTY SOUTH ZONE.

ALL DIMENSIONS ON THIS SHEET REFERENCE ALIGNMENT D007-030.

ALIGNMENT D007-030 LINES ARE TANGENT TO ITS ADJOINING CURVES.

MONUMENT POSITIONS PROVIDED BY ITASCA COUNTY SURVEYING DEPARTMENT.

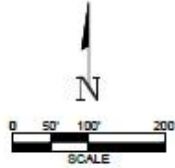
ALL UN-DIMENSIONED SECTION SUBDIVISION LINES AND PARCEL LINES WERE COPIED FROM THE ITASCA COUNTY GIS-PBM2 ON 2022-08-24. ITASCA COUNTY GIS INFORMATION IS A COMPILATION OF DATA FROM DIFFERENT SOURCES WITH VARYING DEGREES OF ACCURACY AND REQUIRES A QUALIFIED FIELD SURVEY TO VERIFY.



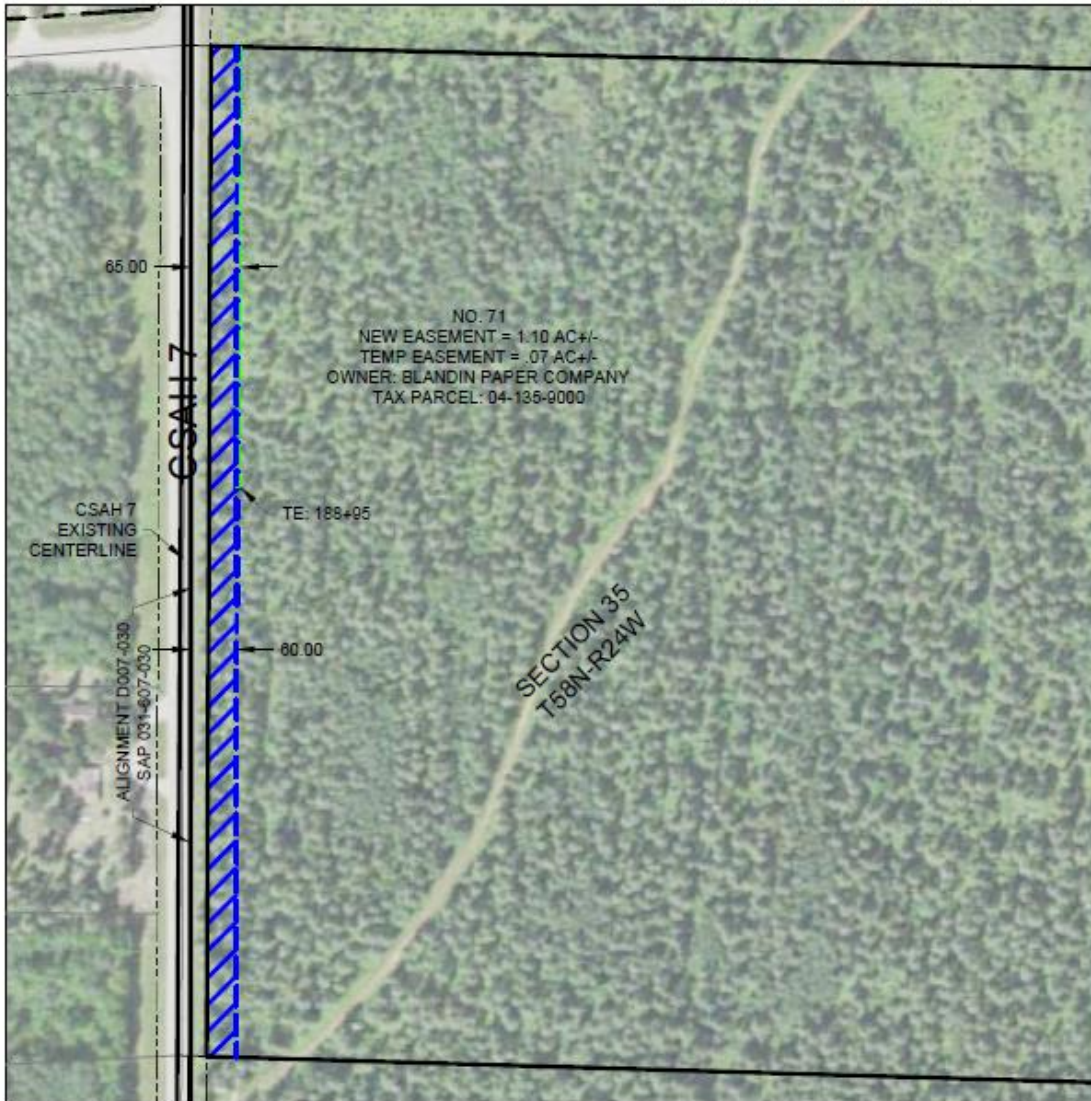
REPRESENTS PERMANENT EASEMENT



REPRESENTS TEMPORARY CONSTRUCTION EASEMENT



● SURVEY MONUMENT
75 ± 04 ALIGNMENT D007-030 STATION (1+00 = 100')



FILE PATH: R:\022721\000\SURVNET\09241010

Parcel Sketch

**- EXHIBIT E -
- EASEMENT DETAIL -
CSAH 7, ITASCA COUNTY, MINNESOTA**

NOTES:
ALL COORDINATES ARE BASED ON THE MINNESOTA COUNTY
COORDINATE SYSTEM - ITASCA COUNTY SOUTH ZONE.

ALL DIMENSIONS ON THIS SHEET REFERENCE ALIGNMENT
D007-030.

ALIGNMENT D007-030 LINES ARE TANGENT TO ITS ADJOINING
CURVES.

MONUMENT POSITIONS PROVIDED BY ITASCA COUNTY
SURVEYING DEPARTMENT.

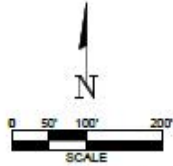
ALL UN-DIMENSIONED SECTION SUBDIVISION LINES AND
PARCEL LINES WERE COPIED FROM THE ITASCA COUNTY
GIS-PBM2 ON 2022-08-24. ITASCA COUNTY GIS INFORMATION
IS A COMPILATION OF DATA FROM DIFFERENT SOURCES WITH
VARYING DEGREES OF ACCURACY AND REQUIRES A
QUALIFIED FIELD SURVEY TO VERIFY.



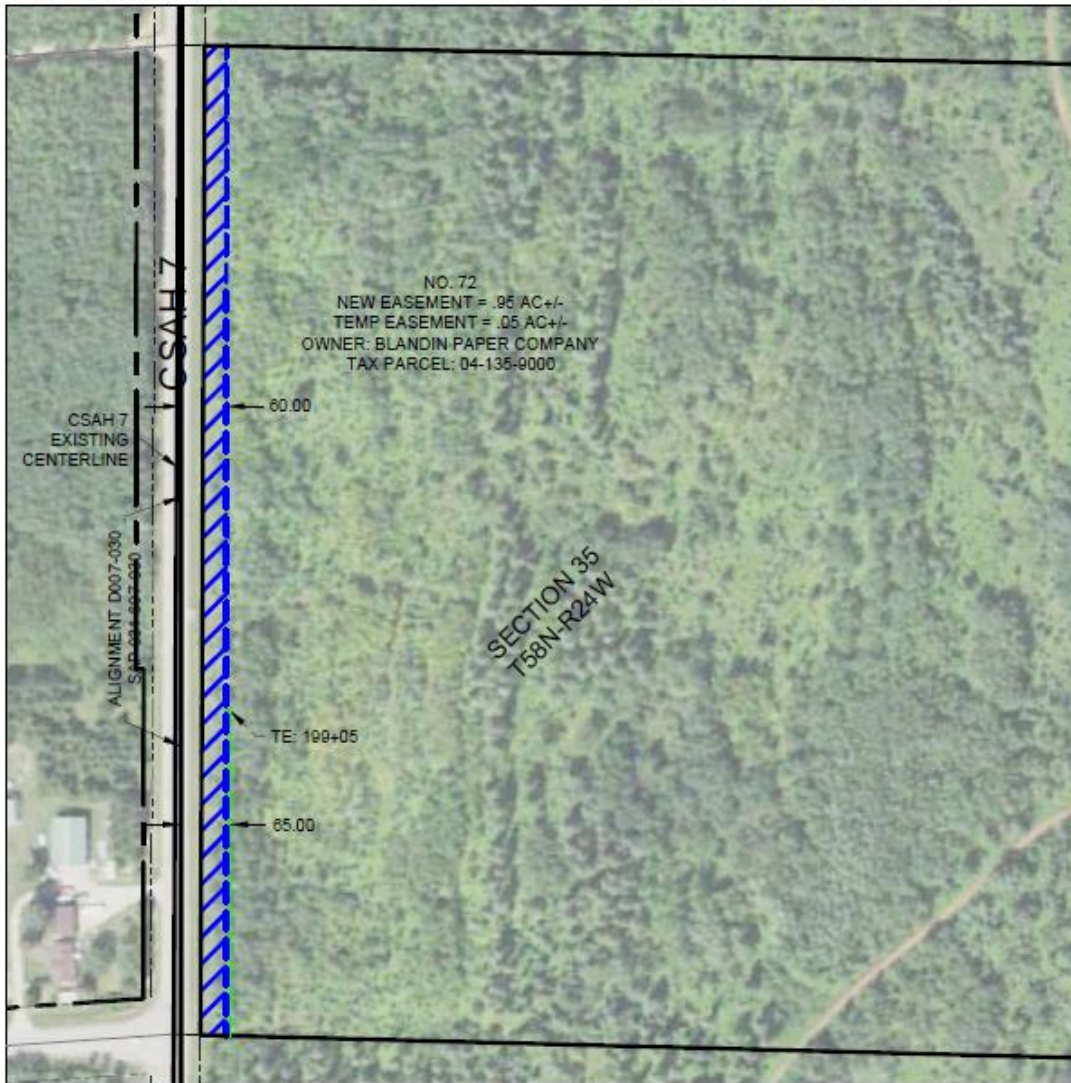
REPRESENTS PERMANENT
EASEMENT



REPRESENTS TEMPORARY
CONSTRUCTION EASEMENT



● SURVEY MONUMENT
75 @ 04 ALIGNMENT D007-030
STATION (1+00 = 100')



FILE PATH (N:\CSAH 7\031-607-030\DOCUMENTS\EASEMENTS\CONSULTANT\CORRESPONDENCE\SHAREL\FROM_WSS\RECEIVED_2023-12-05_WSL_PARCEL_DRAWINGS\ONEDRIVE_2023-12-07\JC-REVISIONS)

Parcel Sketch

**- EXHIBIT E -
- EASEMENT DETAIL -
CSAH 7, ITASCA COUNTY, MINNESOTA**

NOTES:
ALL COORDINATES ARE BASED ON THE MINNESOTA COUNTY COORDINATE SYSTEM - ITASCA COUNTY SOUTH ZONE.

ALL DIMENSIONS ON THIS SHEET REFERENCE ALIGNMENT D007-030.

ALIGNMENT D007-030 LINES ARE TANGENT TO ITS ADJOINING CURVES.

MONUMENT POSITIONS PROVIDED BY ITASCA COUNTY SURVEYING DEPARTMENT.

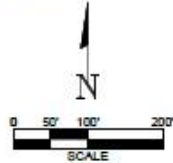
ALL UN-DIMENSIONED SECTION SUBDIVISION LINES AND PARCEL LINES WERE COPIED FROM THE ITASCA COUNTY GIS-P8M2 ON 2022-08-24. ITASCA COUNTY GIS INFORMATION IS A COMPILATION OF DATA FROM DIFFERENT SOURCES WITH VARYING DEGREES OF ACCURACY AND REQUIRES A QUALIFIED FIELD SURVEY TO VERIFY.



REPRESENTS PERMANENT EASEMENT



REPRESENTS TEMPORARY CONSTRUCTION EASEMENT



● SURVEY MONUMENT
75 ⊕ 04 ALIGNMENT D007-030 STATION (1+00 = 100')



FILE PATH (N:\CSAH 7\031-607-030\DOCUMENTS\EASEMENTS\CONSULTANT\CORRESPONDENCE\SHARED_FROM_WSB\DRAWINGS\ONEDRIVE_2023-12-07\IC-REVISIONS)