

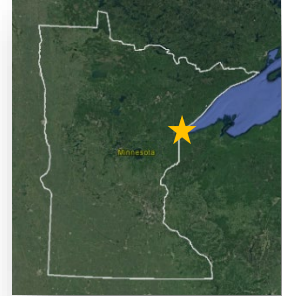
ST. LOUIS RIVER RESTORATION INITIATIVE

PHASE 11 PROPOSAL (HRE05)



The St. Louis River Estuary: a unique & valuable state resource

- 11,000-acre coastal marsh (Ranked S1, critically imperiled native plant community)
- Nursery for Lake Superior fish populations
- Diverse native plants and wildlife
- Important migratory waterfowl flyway
- Site of historical, cultural, and community significance
- “Area of Concern” delisting is on the horizon due in part to significant OHF investments.



Stabilizing and restoring Brook Trout habitat in **Kingsbury Creek**

Creating a hemi-marsh complex at **Grassy Point** to attract *secretive* marsh birds



Restoring habitat for fish and marsh birds, and improving hydrology at **Perch Lake**

Enhancing **coastal forest habitat** for migratory birds and to improve resiliency against emerald ash borer



Each **\$1,000** awarded by OHF leveraged **\$870** in Federal/other support for all SLRRI projects to date



The community is rediscovering the St. Louis River!



50 Acres Avian Forest Enhancement Multiple Locations



We will continue to enhance coastal forests that are protected under the City of Duluth's Natural Areas Program. Proposed enhancements such as underplanting and invasives control will improve habit conditions for migrating and breeding birds and other native wildlife communities.

We will restore degraded segments within the upper tributaries of this cold-water stream. Restoration outcomes will improve trout habitat, reduce sediment delivery, and protect downstream restoration work completed in 2017.

1,500 ft Stream Restoration Knowlton Creek Tributaries

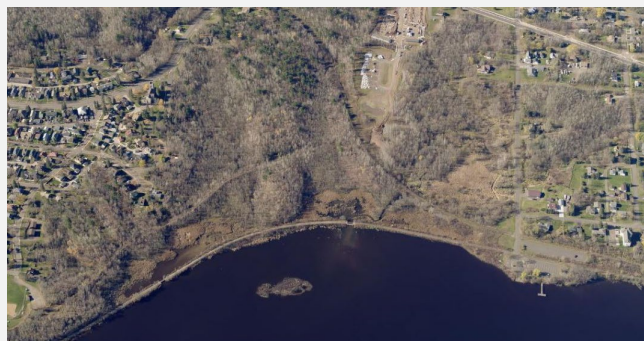


10 Acres Habitat Restoration Radio Tower Bay



A 2015 project successfully restored fish habitat at this historic sawmill location. We will expand the aquatic and terrestrial restoration footprints, with a focus on improving habitat for avian species.

30 Acres/1,500 ft Habitat Restoration & Enhancements Munger Landing and Stewart Creek



Working in both aquatic and upland habitats protected under the City of Duluth's Natural Areas Program, we will restore degraded coastal wetlands and impaired reaches of Stewart Creek. Coastal forest habitat will be enhanced to benefit birds and native wildlife.

Let's maintain this momentum!



The St. Louis River Restoration Initiative has:

- Strong partnerships
- Demonstrated success
- An engaged community
- A clear vision for **restoration, enhancement, and protection**