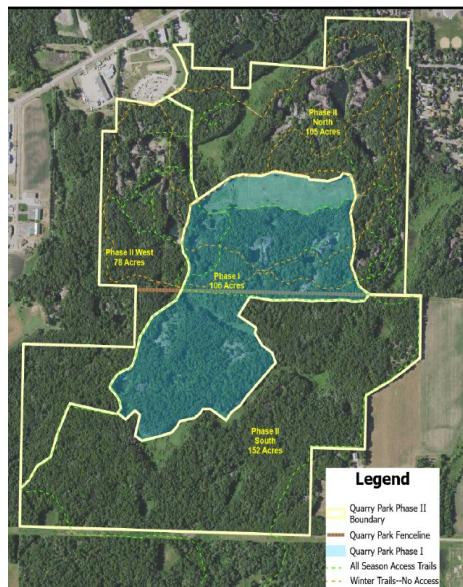


Quarry Park & Reserve (SNA) Enhance Ph2



Highlights

- ♦ 335 acres at <5.5K./ac. Capture scale efficiencies with 93ac Ph1 which is underway with ASP6-7
- ♦ Rare species: Tubercled rein-orchid, northern long-eared bat, red shouldered hawk, Acadian flycatcher, brittle prickly pear cactus
- ♦ Crystalline Bedrock Outcrop: imperiled plant community
- ♦ Large habitat core >650 acres
- ♦ Protect Ph1 by reducing buckthorn seed rain along perimeter

Quarry Park Phase 2 Units

Mobile Biochar Capital Equipment

- ♦ Sized for use with skid-steer loads
- ♦ Eliminates burn scars, which are invasive hot spots
- ♦ Less particulate than pile burns
- ♦ Can burn greener wood

Biochar product

- ♦ Soil amendment to re-balance nitrogen after buckthorn removal
- ♦ Apply and monitor native re-vegetation post buckthorn
- ♦ ~1/2 carbon stored for 100s of years



Phase 1 Before



Ph1 After Forestry Mow



No-Spray Aspen Gir-dling



Goats for ReSprouts 10ac



Big Elk Lake Enhance Ph2 & Island View Ph1



Ph1 Prairie Restore—Before



Phase 1 and 2 Oak Savanna

Big Elk Lake

- ♦ Ph1 11ac savanna enhance and 120ac prairie restore underway with ASP8/ML23
- ♦ Capture economy of scale by adding remaining 60ac oak savanna, dry oak forest, prairie, and shoreline habitat enhancement
- ♦ Cultural landscape with Native American burial sites
- ♦ Incorporate traditional methods through Tribal consultation
- ♦ Employ cultural protocol in management activities



Island View Ph1 overview



Phase 1 —Before

Island View

- Mississippi River corridor
- Increase forest biodiversity
- ♦ Increase natural regeneration of desirable canopy trees

