

HAO2 Pine and Leech Watershed Phase III Targeted RIM Easement Permeant Land Protection

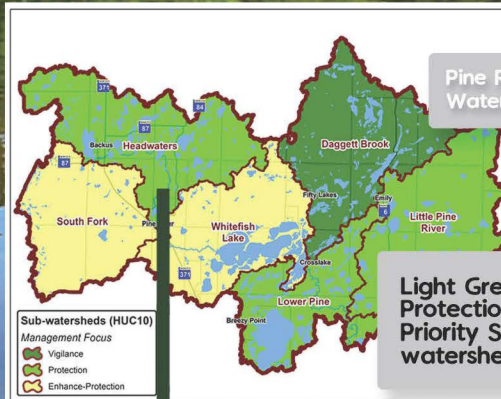
Prioritization by Watershed:

- Cisco Lakes, Wild Rice Lakes, Lakes of High/Outstanding Biodiversity
- "Protection" Watersheds (< 75% Protected: source One Watershed One Plan, DNR Landscape Stewardship Plan)

Leech Lake Watershed

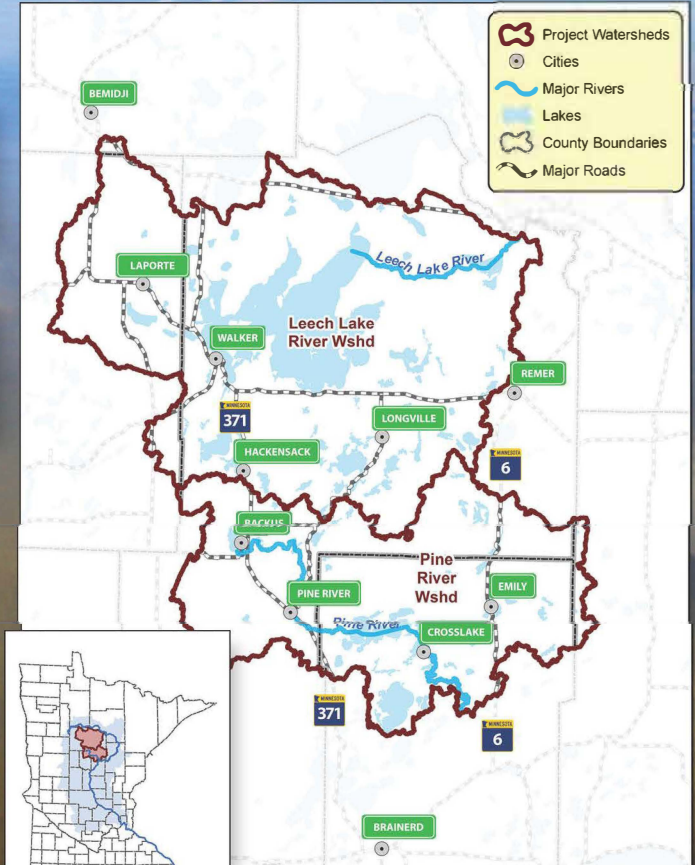
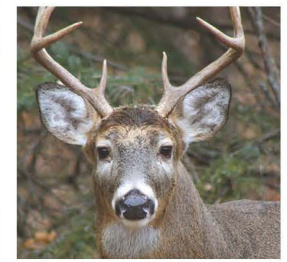
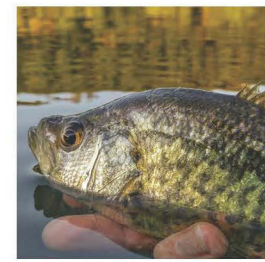
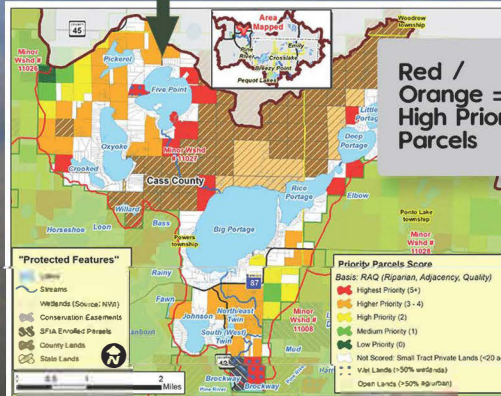
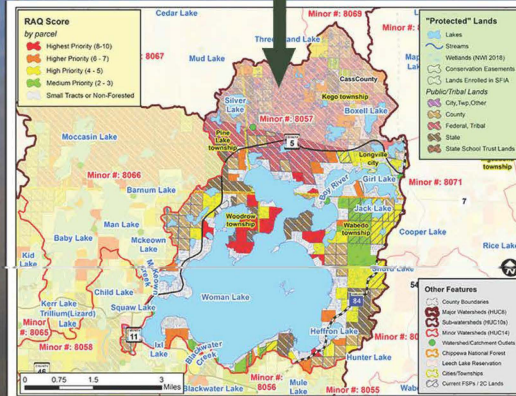


Pine River Watershed



Light Green = Protection Priority Sub-watershed

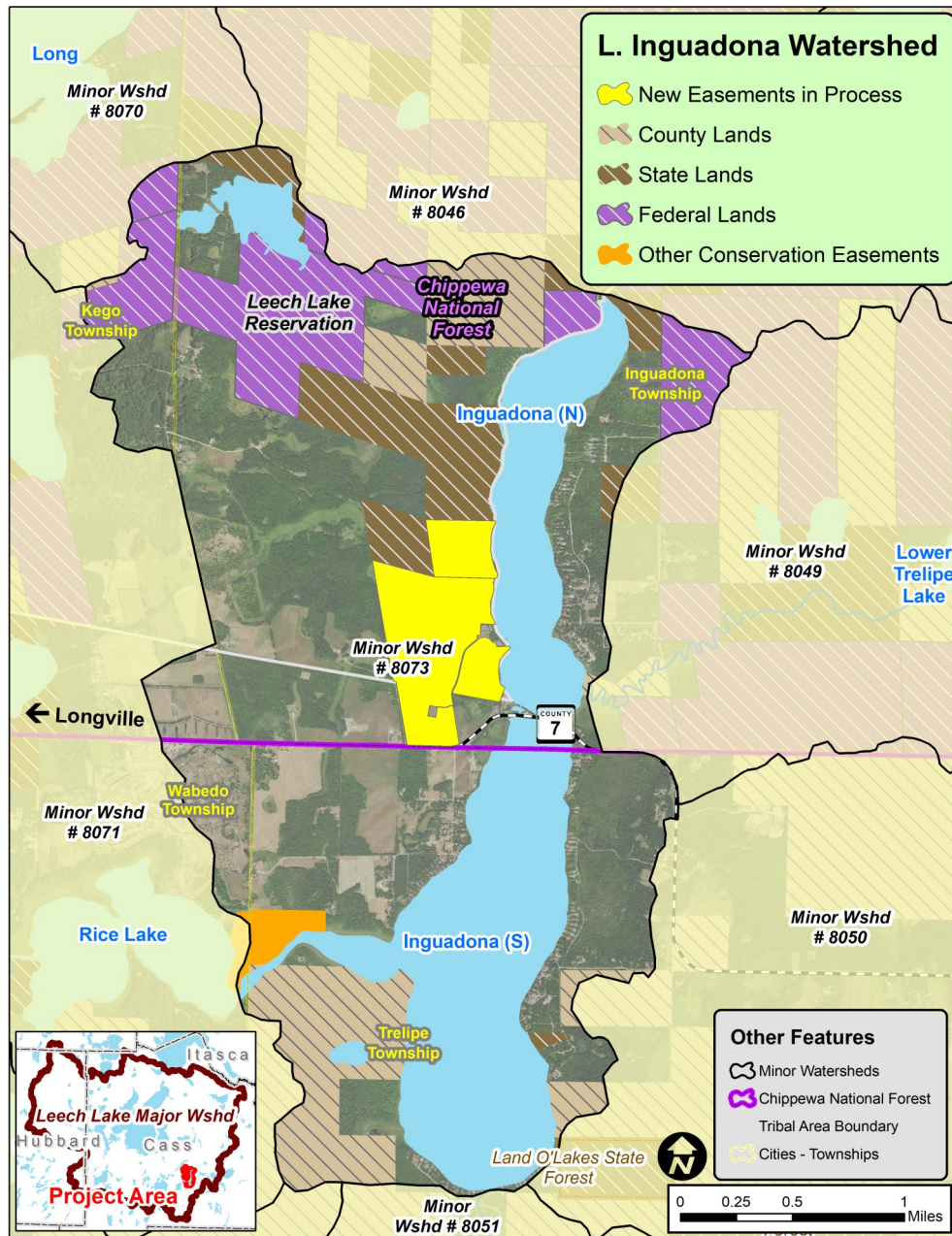
Red / Orange = High Priority Parcels



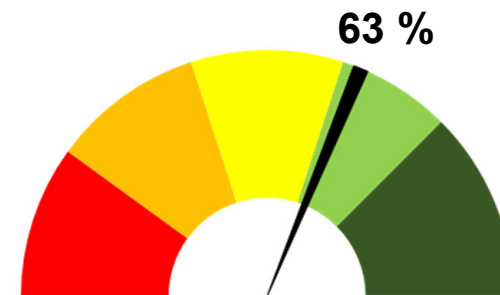
RAQ Scoring Method Targets to the Private Parcel:

- R = Riparian to Lake or Stream
- A = Adjacent to Public Lands (for larger habitat blocks)
- Q = Quality (High or Outstanding Terrestrial Biodiversity/DNR Wildlife Action Plan, Trout, Native, Muskies, Wild Rice, Old Growth Forests, + other locally important features)

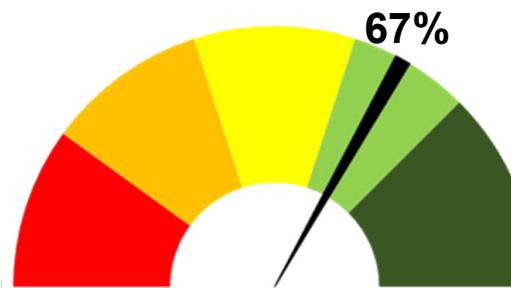
Easement Success Story



Pine and Leech Phase III Goal: Complete 15 BWSR RIM Easements on private lands to protect 750 acres.



Protection Level before the new easement.



Protection Level with the new easement added.

