

# LSOHC Protection Summary - Camp Ripley Sentinel Landscape ACUB Protection Program - Phase 12 Public Lands Protection (Creating and Enhancing Habitat Corridors) ML 2024

**Pre-ACUB: 33.8%**

Total Protected (5-mile):  
**85,382 acres**



**End-State Protection Goal (5-mile):**

65% or 164,215 acres protected via easements (Federal & LSOHC), fee title (partner's work), and SFIA within the 5-mile Work Area or 252,637 acres.

**Current: 59.4%**

Total Protected (5-mile):  
**150,046 acres**



**FACT:** Forestland makes up 35.5% of the larger CRSL with only 0.5% of those forests being located on public lands. Easements and private land restorations are critical in protecting the larger percentage of the landscapes forested habitat.



**Protected Lands = Public/NGO, SFIA, Easements, Wetlands, and Lakes/Rivers**

Working with willing landowners this partnership will utilize permanent conservation easements (BWSR RIM) to acquire 1,700 acres of high-quality habitat in order to accomplish:

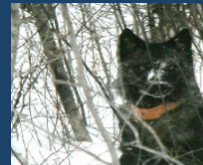
**PERMANENT PROTECTION** of habitat corridors and buffers around public lands

**PRESERVE** open space within the CRSL

**PRACTICES** that protect soil & water quality and habitat corridor connectivity via conservation enhancement and restoration efforts



Northern long-eared bat



Gray wolf

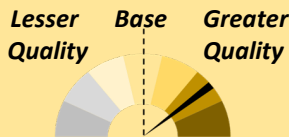


Golden eagle



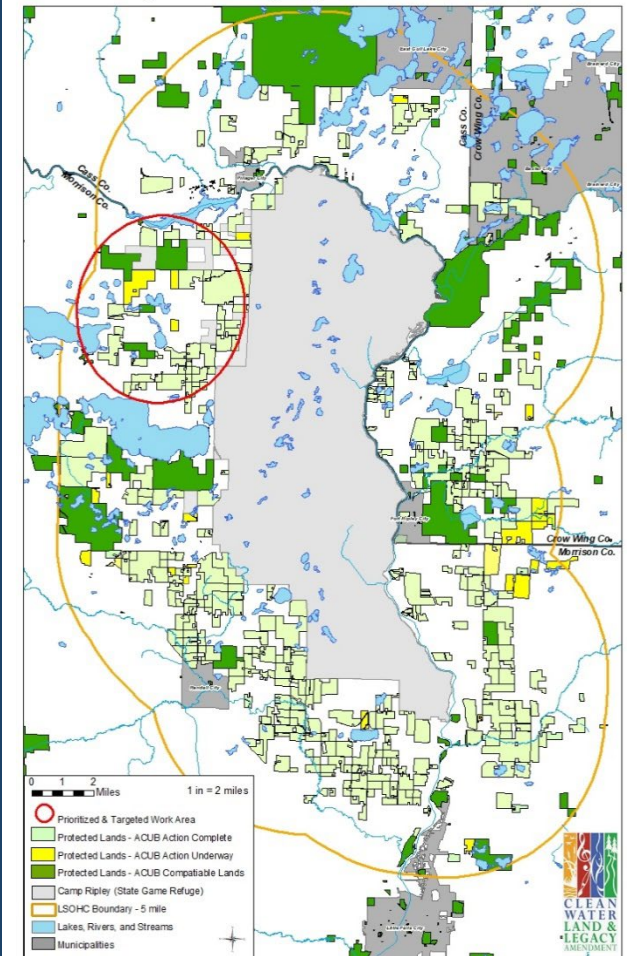
Blanding's turtle

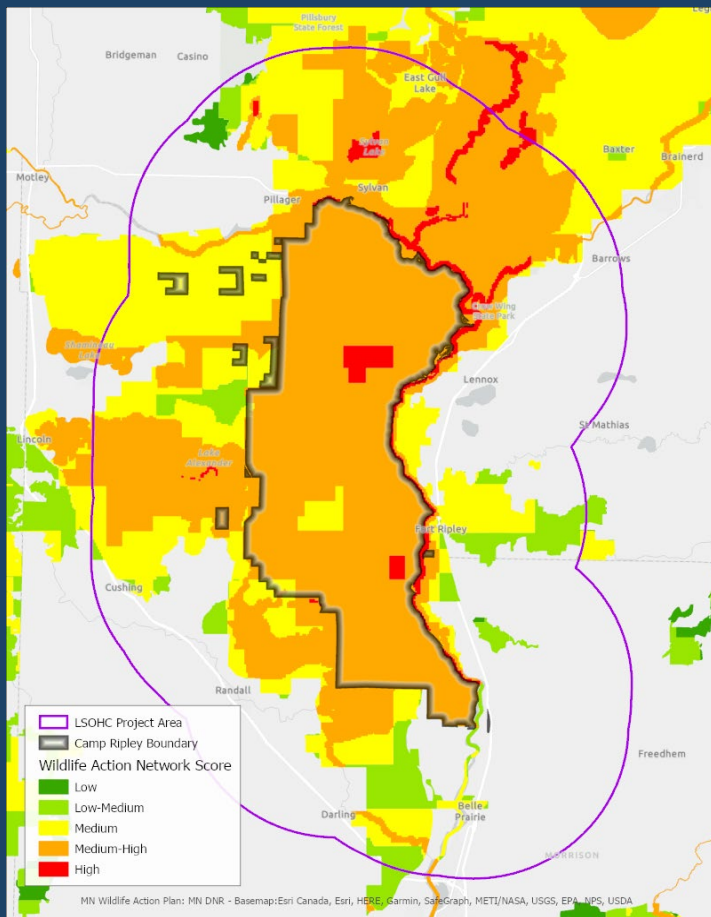
### Habitat Quality Meter



- High terrestrial biodiversity
- High Wildlife Action Network score
- Wild rice lakes
- Trout streams
- Stream confluences
- Lakes of high/outstanding biodiversity
- High fisheries habitat

Camp Ripley Sentinel Landscape ACUB Protection Program - Phase 12  
Creating and Enhancing Targeted Habitat Corridors ML 2024

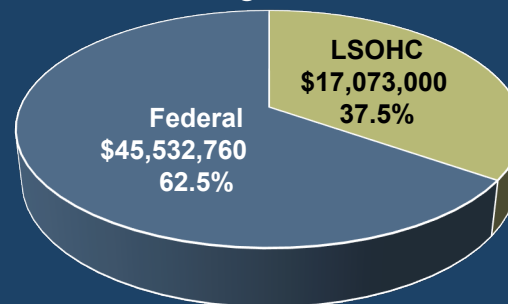




Pictured above is the DNR Wildlife Action Network score for this project boundary. Within these targeted high-priority lands, this project will:

- Secure approximately 23 RIM easements
- Protect 1,700 acres of high-quality habitat
- Buffer rivers, lakes, and public lands
- Prevent habitat fragmentation
- Provide a large network of habitat continuity that benefit species requiring large un-fragmented landscapes

## ACUB Protection Funding to Date:



- The Minnesota National Guard competes for Federal funding to acquire RIM conservation easements that prevent incompatible development
- Federal dollars infused into the local economy
- Funding from LSOHC is critical in leveraging access to these competitive Federal funds
- Many State agencies train at Camp Ripley
- Camp Ripley is the largest employer in Morrison County

*Keeping forests, forests and farms, farms through the Army's triple bottom line*

## Mission



Community

Environment