



Minnesota Board of Water and Soil Resources (BWSR) conversation with the Lessard-Sams Outdoor Heritage Council (LSOHC) June 21, 2023

John Jaschke
Executive Director



bwsr.state.mn.us



Minnesota Conservation Reserve Enhancement Program (MN CREP)



- Voluntary and locally driven
- State-held easements
- Targeted to environmentally sensitive areas
- Permanent Protection, local ownership
- Federal leverage up to \$350 million (with state match)

CREP: What landowners say



“
It's a good opportunity to get a fair payment on ground that would be idle and to do your part for resource conservation.

— Leroy VanWhye, Rock County landowner



“
It's the best use for the land, in the sense that you're taking a piece of ground that may be marginal and utilizing its full potential by restoring it.

— Steven Ge
Redwood County landowner

Success Story: Expanding MN CREP in Meeker County



1,100+ acres enrolled in
MN CREP since 2017 in
Meeker County

30+ participating
landowners

CREP Status



46,639 acres
signed up via
SWCDs.

35,770 acres
enrolled to date.

600+ landowners

Walk-in access program



The USDA has provided funding for the Walk-in Access funding through September 2023. Other funding comes from a surcharge on all nonresident hunting licenses and donations from hunters.

Landowners can sign up for the program at their local soil and water conservation district office or by contacting Troy Dale, program coordinator, at 507-537-6616 at. *Rice SWCD example*

Mower SWCD seeks more walk-in access for hunting
Applications due by April 27 for state DNR program

		IRA funding in millions				
	FY22 Farm Bill	2023	2024	2025	2026	IRA total
EQIP	\$ 1,800	\$ 250	\$ 1,750	\$ 3,000	\$ 3,450	\$ 8,450
CSP	\$ 800	\$ 250	\$ 500	\$ 1,000	\$ 1,500	\$ 3,250
RCPP	\$ 300	\$ 250	\$ 800	\$ 1,500	\$ 2,400	\$ 4,950
ACEP	\$ 450	\$ 100	\$ 200	\$ 500	\$ 600	\$ 1,400
CTA						\$ 1,000
Carbon Program						\$ 300
Admin						\$ 100

Success Story: Patterson Lake (6-20-23 site visit) habitat restoration



Wetland + lakebed restoration on 2 MN CREP easements near Waconia

152 acres permanently protected; 56.5 acres of restored wetlands, 95.5 acres of upland habitat

Success story: RIM Grasslands easements



\$2.3 million from Outdoor Heritage Fund in 2019 expanded RIM to grasslands with no cropping history

1,500+ acres enrolled to date in Cottonwood, Rock, Redwood, Murray, Mahanomen counties

Success story: Shingle Creek restorations augment habitat

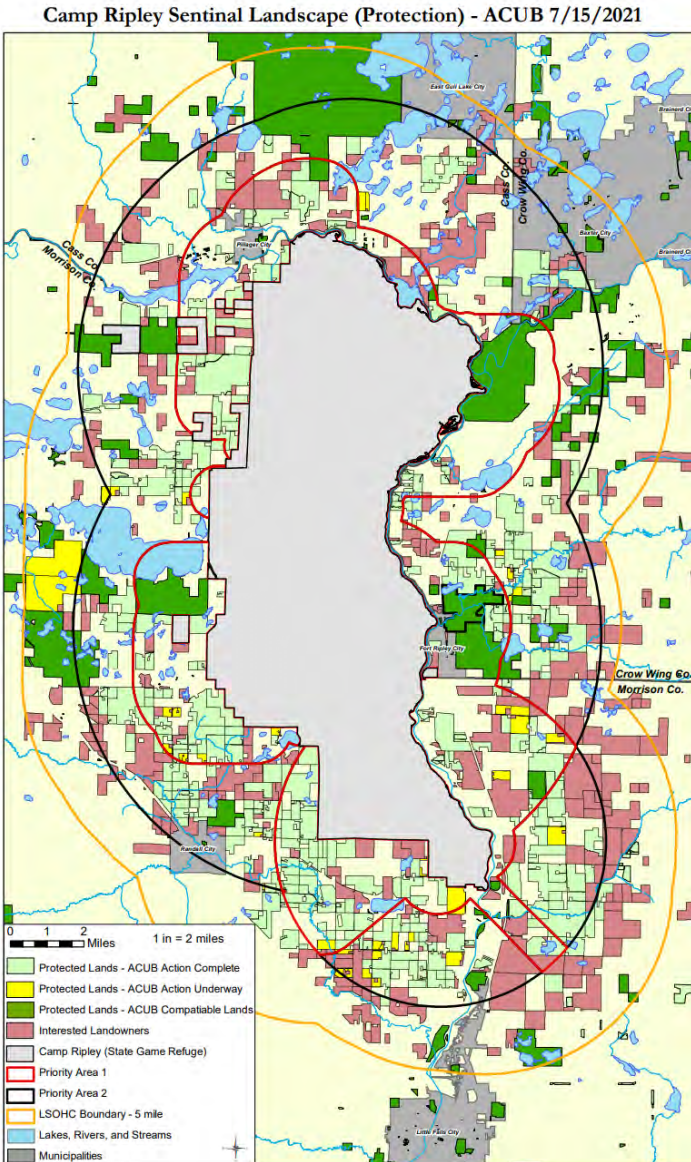


Nearly 1 mile of stream restoration in 11-mile Shingle Creek

Aquatic habitat benefits

Success story: Forestry partnerships/Dept of Defense

Camp Ripley Sentinal Landscape (Protection) - ACUB 7/15/2021



Protection easements with forest management improves habitat + resiliency

Success Story: Whiskey Creek restoration benefits wildlife habitat



Supported by \$2 million from Outdoor Heritage Fund via DNR Stream Habitat Program

Project aims to improve water quality + quantity, enhance habitat

Success Story: Habitat + groundwater protection in Worthington area



56 acres set aside for wildlife habitat

Expands Pheasant Run One, a habitat complex covering over 543 acres

Success Story: Habitat and wetland restoration at Pickerel Lake, Freeborn Co.



245 acres of prairie and
wetland habitat restored

Partners include
Pheasants Forever,
USFWS, Shell Rock River
Watershed District, BWSR

Success Story: Dakota County trout stream restoration



South Creek supports
brown trout and
northern Pike

Lower water
temperature + less
sediment improves
trout habitat

Success Story: Stearns County shoreline erosion control



Native plants added to shoreline boosts habitat, filtration, reduces erosion

Success Story: Freeborn County CREP

Project mitigates potential flood damage, creates new wildlife habitat



Success Story: Andover wetland restoration, Anoka Co.



Local Government Road
Wetland Replacement
Program wetland
restoration

Created bird and pollinator
habitat, city park trail

☆ Success Story: Grand Marais Outlet Project and Cut Channel Stabilization



“The amendment was the catalyst we needed to move forward. This is our legacy.”



637 tons of sediment annually kept from entering the Red River.

100%
80%
60%
40%
20%
10%
0%



Progress
towards goal

Success Story: Safeguarding St. James' drinking water, Watonwan Co.



“

I just thought it was the right thing to do for the land, being it was marginal land, to put it in a program like this so it helps protect our water.

”

“

It's in the prairie grass. You don't have to spray. No fertilizer. No nitrates in the water will seep through. The land is just back to nature.

”

— Rich Enger, Watonwan SWCD Board chairman



Minnesota's Watershed-Based Approach



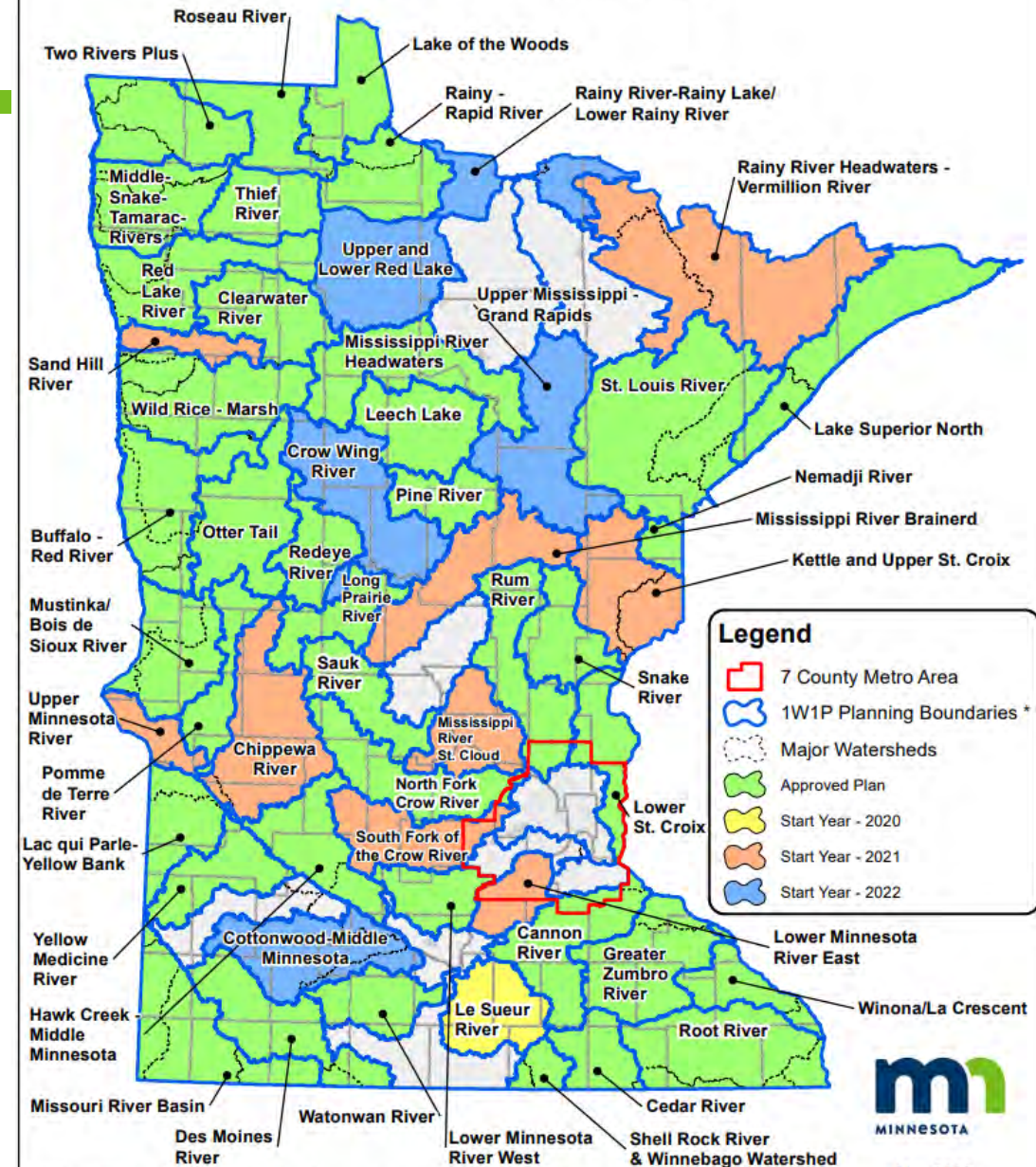
1W1P participating watersheds



LEECH LAKE RIVER WATERSHED COMPREHENSIVE WATERSHED MANAGEMENT PLAN

Woods, water, wildlife, and people:
A healthy watershed and a vibrant economy

One Watershed, One Plan Participating Watersheds



*Not legal boundaries; intended for planning purposes through One Watershed, One Plan only.

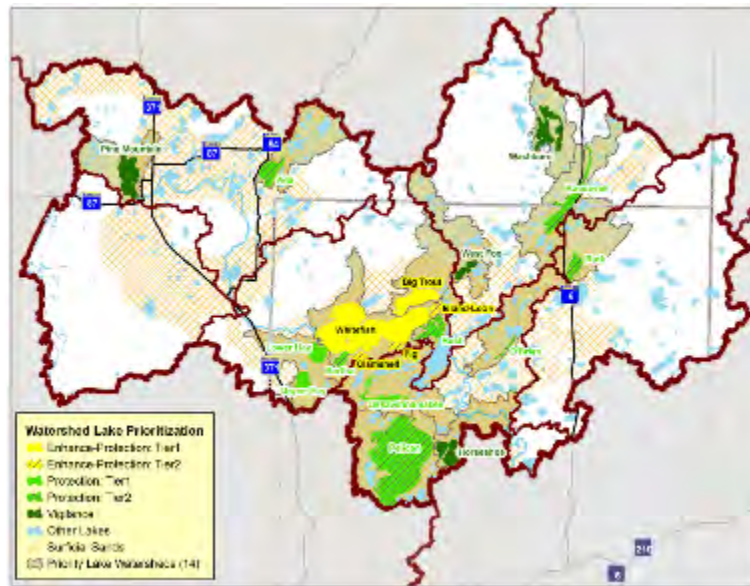
May 2023

Efficient and effective use of resources

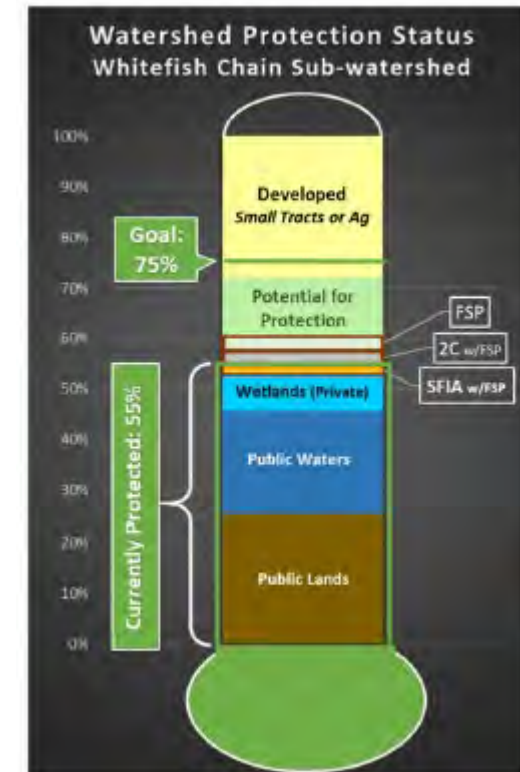
Prioritize



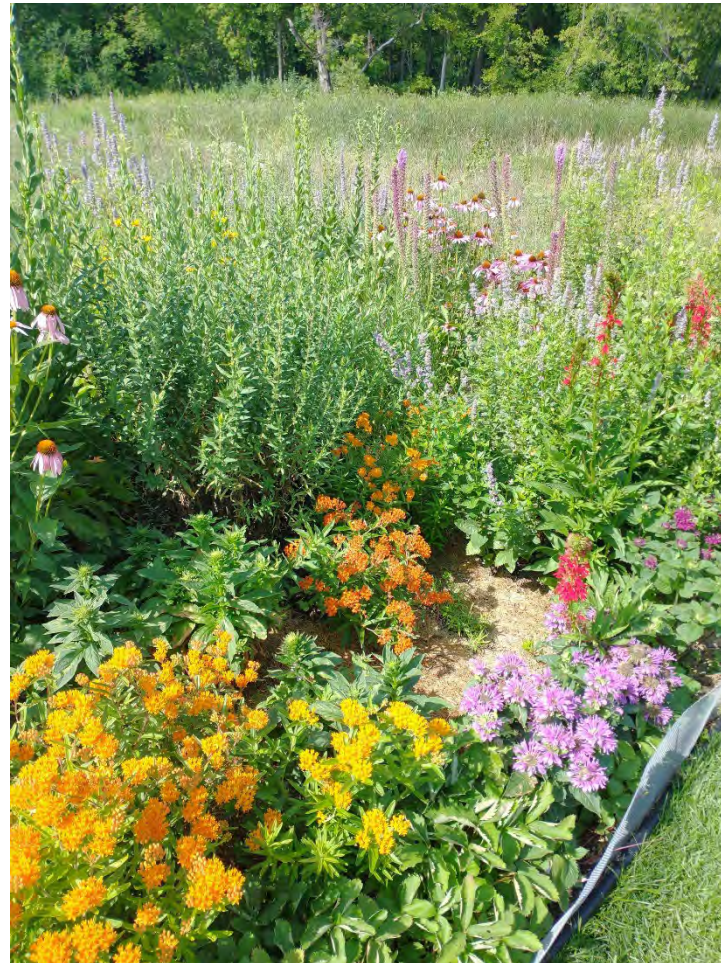
Target



Measure



Lawns to Legumes: Creating habitat one yard at a time



m
BWSR

**ENVIRONMENT
AND NATURAL RESOURCES
TRUST FUND**

**Blue
Thumb**
PLANTING FOR CLEAN WATER

your yard
CAN BEE
the **CHANGE**

#Lawns2Legumes

CREP program helping restore local wetlands.

Waterfowl take flight from a recently restored wetland area near St. Peter. Landowner Richard Gustafson enrolled the land in the CREP program partly so it could become a habitat for birds again. April 10, 2021



Ideas, Problems, Opportunities, Efficiencies, Questions...

Thank You LSOHC

John Jaschke | Executive Director
612-202-3815 mobile, john.Jaschke@state.mn.us