



Lessard-Sams Outdoor Heritage Council

Metro Big Rivers Phase 10

Laws of Minnesota 2020 Accomplishment Plan

General Information

Date: 05/23/2023

Project Title: Metro Big Rivers Phase 10

Funds Recommended: \$6,473,000

Legislative Citation: ML 2020, Ch. 104, Art. 1, Sec. 2, subd 5(b)

Appropriation Language: \$6,473,000 the second year is to the commissioner of natural resources for agreements to acquire lands in fee and permanent conservation easements and to restore and enhance natural habitat systems associated with the Mississippi, Minnesota, and St. Croix Rivers and their tributaries in the metropolitan area. Of this amount, \$801,000 is to Minnesota Valley National Wildlife Refuge Trust Inc., \$300,000 is to Friends of the Mississippi River, \$366,000 is to Great River Greening, \$3,406,000 is to The Trust for Public Land, and \$1,600,000 is to Minnesota Land Trust. Up to \$144,000 to Minnesota Land Trust is to establish a monitoring and enforcement fund as approved in the accomplishment plan and subject to subdivision 17. A list of proposed land acquisitions and permanent conservation easements must be provided as part of the required accomplishment plan.

Amendment Description: The Minnesota Valley Trust (MVT) requests an amendment to convert its grant funds in this phase from Fee Acquisition w/o PILT to R/E activities.

With this amendment, MVT anticipates completing restoration and enhancement work on at least 300 acres. All work will be completed on the Minnesota Valley National Wildlife Refuge (Refuge) and Wetland Management District within the LSOHC's Metro Urbanizing Area.

One significant project will be habitat restoration activities along Ike's Creek, the only known trout stream in Hennepin County and one of very few in the metro area. Since 2006, Ike's Creek has been studied by the MN Department of Natural Resources, MN Valley National Wildlife Refuge, Lower Minnesota River Watershed District, Minnesota Trout Unlimited and numerous other partners. It was stocked in 2007 with Minnesota Wild brook trout and has continued supporting the fish since then.

The grant will fund the creek restoration design and the actual restoration activities. Anticipated restoration work will solve known challenges facing the creek, including erosion in the upper section and constriction points in the lower section, thereby improving habitat throughout the stream and ensuring it can continue supporting brook trout.

Other prospective projects are being identified by MVT and USFWS, at which point we will submit a subsequent amendment request to add projects to the parcel list and, if needed, refine the budget and outputs.

The amendment request:

- Reduces the Fee Title Acquisition without PILT by 300 acres from 337 to 37 acres (Fee Acquisition with PILT remains at 198 acres).
- Increases Restoration acres by 3 to 26 acres and Enhancement by 297 acres from 395 to 692 acres.

CF / MN Heritage Forest parcel addition: N/A (Not Adding Parcels)

Manager Information

Manager's Name: Deborah Loon

Title:

Organization: MN Valley Trust (Metro Big Rivers)

Address: 3815 East American Boulevard

City: Bloomington, MN 55425

Email: DLoon@mnvalleytrust.org

Office Number: 612-801-1935

Mobile Number: 612-801-1935

Fax Number:

Website: www.mnvalleytrust.org

Location Information

County Location(s): Anoka, Carver, Chisago, Dakota, Hennepin, Isanti, Ramsey, Scott, Sherburne, Sibley, Washington and Wright.

Eco regions in which work will take place:

- Metro / Urban

Activity types:

- Protect in Easement
- Protect in Fee
- Restore
- Enhance

Priority resources addressed by activity:

- Wetlands
- Prairie
- Forest
- Habitat

Narrative

Abstract

Metro Big Rivers Phase 10 will protect ~~5~~ 235 acres in fee title and 157 acres in permanent conservation easement, restore ~~123 acres and enhance~~ 6 acres and enhance ~~692~~ 95 acres of priority habitat in the big rivers corridors in the Metropolitan Urbanizing Area (MUA). Metro Big Rivers partners will leverage the OHF funds at least 10% with partner funds, private funds, local government contributions, and landowner donations of easement value. In

addition, significant volunteer engagement will be invested in habitat enhancement activities, although not technically counted as leverage.

Design and Scope of Work

Metro Big Rivers Phase 10 will protect, restore and enhance prioritized wildlife habitat in the Metro Urbanizing Area, with an emphasis on the Mississippi, Minnesota and St.Croix Rivers and their tributaries. By expanding, connecting and improving public conservation lands, Metro Big Rivers benefits wildlife and species in greatest need of conservation (SGCN) and provides increased public access for wildlife-based recreation. See brief descriptions below and attachments for detail.

Friends of the Mississippi River (FMR) will enhance 220 acres at three sites on or near the Mississippi River. Projects include removal of invasive woody and herbaceous plants, spot-mowing, spot-spraying, prescribed burns and seeding.

*Cottage Grove Ravine Regional Park, Washington County: Enhance 116 acres of oak forest, 5 acres of native bluff prairie and 1 acre of restored prairie.

*Riverside Park, Washington County: Enhance 13 acres of oak forest and 1 acre of savanna.

*Pine Bend Bluffs Natural Area, Dakota County: Enhance 50 acres of oak forest, 20 acres of restored prairie and 14 acres of native prairie.

Great River Greening (GRG) will restore 23 acres and enhance 75 acres across five sites. Projects will include removal of invasive woody and herbaceous species, mowing and spot spraying, seeding and planting.

*Minnehaha Greenway - Methodist Easement, Hennepin County: Enhance 15 acres of riparian land along Minnehaha Creek, recently re-meandered by the watershed district.

*Mississippi River Bluff Corridor, Hennepin County: Restore 18 acres of old agricultural field to prairie.

*Strootman Park, Anoka County: Enhance 10 acres of woodland.

*Timber River Park, Anoka County: Restore 5 acres of a ballfield to native prairie and woodland habitat. Enhance another 5 acres of woodland and native prairie.

*Vadnais / Sucker Lake, Ramsey County: Enhance 45 acres of wetlands.

Minnesota Land Trust (MLT) will protect through perpetual conservation easement 157 acres of priority wildlife habitat, including riparian lands, forests, wetlands and grasslands. Projects will be selected through a competitive RFP process that ranks proposals based on ecological significance and cost (criteria attached).

MLT also will restore 100 acres on private lands already protected through permanent conservation easement. Prioritized properties will be of high ecological significance, adjacent or close to public conservation investments and owned by landowners committed to conservation.

~~Minnesota Valley Trust (MVT) will protect in fee 300 acres of river frontage habitat on the Minnesota Valley National Wildlife Refuge. Projects will include restoration of Ike's Creek, floodplain forest one of the few trout streams in the metro area with an existing Wild Brook trout population. The restoration will improve hydrology and floodplain connectivity, wetland and upland habitat in the Minnesota River Valley reduce undesirable sediments and restore diverse bed forms and dy to expand the Minnesota Valley National Wildlife Refuge namic equilibrium. Of the total, 60 acres will be acquired with other non-state funds. All prospective lands have been prioritized by the USFWS and will be restored/enhanced, then open to the public for wildlife-based recreation, including hunting and fishing.~~

The Trust for Public Land (TPL) will protect in fee 235 acres of priority wildlife habitat, including riparian, forest, wetland, and grassland habitat. The potential properties have been identified and prioritized in state, regional and local natural resource plans. Lands acquired will be managed by TPL's public partners (MN DNR and local units of government) and will be open to the public for wildlife-based recreation, including hunting and fishing.

How does the plan address habitats that have significant value for wildlife species of greatest conservation need, and/or threatened or endangered species, and list targeted species?

Metro Big Rivers projects protect and improve habitats needed by wildlife species in greatest conservation need (SGCN) and other targeted species, and where they need them. Many of Minnesota's forest and grassland SGCNs are migratory. Improving habitat along the central flyway (the three big rivers) provides great benefits to all wildlife species, especially during critical migration periods.

Friends of the Mississippi River project sites are located on or near the Mississippi River within the Audubon-designated Important Bird Area. This corridor provides critical habitat for neotropical migrant birds and numerous SGCN. FMR has been tracking breeding bird species at these sites and has recorded 10 SGCNs. The sites are also vital for many other species, especially native pollinators, and provide connectivity to other natural areas.

Great River Greening will also conduct significant habitat work on public conservation lands to improve habitat values for wildlife and SGCN, including birds using the Mississippi River migratory corridor and pollinators. Work will restore and enhance riverine, forest, oak savanna, prairie, and wetland habitat at five conservation sites.

Minnesota Land Trust will target its protection and restoration/enhancement action to priority privately owned

lands to permanently protect high-quality upland and shoreland habitats from fragmentation, development, and other impacts that undermine the viability of SGCN and T&E species. Restoration and enhancement of habitat is proposed for lands already protected through easement.

Minnesota Valley Trust will ~~acquire in fee land~~ restore and enhance habitats identified through the USFWS Comprehensive Conservation Plan for the USFWS Inventory and Monitoring Plan and USFWS Habitat Management Plan for the Minnesota Valley National Wildlife Refuge. ~~This plan~~ ese plans prioritizes lands for high biodiversity, connectivity, and ability to preserve habitat for SGCN.

The Trust for Public Land will acquire lands in fee identified and prioritized in state, regional, and local natural resource plans due to their high biodiversity significance, connectivity to existing public lands, and ability to preserve habitat for SGCN. Acquisitions and subsequent habitat work increase breeding and migratory habitat for waterfowl, shorebirds, neo-tropical migrants, and non-migratory resident species, protect the diversity of native ecosystems, and improve connectivity and resilience.

Describe how the plan uses science-based targeting that leverages or expands corridors and complexes, reduces fragmentation or protects areas identified in the MN County Biological Survey:

Protection partners prioritize work through science-based processes led by the public entities that own or will own interest in the properties (e.g., MN DNR, USFWS). Plans followed include MBS, RESA, Metropolitan Conservation Corridors, Minnesota State Wildlife Action Plan, and the Comprehensive Conservation Plan for the Minnesota Valley National Wildlife Refuge. Actions are targeted toward building conservation corridors and priority habitat complexes.

In addition, the easement partner's competitive RFP process includes a second analysis of all proposed projects submitted by landowners for protection. This assessment evaluates the ecological significance of the proposed parcel, which includes the following three factors:

- Quantity – the size of habitat and/or length of shoreline associated with a parcel, and abundance of Species in Greatest Conservation Need (SGCN) and Threatened & Endangered (T&E) species
- Quality – the condition of the associated habitat and populations of SGCN and T&E species
- Landscape Context – the extent and condition of natural habitat surrounding the parcel, and the degree to which adjacent property has been protected.

Restoration and enhancement partners use science-based criteria to prioritize activities. This includes consideration of the highest quality natural areas (as determined by MBS), as well as prioritization of work within important ecological corridors identified by a coalition of conservation partners and based on rare species and sensitive landscape features. This prioritization ensures that projects reduce fragmentation and link natural areas

within already-established corridors. All of the restoration and enhancement sites are located along or near the three big rivers and important tributaries - some of the most important ecological corridors for migrating and sedentary plant and animal life.

Which two sections of the Minnesota Statewide Conservation and Preservation Plan are most applicable to this project?

- H1 Protect priority land habitats
- H5 Restore land, wetlands and wetland-associated watersheds

Which two other plans are addressed in this program?

- Minnesota's Wildlife Action Plan 2015-2025
- Outdoor Heritage Fund: A 25 Year Framework

Which LSOHC section priorities are addressed in this program?

Metro / Urban

- Protect habitat corridors, with emphasis on the Minnesota, Mississippi, and St. Croix rivers (bluff to floodplain)

Outcomes

Programs in metropolitan urbanizing region:

- A network of natural land and riparian habitats will connect corridors for wildlife and species in greatest conservation need ~ *Partners work together to identify priority lands using existing data and public plans, then coordinate protection, restoration and enhancement activities in those priority areas. Work builds upon prior phases and is intended to continue into the future for maximum impact. Mapping shows progress in connecting corridors. Species collections and counts measure impact of activities over time on wildlife and species of greatest conservation need.*

Does this program include leveraged funding?

Yes

Explain the leverage:

Metro Big Rivers 10 will leverage the OHF appropriation with at least \$777,400 in other funds (13.3%). The partnership has secured commitments of supplemental funding from the partners, private sources, local government units, watershed districts / management organizations and park districts.

MLT encourages private landowners to fully or partially donate the appraised value of their conservation easement. This donated value is shown as leveraged funds in the proposal. MLT has a long track record gaining landowner participation in this fashion. To date across all MBR grants, \$1,866,000 in easement value has been donated by landowners as leverage. MLT expects a significant landowner contribution to continue in MBR Phase 10; a conservative estimate of leverage is \$840,000.

Crews of volunteers will add significant in-kind value to the restoration / enhancement projects. This value is not included in the leverage funds, but is important to note here. Volunteers effectively replace or enhance paid crews and contracts on many projects, saving funds. Use of volunteers also effectively educates and engages the community in conservation work, which is critical for the future of conservation.

Per MS 97A.056, Subd. 24, Please explain whether the request is supplanting or is a substitution for any previous funding that was not from a legacy fund and was used for the same purpose.

This funding will supplant other previous funding used for the same purpose.

Non-OHF Appropriations

Year	Source	Amount
2009	Other State	\$741,058
2012	Other State	\$684,449
2012	Local & Federal	\$413,561
2012	Private & Other	\$2,063,388
2013	Other State	\$2,130,284
2013	Local & Federal	\$1,320,606
2013	Private	\$1,253,038
2014	Other State	\$1,873,857
2014	Local	\$516,119
2014	Private	\$1,931,527
2015	Other State	\$2,224,751
2009	Local & Federal	\$230,310
2015	Local	\$1,295,000
2015	Private	\$1,449,198
2016	Other State	\$912,867
2016	Local & Federal	\$1,822,000
2016	Private	\$2,700,091
2017	Other State	\$630,060
2017	Local	\$739,800
2017	Private & Other	\$1,278,433
2018	Other State	\$656,593
2018	Local	\$253,321
2009	Private	\$940,884
2018	Private	\$2,025,433
2010	Other State	\$2,010,658
2010	Local & Federal	\$485,122
2010	Private	\$3,516,521
2011	Other State	\$1,429,358
2011	Local & Federal	\$543,900
2011	Private	\$1,578,572

How will you sustain and/or maintain this work after the Outdoor Heritage Funds are expended?

All public partners have committed to maintaining the restoration / enhancement habitat improvements. The MBR restore/enhance partners will raise public and private sources to continue the work past the grant timeline, and will work cooperatively with partners to ensure the project benefits are maintained.

Lands protected through easement by MLT will be sustained following best standards and practices. MLT is a nationally-accredited and insured land trust with a successful stewardship program that includes annual property

monitoring, records management, addressing inquiries, tracking ownership changes, investigating potential violations and defending the easement in case of a true violation. MLT provides habitat management plans to landowners and helps them access resources and technical expertise to undertake restoration, enhancement and ongoing management.

Lands ~~acquired in fee title~~ restored / enhanced by MVT for the Minnesota Valley National Wildlife Refuge will be sustained and maintained over the long-term by the USFWS. ~~Habitat restoration / enhancement will be completed by MVT prior to transfer to the USFWS.~~

Lands acquired in fee title by TPL will be conveyed to the DNR or local units of government for permanent stewardship. Initial site development and restoration costs are included in this proposal. TPL will work with the steward to develop habitat ~~plans~~.

Actions to Maintain Project Outcomes

Year	Source of Funds	Step 1	Step 2	Step 3
2022-26	FMR, GRG & Local Partners	Monitoring and assessment	Target actions to maintain habitat	Take restorative action to correct damage
Ongoing	MLT & Landowners (R/E Projects)	Monitoring and assessment	Engage landowners in identifying / undertaking management actions	-
Perpetual	MLT Stewardship & Enforcement Fund	Annual monitoring of completed easements	Enforcement actions, as necessary	-
2022-23	MVT / MN Valley Lands (MVT subsidiary) & USFWS	Post property after acquisition	Develop habitat restoration and enhancement (R/E) plans	Begin implementation of R/E activities
2023-26	MVT / MVL & USFWS	Conduct habitat R/E and management activities	Develop hunting plan, parking area, signage, as needed	Transfer property to USFWS
2022-23	TPL (OHF) & Public Partners	Post property	Develop habitat R/E plans	-
2023-26	TPL - Public Partners	Develop habitat R/E plans	Complete habitat R/E	Steward property for habitat and public recreation

Activity Details

Requirements

If funded, this program will meet all applicable criteria set forth in MS 97A.056?

Yes

Will county board or other local government approval be formally sought prior to acquisition, per 97A.056 subd 13(j)?**

No

Describe any measures to inform local governments of land acquisition under their jurisdiction:

We will notify local units of government as required by statute.

Is the land you plan to acquire (fee title) free of any other permanent protection?

Yes

Is the land you plan to acquire (easement) free of any other permanent protection?

Yes

Who will manage the easement?

Minnesota Land Trust

Who will be the easement holder?

Minnesota Land Trust

What is the anticipated number of easements (range is fine) you plan to accomplish with this appropriation?

4 to 6

Will restoration and enhancement work follow best management practices including MS 84.973 Pollinator Habitat Program?

Yes

Is the restoration and enhancement activity on permanently protected land per 97A.056, Subd 13(f), tribal lands, and/or public waters per MS 103G.005, Subd. 15 or on lands to be acquired in this program?

Yes

Where does the activity take place?

- SNA
- Permanently Protected Conservation Easements
- County/Municipal
- Refuge Lands

Land Use

Will there be planting of any crop on OHF land purchased or restored in this program?

Yes

Explain what will be planted:

The purpose of the Minnesota Land Trust's conservation easements is to protect existing high quality natural habitat and to preserve opportunities for future restoration. As such, we restrict any agricultural lands and use on the properties. In cases in which there are agricultural lands associated with the larger property, we will either carve the agricultural area out of the conservation easement or, in some limited cases, we may include a small percentage of agricultural lands if it is not feasible to carve those areas out. In such cases, however, we will not use OHF funds to pay the landowners for that portion of the conservation easement.

Restoration/Enhancement: Short-term use of agricultural crops is an accepted best practice for preparing a site for prairie restoration. For example, short-term use of soybeans could be used for restorations in order to control weed seedbeds prior to prairie planting. In some cases this necessitates the use of GMO treated products to facilitate herbicide use in order to control weeds present in the seedbank.

Are any of the crop types planted GMO treated?

True

Is this land currently open for hunting and fishing?

No

Will the land be open for hunting and fishing after completion?

Yes

Describe any variation from the State of Minnesota regulations:

~~Lands acquired for the Minnesota Valley National Wildlife Refuge will be open for public hunting and fishing according to the National Wildlife Refuge Improvement Act. The lands will be opened through a public process prescribed by the Act. We anticipate hunting and fishing opportunities will be like those already established for lands previously acquired for the Refuge. For specific information, refer to the Refuge's website—http://www.fws.gov/midwest/MinnesotaValley/documents/hunting_regs.pdf.~~

Lands acquired by The Trust for Public Land will be open for fishing and hunting.

Who will eventually own the fee title land?

- State of MN
- Federal
- Local Unit of Government

Land acquired in fee will be designated as a:

- WMA
- National Wildlife Refuge

What is the anticipated number of closed acquisitions (range is fine) you plan to accomplish with this appropriation?

2 to 4

Will the eased land be open for public use?

No

Are there currently trails or roads on any of the proposed acquisitions?

Yes

Describe the types of trails or roads and the allowable uses:

We are not aware of any trails at this time, but some parcels acquired in fee title may have existing field roads or low maintenance trails.

Will the trails or roads remain and uses continue to be allowed after OHF acquisition?

Yes

How will maintenance and monitoring be accomplished?

~~Any pre-existing low-maintenance roads and trails on properties acquired by MVT for the MN Valley National Wildlife Refuge (USFWS) may be continued under a plan developed for the purpose~~

~~of property access for habitat maintenance and public use of the property for wildlife-dependent recreation (e.g., hunting, fishing, wildlife observation).~~

Trails and roads on eased lands are identified in the project baseline report and will be monitored annually as part of MLT's stewardship and enforcement protocols. Maintenance of permitted roads or trails in line with the easement terms will be the responsibility of the landowner.

TPL is not aware of any trails or roads on any of the acquisitions. If any are discovered on lands to be managed by the DNR, they will be managed per DNR policy. If they are discovered on lands to be managed by local units of government, they will be managed per a maintenance and monitoring plan developed in consultation with LSOHC staff.

Will new trails or roads be developed or improved as a result of the OHF acquisition?

No

Will the acquired parcels be restored or enhanced within this appropriation?

No

Timeline

Activity Name	Estimated Completion Date
FMR - Enhance 220 acres	June 2025
GRG - Restore 23 and enhance 75 acres	June 2025
MLT - Protect 157 acres under conservation easement	June 2023
MLT - Restore 100 acres	June 2025
MVT - Protect 300 acres through fee title acquisition <u>MVT - Restore / enhance 300 acres</u>	June 2023 <u>June 2025</u>
TPL - Protect 235 acres through fee title acquisition	June 2023

Date of Final Report Submission: 11/01/2025

Availability of Appropriation: Subd. 7. Availability of Appropriation

Money appropriated in this section may not be spent on activities unless they are directly related to and necessary for a specific appropriation and are specified in the accomplishment plan approved by the Lessard-Sams Outdoor Heritage Council. Money appropriated in this section must not be spent on indirect costs or other institutional overhead charges that are not directly related to and necessary for a specific appropriation. Unless otherwise provided, the amounts in this section are available until June 30, 2023. For acquisition of real property, the amounts in this section are available until June 30, 2024, if a binding agreement with a landowner or purchase agreement is entered into by June 30, 2023, and closed no later than June 30, 2024. Funds for restoration or enhancement are available until June 30, 2025, or five years after acquisition, whichever is later, in order to complete initial restoration or enhancement work. If a project receives at least 15 percent of its funding from federal funds, the time of the appropriation may be extended to equal the availability of federal funding to a maximum of six years if the federal funding was confirmed and included in the original approved draft accomplishment plan. Funds appropriated for fee title acquisition of land may be used to restore, enhance, and

provide for public use of the land acquired with the appropriation. Public-use facilities must have a minimal impact on habitat in acquired lands.

Budget

Budget reallocations up to 10% do not require an amendment to the Accomplishment Plan.

Grand Totals Across All Partnerships

Item	Funding Request	Leverage	Leverage Source	Total
Personnel	\$413,000	\$63,000 <u>\$93,000</u>	3M Foundation, Flint Hills Resources, Great River Greening, Minnehaha Creek Watershed District, Three Rivers Park District, City of Andover, MVT, USFWS In-Kind	\$476,000 <u>\$506,000</u>
Contracts	\$860,500 <u>\$1,560,500</u>	\$61,000 <u>\$146,000</u>	Washington County Parks, Flint Hills Resources, Minnesota Valley Trust	\$921,500 <u>\$1,006,500</u>
Fee Acquisition w/ PILT	\$2,813,000	\$100,000	-, RIM	\$2,913,000
Fee Acquisition w/o PILT	\$1,043,500 <u>\$242,500</u>	\$200,000 -	-	\$1,243,500 <u>\$1,043,500</u>
Easement Acquisition	\$869,200	\$255,000	-, Private Landowners	\$1,124,200
Easement Stewardship	\$48,000	-	-	\$48,000
Travel	\$16,300	\$2,000	-, Private	\$18,300
Professional Services	\$200,500	-	-	\$200,500
Direct Support Services	\$106,500	\$93,400	-, Private, Private	\$199,900
DNR Land Acquisition Costs	\$28,800	-	-	\$28,800
Capital Equipment	-	-	-	-
Other Equipment/Tools	\$5,000	-	-	\$5,000
Supplies/Materials	\$28,700 <u>\$129,700</u>	\$3,000 <u>\$88,000</u>	-, Vadnais Lake Area Watershed Management Organization, Minnesota Valley Trust	\$31,700 <u>\$116,700</u>
DNR IDP	\$40,000	-	-	\$40,000
Grand Total	\$6,473,000	\$777,400	-	\$7,250,400

Partner: Friends of Mississippi River**Totals**

Item	Funding Request	Leverage	Leverage Source	Total
Personnel	\$29,000	\$30,000	3M Foundation, Flint Hills Resources	\$59,000
Contracts	\$266,000	\$61,000	Washington County Parks, Flint Hills Resources	\$327,000
Fee Acquisition w/ PILT	-	-	-	-
Fee Acquisition w/o PILT	-	-	-	-
Easement Acquisition	-	-	-	-
Easement Stewardship	-	-	-	-
Travel	\$1,300	-	-	\$1,300
Professional Services	-	-	-	-
Direct Support Services	-	-	-	-
DNR Land Acquisition Costs	-	-	-	-
Capital Equipment	-	-	-	-
Other Equipment/Tools	-	-	-	-
Supplies/Materials	\$3,700	-	-	\$3,700
DNR IDP	-	-	-	-
Grand Total	\$300,000	\$91,000	-	\$391,000

Personnel

Position	Annual FTE	Years Working	Funding Request	Leverage	Leverage Source	Total
FMR Personnel (Ecologists, Conservation Director, Stewardship Staff, Bookkeeper)	0.37	3.0	\$29,000	\$30,000	3M Foundation, Flint Hills Resources	\$59,000

Partner: Great River Greening

Totals

Item	Funding Request	Leverage	Leverage Source	Total
Personnel	\$84,000	\$33,000	Great River Greening, Minnehaha Creek Watershed District, Three Rivers Park District, City of Andover	\$117,000
Contracts	\$228,000	-	-	\$228,000
Fee Acquisition w/ PILT	-	-	-	-
Fee Acquisition w/o PILT	-	-	-	-
Easement Acquisition	-	-	-	-
Easement Stewardship	-	-	-	-
Travel	\$5,000	-	-	\$5,000
Professional Services	-	-	-	-
Direct Support Services	\$20,000	\$50,400	Private	\$70,400
DNR Land Acquisition Costs	-	-	-	-
Capital Equipment	-	-	-	-
Other Equipment/Tools	\$4,000	-	-	\$4,000
Supplies/Materials	\$25,000	\$3,000	Vadnais Lake Area Watershed Management Organization	\$28,000
DNR IDP	-	-	-	-
Grand Total	\$366,000	\$86,400	-	\$452,400

Personnel

Position	Annual FTE	Years Working	Funding Request	Leverage	Leverage Source	Total
GRG Personnel (Ecologist, Technicians, etc.)	0.27	5.0	\$84,000	\$33,000	Great River Greening, Minnehaha Creek Watershed District, Three Rivers Park District, City of Andover	\$117,000

Partner: Minnesota Land Trust

Totals

Item	Funding Request	Leverage	Leverage Source	Total
Personnel	\$160,000	-	-	\$160,000
Contracts	\$326,500	-	-	\$326,500
Fee Acquisition w/ PILT	-	-	-	-
Fee Acquisition w/o PILT	-	-	-	-
Easement Acquisition	\$869,200	\$255,000	Private Landowners	\$1,124,200
Easement Stewardship	\$48,000	-	-	\$48,000
Travel	\$10,000	-	-	\$10,000
Professional Services	\$133,000	-	-	\$133,000
Direct Support Services	\$43,500	-	-	\$43,500
DNR Land Acquisition Costs	\$8,800	-	-	\$8,800
Capital Equipment	-	-	-	-
Other Equipment/Tools	\$1,000	-	-	\$1,000
Supplies/Materials	-	-	-	-
DNR IDP	-	-	-	-
Grand Total	\$1,600,000	\$255,000	-	\$1,855,000

Personnel

Position	Annual FTE	Years Working	Funding Request	Leverage	Leverage Source	Total
MLT Protection Staff	0.36	3.0	\$110,000	-	-	\$110,000
MLT Restoration Staff	0.18	3.0	\$50,000	-	-	\$50,000

Partner: Minnesota Valley Trust

Totals

Item	Funding Request	Leverage	Leverage Source	Total
Personnel	-	<u>\$30,000</u>	MVT, USFWS In-Kind	<u>\$30,000</u>
Contracts	<u>\$700,000</u>	<u>\$85,000</u>	Minnesota Valley Trust	<u>\$85,000</u>
Fee Acquisition w/ PILT	-	-	-	-
Fee Acquisition w/o PILT	<u>\$801,000</u> -	<u>\$200,000</u> -	-	<u>\$1,001,000</u> <u>\$801,000</u>
Easement Acquisition	-	-	-	-
Easement Stewardship	-	-	-	-
Travel	-	-	-	-
Professional Services	-	-	-	-
Direct Support Services	-	-	-	-
DNR Land Acquisition Costs	-	-	-	-
Capital Equipment	-	-	-	-
Other Equipment/Tools	-	-	-	-
Supplies/Materials	<u>\$101,000</u>	<u>\$85,000</u>	Minnesota Valley Trust	<u>\$85,000</u>
DNR IDP	-	-	-	-
Grand Total	\$801,000	\$200,000	-	\$1,001,000

Personnel

Position	Annual FTE	Years Working	Funding Request	Leverage	Leverage Source	Total
<u>MVT, USFWS Personnel</u>	-	-	-	<u>\$30,000</u>	<u>MVT, USFWS In-Kind</u>	<u>\$30,000</u>

Partner: Trust for Public Land**Totals**

Item	Funding Request	Leverage	Leverage Source	Total
Personnel	\$140,000	-	-	\$140,000
Contracts	\$40,000	-	-	\$40,000
Fee Acquisition w/ PILT	\$2,813,000	\$100,000	RIM	\$2,913,000
Fee Acquisition w/o PILT	\$242,500	-	-	\$242,500
Easement Acquisition	-	-	-	-
Easement Stewardship	-	-	-	-
Travel	-	\$2,000	Private	\$2,000
Professional Services	\$67,500	-	-	\$67,500
Direct Support Services	\$43,000	\$43,000	Private	\$86,000
DNR Land Acquisition Costs	\$20,000	-	-	\$20,000
Capital Equipment	-	-	-	-
Other Equipment/Tools	-	-	-	-
Supplies/Materials	-	-	-	-
DNR IDP	\$40,000	-	-	\$40,000
Grand Total	\$3,406,000	\$145,000	-	\$3,551,000

Personnel

Position	Annual FTE	Years Working	Funding Request	Leverage	Leverage Source	Total
TPL Personnel (Protection, Legal staff)	0.28	3.0	\$140,000	-	-	\$140,000

Amount of Request: \$6,473,000

Amount of Leverage: \$777,400

Leverage as a percent of the Request: 12.01%

DSS + Personnel: \$519,500

As a % of the total request: 8.03%

Easement Stewardship: \$48,000

As a % of the Easement Acquisition: 5.52%

How will this program accommodate the reduced appropriation recommendation from the original proposed requested amount?

We will reduce the outputs accordingly to accommodate the reduced appropriation.

Describe and explain leverage source and confirmation of funds:

Leverage includes expected donated easement value by landowners (MLT), committed and anticipated partner, other private, city, county, park district and watershed district / organization funds (FMR, GRG, MVT, TPL), and anticipated RIM funds (TPL). Partial donation of fee value by landowners is possible but not included (TPL).

Contracts

What is included in the contracts line?

Restoration and enhancement contracts with service providers (FMR, GRG, MLT). Habitat management plan

preparation, landowner outreach by county SWCD offices (MLT). Potential site clean-up and initial restoration activities (TPL).

Easement Stewardship

What is the number of easements anticipated, cost per easement for stewardship, and explain how that amount is calculated?

The average cost per easement to fund the Minnesota Land Trust's perpetual monitoring and enforcement obligations is \$24,000. This figure is derived from MLT's detailed stewardship funding "cost analysis" which is consistent with Land Trust Accreditation standards. MLT shares periodic updates to this cost analysis with LSOHC staff.

Travel

Does the amount in the travel line include equipment/vehicle rental?

Yes

Explain the amount in the travel line outside of traditional travel costs of mileage, food, and lodging

NA

I understand and agree that lodging, meals, and mileage must comply with the current MMB Commissioner Plan:

No

Direct Support Services

How did you determine which portions of the Direct Support Services of your shared support services is direct to this program?

Partners have direct support expenses essential to complete conservation projects, which include such costs as administrative support staff, office space, printing and office supplies.

GRG -- Approved by the DNR in September 2019, GRG's DSS rate includes direct and necessary expenditures that are not captured in other line items in the budget.

MLT -- Approved by the DNR in March 2017, MLT's DSS rate includes the allowable direct and necessary expenditures that are not captured in other line items in the budget. This is similar to the MLT's proposed federal indirect rate. MLT will apply this DNR-approved rate only to personnel expenses.

TPL -- DSS rate is based upon TPL's federally-approved indirect rate, which has been approved by the DNR. This rate does not include costs that are included in other budget lines. 50% of these costs are requested from the grant and 50% is contributed as leverage.

FMR and MVT are not requesting DSS.

Federal Funds

Do you anticipate federal funds as a match for this program?

No

Output Tables

Acres by Resource Type (Table 1)

Type	Wetland	Prairie	Forest	Habitat	Total Acres
Restore	0	23	0	<u>0 3</u>	<u>23 26</u>
Protect in Fee with State PILT Liability	45	80	73	0	198
Protect in Fee w/o State PILT Liability	<u>120 0</u>	<u>80 0</u>	<u>137 37</u>	0	<u>337 37</u>
Protect in Easement	0	0	0	157	157
Enhance	52	41	202	<u>100 397</u>	<u>395 692</u>
Total	<u>217 97</u>	<u>224 144</u>	<u>412 312</u>	<u>257 557</u>	<u>1,110</u>

How many of these Prairie acres are Native Prairie? (Table 1b)

Type	Native Prairie (acres)
Restore	0
Protect in Fee with State PILT Liability	0
Protect in Fee w/o State PILT Liability	0
Protect in Easement	0
Enhance	19
Total	19

Total Requested Funding by Resource Type (Table 2)

Type	Wetland	Prairie	Forest	Habitat	Total Funding
Restore	-	\$78,000	-	\$100 <u>\$300,100</u>	\$78,100 <u>\$378,100</u>
Protect in Fee with State PILT Liability	\$648,000	\$1,158,000	\$1,350,000	-	\$3,156,000
Protect in Fee w/o State PILT Liability	\$321,000 -	\$200,000 -	\$530,000 <u>\$250,000</u>	-	\$1,051,000 <u>\$250,000</u>
Protect in Easement	-	-	-	\$1,250,000	\$1,250,000
Enhance	\$186,000	\$30,000	\$372,000	\$349,900 <u>\$850,900</u>	\$937,900 <u>\$1,438,900</u>
Total	\$1,155,000 <u>\$834,000</u>	\$1,466,000 <u>\$1,266,000</u>	\$2,252,000 <u>\$1,972,000</u>	\$1,600,000 <u>\$2,401,000</u>	\$6,473,000

Acres within each Ecological Section (Table 3)

Type	Metro/Urban	Forest/Prairie	SE Forest	Prairie	N. Forest	Total Acres
Restore	<u>23 26</u>	0	0	0	0	<u>23 26</u>
Protect in Fee with State PILT Liability	198	0	0	0	0	198
Protect in Fee w/o State PILT Liability	<u>337 37</u>	0	0	0	0	<u>337 37</u>
Protect in Easement	157	0	0	0	0	157
Enhance	<u>395 692</u>	0	0	0	0	<u>395 692</u>
Total	<u>1,110</u>	0	0	0	0	<u>1,110</u>

Total Requested Funding within each Ecological Section (Table 4)

Type	Metro/Urban	Forest/Prairie	SE Forest	Prairie	N. Forest	Total Funding
Restore	\$78,100 <u>\$378,100</u>	-	-	-	-	\$78,100 <u>\$378,100</u>
Protect in Fee with State PILT Liability	\$3,156,000	-	-	-	-	\$3,156,000
Protect in Fee w/o State PILT Liability	\$1,051,000 <u>\$250,000</u>	-	-	-	-	\$1,051,000 <u>\$250,000</u>
Protect in Easement	\$1,250,000	-	-	-	-	\$1,250,000

Enhance	\$937,900	-	-	-	-	\$937,900
	\$1,438,900					\$1,438,900
Total	\$6,473,000	-	-	-	-	\$6,473,000

Average Cost per Acre by Resource Type (Table 5)

Type	Wetland	Prairie	Forest	Habitat
Restore	-	\$3,391	-	\$100,033
Protect in Fee with State PILT Liability	\$14,400	\$14,475	\$18,493	-
Protect in Fee w/o State PILT Liability	\$2,675	\$2,500	\$3,868	\$6,756
Protect in Easement	-	-	-	\$7,961
Enhance	\$3,576	\$731	\$1,841	\$3,499

Average Cost per Acre by Ecological Section (Table 6)

Type	Metro/Urban	Forest/Prairie	SE Forest	Prairie	N. Forest
Restore	\$3,395	\$14,542	-	-	-
Protect in Fee with State PILT Liability	\$15,939	-	-	-	-
Protect in Fee w/o State PILT Liability	\$3,118	\$6,756	-	-	-
Protect in Easement	\$7,961	-	-	-	-
Enhance	\$2,374	\$2,079	-	-	-

Target Lake/Stream/River Feet or Miles

1-5 2.8

Parcels

For restoration and enhancement programs ONLY: Managers may add, delete, and substitute projects on this parcel list based upon need, readiness, cost, opportunity, and/or urgency so long as the substitute parcel/project forwards the constitutional objectives of this program in the Project Scope table of this accomplishment plan. The final accomplishment plan report will include the final parcel list.

Sign-up Criteria?

[Yes - Sign up criteria is attached](#)

Explain the process used to identify, prioritize, and select the parcels on your list:

Restore / Enhance Parcels

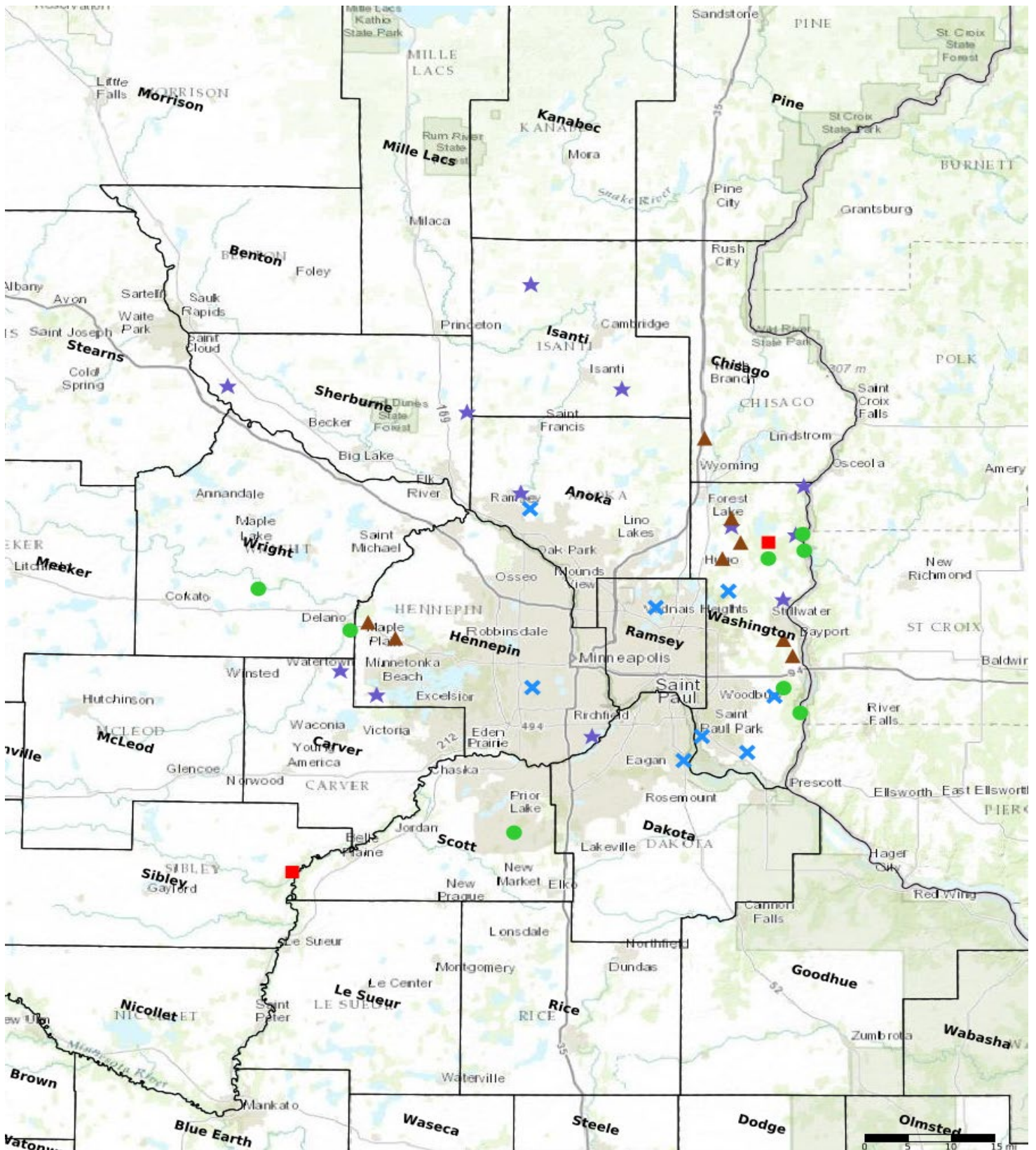
Name	County	TRDS	Acres	Est Cost	Existing Protection
GRG - Strootman Park	Anoka	03224219	10	\$52,000	Yes
GRG - Timber Rivers Park	Anoka	03225212	10	\$40,000	Yes
MLT - Oak Lake	Carver	11725211	84	\$100,000	Yes
FMR - Pine Bend Bluffs Natural Area	Dakota	02722227	84	\$81,530	Yes
GRG - Minnehaha Greenway, Methodist Easement	Hennepin	11721220	15	\$60,000	Yes
GRG - Three Rivers Park District Habitat Corridor Buffer	Hennepin	11724228	18	\$63,000	Yes
<u>MVT - Ike's Creek</u>	<u>Hennepin</u>	<u>02724212</u>	<u>3</u>	<u>\$300,000</u>	<u>Yes</u>
MLT - Medveckey Woods	Isanti	03423202	40	\$20,000	Yes
MLT - Stanchfield Creek	Isanti	03724231	5	\$10,000	Yes
GRG - Vadnais / Sucker Lake	Ramsey	03022219	45	\$152,000	Yes
MLT - Hunter Lake	Sherburne	03426224	30	\$60,000	Yes
MLT - Pickerel Lake	Sherburne	03430203	40	\$80,000	Yes
FMR - Cottage Grove Ravine Park	Washington	02721223	122	\$188,274	Yes
FMR - Riverside Park	Washington	02722212	14	\$29,254	Yes
MLT - Cedar Cliff	Washington	03219206	20	\$40,000	Yes
MLT - Hardwood Creek	Washington	03221235	80	\$80,000	Yes
MLT - Linkert Farm	Washington	03021209	42	\$118,000	Yes
MLT - Old Mill Stream	Washington	03120201	45	\$90,000	Yes
MLT - Silver Creek	Washington	03020216	50	\$100,000	Yes
MLT - Valley Creek	Washington	02820217	46	\$121,000	Yes

Protect Parcels

Name	County	TRDS	Acres	Est Cost	Existing Protection
TPL - Carlos Avery WMA Addition	Chisago	03321205	60	\$80,000	No
TPL - Prairie Hill WMA	Hennepin	11824223	307	\$4,100,000	No
TPL - Robina Lake WMA Addition	Hennepin	11824208	75	\$360,000	No
MLT - Cleary Lake	Scott	11422224	150	\$500,000	No
MVT - Jessenland Unit Addition, MN Valley National Wildlife Refuge	Sibley	11326213	200	\$650,000	No
MLT - Carnelian Creek	Washington	03120221	70	\$600,000	No
MLT - Saint Croix River (Science Museum of Minnesota)	Washington	03119218	93	\$793,500	No
MLT - St. Croix Marine 1	Washington	03119206	8	\$660,000	No
MLT - St. Croix River	Washington	02820226	53	\$937,000	No
MLT - Valley Creek	Washington	02820209	35	\$250,000	No
TPL - Bayport WMA Addition 1	Washington	02920209	195	\$3,010,000	No

TPL - Bayport WMA Addition 2	Washington	02920222	82	\$1,100,000	No
TPL - Hardwood Creek WMA Addition	Washington	03221226	470	\$700,000	No
TPL - Keystone Woods (Kelly Farm)	Washington	03121212	500	\$5,000,000	No
TPL - Long Lake Conservation Area	Washington	03120209	37	\$480,000	No
TPL - Paul Hugo Farms WMA Addition	Washington	03121222	230	\$1,000,000	No
MLT - Crow River	Wright	11825213	70	\$100,000	No
MLT - Crow River 2	Wright	11926220	80	\$0	No
MVT - Rapids Lake Unit Addition, MN Valley National Wildlife Refuge	Carver	11423206	118	\$826,000	No
MVT - San Francisco Unit Addition, MN Valley National Wildlife Refuge	Carver	11424201	168	\$546,000	No
MVT - Blakeley Unit Addition, MN Valley National Wildlife Refuge	Scott	11326236	194	\$630,500	No

Parcel Map



- Protect in Easement
- ▲ Protect in Fee with PILT
- Protect in Fee W/O PILT
- ★ Restore
- ✕ Enhance
- ⊕ Other