



Lessard-Sams Outdoor Heritage Council

Protecting Minnesota's Lakes of Outstanding Biological Significance - Phase 2 Laws of Minnesota 2023 Accomplishment Plan

General Information

Date: 05/23/2023

Project Title: Protecting Minnesota's Lakes of Outstanding Biological Significance - Phase 2

Funds Recommended: \$3,648,000

Legislative Citation: ML 2023, Ch. 40, Art. 2, Sec. 2, subd. 5(f)

Appropriation Language: \$3,648,000 the first year is to the commissioner of natural resources for agreements to acquire land in fee and permanent conservation easements and to restore and enhance lakes of outstanding biological significance in northeast and north-central Minnesota. Of this amount, \$1,507,000 is to Northern Waters Land Trust and \$2,141,000 is to Minnesota Land Trust. \$192,000 of the amount to Minnesota Land Trust is for establishing a monitoring and enforcement fund as approved in the accomplishment plan and subject to Minnesota Statutes, section 97A.056, subdivision 17. A list of proposed acquisitions must be included as part of the required accomplishment plan.

Manager Information

Manager's Name: Wayne Ostlie

Title: Director of Land Protection

Organization: Minnesota Land Trust

Address: 2356 University Avenue W Suite 240

City: St. Paul, MN 55114

Email: wostlie@mnland.org

Office Number: 651-917-6292

Mobile Number: 651-894-3870

Fax Number:

Website: www.mnland.org

Location Information

County Location(s): Beltrami, Hubbard and Cass.

Eco regions in which work will take place:

- Northern Forest

Activity types:

- Protect in Easement
- Protect in Fee

Priority resources addressed by activity:

- Habitat
- Forest

Narrative

Abstract

This program will bring focused conservation to one of Minnesota's priority aquatic resources, Lakes of Outstanding Biological Significance. These threatened lakes possess outstanding fisheries and provide habitat for a variety of Species in Greatest Conservation Need (SGCN); yet, at present, no habitat protection program specifically targets these priority resources. Through this proposal, the Minnesota Land Trust and Northern Waters Land Trust will protect through perpetual conservation easement and fee acquisition 492 acres of habitat and 0.65 miles of shoreland associated with the top 10% of these lakes in northeast and northcentral Minnesota.

Design and Scope of Work

Northern Minnesota's lakes comprise one of the most biologically important systems in the state for fish, game and wildlife. They are also one of its most threatened. The development and disturbance of the state's remaining highest quality lakes – Lakes of Outstanding Biological Significance (LOBS) - continues to be a threat identified in many of the State's resource protection plans, including the most recent One-Watershed-One-Plan documents and County Water Plans. These lakes represent the "best of the best" aquatic and shoreland habitat and are characterized by exceptional fisheries (both game and non-game), high aquatic plant richness and floristic quality, and populations of endangered or threatened plant and imperiled lake bird species. These lakes are priorities for protection.

To preserve this important component of Minnesota's aquatic natural heritage, Minnesota Land Trust (MLT) and Northern Waters Land Trust (NWLTL) propose to target these LOBS for protection via conservation easements and fee title acquisition. Fee title acquisitions under this program will be conveyed to the MN DNR for long-term management and permanent protection.

This Program fills an otherwise unmet need related to the protection of this resource; no other program is focused principally on the protection of LOBS. This work builds on the success demonstrated in Phases 1-5 of MLT's Critical Shorelands Program and is a continuation of the Protecting Minnesota's Outstanding Biodiversity Lakes Program Phase 1 Program – all funded by the Outdoor Heritage Fund with LSOHC recommendation. NWLT has been added as a program partner due to their capacity to facilitate fee title acquisition of priority properties.

Together, program partners MLT and NWLT will protect 492 acres within watersheds of prioritized LOBS through permanent conservation easements and fee title acquisition. Thirty-four of such lakes have been prioritized for action based on an evaluation of DNR's benefit-cost score and investment priorities as identified in the County Water Plans and One-Watershed-One-Plan documents. NWLT submitted a proposal to the Midwest Glacial Lakes Partnership (that is highly ranked and is likely to receive funding) to develop a GIS parcel analysis to further refine and score parcels, and target properties that complete gaps in existing protected land, contain the highest-quality habitat, and provide the greatest leverage to the state.

MLT will seek donations of easement value and will purchase easements that help complete key complexes.

Conservation easements secured under this program will be drafted to prevent the fragmentation and destruction of habitat and ensure they remain ecologically viable and productive for fish, game and wildlife by prohibiting land uses that negatively impact the important habitat values.

Outcomes from this project include: 1) healthier populations of fish, waterfowl, and other species in greatest conservation need; 2) maintaining water quality of priority aquatic resources; 3) increased participation of private landowners in habitat protection projects; and 4) enhancement of prior state and local investments made in shoreland and forest conservation in the region. Program partners will strategically target complexes of protected lands in which these outcomes are maximized.

How does the plan address habitats that have significant value for wildlife species of greatest conservation need, and/or threatened or endangered species, and list targeted species?

The lakes and natural shorelands around Minnesota's celebrated lakes comprises one of the most biologically important systems in the state for fish, game and wildlife and is also one of its most threatened. This program will preserve critical shoreland and associated habitats identified by MN DNR as Lakes of Outstanding Biological Significance. These areas protect fish and wildlife populations including trout, walleye, northern pike, and other fish, waterfowl, and other SGCN and help maintain water quality of priority aquatic resources. Some SGCNs that would benefit include American Woodcock, Olive-sided Flycatcher, Golden-winged Warbler, Winter Wren, Black-backed Woodpecker, northern pike and smallmouth bass.

As noted previously, these lakes represent the "best of the best" aquatic and shoreland habitat and are characterized by exceptional fisheries (both game and non-game), high aquatic plant richness and floristic quality, and populations of endangered or threatened plant and imperiled lake bird species.

Numerous plans have identified the protection of these habitats as a conservation priority for Minnesota, including the Minnesota Wildlife Action Plan, DNR's Aquatic Management Area program, the State Conservation and Preservation Plan, Minnesota DNR Strategic Conservation Agenda, and Outdoor Heritage Fund: A 25 Year Framework. The central goal of this program is to protect high-quality habitat by securing permanent conservation easements and fee title acquisitions in strategic locations on high biodiversity lakes that do not have other protection programs available to them.

Describe how the plan uses science-based targeting that leverages or expands corridors and complexes, reduces fragmentation or protects areas identified in the MN County Biological Survey:

The proposal is significantly informed by scientific assessments and conversations with key scientists working in the field.

Our Program is informed heavily through input by MN DNR fisheries biologist Paul Radomski, who developed the methodology that is the basis for DNR's benefit-cost analysis of high-quality and high-value lakes that provides for the greatest return on investment. This benefit-cost score is a function of phosphorus sensitivity, lake size, and catchment disturbance. This benefit-cost analysis is one of the key criteria used in selecting priority LOBS targeted for protection.

Our approach is further informed by research completed by Cross and Jacobson (2013), which noted that phosphorus concentrations generally become elevated when watershed land use disturbance reached 25%. Their research further showed that lakes with watersheds that have less than 40% land use disturbance would be good candidates for protection. For this reason, our focus is on lakes having a protection level of greater than 60% in

place.

This proposal prioritizes 34 lakes through an evaluation of DNR's Lakes of Outstanding Biological Significance GIS layer for Northeast and North-central Minnesota. Each lake was analyzed relative to the following criteria: 1) Protection level – based on percent of protected lands in each lake's watershed 2) Opportunity for protection – based on the number of private parcels greater than 35 acres for each lake, and 3) DNR's benefit-cost analysis – selection of high-quality, high-value lakes that likely provide the greatest return on investment. In addition, we reviewed County Water Plans and One-Watershed-One-Plan documents to cross reference priority lakes for protection identified in these plans. Based on this analysis 34 lakes were prioritized.

When evaluating individual parcels, the following resources will further inform protection priorities: Minnesota's Wildlife Action Plan 2015-2025; Sensitive Lakeshore inventories that have been completed in Cass, Crow Wing, Aitkin and Itasca counties.

Which two sections of the Minnesota Statewide Conservation and Preservation Plan are most applicable to this project?

- H2 Protect critical shoreland of streams and lakes
- H6 Protect and restore critical in-water habitat of lakes and streams

Which two other plans are addressed in this program?

- Long Range Plan for Fisheries Management
- Minnesota's Wildlife Action Plan 2015-2025

Which LSOHC section priorities are addressed in this program?

Northern Forest

- Protect shoreland and restore or enhance critical habitat on wild rice lakes, shallow lakes, cold water lakes, streams and rivers, and spawning areas

Outcomes

Programs in the northern forest region:

- Healthy populations of endangered, threatened, and special concern species as well as more common species ~ *Shorelands are protected from development and fragmentation. This program will permanently protect 492 acres associated with some of the most biologically outstanding shoreland in northern Minnesota and approximately 0.65 miles of undeveloped shoreline. Measure: Acres protected.*

Does this program include leveraged funding?

Yes

Explain the leverage:

The Minnesota Land Trust encourages landowners to fully or partially donate the value of conservation easements. The leverage portion of the easement acquisition line item (\$254,000) is a conservative estimate of value we expect to see donated by landowners participating in the program. Northern Waters Land Trust expects \$111,000 in leverage through landowners and lake associations for fee acquisitions and \$37,600 through the USFWS Midwest Glacial Lakes Partnership for parcel prioritization.

Per MS 97A.056, Subd. 24, Please explain whether the request is supplanting or is a substitution for any previous funding that was not from a legacy fund and was used for the same purpose.

This request is not supplanting or substituting for any previous funding. This is entirely new work.

How will you sustain and/or maintain this work after the Outdoor Heritage Funds are expended?

The land protected through conservation easements will be sustained through the best standards and practices for conservation easement stewardship. The Minnesota Land Trust is a nationally-accredited and insured land trust with a very successful stewardship program that includes annual property monitoring, effective records management, addressing inquiries and interpretations, tracking changes in ownership, investigating potential violations and defending the easement in case of a true violation. Funding for these easement stewardship activities is included in the project budget.

In addition, the Land Trust prepares for each landowner a habitat management plan that provides recommendations for use in ecologically managing the property over time. The Land Trust actively encourages landowners to manage their properties in line with the conservation easement, and works with landowners to address any financial or informational obstacles that stand in the way of them doing so.

Actions to Maintain Project Outcomes

Year	Source of Funds	Step 1	Step 2	Step 3
2028 and in perpetuity	MLT Long-Term Stewardship and Enforcement Fund	Annual monitoring of all easement projects	Enforcement as necessary	-

Provide an assessment of how your program celebrates cultural diversity or reaches diverse communities in Minnesota, including reaching low- and moderate-income households:

One of the Minnesota Land Trust's core public values is a commitment to diversity, equity, and inclusion. We have been engaged in a multi-year-long process to assess how the conservation community—and the Minnesota Land Trust in particular—can better address these issues. To date, we have demonstrated this commitment when possible given the funding parameters and our unique role in working with private landowners, including numerous projects to protect the camps and nature centers that serve a diversity of Minnesota youth and a long-term partnership with the Fond du Lac Band of Lake Superior Chippewa on wild rice restoration.

Going forward, we intend to build on this engagement by using diversity, equity, and inclusion as a lens in project, partner, and contractor selection. In each of our program areas, we intend to listen and seek out potential, authentic partnerships that can advance our goals of conserving the best of Minnesota's remaining habitats and, at the same time, being a more inclusive organization.

One related program we just recently launched is the "Ambassador Lands Program" which connects willing conservation landowners to diverse community groups that desire access to private land for a variety of programming purposes, such as youth mentor hunts, cultural or ceremonial use, conservation employment training, nature-based education, and much more. This would add greatly to the more universal public benefits of conserved lands such as wildlife habitat, clean water, and climate mitigation. Finally, we welcome more conversations with the LSOHC and conservation community about how these values can be better manifest in all our shared work going forward.

Activity Details

Requirements

If funded, this program will meet all applicable criteria set forth in MS 97A.056?

Yes

Will county board or other local government approval be formally sought prior to acquisition, per 97A.056 subd 13(j)?**

Yes

Is the land you plan to acquire (fee title) free of any other permanent protection?

Yes

Is the land you plan to acquire (easement) free of any other permanent protection?

Yes

Who will manage the easement?

Minnesota Land Trust will manage all easements.

Who will be the easement holder?

Minnesota Land Trust will hold all easements.

What is the anticipated number of easements (range is fine) you plan to accomplish with this appropriation?

The Minnesota Land Trust expects to close 5-8 conservation easements, depending on size and cost of projects.

Land Use

Will there be planting of any crop on OHF land purchased or restored in this program?

No

Is this land currently open for hunting and fishing?

No

Will the land be open for hunting and fishing after completion?

Yes

Describe any variation from the State of Minnesota regulations:

All fee title acquisitions conveyed to a public agency will be open to hunting and fishing.

Who will eventually own the fee title land?

- State of MN

Land acquired in fee will be designated as a:

- WMA
- AMA

What is the anticipated number of closed acquisitions (range is fine) you plan to accomplish with this appropriation?

Northern Waters Land Trust will close an anticipated 3-4 fee title acquisitions.

Will the eased land be open for public use?

No

Are there currently trails or roads on any of the proposed acquisitions?

Yes

Describe the types of trails or roads and the allowable uses:

Most conservation easements are established on private lands, many of which have driveways, field roads and trails located on them. Often, these established trails and roads are permitted in the terms of the easement and can be maintained for personal use if their use does not significantly impact the conservation values of the property. Creation of new roads/trails or expansion of existing ones is typically not allowed.

Will the trails or roads remain and uses continue to be allowed after OHF acquisition?

Yes

How will maintenance and monitoring be accomplished?

Existing trails and roads are identified in the project baseline report and will be monitored annually as part of the Land Trust's stewardship and enforcement protocols. Maintenance of permitted roads/trails in line with the terms of the easement will be the responsibility of the landowner.

Will new trails or roads be developed or improved as a result of the OHF acquisition?

No

Will the acquired parcels be restored or enhanced within this appropriation?

No

Minnesota Land Trust - We do not anticipate R/E needs associated with our parcels. If after prioritization and selection R/E needs exist, we will budget for that work in upcoming proposals.

Northern Waters Land Trust - No R/E will occur on fee title lands.

Will the land that you acquire (fee or easement) be restored or enhanced within this program's funding and availability?

No

Explain how, when, and source of the R/E work:

Minnesota Land Trust - We do not anticipate R/E needs associated with our parcels. If after prioritization and selection R/E needs exist, we will budget for that work in upcoming proposals.

Timeline

Activity Name	Estimated Completion Date
Acquire conservation easements: 1) identify priority landowners, 2) negotiate, draft and complete easements, and 3) dedicate funds for long-term stewardship.	June 30, 2027
Protection of 146 acres via fee acquisition; conveyance to Minnesota DNR.	June 30, 2027

Date of Final Report Submission: 11/01/2027

Availability of Appropriation: Subd. 7. Availability of Appropriation

(a) Money appropriated in this section may not be spent on activities unless they are directly related to and necessary for a specific appropriation and are specified in the accomplishment plan approved by the Lessard-Sams

Outdoor Heritage Council. Money appropriated in this section must not be spent on indirect costs or other institutional overhead charges that are not directly related to and necessary for a specific appropriation. Money appropriated to acquire land in fee may be used to restore, enhance, and provide for public use of the land acquired with the appropriation. Public-use facilities must have a minimal impact on habitat in acquired lands.

(b) Money appropriated in this section is available as follows:

- (1) money appropriated for acquiring real property is available until June 30, 2027;
- (2) money appropriated for restoring and enhancing land acquired with an appropriation in this act is available for four years after the acquisition date with a maximum end date of June 30, 2031;
- (3) money appropriated for restoring or enhancing other land is available until June 30, 2028;
- (4) notwithstanding clauses (1) to (3), money appropriated for a project that receives at least 15 percent of its funding from federal funds is available until a date sufficient to match the availability of federal funding to a maximum of six years if the federal funding was confirmed and included in the original approved draft accomplishment plan; and
- (5) money appropriated for other projects is available until the end of the fiscal year in which it is appropriated.

DRAFT

Budget

Budget reallocations up to 10% do not require an amendment to the Accomplishment Plan.

Grand Totals Across All Partnerships

Item	Funding Request	Leverage	Leverage Source	Total
Personnel	\$255,000	-	-	\$255,000
Contracts	\$58,000	\$37,600	USFWS - Midwest Glacial Lake Partnership	\$95,600
Fee Acquisition w/ PILT	\$1,253,000	\$117,000	-, Landowners, Lake Associations	\$1,370,000
Fee Acquisition w/o PILT	-	-	-	-
Easement Acquisition	\$1,446,000	\$254,000	-, Landowners	\$1,700,000
Easement Stewardship	\$192,000	-	-	\$192,000
Travel	\$22,000	-	-	\$22,000
Professional Services	\$303,000	-	-	\$303,000
Direct Support Services	\$116,000	-	-	\$116,000
DNR Land Acquisition Costs	-	-	-	-
Capital Equipment	-	-	-	-
Other Equipment/Tools	\$1,000	-	-	\$1,000
Supplies/Materials	\$2,000	-	-	\$2,000
DNR IDP	-	-	-	-
Grand Total	\$3,648,000	\$408,600	-	\$4,056,600

Partner: Northern Waters Land Trust**Totals**

Item	Funding Request	Leverage	Leverage Source	Total
Personnel	\$85,000	-	-	\$85,000
Contracts	-	\$37,600	USFWS - Midwest Glacial Lake Partnership	\$37,600
Fee Acquisition w/ PILT	\$1,253,000	\$117,000	Landowners, Lake Associations	\$1,370,000
Fee Acquisition w/o PILT	-	-	-	-
Easement Acquisition	-	-	-	-
Easement Stewardship	-	-	-	-
Travel	\$7,000	-	-	\$7,000
Professional Services	\$90,000	-	-	\$90,000
Direct Support Services	\$70,000	-	-	\$70,000
DNR Land Acquisition Costs	-	-	-	-
Capital Equipment	-	-	-	-
Other Equipment/Tools	-	-	-	-
Supplies/Materials	\$2,000	-	-	\$2,000
DNR IDP	-	-	-	-
Grand Total	\$1,507,000	\$154,600	-	\$1,661,600

Personnel

Position	Annual FTE	Years Working	Funding Request	Leverage	Leverage Source	Total
NWLT Conservation Staff	0.4	4.0	\$85,000	-	-	\$85,000

Partner: Minnesota Land Trust**Totals**

Item	Funding Request	Leverage	Leverage Source	Total
Personnel	\$170,000	-	-	\$170,000
Contracts	\$58,000	-	-	\$58,000
Fee Acquisition w/ PILT	-	-	-	-
Fee Acquisition w/o PILT	-	-	-	-
Easement Acquisition	\$1,446,000	\$254,000	Landowners	\$1,700,000
Easement Stewardship	\$192,000	-	-	\$192,000
Travel	\$15,000	-	-	\$15,000
Professional Services	\$213,000	-	-	\$213,000
Direct Support Services	\$46,000	-	-	\$46,000
DNR Land Acquisition Costs	-	-	-	-
Capital Equipment	-	-	-	-
Other Equipment/Tools	\$1,000	-	-	\$1,000
Supplies/Materials	-	-	-	-
DNR IDP	-	-	-	-
Grand Total	\$2,141,000	\$254,000	-	\$2,395,000

Personnel

Position	Annual FTE	Years Working	Funding Request	Leverage	Leverage Source	Total
MLT Protection Staff	0.43	4.0	\$170,000	-	-	\$170,000

Amount of Request: \$3,648,000**Amount of Leverage:** \$408,600**Leverage as a percent of the Request:** 11.2%**DSS + Personnel:** \$371,000**As a % of the total request:** 10.17%**Easement Stewardship:** \$192,000**As a % of the Easement Acquisition:** 13.28%**How will this program accommodate the reduced appropriation recommendation from the original proposed requested amount?**

Recommended funds represented 40% of request, and were allocated as follows: MLT (33% of Request); NWLT (47% of Request). Outputs were scaled to 33% of request. Personnel/DSS was reduced to 45% of request; Contracts 71%; Acquisition 37%, and Professional Services 47%.

Describe and explain leverage source and confirmation of funds:

The leverage portion of MLT's easement acquisition line (\$289,000) is a conservative estimate of easement value expected be donated by landowners.

NWLT expects \$111,000 in leverage through landowners, lake associations and other sources; \$37,600 in leverage is in hand through the USFWS.

Personnel

Has funding for these positions been requested in the past?

Yes

Please explain the overlap of past and future staffing and position levels previously received and how that is coordinated over multiple years?

MLT - FTEs listed in the proposal are a coarse estimate of the personnel time required to deliver the grant outputs included in this proposal. An array of staff may work on projects to complete legal review, subcontracts, negotiating with landowners, drafting conservation easements, completing baseline reports and managing the grant. MLT's basis for billing is the individual protection project we work on, ensuring allocation to the appropriate grant award. And by using a timesheet-based approach we use only those personnel funds actually expended to achieve the goals of the grant.

NWLT estimates the personnel costs for fee title acquisition, conservation easement outreach and grant administration activities to accomplish the specific outcomes for each grant.

Contracts

What is included in the contracts line?

MLT - Funds in the contract line are for the writing of habitat management plans via qualified vendors, outreach to landowners through SWCDs and other local partners, and posting of easement boundaries.

Fee Acquisition

What is the anticipated number of fee title acquisition transactions?

Northern Waters Land Trust will close an anticipated 3-4 fee title acquisitions.

Easement Stewardship

What is the number of easements anticipated, cost per easement for stewardship, and explain how that amount is calculated?

The average cost per easement to fund the Minnesota Land Trust's perpetual monitoring and enforcement obligations is \$24,000, although in extraordinary circumstances a larger amount may be warranted. This figure is derived from MLT's detailed stewardship funding "cost analysis" which is consistent with Land Trust Accreditation standards. MLT shares periodic updates to this cost analysis with LSOHC staff.

Travel

Does the amount in the travel line include equipment/vehicle rental?

Yes

Explain the amount in the travel line outside of traditional travel costs of mileage, food, and lodging

Minnesota Land Trust staff regularly rent vehicles for grant-related purposes, which is a significant cost savings over use of personal vehicles.

I understand and agree that lodging, meals, and mileage must comply with the current MMB Commissioner Plan:

Yes

Direct Support Services

How did you determine which portions of the Direct Support Services of your shared support services is direct to this program?

MLT - In a process that was approved by the DNR on March 17, 2017, Minnesota Land Trust determined our direct support services rate to include all of the allowable direct and necessary expenditures that are not captured in other line items in the budget, which is similar to the Land Trust's proposed federal indirect rate. We will apply this DNR-approved rate only to personnel expenses to determine the total amount of direct support services.

NWLT - In a process approved by MNDNR on September 13 2021, Northern Waters Land Trust used a simplified allocation methodology that resulted in MNDNR approving an indirect rate of allowable expenses. NWLT anticipates a similar rate for this proposal.

Other Equipment/Tools

Give examples of the types of Equipment and Tools that will be purchased?

MLT - GPS units, field safety gear, etc.

Federal Funds

Do you anticipate federal funds as a match for this program?

Yes

Are the funds confirmed?

Yes

Is Confirmation Document attached?

[Yes](#)

- Cash : \$37,646

Output Tables

Acres by Resource Type (Table 1)

Type	Wetland	Prairie	Forest	Habitat	Total Acres
Restore	-	-	-	-	-
Protect in Fee with State PILT Liability	-	-	146	-	146
Protect in Fee w/o State PILT Liability	-	-	0	0	0
Protect in Easement	-	-	-	346	346
Enhance	-	-	-	-	-
Total	-	-	146	346	492

Total Requested Funding by Resource Type (Table 2)

Type	Wetland	Prairie	Forest	Habitat	Total Funding
Restore	-	-	-	-	-
Protect in Fee with State PILT Liability	-	-	\$1,477,000	-	\$1,477,000
Protect in Fee w/o State PILT Liability	-	-	-	-	-
Protect in Easement	-	-	-	\$2,171,000	\$2,171,000
Enhance	-	-	-	-	-
Total	-	-	\$1,477,000	\$2,171,000	\$3,648,000

Acres within each Ecological Section (Table 3)

Type	Metro/Urban	Forest/Prairie	SE Forest	Prairie	N. Forest	Total Acres
Restore	-	-	-	-	-	-
Protect in Fee with State PILT Liability	-	-	-	-	146	146
Protect in Fee w/o State PILT Liability	-	-	-	-	0	0
Protect in Easement	-	-	-	-	346	346
Enhance	-	-	-	-	-	-
Total	-	-	-	-	492	492

Total Requested Funding within each Ecological Section (Table 4)

Type	Metro/Urban	Forest/Prairie	SE Forest	Prairie	N. Forest	Total Funding
Restore	-	-	-	-	-	-
Protect in Fee with State PILT Liability	-	-	-	-	\$1,477,000	\$1,477,000
Protect in Fee w/o State PILT Liability	-	-	-	-	-	-
Protect in Easement	-	-	-	-	\$2,171,000	\$2,171,000
Enhance	-	-	-	-	-	-
Total	-	-	-	-	\$3,648,000	\$3,648,000

Average Cost per Acre by Resource Type (Table 5)

Type	Wetland	Prairie	Forest	Habitat
Restore	-	-	-	-
Protect in Fee with State PILT Liability	-	-	\$10,116	-
Protect in Fee w/o State PILT Liability	-	-	-	-
Protect in Easement	-	-	-	\$6,274
Enhance	-	-	-	-

Average Cost per Acre by Ecological Section (Table 6)

Type	Metro/Urban	Forest/Prairie	SE Forest	Prairie	N. Forest
Restore	-	-	-	-	-
Protect in Fee with State PILT Liability	-	-	-	-	\$10,116
Protect in Fee w/o State PILT Liability	-	-	-	-	-
Protect in Easement	-	-	-	-	\$6,274
Enhance	-	-	-	-	-

Target Lake/Stream/River Feet or Miles

0.65 miles

Parcels

For restoration and enhancement programs ONLY: Managers may add, delete, and substitute projects on this parcel list based upon need, readiness, cost, opportunity, and/or urgency so long as the substitute parcel/project forwards the constitutional objectives of this program in the Project Scope table of this accomplishment plan. The final accomplishment plan report will include the final parcel list.

Parcel Information**Sign-up Criteria?**

No

Explain the process used to identify, prioritize, and select the parcels on your list:

Solicitation for potential projects employs a diverse strategy of direct outreach to landowners in high priority conservation areas and coordinated outreach with conservation partners including lake associations, Soil and Water Conservation Districts, and others. Leads for potential projects are pursued following initial assessment and scoring against criteria identified in established conservation plans. Criteria based scoring systems provide a standardized set of data from which multiple projects can be compared relative to each other and individual projects can be compared against a baseline. Scoring systems are a set of data, not a final, complete decision making tool. Local expertise and experience, programmatic goals, timelines, available resources, capacity, and other more subjective factors might also come into play in project selection and decision making.

The attached scoresheet provides an approach to criteria based scoring that considers: 1) Ecological Integrity/Viability as current status; 2) Threat/Urgency as a future scenario if protection is not afforded; and 3) Cost reflecting the overall value realized through the acquisition of a conservation easement (including a reflection of donative value). Ecological Integrity weights property size, condition, and context equally (at least as an initial starting point). The three primary factors, when taken together, provide a good estimate of long-term viability for biodiversity at the site: 1) Size of the parcel to be protected, 2) Condition of the habitat on the parcel, and 3) its Landscape context (both from a protection and ecological standpoint).

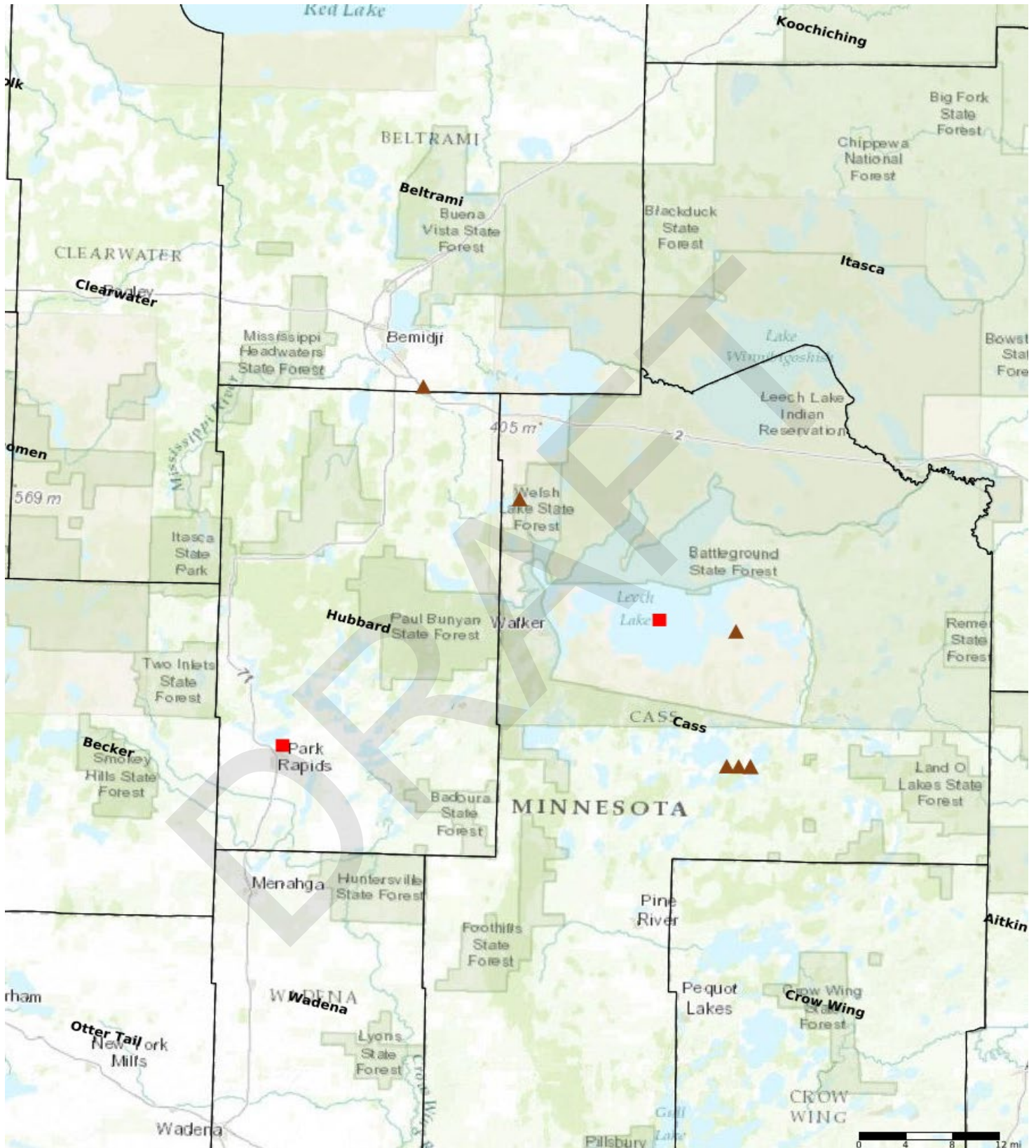
Protect Parcels

Name	County	TRDS	Acres	Est Cost	Existing Protection
Marquette Lake Watershed	Beltrami	14633236	29	\$300,000	No
Leech Lake Island	Cass	14229217	28	\$1,000,000	No
Lake Louise 3	Cass	14028221	41	-	No
Leech Lake Bluetow	Cass	14228221	48	-	No
Fish Hook Watershed	Hubbard	14035213	89	\$300,000	No

Protect Parcels with Buildings

Name	County	TRDS	Acres	Est Cost	Existing Protection	Buildings	Value of Buildings
Lake Louise 1	Cass	14028220	20	-	No	1	\$0
Lake Louise 2	Cass	14028222	33	-	No	1	\$1,000
Lake Louise 4	Cass	14028222	84	-	No	1	\$0
Steamboat Lake Watershed	Cass	14431220	23	-	No	3	\$9,300

Parcel Map



- Protect in Easement
- ▲ Protect in Fee with PILT
- Protect in Fee W/O PILT
- ★ Restore
- ✕ Enhance
- ⊕ Other