

ANOKA SAND PLAIN PARTNERSHIP PRIORITIES

- ◆ Protect, restore and enhance habitat cores and conservation corridors to minimize the impacts of new development and enhance native plant communities and wildlife resiliency.
- ◆ Sites are selected to meet Action Plan goals and based on habitat type, rare species, habitat connectivity, recreation opportunities, benefits to water, and landowner engagement.



Robert & Marilyn Burman WMA



Carlos Avery WMA



Cedar Creek Conservation Area



Pickerel Lake Conservation Easement

OUTSTANDING ECOSYSTEMS

- ◆ Over 150,000 acres in the ASP Ecoregion are ranked Outstanding or High Biodiversity by the MCBS.
- ◆ The ASP provides habitat for 97 known or predicted Species of Greatest Conservation Need and 131 federally or state endangered, threatened, or special concern.
- ◆ The ASP contains some of the best examples of the critically imperiled oak savanna, sand dunes, and shallow wetland plant communities.
- ◆ Sandhill cranes, trumpeter swans, red-headed woodpeckers, Blanding's turtles, and wild turkey make their home in the ASP.

CLOSE TO HOME RECREATION

- ◆ Notable ASP public open space include Sherburne NWR, Carlos Avery WMA, Crane Meadows NWR, Hellen Allison Savanna SNA, Sand Dunes State Forest, and Cedar Creek Ecosystem Science Preserve.
- ◆ The Mississippi and Rum River, and the many lakes are destinations for paddling and fishing.

QUALITY SURFACE WATER, GROUNDWATER AND DRINKING WATER

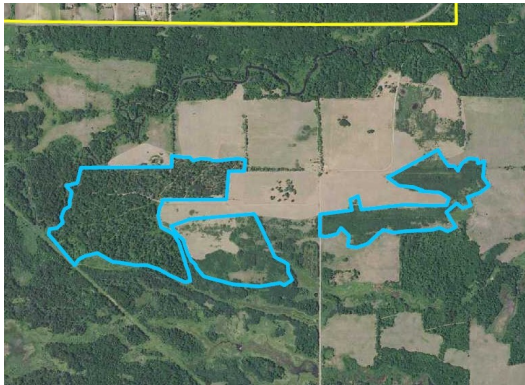
- ◆ The ASP is a primary recharge area for the aquifers of the Twin Cities Metro Area due to its infiltration rates and geologic intersection with aquifers.
- ◆ Numerous wetlands in the ASP provide flood protection, water purification, shoreline stabilization, groundwater recharge, and streamflow maintenance.



Anoka Sand Plain Habitat Conservation - Phase 8

- ◆ Expand Habitat Cores and Corridors through Conservation Easements.
- ◆ Protect rare species and SGCN through conservation easements, habitat restoration/enhancement and Rare Plant Rescue.
- ◆ Restore/enhance ASP priority habitats and increase biodiversity.

ASP Phase 8 Project Examples



Sherburne National Wildlife Refuge

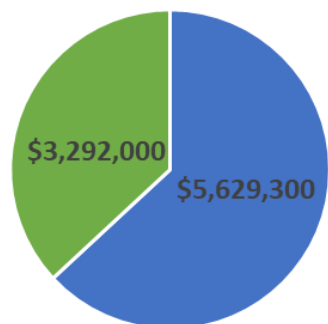
- ◆ Enhance 176 acres of oak savanna.
- ◆ Enhance habitat core.
- ◆ Restore/enhance ASP priority habitat.
- ◆ Increase biodiversity.
- ◆ Enhancement without herbicide. Repeated goat browsing after initial cut.
- ◆ Aligns with USFWS directives.
- ◆ Builds on numerous livestock projects.



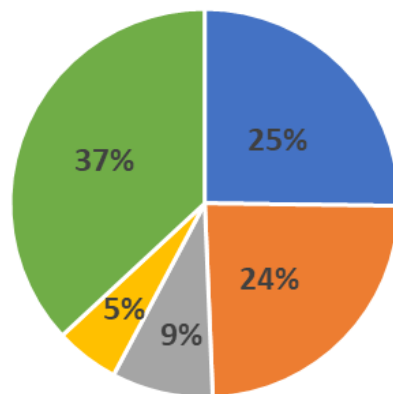
Big Elk Lake

- ◆ Restore 160 acres of prairie.
- ◆ Enhance 50 acres of oak savanna.
- ◆ Create habitat core.
- ◆ Restore/enhance ASP priority habitats.
- ◆ Increase biodiversity.
- ◆ Honor sacred land.
- ◆ Incorporate Tribal recommendations.

Funding Request Distribution



■ Conservation Easement
■ Restoration/Enhancement



Direct Recipient Project Management

- ◆ Geography/Location
- ◆ Organization Expertise
- ◆ Landowner Relationships
- ◆ Capacity

■ Great River Greening
■ Anoka Conservation District
■ Sherburne Parks
■ National Wild Turkey Federation
■ MN Land Trust