

# *MN Prairie Recovery Program*

- - Protect
- - Restore
- - **Enhance**

Presented by Neal Feeken

January 19, 2022





## Accomplishments: Phases 1-11

---

- 7,090 Acres Protected
- 1,800 Acres Restored
- 150,000+ Acres Enhanced
- 723,000 MTCO<sub>2</sub>e





# Enhancement Techniques

---

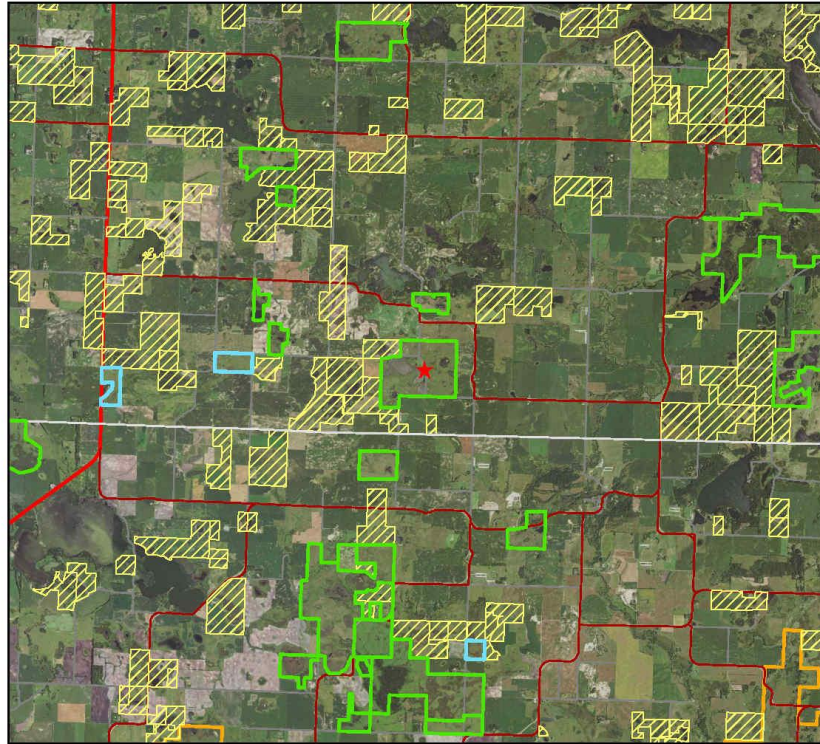
A photograph of a rolling landscape with hills and fields. The foreground is filled with tall, dry grasses and patches of vibrant red flowers. The middle ground shows rolling hills covered in similar vegetation. The background features a line of trees under a pale, overcast sky.







# Rolling Forks WPA

**Tree Removal, Grove Restoration & Interseeding**

**2018 - 2021**

# Rolling Forks WPA Area Map

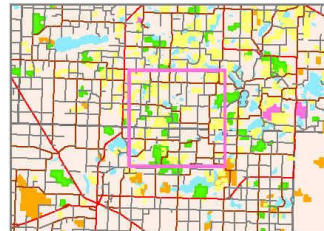


-  USFWS NTP
-  WPA
-  USFWS Easements
-  County Roads
-  Township Roads
-  WMA

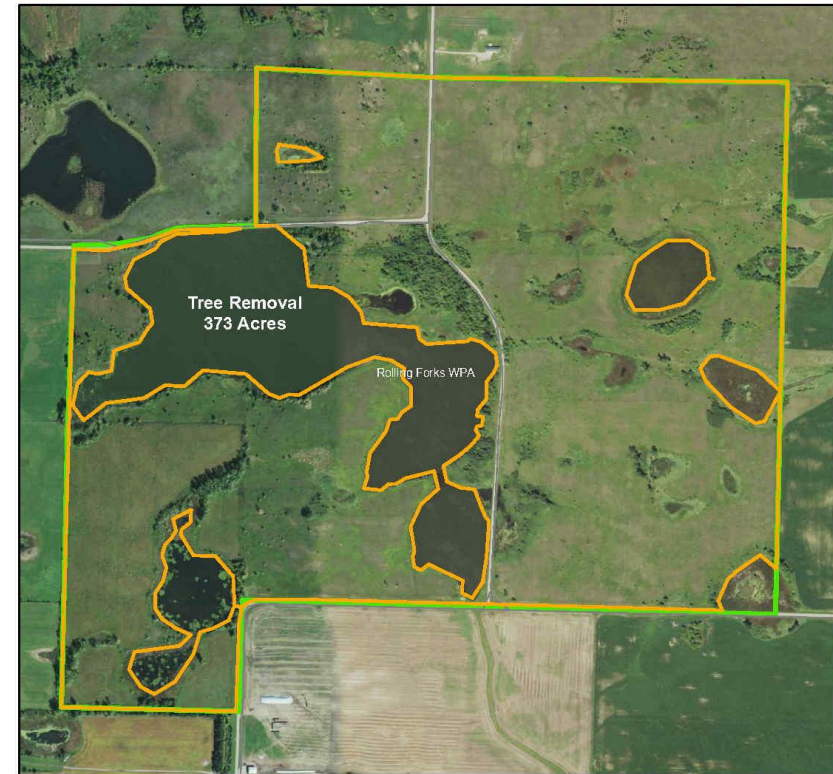
0 0.5 1 2 Miles



The Nature Conservancy 



# Rolling Forks WPA, Pope County Rolling Forks Township, T123N R38W Sec. 29-32

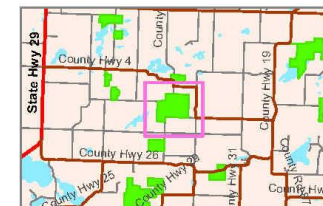


0 0.125 0.25 0.5 Miles



-  Tree Removal
-  WPA Boundary
-  County Roads
-  State Roads

The Nature Conservancy  
Protecting nature. Preserving life.™ 





**Before Tree Removal  
(Summer 2018)**

**After Tree Removal &  
Prescribed Fire (Spring 2021)**





**Scattered Siberian Elm  
In Prairie Restoration**

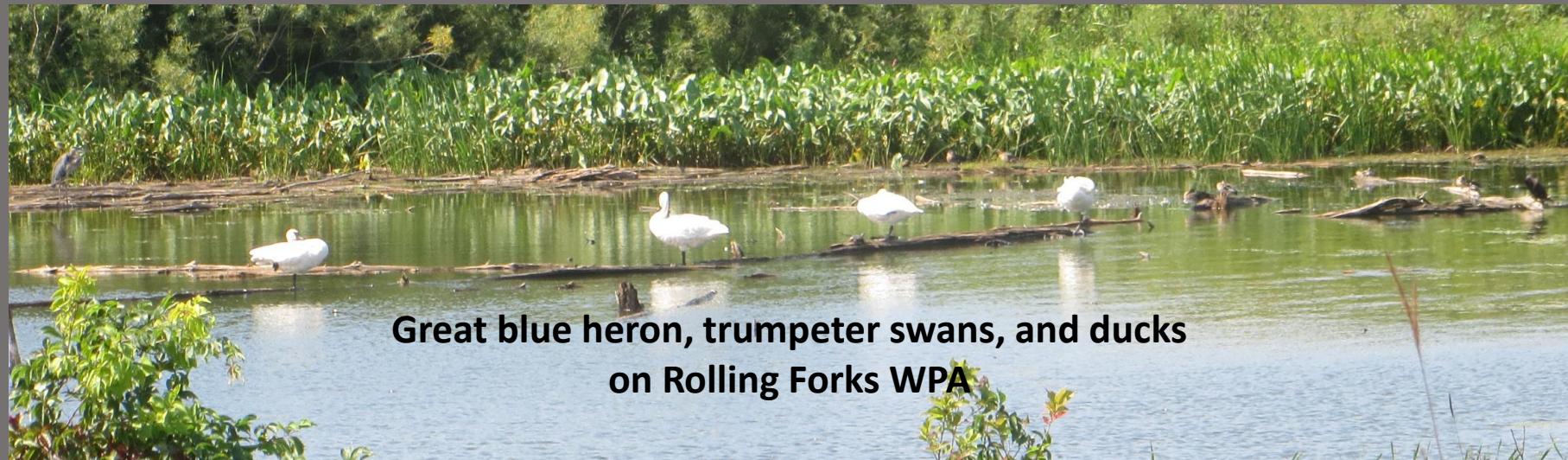
**Prairie Interseeding  
After Rx Burn**



**Prairie violet  
Flowering  
After Rx Burn  
(Spring 2021)**



**Blazing Star flowering  
After 2021 Rx Burn  
(Summer 2021)**

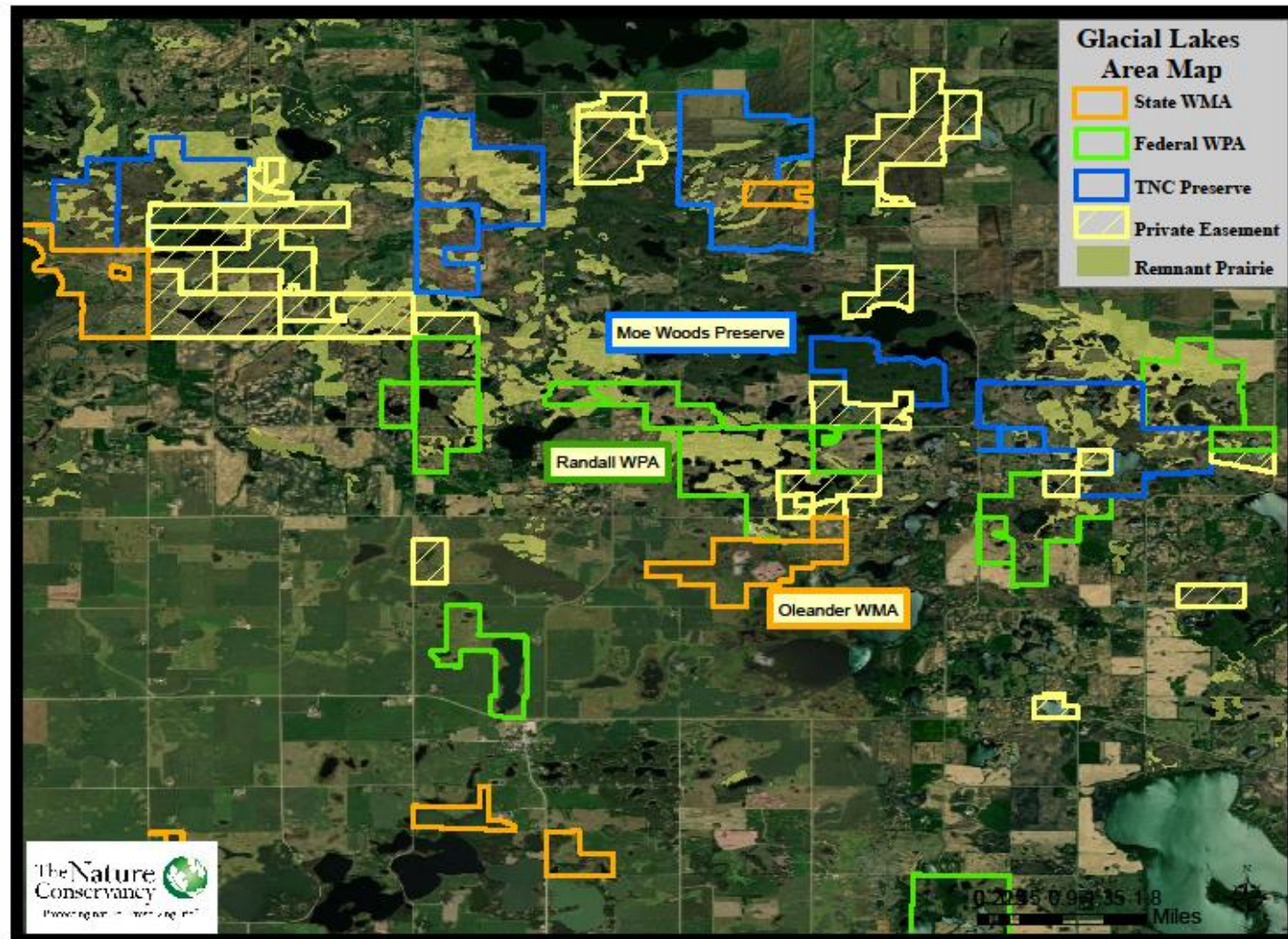


**Great blue heron, trumpeter swans, and ducks  
on Rolling Forks WPA**

# Oleander WMA/Randall WPA

**Tree Removal, Grove Restoration & Interseeding**

**2018 - 2021**





## Oleander WMA





Randall WPA



A photograph of a field of yellow wildflowers, likely Black-eyed Susans, at sunset. The sun is low on the horizon, creating a warm, golden glow and long shadows. The flowers are in the foreground and middle ground, with some in sharp focus and others blurred. The sky is a mix of blue and orange.

*Thank you for your support of  
Prairie Conservation!*