



Lessard-Sams Outdoor Heritage Council

Laws of Minnesota 2016 Accomplishment Plan

General Information

Date: 09/23/2021

Project Title: RIM Buffers for Wildlife and Water - Phase VI

Funds Recommended: \$6,708,000

Legislative Citation: ML 2016, Ch. 172, Art. 1, Sec. 2, Subd. 2(g)

Appropriation Language: \$6,708,000 the second year is to the Board of Water and Soil Resources to acquire permanent conservation easements and restore habitat under Minnesota Statutes, section 103F.515, to protect, restore, and enhance habitat by expanding the clean water fund riparian buffer program for at least equal wildlife benefits from buffers on private land. Of this amount, up to \$1,079,000 (from \$130,000 - amended in ML 2017) is to establish a monitoring and enforcement fund as approved in the accomplishment plan and subject to Minnesota Statutes, section 97A.056, subdivision 17. A list of permanent conservation easements must be provided as part of the final report.

Additional Legislative Changes: - In ML 2017, Ch. 91, Art. 1, Sec. 8: Laws 2016, chapter 172, article 1, section 2, subdivision 2, is amended to read:

(g) Reinvest In Minnesota (RIM) Buffers for Wildlife and Water - Phase VI

\$6,708,000 the second year is to the Board of Water and Soil Resources to acquire permanent conservation easements and restore habitat under Minnesota Statutes, section 103F.515, to protect, restore, and enhance habitat by expanding the clean water fund riparian buffer program for at least equal wildlife benefits from buffers on private land. Of this amount, up to \$1,079,000 is to establish a monitoring and enforcement fund as approved in the accomplishment plan and subject to Minnesota Statutes, section 97A.056, subdivision 17. A list of permanent conservation easements must be provided as part of the final report. [update \$ for monitor account]

M.L. 2019, First Special Session, Chapter 2, Article 1, Section 2, Subd. 10. Carryforwards (c) The availability of the appropriation in Laws 2016, chapter 172, article 1, section 2, subdivision 2, paragraph (g), Reinvest in Minnesota (RIM) Buffers for Wildlife and Water - Phase VI, is extended to June 30, 2025. This subdivision is effective the day following final enactment.

Amendment Description: Budget adjustment to add funds to easement acquisition line and reduce other budget lines as necessary.

Adjustment to parcel list to move easements between proposed and completed parcels.

Project manager update after Tabor Hoek's retirement.

Manager Information

Manager's Name: ~~Tabor Hoek~~ Dusty Van Thuyne

Title:

Organization: BWSR

Address: ~~1400 E. Lyon St.~~ 520 Lafayette Road North

City: ~~Marshall, MN 56258~~ St. Paul, MN 55155

Email: ~~tabor.hoek@state.mn.us~~ dusty.vanthuyne@state.mn.us

Office Number: ~~507-537-7260~~

Mobile Number: 651-508-0000

Fax Number:

Website: www.bwsr.state.mn.us

Location Information

County Location(s): Brown, Carver, Chippewa, Cottonwood, Freeborn, Jackson, Lac qui Parle, Le Sueur, Lyon, Martin, McLeod, Meeker, Mower, Nicollet, Nobles, Pipestone, Redwood, Renville, Rock, Sibley, Swift, Traverse, Waseca, Watonwan, Wilkin, Wright and Yellow Medicine.

Eco regions in which work will take place:

- Forest / Prairie Transition
- Prairie
- Metro / Urban
- Southeast Forest

Activity types:

- Protect in Easement
- Restore

Priority resources addressed by activity:

- Prairie

Narrative

Abstract

Utilizing the new CREP partnership to secure permanent conservation easements, this Phase VI continuation of the RIM Buffers Program will protect and restore riparian buffer areas, totaling ~~5 2,34 780~~ acres on approximately ~~332~~ 84 easements. This Program will continue to utilize a science-based ranking and selection process and be implemented locally, working with SWCD, NRCS, and FSA staff in the 54 county CREP area. It is estimated that \$1 of OHF will be leveraged with \$1 of Clean Water Funds and at least \$4 2 of Federal funds through CREP.

Design and Scope of Work

The project area will consist of the 54 County CREP area and the expected results are a total of ~~5 2,34 780~~ acres of expanded habitat buffers on approximately ~~332~~ 84 easements through this request. RIM Buffers uniquely leverages the Clean Water Fund with the Outdoor Heritage Fund to expand basic water quality buffers into high quality wildlife habitat. Outdoor Heritage Funds will double the size of Clean Water Fund (CWF) easements to provide additional wildlife benefits on areas that are not required by law or rule to have buffers, enhancing protection values from a water quality focus to a multi-benefit habitat-oriented corridor.

Due to the unique nature of the State's CWF/OHF match, each dollar of OHF is leveraged ~~5~~ 3:1, with ~~four~~ two Federal and one CWF dollar leveraged for each OHF dollar. OHF funded buffers, when linked to CWF buffers, will yield a total of ~~5~~ 2,31 780 acres of buffers. Due to guidance from LSOHC, only the acres (~~2~~ 1,655 390) and funding (\$6,708,000) from OHF have been displayed in the Output Tables.

Minnesota continues to see a net loss of grasslands and CRP acres each year. This exodus is being driven by high land prices, increased pressure for alternative uses, and declining federal budgets for conservation programs. Minnesota's primary strategy to mitigate the loss of CRP is to target expiring contracts for enrollment into Continuous CRP practices (like buffers) and permanent easements.

RIM Buffer easements will be secured via Conservation Reserve Enhancement Program (CREP) permanent easement acquisition, utilizing both a 15 year CRP contract and permanent RIM easement. This will be Minnesota's third CREP, and is able to offer a large-scale impact due to the unique opportunity to utilize a substantial federal match. Over the five year CREP period, we look to enroll permanently protected buffers using a combination of the USDA Conservation Reserve Program (CRP) and the Reinvest in Minnesota (RIM) Reserve Program.

RIM Buffers is a partnership delivered locally by Soil and Water Conservation Districts (SWCDs) and at the State level by BWSR. In addition, the CREP partnership is possible through collaboration among many local, state and federal partners including the USDA-Farm Service Agency (FSA), USDA-Natural Resources Conservation Service (NRCS), Pheasants Forever (PF), the Minnesota Department of Natural Resources (MNDNR), Minnesota Department of Agriculture (MDA), Minnesota Pollution Control Agency (MPCA), Minnesota Department of Health (MDH), and over 70 supporting organizations and agencies.

BWSR staff will coordinate with federal partners on the overall CREP process and program oversight and will be responsible for easement acquisition. Local staff will promote CRP contracts and RIM easements, assist with easement processing and provide key essential technical assistance and project management services. Due to the reliance on local staff for implementation, the Farm Bill Assistance Partnership (FBAP) is included as a component in the RIM Buffers Program. There is increased local workload expected with CREP signup and implementation, as a significantly increased number of easements will be secured within the CREP area throughout the CREP timeframe.

How does the request address MN habitats that have: historical value to fish and wildlife, wildlife species of greatest conservation need, MN County Biological Survey data, and/or rare, threatened and endangered species inventories?

Buffers are commonly viewed as simply a water quality practice, but buffers have notable positive impacts on wildlife due their unique upland and riverine habitat interaction. This is especially true for expanded width buffers

enrolled through this Program. Not only are upland grasslands protected or restored, detrimental impacts to stream-reliant biota is reduced. Many species of amphibians, such as southern MN's Northern Cricket Frog (endangered) rely on aquatic habitat during the breeding season and then spend most of their lives in upland habitat. In Southeastern MN, reptiles such as the Blanding's Turtle (endangered) rely on meandering streams, rivers, and adjacent lands.

The Sedge wren, a Species of Greatest Conservation Need (SGCN) most commonly associated with grassland habitat, is encountered in buffer areas. Bird use is influenced by buffer width, with greater widths experiencing greater abundance and diversity of birds and grassland species. However, bird use is negatively associated by the amount of edge exposure. As an effort to limit this exposure through this Program's scoring and ranking process, sites which may serve as corridors or expand current complexes are most desirable.

Diverse vegetation, access to a water resource, and protection from pesticides are important to Minnesota's native pollinator species. BWSR's native vegetation guidelines and pollinator initiative have outlined the RIM Program's commitment to protecting native pollinators. Targeted pollinator species include the Monarch Butterfly and solitary bee species including Leafcutter Bees, Mason Bees, and Yellow-faced Bees.

Of the nearly 1200 known wildlife species in Minnesota, 292 species, or approximately one-fourth, are at risk because they are rare; their populations are declining due to loss of habitat. SGCN in the RIM Buffers area include the Five-lined Skink, Two-spotted Skipper, Northern Pintail, American Black Duck, Grasshopper Sparrow, Upland Sandpiper, Sedge Wren, Dickcissel, and Western Grebe. In addition to the SGCN, the threatened or endangered species targeted in this proposal include the Dakota Skipper and Poweshiek Skipperling.

Describe the science based planning and evaluation model used:

Through a combination of targeted outreach, eligibility screening, and a scoring and ranking process, each site is considered on its benefits to the surrounding landscape, as well as the site-specific features which highlight the benefits of selection for permanent protection.

During the application process, a review of adjacent permanent habitat and easement size is conducted to indicate a site's usefulness as a corridor or extension to an existing habitat complex. In addition, other examples of the science-based targeting used include: drainage to shallow lakes, buffering along lakeshore, planned vegetative diversity, and proximity to land open to public hunting.

The Farm Service Agency and BWSR are currently formulating the signup criteria and scoring process, which will be finalized in the summer of 2016. However, with CREP we will utilize similar science-based considerations that

have been historically used by the RIM Buffers Program. The Site Evaluation Form from the most recent RIM Buffers signup has been attached to this proposal for reference.

Which two sections of the Minnesota Statewide Conservation and Preservation Plan are most applicable to this project?

- H2 Protect critical shoreland of streams and lakes
- H7 Keep water on the landscape

Which two other plans are addressed in this program?

- Long Range Plan for the Ring-Necked Pheasant in MN
- Outdoor Heritage Fund: A 25 Year Framework

Which LSOHC section priorities are addressed in this program?

Forest / Prairie Transition

- Protect, enhance, and restore wild rice wetlands, shallow lakes, wetland/grassland complexes, aspen parklands, and shoreland that provide critical habitat for game and nongame wildlife

Metro / Urban

- Protect habitat corridors, with emphasis on the Minnesota, Mississippi, and St. Croix rivers (bluff to floodplain)

Prairie

- Protect expiring CRP lands

Southeast Forest

- Protect, enhance, and restore habitat for fish, game, and nongame wildlife in rivers, cold-water streams, and associated upland habitat

Does this program include leveraged funding?

-

Non-OHF Appropriations

Year	Source	Amount
2011 to 2014	Clean Water Fund	\$10,059,000
2008, 2011, 2012 and 2014	Bonding	\$17,640,206

How will you sustain and/or maintain this work after the Outdoor Heritage Funds are expended?

Once a RIM easement is acquired, BWSR is responsible for maintenance, inspection and monitoring into perpetuity. The BWSR partners with local SWCDs to carry-out oversight, monitoring and inspection of its conservation easements. Easements are inspected for the first five consecutive years beginning in the year after the easement is recorded. Thereafter, on-site inspections are performed every three years and compliance checks are performed in the other two years. SWCDs report to BWSR on each site inspection conducted and partners' staff document findings. A non-compliance procedure is implemented when potential violations or problems are identified.

Perpetual monitoring and stewardship costs have been calculated at \$6,500 per easement. This value is based on using local SWCD staff for monitoring and landowner relations and existing enforcement authorities. The amount listed for Easement Stewardship covers costs of the SWCD regular monitoring, BWSR oversight, and enforcement.

Actions to Maintain Project Outcomes

Year	Source of Funds	Step 1	Step 2	Step 3
2017-Ongoing	Stewardship Account	Compliance Checks first 5 years then every 3rd year.	Corrective actions of any violations	Enforcement action taken by MN Attorney General office
2017-Ongoing	Landowner Obligation	Maintain compliance with easement terms	-	-

Activity Details

Requirements

If funded, this program will meet all applicable criteria set forth in MS 97A.056?

Yes

Is the land you plan to acquire (easement) free of any other permanent protection?

Yes

Will restoration and enhancement work follow best management practices including MS 84.973 Pollinator Habitat Program?

Yes

Is the restoration and enhancement activity on permanently protected land per 97A.056, Subd 13(f), tribal lands, and/or public waters per MS 103G.005, Subd. 15?

Yes

Where does the activity take place?

- Other : RIM Easements

Land Use

Will there be planting of any crop on OHF land purchased or restored in this program?

Yes

Explain what will be planted:

In certain circumstances food plots for wildlife are an allowable use on RIM easements and must be part of an approved Conservation Plan. Food plots on narrow buffers, steep slopes and wet areas are not allowed. RIM policy limits food plots to 10% of the total easement area or 5 acres whichever is smaller. There is no cost share for establishment of food plots and upon termination the landowners must reestablish the vegetation as prescribed in the Conservation Plan at their own expense. Food plots are a rarely selected option by landowners, to date only 2.2% of RIM easements have food plots.

Are any of the crop types planted GMO treated?

False

Will the eased land be open for public use?

No

Are there currently trails or roads on any of the proposed acquisitions?

Yes

Describe the types of trails or roads and the allowable uses:

This appropriation is funding a program that will have a parcel list identified at a later time. Roads or trails are typically excluded from the easement area if they serve no beneficial purpose to easement maintenance, monitoring, or enforcement. Existing trails and roads are identified during the easement acquisition process. Some roads and trails, such as agricultural field accesses, are allowed to remain.

Will the trails or roads remain and uses continue to be allowed after OHF acquisition?

Yes

How will maintenance and monitoring be accomplished?

The easements secured under this project will be managed as part of the MN Board of Water and Soil Resources (BWSR) RIM Reserve program that has over 6,000 easements currently in place. Easements are monitored annually for each of the first 5 years and then every 3rd year after that. BWSR, in cooperation with Soil and Water Conservation Districts (SWCD), implement a stewardship process to track, monitor quality and assure compliance with easement terms.

Under the terms of the Reinvest In Minnesota (RIM) easement program, landowners are required to maintain compliance with the easement. A conservation plan is developed with the landowner and maintained as part of each easement. Basic easement compliance costs are borne by the landowner, periodic enhancements may be cost shared from a variety of sources.

Will new trails or roads be developed or improved as a result of the OHF acquisition?

Yes

Describe the types of trails or roads and the allowable uses:

Though uncommon, there could be a potential for new trails to be developed, if they contribute to easement maintenance or benefit the easement site (e.g. firebreaks, berm maintenance, etc). Unauthorized trails identified during the monitoring process are in violation of the easement.

How will maintenance and monitoring be accomplished?

The easements secured under this project will be managed as part of the MN Board of Water and Soil Resources (BWSR) RIM Reserve program that has over 6,000 easements currently in place. Easements are monitored annually for each of the first 5 years and then every 3rd year after that. BWSR, in cooperation with Soil and Water Conservation Districts (SWCD), implement a stewardship process to track, monitor quality and assure compliance with easement terms.

Under the terms of the Reinvest In Minnesota (RIM) easement program, landowners are required to maintain compliance with the easement. A conservation plan is developed with the landowner and maintained as part of each easement. Basic easement compliance costs are borne by the landowner, periodic enhancements may be cost shared from a variety of sources.

Timeline

Activity Name	Estimated Completion Date
Obtain applications from eligible landowners	June 30, 2017 <u>June 30, 2022</u>
Allocations to specific parcels made	July 30, 2017 <u>July 31, 2022</u>
Easements recorded	June 30, 2019 <u>June 30, 2024</u>
Restorations completed and final report submitted	November 1, 2021 <u>June 30, 2025</u>
Restorations completed	

Date of Final Report Submission: 11/01/2024 5

Budget

Budget reallocations up to 10% do not require an amendment to the Accomplishment Plan.

Totals

Item	Funding Request	Antic. Leverage	Leverage Source	Total
Personnel	\$568,800 <u>\$267,000</u>	\$568,800 <u>\$267,000</u>	Clean Water Fund, Clean Water Fund, Clean Water Fund	\$1,137,600 <u>\$534,000</u>
Contracts	\$514,500 <u>\$257,400</u>	\$514,500 <u>\$257,400</u>	Clean Water Fund	\$1,029,000 <u>\$514,800</u>
Fee Acquisition w/ PILT	-	-	-	-
Fee Acquisition w/o PILT	-	-	-	-
Easement Acquisition	\$4,438,400 \$5,803,300	\$31,270,400 \$17,758,100	Clean Water Fund, USDA-FSA-CRP	\$35,708,800 \$23,561,400
Easement Stewardship	\$1,079,000 <u>\$273,000</u>	\$1,079,000 <u>\$273,000</u>	Clean Water Fund	\$2,158,000 <u>\$546,000</u>
Travel	\$11,800	\$11,800	Clean Water Fund	\$23,600
Professional Services	-	-	-	-
Direct Support Services	\$73,800	\$73,800	Clean Water Fund	\$147,600
DNR Land Acquisition Costs	-	-	-	-
Capital Equipment	-	-	-	-
Other Equipment/Tools	\$16,700	\$16,700	Clean Water Fund	\$33,400
Supplies/Materials	\$5,000	\$5,000	Clean Water Fund	\$10,000
DNR IDP	-	\$13,400	Clean Water Fund	\$13,400
Grand Total	\$6,708,000	\$33,553,400 <u>\$18,676,200</u>	-	\$40,261,400 <u>\$25,384,200</u>

Personnel

Position	Annual FTE	Years Working	Funding Request	Antic. Leverage	Leverage Source	Total
Program Management Staff	0.25 <u>4.51</u>	5.0	\$68,800 <u>\$251,400</u>	\$68,800 <u>\$251,400</u>	Clean Water Fund	\$137,600 <u>\$502,800</u>
Easement Engineering/Eco Service Processing	4.26 <u>0.35</u>	3.0	\$446,900 <u>\$15,600</u>	\$446,900 <u>\$15,600</u>	Clean Water Fund	\$893,800 <u>\$31,200</u>
Engineering/Eco Services	0.35	3.0	\$53,100	\$53,100	Clean Water Fund	\$106,200

Amount of Request: \$6,708,000

Amount of Leverage: ~~\$33,553,400~~ \$18,676,200

Leverage as a percent of the Request: ~~500.2%~~ 278.42%

DSS + Personnel: ~~\$642,600~~ \$340,800

As a % of the total request: ~~9.58%~~ 5.08%

Easement Stewardship: ~~\$1,079,000~~ \$273,000

As a % of the Easement Acquisition: ~~24.31%~~ 4.7%

How will this program accommodate the reduced appropriation recommendation from the original proposed requested amount?

The acreage and number of easements enrolled as well as budget items have been adjusted downward proportionately to the awarded amount.

Direct Support Services

How did you determine which portions of the Direct Support Services of your shared support services is direct to this program?

BWSR calculates direct support services costs that are directly related to and necessary for each request based on the type of work being done.

Federal Funds

Do you anticipate federal funds as a match for this program?

Yes

Are the funds confirmed?

Yes

Is Confirmation Document attached?

[Yes](#)

- ~~Cash : \$26,832,000~~ Cash : \$11,954,800

Output Tables

Acres by Resource Type (Table 1)

Type	Wetland	Prairie	Forest	Habitat	Total Acres
Restore	0	0	0	0	0
Protect in Fee with State PILT Liability	0	0	0	0	0
Protect in Fee w/o State PILT Liability	0	0	0	0	0
Protect in Easement	0	2,655 1,390	0	0	2,655 1,390
Enhance	0	0	0	0	0
Total	0	2,655 1,390	0	0	2,655 1,390

Total Requested Funding by Resource Type (Table 2)

Type	Wetland	Prairie	Forest	Habitat	Total Funding
Restore	-	\$531,000 -	-	-	\$531,000 -
Protect in Fee with State PILT Liability	-	-	-	-	-
Protect in Fee w/o State PILT Liability	-	-	-	-	-
Protect in Easement	-	\$6,177,000 \$6,708,000	-	-	\$6,177,000 \$6,708,000
Enhance	-	-	-	-	-
Total	-	\$6,708,000	-	-	\$6,708,000

Acres within each Ecological Section (Table 3)

Type	Metro/Urban	Forest/Prairie	SE Forest	Prairie	N. Forest	Total Acres
Restore	0	0	0	0	0	0
Protect in Fee with State PILT Liability	0	0	0	0	0	0
Protect in Fee w/o State PILT Liability	0	0	0	0	0	0
Protect in Easement	266 139	266 139	266 139	1,857 973	0	2,655 1,390
Enhance	0	0	0	0	0	0
Total	266 139	266 139	266 139	1,857 973	0	2,655 1,390

Total Requested Funding within each Ecological Section (Table 4)

Type	Metro/Urban	Forest/Prairie	SE Forest	Prairie	N. Forest	Total Funding
Restore	\$53,100 -	\$53,100 -	\$53,100 -	\$371,700 -	-	\$531,000 -
Protect in Fee with State PILT Liability	-	-	-	-	-	-
Protect in Fee w/o State PILT Liability	-	-	-	-	-	-
Protect in Easement	\$617,700 \$670,800	\$617,700 \$670,800	\$617,700 \$670,800	\$4,323,900 \$4,695,600	-	\$6,177,000 \$6,708,000
Enhance	-	-	-	-	-	-
Total	\$670,800	\$670,800	\$670,800	\$4,695,600	-	\$6,708,000

Average Cost per Acre by Resource Type (Table 5)

Type	Wetland	Prairie	Forest	Habitat
Restore	-	-	-	-
Protect in Fee with State PILT Liability	-	-	-	-
Protect in Fee w/o State PILT Liability	-	-	-	-
Protect in Easement	-	\$2,326 \$4,825	-	-
Enhance	-	-	-	-

Average Cost per Acre by Ecological Section (Table 6)

Type	Metro/Urban	Forest/Prairie	SE Forest	Prairie	N. Forest
Restore	-	-	-	-	-
Protect in Fee with State	-	-	-	-	-

PILT Liability					
Protect in Fee w/o State PILT Liability	-	-	-	-	-
Protect in Easement	<u>\$2,322 \$4,825</u>	<u>\$2,322 \$4,825</u>	<u>\$2,322 \$4,825</u>	<u>\$2,328 \$4,825</u>	-
Enhance	-	-	-	-	-

Target Lake/Stream/River Feet or Miles

50 Miles

Outcomes

Programs in forest-prairie transition region:

- Protected, restored, and enhanced aspen parklands and riparian areas ~ *Riparian corridors are a key link in connecting existing core habitat parcels. Parcels will be scored using the eligibility score sheet for wildlife benefits and also incorporating water quality benefits. Permanently protecting expiring CRP lands, enhancing habitat for wildlife and other species, keeping and filtering water on the land and protecting, enhancing and restoring habitats for at risk species will all be benefits of this effort.*

Programs in metropolitan urbanizing region:

- A network of natural land and riparian habitats will connect corridors for wildlife and species in greatest conservation need ~ *Riparian corridors are a key link in connecting existing core habitat parcels. Parcels will be scored using the eligibility score sheet for wildlife benefits and also incorporating water quality benefits. Permanently protecting expiring CRP lands, enhancing habitat for wildlife and other species, keeping and filtering water on the land and protecting, enhancing and restoring habitats for at risk species will all be benefits of this effort.*

Programs in prairie region:

- Expiring CRP lands are permanently protected ~ *Riparian corridors are a key link in connecting existing core habitat parcels. Parcels will be scored using the eligibility score sheet for wildlife benefits and also incorporating water quality benefits. Permanently protecting expiring CRP lands, enhancing habitat for wildlife and other species, keeping and filtering water on the land and protecting, enhancing and restoring habitats for at risk species will all be benefits of this effort.*

Programs in prairie region:

- Rivers, streams, and surrounding vegetation provide corridors of habitat ~ *Riparian corridors are a key link in connecting existing core habitat parcels. Parcels will be scored using the eligibility score sheet for wildlife benefits and also incorporating water quality benefits. Permanently protecting expiring CRP lands, enhancing habitat for wildlife and other species, keeping and filtering water on the land and protecting, enhancing and restoring habitats for at risk species will all be benefits of this effort.*

Parcels

For restoration and enhancement programs ONLY: Managers may add, delete, and substitute projects on this parcel list based upon need, readiness, cost, opportunity, and/or urgency so long as the substitute parcel/project forwards the constitutional objectives of this program in the Project Scope table of this accomplishment plan. The final accomplishment plan report will include the final parcel list.

Sign-up Criteria?

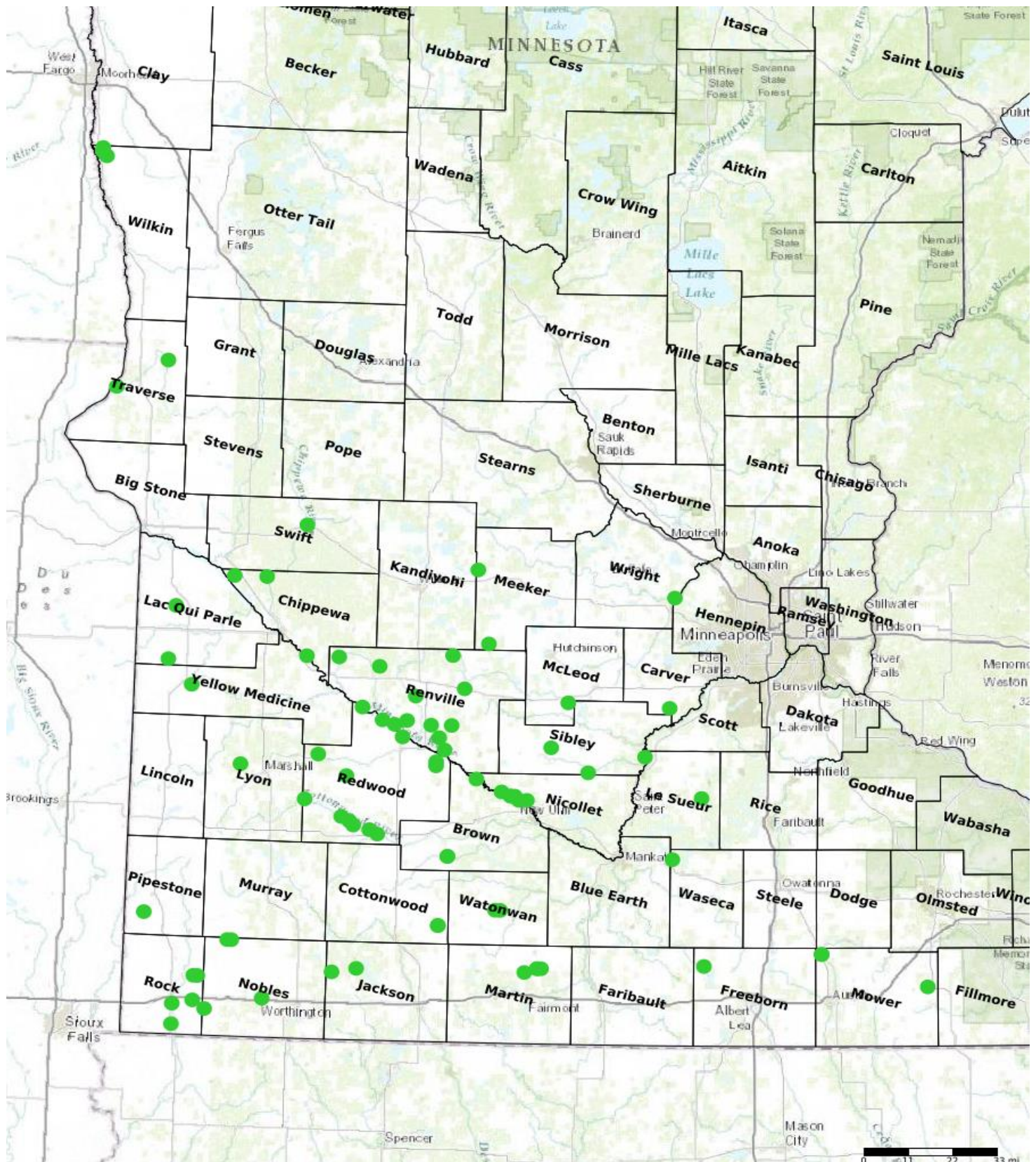
[Yes](#)

Explain the process used to identify, prioritize, and select the parcels on your list:

Protect Parcels

Name	County	TRDS	Acres	Est Cost	Existing Protection
08-05-18-01--	Brown	10834213	4 <u>2</u>	\$14,500 <u>\$7,200</u>	No
08-06-18-01--	Brown	10834213	12 <u>6</u>	\$47,300 <u>\$23,700</u>	No
10-01-19-01--	Carver	11425212	9 <u>4</u>	<u>\$15,400</u>	No
<u>12-01-20-01--</u>	<u>Chippewa</u>	<u>11942207</u>	<u>75</u>	<u>\$168,100</u>	<u>No</u>
12-02-19-01--	Chippewa	11941209	17 <u>9</u>	<u>\$15,000</u>	No
12-03-19-01--	Chippewa	11639218	42 <u>20</u>	<u>\$55,200</u>	No
17-06-19-01--	Cottonwood	10534210	5 <u>3</u>	<u>\$13,500</u>	No
17-08-19-01--	Cottonwood	10534210	38 <u>19</u>	<u>\$97,300</u>	No
24-07-18-01--	Freeborn	10423228	8 <u>4</u>	<u>\$10,600</u>	No
32-02-18-01--	Jackson	10338208	7 <u>4</u>	\$31,700 <u>\$15,900</u>	No
32-07-19-01--	Jackson	10337205	23 <u>12</u>	<u>\$47,100</u>	No
37-01-18-01--	Lac qui Parle	11645228	112 <u>56</u>	\$120,100 <u>\$60,000</u>	No
37-02-18-01--	Lac qui Parle	11845223	76 <u>38</u>	<u>\$66,100</u>	No
40-02-18-01--	Le Sueur	11123232	4 <u>2</u>	\$9,000 <u>\$4,500</u>	No
42-01-18-01--	Lyon	11242233	9 <u>5</u>	<u>\$19,600</u>	No
46-09-19-01--	Martin	10330206	31 <u>16</u>	<u>\$51,400</u>	No
46-14-19-01--	Martin	10430234	58 <u>29</u>	<u>\$94,800</u>	No
46-15-19-01--	Martin	10430235	84 <u>42</u>	<u>\$137,500</u>	No
46-16-19-01--	Martin	10430234	12 <u>6</u>	<u>\$21,100</u>	No
43-01-19-01--	McLeod	11429202	10 <u>5</u>	<u>\$10,600</u>	No
47-05-19-01--	Meeker	11732227	22 <u>11</u>	<u>\$65,100</u>	No
47-06-18-01--	Meeker	12032230	7 <u>3</u>	<u>\$3,800</u>	No
50-01-18-01--	Mower	10418208	24 <u>12</u>	<u>\$29,100</u>	No
50-02-18-01--	Mower	10418208	20 <u>10</u>	<u>\$24,900</u>	No
50-03-18-01--	Mower	10314222	16 <u>8</u>	<u>\$27,100</u>	No
52-02-18-01--	Nicollet	11131234	16 <u>8</u>	<u>\$31,900</u>	No
52-03-18-01--	Nicollet	11131230	9 <u>4</u>	<u>\$17,400</u>	No
52-03-19-01--	Nicollet	11131233	2 <u>1</u>	<u>\$3,600</u>	No
52-04-18-01--	Nicollet	11030206	26 <u>13</u>	<u>\$48,000</u>	No
52-04-19-01--	Nicollet	11031202	97 <u>48</u>	<u>\$239,900</u>	No
52-05-19-01--	Nicollet	11131233	11 <u>5</u>	<u>\$23,100</u>	No
52-07-19-01--	Nicollet	11132207	74 <u>37</u>	\$257,300 <u>\$128,700</u>	No
53-02-19-01--	Nobles	10241216	10 <u>5</u>	<u>\$23,000</u>	No
53-03-19-01--	Nobles	10442206	45 <u>22</u>	<u>\$99,300</u>	No
53-05-19-01--	Nobles	10443201	2 <u>1</u>	<u>\$2,800</u>	No

53-06-19-01--	Nobles	10243231	81 40	<u>\$174,300</u>	No
59-01-18-01--	Pipestone	10546203	6 3	\$24,800 <u>\$12,400</u>	No
64-07-19-01--	Redwood	11436232	25 12	<u>\$21,600</u>	No
64-08-18-01--	Redwood	11234228	12 6	\$44,500 <u>\$22,300</u>	No
64-09-18-01--	Redwood	11234221	4 2	\$13,700 <u>\$6,900</u>	No
64-11-18-01--	Redwood	11039207	125 63	<u>\$203,100</u>	No
64-12-19-01--	Redwood	10936219	39 20	<u>\$80,700</u>	No
64-14-19-01--	Redwood	10937207	35 17	<u>\$65,900</u>	No
64-15-19-01--	Redwood	11239215	152 77	<u>\$344,400</u>	No
64-16-18-01--	Redwood	10938201	5 3	\$19,200 <u>\$9,600</u>	No
64-16-19-01--	Redwood	10937214	25 12	<u>\$53,800</u>	No
64-18-18-01--	Redwood	11138211	5 3	<u>\$8,300</u>	No
64-20-18-01--	Redwood	11038234	6 3	\$32,200 <u>\$16,100</u>	No
65-06-18-01--	Renville	11633207	5 3	\$10,700 <u>\$5,400</u>	No
65-06-19-01--	Renville	11335219	43 21	<u>\$55,900</u>	No
65-06-20-01--	Renville	11234202	1 5	<u>\$16,400</u>	No
65-08-18-01--	Renville	11636230	6 3	<u>\$9,800</u>	No
65-08-19-01--	Renville	11535234	12 6	<u>\$21,800</u>	No
65-09-19-01--	Renville	11336202	57 29	<u>\$110,300</u>	No
65-12-18-01--	Renville	11435232	2 1	\$6,900 <u>\$3,400</u>	No
65-15-18-01--	Renville	11533222	1	<u>\$2,900</u>	No
65-16-18-01--	Renville	11334222	16 8	<u>\$34,600</u>	No
65-17-18-01--	Renville	11334205	9 5	<u>\$17,800</u>	No
65-18-18-01--	Renville	11333206	7 3	<u>\$10,500</u>	No
65-24-18-01--	Renville	11638216	26 13	<u>\$26,800</u>	No
65-28-18-01--	Renville	11437216	71 36	<u>\$142,000</u>	No
67-02-18-01--	Rock	10344222	101 51	<u>\$143,500</u>	No
67-02-19-01--	Rock	10244222	78 39	<u>\$248,200</u>	No
67-03-18-01--	Rock	10245226	99 49	<u>\$311,100</u>	No
67-05-19-01--	Rock	10344223	182 91	<u>\$253,100</u>	No
67-09-19-01--	Rock	10145223	55 28	<u>\$208,000</u>	No
72-02-18-01--	Sibley	11329231	8 4	<u>\$11,400</u>	No
72-05-18-01--	Sibley	11228234	10 5	<u>\$13,300</u>	No
72-06-19-01--	Sibley	11226212	5 2	<u>\$4,400</u>	No
76-03-18-01--	Swift	12139206	18 9	<u>\$30,000</u>	No
78-01-18-01--	Traverse	12845220	18 9	\$46,178 <u>\$23,100</u>	No
78-02-19-01--	Traverse	12747229	39 20	\$156,539 <u>\$63,900</u>	No
81-02-19-01--	Waseca	10824218	17 8	<u>\$28,600</u>	No
83-02-19-01--	Watonswan	10632224	30 15	<u>\$51,600</u>	No
83-08-19-01--	Watonswan	10631219	37 19	<u>\$58,700</u>	No
84-08-18-01--	Wilkin	13648215	25 12	<u>\$29,800</u>	No
84-09-19-01--	Wilkin	13648204	7 3	<u>\$8,100</u>	No
84-10-19-01--	Wilkin	13648209	19 9	<u>\$21,900</u>	No
86-01-18-01--	Wright	11924230	3 1	\$13,400 <u>\$6,700</u>	No
87-06-18-01--	Yellow Medicine	11544228	18 9	<u>\$18,000</u>	No
46-12-19-01--	Martin	10331227	43	-	No
50-02-19-01--	Mower	10118230	13	-	No
84-11-19-01--	Wilkin	13648209	17	-	No



- Protect in Easement
- ▲ Protect in Fee with PILT
- Protect in Fee W/O PILT
- ★ Restore
- ✕ Enhance
- ⊕ Other

Parcel Map

RIM Buffers for Wildlife and Water - Phase VI (Data Generated From Parcel List)