

Accelerating the Waterfowl Production

Area Program Phase XIV: WA01



Funds Requested

\$11,929,000

Non-State Match

\$8,045,000

Protect and Restore

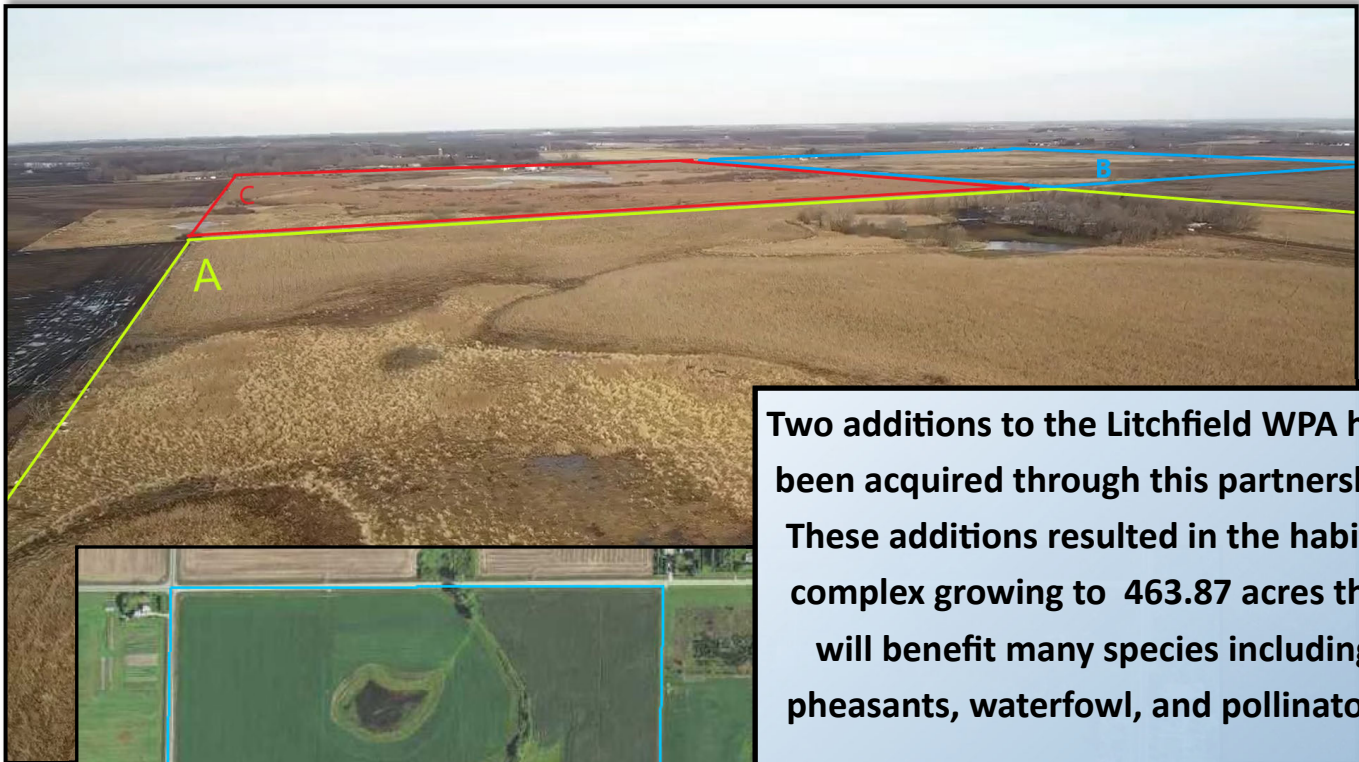
2000 acres



Funding Phase Year	OHF Funding	OHF Spent	Balance	Match Proposed	PF Match Spent	USFWS Match Spent	Closed	Acres Proposed	Acres Acquired
Phase 1 (ML 2009)	\$5,600,000	\$5,581,344	\$18,656	\$5,320,000	\$438,405	\$5,284,370	12	1,200	1,522
Phase 2 (ML 2010)	\$3,505,000	\$3,495,730	\$9,270	\$2,700,000	\$401,492	\$2,839,836	11	700	1,397
Phase 3 (ML 2011)	\$9,815,000	\$9,715,133	\$99,867	\$5,125,000	\$347,509	\$5,010,137	18	2,250	2,267
Phase 4 (ML 2012)	\$5,400,000	\$5,338,182	\$61,818	\$3,320,000	\$447,477	\$3,341,369	5	935	1,001
Phase 5 (ML 2013)	\$6,830,000	\$6,722,533	\$107,467	\$3,415,000	\$397,568	\$3,415,730	14	1,230	1,240
Phase 6 (ML 2014)	\$7,280,000	\$6,332,761	\$947,239	\$2,688,000	\$790,034	\$2,883,850	8	887	1554
Phase 7 (ML 2015)	\$7,620,000	\$7,603,017	\$16,983	\$4,046,000	\$529,879	\$4,468,450	12	900	1,506
Phase 8 (ML 2016)	\$5,650,000	\$5,615,648	\$34,352	\$5,100,000	\$543,316	\$5,236,375	8	760	1,062
Phase 9 (ML 2017)	\$5,500,000	\$5,292,481	\$207,519	\$4,200,000	\$619,044	\$5,676,122	11	1,000	1,310
Phase 10 (ML 2018)	\$5,061,000	\$4,697,653	\$363,347	\$1,500,400	\$401,861	\$1,616,282	10	915	1,150
Phase 11 (ML 2019)	\$5,631,000	\$4,277,300	\$1,353,700	\$1,650,400	\$179,145	\$3,980,150	9	1,003	1,240
Phase 12 (ML 2020)	\$3,658,000	\$1,023,815	\$2,634,185	\$857,000	\$25,468	\$3,456,875	2	611	160
Totals	\$71,550,000	\$65,695,597	\$5,854,403	\$39,921,800	\$5,121,198	\$47,209,546	120	12,391	15,409

Litchfield Waterfowl Production Area Habitat Complex

Meeker County



Two additions to the Litchfield WPA have been acquired through this partnership. These additions resulted in the habitat complex growing to 463.87 acres that will benefit many species including pheasants, waterfowl, and pollinators. Additionally, this WPA adds public access opportunities for nearby cities including; Willmar, St. Cloud, and Hutchinson.

