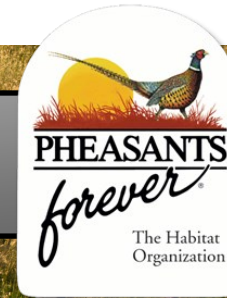


Accelerating the Wildlife Management Area Program Phase XIV: PA01



Funds Requested

\$13,852,300

Non-State Match

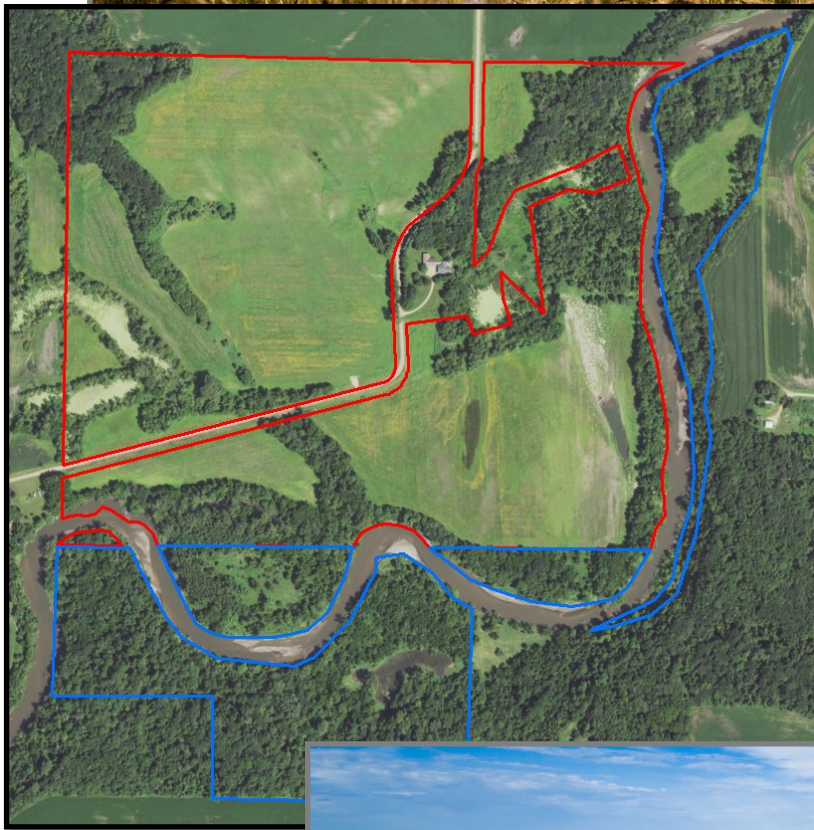
\$2,950,000

Protect and Restore

2,290 acres

| Funding Phase Year | OHF Funding | OHF Spent | Balance | Match Proposed | Match Spent | Closed | Acres Proposed | Acres Acquired |
|--------------------|--------------|--------------|-------------|----------------|--------------|--------|----------------|----------------|
| Phase 1 (ML 2009) | \$3,000,000 | \$2,969,680 | \$30,320 | \$725,000 | \$862,492 | 5 | 1,051 | 1,051 |
| Phase 2 (ML 2010) | \$3,015,000 | \$3,014,821 | \$179 | \$525,000 | \$501,000 | 9 | 900 | 1,020 |
| Phase 3 (ML 2011) | \$5,500,000 | \$5,439,768 | \$60,232 | \$607,000 | \$684,867 | 11 | 1,275 | 1,498 |
| Phase 4 (ML 2012) | \$3,300,000 | \$3,237,672 | \$62,328 | \$330,000 | \$534,136 | 7 | 550 | 638 |
| Phase 5 (ML 2013) | \$7,960,000 | \$7,907,201 | \$52,799 | \$398,000 | \$550,369 | 11 | 1,220 | 1,484 |
| Phase 6 (ML 2014) | \$10,350,000 | \$10,143,890 | \$206,110 | \$342,000 | \$1,329,604 | 16 | 1,362 | 1,803 |
| Phase 7 (ML 2015) | \$7,452,000 | \$7,421,373 | \$30,627 | \$300,000 | \$1,518,491 | 16 | 900 | 2,100 |
| Phase 8 (ML 2016) | \$5,229,000 | \$5,150,814 | \$78,186 | \$196,800 | \$1,442,625 | 5 | 680 | 1,102 |
| Phase 9 (ML 2017) | \$5,603,000 | \$5,579,334 | \$23,666 | \$297,900 | \$923,947 | 9 | 1,012 | 1,182 |
| Phase 10 (ML2018) | \$5,740,000 | \$5,385,933 | \$354,067 | \$412,000 | \$1,393,765 | 8 | 1,030 | 1,254 |
| Phase 11 (ML2019) | \$6,060,000 | \$3,846,543 | \$2,213,457 | \$215,000 | \$1,772,901 | 9 | 1,073 | 1,150 |
| Phase 12 (ML2020) | \$3,322,000 | \$250,975 | \$3,071,025 | \$195,000 | \$2,170 | 1 | 540 | 38 |
| Totals | \$66,531,000 | \$60,348,004 | \$6,182,996 | \$4,543,700 | \$11,516,367 | 107 | 11,593 | 14,320 |

Gary Clancy Wildlife Management Area



The Gary Clancy WMA (Red) in Blue Earth County is 177.3 acres, including more than 3,800 ft. of shoreline on the Watonwan River, restored highly erodible croplands, and drained wetlands. The acquisition of this property provides, wildlife habitat, water quality improvements, as well as public access to land locked county owned land (blue).

