

ST. LOUIS RIVER RESTORATION INITIATIVE

PHASE 9 PROPOSAL

HRE05

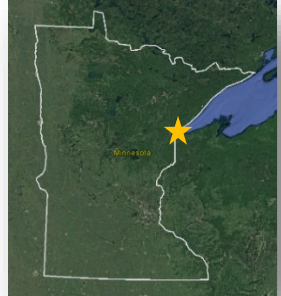


DEPARTMENT OF
NATURAL RESOURCES



The St. Louis River Estuary: a unique & valuable state resource

- 12,000 acre coastal marsh
- 43 species of native fish
- 159 species of birds
- 43 Species of Greatest Conservation Need



St. Louis River coastal marsh habitat

- Ranked S1 = Critically imperiled
- 24 times more productive than open water
- Nurseries for Lake Superior fish populations
- Diverse native plants and wildlife
- Important migratory waterfowl flyway



Restoration to Revitalization: A Success Story

Native Brook Trout in restored
Knowlton Creek
A Muskie 'hot spot' at
Radio Tower Bay
Spawning Lake Sturgeon at
Chambers Grove



Chambers Grove:
Hardened shoreline (before)



Chambers Grove:
Natural shoreline (after)



More people are using the river than ever before!

Making progress in 2021

Increasing and protecting Common Tern habitat at **Interstate Island**



Designing for improved fish habitat at **Perch Lake**



Restoring Coastal Marsh habitat at **Grassy Point & Kingsbury Bay**



Fond du Lac Band seeding **manomin** (wild rice)



Each **\$1.00** awarded by OHF leveraged **\$1.68** in Federal/other support for these projects.

St. Louis River Restoration Phase 9 Proposal

160 Acres

Coastal Marsh Habitat Restoration

- Mud and Perch Lakes
- Area of Concern Management Actions
- Waterfowl hotspot
- Panfish production area
- Northern Pike/Muskie spawning



50 Acres

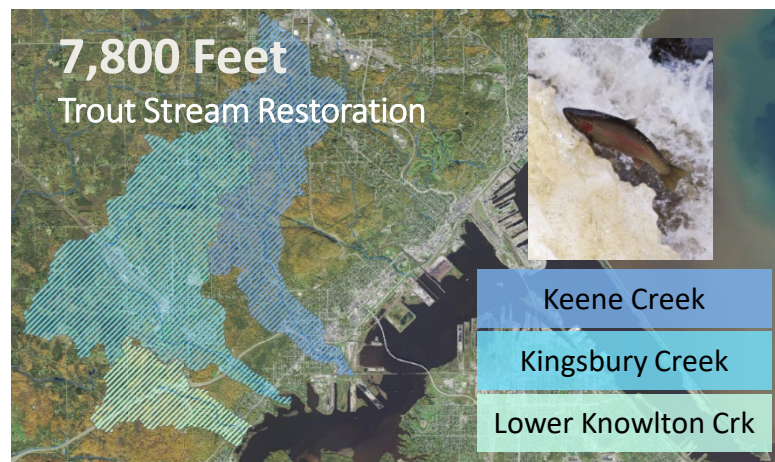
Wetland Habitat Restoration

- Ash replacement planting
- Hemi-marsh restoration
- Phragmites control
- Long-lived conifer seeding

Let's maintain this momentum!



7,800 Feet
Trout Stream Restoration



Keene Creek

Kingsbury Creek

Lower Knowlton Crk



- Breeding marshbirds
- Migratory waterfowl
- Wading Birds
- Landbirds

The St. Louis River Restoration Initiative has:

- Strong partnerships
- Demonstrated success
- Engaged community
- A clear vision for **restoration, enhancement, and protection**