

# Protection Summary FA03 - Camp Ripley Sentinel Landscape ACUB, Phase X

**Pre-ACUB: 33.8%**

Total Protected (5-mile):  
**85,382 acres**

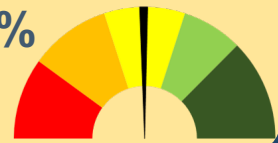


5-mile Work Area: 252,637 acres

Protected Lands = Public/NGO, SFIA,  
Easements, Wetlands and Lakes/Rivers

**Current: 50.0%**

Total Protected (5-mile):  
**126,351 acres**

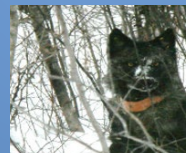


**FACT:** Forestland makes up 35.5% of the larger CRSL with only 0.5% of those forests being located on public lands. Easements and private land restorations are critical in protecting the larger percentage of the landscapes forested habitat.

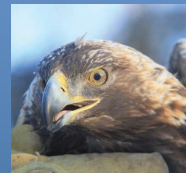
**End-State Protection Goal (5-mile): 65% (164,215 acres) accomplished via easements (Federal & LSOHC), fee title (partner's work) and SFIA.**

Working with willing private landowners will provide:

- **PERMANENT PROTECTION** of habitat corridors and buffers around public lands
- **PRESERVED** open space within the CRSL
- **PRACTICES** that protect soil & water quality and habitat corridor connectivity via conservation enhancement and restoration efforts



Gray wolf



Golden eagle



Blanding's turtle

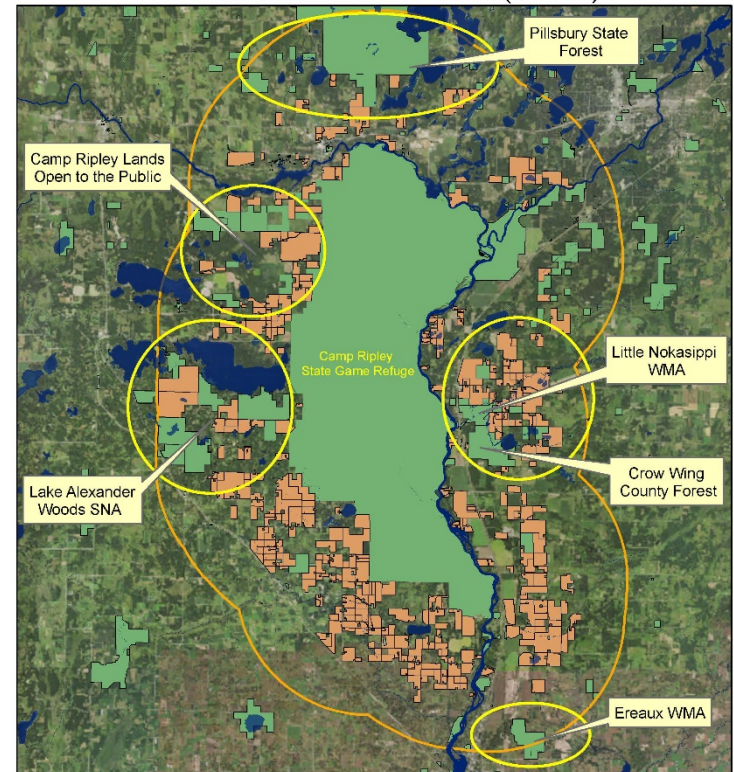
Lesser Quality    Base    Greater Quality



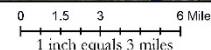
Habitat Quality Meter

- High terrestrial biodiversity
- High Wildlife Action Network score
- Wild rice lakes
- Trout streams
- Stream confluences
- Lakes of high/outstanding biodiversity
- High fisheries habitat

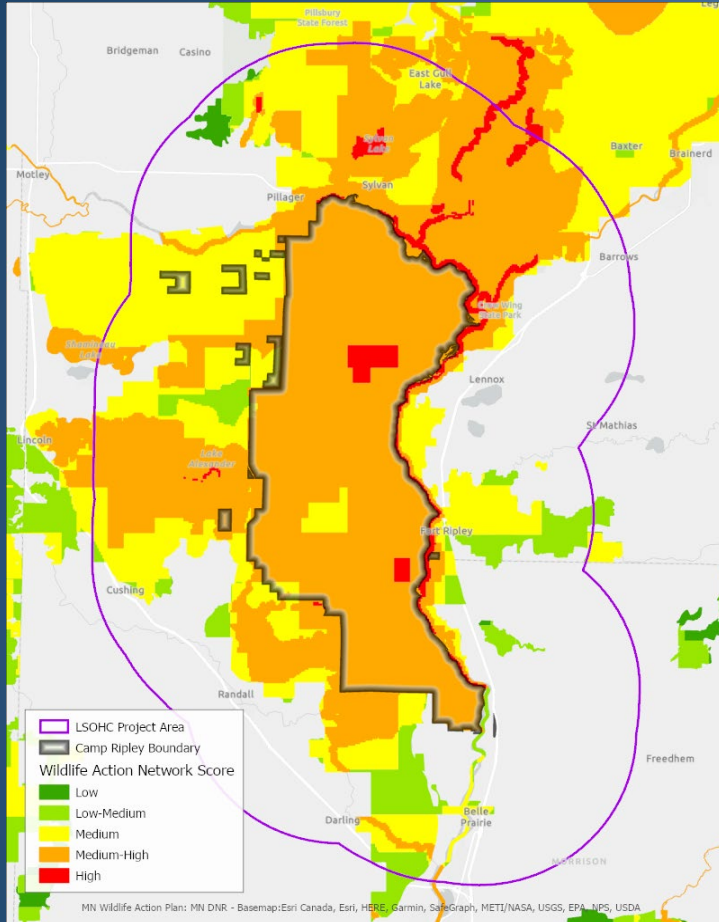
## Public Lands Protection - Creating and Enhancing Wildlife Corridors Within the CRSL (LSOHC)



■ Public Lands (State/County)  
  Prioritized & Targeted Areas to Buffer  
 Protected Lands Completed Easements  
  5-Mile Boundary



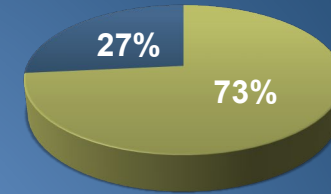
# Protection Summary FA03 - Camp Ripley Sentinel Landscape ACUB, Phase X



Pictured above is the DNR Wildlife Action Network score for this project boundary. Within these targeted high priority lands, this project will:

- Secure approximately 56 RIM easements
- Protect 5,000 acres of high quality habitat
- Buffer rivers, lakes, and public lands
- Prevent habitat fragmentation
- Provide a large network of habitat continuity that benefit species requiring large un-fragmented landscapes

## Camp Ripley Sentinel Landscape ACUB Funding Summary



■ Federal Leveraged Funds     ■ LSOHC Funds  
 \$43,480,810                                     \$15,705,000

- The Minnesota National Guard competes for Federal funding to acquire RIM conservation easements that prevent incompatible development
- Funding from LSOHC is critical in leveraging access to these competitive Federal funds
- Federal ACUB funding has provided approximately 73% of the total ACUB funding

### Camp Ripley Public Hunting & Fishing Opportunities (Average)

Turkey Hunts	Permits	Hunters
<b>Disabled veteran</b>	36	32
<b>Service members</b>	81	49
<b>White-tailed Deer Hunts</b>		
<b>Disabled veteran</b>	48	45
<b>Public</b>	4,216	3,399
<b>Service members archery</b>	122	69
<b>Service members muzzleloader</b>	71	51
<b>Youth</b>	160	110

#### Public Hunting Opportunities Outside the Fence:

Camp Ripley, TNC & City of Baxter lands outside the fence allow for open to the public hunting/recreation opportunities on nearly 4,575 acres of land.