



# Metro Big Rivers Habitat Partnership

Presentation to LSOHC

November 19, 2020



## Metro Big Rivers Partnership

Established after passage of the Legacy Amendment. We are 5 conservation nonprofits working together:

- Friends of the Mississippi River
- Great River Greening
- Minnesota Land Trust
- Minnesota Valley Trust
- The Trust for Public Land

THE  
TRUST  
FOR  
PUBLIC  
LAND





## Our Objectives & How We Work

We pursue and achieve goals for the metro urbanizing area as delineated in:

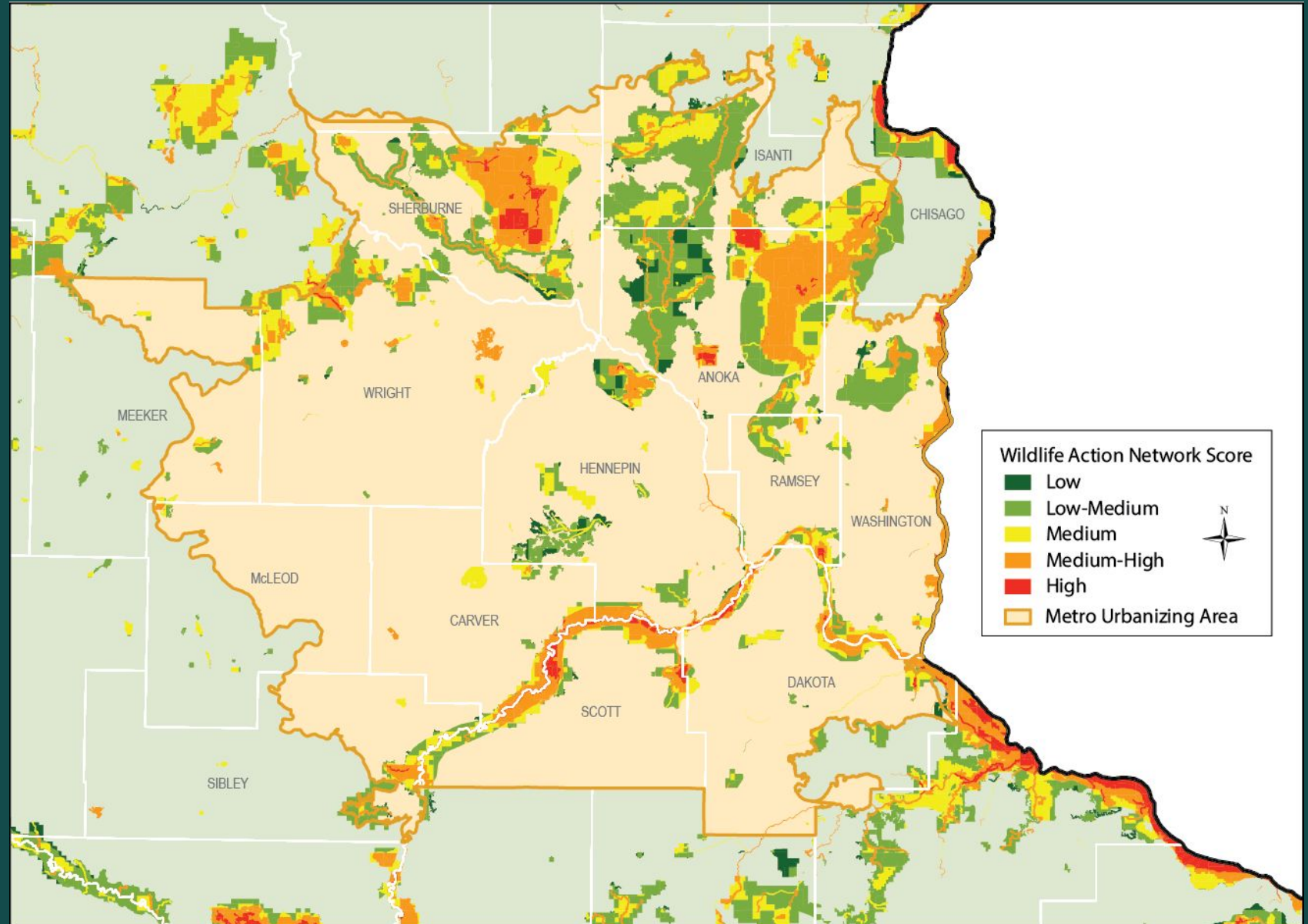
- LSOHC 25 Year Framework
- State Wildlife Action Plan
- Other federal, state and local plans.

We ramped up our organizational capacities to accelerate metro habitat work for the OHF.

We partner with local, state and federal entities.



# Wildlife Habitat in the Metropolitan Urbanizing Area





Youth connect with nature at Trout Brook Nature Sanctuary, a Metro Big Rivers site in St. Paul.

## Minnesotans of the Metropolitan Urbanizing Area

OHF investment in the metro area benefits > 60% of Minnesotans.





Outdoor recreation at Houlton Conservation Area, a Metro Big Rivers site in Sherburne County.





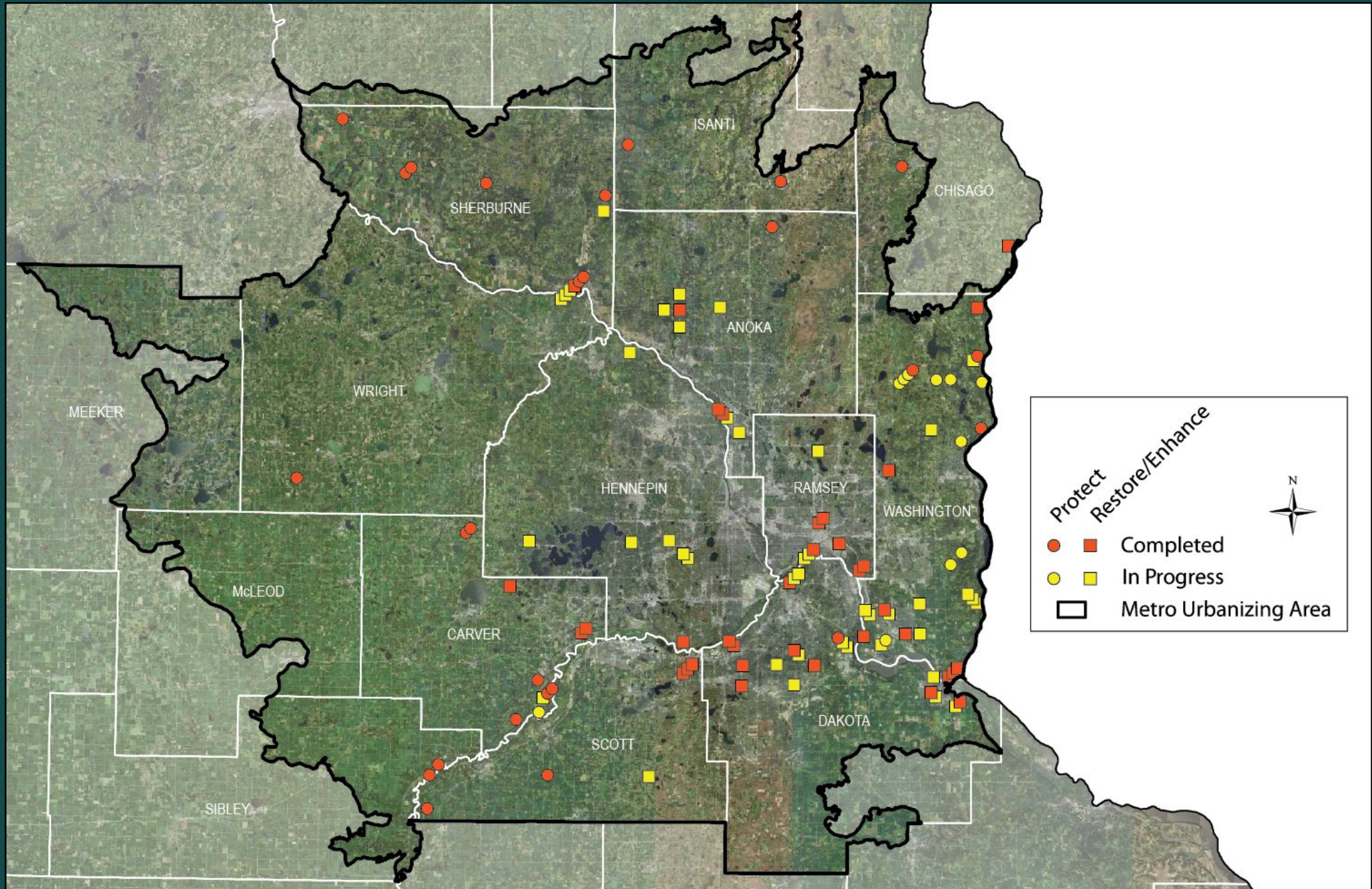
## Metro Big Rivers Progress Snapshot

3,200 acres protected

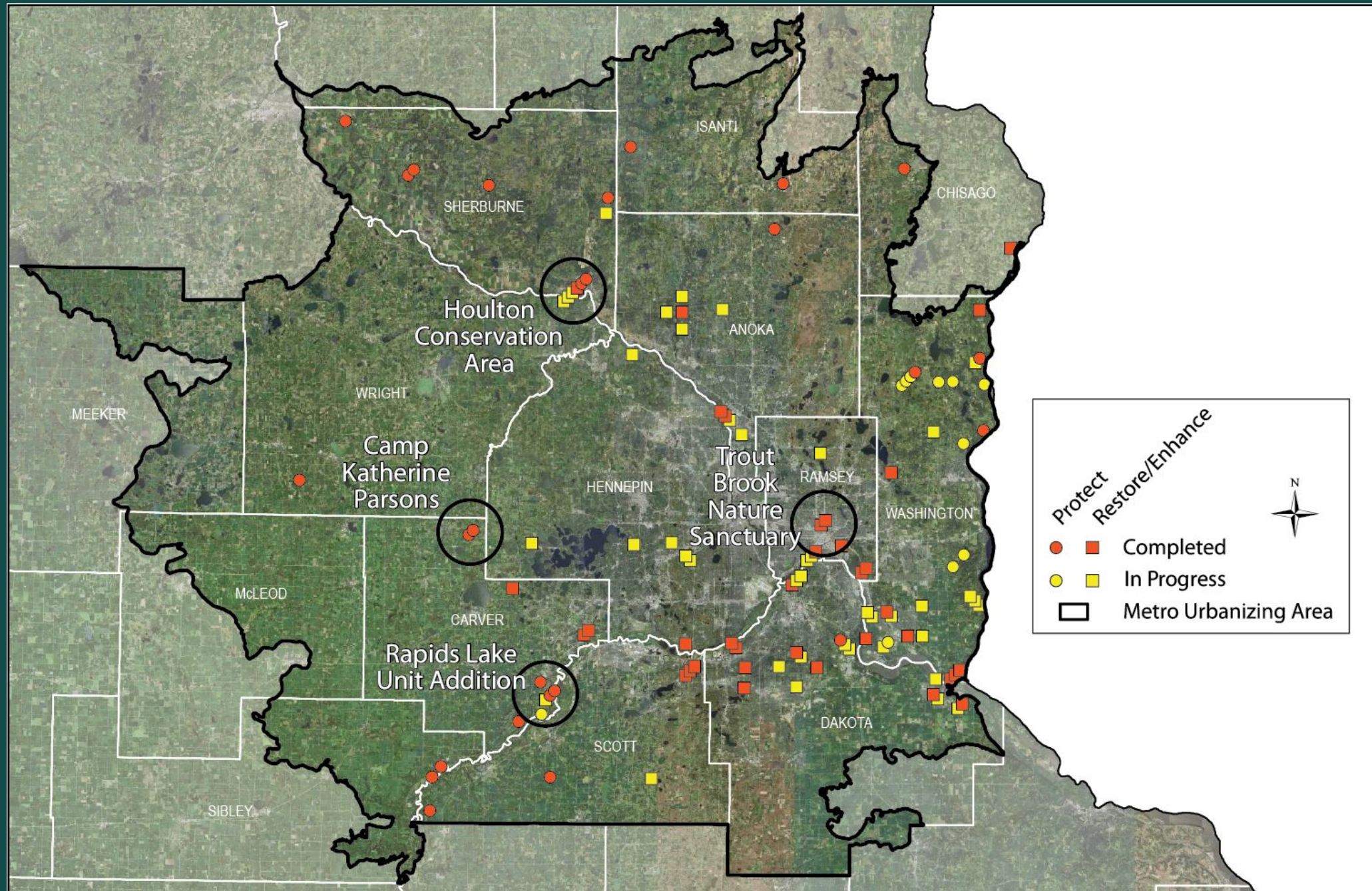
3,600 acres restored / enhanced

2,200 acres in progress

= 9,000 acres total to-date







# William H. Houlton Conservation Area, City of Elk River Sherburne County

Protect &  
Restore  
360 acres



# William H. Houlton Conservation Area



## Forest Enhancement – 155 acres buckthorn removal



2019



# Wetland restoration by USFWS



# Prairie Restoration – 180 acres



2018 – Year 1



2019 – Year 2





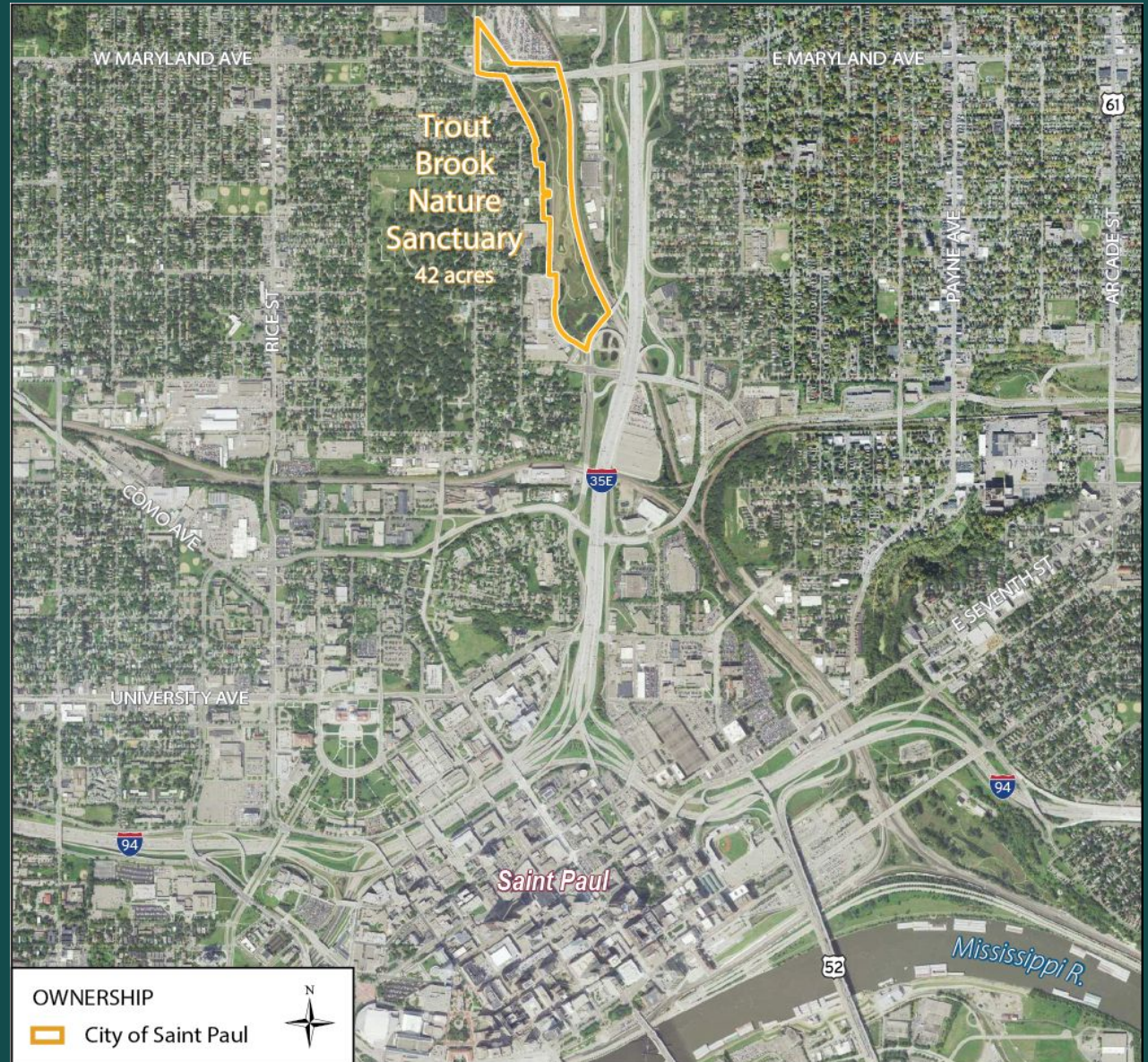
# 2020 & 2021 – Prescribed Burns



# Trout Brook Nature Sanctuary, City of St. Paul

## Ramsey County

Restore  
42 acres



GREAT RIVER GREENING 25 Years  
RESTORING LAND, WATER AND WONDER

# Trout Brook Nature Sanctuary -- before restoration



# Trout Brook was daylighted with other funds



# 700 volunteers engaged in hands-on conservation



Migratory birds use the site as stopover / nesting area



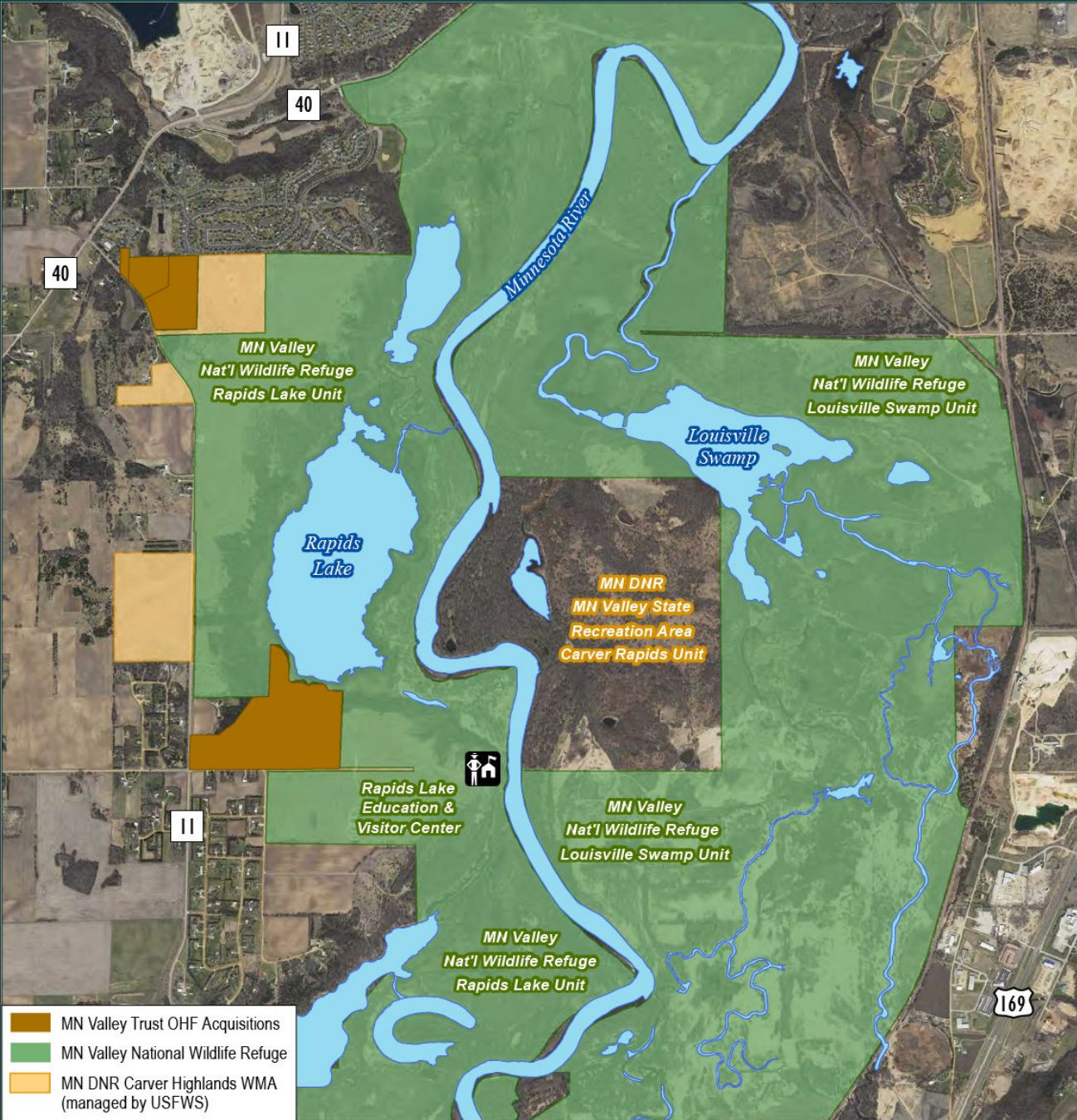
# Songbirds, pollinators and residents all appreciate the prairie



# Minnesota Valley National Wildlife Refuge, USFWS

Rapids Lake Unit  
Carver County

Protect & Restore  
109 acres

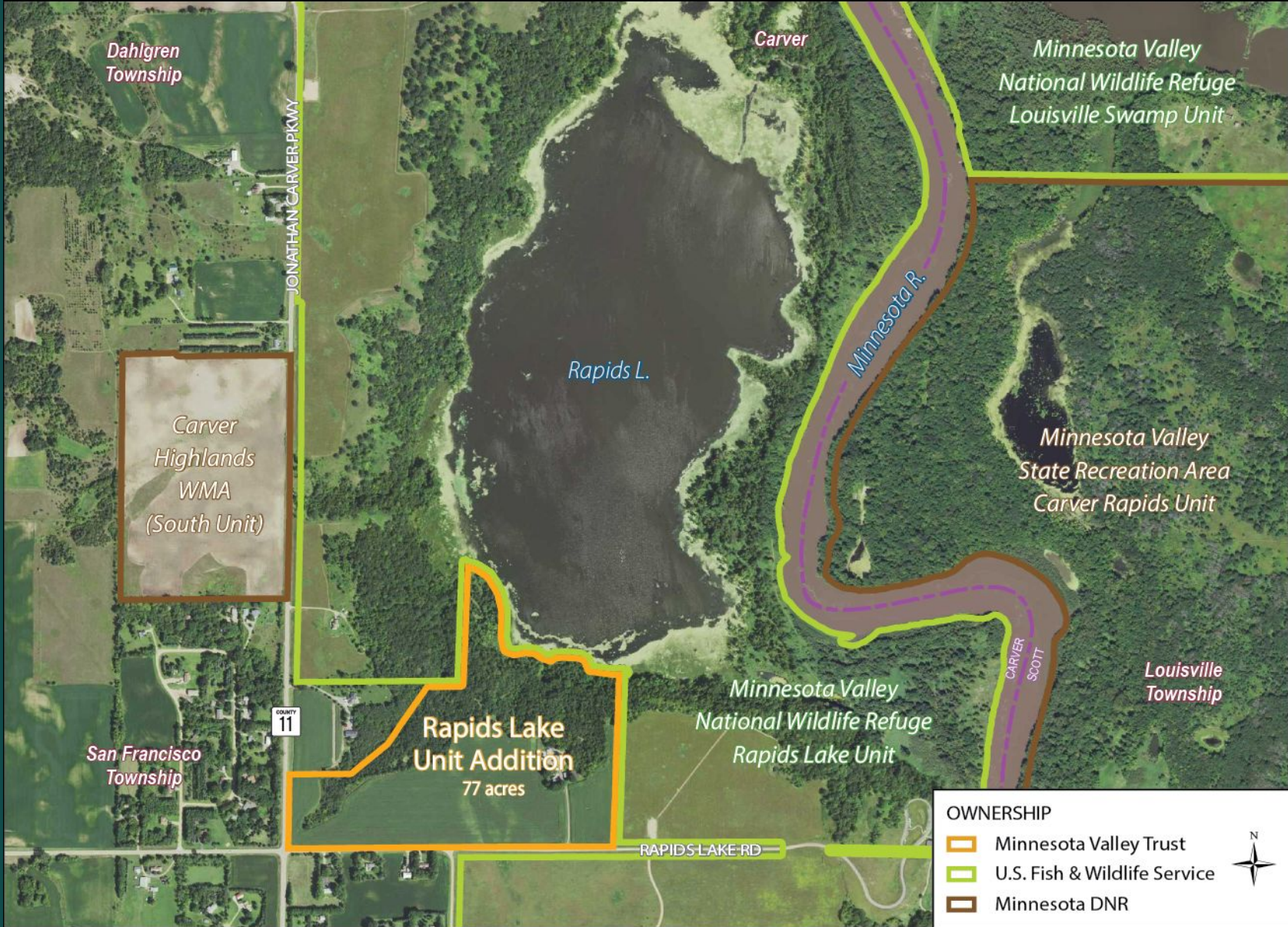




# Minnesota Valley National Wildlife Refuge, USFWS

## Carver County

Protect & Restore  
109 acres



# Degraded oak savanna and prairie



# Invasive woody species removal underway



# Prescribed burn by USFWS at Rapids Lake Unit



# Restored oak savanna at Rapids Lake Unit



# Camp Katherine Parsons, Phyllis Wheatley Community Center Carver County

Protect  
85 acres



Registered as “Big Woods Heritage Forest”



# Protecting Oak Lake -- 1.5 miles shoreline & 46 acres wetland habitat





# Connecting urban residents with wildlife and outdoor recreation





## Build a Strong Conservation Ethic in Minnesota

- Nature nearby
- Volunteerism
- Engage youth
- Partnerships





Thank you,  
LSOHC, for your  
partnership