

Protection Summary FA03 - Camp Ripley Sentinel Landscape ACUB, Phase IX

Pre-ACUB: 33.8%

Total Protected (5-mile):
85,382 acres

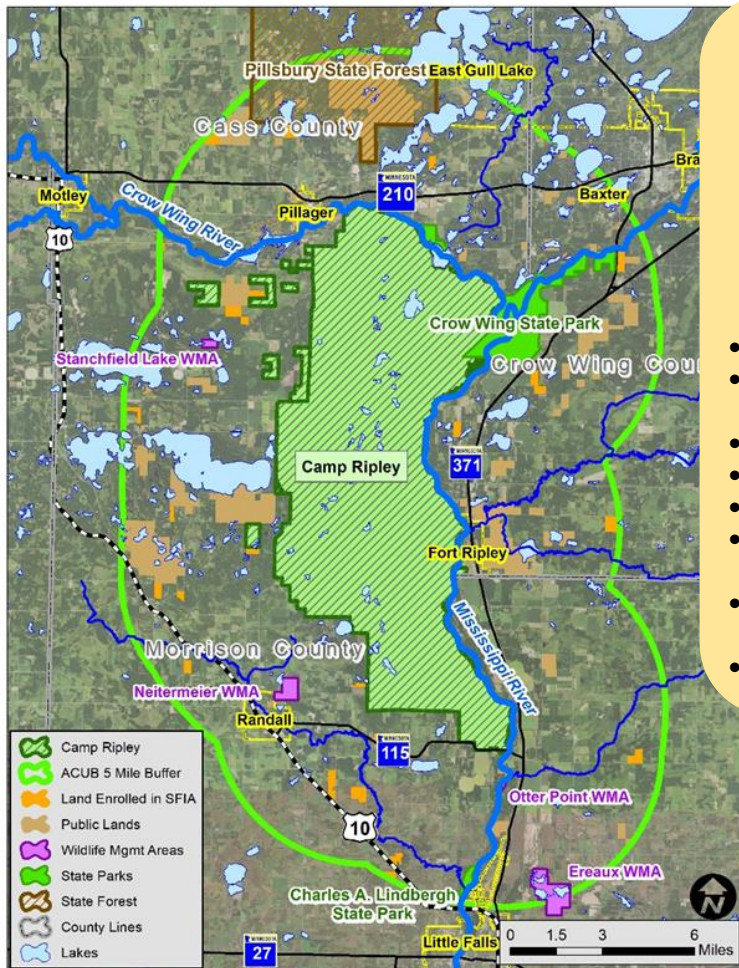


Current: 50.0%

Total Protected (5-mile):
126,351 acres



End State Protection Goal: 65%
Federally Funded: 28,200 additional easement acres
LSOHC Funded: 7,050 additional easement acres
SFIA: 1,500 additional acres enrolled

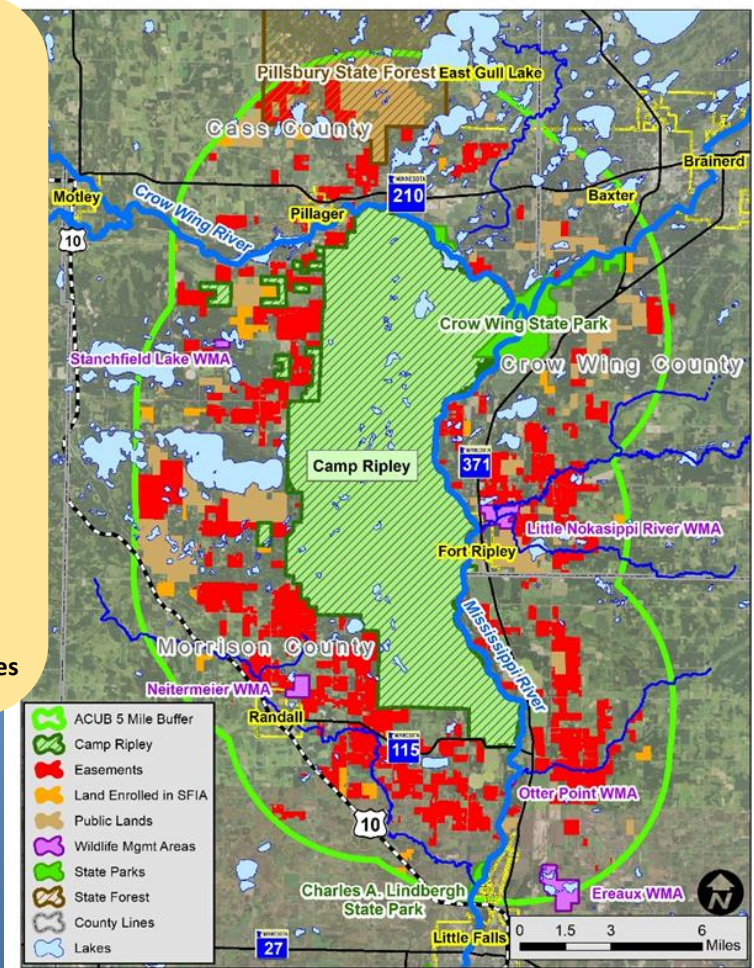


Habitat Quality Meter (Habitometer):

Less Base More

- High Terrestrial Biodiversity
- High Wildlife Action Network Score
- Wild Rice Lakes
- Trout Streams
- Stream Confluences
- Lakes of High/Outstanding Biodiversity
- High Fisheries Habitat

•5 Mile Work Area: 252,637 acres



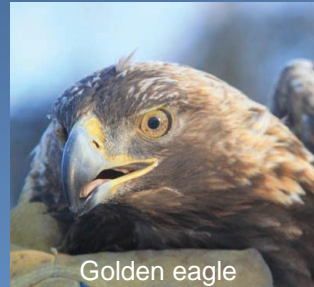
Program Status

Leveraged

Federal Funding To Date:
\$42,480,400

LSOHC Funding To Date:
\$14,962,000

- 300+ easements completed
- 31,500+ easement acres
- 2,270+ fee title acquisition acres
- 300+ landowner donated acres
- 200+ interested landowners



Golden eagle



Blanding's turtle

Wildlife

This landscape provides:

- Habitat for a diversity of wildlife including Minnesota's largest carnivores, black bear and gray wolf.
- Important breeding and migratory habitat for 65 bird species in greatest conservation need (SGCN). There are 32 SGCN birds including water birds, raptors and songbirds that are known to breed here, to include 11 known bald eagle breeding territories.
- Habitat for the northern long-eared bat that is a federally-listed threatened species.
- Habitat for the Blanding's turtle that is state-listed threatened species and candidate for federal listing as a threatened/endangered species.
- Located within this landscape is the confluence of the Crow Wing and Mississippi Rivers. Three major watersheds: the Crow Wing River, Long Prairie River and Mississippi River – Brainerd. Sound management of the forested lands surrounding the Mississippi River and its tributaries protects water quality.
- A high diversity of life forms (over 600 plant species, 233 migratory and resident bird species, 51 mammal species, and 23 reptile and amphibian species).

Protecting and Creating Habitat Corridors/Complex's

- Buffering Camp Ripley (Minnesota's Largest State Game Refuge).
- Buffering Five WMAs – One WMA Created (Little Nokasippi WMA and 200 acres added to Ereaux WMA).
- Buffering State Forests, Scientific Nature Areas, State Parks, County Parks, TNC lands and City Greenspaces.
- Supports Camp Ripley's Natural Resources Conservation Team's (the 2020 Secretary of the Army Environmental Award winner) comprehensive and integrated approach toward caring for the surrounding environment.

Camp Ripley Hunting & Fishing Opportunities (Average)

Turkey Hunts	Permits	Hunters
Disabled veteran	36	32
Service members	81	49
White-tailed Deer Hunts		
Disabled veteran	48	45
Public	4,216	3,399
Service members archery	122	69
Service members muzzleloader	71	51
Youth	160	110

Trolling for Troops

A fishing event held annually with the help and support of partner organizations, pairing professional fishing guides with active service members, retired service members and veterans.