

Lessard-Sams Outdoor Heritage Council

MEMO: Agenda Item #8

DATE: June 29, 2016

SUBJECT: Accomplishment Plan Amendment
ML 2014, Ch. 256, Art. 1, Sec. 2, Subd. 3(a), Preventing Forest Fragmentation and
Protecting and Restoring Lake and Stream Habitat in St. Louis County

PRESENTER: Thomas Howes, Fond du Lac Band of Lake Superior Chippewa

Suggested Motion:

Motion to approve the acquisition of land in the public domain as the purchase creates additional direct benefits sought by the Outdoor Heritage Fund (OHF), the purchase will protect forest fragmentation and enable better management of fish and wildlife in the St. Louis River watershed area. Otherwise make no motion or a negative motion may be made referring to no additional direct benefits.

Past council practice has been to approve purchases of tax-forfeit land and county-owned land because additional protection is realized using OHF funds.

Background: Fond du Lac Band of Lake Superior Chippewa (FDL) is seeking an accomplishment plan amendment with additional parcels to complete the purchase of non-conservation tax-forfeited land currently owned by St. Louis County. FDL is given the right of first refusal (per ML 1985, Ch. 138, Sec. 5) to purchase lands owned by the county within the reservation.

Sec. 5. [FOND DU LAC RESERVATION LANDS.]

If a parcel of land subject to sale under Minnesota Statutes, sections 282.01 to 282.13, includes land within the Fond du Lac Indian reservation, the county auditor shall first offer the land to the Fond du Lac band of Chippewa Indians for sale at the appraised value. The cost of any survey or appraisal must be added to and made a part of the appraised value. To determine whether the band wants to buy the land, the county auditor shall give written notice to the band. If the band wants to buy the land, it shall submit a written offer to the county auditor within two weeks after receiving the notice. If the offer is for at least the appraised value, the county auditor shall accept it.

LSOHC approval is necessary because the land is in the public domain as described in M.S. 97A.056, Subd. 9. Lands in public domain. The statute only allows the OHF to be used to buy publically owned land if certain criteria are met.

Subd. 9. Lands in public domain.

Money appropriated from the outdoor heritage fund shall not be used to purchase any land in fee title or a permanent conservation easement if the land in question is fully or partially owned by the state of Minnesota or a political subdivision of the state, unless: (1) the purchase creates additional direct benefit to protect, restore, or enhance the state's wetlands, prairies, forests, or habitat for fish, game, and wildlife; and (2) the purchase is approved by an affirmative vote of at least nine members of the council.

FDL is here today presenting a request for the council's agreement to the additional forest fragmentation protection and restoration and enhancement benefits from their purchase of and owning the lands.

There are additional funds in this program to purchase lands not in the original accomplishment plan, because the Simian Lake property (original to the accomplishment plan) was estimated to be valued at \$1,750,000, but the appraisal yielded a lower amount. Thus additional funds are available within the intent of the appropriation law for this program to purchase land not in the original accomplishment plan. All other parcels in the original accomplishment plan are closed or have signed purchase agreements.

A summary of information received by staff from FDL and St. Louis County follows:

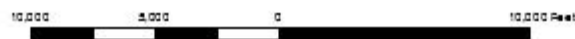
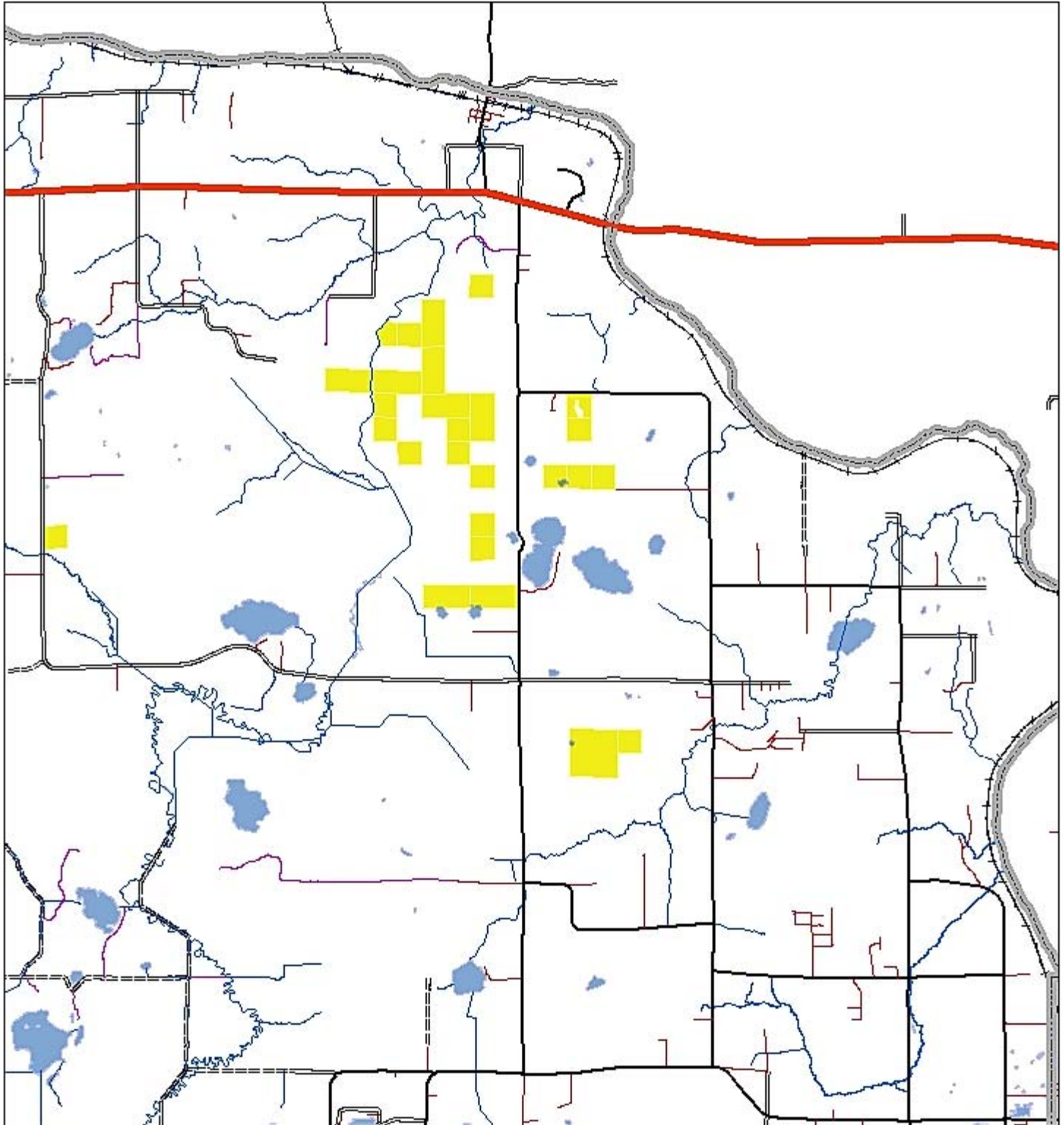
- St. Louis County Department of Land and Minerals clarified that these parcels are classified as "non-conservation" lands.
- St. Louis County holds three public auctions and several non-public adjoining owner land sales each year and actively divests itself of smaller, scattered landholdings.
- Tax-forfeited lands are governed by MS 282.01. Tax-forfeit lands are held by the state in trust for the local unit of government. Counties decide if tax-forfeit lands should be retained or be returned to private ownership. Lands retained by the state in trust are classified as "conservation" or "conservation lands" based on agriculture or other industry uses. Counties often re-classify lands prior to public sale.
- The public would access the parcels for hunting and fishing as they currently do, by existing roads and trails.
- The location of all lands acquired with OHF funds are reported to MN DNR for inclusion in their larger listings of lands open to outdoor recreation.
- The parcels are part of a larger undeveloped landscape that provides excellent wildlife habitat. One main priority of the program is to prevent forest fragmentation; the acquisition of these lands achieves that.

Upon approval, FDL will add these parcels to their accomplishment plan and complete the purchase. If the council does not approve, FDL will not acquire the parcels and will seek to acquire private parcels with the remaining funding.

Attachments:

Maps of parcels on the landscape
Accomplishment plan

St. Louis County Land Acquisition Priorities-1500 Acres



UTM NAD 83 Zone 15
FDL Resource Management
GIS Environmental
218 878 8028



Legend

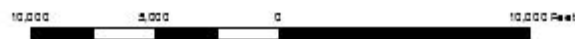
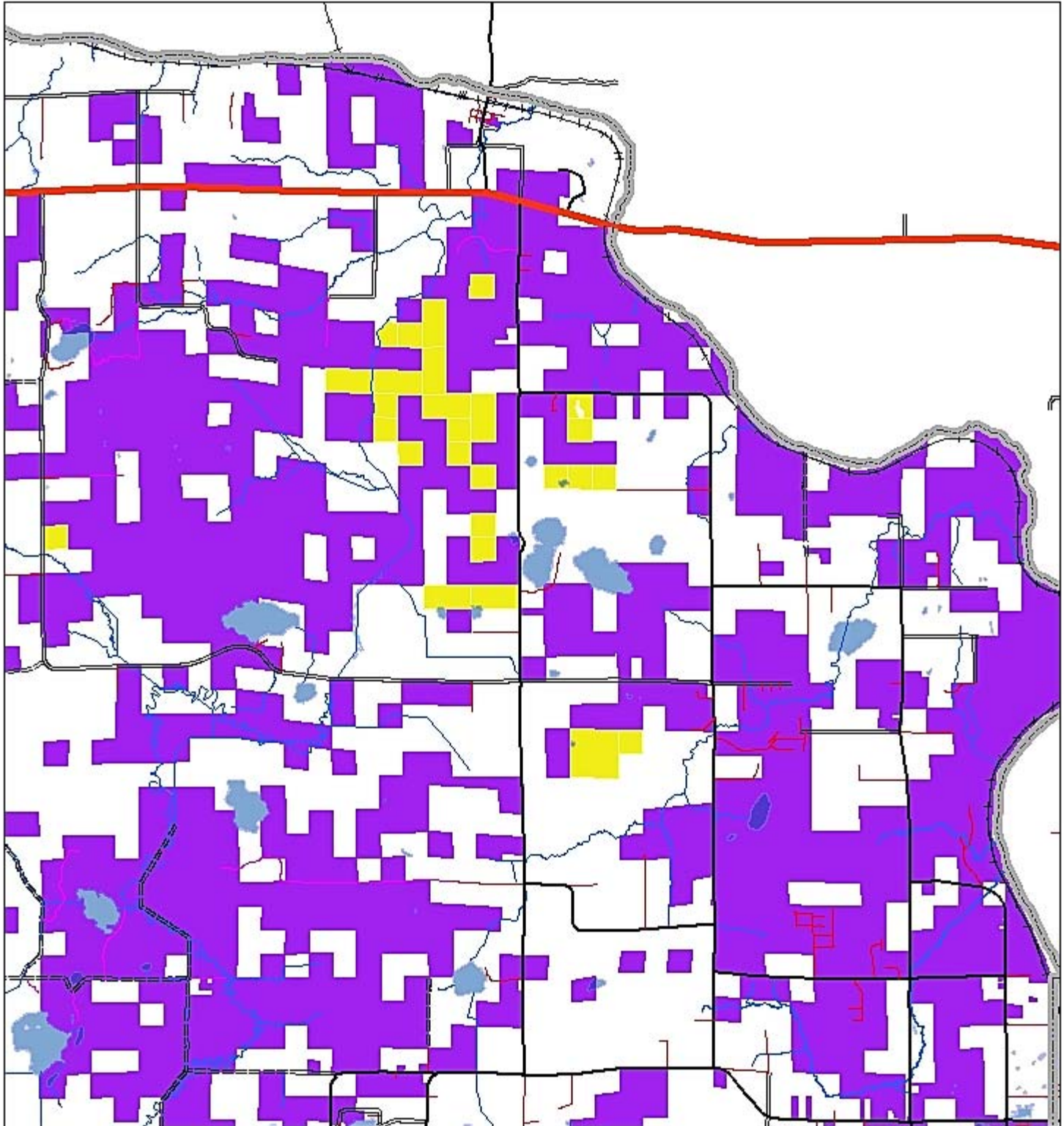


P1

Disclaimer: FDL makes no representations about the suitability of this map for any purpose. The map is provided "as is" without express or implied warranties, including warranties of merchantability and fitness for a particular purpose or performance.

Printing Date: February 9, 2015

St. Louis County Land Acquisition Priorities-1500 Acres



UTM NAD 83 Zone 15
FDL Resource Management
GIS Environmental
218 878 8028



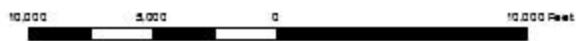
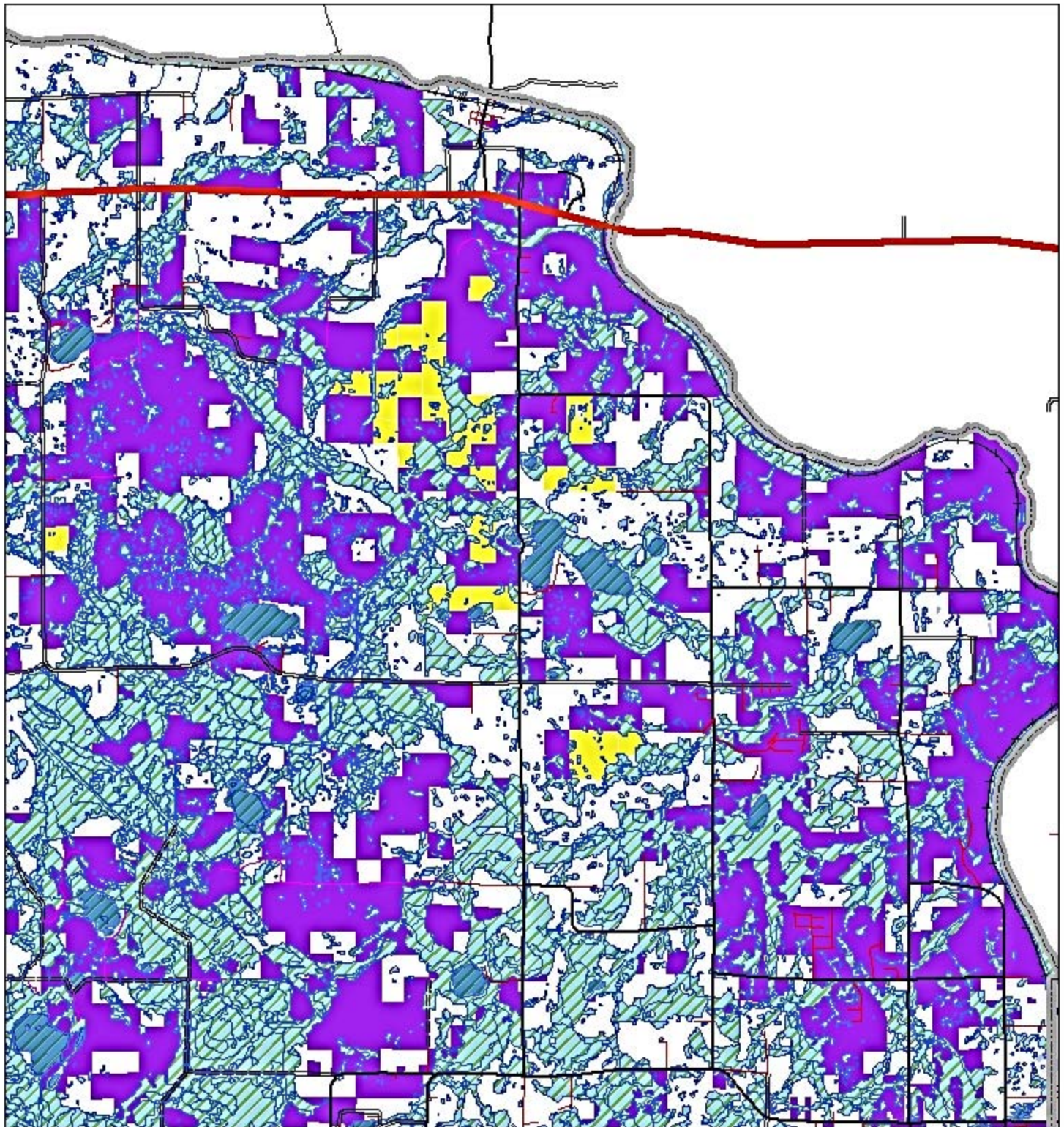
Legend

■ P1

Disclaimer: FDL makes no representations about the suitability of this map for any purpose. The map is provided "as is" without express or implied warranties, including warranties of merchantability and fitness for a particular purpose or performance.

Printing Date: February 9, 2015

St. Louis County Land Acquisition Priorities-1500 Acres



UTM NAD 83 Zone 15
FOL Resource Management
GIS Environmental
218 878 8028



Legend

■ P1

Disclaimer: FOL makes no representations about the suitability of this map for any purpose. The map is provided "as is" without express or implied warranty, including warranties of merchantability and fitness for a particular purpose or infringement.

Printing Date: February 9, 2015

Lessard-Sams Outdoor Heritage Council

Laws of Minnesota 2014 Accomplishment Plan



Date: January 26, 2016

Program or Project Title: Preventing Forest Fragmentation and Protecting and Restoring Lake and Stream Habitat in the St. Louis River Watershed

Funds Recommended: \$ 2,800,000

Manager's Name: Thomas Howes
Title: Natural Resources Manager
Organization: Fond du Lac Band of Lake Superior Chippewa
Address: 1720 Big Lake Road
City: Cloquet, MN 55720
Office Number: 218-878-7163
Mobile Number: 218-591-2687
Email: thomashowes@fdlrez.com
Website: www.fdlrez.com

Legislative Citation: ML 2014, Ch. 256, Art. 1, Sec. 2, Subd. 3(a)

Appropriation Language: \$2,800,000 in the second year is to the commissioner of natural resources for a contract with the Fond du Lac Band of Lake Superior Chippewa to acquire lands in fee in the St. Louis River watershed to be managed for fish and wildlife purposes. A list of proposed land acquisitions must be provided as part of the required accomplishment plan.

Explanation of Amendment Change: Addition of 1500 acres of St. Louis County Tax Forfeited lands. Surplus funding was identified after appraisals of lands in the original accomplishment plan were conducted. In order to acquire and protect as much land as possible with state funding, undeveloped parcels were prioritized. In the search for lands, St. Louis County lands on the Fond du Lac Reservation met this criteria best. In keeping with the requirements of MS section 97A.056, subdivision 9 acquisition of these parcels cannot proceed until approved by an affirmative vote of at least nine members of the LSHOC. In addition the acquisition must create "additional direct benefit to protect, restore, or enhance the state's wetlands, prairies, forests, or habitat for fish, game, and wildlife". It is our belief that criteria above can be satisfied by the Band acquiring the land and placing permanent conservation protections on the land title. We also assert that having the lands placed under one management agency's supervision vs. two is beneficial as well. St. Louis County has openly stated that they have not inventoried the timber on these parcels because of the fact that they are small tracts, isolated and intermingled with Band lands. Under Band management the broader landscape can be actively managed to reflect the cultural priorities of the Band and for the benefit of wildlife in a more seamless fashion.

The 1985 MN Legislature passed Chapter 138, Section 5 into law giving the Fond du Lac Band of Lake Superior Chippewa first opportunity to purchase any tax forfeited lands to be sold within its Reservation. St. Louis County Board Resolution No.86-77 ratified and approved all provisions of that statute. Fond du Lac Natural Resources Program staff sought the support of the St. Louis County Board in this endeavour and on 12/1/2015 the Board unanimously passed Resolution 15-735, supporting the sale of the parcels added. The parcels are deemed by St. Louis County to be "not crucial to the Land and Minerals Department's forest management program and were targeted for liquidation in the past".

County Locations: Carlton, and St. Louis.

Regions in which work will take place:

- Northern Forest

Activity types:

- Protect in Fee

Priority resources addressed by activity:

- Forest

- Habitat
- Prairie
- Wetlands

Abstract:

This project will prevent forest fragmentation and protect and restore lake and stream habitat in the St. Louis River watershed through the fee acquisition of 956 acres and the restoration and enhancement of 271 acres of forests, prairie, and wetlands.

Design and scope of work:

The Fond du Lac Band of Lake Superior Chippewa is pleased to present this proposal to prevent forest fragmentation and to protect and restore lake and stream habitat in the St. Louis River watershed through the fee acquisition of 956 acres and the restoration and enhancement of 271 acres of forests, prairie, and wetlands. This project includes acquisition of a 440-acre priority property containing an 80-acre lake, acquisition of 280 acres along a tributary to the St. Louis River, and acquisition of 236 acres with 2,000 feet along the St. Louis River. This project will protect the water quality of the St. Louis River, provide opportunities for public fishing and hunting, and prevent forest fragmentation.

I. Acquiring the 440-Acre Priority Property: Chi-wizo zaaga'iganing (Simian Lake)

The priority for this project is the acquisition of a 440-acre property ("Priority Property"), which is one of the largest privately owned properties within the Fond du Lac Reservation and is being marketed by a real estate broker. The Priority Property contains 83 acres of wetlands and an 80-acre lake, Chi-wizo zaaga'iganing (also known as Simian Lake), which is classified as a high-priority fishery and drains into the St. Louis River. Preventing development of this lake will contribute to the restoration efforts of the St. Louis River by eliminating potential sources of sediment and nutrient loads. By purchasing the Priority Property in its entirety, the Fond du Lac Band will prevent fragmentation of the 194 acres of forest habitat on the Property.

II. Restoring and Enhancing Forests, Prairie, and Wetlands on the Priority Property

The Fond du Lac Band will perform extensive restoration and enhancement activities to improve the quality of the forests, prairie, and wetlands on the Priority Property. Two hundred twenty acres of uplands will be restored or enhanced as forests or prairie. Twenty-one acres of wetlands will be restored and another 30 acres of wetlands will be enhanced by improving the hydrologic flow by filling in ditches and removing compacted soil impeding waterflow. The wetlands will be managed to control invasive species.

III. Acquiring 280 Acres Along the Simian Creek Riparian Corridor

Simian Creek flows north from the Priority Parcel for approximately 3.6 miles before its confluence with the St. Louis River. For 1.8 miles, Simian Creek flows through several properties in private ownership (the "Riparian Properties"). Protecting the Riparian Properties will provide public control of the entire riparian corridor to the confluence with the St. Louis River. This will facilitate the management of the watershed to reduce sediment and nutrient loads into the St. Louis River.

IV. Acquiring 236 Acres Along the Main Stem of the St. Louis River

The Fond du Lac Band will also acquire 236 acres containing 2,000 feet along St. Louis River. This acquisition will further consolidate public ownership and facilitate restoration efforts along the St. Louis River.

V. The Fond du Lac Band Has Substantial Expertise in Land Management

The Fond du Lac Reservation's boundary encompasses more than 101,000 acres, including 3,000 acres of lakes, nearly 44,000 acres of wetlands, 96 miles of rivers and streams, and over 28,000 acres of forests. The Fond du Lac Band has an annual budget of \$4 million to manage and conserve its natural resources. In 2008, the Fond du Lac Band adopted an Integrated Resource Management Plan to guide its work and establish priorities. This project addresses the priorities of this Plan.

VI. Fee-to-Trust Process

After the Fond du Lac Band acquires the project properties, it will seek to transfer the land from "fee land" to "trust land" in which the fee title is held by the United States government, while the Fond du Lac Band retains the beneficial use of and full management responsibilities for the land. Should the Secretary of Interior approve a trust application for the parcels contained in our proposal, the terms and conditions contained in Minnesota law, specifically Minn. Stat. § 97A.056, subds 15-16, and the Accomplishment Plan would not be impacted and would remain in force.

The most salient issue for the Secretary's decision would likely be the reverter of title pursuant to Minn. Stat. § 97A.056, subds 15-16. It

is critical to recall that the reverter only applies should the Band not comply with the grant agreement or Accomplishment Plan or restrictions are placed on the land that preclude its use for the intended conservation purposes. In some cases trust applications that included a title reverter have been denied, but this was when the acquiring entity planned to make permanent improvements on the property. Our proposal does not contemplate any permanent improvements and therefore we do not believe that the reverter will be a barrier to approval. In any event, the terms and conditions to which the Band and the State of Minnesota agree will follow the land whether it is held in fee or transferred to trust.

It is important to note that this land acquisition proposal and planned trust application is not without precedent in Minnesota. This proposal and planned trust application is nearly identical to the joint venture between the State of Minnesota and the Grand Portage Band for the creation of the Grand Portage State Park. In that case, the Band purchased state land for the park and applied to put those parcels into trust. Pursuant to Minn. Laws 1989, Ch. 259, § 7, a reverter of title provision was included in the sale in the event that the land was not used for a state park. The U.S. Attorney General and Dept. of Interior determined that trust status was appropriate subject to the reverter. The Attorney General's opinion was based, in part, on the fact that the land did not contain any permanent improvements.

The controlling legal authority on this issue has not changed since the Grand Portage application was approved. We believe it is likely that this land acquisition would be treated similarly.

Which sections of the Minnesota Statewide Conservation and Preservation Plan are applicable to this project:

- H2 Protect critical shoreland of streams and lakes
- H3 Improve connectivity and access to recreation
- H4 Restore and protect shallow lakes
- H5 Restore land, wetlands and wetland-associated watersheds
- H7 Keep water on the landscape
- LU8 Protect large blocks of forest land

Which other plans are addressed in this proposal:

- Lower St. Louis River Habitat Plan
- Managing Minnesota's Shallow Lakes for Waterfowl and Wildlife
- Minnesota DNR Strategic Conservation Agenda
- State Comprehensive Outdoor Recreation Plan
- 2008 Integrated Resource Management Plan, Fond du Lac Band of Lake Superior Chippewa

Which LSOHC state-wide priorities are addressed in this proposal:

- Are ongoing, successful, transparent and accountable programs addressing actions and targets of one or more of the ecological sections
- Produce multiple enduring conservation benefits
- Provide Minnesotans with greater public access to outdoor environments with hunting, fishing and other outdoor recreation opportunities

Which LSOHC section priorities are addressed in this proposal:

Northern Forest:

- Protect shoreland and restore or enhance critical habitat on wild rice lakes, shallow lakes, cold water lakes, streams and rivers, and spawning areas
- Restore forest-based wildlife habitat that has experienced substantial decline in area in recent decades

Relationship to other funds:

- Not Listed

Describe the relationship of the funds:

Not Listed

How does this proposal accelerate or supplement your current efforts in this area:

A LSOHC grant will not displace existing Fond du Lac Band funding for conservation and natural resource management. Instead, the LSOHC grant will enable the Band to accelerate and expand its conservation efforts. Since the 1990s, the Fond du Lac Band has done extensive conservation work near the Chi-wizo zaga'iganing (Simian Lake) project area to protect the Stoney Brook sub-watershed of the St. Louis River. This conservation work includes restoring hundreds of acres of wild rice habitat on nearby lakes and is detailed in the Band's 2008 Integrated Resource Management Plan. Receiving the LSOHC grant will enable the Band to seize the unique opportunity that was created when the 440-acre property encompassing Chi-wizo zaaga'iganing (Simian Lake) was put up for sale. The Band will continue with its current restoration efforts on wild rice lakes and its other conservation efforts in the Stoney Brook sub-watershed.

How will you sustain and/or maintain this work after the Outdoor Heritage Funds are expended:

The Fond du Lac Band has the personnel and financial resources to manage properly the 956 acres that will be acquired, restored, and enhanced through this project. The Fond du Lac Band has a \$4 million annual budget for natural resources management. Its natural resources staff includes 62 full-time employees and 30-40 seasonal staff, who are responsible for managing 100,000 acres within the Fond du Lac Reservation and for providing conservation services throughout historic Chippewa territories in Wisconsin and Michigan. The existing staff will be able to integrate the responsibilities for the project area into its work assignments.

The Band's staff includes a Forester, Fisheries Biologist, Wildlife Biologist, Wetlands Specialist, Watershed Specialist, and Natural Resources Manager, who together will develop a stewardship plan for the project area, including protocol for controlling invasive species and conducting prescribed burns. In addition to its own funds, the Band will seek grants from NRCS, FWS, and U.S. EPA, which have awarded the Fond du Lac Band grants in the past for conservation work.

Activity Details:

Will there be planting of corn or any crop on OHF land purchased or restored in this program - **Not Listed**

Will local government approval be sought prior to acquisition - **Yes**

Is the land you plan to acquire free of any other permanent protection - **Yes**

Is this land open for hunting and fishing - **Yes**

The Fond du Lac Band's culture is strongly linked to hunting and fishing. Hunting and fishing will be regulated on the properties to be acquired the same way these activities are regulated throughout northeast Minnesota. In this region, there is a shared DNR-tribal system of regulations where tribal members are subject to tribal regulations and non-tribal members are subject to DNR regulations. This shared system is the result of hunting, fishing, and gathering rights that the Band retains under treaties with the federal government.

The Fond du Lac Band is deeply committed to sustainably managing natural resources. Below is a link to the Band's Resource Management Division webpage where annual seasons and limits as well as information on all applicable harvest regulations for Fond du Lac Band Members can be found:

<http://fdlrez.com/newnr/main.htm>

The Fond du Lac Band understands and respects the diversity of perspectives on wolf hunting. The Fond du Lac Band also understands and respects the constitutional requirement that land acquired with Outdoor Heritage Fund monies be open to public fishing and hunting unless otherwise provided by law. We believe that a balanced approach to this issue requires respecting traditional Ojibwe culture as well as local law. All lands acquired by this project will be off limits to wolf hunting and trapping as the properties are within the boundaries of the Fond du Lac Reservation and would be subject to Fond du Lac Band of Lake Superior Chippewa Ordinance #07/12 "Ma'iingan Protection".

Accomplishment Timeline:

Activity	Approximate Date Completed
Negotiate with the landowners of the 440-acre Priority Property encompassing Chi-wizo zaagaiganing (Simian Lake) and the St. Louis River Main Stem Property and enter into purchase agreements	August 1, 2014
Complete due diligence for the acquisition of the Priority Property and St. Louis River Main Stem Property	November 1, 2014
Negotiate with the landowners of the Riparian Properties and enter purchase agreements	December 1, 2014
Acquire fee title to the Priority Property and the St. Louis River Main Stem Property	February 1, 2015
Complete due diligence for the acquisition of the Riparian Properties	April 1, 2015
Develop Forest, Prairie, and Wetland Restoration and Enhancement Plan for the Priority Property	June 1, 2015
Begin implementing the Restoration and Enhancement Plan for the Priority Property	September 1, 2015
Acquire fee title to the Riparian Properties	December 1, 2015
Complete implementation of the Restoration and Enhancement Plan for the Priority Property	July 1, 2018

Date of Final Report Submission: 11/1/2018

Federal Funding:

Do you anticipate federal funds as a match for this program - **Not Listed**

Outcomes:

Programs in the northern forest region:

- Forestlands are protected from development and fragmentation *The nearly 400 total acres of forestland at the project sites will be measured against a baseline year as to age classification and diversity of tree types.*
- Healthy populations of endangered, threatened, and special concern species as well as more common species *Periodic surveys will be conducted at Simian Lake, Simian Creek, and upland areas to evaluate the size and biodiversity of plant and animal populations.*
- Improved aquatic habitat indicators *Fisheries surveys on a 5 year cycle, benthic macroinvertebrate community composition sampled annually, and water quality sampling four times per year will be continued at Simian Lake and Simian Creek along with existing sampling of the St. Louis River and compared to existing baseline data.*
- Increased availability and improved condition of riparian forests and other habitat corridors *The age class and diversity of tree types in the riparian corridor will be measured against a baseline year.*
- Greater public access for wildlife and outdoors-related recreation *Number of visitors will be measured by car counts in parking lots, school visits, and game harvest registrations.*

Budget Spreadsheet

Budget reallocations up to 10% do not require an amendment to the Accomplishment Plan

How will this program accommodate the reduced appropriation recommendation from the original proposed requested amount

Not Listed

Total Amount of Request: \$ 2800000

Budget and Cash Leverage

Budget Name	LSOHC Request	Anticipated Leverage	Leverage Source	Total
Personnel	\$0	\$557,400	Fond du Lac Band, Fond du Lac Band, Fond du Lac Band, Fond du Lac Band, Fond du Lac Band, Fond du Lac Band, Fond du Lac Band, Fond du Lac Band, Fond du Lac Band, Fond du Lac Band	\$557,400
Contracts	\$146,000	\$0		\$146,000
Fee Acquisition w/ PILT	\$0	\$0		\$0
Fee Acquisition w/o PILT	\$2,637,000	\$0		\$2,637,000
Easement Acquisition	\$0	\$0		\$0
Easement Stewardship	\$0	\$0		\$0
Travel	\$0	\$0		\$0
Professional Services	\$17,000	\$17,000	FDL Band	\$34,000
Direct Support Services	\$0	\$0		\$0
DNR Land Acquisition Costs	\$0	\$0		\$0
Capital Equipment	\$0	\$0		\$0
Other Equipment/Tools	\$0	\$0		\$0
Supplies/Materials	\$0	\$0		\$0
DNR IDP	\$0	\$0		\$0
Total	\$2,800,000	\$574,400		\$3,374,400

Personnel

Position	FTE	Over # of years	LSOHC Request	Anticipated Leverage	Leverage Source	Total
Fisheries Biologist	0.20	5.00	\$0	\$54,000	Fond du Lac Band	\$54,000
Wildlife Biologist	0.20	5.00	\$0	\$54,000	Fond du Lac Band	\$54,000
Natural Resources Program Manager	0.15	5.00	\$0	\$58,500	Fond du Lac Band	\$58,500
Forester	0.15	5.00	\$0	\$45,000	Fond du Lac Band	\$45,000
Fire Crew Supervisor	0.20	5.00	\$0	\$38,400	Fond du Lac Band	\$38,400
Fire Crew (3)	0.60	5.00	\$0	\$90,000	Fond du Lac Band	\$90,000
Watershed Specialist	0.20	5.00	\$0	\$42,000	Fond du Lac Band	\$42,000
Conservation Officers (3)	0.20	5.00	\$0	\$126,000	Fond du Lac Band	\$126,000
Wetland Specialist	0.30	5.00	\$0	\$49,500	Fond du Lac Band	\$49,500
Total	2.20	45.00	\$0	\$557,400		\$557,400

Output Tables

Table 1a. Acres by Resource Type

Type	Wetlands	Prairies	Forest	Habitats	Total
Restore	0	0	0	0	0
Protect in Fee with State PILT Liability	0	0	0	0	0
Protect in Fee W/O State PILT Liability	83	26	436	411	956
Protect in Easement	0	0	0	0	0
Enhance	0	0	0	0	0
Total	83	26	436	411	956

Table 1b. How many of these Prairie acres are Native Prairie?

Type	Native Prairie
Restore	0
Protect in Fee with State PILT Liability	0
Protect in Fee W/O State PILT Liability	0
Protect in Easement	0
Enhance	0
Total	0

Table 2. Total Requested Funding by Resource Type

Type	Wetlands	Prairies	Forest	Habitats	Total
Restore	\$0	\$0	\$0	\$0	\$0
Protect in Fee with State PILT Liability	\$0	\$0	\$0	\$0	\$0
Protect in Fee W/O State PILT Liability	\$361,000	\$113,000	\$1,445,000	\$881,000	\$2,800,000
Protect in Easement	\$0	\$0	\$0	\$0	\$0
Enhance	\$0	\$0	\$0	\$0	\$0
Total	\$361,000	\$113,000	\$1,445,000	\$881,000	\$2,800,000

Table 3. Acres within each Ecological Section

Type	Metro Urban	ForestPrairie	SE Forest	Prairie	N Forest	Total
Restore	0	0	0	0	0	0
Protect in Fee with State PILT Liability	0	0	0	0	0	0
Protect in Fee W/O State PILT Liability	0	0	0	0	956	956
Protect in Easement	0	0	0	0	0	0
Enhance	0	0	0	0	0	0
Total	0	0	0	0	956	956

Table 4. Total Requested Funding within each Ecological Section

Type	Metro Urban	ForestPrairie	SE Forest	Prairie	N Forest	Total
Restore	\$0	\$0	\$0	\$0	\$0	\$0
Protect in Fee with State PILT Liability	\$0	\$0	\$0	\$0	\$0	\$0
Protect in Fee W/O State PILT Liability	\$0	\$0	\$0	\$0	\$2,800,000	\$2,800,000
Protect in Easement	\$0	\$0	\$0	\$0	\$0	\$0
Enhance	\$0	\$0	\$0	\$0	\$0	\$0
Total	\$0	\$0	\$0	\$0	\$2,800,000	\$2,800,000

Target Lake/Stream/River Feet or Miles

Parcel List

For restoration and enhancement programs ONLY: Managers may add, delete, and substitute projects on this parcel list based upon need, readiness, cost, opportunity, and/or urgency so long as the substitute parcel/project forwards the constitutional objectives of this program in the Project Scope table of this accomplishment plan. The final accomplishment plan report will include the final parcel list.

Section 1 - Restore / Enhance Parcel List

No parcels with an activity type restore or enhance.

Section 2 - Protect Parcel List

Carlton

Name	TRDS	Acres	Est Cost	Existing Protection?	Hunting?	Fishing?
St. Louis River East Bank 10	04917210	46	\$32,400	No	Limited	Full
St. Louis River East Bank 11	04917210	28	\$18,800	No	Limited	Full
St. Louis River East Bank 12	04917210	24	\$21,500	No	Limited	Full
St. Louis River East Bank 13	04917210	22	\$34,200	No	Limited	Full
St. Louis River East Bank 14	04917215	3	\$6,600	No		
St. Louis River East Bank 15	04917215	4	\$8,600	No	Limited	Full
St. Louis River East Bank 16	04917215	2	\$4,400	No	Limited	Full
St. Louis River East Bank 17	04917215	1	\$3,400	No	Limited	Full
St. Louis River East Bank 18	04917215	1	\$500	No	Limited	Full
St. Louis River East Bank 19	04917215	1	\$900	No	Limited	Full
St. Louis River East Bank 20	04917215	2	\$3,400	No	Limited	Full
St. Louis River East Bank 6	04917203	32	\$59,700	No	Limited	Full
St. Louis River East Bank 7	04917203	34	\$47,800	No	Limited	Full
St. Louis River East Bank 8	04917203	19	\$18,400	No	Limited	Full
St. Louis River East Bank 9	04917203	37	\$42,000	No	Limited	Full

St. Louis

Name	TRDS	Acres	Est Cost	Existing Protection?	Hunting?	Fishing?
Priority Property (Simian Lake Property)	05017229	440	\$1,750,000	No	Limited	Full
Riparian Properties	05017220	280	\$439,000	No	Limited	Full
SLTaxForfeit1	05018227	80	\$98,300	No	Limited	Full
SLTaxForfeit10	05018214	34	\$39,100	No	Limited	Full
SLTaxForfeit11	05018214	40	\$42,700	No	Limited	Full
SLTaxForfeit12	05018215	40	\$35,300	No	Limited	Full
SLTaxForfeit13	05018215	40	\$28,100	No	Limited	Full
SLTaxForfeit14	05018215	40	\$32,300	No	Limited	Full
SLTaxForfeit15	05018215	80	\$64,900	No	Limited	Full
SLTaxForfeit16	05018215	80	\$64,400	No	Limited	Full
SLTaxForfeit17	05018210	80	\$44,500	No	Limited	Full
SLTaxForfeit18	05018210	80	\$44,500	No	Limited	Full
SLTaxForfeit19	05018209	40	\$24,000	No	Limited	Full
SLTaxForfeit2	05018227	80	\$98,300	No	Limited	Full
SLTaxForfeit20	05018209	30	\$38,000	No	Limited	Full
SLTaxForfeit21	05018203	40	\$42,700	No	Limited	Full
SLTaxForfeit22	05018209	80	\$44,500	No	Limited	Full
SLTaxForfeit23	05018209	80	\$62,200	No	Limited	Full
SLTaxForfeit24	05018216	40	\$36,600	No	Limited	Full
SLTaxForfeit25	05018216	40	\$35,300	No	Limited	Full
SLTaxForfeit26	05018216	40	\$29,700	No	Limited	Full
SLTaxForfeit27	05019224	40	\$22,200	No	Limited	Full
SLTaxForfeit3	05018222	40	\$45,900	No	Limited	Full
SLTaxForfeit4	05018222	40	\$37,400	No	Limited	Full
SLTaxForfeit5	05018235	160	\$133,100	No	Limited	Full
SLTaxForfeit6	05018236	40	\$37,200	No	Limited	Full
SLTaxForfeit7	05018214	40	\$42,900	No	Limited	Full
SLTaxForfeit8	05018214	40	\$34,200	No	Limited	Full
SLTaxForfeit9	05018214	40	\$34,200	No	Limited	Full
St. Louis River East Bank 1	05017226	10	\$10,900	No	Limited	Full
St. Louis River East Bank 2	05017235	16	\$21,500	No	Limited	Full
St. Louis River East Bank 3	05017234	18	\$13,000	No	Limited	Full
St. Louis River East Bank 4	05017234	28	\$20,900	No	Limited	Full
St. Louis River East Bank 5	05017234	52	\$69,900	No	Limited	Full
St. Louis River Shoreline Property	05017218	236	\$0	No	Limited	Full

Section 2a - Protect Parcel with Bldgs

No parcels with an activity type protect and has buildings.

Section 3 - Other Parcel Activity

No parcels with an other activity type.

Completed Parcel: St. Louis River Shoreline Property

# of Total Acres:	236
County:	St. Louis
Township:	050
Range:	17
Direction:	2
Section:	18
# of Acres: Wetlands/Upland:	70
# of Acres: Forest:	166
# of Acres: Prairie/Grassland:	
Amount of Shoreline:	2850 (Linear Feet)
Name of Adjacent Body of Water (if applicable):	St. Louis River
Has there been signage erected at the site:	No - In process
Total cost of Restoration/Enhancement:	\$0
Annual Reporting Organization Name:	Fond du Lac Band of Lake Superior Chippewa
Annual Reporting Manager Name:	Thomas Howes
Annual Reporting Address:	1720 Big Lake Road
Annual Reporting City:	Cloquet
Annual Reporting State:	MN
Annual Reporting Zip:	55720
Annual Reporting Email:	thomashowes@fdlrez.com
Annual Reporting Phone:	218.878.7163
Purchase Date:	May 20, 2015
Purchase Price:	\$295,000
Appraised Value:	\$295,000
Professional Service Costs:	\$2,048
Property Managed By:	Other (Explain) -
Name of the unit area or location government unit or land manager:	Fond du Lac Band of Lake Superior Chippewa

Parcel Map

Preventing Forest Fragmentation and Protecting and Restoring Lake and Stream Habitat in the St. Louis River Watershed

