

Lessard-Sams Outdoor Heritage Council

MEMO: **Agenda Item #7**

DATE: February 11, 2016

SUBJECT: DNR Parcel Prioritization Process & Land Management Systems

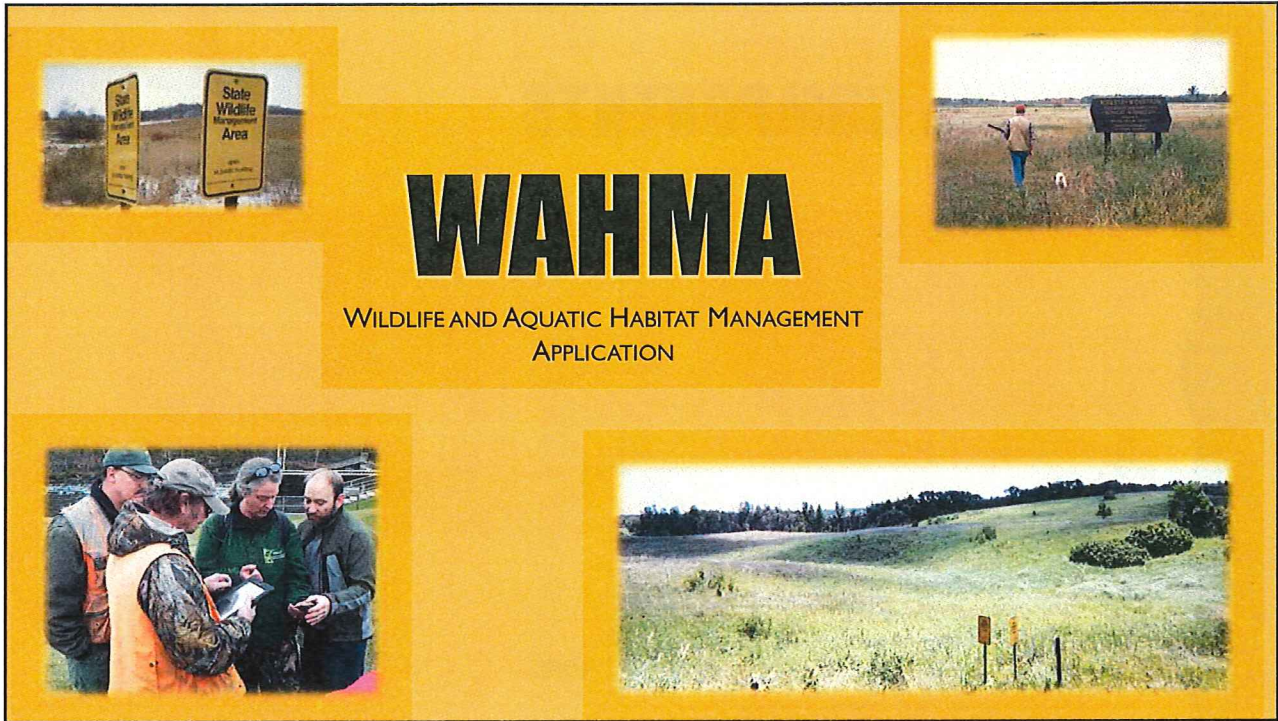
PRESENTER: Pat Rivers, Acting Deputy Director, Division of Fish & Wildlife, MN DNR
 Jami Markle, Assistant Regional Wildlife Manager, Central Region, MN DNR

Background:

At the January 7, 2016 meeting of the council, discussion included DNR's ability to track OHF purchased lands and the management practices used on those lands. LSOHC staff was asked to arrange for MN DNR to present to the council regarding DNR's parcel prioritization process and land management systems.

Suggested Procedure:

Receive information and question the presenters.



WAHMA

WILDLIFE AND AQUATIC HABITAT MANAGEMENT
APPLICATION

PROJECT FOCUS

- Maintain an inventory of the characteristics and condition of all WMAs, AMAs, Wildlife Lakes, and Shallow Lakes
- Propose, Review, Prioritize, and Track Projects on WMAs, AMAs, Wildlife Lakes, and Shallow Lakes to protect, enhance, or restore habitat and clean water
- Record accomplishments and produce reports – including Management Guidance Documents (MGDs)
- Create the ability to estimate deferred obligations



WAHMA COMPONENTS

WAHMAGIS-Mobile

WAHMAGIS-Desktop

WAHMA-Work Planning (WAHMA-WP)



3

WAHMA STATUS DECEMBER 2015

Requirements (ongoing)	Design	Build (Dev)	Test	Production
WAHMA-WP – Propose/Review of projects – 100% Complete				
WAHMAGIS – Mobile and Desktop – Facilities, Land Cover, and Notes – 100% Complete				
WAHMA-WP– Project Management				
WAHMAGIS-Mobile and Desktop -Activities				
Reporting – Public Web products, GDRS outputs				
Reporting				

4