



Lessard-Sams Outdoor Heritage Council

Shallow Lake & Wetland Protection & Restoration Program

ML 2027 Request for Funding

General Information

Date: 06/22/2026

Proposal Title: Shallow Lake & Wetland Protection & Restoration Program

Funds Requested: \$16,995,000

Confirmed Leverage Funds: \$500,000

Is this proposal Scalable?: Yes

Manager Information

Manager's Name: Jon Schneider

Title: Senior Manager of Conservation Programs - Minnesota

Organization: Ducks Unlimited

Address: 311 EAST LAKE GENEVA ROAD NE

City: Alexandria, MN 56308

Email: jschneider@ducks.org

Office Number: 3207629916

Mobile Number: 3208150327

Fax Number:

Website: www.ducks.org

Location Information

County Location(s): Freeborn, Grant, Jackson, Murray, Stevens, Otter Tail, Douglas, Rice, Big Stone, Nicollet, Yellow Medicine, Sibley and Martin.

Eco regions in which work will take place:

Prairie

Activity types:

Protect in Fee

Priority resources addressed by activity:

Wetlands

Prairie

Narrative

Abstract

This request supports Ducks Unlimited's ongoing prairie wetland and grassland acquisition/restoration program. DU proposes to acquire and restore 1,222 acres of land containing drained wetlands and land bordering shallow lakes in Minnesota's Prairie Pothole Region for inclusion in MNDNR state WMAs and USFWS federal WPAs/NWRs. This public land acquisition/restoration program focuses on restoring cropland with drained wetlands near existing WMAs and WPAs/NWRs to help enlarge prairie wetland habitat complexes for breeding ducks, other wildlife, and people. DU biologists and engineers will survey, design, and hire private sector contractors to restore drained wetlands and grasslands.

Design and Scope of Work

This is Phase 16 of Ducks Unlimited's ongoing program to Acquire and Restore prairie pothole wetlands and grasslands adjacent to State Wildlife Management Areas (WMA) and federal Waterfowl Production Areas (WPAs) or National Wildlife Refuges (NWRs). DU works with willing seller private landowners with drained wetlands and converted prairie uplands, and land along shallow lakes in need of protection. DU purchases and temporarily holds land title through our Wetlands America Trust (WAT), DU's supporting land-holding organization, of which DU is the sole corporate member.

Because 90% of Minnesota's prairie wetlands have been drained and 99% of native prairie lost in Minnesota, acquisition and restoration of small wetlands and grasslands is critical – especially for breeding ducks in the Prairie Pothole Region of SW Minnesota where DU focuses our efforts. Furthermore, most remaining undrained wetlands here are in poor ecological condition due to massive landscape prairie conversion to cropland and wetland drainage that degrades both wetland condition and habitat function for prairie wildlife.

Our goal is to help restore functioning prairie-wetland habitat complexes and complement other conservation efforts to protect intact native prairie. Our work addresses the habitat goals in Minnesota's Long-range Duck Recovery Plan, Minnesota's Prairie Conservation Plan, and the North American Waterfowl Management Plan. This work is time-sensitive because farmland adjacent to public lands is rarely offered for sale for conservation, and tracts are only available for a short time. DU works quickly and has spent much of our past OHF appropriations for land acquisition.

Ducks Unlimited works closely with Minnesota DNR Section of Wildlife and U.S. Fish & Wildlife Service to find land parcels for sale, and partners with other NGOs, and local sportsmen clubs to restore lands acquired. Although approval is not requested from county boards for DU land acquisitions, DU communicates frequently with county and township officials to ensure local official awareness of our conservation work and often attends county and township board meetings to discuss projects. The acquisitions and restorations proposed represents the amount of work DU can accomplish over 4-8 years, is scalable, and benefits game and non-game wildlife species alike - from mallards to monarch butterflies.

Although many of our remaining prairie wetlands and shallow lakes are contained within state WMAs or federal WPAs, these small public land patches rarely provide optimal wildlife habitat due to their disconnected, fragmented shape and small size. Similarly, most prairie shallow lakes are surrounded by a thin ribbon of uplands that fail to adequately buffer them from surrounding agricultural land runoff. Therefore, acquisition and restoration of drained wetlands and cultivated cropland in close proximity to our public lands will improve and buffer our public shallow lakes and remaining wetlands and help create functioning prairie-wetland habitat complexes for breeding ducks and other prairie wildlife.

DU professional engineers and biologists work closely with MNDNR and USFWS biologists to plan and implement robust prairie pothole wetland and grassland restorations, including diverse native forb/grass seed plantings and complex wetland restorations that often involve extensive tile and ditch drainage systems.

Explain how the proposal addresses habitat protection, restoration, and/or enhancement for fish, game & wildlife, including threatened or endangered species conservation

Habitat loss is usually the most limiting factor for fish, game, and wildlife - including threatened and endangered species. In Minnesota, we've lost 90% of our prairie pothole wetlands and 99% of our native prairie grasslands. This directly limits populations of waterfowl and other wildlife that rely on prairie wetlands and grasslands for breeding habitat.

This proposal protects and restores wetlands and prairie lands, including native prairie grasslands and small pothole emergent wetlands, both of which are identified as critical habitats for many "Species of Greatest Conservation Need" listed in Minnesota's "Tomorrow's Habitat for the Wild & Rare: An Action Plan for Minnesota Wildlife." Specific species listed in the Action Plan as requiring prairie (page 255) include seven species of butterflies and three bird species that are native prairie specialists: chestnut-collared longspur, Sprague's pipit, and Baird's sparrow. The Prairie Parkland has 139 species listed on the SGCN with 13 of these species being unique to the section.

In addition to these specific wildlife species listed as SGCN examples in the Action Plan, restored prairie in the Prairie Parkland will also provide habitat of significant value for other species listed in Appendix B of the Action Plan. Restored and protected prairie will provide habitat of significant value for other SGCN including bird species: upland sandpiper, bobolink, burrowing owl, Le Conte's sparrow, grasshopper sparrow, eastern meadowlark, swamp sparrow, sharp-tailed grouse, short-eared owl, northern harrier, dickcissel, Henslow's sparrow, and Nelson's sharp-tailed sparrow. Upland nesting waterfowl will also benefit including waterfowl listed as SGCN; northern pintail and lesser scaup, which have both seen declines in continental populations. Wetland associated birds such as trumpeter swan, black tern, American bittern, Wilson's phalarope, and marbled godwit will benefit from wetlands either restored or buffered in the prairie landscape. Mammals such as northern grasshopper mouse and Richardson's ground squirrels, reptiles such as lined snake and Blanding's turtle, and amphibians such as northern cricket frog and common mudpuppy are listed as SGCN for the Prairie Parkland.

What are the elements of this proposal that are critical from a timing perspective?

Most wetlands and nearly all native prairie uplands have been drained and converted for agricultural use in southern Minnesota. Most public prairie wildlife lands are small and fragmented, and do not provide viable productive patches of functioning habitat that support prairie wildlife populations. Thus, acquisition of prairie lands for sale is a key component of our overall Minnesota Prairie Plan conservation efforts to enlarge, restore and protect wildlife habitat. This work is time-sensitive because private land near or adjacent to state WMAs and federal WPA boundaries only rarely becomes available for sale to conservation interests, and thus it is critical to respond quickly to these land acquisition and restoration opportunities when they arise. Most private landowners will wait and work with conservation NGO land buyers for a short time, but won't wait indefinitely for conservation funding, and a generation may pass before these key parcels become available for purchase again.

Describe how the proposal expands habitat corridors or complexes and/or addresses habitat fragmentation:

Ducks Unlimited uses science to strategically focus acquisition of lands adjacent to existing state WMAs with restorable wetlands to build prairie-wetland complexes for breeding ducks or buffer managed shallow lakes. U.S. Fish & Wildlife Service's "Thunderstorm Map" and "Restorable Wetlands Inventory" help determine importance to breeding waterfowl. We prioritize lands with restorable wetlands and prairie in areas of relatively high biological diversity and significance based on the Minnesota DNR County Biological Survey (MCBS) to improve the ecological functionality of existing public WMAs for ducks. Three potential land acquisition examples include:

Minnesota WMA Tract 8 in Jackson County is 136 acres adjacent to an existing WMA and WPA totaling 400 contiguous acres of wetland-grassland habitat. This area is a MCBS Site of Moderate Biodiversity due to abundant native prairie. This parcel would also protect five acres of native prairie and part of a 45-acre wetland of Moderate Biological Significance. It supports 10-25 breeding duck pairs per square mile (PPSM) and falls within a Minnesota Prairie Conservation Plan (MNPCP) Strategic Habitat Complex. There are restorable uplands and numerous restorable wetlands on this property that will increase habitat for breeding waterfowl and other grassland birds.

North Pomme de Terre River WPA is 157 acres in Stevens County to create a new WPA adjoining existing 731-acre Haseman WPA in Grant County to enlarge a natural prairie habitat corridor along the Pomme de Terre River in a landscape supporting 10-25 breeding duck PPSM.

The 200-acre Kensington WPA parcel will more than double the size of protected federal and state protected prairie pothole wetlands and grasslands near a MNPCP Habitat Corridor and Hegg Lake WMA Strategic Complex Area in a landscape capable of supporting 25-40 breeding duck pairs per square mile, and will significantly increase the carrying capacity of the area to support breeding ducks and other prairie birds after it reaches larger functional habitat patch size.

The new 676-acre Stage Road WMA will create a new state WMA in a MNPCP Habitat Corridor and near the Lake Christina Hills Strategic Complex Area that also buffers/protects shoreland of Pelican Lake, an important fishery near Ashby.

Which top 2 Conservation Plans referenced in MS97A.056, subd. 3a are most applicable to this project?

Long Range Duck Recovery Plan

Minnesota Prairie Conservation Plan

Which LSOHC section priorities are addressed in this proposal?

Prairie

Protect, enhance, or restore existing wetland/upland complexes, or convert agricultural lands to new wetland/upland habitat complexes

Describe how this project/program will produce and demonstrate a significant and permanent conservation legacy and/or outcomes for fish, game, and wildlife:

This program will permanently protect and restore prairie and wetlands adjacent to existing state WMAs and federal WPAs and NWRs to increase their size and viability as habitat for wildlife, and lands acquired and restored

will be transferred to the Minnesota DNR for long-term management and public outdoor recreational use. The goal of this work is to create functioning prairie-wetland complexes for breeding and migrating waterfowl and other prairie wildlife species. It has taken over 100 years to fragment the prairie landscape, and it will take a long-term approach to restore wildlife habitat here, piece by piece and prairie wetland complex by complex. Therefore, our work will help add to the significant and permanent conservation legacy for the public, and in the long-term will result in improved and viable habitat patches and complexes for both wildlife and people alike.

If this project/program does not have permanent outcomes, describe why it is important to undertake at this time:

n/a

Outcomes

Programs in prairie region:

Protected, restored, and enhanced shallow lakes and wetlands ~ Land bordering shallow lakes and land containing drained wetlands will be acquired and restored back to native grasslands with prairie pothole wetlands. These restored grasslands with wildflowers surrounding pothole wetlands will provide functioning habitat for pollinators, migratory birds, and resident wildlife. Lands transferred to state and federal wildlife agencies will provide additional habitat for migratory species and public use, both of which will be monitored by MNDNR/USFWS. Lands acquired/restored will be monitored by MNDNR/USFWS wildlife field staff and managed to optimize prairie wildlife habitat conditions. Prairie uplands will be managed to minimize trees and encourage native plants.

Per MS 97A.056, Subd. 24, Please explain whether the request is supplanting or is a substitution for any previous funding that was not from a legacy fund and was used for the same purpose.

This request does not supplant or substitute previous funding. This request is for new land acquisition funding to supplement traditional DU conservation activities and allow DU to expand our conservation program to buy/restore land, and will not supplant or substitute traditional private sources of funding for DU conservation programs.

How will you sustain and/or maintain this work after the Outdoor Heritage Funds are expended?

All lands acquired will be transferred to the Minnesota DNR for inclusion in the state's Wildlife Management Area system or to the U.S. Fish & Wildlife Service for inclusion in the National Wildlife Refuge system (which includes Waterfowl Production Areas). Minnesota DNR and U.S. Fish & Wildlife Service land managers will sustain and maintain the prairie and wetlands acquired and restored by Ducks Unlimited in perpetuity, and manage them to provide optimal wildlife habitat and for public use. Both agencies routinely use prescribed fire and water level management techniques to maintain ecological productivity of prairie grasslands and wetlands for wildlife habitat. Both state WMAs and federal WPAs are open for wildlife habitat compatible public uses, and both agencies maintain public accesses for visitors.

Actions to Maintain Project Outcomes

Year	Source of Funds	Step 1	Step 2	Step 3
2033	DNR G&F Fund and USFWS Wetland Mgt District Budgets	Mow restored prairie for weed control and monitor wetland restorations for restoration response and invasive or woody species	Periodically burn native prairie and small wetlands and/or use managed conservation grazing of livestock every 5 years as needed to maintain prairie and wetland vegetation	Assess and manage water levels in larger restored wetlands as vegetation and ecological conditions warrant management actions and improvement every 5+ years

Provide an assessment of how your program may celebrate cultural diversity or reach diverse communities in Minnesota, including reaching low- and moderate-income households:

Ducks Unlimited conserves wetlands for waterfowl and people alike. Our habitat projects restore natural infrastructure, which helps to alleviate society’s climate impacts and provide clean water for culturally diverse communities and low/moderate income households who are disproportionately impacted by the effects of wetland loss and climate change. This program acquires and restores new public lands for our state Wildlife Management Areas and federal Waterfowl Production Areas that are open and available to all Minnesotans including diverse and low-income people.

Wetlands recharge groundwater in aquifers that provide clean, dependable water supplies while removing pollutants and reducing downstream flooding. Generational wealth in some cultures and communities is compromised by a lack of natural infrastructure such as wetlands. Community resiliency is enhanced by the function of wetlands and adjacent grassland habitats that clean water and help absorb impacts from severe weather events.

Restoring wetlands in the Mississippi River watershed benefits communities who draw their water from the river such as Minneapolis, St. Paul, and St. Cloud. Minneapolis alone draws 21 billion gallons of water a year from the Mississippi River to produce 57 million gallons of drinking water each day.

Public lands and waters also provide numerous opportunities for fishing, hunting, canoeing, kayaking, birding, and outdoor education for diverse and lower-income communities that may not otherwise have access to natural open spaces. Indigenous communities benefit from DU wetland enhancements and restorations that create suitable conditions for wild rice to proliferate. Wetlands deliver a return on investment that support the health, resiliency, and well-being of culturally diverse and lower-income communities.

In this program, Ducks Unlimited works closely with the Minnesota DNR and U.S. Fish & Wildlife Service to strategically purchase lands with drained wetlands and lands bordering shallow lakes that are important to waterfowl, other wildlife, and people too. Ducks Unlimited restores drained pothole wetlands and adjacent uplands back to native prairie grasslands for both wildlife habitat and the public using competitively-selected contractors following state procurement guidelines. These new public lands are open to all for outdoor recreation, community programs, environmental education, including for diverse and lower income people to access nature.

Activity Details

Requirements

Will county board or other local government approval be formally sought prior to acquisition, per 97A.056 subd 13(j)?**

No

Describe any measures to inform local governments of land acquisition under their jurisdiction:

DU notifies and strives to discuss land acquisition plans with counties and townships prior to land acquisition closings. Discussions with local county and other government officials will be held in conjunction with acquiring lands only if and after private land negotiations result in a legal purchase agreement. Initial notification will include initial phone contact to individual board members representing the location of the land to be acquired. Official written notification to township and county boards will be made at least 30 days before closing. Because private land acquisitions are very personal and sensitive matters, especially between private landowners and private non-profit conservation organizations, disclosing details publicly in advance of purchase agreements can jeopardize land deals with private landowners. Because requesting formal local approval involves elected officials publicly voting on private land deals, which invites local politics and makes private landowner intentions public, DU does not seek local government approval of our land acquisitions. Instead, DU contacts and meets with county and township boards in person to inform and discuss pending plans to ensure local government awareness of the public benefits of our land acquisition and restoration work, and changes in future tax payments. DU pays taxes in full at the county assessed rate during our hold time, and because state PILT amounts are typically higher than previous assessed county tax rates for cultivated land acquired by DU in the Prairie Section of SW Minnesota that results in more tax revenue, county boards have usually been pleased with DU land acquisitions for the Minnesota DNR.

Is the land you plan to acquire (fee title) free of any other permanent protection?

No

Describe the permanent protection and justification for additional protection:

Portions of some land tracts may contain some acres under state RIM easement, but the value of those acres will be separated in appraisal valuation and OHF grant funds will not be used to pay for those acres. Some tracts may have federal USFWS Wetland Easements that protect intact wetland basins imbedded within agricultural lands, which prohibits wetland drainage, burning, and filling, but otherwise allowing farming when dry, so the impact on value of most agricultural lands is minimal and the value of these areas will be determined and discussed in the appraisal report.

Land Use

Will there be planting of any crop on OHF land purchased or restored in this program, either by the proposer or the end owner of the property, outside of the initial restoration of the land?

Yes

Explain what will be planted and include the maximum percentage of any acquired parcel that would be planted into foodplots by the proposer or the end owner of the property:

DU purchases land in Minnesota to protect and restore prairie, wetlands, and shallow lake shoreland for ducks and other prairie and wetland-dependent wildlife. Lands acquired will be transferred to the Minnesota DNR and U.S. Fish & Wildlife Service for incorporation into state WMAs and federal WPAs for long-term wildlife habitat management and public use. Initial Development and Restoration Plans are

developed in partnership with Minnesota DNR and USFWS land manager approval according to agency management plan goals. The primary purposes of WMAs and WPAs are to provide habitat for the production of wildlife and provide opportunities for compatible outdoor recreation. To fulfill those goals, DNR may use limited farming specifically to enhance or benefit the management of state lands for resident wildlife, and both DNR and USFWS use farming to prepare land for native prairie grassland restoration.

Lands proposed to be acquired for prairie restoration as WMAs and WPAs may utilize limited farming to prepare previously farmed sites for native plant seeding. This is the standard prairie restoration practice across the Midwest. On a small percentage of WMAs (less than 2.5%), DNR uses farming to provide a winter food source for a variety of wildlife species in agriculture-dominated landscapes largely devoid of winter food sources. DU works closely with DNR through our cooperative acquisition and restoration planning process to minimize purchasing land tracts where DNR requires placement of food plots and instead defers those to DNR to acquire directly, as restoration of prairie and wetlands for waterfowl is our strategic focus and mission. However, some lands may be acquired with some acres where DNR determines food plots are required.

Most lands to be acquired and restored through this program will be farmland with cropped fields, which DU will restore to prairie and wetland habitat. Very limited short-duration row-cropping of soybeans or use of oats as a cover crop, or other farming activity may be required immediately after acquisition prior to restoration via native prairie grass and forb seeding to rid the soil of residual herbicides that limit native plant growth and excess nutrients that promote weeds. Increasingly, farmers are using herbicides with an 18-month carryover residual effect, that requires an additional year of farming with other compatible herbicides before native plants can be seeded. DU strives to minimize this circumstance by working with private landowners to guide their final year of cropping prior to selling, but arranging such is not always possible and use of cover crops or an additional year of "safe" row cropping in soybeans is sometimes required. DU will strive to use non-GMO treated seed if planting of crops is required before land restoration.

Will insecticides or fungicides (including neonicotinoid and fungicide treated seed) be used within any activities of this proposal either in the process of restoration or use as food plots?

No

Is this land currently open for hunting and fishing?

No

Will the land be open for hunting and fishing after completion?

Yes

Describe any variation from the State of Minnesota regulations:

All lands to be acquired are in rural areas and will be included in state Wildlife Management Areas or federal USFWS Waterfowl Production Areas or National Wildlife Refuge, and open to public use as per Minnesota DNR and U.S. Fish & Wildlife Service rules. Whereas all lands acquired for inclusion in federal Waterfowl Production Areas will be open for public hunting as per federal requirements, some lands acquired for National Wildlife Refuges may have limited hunting restrictions, depending on the Refuge.

Who will eventually own the fee title land?

State of MN

Federal

Land acquired in fee will be designated as a:

WMA

National Wildlife Refuge

WPA

AMA

Will new trails or roads be developed or improved, beyond those used for maintenance and management, as a result of the proposed acquisition?

No

Will the land that you acquire (fee or easement) be restored or enhanced within this proposal's funding and availability?

Yes

Previous OHF Appropriations

Have you received OHF dollars through LSOHC for this program or project in the past?

Yes

Are there any of these past appropriations still OPEN?

Yes

If needed, please include any explanation of unspent funds.

Yes, five past appropriations are still open, Minnesota Laws of 2022 - 2026. MN Laws of 2022 - 2025 appropriations are still open for restoration of lands acquired only, and all F-T Land Acquisition budgets have been completely spent - only restoration funding remains as detailed in the table below. MN Laws of 2026 will not open until July 1, 2026 and those funds have yet to be spent, but DU has two purchase agreements in place to spend \$2 million in fall 2026 and we also have several other land purchase deals pending to quickly spend our remaining ML2026 OHF F-T Land Acq grant funds quickly 2027.

Open OHF Appropriations - Data from Most Recent Status Update

Project	Funding Amount Received	Amount Spent to Date	Funding Remaining	% Spent to Date
ML 2026 - Shallow Lake & Wetland Protection & Restoration Program	\$6,005,000	-	\$6,005,000	0.0%
ML 2025 - Shallow Lake & Wetland Protection & Restoration Program - Phase XIV	\$5,673,000	\$4,123,400	\$1,549,600	72.68%
ML 2024 - Shallow Lake & Wetland Protection & Restoration Program - Phase XIII	\$7,670,000	\$6,045,000	\$1,625,000	78.81%
ML 2023 - Shallow Lake & Wetland Protection & Restoration Program - Phase XII	\$7,061,000	\$6,876,000	\$185,000	97.38%
ML 2022 - Shallow Lake & Wetland Protection & Restoration Program - Phase XI	\$4,779,000	\$4,701,800	\$77,200	98.38%
Totals	\$31,188,000	\$21,746,200	\$9,441,800	69.73%

Timeline

Activity Name	Estimated Completion Date
Complete land transfers to Minnesota DNR and USFWS.	June 2032
Complete appraisals, landowner negotiations, and acquisitions of land parcels in fee-title.	June 2031
Complete wetland and prairie grassland restorations.	June 2033

Budget

Totals

Item	Funding Request	Total Leverage	Leverage Source	Total
Personnel	\$880,000	\$210,000	DU Private and Federal NAWCA and USFWS IRA funding, DU Private	\$1,090,000
Contracts	\$3,900,000	\$990,000	Federal NAWCA grant funds	\$4,890,000
Fee Acquisition w/ PILT	\$7,000,000	-	-	\$7,000,000
Fee Acquisition w/o PILT	\$4,000,000	-	-	\$4,000,000
Easement Acquisition	-	\$500,000	Federal USFWS Migratory Bird Conservation Fund (Duck Stamp)	\$500,000
Easement Stewardship	-	-	-	-
Travel	\$72,900	\$900	DU Private for meals (DU does not invoice OHF grants for meals, only mileage/lodging)	\$73,800
Professional Services	\$370,000	-	-	\$370,000
Direct Support Services	\$70,000	-	-	\$70,000
DNR Land Acquisition Costs	\$240,000	-	-	\$240,000
Capital Equipment	-	-	-	-
Other Equipment/Tools	\$60,000	-	-	\$60,000
Supplies/Materials	\$266,000	-	-	\$266,000
DNR IDP	\$136,100	-	-	\$136,100
Grand Total	\$16,995,000	\$1,700,900	-	\$18,695,900

Personnel

Position	Annual FTE	Years Working	Funding Request	Total Leverage	Leverage Source	Total
DU Land Acquisition Manager and Real Estate Specialists - grant administration, land negotiation with private landowners and due diligence, and public land acquisition program coordination with MNDNR and USFWS	0.18	5.0	\$90,000	\$10,000	DU Private	\$100,000
DU Professional Wildlife Biologists and Engineers - survey, design, and restore wetlands and prairie grasslands on new public lands acquired	1.52	5.0	\$790,000	\$200,000	DU Private and Federal NAWCA and USFWS IRA funding	\$990,000

Amount of Request: \$16,995,000

Amount of Leverage: \$1,700,900

Leverage as a percent of the Request: 10.01%

DSS + Personnel: \$950,000

As a % of the total request: 5.59%

Easement Stewardship: -

As a % of the Easement Acquisition: -

Leverage Funding Table

	Leverage Amount Committed	Leverage Amount Confirmed (of Committed Funds)	Leverage Amount Anticipated	Total Leverage
Amount:	\$200,900	\$500,000	\$1,000,000	\$1,700,900
% of Total Leverage:	11.81%	29.4%	58.79%	

N/A

Detail leverage sources and confirmation of funds:

DU will work diligently to use OHF grant funds to leverage additional sources of private support from individuals,

foundations, and corporations and via federal NAWCA grants for specific projects, especially by using OHF grant land acquisition expense to leverage federal NAWCA grants to restore wetlands on lands acquired.

Does this proposal have the ability to be scalable?

Yes

If the project received 50% of the requested funding

Describe how the scaling would affect acres/activities and if not proportionately reduced, why?

The budget in this request will be scaled proportionately to the funding recommended.

Describe how personnel and DSS expenses would be adjusted and if not proportionately reduced, why?

The budget for personnel and DSS in this request will be scaled proportionately to the funding recommended.

If the project received 30% of the requested funding

Describe how the scaling would affect acres/activities and if not proportionately reduced, why?

The budget in this request will be scaled proportionately to the funding recommended.

Describe how personnel and DSS expenses would be adjusted and if not proportionately reduced, why?

This budget for personnel and DSS in this request will be scaled proportionately to the funding recommended.

What other dedicated funds may collaborate with or contribute to this proposal?

Personnel

Has funding for these positions been requested in the past?

Yes

Please explain the overlap of past and future staffing and position levels previously received and how that is coordinated over multiple years?

DU assigns site-specific, unique project numbers to each land acquisition or wetland restoration project, and biologist/engineering staff charge time and expenses to these specific project number codes so charges are tracked to specific sites by each individual. Furthermore, charges are only billed to one OHF grant or another, therefore staff charges can be spread among multiple projects funded by multiple grants. Despite DU staff working on multiple projects and grants throughout the year, DU staff cost invoicing is OHF grant-specific. This allows the DU team of 13 staff working in Minnesota to work on multiple projects throughout the state with multiple OHF grant programs throughout the year.

DU strives to minimize overlap among OHF grants for the same program, and we strive to spend acquisition funds from earlier grants first before more recent grants. Restoration work overlaps by nature, however, due to the time it takes to plan and restore land. Currently, we anticipate spending most past OHF grant fund appropriations along with a significant portion of our newest appropriation, thus we anticipate being largely spent out of OHF land acquisition funding soon.

Contracts

What is included in the contracts line?

Contracts include private contractor charges to restore/enhance wetlands (earthmoving) and grasslands (tree removal, grass seeding, fencing) on lands acquired. Wetland restoration in southern Minnesota is very expensive and requires engineering due to intensive drainage via complex networks of private/public tile/ditches that affect private neighbors and public roads.

Professional Services

What is included in the Professional Services line?

Appraisals

Design/Engineering

Other : Phase 1 Environmental Site Assessments, archeological review/clearance, land acquisition closing costs beyond title and legal fees (such as warranty deed tax), and county or watershed district fees associated with permitting to restore wetlands on legal/judicial public ditches and in watersheds, including county consultant engineering review, fees, etc.

Surveys

Title Insurance and Legal Fees

Fee Acquisition

What is the anticipated number of fee title acquisition transactions?

We anticipate purchasing approximately 12 land tracts in total, including about seven (7) land tracts for Minnesota DNR with OHF grant funds for Fee-title Land Acquisition with PILT (WMAs) and about four (4) land tracts for USFWS as WPAs with OHF grant funds for land in Fee-title Land Acquisition without PILT. This, of course, depends on size, location, and appraised value of lands available for sale from future willing sellers 1-5 years in the future from date of proposal submission. This also assumes the average price is about \$9,000/acre and the average land tract size acquired is about 100 acres. This also assumes that purchase offers for 25-40% of the lands appraised and surveyed are declined by willing sellers or attempts to purchase land at auction fail, as has been our recent past experience.

Travel

Does the amount in the travel line include equipment/vehicle rental?

No

Explain the amount in the travel line outside of traditional travel costs of mileage, food, and lodging

None - DU travel costs consist of in-state mileage and lodging for land manager, biologists, and engineering field staff. DU generally does not request OHF grant reimbursement for food expense.

I understand and agree that lodging, meals, and mileage must comply with the current MMB Commissioner Plan:

Yes

Direct Support Services

How did you determine which portions of the Direct Support Services of your shared support services is direct to this program?

Minnesota DNR grants staff previously reviewed and approved DU accounting methodology for Direct Support Services, which are calculated and included in DU staff costs. DU Direct Support Services constitute approximately 8% of DU overall staff costs on average among DU conservation staff billing categories. DU breaks out and invoices for Direct Support Service expenses approved by DNR for reimbursement separately from Personnel expenses. In accordance with 2 CFR 200, DU uses the direct allocation method of allocating costs to programs and final cost objectives. This process of allocating costs is accomplished through the use of hourly rates. The direct cost of activities, including direct support expenses, is included in these hourly rates. The rates are comprised of costs for salaries, benefits, office space, general insurance, support staff, office supplies, and other various direct expenses incurred at the regional offices and conservation department at the home office. All costs are assigned to conservation projects (net of applicable personnel and other costs that are non-conservation related.) Hourly charges represent the amount that DU charges conservation projects per hour for each staff member working on the project. These costs represent expenses that directly support the labor cost necessary for the development of a specific water/wetlands conservation project.

Other Equipment/Tools

Give examples of the types of Equipment and Tools that will be purchased?

GPS survey equipment for performing engineering wetland restoration topographical survey work and engineering surveys of drained wetlands on land acquired, including GPS survey equipment lease charges for larger main components instead of actual outright equipment purchases to avoid buying expensive technical equipment that becomes obsolete due to upgrades and technological advancements. Other equipment may include laptop and/or tablet computers and other office equipment for biologists or engineers may be needed, along with hand tools and other field equipment as needs arise.

Federal Funds

Do you anticipate federal funds as a match for this program?

Yes

Are the funds confirmed?

Yes

Cash : \$500,000

Is Confirmation Document attached?

Yes, on file

Output Tables

Acres by Resource Type (Table 1)

Type	Wetland	Prairie	Forest	Habitat	Total Acres
Restore	0	0	0	0	0
Protect in Fee with State PILT Liability	194	583	0	0	777
Protect in Fee w/o State PILT Liability	112	333	0	0	445
Protect in Easement	0	0	0	0	0
Enhance	0	0	0	0	0
Total	306	916	0	0	1,222

Restoration/Enhancement Acres of OHF Acquired Lands (Table 1a.1)

	RESTORE: Lands acquired in this proposal	RESTORE: Lands acquired with previous OHF appropriations (<5yrs old)	RESTORE Total	ENHANCE: Lands acquired in this proposal	ENHANCE: Lands acquired with previous OHF appropriations (<5yrs old)	ENHANCE Total
Protect in Fee with State PILT Liability	777	0	777	0	0	0
Protect in Fee w/o State PILT Liability	445	0	445	0	0	0
Protect in Easement	-	-	-	-	-	-
Total	1,222	0	1,222	0	0	0

Restoration/Enhancement Acres Breakdown of Existing Protected Lands (Table 1a.2)

	RESTORE: Lands acquired with OHF	RESTORE: Lands NOT acquired with OHF	ENHANCE: Lands acquired with OHF	ENHANCE: Lands NOT acquired with OHF
DNR Lands (WMA, State Forests, etc.)	0	0	0	0
Non-DNR Lands (city, state, federal, etc.)	0	0	0	0
Easements	0	0	0	0
Total	0	0	0	0

Total Requested Funding by Resource Type (Table 2)

Type	Wetland	Prairie	Forest	Habitat	Total Funding
Restore	-	-	-	-	-
Protect in Fee with State PILT Liability	\$2,701,500	\$8,104,600	-	-	\$10,806,100
Protect in Fee w/o State PILT Liability	\$1,547,200	\$4,641,700	-	-	\$6,188,900
Protect in Easement	-	-	-	-	-
Enhance	-	-	-	-	-
Total	\$4,248,700	\$12,746,300	-	-	\$16,995,000

Acres within each Ecological Section (Table 3)

Type	Metro/Urban	Forest/Prairie	SE Forest	Prairie	N. Forest	Total Acres
Restore	0	0	0	0	0	0
Protect in Fee with State PILT Liability	0	0	0	777	0	777
Protect in Fee w/o State PILT Liability	0	0	0	445	0	445
Protect in Easement	0	0	0	0	0	0
Enhance	0	0	0	0	0	0
Total	0	0	0	1,222	0	1,222

Total Requested Funding within each Ecological Section (Table 4)

Type	Metro/Urban	Forest/Prairie	SE Forest	Prairie	N. Forest	Total Funding
Restore	-	-	-	-	-	-
Protect in Fee with State PILT Liability	-	-	-	\$10,806,100	-	\$10,806,100
Protect in Fee w/o State PILT Liability	-	-	-	\$6,188,900	-	\$6,188,900
Protect in Easement	-	-	-	-	-	-
Enhance	-	-	-	-	-	-
Total	-	-	-	\$16,995,000	-	\$16,995,000

Average Cost per Acre by Resource Type (Table 5)

Type	Wetland	Prairie	Forest	Habitat
Restore	-	-	-	-
Protect in Fee with State PILT Liability	\$13,925	\$13,901	-	-
Protect in Fee w/o State PILT Liability	\$13,814	\$13,939	-	-
Protect in Easement	-	-	-	-
Enhance	-	-	-	-

Average Cost per Acre by Ecological Section (Table 6)

Type	Metro/Urban	Forest/Prairie	SE Forest	Prairie	N. Forest
Restore	-	-	-	-	-
Protect in Fee with State PILT Liability	-	-	-	\$13,907	-
Protect in Fee w/o State PILT Liability	-	-	-	\$13,907	-
Protect in Easement	-	-	-	-	-
Enhance	-	-	-	-	-

Target Lake/Stream/River Feet or Miles

Parcels

Sign-up Criteria?

No

Explain the process used to identify, prioritize, and select the parcels on your list:

Ducks Unlimited prioritizes purchase of prairie farmland with restorable wetlands adjacent to existing public lands, and land adjacent to shallow lakes managed by DNR for inclusion in the Minnesota DNR’s state Wildlife Management Area (WMA) system and federal Wildlife Refuge System, including Waterfowl Production Areas. DU focuses on acquiring and restoring converted/cultivated prairie with drained wetlands adjacent to existing WMAs to enlarge existing WMAs to create functioning prairie-wetland habitat complexes that benefit ducks and other prairie wildlife. This work also complements other conservation efforts to protect intact native prairie.

DU works in close partnership with the Minnesota DNR Section of Wildlife and U.S. Fish & Wildlife Service regarding land acquisition opportunities, and coordinates with other national and state NGO partners including Pheasants Forever, The Conservation Fund, and The Nature Conservancy to periodically review parcels for sale that DNR desires for WMAs. DU pursues priority parcels in the Prairie Pothole Region in southern and western Minnesota that are highly regionally ranked by DNR/USFWS that add a good mix of prairie and wetland restorations to existing public lands.

DU strategically prioritizes tracts of land with restorable wetlands that DU wetland engineers can survey, design, and restore, especially those adjoining existing patches of prairie and wetland habitat that are not functioning as viable prairie-wetland complexes due to their small size and fragmented shape. DU also prioritizes land bordering shallow lakes managed by DNR in order to buffer those shallow, ecologically-sensitive wildlife lakes and help expand existing prairie-wetland complexes.

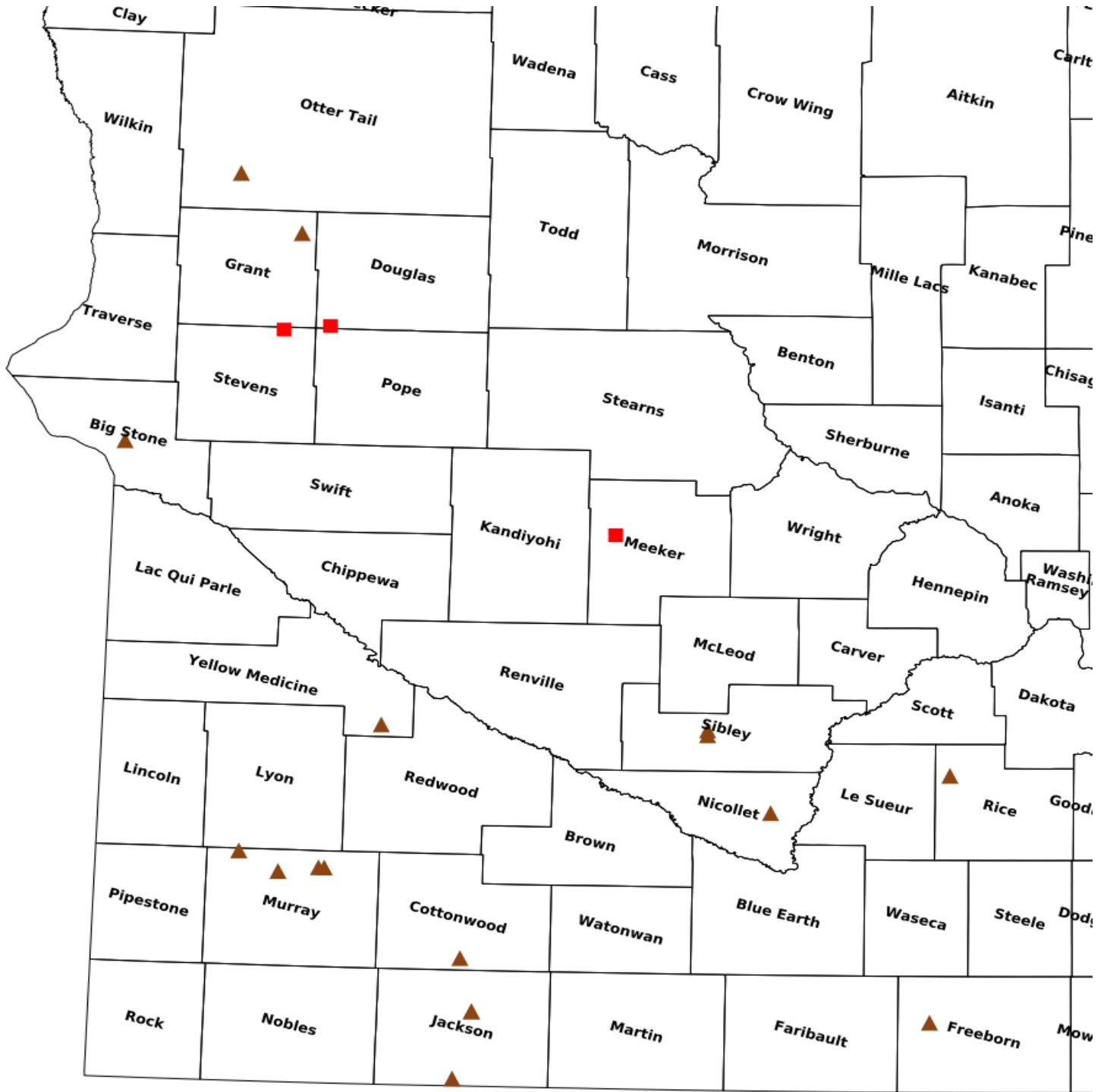
Protect in Fee Parcels

Name	County	TRDS	Acres	Est Cost	Existing Protection
Kensington WPA - Wagner Farm	Douglas	12740233	200	\$1,200,000	No
Freeborn Lake WMA	Freeborn	10323224	113	\$500,000	No
Stage Road WMA - Tracts 1 - 11	Grant	13041227	676	\$3,500,000	Yes
Minneota WMA - Tract 8	Jackson	10136229	136	\$820,000	No
String Lakes WMA - Tract 8	Jackson	10536221	104	\$800,000	No
Two Sheds WMA - Tract 21 Klassen	Jackson	10336214	160	\$1,600,000	No
Two Sheds WMA - Tract 3 Gordon	Jackson	10336214	80	\$700,000	No
Holmes Lake WPA	Martin	12032235	94	\$1,000,000	No
Shetek WMA - Tract 2/2a Ackerman	Murray	10840221	261	\$2,500,000	No
Shetek WMA - Tract 9 Ackerman	Murray	10840220	109	\$1,900,000	No
Skandia WMA - Tract 33	Murray	10841230	80	\$500,000	No
Swan Lake WMA - SLAWA Tract	Nicollet	11027217	140	\$2,100,000	No
Valdine WMA - Tracts 2 & 8	Otter Tail	13243226	160	\$700,000	Yes
Phelps Lake WMA Tract 21B	Rice	11122204	80	\$700,000	No
Indian Lake WMA - Tract 10	Sibley	11329228	67	\$500,000	No
Indian Lake WMA - Tract 9a	Sibley	11329221	50	\$500,000	No
North Pomme de Terre River WPA	Stevens	12641206	157	\$600,000	No
Posen WMA - Tract 7a	Yellow Medicine	11338219	18	\$150,000	No

Protect Parcels with Buildings

Name	County	TRDS	Acres	Est Cost	Existing Protection	Buildings	Value of Buildings
Thielke Lake WMA - Tract 4	Big Stone	12246203	130	\$900,000	No	1	\$50,000
Nelson WMA - Tract 10 VAL Trust	Murray	10843201	198	\$1,700,000	No	4	\$5,000

Parcel Map



- Protect in Easement
- ▲ Protect in Fee with PILT
- Protect in Fee W/O PILT
- ★ Restore
- ✕ Enhance
- ⊕ Other

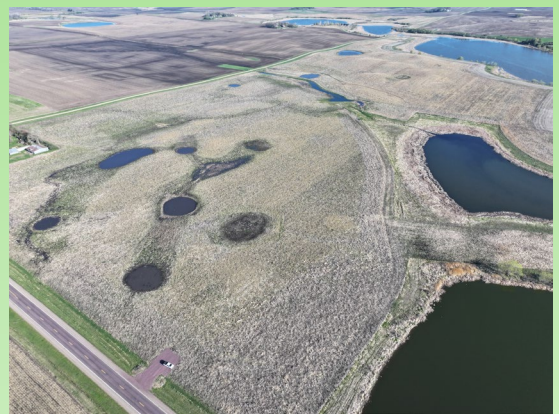
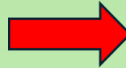


SHALLOW LAKE & WETLAND PROTECTION & RESTORATION PROGRAM - PHASE XVI

Proposal Request: \$16,995,000

Proposal Leverage: \$1,700,900 (10%)

Proposal Abstract: This request supports Ducks Unlimited's ongoing prairie wetland and grassland acquisition/restoration program. DU proposes to acquire (and restore) 1,222 acres of new land containing drained wetlands and land bordering shallow lakes in Minnesota's Prairie Pothole Region for inclusion in MNDNR state WMAs and USFWS federal WPAs/NWRs. This public land acquisition/restoration program focuses on restoring cropland with drained wetlands near existing WMAs and WPAs/NWRs to help enlarge prairie wetland habitat complexes for breeding ducks, other wildlife, and people. DU biologists and engineers will survey, design, and hire private sector contractors to restore drained wetlands and grasslands.



SHALLOW LAKE & WETLAND PROTECTION & RESTORATION PROGRAM - PHASE XVI

