



## Lessard-Sams Outdoor Heritage Council

Enhanced Public Land - Grasslands - Phase X

ML 2027 Request for Funding

---

### General Information

**Date:** 06/22/2026

**Proposal Title:** Enhanced Public Land - Grasslands - Phase X

**Funds Requested:** \$8,681,700

**Confirmed Leverage Funds:** -

**Is this proposal Scalable?:** Yes

### Manager Information

**Manager's Name:** Sabin Adams

**Title:** MN State Coordinator

**Organization:** Pheasants Forever

**Address:** 1783 Buerkle Circle

**City:** St. Paul, MN 55110

**Email:** sadams@pheasantsforever.org

**Office Number:** 320-250-6317

**Mobile Number:** 3202506317

**Fax Number:**

**Website:** www.pheasantsforever.org

### Location Information

**County Location(s):** Marshall, Douglas, Clay, Lac qui Parle, Cottonwood, Nobles, Yellow Medicine, Grant, Stevens, Lincoln, Becker, Blue Earth, Jackson, Traverse, Sibley, Watonwan, Pope, Murray, Chisago, Otter Tail, Wilkin, Rock, Lake of the Woods, Polk, Roseau, Mower, Martin, Mahnommen, Redwood, Todd, Swift, Kandiyohi, Wright, Chippewa, Faribault, Carver, Meeker, Fillmore, Renville, Freeborn and Big Stone.

### Eco regions in which work will take place:

Forest / Prairie Transition

Metro / Urban

Prairie

### Activity types:

Restore

Enhance

**Priority resources addressed by activity:**

Prairie

Wetlands

**Narrative**

**Abstract**

In this phase of the Enhanced Public Lands - Grassland program, Pheasants Forever (PF) will enhance or restore 6,000 acres of upland and wetland habitat. The goal of this program is to improve habitat on existing WMAs, WPAs, SNAs, and National Wildlife Refuges (NWRs) that are open to public hunting. PF does this by working with agency partners to develop restoration and enhancement plans and hiring local, private contractors to complete work. Examples of habitat improvements include restoring wetlands, removing invasive trees, conducting conservation grazing, and seeding grasslands with high-diversity native seed mixes.

**Design and Scope of Work**

Grassland-wetland ecosystems require regular disturbance to preserve their functionality and quality to positively impact fish, wildlife, and the public. Lack of disturbance on native and restored prairies has resulted in degraded habitats characterized by low plant diversity, presence of non-native or invasive species, and the spread of voluntary trees into open prairie. Wetlands embedded in these grasslands require restoration to achieve their fullest functionality, or have structures that need repair. The Minnesota Prairie Conservation Plan (MPCP) identifies restoration and enhancement as two strategies to combat these issues. In accordance with this plan, Pheasants Forever has created the Enhanced Public Lands - Grasslands program to restore and enhance grassland and wetland habitats on existing WMAs, SNAs, WPAs, and NWRs (many of which were purchased in sub-optimal conditions) in the prairie, forest/prairie transition, and metro regions. Pheasants Forever will utilize a previously developed Request for Proposals (RFP) and process to evaluate projects submitted by agency partners.

Restoration and enhancement activities include the following:

- 1) Wetland restoration/enhancement: Tools used to accomplish this include removing drain tile, constructing/repairing earthen dams and/or water control structures, removing sediment and invasive narrow leaf cattail control. Wetlands targeted for enhancement are vital to providing food, cover, and the space required for breeding waterfowl while being essential to and landscape resiliency in the face of climate change.
- 2) Upland Enhancement: We will use a site-specific combination of techniques (e.g. cultivation, tree removal, herbicide, and prescribed fire) to bring back productivity to these public lands. In close collaboration with the land managers, we will seed a diverse mix of native grasses and forbs that are well adapted to site conditions and are ideal for upland nesting bird production and success of pollinator species. Mowing will be used as needed to manage annual weed pressure to ensure establishment.
- 3) Prescribed burning: This is the primary tool for managing grassland habitat as it is cost effective, increases vigor by removing built up litter, and sets back invasive woody species.
- 4) Conservation Grazing: This is an important enhancement tool for sites that are difficult to conduct prescribed fires or need to target specific enhancement needs (e.g. cool season grass suppression, tree invasion, etc.). Permanent infrastructure with a lifespan of 30+ years will be installed to conduct conservation grazing plans written to benefit wildlife.
- 5) Tree Removal: Research has shown that invasive trees are detrimental to prairie/grassland wildlife and thus will be removed with this proposal. These trees reduce nesting success by providing perches for aerial predators, dens for mammalian predators, and increases predator efficiency by creating habitat edges and fragmenting

habitat. Predators are highly effective at predating both nests and nesting birds, especially in fragmented low quality habitat.

Restoring or enhancing habitat to its highest function in these areas will not only greatly benefit fish and wildlife populations, but also reduce future management costs (by creating robust, better self-regulating ecosystems), and improve the enjoyment of the area by the public.

**Explain how the proposal addresses habitat protection, restoration, and/or enhancement for fish, game & wildlife, including threatened or endangered species conservation**

In line with the goals of the MPCP, this program directly addresses the loss of quality habitat on reconstructed and native prairies through restoration and enhancement best practices. By increasing the quality of existing remnant and reconstructed prairie habitat we benefit numerous species that are of special concern, threatened, or endangered. This proposal targets grassland species, including but not limited to, greater prairie chickens, ring-necked pheasants, monarch butterflies, honey bees and Dakota skippers.

**What are the elements of this proposal that are critical from a timing perspective?**

Without frequent disturbance grasslands naturally degrade over time. This phenomenon is termed grassland succession. As grassland succession progresses, the cost to correct it increases. This program allows PF to consistently enhance public lands at maximum capacity for the benefit of wildlife and the public.

**Describe how the proposal expands habitat corridors or complexes and/or addresses habitat fragmentation:**

This proposal improves habitat within corridors and complexes which increases their usability by wildlife. For instance, large expanses of low-quality habitat provide little value to wildlife species who are not generalist, effectively reducing the size of the complex. Enhancing and restoring habitat within these complexes increases the usable area for a greater number of species. A characteristic of low-quality habitat is an increase in habitat edges, which is a type of habitat fragmentation. Rows of trees, and drastic changes in vegetative cover (e.g. visible transition from a stand of smooth brome to Kentucky bluegrass) create edges for predators to navigate and increases their efficiency when hunting. By removing trees and restoring grasslands to high-diversity mixes of grasses and forbs, we reduce the amount of habitat fragmentation within the greater complex.

**Which top 2 Conservation Plans referenced in MS97A.056, subd. 3a are most applicable to this project?**

Long Range Plan for the Ring-Necked Pheasant in MN

Minnesota Prairie Conservation Plan

**Which LSOHC section priorities are addressed in this proposal?**

**Forest / Prairie Transition**

Protect, enhance, and restore migratory habitat for waterfowl and related species, so as to increase migratory and breeding success

**Metro / Urban**

Protect, enhance, and restore remnant native prairie, Big Woods forests, and oak savanna with an emphasis on areas with high biological diversity

**Prairie**

Restore or enhance habitat on public lands

**Describe how this project/program will produce and demonstrate a significant and permanent conservation legacy and/or outcomes for fish, game, and wildlife:**

Enhancements and restorations completed under this program significantly increase the quality of habitat for game birds and other wildlife on public lands in the prairie, forest/prairie transition, and metro regions. Many of the properties were purchased in sub-optimal condition with limited funds, preventing restoration efforts that would have resulted in fully functional ecosystems. This program sets these properties on a trajectory to provide high quality habitat for wildlife and improve enjoyment for all public land users.

**If this project/program does not have permanent outcomes, describe why it is important to undertake at this time:**

**Outcomes**

**Programs in forest-prairie transition region:**

Increased waterfowl and upland bird migratory and breeding success ~ *Outcomes will be measured by resource professionals and evaluated by using the best science available to land managers.*

**Programs in metropolitan urbanizing region:**

Other ~ *Outcomes will be measured by resource professionals and evaluated by using the best science available to land managers.*

**Programs in prairie region:**

Improved condition of habitat on public lands ~ *Outcomes will be measured by resource professionals and evaluated by using the best science available to land managers.*

**Per MS 97A.056, Subd. 24, Please explain whether the request is supplanting or is a substitution for any previous funding that was not from a legacy fund and was used for the same purpose.**

This proposal supplements past investments and is focused on accelerating the protection and restoration of strategically selected parcels.

**How will you sustain and/or maintain this work after the Outdoor Heritage Funds are expended?**

The enhancements completed under this phase will generally allow the unit to be managed more effectively by either the USFWS or MNDNR. Limited station/area funds, constant pressure from invasive species (i.e. grasses, forbs, and trees), water quality decline, aging grasslands, climate change and other factors increase the difficulty of maintaining these enhancements; therefore, we expect continued opportunity to supplement local agency efforts. While it's difficult for a third party like PF to provide an analysis of future costs on existing public land, according to the Long-Range Budget Analysis of Land Management Needs, the cost of long-term management ranges from \$11-16/acre annually. We expect the average need to be the same for the parcels enhanced or restored under this program.

**Actions to Maintain Project Outcomes**

Year	Source of Funds	Step 1	Step 2	Step 3
Post Project Completion - WMA	MN DNR - Game and Fish Funds	Monitoring	Maintience	-
Post Project Completion - WPA	USFWS - Federal	Monitoring	Maintience	-
Post Project Completion - NWR	USFWS - Federal	Monitoring	Maintience	-

**Provide an assessment of how your program may celebrate cultural diversity or reach diverse communities in Minnesota, including reaching low- and moderate-income households:**

The goal of this program is to enhance and restore wildlife habitat on public lands open to all Minnesotans, regardless of cultural background or fiscal standing. WPAs, WMAs, and NRWs eligible for this program are free and open to access by all. This program spans all of the Prairie, Forest-Prairie, and Metro regions. Some acquisitions will be nearby areas with diverse or low-income communities. This program engages with everyone who wants to participate in public lands and the outdoors.

**Activity Details**

**Requirements**

**Will restoration and enhancement work follow best management practices including MS 84.973 Pollinator Habitat Program?**

Yes

**Is the restoration and enhancement activity on permanently protected land per 97A.056, Subd 13(f), tribal lands, and/or public waters per MS 103G.005, Subd. 15 or on lands to be acquired in this program?**

Yes

**Where does the activity take place?**

WMA

WPA

Refuge Lands

SNA

**Land Use**

**Will there be planting of any crop on OHF land purchased or restored in this program, either by the proposer or the end owner of the property, outside of the initial restoration of the land?**

No

**Will insecticides or fungicides (including neonicotinoid and fungicide treated seed) be used within any activities of this proposal either in the process of restoration or use as food plots?**

No

**Previous OHF Appropriations**

**Have you received OHF dollars through LSOHC for this program or project in the past?**

Yes

**Are there any of these past appropriations still OPEN?**

Yes

**If needed, please include any explanation of unspent funds.**

EPLG ML25 has \$105,439 obligated in signed contracts. EPLG ML24, \$267,091 is obligated in signed contracts. EPLG ML23 all but \$5,632.53 of the remaining funds are obligated in signed contracts. For ML24 and ML25 all but \$123,521 is either obligated in signed contracts or have been awarded to projects. The remaining funds will be set aside as a buffer in the event projects overrun expected budgets.

**Open OHF Appropriations - Data from Most Recent Status Update**

Project	Funding Amount Received	Amount Spent to Date	Funding Remaining	% Spent to Date
ML 2025 - Enhanced Public Land - Grasslands - Phase VIII	\$3,440,000	\$800	\$3,439,200	0.02%
ML 2024 - Enhanced Public Land - Grasslands - Phase VII	\$1,902,000	\$82,600	\$1,819,400	4.34%
ML 2023 - Enhanced Public Land - Grasslands - Phase VI	\$2,772,000	\$2,215,600	\$556,400	79.93%
<b>Totals</b>	<b>\$8,114,000</b>	<b>\$2,299,000</b>	<b>\$5,815,000</b>	<b>28.33%</b>

**Timeline**

Activity Name	Estimated Completion Date
Distribute project Request for Proposals (RFP) to area land managers	9/1/2027
Review project RFP's with project selection committee	11/30/2027
Select projects for completion and hire contractors to complete habitat work	1/31/2028
Enhancement/restoration work begins	5/31/2028
Re-evaluate project status/budget and solicit additional projects as needed	12/31/2028
Complete all enhancement/restoration work	6/30/2032

**Budget**

**Totals**

Item	Funding Request	Total Leverage	Leverage Source	Total
Personnel	\$560,000	-	-	\$560,000
Contracts	\$7,200,000	\$200,000	PF/State/Federal	\$7,400,000
Fee Acquisition w/ PILT	-	-	-	-
Fee Acquisition w/o PILT	-	-	-	-
Easement Acquisition	-	-	-	-
Easement Stewardship	-	-	-	-
Travel	\$30,000	-	-	\$30,000
Professional Services	-	-	-	-
Direct Support Services	\$251,700	\$251,700	PF	\$503,400
DNR Land Acquisition Costs	-	-	-	-
Capital Equipment	-	-	-	-
Other Equipment/Tools	-	-	-	-
Supplies/Materials	\$600,000	-	-	\$600,000
DNR IDP	\$40,000	-	-	\$40,000
<b>Grand Total</b>	<b>\$8,681,700</b>	<b>\$451,700</b>	-	<b>\$9,133,400</b>

**Personnel**

Position	Annual FTE	Years Working	Funding Request	Total Leverage	Leverage Source	Total
PF Field Staff	0.87	5.0	\$525,000	-	-	\$525,000
PF Grant Staff	0.1	5.0	\$35,000	-	-	\$35,000

**Amount of Request:** \$8,681,700

**Amount of Leverage:** \$451,700

**Leverage as a percent of the Request:** 5.2%

**DSS + Personnel:** \$811,700

**As a % of the total request:** 9.35%

**Easement Stewardship:** -

**As a % of the Easement Acquisition:** -

**Leverage Funding Table**

	Leverage Amount Committed	Leverage Amount Confirmed (of Committed Funds)	Leverage Amount Anticipated	Total Leverage
Amount:	\$251,700	-	\$200,000	\$451,700
% of Total Leverage:	55.72%	0.0%	44.28%	

N/A

**Detail leverage sources and confirmation of funds:**

Leverage is expected from multiple sources including but not limited to federal sources, land value donations, contractor donations and PF. Not every source is 100% confirmed at this point. However, PF has an exemplary track record of delivery and over-achievement of match commitments that further stretch OHF funding.

**Does this proposal have the ability to be scalable?**

Yes

**If the project received 50% of the requested funding**

**Describe how the scaling would affect acres/activities and if not proportionately reduced, why?**

This proposal's budget at 100% of the request is based on the average acres that are enhanced and restored per appropriation. If this project is reduced by 50% we would scale down all acres/activities and dollars amounts proportionately.

**Describe how personnel and DSS expenses would be adjusted and if not proportionately reduced, why?**

Personnel and DSS will be scaled down proportionately.

**If the project received 30% of the requested funding**

**Describe how the scaling would affect acres/activities and if not proportionately reduced, why?**

If this project is reduced by 70% we would scale down all acres/activities and dollars amounts proportionately.

**Describe how personnel and DSS expenses would be adjusted and if not proportionately reduced, why?**

Personnel and DSS will be scaled down proportionately.

**What other dedicated funds may collaborate with or contribute to this proposal?**

**Personnel**

**Has funding for these positions been requested in the past?**

Yes

**Please explain the overlap of past and future staffing and position levels previously received and how that is coordinated over multiple years?**

In general PF staffing is existing and only partially funded by OHF and specifically this request. Billing to any appropriation would only be for time spent on direct and necessary costs incurred as outlined in an Accomplishment Plan.

**Contracts**

**What is included in the contracts line?**

We anticipate that all of the contract funding will be used for restoration and enhancement activities.

**Travel**

**Does the amount in the travel line include equipment/vehicle rental?**

No

**Explain the amount in the travel line outside of traditional travel costs of mileage, food, and lodging**

NA

**I understand and agree that lodging, meals, and mileage must comply with the current MMB Commissioner Plan:**

Yes

## Direct Support Services

### **How did you determine which portions of the Direct Support Services of your shared support services is direct to this program?**

PF utilizes the Total Modified Direct Cost method. This methodology is annually approved by the U.S. Department of Interior's National Business Center as the basis for the organization's Indirect Cost Rate Agreement. PF's allowable direct support services cost is 15%. In this proposal, PF has discounted its rate to 2.5% of the sum of personnel, contracts, professional services, and travel. We are donating the difference-in-kind.

## Federal Funds

### **Do you anticipate federal funds as a match for this program?**

Yes

#### **Are the funds confirmed?**

No

#### **What is the approximate date you anticipate receiving confirmation of the federal funds?**

7/1/2029

**Output Tables**

**Acres by Resource Type (Table 1)**

Type	Wetland	Prairie	Forest	Habitat	Total Acres
Restore	600	0	0	0	600
Protect in Fee with State PILT Liability	0	0	0	0	0
Protect in Fee w/o State PILT Liability	0	0	0	0	0
Protect in Easement	0	0	0	0	0
Enhance	0	5,400	0	0	5,400
<b>Total</b>	<b>600</b>	<b>5,400</b>	<b>0</b>	<b>0</b>	<b>6,000</b>

**Restoration/Enhancement Acres Breakdown of Existing Protected Lands (Table 1a.2)**

	RESTORE: Lands acquired with OHF	RESTORE: Lands NOT acquired with OHF	ENHANCE: Lands acquired with OHF	ENHANCE: Lands NOT acquired with OHF
DNR Lands (WMA, State Forests, etc.)	-	300	-	2,700
Non-DNR Lands (city, state, federal, etc.)	-	300	-	2,700
Easements	-	-	-	-
<b>Total</b>	<b>-</b>	<b>600</b>	<b>-</b>	<b>5,400</b>

**Total Requested Funding by Resource Type (Table 2)**

Type	Wetland	Prairie	Forest	Habitat	Total Funding
Restore	\$868,200	-	-	-	\$868,200
Protect in Fee with State PILT Liability	-	-	-	-	-
Protect in Fee w/o State PILT Liability	-	-	-	-	-
Protect in Easement	-	-	-	-	-
Enhance	-	\$7,813,500	-	-	\$7,813,500
<b>Total</b>	<b>\$868,200</b>	<b>\$7,813,500</b>	<b>-</b>	<b>-</b>	<b>\$8,681,700</b>

**Acres within each Ecological Section (Table 3)**

Type	Metro/Urban	Forest/Prairie	SE Forest	Prairie	N. Forest	Total Acres
Restore	60	180	0	360	0	600
Protect in Fee with State PILT Liability	0	0	0	0	0	0
Protect in Fee w/o State PILT Liability	0	0	0	0	0	0
Protect in Easement	0	0	0	0	0	0
Enhance	540	1,620	0	3,240	0	5,400
<b>Total</b>	<b>600</b>	<b>1,800</b>	<b>0</b>	<b>3,600</b>	<b>0</b>	<b>6,000</b>

**Total Requested Funding within each Ecological Section (Table 4)**

Type	Metro/Urban	Forest/Prairie	SE Forest	Prairie	N. Forest	Total Funding
Restore	\$86,800	\$260,500	-	\$520,900	-	\$868,200
Protect in Fee with State PILT Liability	-	-	-	-	-	-
Protect in Fee w/o State PILT Liability	-	-	-	-	-	-
Protect in Easement	-	-	-	-	-	-
Enhance	\$781,400	\$2,344,100	-	\$4,688,000	-	\$7,813,500
<b>Total</b>	<b>\$868,200</b>	<b>\$2,604,600</b>	<b>-</b>	<b>\$5,208,900</b>	<b>-</b>	<b>\$8,681,700</b>

**Average Cost per Acre by Resource Type (Table 5)**

Type	Wetland	Prairie	Forest	Habitat
Restore	\$1,447	-	-	-
Protect in Fee with State PILT Liability	-	-	-	-
Protect in Fee w/o State PILT Liability	-	-	-	-
Protect in Easement	-	-	-	-
Enhance	-	\$1,446	-	-

**Average Cost per Acre by Ecological Section (Table 6)**

Type	Metro/Urban	Forest/Prairie	SE Forest	Prairie	N. Forest
Restore	\$1,446	\$1,447	-	\$1,446	-
Protect in Fee with State PILT Liability	-	-	-	-	-
Protect in Fee w/o State PILT Liability	-	-	-	-	-
Protect in Easement	-	-	-	-	-
Enhance	\$1,447	\$1,446	-	\$1,446	-

**Target Lake/Stream/River Feet or Miles**

Parcels

**Sign-up Criteria?**

No

**Explain the process used to identify, prioritize, and select the parcels on your list:**

Requests for proposals will be sent to MN public land managers and PF chapters within the prairie, prairie/forest transition, and metro regions. PF evaluates projects based on proximity to and size habitat complex, benefit to T/E and SGCN, and alignment with existing conservation plans. Projects will be accepted until all funds have been spent.

**Restore / Enhance Parcels**

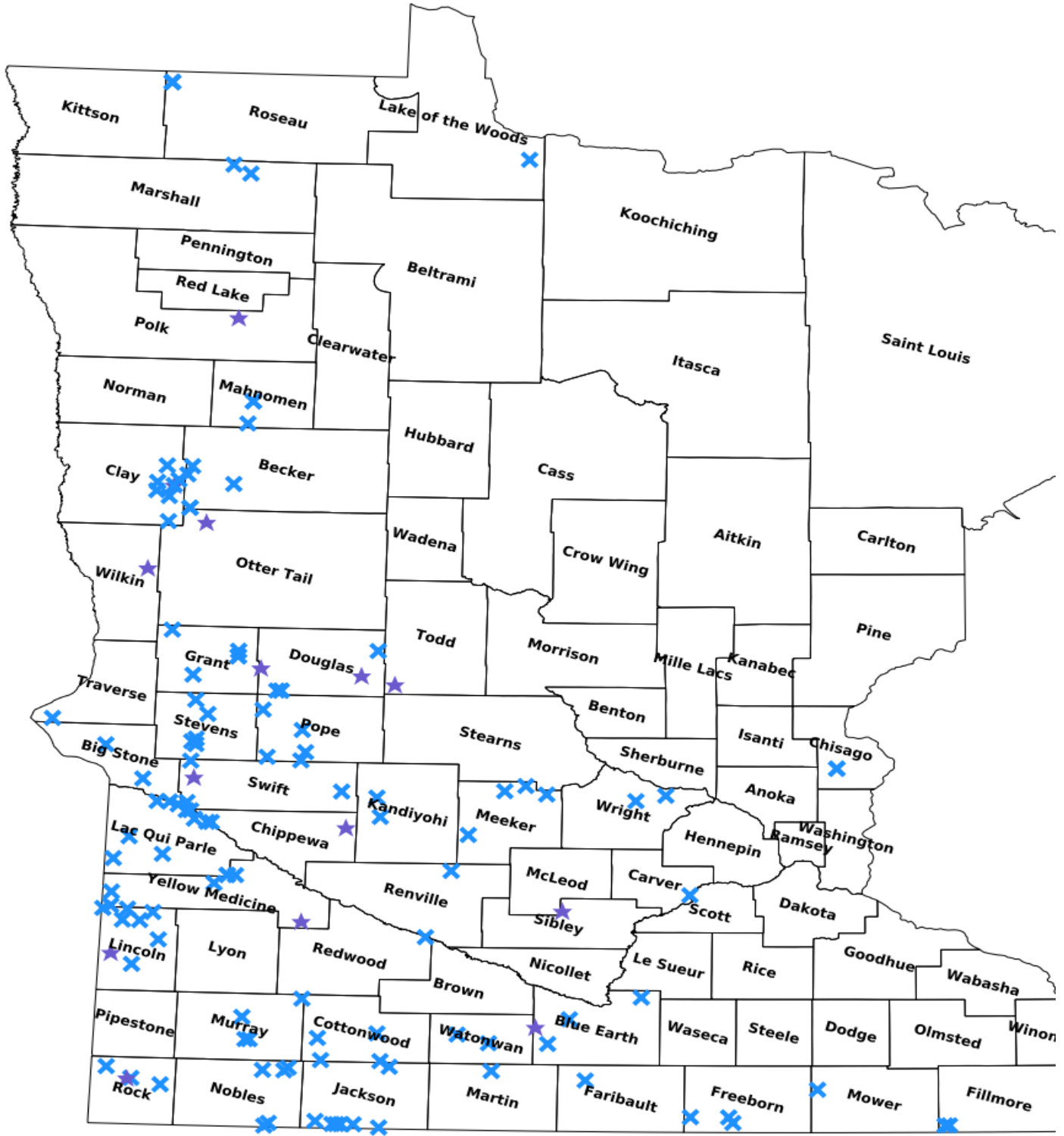
Name	County	TRDS	Acres	Est Cost	Existing Protection	Description
Arneson WPA	Becker	13942213	1	\$2,573	Yes	Brush Mowing/Shearing
Larson WPA	Becker	13843232	93	\$70,000	Yes	Conservation Grazing
Larson WPA	Becker	13843232	3	\$18,500	Yes	Tree Removal
Marks WPA	Becker	14043217	48	\$75,500	Yes	Tree Removal
Stinking Lake WPA	Becker	14043231	2	\$18,000	Yes	Tree Removal
Hillman WPA	Big Stone	12145210	75	\$50,000	Yes	Conservation Grazing, Tree Removal,
Karsky WPA	Big Stone	12346207	68	\$17,550	Yes	Tree Removal
Evans Slough WMA	Blue Earth	10629227	100	\$25,310	Yes	Tree Removal
Gilfillan Lake WMA	Blue Earth	10925232	195	\$7,500	Yes	Tree Removal
Howard Farm WPA	Blue Earth	10728209	400	\$12,000	Yes	Tree Removal
Pauley WPA	Blue Earth	10729230	35	\$33,501	Yes	Wetland, Upland Restoration WITHOUT seed, Tree Removal
Rapids Lake North NWR	Carver	11523230	300	\$9,000	Yes	Tree Removal
Cuka WMA	Chippewa	11937234	114	\$36,424	Yes	Wetland
Carlos Avery WMA	Chisago	03421226	60	\$165,000	Yes	Tree Removal
Carlos Avery WMA	Chisago	03421226	60	\$165,000	Yes	Tree Removal
Carlson WPA	Clay	13945213	31	\$34,108	Yes	Tree Removal
Christiansen WPA	Clay	13844209	12	\$40,348	Yes	Conservation Grazing
Doran Lake WPA	Clay	13945236	135	\$35,257	Yes	Conservation Grazing
Haugtvedt WPA	Clay	13744228	42	\$68,954	Yes	Conservation Grazing
Hoykens WPA	Clay	14044217	269	\$7,720	Yes	Brush Mowing/Shearing
Olson WPA	Clay	13944211	38	\$31,500	Yes	Brush Mowing/Shearing
Rushfeldt WPA	Clay	13944222	46	\$79,026	Yes	Wetland
Rushfeldt WPA1	Clay	13944222	30	\$320,321	Yes	Tree Removal, Brush Mowing/Shearing, Conservation Grazing
Clear Lake WPA	Cottonwood	10538235	302	\$37,875	Yes	Conservation Grazing
Long Lake WPA	Cottonwood	10638222	106	\$28,116	Yes	Diversity Seeding
Swan Lake WPA	Cottonwood	10636212	149	\$29,175	Yes	Conservation Grazing
Wolf Lake WPA	Cottonwood	10535231	71	\$150,000	Yes	Tree Removal
Ellingson WPA	Douglas	12840218	28	\$32,500	Yes	Tree Removal, Wetland,
Hegg Lake WMA	Douglas	12740226	7	\$35,000	Yes	Tree Removal
Peterson WPA	Douglas	12836230	9	\$182,000	Yes	Wetland Restoration, Tree Removal,
Roger Holmes WMA	Douglas	12936211	475	\$224,323	Yes	Conservation Grazing, Prescribed Fire, Diversity Seeding
Sabolik WPA	Douglas	12740225	16	\$60,000	Yes	Tree Removal
Thompson WPA	Douglas	12740225	17	\$80,000	Yes	Tree Removal
Rice Lake WMA	Faribault	10427231	95	\$55,000	Yes	Tree Removal

Beaver Creek WMA	Fillmore	10113221	27	\$19,717	Yes	Diversity Seeding
Beaver Creek WMA	Fillmore	10113220	275	\$112,520	Yes	Tree Removal, 112520,
Goose Creek WPA	Freeborn	10122213	75	\$130,000	Yes	Tree Removal, Upland Restoration,
Mansfield WMA	Freeborn	10123205	76	\$80,000	Yes	Diversity Seeding
Twin Lake WPA	Freeborn	10122202	37	\$90,000	Yes	Diversity Seeding, Tree Removal,
Berskow WMA	Grant	12941217	7	\$32,500	Yes	Tree Removal
Blakesly WMA	Grant	12843233	3	\$15,000	Yes	Tree Removal
Jenson WMA	Grant	12941229	72	\$28,800	Yes	Tree Removal
Jenson WMA	Grant	12941229	72	\$28,800	Yes	Tree Removal
Kube Swift WMA: West Unit	Grant	13044210	8	\$40,000	Yes	Tree Removal
Christiania WPA	Jackson	10435209	165	\$105,000	Yes	Tree Removal
Howard K. Vincent WPA	Jackson	10135231	185	\$77,322	Yes	Upland Restoration
Illinois Lake WMA	Jackson	10138222	70	\$30,000	Yes	Tree Removal
Little Sioux River WPA	Jackson	10136230	182	\$5,460	Yes	Tree Removal
Sioux Valley WMA	Jackson	10137228	13	\$30,000	Yes	Tree Removal
Skunk Creek WPA - CCM	Jackson	10137229	1	\$36	Yes	Tree Removal
Skunk Lake WMA	Jackson	10137227	171	\$40,000	Yes	Tree Removal
Gopher Ridge WMA	Kandiyohi	11936212	5	\$16,010	Yes	Wetland
Shakopee Creek WPA	Kandiyohi	12036202	55	\$250,000	Yes	Tree Removal
Flinks Slough WMA	Lac qui Parle	11642236	53	\$62,000	Yes	Tree Removal, Upland Restoration,
Flinks WMA	Lac qui Parle	11642236	62	\$178,925	Yes	Upland Restoration, Tree Removal, Seed Purchase
Hamlin WMA	Lac qui Parle	11744228	19	\$25,000	Yes	Upland Restoration
Hastad WPA (North-W1/2W1/2)	Lac qui Parle	11943205	230	\$29,900	Yes	Tree Removal
Hegland WPA	Lac qui Parle	11943204	88	\$16,080	Yes	Tree Removal
Lac Qui Parle WMA- Louisburg	Lac qui Parle	12044222	77	\$47,000	Yes	Tree Removal
Lac qui Parle WMA, Engebretson Tract	Lac qui Parle	11942229	612	\$140,000	Yes	Tree Removal
Lac qui Parle WMA, Hamre Tract	Lac qui Parle	11942230	227	\$200,000	Yes	Tree Removal,
Lac qui Parle WMA, Nygard Tract	Lac qui Parle	12044225	15	\$49,500	Yes	Tree Removal, 49500,
Lac qui Parle WMA, Shelstad Tract	Lac qui Parle	11943222	17	\$27,000	Yes	Upland Restoration, 23000, 3
Lac qui Parle WMA, Simonson Soderberg Tract	Lac qui Parle	12044219	236	\$178,100	Yes	Tree Removal, 169000, 7
NE Four Corners WMA	Lac qui Parle	11845230	20	\$27,000	Yes	Upland Restoration
Taylor WPA	Lac qui Parle	11646204	77	\$15,500	Yes	Tree Removal
Morris Mow- LOW State Forest	Lake of the Woods	15930221	35	\$29,279	Yes	Brush Mowing
Archerville WMA	Lincoln	11345206	184	\$220,800	Yes	Tree Removal
Collinson WMA	Lincoln	11045217	50	\$114,000	Yes	Tree Removal
Kragh Farms WPA	Lincoln	11146228	8	\$124,290	Yes	Wetland, Tree Removal,
Minnkota WMA	Lincoln	11346206	135	\$45,700	Yes	Fencing
Richard Doerer WMA	Lincoln	11346225	70	\$25,000	Yes	Tree Removal
Rook WPA	Lincoln	11345227	162	\$45,000	Yes	Conservation Grazing, Tree Removal,
Rost WMA	Lincoln	11244232	100	\$60,000	Yes	Tree Removal
Vista Prairie WMA	Lincoln	11344207	25	\$20,000	Yes	Tree Removal

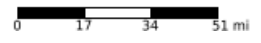
Sandy Lake WPA	Mahnomen	14441215	106	\$50,000	Yes	Tree Removal
Sandy Lake WPA	Mahnomen	14441215	60	\$65,000	Yes	Conservation Grazing
Squirrel Lake WPA	Mahnomen	14341228	50	\$83,000	Yes	Tree Removal
Thief Lake WMA- Lakeshore Burn Units	Marshall	15841228	121	\$96,300	Yes	Prescribed Fire
Thief Lake WMA- Savanna Units	Marshall	15842211	181	\$109,800	Yes	Prescribed Fire, Prescribed Fire, Prescribed Fire
Gleam WMA	Martin	10431216	77	\$40,000	Yes	Tree Removal
Clear Lake WPA	Meeker	12130210	8	\$120,000	Yes	Tree Removal
Kingston WMA	Meeker	12129228	200	\$100,000	Yes	Tree Removal
Rosendale WPA	Meeker	11832209	36	\$50,000	Yes	Upland Restoration, Seed Purchase,
Tyrone Flats WPA	Meeker	12131223	40	\$48,000	Yes	Upland Restoration
Schamber WPA	Mower	10318217	30	\$85,000	Yes	Tree Removal
5-Mile Corner WPA	Murray	10741215	135	\$60,000	Yes	Tree Removal
Big Slough WPA	Murray	10641225	335	\$40,250	Yes	Conservation Grazing
Big Slough WPA	Murray	10641226	63	\$40,000	Yes	Tree Removal
Pell Creek NWR	Murray	10839212	73	\$25,000	Yes	Tree Removal
Graham Lake WPA	Nobles	10439220	15	\$20,000	Yes	Tree Removal
Lake Bella WMA	Nobles	10140234	17	\$500	Yes	Tree Removal
Lone Tree WMA	Nobles	10440221	34	\$15,000	Yes	Tree Removal, 15000,
Watcher WMA	Nobles	10140226	9	\$3,000	Yes	Tree Removal, 3000,
West Graham WMA	Nobles	10439216	192	\$20,000	Yes	Tree Removal
Putnam WPA (Tingelstad tract)	Otter Tail	13743225	115	\$115,300	Yes	Upland Restoration
Clarke WPA	Polk	14941218	71	\$300,000	Yes	Wetland Restoration
Benson Lake WPA	Pope	12339213	28	\$9,800	Yes	Tree Removal
Chippewa River WMA	Pope	12340228	24	\$297,500	Yes	Wetland Restoration, Tree Removal, Diversity Enhancement
Froland WPA	Pope	12439202	40	\$12,000	Yes	Tree Removal
Gust Prairie NTGP (South)	Pope	12640232	103	\$15,725	Yes	Tree Removal
Hoffman (NTGP)	Pope	12339235	70	\$13,650	Yes	Tree Removal
Cedar Mountain WMA	Redwood	11234214	130	\$13,500	Yes	Diversity Seeding, Tree Removal,
Cream City WPA	Renville	11633214	215	\$258,000	Yes	Upland Restoration, Tree Removal,
Bartels NWR	Rock	10446220	58	\$23,312	Yes	Conservation Grazing
Champepadan Creek NWR	Rock	10344221	1	\$7,000	Yes	Tree Removal
Touch the Sky Prairie NWR	Rock	10345208	187	\$42,425	Yes	Conservation Grazing
Touch the Sky Prairie NWR1	Rock	10345207	125	\$126,825	Yes	Upland Restoration, Tree Removal,
Roseau River WMA	Roseau	16344217	259	\$59,570	Yes	Brush Mowing/Shearing
Roseau River WMA	Roseau	16344217	259	\$59,570	Yes	Brush Mowing/Shearing
Roseau River WMA	Roseau	16344217	259	\$59,570	Yes	Brush Mowing/Shearing
Roseau River WMA	Roseau	16344217	259	\$59,570	Yes	Brush Mowing/Shearing
High Island WPA2	Sibley	11428230	132	\$134,400	Yes	Upland Restoration, Wetland,
Alberta WMA: North Unit	Stevens	12443233	28	\$12,000	Yes	Tree Removal
Alberta WMA: South East Unit	Stevens	12343203	8	\$40,000	Yes	Tree Removal
Kill WPA	Stevens	12643215	40	\$5,000	Yes	Tree Removal
Mathison WMA	Stevens	12443227	5	\$22,500	Yes	Tree Removal
Miller WPA	Stevens	12542207	50	\$15,050	Yes	Tree Removal
Bengtson WPA	Swift	12137228	130	\$44,850	Yes	Tree Removal
Lac Qui Parle WMA- Szabo	Swift	12043220	300	\$60,250	Yes	Tree Removal
Lubenow WPA	Swift	12143203	2	\$5,000	Yes	Wetland
Spring Lake WPA	Swift	12243204	115	\$19,000	Yes	Tree Removal

West Union WMA	Todd	12735209	73	\$200,000	Yes	Tree Removal, Upland Restoration,
Metz WMA: East Unit	Traverse	12548230	4	\$17,500	Yes	Tree Removal
Curry WMA	Watowan	10632207	13	\$7,265	Yes	Tree Removal
Rosendale WMA	Watowan	10631229	17	\$20,000	Yes	Tree Removal
Akron WMA	Wilkin	13445222	20	\$30,000	Yes	Upland Restoration
Angus Lake WPA	Wright	12026201	114	\$253,052	Yes	Upland Restoration, Tree Removal, Seed Purchase
Pelican Lake WPA	Wright	12124230	105	\$159,750	Yes	Tree Removal
Bohemian Marshes WMA	Yellow Medicine	11446233	231	\$91,000	Yes	Tree Removal, Prescribed Fire, Upland Restoration
Dakota WPA	Yellow Medicine	11446204	35	\$65,000	Yes	Tree Removal, Conservation Grazing,
Posen WMA	Yellow Medicine	11339224	16	\$16,400	Yes	Upland Restoration
Stony Run WMA	Yellow Medicine	11641232	80	\$54,000	Yes	Tree Removal
Tyro WMA	Yellow Medicine	11542216	95	\$30,000	Yes	Tree Removal

### Parcel Map



- Protect in Easement
- ▲ Protect in Fee with PILT
- Protect in Fee W/O PILT
- ★ Restore
- ✕ Enhance
- ⊕ Other





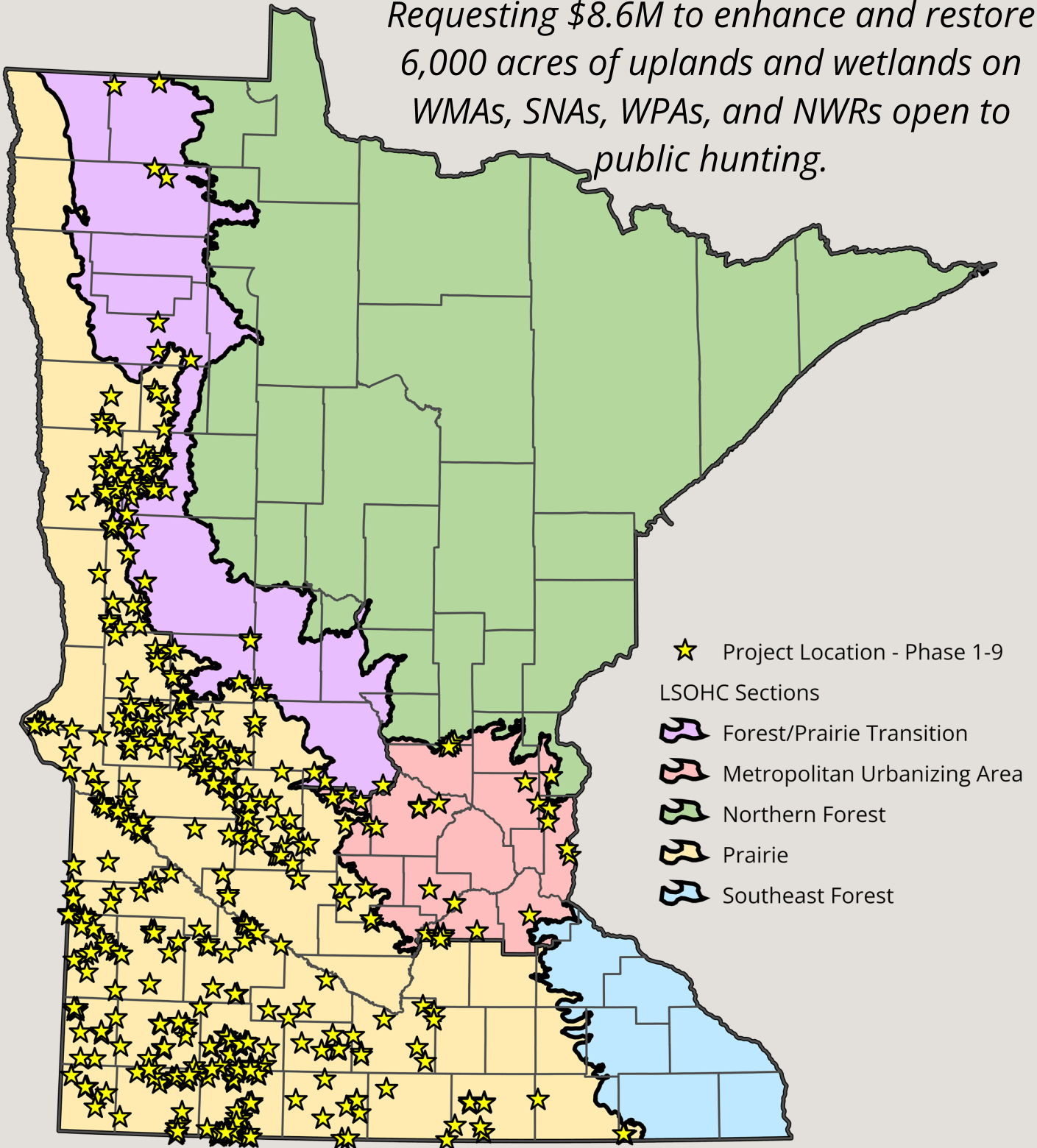
PHEASANTS  
FOREVER



# Enhanced Public Lands

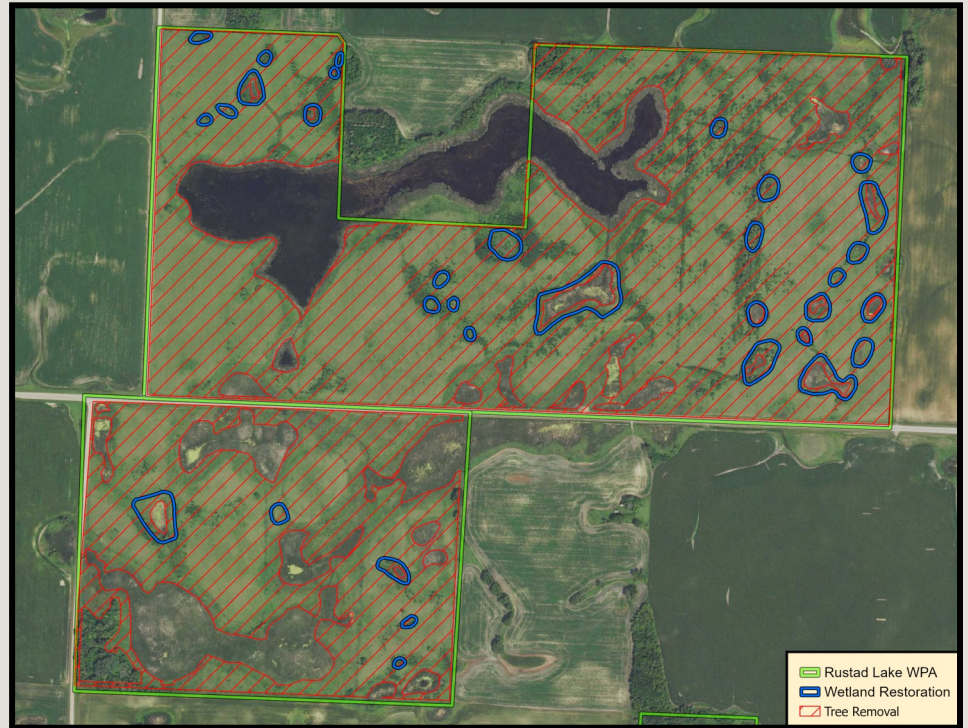
## Grasslands Phase X

*Requesting \$8.6M to enhance and restore  
6,000 acres of uplands and wetlands on  
WMAs, SNAs, WPAs, and NWRs open to  
public hunting.*



# Rustad Lake WPA Tree Removal & Wetland Restoration

The Rustad Lake WPA is 406 acres and located in Clay county. The goal with this restoration and enhancement project was to complete multiple activities at the same time to increase the overall ecological value, improve habitat quality, and manage tree encroachment through grazing.



**Wetlands Before**

We completed 100 acres of tree removal in and restored 33 wetlands for 18 wetland acres in 2025 using funds from phase IV (ML23/FY24).

To facilitate maintenance of the vegetative community through grazing, wildlife-friendly fence is contracted to be installed in 2026 for the entire 406 acres.



**Wetlands After**