



Lessard-Sams Outdoor Heritage Council

Anoka Sand Plain Habitat Enhancement and Restoration - Phase 11
ML 2027 Request for Funding

General Information

Date: 06/22/2026

Proposal Title: Anoka Sand Plain Habitat Enhancement and Restoration - Phase 11

Funds Requested: \$5,502,000

Confirmed Leverage Funds: -

Is this proposal Scalable?: Yes

Manager Information

Manager's Name: Wiley Buck

Title: Senior Program Manager

Organization: Great River Greening

Address: 251 Starkey Street Ste 2200

City: Saint Paul, MN 55107

Email: wbuck@greatrivergreening.org

Office Number: 651-272-3981

Mobile Number: 651-318-8667

Fax Number:

Website: greatrivergreening.org

Location Information

County Location(s): Sherburne, Isanti, Chisago and Anoka.

Eco regions in which work will take place:

Metro / Urban

Activity types:

Enhance

Priority resources addressed by activity:

Wetlands

Prairie

Forest

Habitat

Narrative

Abstract

The Anoka Sand Plain (ASP) Partnership will enhance 1,221 acres of Prairie/Oak Savanna, Wetland, Habitat, and Woodland/Forest at sites in the Anoka Sand Plain ecoregion and its watersheds. Our actions will increase biodiversity, habitat connectivity and quality, recreational opportunities, and landscape resilience, which align with the ASP Partnership's 10-year Strategic Conservation Action Plan, DNR Wildlife Action Plan and LSOHC Section priorities. Great River Greening (GRG) and Anoka Conservation District (ACD) are direct recipients, with match from LGUs, USFWS, and private sources.

Design and Scope of Work

The ASP Partnership overall long-term project boundary is defined by the DNR's ASP ecological subsection plus its intersecting minor watersheds, which captures portions of the Metropolitan Urbanizing, Forest/Prairie Transition, and Northern Forest LSOHC sections. Our overall long-term project area is a marvelously complex mosaic of habitats, home to quality prairie, savanna, wetlands, fire-dependent forests and woodlands, large habitat cores, designated wild and scenic rivers, and a high concentration of rare species. The amount of high-quality remnant habitat in the ASP is remarkable given its proximity to the Twin Cities and St. Cloud urban cores. While the location of the ASP provides easy access for the majority of Minnesotans, the associated stressors - invasive species, development pressure, and conversion - threaten its sustainability. The need for continuing and accelerating conservation action here is urgent.

In this phase, we are proposing to enhance parcels in the Metropolitan Urbanizing LSOHC section because of the high impact opportunities that are present at this time.

The diversity in this rich and important habitat mosaic, complemented by its close proximity to most Minnesotans, is reflected in the number and diversity of organizations that identify the area as a priority, combining our specific knowledge and stakeholder engagement to join forces for its conservation. The robust ASP Partnership is committed to protecting, restoring, and enhancing this spectacular region so it can continue to provide vital habitat, invaluable ecological services, and high-quality recreational and engagement opportunities. The science-based ASP Partnership's 10-year Strategic Plan was created to identify priority habitats, opportunities, centers of biodiversity, and a plan of action with measurable goals. This provides guidance to prioritize actions for our work in Phase 11.

With this funding, Restoration and Enhancement partners Great River Greening (GRG) and Anoka Conservation District (ACD) will complete enhancement on over 1,200 protected acres. Habitats include prairie/savanna grasslands, woodlands and forest, and wetlands. This mosaic of natural resources enhanced in this reflects the mosaic of natural communities in the Anoka Sand Plain. We maintain our emphasized focus on the guild of rare plant species known to occur in high concentrations in specific wetland fringe soils and communities found primarily in Minnesota's Anoka Sand Plain ecoregion, both through the Rare Plant Rescue program, and rare plant enhancement in several parcels.

Results will be achieved by conducting invasive species and woody encroachment removal, prescribed burning, thinning, seeding, and planting. Our program will create and improve critical habitat for rare species and Species in Greatest Conservation Need (SGCN) by increasing biodiversity and landscape resilience, with a particular focus on rare plants that have their highest concentration in the Anoka Sand Plan. This work will also benefit water quality

and quantity, improve community resiliency, and increase recreational opportunities including community engagement in the R/E process, while addressing and planning for climate change.

Explain how the proposal addresses habitat protection, restoration, and/or enhancement for fish, game & wildlife, including threatened or endangered species conservation

The Anoka Sand Plain serves as a refuge for many globally unique species and rare plant communities, including roughly one-third of Minnesota's listed rare plant and animals, and 97 known or predicted Species in Greatest Conservation Need (SGCN), and 131 federally or state endangered, threatened, or special concern. The Minnesota Biological Survey (MBS) ranks 72,000 acres in the ASP as Outstanding or High Biodiversity. This proposal addresses LSOHC and Minnesota Wildlife Action Plan (WAP) priorities by enhancing oak savanna, prairie, riparian, woodlands, and non-forested wetlands.

We will complete enhancement on 527 acres of prairie/savanna grasslands; 167 acres of wetlands, and 525 forest/woodland acres. Over 700 of these acres across six sites have documented rare species present and our proposed enhancements are established practices for increasing these populations.

Furthermore, we will maintain our emphasized focus on the guild of rare plant species known to occur in high concentrations in specific wetland fringe soils and communities found primarily in Minnesota's Anoka Sand Plain ecoregion, both through the Rare Plant Rescue program, as well as rare plant habitat enhancement in several parcels. We anticipate rescuing 8-20 rare plant populations totaling 1,000-10,000 plants and transplanting them into protected suitable habitat, and enhancing over 250 acres with documented rare plant populations found primarily in Minnesota's Anoka Sand Plain, where our evaluation has indicated a very high likelihood of increasing these existing populations several fold.

What are the elements of this proposal that are critical from a timing perspective?

The amount of high quality remnant habitat in the ASP is remarkable given its proximity to Twin Cities Metropolitan and St. Cloud areas. While the location of the ASP provides easy access for the majority of Minnesotans, the associated stressors threaten the ASP's sustainability. The ecological diversity of the ASP is threatened by invasive species and development pressure. State-wide growth through 2045 is projected at 7% while projected growth in Anoka and Sherburne counties is 14% and 24% respectively. Restoration and enhancement efforts will prevent habitat degradation and increase biodiversity. The rare plant rescue program is underway with existing appropriations and is in pressing need for additional funding to continue to rescue plants from development site and transplant them into protected and enhanced recipient sites. ASP11 will help address the urgent need for suitable recipient sites via enhancement.

Describe how the proposal expands habitat corridors or complexes and/or addresses habitat fragmentation:

The ASP Partnership 10-Year Conservation Strategic Plan utilizes multiple-criteria GIS analyses to identify and prioritize critical areas for habitat connectivity, SGCN, biodiversity, and native plant communities. Data layers include: 1. Top 95% of SGCN population composite 2. Good or excellent populations of state or federally endangered and threatened species 3. Richness hotspots falling outside the top 95% of populations 4. Marxan outputs from the Scientific and Natural Area strategic plan 5. Sites of Biodiversity Significance that intersect with Marxan outputs 6. Native plant communities: Minnesota Department of Natural Resources – Division of Ecological and Water Resources – Biological Survey. MNDNR Native Plant Communities. 2014.

The sites and conservation actions included in this proposal will combat the threats of habitat fragmentation,

degradation and invasive species and improve habitat cores. These items were identified in state Wildlife Action Plan, Statewide Conservation and Preservation Plan (SCPP), and Outdoor Heritage Fund: A 25-Year Framework as the priority actions needed to address significant challenges facing SGCN and landscape resilience in the ASP region. The Anoka Sand Plain has been identified as a Conservation Opportunity Area in the 2025-2035 Minnesota Statewide Action Plan.

The Anoka Sand Plain Partnership project area is remarkable in containing 4 large, protected habitat cores, and large riparian corridors including the Mississippi River and Rum River, portions of which are designated as Wild & Scenic.

Which top 2 Conservation Plans referenced in MS97A.056, subd. 3a are most applicable to this project?

Minnesota's Wildlife Action Plan 2015-2025

Outdoor Heritage Fund: A 25 Year Framework

Which LSOHC section priorities are addressed in this proposal?

Metro / Urban

Protect, enhance, and restore remnant native prairie, Big Woods forests, and oak savanna with an emphasis on areas with high biological diversity

Describe how this project/program will produce and demonstrate a significant and permanent conservation legacy and/or outcomes for fish, game, and wildlife:

The Anoka Sand Plain partnership has worked to protect, restore, and enhance key areas to ensure that, along with growth and other threats, this region continues to be a resilient, functioning landscape that provides high-quality habitat for fish, game and non-game wildlife, and rare plants and plant communities. With past funds, our partnership has protected 1084 acres and restored/enhanced 12,762 acres in this unique ecological region and has buffered high quality habitat cores and expanded habitat corridors, and another 1600 acres underway. With this funding we will continue to increase the number of acres of enhanced habitats to reduce habitat fragmentation, degradation and invasive species which threaten SGCN, landscape resilience, and outdoor recreation opportunities.

If this project/program does not have permanent outcomes, describe why it is important to undertake at this time:

N/A

Outcomes

Programs in metropolitan urbanizing region:

Core areas protected with highly biologically diverse wetlands and plant communities, including native prairie, Big Woods, and oak savanna ~ *Perform ecological monitoring using DNR protocol and evaluate data; adapt management when and where needed. Record number of acres protected of high quality habitat on private lands, which buffer public lands and expand habitat cores and corridors; and number of acres of key habitat successfully restored / enhanced. Map project sites and periodically perform GIS analysis to help quantify impact on habitat cores and corridors.*

Per MS 97A.056, Subd. 24, Please explain whether the request is supplanting or is a substitution for any previous funding that was not from a legacy fund and was used for the same purpose.

This proposal to LSOHC for Outdoor Heritage Fund support does not supplant any other sources of funds. In all cases, this proposal and the projects to be completed accelerate regional habitat work in the Anoka Sand Plain.

How will you sustain and/or maintain this work after the Outdoor Heritage Funds are expended?

The ASP Partnership is committed to working with respective land management agencies, owners, and conservation organizations in an on-going basis to identify and procure financial resources for maintaining these improvements as needed.

For R/E on existing protected land, site-specific resource management plans will be developed/adopted to guide effective long-term management. All land managers benefitting from R/E and rare plant recipient sites must commit to the long-term maintenance of these sites. A principle management goal is to elevate each R/E site prior to grant close to a threshold where on-going management cost is diminished. For sites and programs that use volunteers, community volunteer engagement promotes an increase in community stakeholders.

Actions to Maintain Project Outcomes

Year	Source of Funds	Step 1	Step 2	Step 3
2031	GRG in-kind	Monitoring every 2-3 years	Landowner Engagement	-
2031	USFWS in-kind	Rx Burning	Spot herbicide treatment	-
2031	ACD Anoka Agriculture Preserves	Monitor every 2-3 years	Spot treatment	Overseeding
2031	Anoka County Parks	Spot herbicide treatment and spot mowing and biocontrol	Prescribed burn every 3-5 years	Overseeding

Provide an assessment of how your program may celebrate cultural diversity or reach diverse communities in Minnesota, including reaching low- and moderate-income households:

ASP Partners have existing DEIJ initiatives including Future Stewards Program (GRG), and 'Engaging a Diverse Public in Stewardship' funded by Environment and Natural Resources Trust Fund (GRG) and others. Partners will continue to connect all our DEIJ programs and resources to ASP11 projects when appropriate opportunities arise. ASP ecoregion provides close-to-home recreation opportunities for the majority of Minnesotans. This includes large BIPOC and low-income populations areas as identified by the MPCA environmental justice tool. Furthermore, the ASP encompasses a priority Drinking Water Supply Management Area, attributable to groundwater recharge through sandy soils and the miles of Mississippi River upstream of the Twin Cities drinking water intakes. Through the land-water connection of our projects, we will contribute to water quality, quantity, and security for all, including urban core and rural populations.

Activity Details

Requirements

Will restoration and enhancement work follow best management practices including MS 84.973 Pollinator Habitat Program?

Yes

Is the restoration and enhancement activity on permanently protected land per 97A.056, Subd 13(f), tribal lands, and/or public waters per MS 103G.005, Subd. 15 or on lands to be acquired in this program?

Yes

Where does the activity take place?

WMA

County/Municipal

Other : U of M's Cedar Creek Ecosystem Science Reserve

Public Waters

Refuge Lands

Land Use

Will there be planting of any crop on OHF land purchased or restored in this program, either by the proposer or the end owner of the property, outside of the initial restoration of the land?

No

Will insecticides or fungicides (including neonicotinoid and fungicide treated seed) be used within any activities of this proposal either in the process of restoration or use as food plots?

No

Previous OHF Appropriations

Have you received OHF dollars through LSOHC for this program or project in the past?

Yes

Are there any of these past appropriations still OPEN?

Yes

If needed, please include any explanation of unspent funds.

Unspent funds include encumbered subcontracts that are not yet complete. In ASP9, a 210K invoice is being submitted in May, 2026

Open OHF Appropriations - Data from Most Recent Status Update

Project	Funding Amount Received	Amount Spent to Date	Funding Remaining	% Spent to Date
ML 2025 - Anoka Sand Plain Habitat Conservation - Phase 10	\$3,518,000	\$87,000	\$3,431,000	2.47%
ML 2024 - Anoka Sand Plain Habitat Conservation - Phase 9	\$1,802,000	\$57,000	\$1,745,000	3.16%
ML 2023 - Anoka Sand Plain Habitat Conservation - Phase 8	\$3,269,000	\$1,818,000	\$1,451,000	55.61%
ML 2021 - Anoka Sand Plain Habitat Conservation - Phase 7	\$2,651,000	\$2,220,600	\$430,400	83.76%
Totals	\$11,240,000	\$4,182,600	\$7,057,400	37.21%

Timeline

Activity Name	Estimated Completion Date
ACD: site prep in prairies and wetlands	11/1/2028
ACD: prairie and wetland prescribed burns and seeding, buckthorn and woody encroachment removal, ditch plug installation.	12/31/2030
ACD: targeted follow up weed control and seeding	6/1/2032
GRG: Landowner agreements	1/1/2028
GRG: RFP process completed and contracts executed	1/1/2029
GRG: Initial site treatments completed	1/1/2030
GRG: Sustained follow up enhancement activities completed	6/30/2032
TNC: stream and wetland restoration and follow up assessment	6/30/2032

Budget

Grand Totals Across All Partnerships

Item	Funding Request	Total Leverage	Leverage Source	Total
Personnel	\$1,167,000	\$47,000	County, City of Anoka, TNC, LGUs, Private	\$1,214,000
Contracts	\$3,962,000	\$70,000	County, TNC, USFWS, Private, USFWS	\$4,032,000
Fee Acquisition w/ PILT	-	-	-	-
Fee Acquisition w/o PILT	-	-	-	-
Easement Acquisition	-	-	-	-
Easement Stewardship	-	-	-	-
Travel	\$35,000	-	-	\$35,000
Professional Services	-	-	-	-
Direct Support Services	\$168,000	\$296,000	ACD Unrealized DSS, GRG	\$464,000
DNR Land Acquisition Costs	-	-	-	-
Capital Equipment	-	-	-	-
Other Equipment/Tools	\$7,000	-	-	\$7,000
Supplies/Materials	\$163,000	-	-	\$163,000
DNR IDP	-	-	-	-
Grand Total	\$5,502,000	\$413,000	-	\$5,915,000

Partner: ACD

Totals

Item	Funding Request	Total Leverage	Leverage Source	Total
Personnel	\$761,000	\$7,000	County, City of Anoka, TNC	\$768,000
Contracts	\$1,677,000	\$65,000	County, TNC, USFWS, Private	\$1,742,000
Fee Acquisition w/ PILT	-	-	-	-
Fee Acquisition w/o PILT	-	-	-	-
Easement Acquisition	-	-	-	-
Easement Stewardship	-	-	-	-
Travel	-	-	-	-
Professional Services	-	-	-	-
Direct Support Services	\$74,000	\$156,000	ACD Unrealized DSS	\$230,000
DNR Land Acquisition Costs	-	-	-	-
Capital Equipment	-	-	-	-
Other Equipment/Tools	-	-	-	-
Supplies/Materials	\$96,000	-	-	\$96,000
DNR IDP	-	-	-	-
Grand Total	\$2,608,000	\$228,000	-	\$2,836,000

Personnel

Position	Annual FTE	Years Working	Funding Request	Total Leverage	Leverage Source	Total
ACD Personnel	2.0	5.0	\$761,000	\$7,000	County, City of Anoka, TNC	\$768,000

Partner: GRG

Totals

Item	Funding Request	Total Leverage	Leverage Source	Total
Personnel	\$406,000	\$40,000	LGUs, Private	\$446,000
Contracts	\$2,285,000	\$5,000	USFWS	\$2,290,000
Fee Acquisition w/ PILT	-	-	-	-
Fee Acquisition w/o PILT	-	-	-	-
Easement Acquisition	-	-	-	-
Easement Stewardship	-	-	-	-
Travel	\$35,000	-	-	\$35,000
Professional Services	-	-	-	-
Direct Support Services	\$94,000	\$140,000	GRG	\$234,000
DNR Land Acquisition Costs	-	-	-	-
Capital Equipment	-	-	-	-
Other Equipment/Tools	\$7,000	-	-	\$7,000
Supplies/Materials	\$67,000	-	-	\$67,000
DNR IDP	-	-	-	-
Grand Total	\$2,894,000	\$185,000	-	\$3,079,000

Personnel

Position	Annual FTE	Years Working	Funding Request	Total Leverage	Leverage Source	Total
GRG Staff	0.8	5.0	\$406,000	\$40,000	LGUs, Private	\$446,000

Amount of Request: \$5,502,000

Amount of Leverage: \$413,000

Leverage as a percent of the Request: 7.51%

DSS + Personnel: \$1,335,000

As a % of the total request: 24.26%

Easement Stewardship: -

As a % of the Easement Acquisition: -

Leverage Funding Table

	Leverage Amount Committed	Leverage Amount Confirmed (of Committed Funds)	Leverage Amount Anticipated	Total Leverage
Amount:	\$388,000	-	\$25,000	\$413,000
% of Total Leverage:	93.95%	0.0%	6.05%	

N/A

Detail leverage sources and confirmation of funds:

Project landowners will provide match, including City of Cambridge, City of Becker, City of Anoka, and Anoka County, confirmed with signatures. TNC private funds; additional 15K of private funds are anticipated. Verbal commitments for USFWS cash match

Does this proposal have the ability to be scalable?

Yes

If the project received 50% of the requested funding

Describe how the scaling would affect acres/activities and if not proportionately reduced, why?

For projects that are scaled down or split into phases, there is some loss of economy of scale in labor and travel. Larger discrepancies may occur due to determination of which parcels remain fully funded, as there is a wide range of \$/ac in our parcels. We commit to transparency.

Describe how personnel and DSS expenses would be adjusted and if not proportionately reduced, why?

For projects that are scaled down or split into phases, there is potential loss of economy of scale in labor and contracts. DSS expenses are highly proportional to labor and contracts. Some costs are fixed (landowner recruitment; grant management) and must occur regardless of grant amount.

If the project received 30% of the requested funding

Describe how the scaling would affect acres/activities and if not proportionately reduced, why?

For projects that are scaled down or split into phases, there is some loss of economy of scale in labor and travel. Larger discrepancies may occur due to determination of which parcels remain fully funded, as there is a wide range of \$/ac in our parcels. We commit to transparency.

Describe how personnel and DSS expenses would be adjusted and if not proportionately reduced, why?

For projects that are scaled down or split into phases, there is potential loss of economy of scale in labor and contracts. DSS expenses are highly proportional to labor and contracts. Some costs are fixed (landowner recruitment; grant management) and must occur regardless of grant amount.

What other dedicated funds may collaborate with or contribute to this proposal?

Personnel

Has funding for these positions been requested in the past?

Yes

Please explain the overlap of past and future staffing and position levels previously received and how that is coordinated over multiple years?

ACD tracks personnel/ staff time with an hours log, where we record our time for each unique project and then uses pivot tables to sum staff hours each Quarter x their rate.

GRG: Each allocation is operationalized, budgeted, and tracked independently. Projects under each allocation are unique, and personnel time is charged to these unique projects and allocations.

Contracts

What is included in the contracts line?

All subcontracts are for service providers that implement enhancement improvements in the field, and for conducting rare plant surveys.

Travel

Does the amount in the travel line include equipment/vehicle rental?

Yes

Explain the amount in the travel line outside of traditional travel costs of mileage, food, and lodging

Vehicle rental is occasionally necessary due to fleet or personal vehicle lack of availability. Vehicle rental can be competitive with the cost of mileage reimbursement, for longer trips.

I understand and agree that lodging, meals, and mileage must comply with the current MMB Commissioner Plan:

Yes

Direct Support Services

How did you determine which portions of the Direct Support Services of your shared support services is direct to this program?

ACD: ACD is requesting 10% DSS and listing the remaining 20.25% as match. ACD calculated their rate following USDA guidelines and has submitted their methodology to DNR for review. DNR has no objections to their rate in their preliminary analysis.

GRG: In a process approved by DNR in September 2019, GRG's direct support services rate includes all allowable direct and necessary expenditures not captured in other line items in the budget. Our DSS request to LSOHC is less than half the amount allowed by the DNR approved rate, and less than or equal to 10% of the total allocation request.

Other Equipment/Tools

Give examples of the types of Equipment and Tools that will be purchased?

Loppers, trowels, shovels, chainsaws, brushcutters, sprayers, flagging, pin flags, PPE, measuring devices.

Federal Funds

Do you anticipate federal funds as a match for this program?

Yes

Are the funds confirmed?

No

What is the approximate date you anticipate receiving confirmation of the federal funds?

We expect confirmation on 10K of federal match, when we confirm OHF funds are available. These will be received when agreed upon expenses are accrued.

Output Tables

Acres by Resource Type (Table 1)

Type	Wetland	Prairie	Forest	Habitat	Total Acres
Restore	0	0	0	0	0
Protect in Fee with State PILT Liability	0	0	0	0	0
Protect in Fee w/o State PILT Liability	0	0	0	0	0
Protect in Easement	0	0	0	0	0
Enhance	167	527	525	2	1,221
Total	167	527	525	2	1,221

Restoration/Enhancement Acres Breakdown of Existing Protected Lands (Table 1a.2)

	RESTORE: Lands acquired with OHF	RESTORE: Lands NOT acquired with OHF	ENHANCE: Lands acquired with OHF	ENHANCE: Lands NOT acquired with OHF
DNR Lands (WMA, State Forests, etc.)	-	-	-	237
Non-DNR Lands (city, state, federal, etc.)	-	-	16	968
Easements	-	-	-	-
Total	-	-	16	1,205

How many of these Prairie acres are Native Prairie? (Table 1b)

Type	Native Prairie (acres)
Restore	0
Protect in Fee with State PILT Liability	0
Protect in Fee w/o State PILT Liability	0
Protect in Easement	0
Enhance	527
Total	527

Total Requested Funding by Resource Type (Table 2)

Type	Wetland	Prairie	Forest	Habitat	Total Funding
Restore	-	-	-	-	-
Protect in Fee with State PILT Liability	-	-	-	-	-
Protect in Fee w/o State PILT Liability	-	-	-	-	-
Protect in Easement	-	-	-	-	-
Enhance	\$774,000	\$2,082,000	\$2,304,000	\$342,000	\$5,502,000
Total	\$774,000	\$2,082,000	\$2,304,000	\$342,000	\$5,502,000

Acres within each Ecological Section (Table 3)

Type	Metro/Urban	Forest/Prairie	SE Forest	Prairie	N. Forest	Total Acres
Restore	0	0	0	0	0	0
Protect in Fee with State PILT Liability	0	0	0	0	0	0
Protect in Fee w/o State PILT Liability	0	0	0	0	0	0
Protect in Easement	0	0	0	0	0	0
Enhance	1,221	0	0	0	0	1,221
Total	1,221	0	0	0	0	1,221

Total Requested Funding within each Ecological Section (Table 4)

Type	Metro/Urban	Forest/Prairie	SE Forest	Prairie	N. Forest	Total Funding
Restore	-	-	-	-	-	-
Protect in Fee with State	-	-	-	-	-	-

PILT Liability						
Protect in Fee w/o State PILT Liability	-	-	-	-	-	-
Protect in Easement	-	-	-	-	-	-
Enhance	\$5,502,000	-	-	-	-	\$5,502,000
Total	\$5,502,000	-	-	-	-	\$5,502,000

Average Cost per Acre by Resource Type (Table 5)

Type	Wetland	Prairie	Forest	Habitat
Restore	-	-	-	-
Protect in Fee with State PILT Liability	-	-	-	-
Protect in Fee w/o State PILT Liability	-	-	-	-
Protect in Easement	-	-	-	-
Enhance	\$4,634	\$3,950	\$4,388	\$171,000

Average Cost per Acre by Ecological Section (Table 6)

Type	Metro/Urban	Forest/Prairie	SE Forest	Prairie	N. Forest
Restore	-	-	-	-	-
Protect in Fee with State PILT Liability	-	-	-	-	-
Protect in Fee w/o State PILT Liability	-	-	-	-	-
Protect in Easement	-	-	-	-	-
Enhance	\$4,506	-	-	-	-

Target Lake/Stream/River Feet or Miles

Parcels

Sign-up Criteria?

[Yes - Sign up criteria is attached](#)

Explain the process used to identify, prioritize, and select the parcels on your list:

The ASP Partnership 10 - Year Strategic Conservation Action Plan utilizes multiple-criteria GIS analyses to identify and prioritize critical areas for habitat connectivity, SGCN, biodiversity, and native plant communities. For the ASP partnership's strategic plan, multiple-criteria decision analyses in GIS were performed to identify and prioritize critical areas for habitat using data sources layers that capture habitat connectivity, habitats that support species in greatest conservation need, terrestrial and aquatic sites of biodiversity, potential locations of groundwater influenced shallow wetlands, and native plant communities.

Direct recipients used their local expertise, knowledge, and landowner contacts to identify parcels and scope out the activities. At multiples points in the process, the direct recipients reviewed the parcel list collectively and culled parcels that did not rank highly on the Strategic Plan criteria.

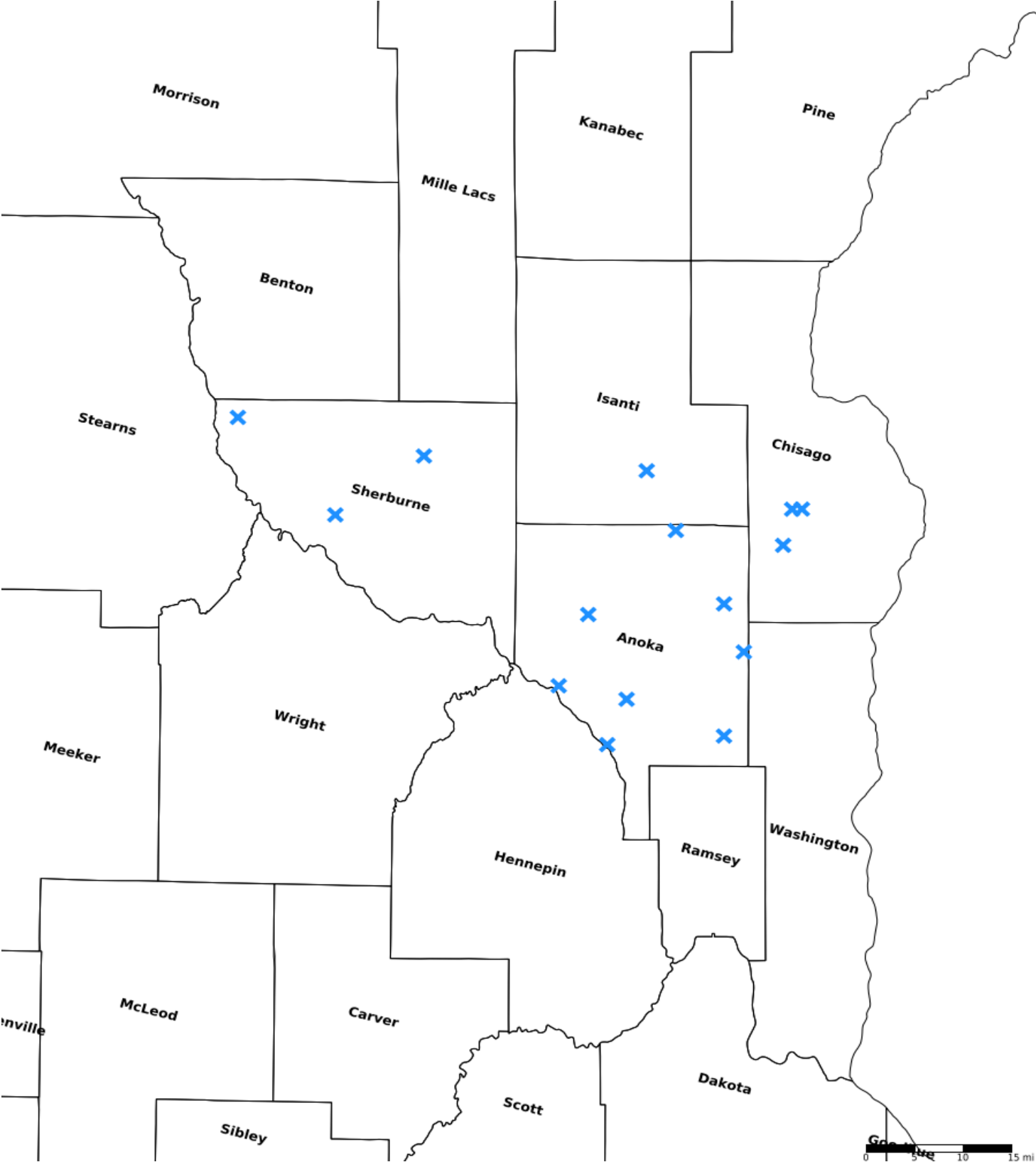
Note that in addition to the parcels below, we have included Anoka Conservation District's Rare Plant Rescue Program, with program write-up and criteria included as an attachment. Great River Greening's Rare Plant Management Program has identified parcels as well as program write-up with criteria included as an attachment.

Restore / Enhance Parcels

Name	County	TRDS	Acres	Est Cost	Existing Protection	Description
ACD - Bunker Hills Regional Park	Anoka	03124201	157	\$785,000	Yes	Invasive species control, tree removal to control encroachment, Rx burn, potential rare plant habitat
ACD - Cedar Creek Conservation Area NW	Anoka	03324232	16	\$80,000	Yes	ditch plugs to restore hydology, vegetation enhancement in wetlands and adjacent uplands, potential rare plant habitat
ACD - Cedar Creek Ecosystem Science Reserve	Anoka	03423226	128	\$480,000	Yes	Invasive species control, tree removal to control encroachment, Rx burn, native seeding, potential rare plant habitat
ACD - Coon Rapids Dam Regional Park Ph 2	Anoka	03124227	64	\$240,000	Yes	invasive control, tree removal for savanna, possible Rx burn, seeding
ACD - Kings Island Ph 2	Anoka	03225235	47	\$177,000	Yes	Invasive species control, tree planting to replace EAB ash, seeding
ACD - Lamprey Pass WMA Ph 2	Anoka	03222213	53	\$200,000	Yes	Invasive species control including buckthorn control
ACD - Rice Creek Chain of Lakes	Anoka	03122222	81	\$304,000	Yes	Invasive species control, tree removal to control encroachment, potential rare plant habitat

GRG - Carlos Avery Wild Rice	Anoka	03322227	25	\$107,000	Yes	Multiple seed sowing of wild rice seed in shallow water basins. Spraying of hybrid cattail prior to seeding.
GRG - Carlos Avery Lent Twsp North Ph 2	Chisago	03421214	17	\$204,000	Yes	Enhance habitat for rare plant populations known to exist primarily in Minnesota's Anoka Sand Plain. Non-native invasive and overabundant native woody encroachment woody removal and control, for rare plant release and native seed bank stimulation.
GRG - Carlos Avery North Pool Forest	Chisago	03421213	44	\$518,000	Yes	Forest health: buckthorn removal and light thinning to promote hardwood regeneration, improve Blanding's upland habitat.
GRG - Carlos Avery South Dam Forest	Chisago	03421234	22	\$98,000	Yes	17ac early response forest buckthorn removal; 5ac heavy thinning conversion to fire-dependent woodland.
GRG - Spirit River Natural Area	Isanti	03523232	116	\$372,000	Yes	Invasive control, EAB Oak Wilt and DED replacement tree planting
GRG - Becker City Park	Sherburne	03429224	74	\$396,000	Yes	67 ac forest enhancement including invasive control, EAB replacement tree planting; 5 acre prairie conversion, 2 acre pollinator turf conversion. Part of 350ac habitat core.
GRG - Sand Prairie WMA Ph 2	Sherburne	03530208	75	\$883,000	Yes	Enhance habitat for rare plant populations known to exist primarily in Minnesota's Anoka Sand Plain. Non-native invasive and overabundant native woody encroachment woody removal and control, for rare plant release and native seed bank stimulation.
GRG - Sherburne NWR	Sherburne	03527228	300	\$321,000	Yes	Aspen shearing, Siberian elm and black locust control, spot inter-seeding for high quality prairie enhancement

Parcel Map

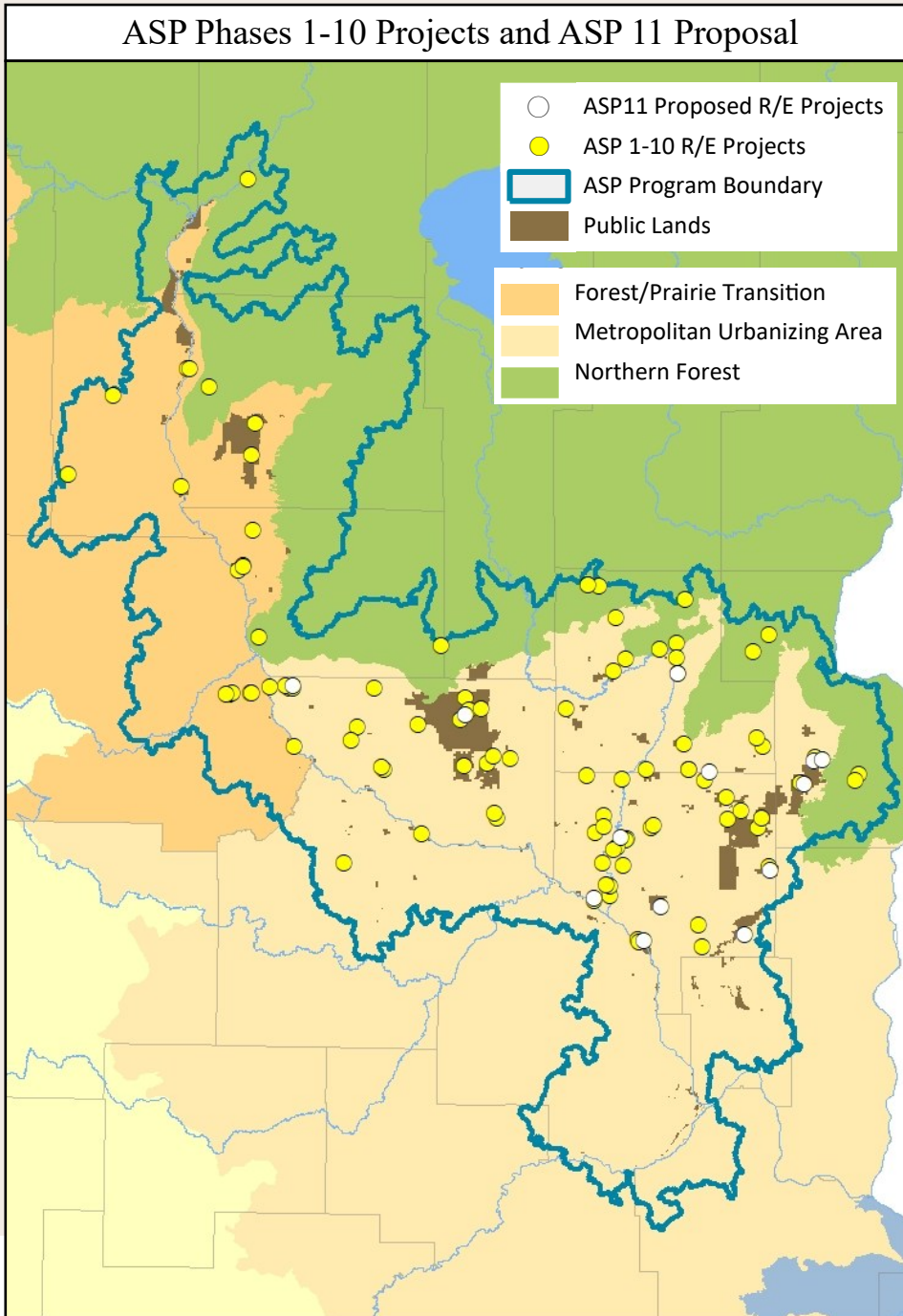


- Protect in Easement
- ▲ Protect in Fee with PILT
- Protect in Fee W/O PILT
- ★ Restore
- ✕ Enhance
- ⊕ Other

Anoka Sand Plain Habitat Conservation - Phase 11

Enhance 1,221 acres of prairie, oak savanna, wetlands with rare plants, wild rice, and fire-dependent woodlands.

Rare Plant Rescue Program to transplant rare plants permitted for destruction to protected sites.



Priorities based on:

DNR's Wildlife Action Network

ASP Partnership Strategic Plan

MBS Biodiversity Significance

Habitat Connectivity

Habitat Cores

Native Plant Communities

Species in Greatest Conservation Need

Threatened/Endangered/Special Concern Species

For more information:

Wiley Buck

Senior Program Manager

Great River Greening

wbuck@greatrivergreening.org

651-272-3981



Anoka Sand Plain Partnership Restoration/Enhancement Accomplishments Phases 1 - 10

- 12,762 Acres Restored & Enhanced
- Additional Restoration, and Enhancement in progress
- **Over-delivered: Completed 136% of proposed Protected acres and 128% of proposed Restoration/Enhancement acres, with an additional 1,500 R/E acres underway**
- Rescued over 22,000 rare plants from 15 developments



The Anoka Sand Plain Partnership

VISION

Protection, restoration and enhancement to increase biological diversity, habitat connectivity and landscape resilience in the Anoka Sand Plain.

ASP Partnership Project Examples



J. Husveth/CCES



**Carlos Avery WMA
Lent Township**
Rare plant habitat
enhancement
ASP7&8

**Cedar Creek
Conservation Area**
Ditch plug hydrology
restoration, wetland and
prairie enhancement
ASP7



Robert & Marilyn Burman WMA
Prairie, sedge meadow wetland, oak
savanna and woodland enhancement
ASP6

OPPORTUNITY

*Over 72,000 acres in the ASP
Ecoregion are ranked
Outstanding or High
Biodiversity by the
Minnesota County
Biological Survey.*

*The ASP provides habitat for
97 Species in Greatest
Conservation Need.*

*131 MN Endangered,
Threatened, Special
Concern species in the ASP.*

URGENCY

*State-wide projected growth
through 2045 is estimated at
7% while growth in Anoka and
Sherburne counties is 14% and
24% respectively.*