



## Lessard-Sams Outdoor Heritage Council

Southeast Minnesota Protection and Restoration Phase 15

ML 2027 Request for Funding

---

### General Information

**Date:** 06/22/2026

**Proposal Title:** Southeast Minnesota Protection and Restoration Phase 15

**Funds Requested:** \$16,585,600

**Confirmed Leverage Funds:** -

**Is this proposal Scalable?:** Yes

### Manager Information

**Manager's Name:** David Ruff

**Title:** Associate Director of Forest Strategies

**Organization:** The Nature Conservancy

**Address:** 102 Walnut St Suite 203

**City:** Winona, MN 55987

**Email:** david.ruff@tnc.org

**Office Number:** (507) 646-9662

**Mobile Number:** (507) 261-4954

**Fax Number:**

**Website:** nature.org/

### Location Information

**County Location(s):** Winona, Olmsted, Wabasha, Fillmore, Houston and Goodhue.

**Eco regions in which work will take place:**

Southeast Forest

**Activity types:**

Protect in Easement

Protect in Fee

Restore

Enhance

**Priority resources addressed by activity:**

Wetlands

Prairie

Forest

Habitat

**Narrative****Abstract**

Phase 15 of the Southeast Minnesota Protection and Restoration program will protect approximately 1,970 acres using conservation easements and fee-title acquisition, as well as restore and enhance approximately 2,750 acres of declining habitat for important wildlife species. Work will occur in strategically targeted, resilient corridors of biodiversity significance within the Blufflands of Southeast Minnesota, resulting in increased public access and improved wildlife habitat.

**Design and Scope of Work**

The Southeast Blufflands is Minnesota's most biodiverse region. Some 86 different native plant communities have been mapped by the Minnesota Biological Survey (MBS) in the program area, covering nearly 150,000 acres. These communities provide habitat for 183 rare state-listed plants and animals and more Species in Greatest Conservation Need (SGCN) than anywhere else in the state. These imperiled species are concentrated within 749 Sites of Biodiversity Significance.

Despite this biological richness, only 5% of the region has been protected to date.

The Nature Conservancy (TNC), Minnesota Land Trust (MLT) and Trust for Public Land (TPL), in partnership, are working to change this. Through our Southeast Minnesota Protection and Restoration Program, we are expanding and connecting contiguous blocks of protected lands, allowing land managers to restore, enhance and maintain high-quality habitats at a scale difficult to accomplish with fragmented ownership. Protecting and managing these lands is not only important for ecological reasons but it also allows public enjoyment of these lands and the resources they provide. This program is increasing access to public lands to meet the continued high demand for outdoor recreation within the region.

This Program has a long, proven track record of protecting, restoring and enhancing lands that meet both state and local priorities for biodiversity conservation, land access, and watershed health. To date, the Partnership has protected 16.8 square miles (10,753 acres) of priority lands and 52 stream and river miles, and has restored/enhanced 18.9 square miles (12,087 acres) of habitat. Great results, but our work is not finished.

This 15th Phase of our Southeast Minnesota Protection and Restoration Program continues this body of work:

1. Conservation Easements: MLT will protect 1,320 acres of high-quality private land through conservation easements. Alongside existing high-priority projects, MLT will identify potential projects within targeted priority areas through an RFP process. This competitive landowner bid process incentivizes landowner donation of easement value, ranking projects based on ecological value and cost, prioritizing the best projects and securing them at the lowest cost to the state.

2. Fee Acquisition: TPL will coordinate with MN DNR on all potential fee title acquisitions. TPL will assist the

participating DNR Divisions by conducting all or some of the following activities: initial site reviews, negotiations with the willing seller, appraisals, environmental reviews and acquisition of fee title. TPL will transfer lands to the DNR except when county or municipal ownership is appropriate. Fee acquisition of 650 acres of forest, prairie, and other habitat and 1 mile of coldwater trout stream is planned.

3. Restoration and Enhancement: TNC will use a stewardship crew and contractors to restore/enhance approximately 2,700 acres of bluff prairie, forest, and riparian habitat within priority protected lands. Ecological restoration enhancement management plans will be developed in coordination with the DNR staff, landowners and/or hired subcontractors. MLT will enhance 50 acres of high-quality habitat in bluff prairies and oak woodlands on private lands protected through conservation easements in prior phases of this program.

### **Explain how the proposal addresses habitat protection, restoration, and/or enhancement for fish, game & wildlife, including threatened or endangered species conservation**

Working in the biodiversity hotspot of Minnesota, our goal is to expand and improve connected complexes of habitat that support the full diversity of plants, wildlife, and fish in Minnesota's Driftless Area. We target areas of biodiversity significance identified by the Minnesota Biological Survey (MBS), and protect and restore connected habitat to give SGCN species new opportunities to expand, migrate, and adapt to changing conditions. Protecting and expanding large areas preserves the full range of habitat types that supports the region's biodiversity. In addition to the numerous SGCN that benefit from our work, the mosaic of habitats we protect and manage support bedding areas for deer, roosting and foraging for turkeys, cold, clean water for trout, and key habitat needs for other popular small game species.

Sedimentation and erosion are major threats to fish in the region. Protecting and enhancing upland natural communities, especially on the steep bluffs that flank most trout streams, will help prevent additional erosion. Aquatic habitat also benefits from protection of trout stream banks and floodplains. The water-quality benefit that comes with the protection of forested upland areas is significant and contributes to improved trout and non-game fish and mussel habitat.

This program has benefited habitat for over 2,721 documented occurrences of some 112 SGCN identified by the Natural Heritage Inventory. This proposal will continue with high impact projects that protect, restore, and enhance habitat for Minnesota's rarest and most vulnerable species. Specific habitats include bluff prairie, oak savanna, oak-hickory woodland, and white pine - oak/maple forest. These habitats support rare species including: tri-colored and northern long-eared bats, timber rattlesnake, Blanding's turtle, western foxsnake, North American racer, American ginseng, tuberous Indian plantain, plains wild indigo and red-shouldered hawk.

### **What are the elements of this proposal that are critical from a timing perspective?**

Fragmentation, infrastructure development, and cropland conversion are constant threats to habitat. It is essential to seize the increasingly rare opportunities to protect large parcels when they become available, something our partnership has a strong history of accomplishing.

In Southeast Minnesota, landowner interest and conservation demand exceed available funding. Although MLT typically releases an RFP to identify projects after funding is secured, there is a backlog of 8 high-priority conservation easement parcels included on this parcel list totaling 1,150 acres ahead of any RFP process.

Invasive species threaten many of the high-quality habitat complexes in the region. Active management is needed to maintain native plant communities. Likewise, the lack of fire and grazing on bluff prairies and oak savannas

within larger disturbance dependent habitat threatens the long-term ecosystem viability. Delaying action in those habitats by even a couple years can make future management more difficult and costly.

**Describe how the proposal expands habitat corridors or complexes and/or addresses habitat fragmentation:**

A number of conservation plans covering Southeast MN have identified habitat corridors and complexes with high biodiversity significance and potential to expand areas of protected land. These include watershed-based Landscape Stewardship Plans and DNR’s Wildlife Action Network along with the Conservation Focus Areas in the Root River and Whitewater watersheds.

Our work will focus on these areas, working towards a long-term vision of high-quality protected habitat complexes within larger connected corridors. Protection projects will prioritize parcels that are either 1) connected to existing protected lands, or 2) are of significant standalone size and have potential for future expansion. These two criteria directly address expanding habitat complexes and protecting large parcels from parcelization and fragmentation.

Restoration projects fill in gaps within these habitat corridors resulting from past land use, reducing fragmentation and increasing landscape connectivity. Enhancement work will focus on improving habitat within the core complexes. We strive to bring habitat within these cores to the highest quality, creating resilient hubs for species along natural corridors.

**Which top 2 Conservation Plans referenced in MS97A.056, subd. 3a are most applicable to this project?**

Minnesota's Wildlife Action Plan 2015-2025

Outdoor Heritage Fund: A 25 Year Framework

**Which LSOHC section priorities are addressed in this proposal?**

**Southeast Forest**

Protect forest habitat through acquisition in fee or easement to prevent parcelization and fragmentation and to provide the ability to access and manage landlocked public properties

**Describe how this project/program will produce and demonstrate a significant and permanent conservation legacy and/or outcomes for fish, game, and wildlife:**

To date, 16.8 square miles of critical habitat have been protected through this Program. Over 8 square miles have been opened for public hunting and fishing, while allowing increased management within habitat complexes. Approximately 8.2 square miles of permanent conservation easements within priority habitat complexes have been procured. This program has protected habitat for 112 different SGCN, including 18 classified by the State of Minnesota as Endangered and 25 as Threatened. But there is still more to do. Of the 227,350 acres of moderate or higher biodiversity significance mapped by MBS in the Blufflands, only 64,000, or 28% are protected.

**If this project/program does not have permanent outcomes, describe why it is important to undertake at this time:**

In addition to the permanent protection outcomes this program provides, the enhancement work proposed through this funding will return habitat to conditions where ongoing management is much more impactful. In

many cases, this work is necessary to make cost efficient management possible at all.

Much of Southeast Minnesota’s habitat has suffered from a lack of ecological disturbance, especially fire, over the last several decades. Returning natural disturbance regimes can sustain long term ecological health, and prescribed fire is the most cost-effective management tool available. However, degraded habitats suffer from self-reinforcing impacts, and significant effort is required to restore plant communities and structures conducive to fire. By taking on the hard work needed to restore these conditions, we will make sustainable management feasible for an increasing amount of critical habitat moving forward.

### Outcomes

#### **Programs in southeast forest region:**

Large corridors and complexes of biologically diverse wildlife habitat typical of the unglaciated region are restored and protected ~ *We will track the acres of priority parcels protected within the Conservation Opportunity Areas (COA) identified as priorities in regional planning. Success within each COA will be determined based on the percentage of area protected, restored and/or enhanced.*

#### **Per MS 97A.056, Subd. 24, Please explain whether the request is supplanting or is a substitution for any previous funding that was not from a legacy fund and was used for the same purpose.**

This proposal does not substitute or supplant previous funding that was not from a Legacy fund.

#### **How will you sustain and/or maintain this work after the Outdoor Heritage Funds are expended?**

Tracts acquired in fee title will be transferred to the state for ongoing management except when local ownership is appropriate. Acquisition projects will be near or adjacent to existing protected lands, including state-owned lands and lands under conservation easement, allowing for the expansion of management activities that are already taking place. Habitats cleared of invasive species will be maintained with prescribed fire and other practices depending on funding. Protection and restoration projects will improve future prescribed fire and maintenance activities through economies of scale. The tracts protected and enhanced as part of this proposal also meet the prioritization for Minnesota's Wildlife Action Plan. MN DNR has been successful in securing federal habitat enhancement funding.

Land protected through conservation easements will be sustained by MLT through a state-of-the art easement stewardship standards and practices. MLT is a nationally-accredited and insured land trust with a successful easement stewardship program that includes annual property monitoring and defending the easements as necessary. In addition, MLT encourages landowners to undertake active ecological management of their properties, provides them with habitat management plans and works with them to secure resources (expertise and funding) to undertake these activities over time.

#### **Actions to Maintain Project Outcomes**

<b>Year</b>	<b>Source of Funds</b>	<b>Step 1</b>	<b>Step 2</b>	<b>Step 3</b>
Every 4-6 years	US Fish and Wildlife Service	prescribed fire	-	-
Every 4-6 years	Game and Fish Fund	prescribed fire	-	-
2027 and perpetually	MLT Easement Stewardship and Enforcement Fund	Annual monitoring in perpetuity	Enforcement as necessary	-

**Provide an assessment of how your program may celebrate cultural diversity or reach diverse communities in Minnesota, including reaching low- and moderate-income households:**

This program focuses on protecting and restoring habitat critical to biodiversity in the most biologically diverse region of Minnesota. While that primary goal does not directly engage specific human communities, protecting, restoring, and enhancing diverse and resilient habitat benefits all Minnesotans. It keeps our air and water clean, mitigates the impacts of climate change, and conserves the biological diversity that is every Minnesotan’s natural heritage.

Our program also works to increase public access to opportunities for recreation. Outdoor recreation provides benefits to all people, from the physical, mental, and spiritual health rewards of being in nature to the social benefits of family and group recreation. In Southeast Minnesota, the rising price of land is quickly turning access to natural spaces into a luxury good. With less than 5 percent of the land protected, opening new opportunities for public access to the outdoors helps make sure economic status never becomes a barrier to enjoying the wealth of nature available in the Driftless Area. The opportunities public land provides are especially important to members of indigenous communities who were displaced from the land and other historically marginalized or disadvantaged communities who have had fewer opportunities to access or acquire it. Indeed, public land in Southeast Minnesota is used heavily by members of BIPOC communities who lack places to hunt, fish, or hike closer to home.

The Trust for Public Land, The Nature Conservancy, and Minnesota Land Trust all hold a commitment to diversity, equity, inclusion, and justice as a core value. Examples of that commitment include, but are not limited to, working with diverse communities to put a park, trail, or natural area within a 10-minute walk of every Minnesotan living within a city; programs to protect camps and nature centers that serve a diversity of Minnesota Youth; partnerships with indigenous communities to protect culturally important resources like wild rice; and to undertake shared learning around cultural practices like prescribed fire. We are committed to seeking more ways to close the outdoor access gap and support diverse human communities as we continue preserving the biological diversity of Minnesota.

**Activity Details**

**Requirements**

**Will county board or other local government approval be formally sought\*\* prior to acquisition, per 97A.056 subd 13(j)?**

No

**Describe any measures to inform local governments of land acquisition under their jurisdiction:**

We will follow the county/township board notification processes as directed by current statutory language.

**Is the land you plan to acquire (fee title) free of any other permanent protection?**

Yes

**Is the land you plan to acquire (easement) free of any other permanent protection?**

Yes

**Will restoration and enhancement work follow best management practices including MS 84.973 Pollinator Habitat Program?**

Yes

**Is the restoration and enhancement activity on permanently protected land per 97A.056, Subd 13(f), tribal lands, and/or public waters per MS 103G.005, Subd. 15 or on lands to be acquired in this program?**

Yes

**Where does the activity take place?**

WMA

SNA

AMA

Permanently Protected Conservation Easements

County/Municipal

Public Waters

State Forests

Other : TNC Preserve acquired with Outdoor Heritage Funds

**Land Use**

**Will there be planting of any crop on OHF land purchased or restored in this program, either by the proposer or the end owner of the property, outside of the initial restoration of the land?**

Yes

**Explain what will be planted and include the maximum percentage of any acquired parcel that would be planted into foodplots by the proposer or the end owner of the property:**

Short-term use of agricultural crops is an accepted best practice for preparing a site for prairie restoration. For example, short-term use of soybeans could be used for restorations in order to control weed seedbeds prior to prairie planting. In some cases, this necessitates the use of GMO treated products to facilitate herbicide use in order to control weeds present in the seedbank, however neonicotinoids will not be used.

MLT - The purpose of the Minnesota Land Trust's conservation easements is to protect existing high quality natural habitat and to preserve opportunities for future restoration. As such, we restrict any agricultural lands and use on the properties. In cases in which there are agricultural lands associated with the larger property, we will either carve the agricultural area out of the conservation easement, or in some limited cases, we may include a small percentage of agricultural lands if it is not feasible to carve those areas out. In such cases, however, we will not use OHF funds to pay the landowners for that portion of the conservation easement.

**Will insecticides or fungicides (including neonicotinoid and fungicide treated seed) be used within any activities of this proposal either in the process of restoration or use as food plots?**

No

**Is this land currently open for hunting and fishing?**

No

**Will the land be open for hunting and fishing after completion?**

Yes

**Describe any variation from the State of Minnesota regulations:**

None

**Who will eventually own the fee title land?**

State of MN

NGO

County

Local Unit of Government

**Land acquired in fee will be designated as a:**

WMA

AMA

SNA

State Forest

Other : TNC Preserve; County- or City-owned natural area

**Will the eased land be open for public use?**

No

**Will new trails or roads be developed or improved, beyond those used for maintenance and management, as a result of the proposed acquisition?**

No

**Will the land that you acquire (fee or easement) be restored or enhanced within this proposal's funding and availability?**

No

**Explain how and when the restoration/enhancement work will be completed and identify the source of funding:**

Restoration expenses include program development activities in addition to restoration construction expenses. MLT restoration personnel will conduct outreach with easement landowners to evaluate, scope, design and schedule additional restoration projects. These activities will improve the project selection, cost-estimates and outcomes for future OHF funding requests. Some restoration and enhancement work on fee acquisitions may continue beyond this proposal's funding and availability. In these cases, additional restoration will be funded by a combination of future OHF proposals, other grants, or DNR funding.

**Previous OHF Appropriations**

**Have you received OHF dollars through LSOHC for this program or project in the past?**

Yes

**Are there any of these past appropriations still OPEN?**

Yes

**If needed, please include any explanation of unspent funds.**

The table below shows automatically calculated figures from the reporting period ending December 31, 2025. Since then, significant spending has occurred including a \$962,000 Fee Acquisition, a \$93,500 Conservation Easement acquisition, and over \$140,000 in contracts spending on restoration and enhancement projects.

In addition to that spending, our partnership has roughly \$11.2 Million committed to active projects, including three conservations easements closing in May/June 2026 totaling \$902,000, two fee acquisitions totaling \$1,426,920 also scheduled for June, and the \$6,175,000 Wacouta Bay acquisition anticipated in the fall.

Across all open appropriations, only 18% of funds remain that are not contractually obligated or committed to an active project. Remaining unspent funds are largely dedicated to ongoing personnel and professional service costs necessary to complete planned projects in 2026 and 2027.

**Open OHF Appropriations - Data from Most Recent Status Update**

Project	Funding Amount Received	Amount Spent to Date	Funding Remaining	% Spent to Date
ML 2026 - Southeast Minnesota Protection and Restoration Phase 14	\$7,849,000	-	\$7,849,000	0.0%
ML 2025 - Southeast Minnesota Protection and Restoration Phase 13	\$2,334,000	\$700	\$2,333,300	0.03%
ML 2024 - Southeast Minnesota Protection and Restoration Phase 12	\$3,052,000	\$82,200	\$2,969,800	2.69%
ML 2023 - Southeast Minnesota Protection and Restoration Phase 11	\$3,675,000	\$353,800	\$3,321,200	9.63%
ML 2022 - Southeast Minnesota Protection and Restoration Phase 10	\$5,358,000	\$2,964,300	\$2,393,700	55.32%
ML 2021 - Southeast Minnesota Protection and Restoration Phase 9	\$4,068,000	\$3,853,600	\$214,400	94.73%
<b>Totals</b>	<b>\$26,336,000</b>	<b>\$7,254,600</b>	<b>\$19,081,400</b>	<b>27.55%</b>

**Timeline**

Activity Name	Estimated Completion Date
Purchase agreements or options on acquisition of fee land	June 30, 2031
Restoration/Enhancement on parcels protected with grant	June 30, 2035
Restoration/Enhancement on parcels protected without grant	June 30, 2032
Acquisition of fee land	June 30, 2031
Easement acquisition	June 30, 2031

Budget

**Grand Totals Across All Partnerships**

<b>Item</b>	<b>Funding Request</b>	<b>Total Leverage</b>	<b>Leverage Source</b>	<b>Total</b>
Personnel	\$1,736,100	-	-	\$1,736,100
Contracts	\$2,112,000	-	-	\$2,112,000
Fee Acquisition w/ PILT	\$6,500,000	-	-	\$6,500,000
Fee Acquisition w/o PILT	-	-	-	-
Easement Acquisition	\$4,200,000	\$420,000	Landowner Donations	\$4,620,000
Easement Stewardship	\$392,000	-	-	\$392,000
Travel	\$70,000	\$3,000	-, Private	\$73,000
Professional Services	\$563,000	-	-	\$563,000
Direct Support Services	\$470,500	\$368,400	-, Private, Private	\$838,900
DNR Land Acquisition Costs	\$195,000	-	-	\$195,000
Capital Equipment	-	-	-	-
Other Equipment/Tools	\$6,000	-	-	\$6,000
Supplies/Materials	\$179,000	-	-	\$179,000
DNR IDP	\$162,000	-	-	\$162,000
<b>Grand Total</b>	<b>\$16,585,600</b>	<b>\$791,400</b>	-	<b>\$17,377,000</b>

**Partner: MLT**

**Totals**

Item	Funding Request	Total Leverage	Leverage Source	Total
Personnel	\$690,000	-	-	\$690,000
Contracts	\$362,000	-	-	\$362,000
Fee Acquisition w/ PILT	-	-	-	-
Fee Acquisition w/o PILT	-	-	-	-
Easement Acquisition	\$4,200,000	\$420,000	Landowner Donations	\$4,620,000
Easement Stewardship	\$392,000	-	-	\$392,000
Travel	\$25,000	-	-	\$25,000
Professional Services	\$464,000	-	-	\$464,000
Direct Support Services	\$186,300	-	-	\$186,300
DNR Land Acquisition Costs	-	-	-	-
Capital Equipment	-	-	-	-
Other Equipment/Tools	\$6,000	-	-	\$6,000
Supplies/Materials	\$6,000	-	-	\$6,000
DNR IDP	-	-	-	-
<b>Grand Total</b>	<b>\$6,331,300</b>	<b>\$420,000</b>	-	<b>\$6,751,300</b>

**Personnel**

Position	Annual FTE	Years Working	Funding Request	Total Leverage	Leverage Source	Total
MLT Land Protection Staff	1.0	4.0	\$440,000	-	-	\$440,000
MLT Restoration Program Staff	0.5	5.0	\$250,000	-	-	\$250,000

**Partner: TNC**

**Totals**

Item	Funding Request	Total Leverage	Leverage Source	Total
Personnel	\$551,100	-	-	\$551,100
Contracts	\$1,500,000	-	-	\$1,500,000
Fee Acquisition w/ PILT	-	-	-	-
Fee Acquisition w/o PILT	-	-	-	-
Easement Acquisition	-	-	-	-
Easement Stewardship	-	-	-	-
Travel	\$45,000	-	-	\$45,000
Professional Services	-	-	-	-
Direct Support Services	\$170,200	\$254,400	Private	\$424,600
DNR Land Acquisition Costs	-	-	-	-
Capital Equipment	-	-	-	-
Other Equipment/Tools	-	-	-	-
Supplies/Materials	\$173,000	-	-	\$173,000
DNR IDP	-	-	-	-
<b>Grand Total</b>	<b>\$2,439,300</b>	<b>\$254,400</b>	-	<b>\$2,693,700</b>

**Personnel**

Position	Annual FTE	Years Working	Funding Request	Total Leverage	Leverage Source	Total
TNC Restoration/Enhancement Crew	1.75	2.0	\$207,400	-	-	\$207,400
TNC Project Management, Protection and Grants Admin	1.3	3.0	\$343,700	-	-	\$343,700

**Partner: TPL**

**Totals**

Item	Funding Request	Total Leverage	Leverage Source	Total
Personnel	\$495,000	-	-	\$495,000
Contracts	\$250,000	-	-	\$250,000
Fee Acquisition w/ PILT	\$6,500,000	-	-	\$6,500,000
Fee Acquisition w/o PILT	-	-	-	-
Easement Acquisition	-	-	-	-
Easement Stewardship	-	-	-	-
Travel	-	\$3,000	Private	\$3,000
Professional Services	\$99,000	-	-	\$99,000
Direct Support Services	\$114,000	\$114,000	Private	\$228,000
DNR Land Acquisition Costs	\$195,000	-	-	\$195,000
Capital Equipment	-	-	-	-
Other Equipment/Tools	-	-	-	-
Supplies/Materials	-	-	-	-
DNR IDP	\$162,000	-	-	\$162,000
<b>Grand Total</b>	<b>\$7,815,000</b>	<b>\$117,000</b>	-	<b>\$7,932,000</b>

**Personnel**

Position	Annual FTE	Years Working	Funding Request	Total Leverage	Leverage Source	Total
TPL Protection and Legal Staff	0.68	4.0	\$495,000	-	-	\$495,000

**Amount of Request:** \$16,585,600

**Amount of Leverage:** \$791,400

**Leverage as a percent of the Request:** 4.77%

**DSS + Personnel:** \$2,206,600

**As a % of the total request:** 13.3%

**Easement Stewardship:** \$392,000

**As a % of the Easement Acquisition:** 9.33%

**Leverage Funding Table**

	Leverage Amount Committed	Leverage Amount Confirmed (of Committed Funds)	Leverage Amount Anticipated	Total Leverage
Amount:	\$371,400	-	\$420,000	\$791,400
% of Total Leverage:	46.93%	0.0%	53.07%	

N/A

**Detail leverage sources and confirmation of funds:**

TPL and TNC will leverage privately sourced funds to cover direct support services (DSS) costs not reimbursed.

TPL has leveraged private funds for travel.

MLT encourages landowners to donate value as a participant in the program. This leverage (\$420,000) is a conservative estimate of expected landowner contribution.

**Does this proposal have the ability to be scalable?**

Yes

**If the project received 50% of the requested funding**

**Describe how the scaling would affect acres/activities and if not proportionately reduced, why?**

A reduction in funding would reduce outputs (acres/activities) slightly more than proportionately. Some costs related to program development and oversight remain constant regardless of appropriation amount. The costs of many professional services related to land protection also do not scale proportionately, forcing a larger reduction in acres/activities.

**Describe how personnel and DSS expenses would be adjusted and if not proportionately reduced, why?**

Program management costs (personnel and DSS expenses) will be reduced as well. However, not exactly proportionately as program development and oversight costs remain consistent regardless of appropriation amount.

**If the project received 30% of the requested funding**

**Describe how the scaling would affect acres/activities and if not proportionately reduced, why?**

A reduction in funding would reduce outputs (acres/activities) more than proportionately. Some costs related to program development and oversight remain constant regardless of appropriation amount. The costs of many professional services related to land protection also do not scale proportionately, forcing a larger reduction in acres/activities.

**Describe how personnel and DSS expenses would be adjusted and if not proportionately reduced, why?**

Program management costs (personnel and DSS expenses) will be reduced as well. However, not exactly proportionately as program development and oversight costs remain consistent regardless of appropriation amount.

**What other dedicated funds may collaborate with or contribute to this proposal?**

**Personnel**

**Has funding for these positions been requested in the past?**

Yes

**Please explain the overlap of past and future staffing and position levels previously received and how that is coordinated over multiple years?**

Phase 15 is a component of the larger Southeast Minnesota Protection and Restoration Program. Continuity of funding across multiple phases allows us flexibility when prioritizing parcels for protection or enhancement. Further, it ensures stability in our staffing model and provides the ability to plan and prioritize projects over multiple years. The flexibility provided by stable funding is critically important to achieving conservation goals given the uncertainty and variability of field season weather conditions.

**Contracts**

**What is included in the contracts line?**

TNC and TPL contract line items are dedicated to enhancement and restoration work. Typical contractors include private vendors and Conservation Corps of MN/IA.

MLT will use contract funds for three purposes: to complete habitat management plans on new easement acquisitions; for restoration projects; and landowner outreach.

## Professional Services

**What is included in the Professional Services line?**

Appraisals

Other : Environmental assessments

Surveys

Title Insurance and Legal Fees

## Fee Acquisition

**What is the anticipated number of fee title acquisition transactions?**

3-5

## Easement Stewardship

**What is the number of easements anticipated, cost per easement for stewardship, and explain how that amount is calculated?**

The Land Trust expects to close 10-14 conservation easement projects. The average cost per easement to perpetually fund the Minnesota Land Trust's long-term monitoring and enforcement obligations is \$28,000; in extreme circumstances, a larger amount may be sought. This figure has been determined by using a stewardship funding "cost analysis" which is the industry standard according to the Land Trust Accreditation process. Periodic updates to this cost analysis are provided to LSOHC staff.

## Travel

**Does the amount in the travel line include equipment/vehicle rental?**

Yes

**Explain the amount in the travel line outside of traditional travel costs of mileage, food, and lodging**

Vehicle rental is also included.

**I understand and agree that lodging, meals, and mileage must comply with the current MMB Commissioner Plan:**

Yes

## Direct Support Services

**How did you determine which portions of the Direct Support Services of your shared support services is direct to this program?**

TNC: DSS is based on The Nature Conservancy's Federal Negotiated Rate (FNR) as proposed and approved by the US Dept. of Interior on an annual basis. In this proposal we are requesting reimbursement of 7.5% of eligible base costs as determined by our annual FNR and based on suggestions from the Council in prior years' hearings. The amount requested for reimbursement represents 40% of the total reimbursable costs allowed under the FNR. Examples of expenses included in the FNR include services from in-house legal counsel; finance, human resources; and information technology support, all of which contribute directly to the implementation of the project. The FNR

is not applied to capital equipment over \$50,000 or land acquisition.

MLT: In a process that was approved by the DNR on March 17, 2017, Minnesota Land Trust determined our direct support services rate to include all of the allowable direct and necessary expenditures that are not captured in other line items in the budget, which is similar to the Land Trust's proposed federal indirect rate. We will apply this DNR approved rate only to personnel expenses to determine the total amount of the direct support services.

TPL: The Trust for Public Land's DSS request is based upon our federally approved rate, which has been approved by the DNR. 50% of these costs are requested from the grant and 50% is contributed as leverage.

## **Other Equipment/Tools**

### **Give examples of the types of Equipment and Tools that will be purchased?**

Equipment and tools to be purchased will be those necessary for protection, restoration and management activities. Examples include Personal Protective Equipment, other field safety equipment, GPS units, backpack sprayers for herbicide application, bladder bags, and assorted hand tools for prescribed fire.

## **Federal Funds**

### **Do you anticipate federal funds as a match for this program?**

No

## Output Tables

### Acres by Resource Type (Table 1)

Type	Wetland	Prairie	Forest	Habitat	Total Acres
Restore	0	100	100	0	200
Protect in Fee with State PILT Liability	0	0	0	650	650
Protect in Fee w/o State PILT Liability	0	0	0	0	0
Protect in Easement	0	0	0	1,320	1,320
Enhance	0	1,000	1,500	50	2,550
<b>Total</b>	<b>0</b>	<b>1,100</b>	<b>1,600</b>	<b>2,020</b>	<b>4,720</b>

### Restoration/Enhancement Acres of OHF Acquired Lands (Table 1a.1)

	RESTORE: Lands acquired in this proposal	RESTORE: Lands acquired with previous OHF appropriations (<5yrs old)	RESTORE Total	ENHANCE: Lands acquired in this proposal	ENHANCE: Lands acquired with previous OHF appropriations (<5yrs old)	ENHANCE Total
Protect in Fee with State PILT Liability	50	100	150	100	500	600
Protect in Fee w/o State PILT Liability	-	-	-	-	-	-
Protect in Easement	-	-	0	-	30	30
<b>Total</b>	<b>50</b>	<b>100</b>	<b>150</b>	<b>100</b>	<b>530</b>	<b>630</b>

### Restoration/Enhancement Acres Breakdown of Existing Protected Lands (Table 1a.2)

	RESTORE: Lands acquired with OHF	RESTORE: Lands NOT acquired with OHF	ENHANCE: Lands acquired with OHF	ENHANCE: Lands NOT acquired with OHF
DNR Lands (WMA, State Forests, etc.)	100	100	500	1,900
Non-DNR Lands (city, state, federal, etc.)	-	-	100	-
Easements	-	-	30	20
<b>Total</b>	<b>100</b>	<b>100</b>	<b>630</b>	<b>1,920</b>

### How many of these Prairie acres are Native Prairie? (Table 1b)

Type	Native Prairie (acres)
Restore	0
Protect in Fee with State PILT Liability	0
Protect in Fee w/o State PILT Liability	0
Protect in Easement	0
Enhance	115
<b>Total</b>	<b>115</b>

### Total Requested Funding by Resource Type (Table 2)

Type	Wetland	Prairie	Forest	Habitat	Total Funding
Restore	-	\$100,000	\$100,000	-	\$200,000
Protect in Fee with State PILT Liability	-	-	-	\$7,815,000	\$7,815,000
Protect in Fee w/o State PILT Liability	-	-	-	-	-
Protect in Easement	-	-	-	\$5,752,800	\$5,752,800
Enhance	-	\$900,000	\$1,339,300	\$578,500	\$2,817,800
<b>Total</b>	<b>-</b>	<b>\$1,000,000</b>	<b>\$1,439,300</b>	<b>\$14,146,300</b>	<b>\$16,585,600</b>

**Acres within each Ecological Section (Table 3)**

Type	Metro/Urban	Forest/Prairie	SE Forest	Prairie	N. Forest	Total Acres
Restore	0	0	200	0	0	200
Protect in Fee with State PILT Liability	0	0	650	0	0	650
Protect in Fee w/o State PILT Liability	0	0	0	0	0	0
Protect in Easement	0	0	1,320	0	0	1,320
Enhance	0	0	2,550	0	0	2,550
<b>Total</b>	<b>0</b>	<b>0</b>	<b>4,720</b>	<b>0</b>	<b>0</b>	<b>4,720</b>

**Total Requested Funding within each Ecological Section (Table 4)**

Type	Metro/Urban	Forest/Prairie	SE Forest	Prairie	N. Forest	Total Funding
Restore	-	-	\$200,000	-	-	\$200,000
Protect in Fee with State PILT Liability	-	-	\$7,815,000	-	-	\$7,815,000
Protect in Fee w/o State PILT Liability	-	-	-	-	-	-
Protect in Easement	-	-	\$5,752,800	-	-	\$5,752,800
Enhance	-	-	\$2,817,800	-	-	\$2,817,800
<b>Total</b>	<b>-</b>	<b>-</b>	<b>\$16,585,600</b>	<b>-</b>	<b>-</b>	<b>\$16,585,600</b>

**Average Cost per Acre by Resource Type (Table 5)**

Type	Wetland	Prairie	Forest	Habitat
Restore	-	\$1,000	\$1,000	-
Protect in Fee with State PILT Liability	-	-	-	\$12,023
Protect in Fee w/o State PILT Liability	-	-	-	-
Protect in Easement	-	-	-	\$4,358
Enhance	-	\$900	\$892	\$11,570

**Average Cost per Acre by Ecological Section (Table 6)**

Type	Metro/Urban	Forest/Prairie	SE Forest	Prairie	N. Forest
Restore	-	-	\$1,000	-	-
Protect in Fee with State PILT Liability	-	-	\$12,023	-	-
Protect in Fee w/o State PILT Liability	-	-	-	-	-
Protect in Easement	-	-	\$4,358	-	-
Enhance	-	-	\$1,105	-	-

**Target Lake/Stream/River Feet or Miles**

2

## Parcels

### Sign-up Criteria?

[Yes - Sign up criteria is attached](#)

### Explain the process used to identify, prioritize, and select the parcels on your list:

For Protection in Fee Simple, parcels are prioritized based on:

- Location within a Conservation Opportunity Area or Area of Significant Native Biodiversity (allows for large landscape management and management efficiencies, i.e. large scale Rx fire)
- Presence of Minnesota Biological Survey mapped native plant communities
- Parcels equal to or greater than 80 acres in size are strongly preferred
- Proximity to a state-owned parcel
- A Conservation Partner willing to accept the property/meets partner objectives (SNA, WMA, Forestry)
- Must have a willing seller

Additionally, the Land Trust uses the attached criteria to prioritize conservation easement parcels currently on and not currently on the parcel list. All protection parcels will be added to the parcel list before incurring any expenses in accordance with LSOHC guidance.

### Restore / Enhance Parcels

Name	County	TRDS	Acres	Est Cost	Existing Protection	Description
Lone Pine Bluff	Fillmore	10208203	25	\$37,500	Yes	Lone Pine Invasive Species Herbicide and Interseeding
Schueler Bluffs	Fillmore	10408203	100	\$75,000	Yes	Invasive Species Removal and Structural Treatment with seeding/planting
Schueler Pasture	Fillmore	10408203	50	\$75,000	Yes	Prairie Restoration
Brownsville Bluff (Hey) phase 2	Houston	10304226	20	\$100,000	Yes	Oak woodland enhancement at the top of bluff prairie
Dougherty Tract	Houston	10307231	75	\$75,000	Yes	Dougherty Tract Invasives + Seeding/Enhancement
Kronseder Burn Unit	Houston	10105213	500	\$8,000	Yes	Burn Unit Prep
Vinegar Ridge Bluffs	Houston	10407227	200	\$175,000	Yes	Invasive Species Removal and Seeding/Planting with structural treatment
Wet Bark Ag Fields	Houston	10307211	100	\$350,000	Yes	Direct Hardwood Seeding
Wet Bark Bluffs 1	Houston	10307214	100	\$20,000	Yes	Invasive Species Removal and Seeding/Planting
Wet Bark Bluffs 2	Houston	10307212	50	\$100,000	Yes	Invasive Species Removal and Seeding/Planting
Evergreen Acres (Basballe et al. 1) phase 2	Olmsted	10814226	15	\$75,000	Yes	Oak woodland enhancement
HCVF - North Fork	Olmsted	10711202	100	\$25,000	Yes	Invasive Species Removal and Structural Treatment
ST Whitewater North Branch - Olmsted	Olmsted	10711202	100	\$10,000	Yes	Management unit in Whitewater WMA with mix of floodplain and upland forest and prairie
East Indian Creek (Newman)	Wabasha	10910223	10	\$50,000	Yes	Bluff prairie enhancements
ST Whitewater Hoosier Ridge	Wabasha	10910235	200	\$10,000	Yes	Management unit in Whitewater WMA with mix of floodplain and upland forest and prairie

ST Whitewater North Branch - Wabasha	Wabasha	10811234	100	\$10,000	Yes	Management unit in Whitewater WMA with mix of floodplain and upland forest and prairie
West Indian Creek	Wabasha	10911221	200	\$40,000	Yes	Invasive Species Removal (Hunt and Peck)
Zumbro Bottoms Burn Units	Wabasha	11011222	700	\$10,000	Yes	Burn Unit Prep
Bronk North Burn Units	Winona	10708214	700	\$80,000	Yes	Burn Unit Prep, invasive species control + TSI
Burnt Oaks Savanna	Winona	10810214	150	\$25,000	Yes	Invasive Species Removal and Seeding/Planting
HCVF - Cuthrell Valley	Winona	10810223	150	\$150,000	Yes	Invasive Species Removal and Structural Treatment
HCVF - Historic Valley	Winona	10810223	50	\$10,000	Yes	Invasive Species Removal and Seeding/Planting
HCVF - Lupine Valley Savanna	Winona	10810201	150	\$50,000	Yes	Invasive Species Removal and Seeding/Planting
HCVF - South Fork	Winona	10710236	50	\$15,000	Yes	Invasive Species Removal to buffer Algific Talus Slope
Hwy 26 Bluff	Winona	10710211	50	\$10,000	Yes	Invasive Species Removal and Seeding/Planting
LaMoille West Burn Units	Winona	10606212	500	\$8,000	Yes	Burn Unit Prep and bluff prairie enhancement
Marnach Valley Bluff	Winona	10810228	25	\$15,000	Yes	Structural Treatment and Seeding/Planting
Rollingstone (Speltz)	Winona	10808232	5	\$25,000	Yes	Bluff prairie enhancement
ST Whitewater Beaver Creek	Winona	10810216	200	\$10,000	Yes	Management unit in Whitewater WMA with mix of floodplain and upland forest and prairie
ST Whitewater Callahans	Winona	10707219	100	\$10,000	Yes	Management unit in Whitewater WMA with mix of floodplain and upland forest and prairie
ST Whitewater Demonstration Farm	Winona	10710223	100	\$10,000	Yes	Management unit in Whitewater WMA with mix of floodplain and upland forest and prairie
ST Whitewater Fire Tower	Winona	10710210	200	\$10,000	Yes	Management unit in Whitewater WMA with mix of floodplain and upland forest and prairie
ST Whitewater Glendale Hollow	Winona	10810203	100	\$10,000	Yes	Management unit in Whitewater WMA with mix of floodplain and upland forest and prairie
ST Whitewater Governor Ridge	Winona	10810216	200	\$10,000	Yes	Management unit in Whitewater WMA with mix of floodplain and upland forest and prairie
ST Whitewater Hubeleins	Winona	10710235	100	\$10,000	Yes	Management unit in Whitewater WMA with mix of floodplain and upland forest and prairie
ST Whitewater Kramer Ravine	Winona	10710202	200	\$10,000	Yes	Management unit in Whitewater WMA with mix of floodplain and upland forest and prairie

ST Whitewater Leisen Ridge	Winona	10710212	200	\$10,000	Yes	Management unit in Whitewater WMA with mix of floodplain and upland forest and prairie
ST Whitewater North Branch - Winona	Winona	10710206	100	\$10,000	Yes	Management unit in Whitewater WMA with mix of floodplain and upland forest and prairie
ST Whitewater Siebenaler	Winona	10810214	100	\$10,000	Yes	Management unit in Whitewater WMA with mix of floodplain and upland forest and prairie
ST Whitewater Trout Valley	Winona	10810212	100	\$10,000	Yes	Management unit in Whitewater WMA with mix of floodplain and upland forest and prairie
ST Whitewater Turkey Valley	Winona	10810226	200	\$10,000	Yes	Management unit in Whitewater WMA with mix of floodplain and upland forest and prairie
Turkey Valley Savanna	Winona	10810226	100	\$25,000	Yes	Invasive Species Removal and Seeding/Planting
WW Ag Fields	Winona	10810226	50	\$75,000	Yes	Prairie Restoration

### Protect in Fee Parcels

Name	County	TRDS	Acres	Est Cost	Existing Protection
William Pease WMA Addition	Fillmore	10411207	100	\$1,000,000	No
Dorer State Forest Addition - Minneiska	Winona	10809202	142	\$900,000	No
Dorer State Forest Addition - Weber Springs	Winona	10505228	80	\$500,000	No
Whitewater WMA Main III	Winona	10809205	40	\$200,000	No

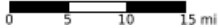
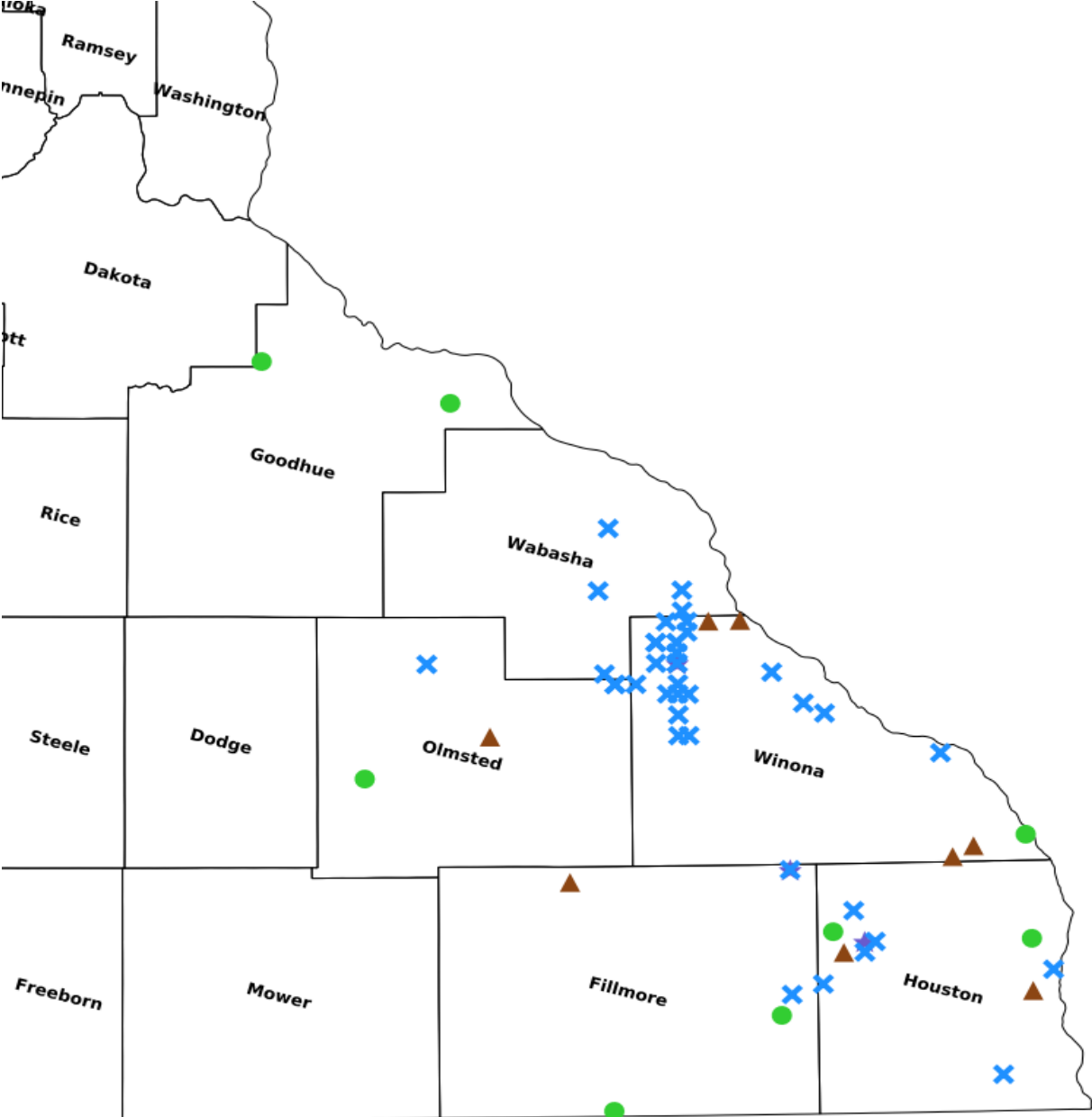
### Protect in Easement Parcels

Name	County	TRDS	Acres	Est Cost	Existing Protection
South Fork Root River - MLT	Fillmore	10208216	60	\$288,000	No
Upper Iowa River - MLT	Fillmore	10111235	165	\$775,000	No
Cannon River - MLT	Goodhue	11316231	80	\$445,000	No
Wells Creek - MLT	Goodhue	11213219	60	\$120,000	No
Butterfield Creek - MLT	Houston	10304209	130	\$390,000	No
Daley Creek - MLT	Houston	10307205	300	\$750,000	No
Zumbro River - MLT	Olmsted	10615223	188	\$760,000	No
Mississippi River - MLT	Winona	10504220	167	\$700,000	No

### Protect Parcels with Buildings

Name	County	TRDS	Acres	Est Cost	Existing Protection	Buildings	Value of Buildings
Dorer State Forest Addition - Pine Creek	Houston	10505231	66	\$450,000	No	1	\$0
Dorer State Forest Addition - Reno Unit II	Houston	10204204	217	\$1,900,000	No	2	\$47,700
Yucatan WMA Addition	Houston	10307216	217	\$2,100,000	No	3	-
Haverhill WMA Addition	Olmsted	10713235	80	\$1,000,000	No	1	\$32,300

Parcel Map



- Protect in Easement
- ▲ Protect in Fee with PILT
- Protect in Fee W/O PILT
- ★ Restore
- ✕ Enhance
- ⊕ Other

# Southeast Minnesota Protection & Restoration



Photo: Yucatan Wildlife Management Area – 967 acres permanently protected, restored, and enhanced by this program.

Minnesota’s Blufflands are uniquely rich in both scenery and wildlife. High bluffs, deep valleys, and winding trout streams support incredible biodiversity. Southeast Minnesota holds the highest concentration of Species of Greatest Conservation Need, yet less than 5% of this critical landscape is permanently protected.

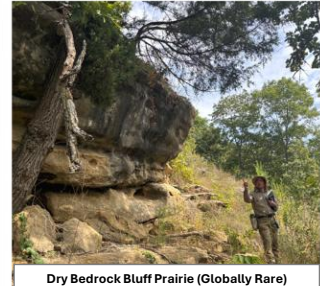
Our program is helping change that—we’ve protected nearly 17 square miles of habitat and improved almost 19 more. With additional funding, we will continue securing lasting gains for wildlife in Minnesota’s most important and least protected region.

**Proposal Request**  
\$16,585,600

**Leverage**  
\$791,400

**Acres Protected**  
1,970

**Acres Restored and Enhanced**  
2,750



Dry Bedrock Bluff Prairie (Globally Rare)



Oak Savanna (Globally Rare)



Algific Talus Slope (Globally Rare)

Splendid Tiger Beetle  
(Special Concern)



Snow Trillium  
(Special Concern)



Leonard’s Skipper  
(Special Concern)



Timber Rattlesnake  
(Endangered)



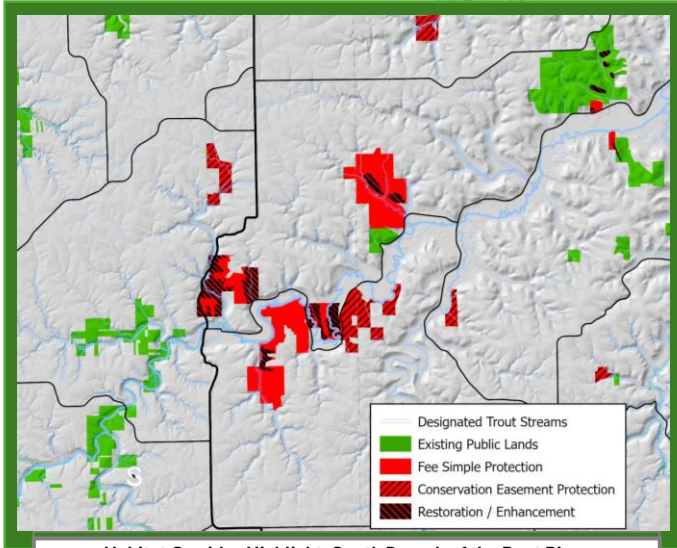
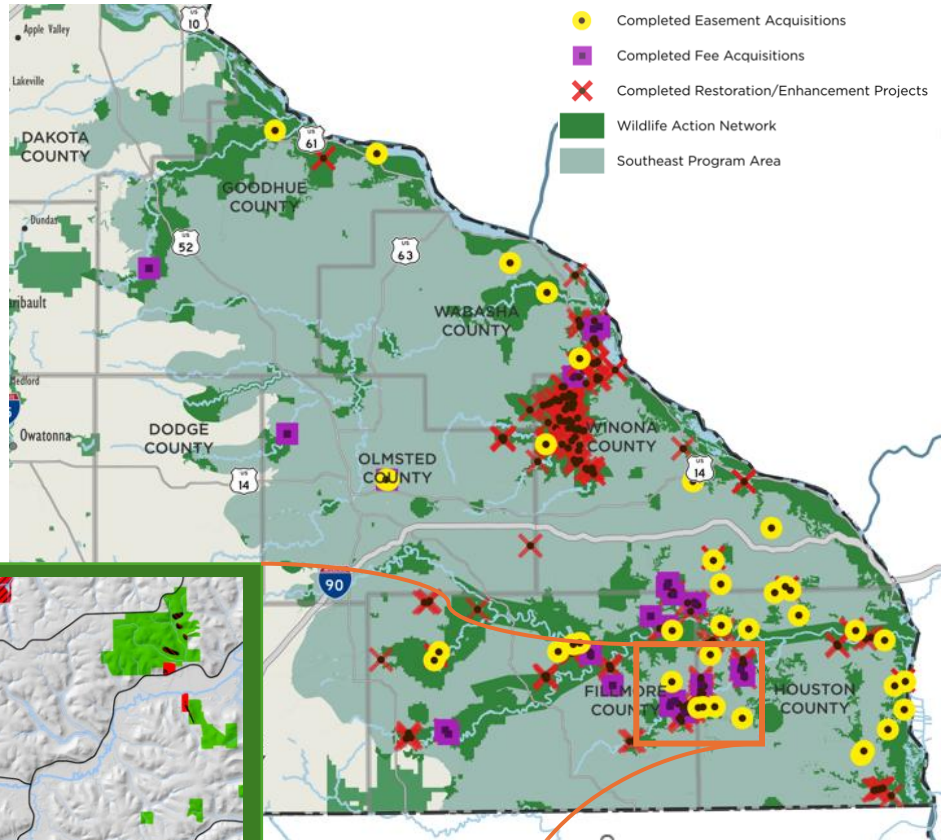
Edible Valerian  
(Threatened)



# Southeast Minnesota Protection and Restoration Program Impact Map



Prairie Enhancement Site at Yucatan WMA



Habitat Corridor Highlight: South Branch of the Root River

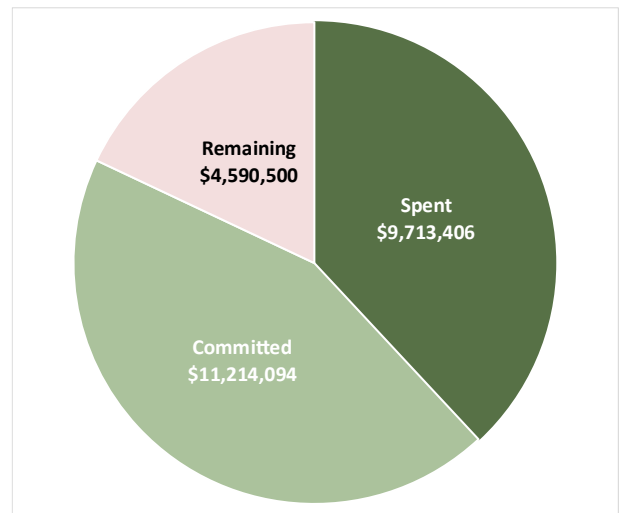
Through sustained efforts in priority areas, we can accomplish significant results at a landscape scale. One example is the South Fork of the Root River, where we've protected 5 square miles along a resilient corridor connecting two large State Forest units.

## Species of Greatest Conservation Need (SGCN) Impacted By Program

SGCN Category	# of Occurrences	# of Species
Vertebrate Animal	1995	31
Vascular Plant	231	56
Invertebrate Animal	494	24
Fungus	1	1
<b>Total</b>	<b>2721</b>	<b>112</b>

Across all open appropriations, **only 18% of funds remain** that are not already contractually obligated or committed to an active project.

Remaining unspent funds are largely dedicated to ongoing personnel and professional service costs necessary to complete active projects in 2026 and 2027.



Status of Program Funding (Open and Pending Appropriations)