



## Lessard-Sams Outdoor Heritage Council

Dakota County Habitat Protection/Restoration Phase IX  
ML 2027 Request for Funding

---

### General Information

**Date:** 06/22/2026

**Proposal Title:** Dakota County Habitat Protection/Restoration Phase IX

**Funds Requested:** \$4,942,400

**Confirmed Leverage Funds:** -

**Is this proposal Scalable?:** Yes

### Manager Information

**Manager's Name:** Alexander Scurto

**Title:** Senior Project Manager

**Organization:** Dakota County

**Address:** 14955 Galaxie Avenue

**City:** Apple Valley, MN 55124

**Email:** alex.scurto@co.dakota.mn.us

**Office Number:** 952-891-7827

**Mobile Number:** 630-577-7767

**Fax Number:**

**Website:** www.co.dakota.mn.us

### Location Information

**County Location(s):** Dakota.

**Eco regions in which work will take place:**

Metro / Urban

Southeast Forest

**Activity types:**

Protect in Easement

Restore

**Priority resources addressed by activity:**

Habitat

Wetlands

Prairie

Forest

**Narrative****Abstract**

This project will restore approximately 1,361 acres of permanently protected, or soon to be protected, habitat and acquire approximately 176 acres of permanent conservation easements. Project sites include converting cultivated areas to native habitat in cities and townships throughout the county, including forest, grassland, riparian areas, and other wetlands. This initiative includes identified sites and flexibility for opportunities that will arise. This project will allow the County to continue its integrated comprehensive and successful land conservation efforts through its partnership with the LSOHC and others.

**Design and Scope of Work**

Historic settlement, modern-day development, and agriculture have replaced, degraded, and fragmented natural resource systems throughout Dakota County. The project scope and scale encompass some of the best natural resource features found in the metropolitan region, across urban, suburban, and rural landscapes. A sound fiscal and prescriptive ecological systems approach to conservation, attempts to balance the interests, rights, and responsibilities of private landowners, with the public's concerns about water and habitat quality and protection.

The November 2020, Land Conservation Plan for Dakota County (Plan) collectively identifies, coordinates, and prioritizes future land protection and management needs on public and private properties throughout the County. This Plan reflects one of four County Board goals of "a healthy environment with quality natural areas." This Plan is being incorporated into a comprehensive, County-wide Natural Resource Systems Plan in 2026, through which the County continues to effectively work with a variety of agencies and organizations to implement land protection. Since 2002, the County approved plans and implemented programs to preserve natural areas and quality working land. The County developed conservation policy, project evaluation criteria, and practices to acquire, monitor, and administer 127 conservation easements, totaling 9,785 acres, and acquire or assist other public entities in acquiring 33 properties totaling 2,274 acres, for almost 12,000 total acres permanently protected. The Plan identifies over 75,000 acres of important conservation lands within 24 preliminary Conservation Focus Areas (CFAs), of which 32,500 acres are already protected. The CFAs encompass a wide variety of habitats throughout the County, including 28 specific native communities, with 25 Species of Greatest Conservation Need. Land outside the CFAs is also eligible for conservation, if it meets certain criteria.

All permanent easements require Natural Resource Management Plans (NRMPs) that reflect existing ecosystem health and recommend potential restoration management strategies, including workplans and budgets. Initial implementation is also required, using an adopted public-private funding formula that includes a maintenance component. A Natural Resource Management Agreement (MA) is signed by the landowner and County, identifying NRMP priorities, activities, responsibilities, shared costs, and schedules. The proposed habitat restoration and enhancement projects in this funding request are based on these workplans. This project has direct benefits to fish, game, and wildlife, beyond increased and interconnected habitat.

Additionally, the City-County Conservation Collaborative (CCCC or 4C) initiative was launched in 2021, with the County and cities being the primary participants. The first application round resulted in eight natural habitat restoration project applications from five cities. NRMPs were developed for each project, and implementation has begun in several suburban park natural areas that do not include park facilities or paved trails.

The proposed and anticipated acquisition projects involve riparian areas along the Minnesota, Mississippi, Cannon and Vermillion Rivers. Additional habitat focuses include woodlands, wetlands, hydric soil areas, and unique landscape features and ecosystems.

Environmental Audits are completed for all projects. Baseline Property Reports are prepared for easements that record the condition of the easement area at the time it's acquired by the County.

### **Explain how the proposal addresses habitat protection, restoration, and/or enhancement for fish, game & wildlife, including threatened or endangered species conservation**

The proposal integrates a number of state and regional County plans, involving different aspects of habitat and wildlife. In 2017, the County Board approved a Natural Resource Management System Plan (NRMSP) for all regional parks, regional greenways and conservation easements located throughout the County. Vegetation, water, and wildlife were the three main elements for each land type. The NRMSP identified rare and endangered species, and species of greatest conservation need throughout the County, based on different data sources. The NRMSP includes different Natural Resource Management Plan (NRMP) templates of each property type that will provide much more detail for individual sites that typically include a variety of habitat and plant community types. The 2020 Land Conservation Plan for Dakota County (LCP) identifies over 42,300 acres of unprotected land within 24 preliminary Conservation Focus Areas (CFAs), including more than 14,000 acres in 90 potential wetland restoration basins. The CFAs encompass a wide variety of habitats throughout the County, including 28 specific native communities and 25 Species of Greatest Conservation Need. These habitats/native communities and associated species include, but are not limited to: Forest - northern long-eared bat, American woodcock, oven bird, rose-breasted grosbeak, least flycatcher, red-shouldered hawk; Prairies and Grasslands- badger, Franklin's ground squirrel, prairie vole, loggerhead shrike, eastern meadowlark, grasshopper sparrow and regal fritillary; Lakes, Ponds and Rivers- common snapping turtle and smooth soft shell turtle; Wetlands- sedge wren, sand hill crane, Blanding's turtle, and dragonflies. The County continues to assemble baseline data and will prioritize the habitats preferred by these species for acquisition, restoration and enhancement activities. The County is currently drafting a new Natural Systems Plan that will combine the NRMSP and the LCP into one comprehensive plan to guide natural resource protection and management into the future.

### **What are the elements of this proposal that are critical from a timing perspective?**

Dakota County works with willing sellers and wants to continue the momentum of its ongoing conservation programs, with an increased focus on natural resource management. The Land Conservation Plan for Dakota County includes a valuable opportunity to work even more collaboratively with other public entities, specifically through the City-County Conservation Collaborative. Staff continues to see marginal agricultural land converted to row crops and installation of more drain tile. Creating larger scale restoration areas within the rural agricultural landscape can provide multiple public benefits. Residential development has increased significantly in some cities, and natural areas are attractive focal points for new development. Through its programs, the County can expand protected habitats and close gaps between previously protected lands within multipurpose corridors.

**Describe how the proposal expands habitat corridors or complexes and/or addresses habitat fragmentation:**

There was significant overlap between the County Biological Survey, the 2002 Farmland and Natural Area Protection Plan, and the Metro Conservation Corridors in identifying habitat complexes and key corridors. Based on updated land cover mapping, DNR rare species data, the Vermillion Corridor Plan, new SNA analysis, previously protected areas, County and local comprehensive plans, watershed plans, and park and greenway plans, the County has refined its priority natural areas and the Metro Conservation Corridor Focus Areas. Using Dakota County's Geographic Information Systems (GIS) tools and expertise, County staff can further prioritize areas where important protection and improvement opportunities exist, using other available data layers, such as ownership parcels, soils, aspect, historical photography, and LiDAR. Project selection criteria have been revised to reflect this refined vision, and further refinements will occur as up-to-date information and data are collected. The Natural Systems Plan being drafted currently, will reflect the most current data and information available and include the 24 primary Conservation Focus Areas and several additional sub-areas, based on existing water resources, other natural habitats and existing protected land where the County plans to target resources.

In a substantial portion of original natural landscapes in the County were significantly altered through agriculture. Extensive wetland areas were drained, filled, and tiled. County staff consulted with BWSR and DNR staff to use LiDAR-based GIS tools to target wetland restoration projects. The tools require a hydrologically-conditioned digital elevation model (DEM) that was previously unavailable within the County. Dakota County staff created a "base-level" hydrologically-conditioned DEM and ran a series of ArcGIS tools developed by the DNR/BWSR. The GIS tools predicted hydric soils and wetlands via the Compound Topographic Index, smoothed ditches, and created ditch plugs in the landscape to generate storage areas. The resulting areas were inventoried and prioritized based on area (acres) and volume (acre-feet). Then, a GIS dataset of known cultivated hydric soils, developed by the Dakota County Soil and Water Conservation District was used to refine the inventory. Finally, a map of restoration sites and list of property owners for 4,502 acres was developed for restoration program outreach and implementation.

**Which top 2 Conservation Plans referenced in MS97A.056, subd. 3a are most applicable to this project?**

Minnesota's Wildlife Management Area Acquisition - The Next 50 Years

Outdoor Heritage Fund: A 25 Year Framework

**Which LSOHC section priorities are addressed in this proposal?**

**Metro / Urban**

Protect habitat corridors, with emphasis on the Minnesota, Mississippi, and St. Croix rivers (bluff to floodplain)

**Southeast Forest**

Protect, enhance, and restore habitat for fish, game, and nongame wildlife in rivers, cold-water streams, and associated upland habitat

**Describe how this project/program will produce and demonstrate a significant and permanent conservation legacy and/or outcomes for fish, game, and wildlife:**

Programs in Metropolitan Urbanizing Region:

Dakota County's goal is a network of natural land and riparian habitats that will connect corridors for wildlife and species of greatest conservation need. The County developed an integrated, long-term habitat protection system

involving public and private lands to provide multiple public benefits. Enlarging and improving existing protected habitat complexes and providing key connections will continue to be a focus. The County will prioritize its land protection and improvement efforts, in part, based on wildlife species, by continuing to devote staff time and resources to create baseline wildlife and habitat quality information and monitor indicator and other species seasonally/annually to determine if our efforts are producing the desired results over time and to adapt or re-prioritize as appropriate.

Programs in Southeast Forest Region:

Dakota County's goal is healthier populations of endangered, threatened, and special concern species, as well as more common species. A portion of the County is included in this region. The County will prioritize its land protection and improvement efforts, in part, based on priority wildlife species. The County will continue to devote staff time and resources to create baseline wildlife and habitat quality information and monitor indicator and other species seasonally/annually to determine if our efforts are producing the desired results over time and to adapt or re-prioritize as appropriate.

**If this project/program does not have permanent outcomes, describe why it is important to undertake at this time:**

N/A.

### Outcomes

**Programs in metropolitan urbanizing region:**

*A network of natural land and riparian habitats will connect corridors for wildlife and species in greatest conservation need ~ The County developed an integrated, long-term habitat protection system involving public and private lands to provide multiple public benefits. Enlarging and improving existing protected habitat complexes and providing key connections will continue to be a focus, with protected acres and shoreline as success indicators. The County will prioritize land protection and improvement efforts, in part, based on wildlife species by devoting staff time and resources to create baseline wildlife and habitat quality information and monitoring indicator and other species seasonally/annually to determine if our efforts are producing the desired results over time and to adapt or re-prioritize as appropriate.*

**Programs in southeast forest region:**

*Healthier populations of endangered, threatened, and special concern species as well as more common species ~ A small portion of the County is included in this region. Enlarging and improving existing protected habitat complexes and providing key connections will continue to be a focus, with protected acres and shoreline as success indicators. The County will prioritize its land protection and improvement efforts, in part, based on priority wildlife species. It will devote staff time and resources to create baseline wildlife and habitat quality information and monitoring indicator and other species seasonally/annually to determine if our efforts are producing the desired results over time and to adapt or re-prioritize as appropriate.*

**Per MS 97A.056, Subd. 24, Please explain whether the request is supplanting or is a substitution for any previous funding that was not from a legacy fund and was used for the same purpose.**

Dakota County's request for funding is not supplanting, nor is it a substitution for any previous funding that was not from a legacy fund.

## How will you sustain and/or maintain this work after the Outdoor Heritage Funds are expended?

The Dakota County Board has maintained a remarkable, 24-year commitment to land conservation, and established "a healthy environment and quality natural areas" as one of four priority goals. Adopting the 2020 Land Conservation Plan for Dakota County (LCP), maintaining dedicated natural resource staff, reorganizing departments to effectively achieve land conservation goals, approving capital improvement program budgets, and providing an operating budget for annual monitoring, are further evidence that the County has the interest, capacity and commitment to sustain this work. The County's Natural Resource Management System Plan (NRMSP) commits to maintaining areas after restoration and enhancement investments are made.

Approximately half the land protection/restoration work will occur on public lands and half on private lands, all designed to achieve maximum, fiscally efficient, conservation benefits. Relationship building, developing and implementing Natural Resource Management Plans (NRMPs) and Management Agreements, and annual monitoring, provide opportunities to share updated natural resource information and best management practices with landowners, and achieve a higher likelihood of increased private stewardship. The NRMSP, using a public/private cost-share formula, is further testament to this commitment. This comprehensive wildlife habitat and water quality approach on public and private lands provides the best opportunity to effectively protect and

### Actions to Maintain Project Outcomes

Year	Source of Funds	Step 1	Step 2	Step 3
2027	State, County, landowner or other project partner contribution	Restore and enhance existing and newly protected lands, and acquire easements and/or fee title	Monitor easements and restoration projects, and use adaptive management for restoration and enhancement activities	Monitor required landowner maintenance of restored areas over at least the next three years
2028	State, County, landowner or other project partner contribution	Restore and enhance existing and newly protected lands, and acquire easements and/or fee title	Monitor easements and restoration projects, and use adaptive management for restoration and enhancement activities	Monitor required landowner maintenance of restored areas over at least the next three years
2029	State, County, landowner or other project partner contribution	Restore and enhance existing and newly protected lands, and acquire easements and/or fee title	Monitor easements and restoration projects, and use adaptive management for restoration and enhancement activities	Monitor required landowner maintenance of restored areas over at least the next three years
2030	State, County, landowner or other project partner contribution	Restore and enhance existing and newly protected lands, and acquire easements and/or fee title	Monitor easements and restoration projects, and use adaptive management for restoration and enhancement activities	Monitor required landowner maintenance of restored areas over at least the next three years
2031	State, County, landowner or other project partner contribution	Restore and enhance existing and newly protected lands, and acquire easements and/or fee title	Monitor easements and restoration projects, and use adaptive management for restoration and enhancement activities	Monitor required landowner maintenance of restored areas over at least the next three years

2032	State, County, landowner or other project partner contribution	Restore and enhance existing and newly protected lands, and acquire easements and/or fee title	Monitor easements and restoration projects, and use adaptive management for restoration and enhancement activities	Monitor required landowner maintenance of restored areas over at least the next three years
------	--	--	--	---

**Provide an assessment of how your program may celebrate cultural diversity or reach diverse communities in Minnesota, including reaching low- and moderate-income households:**

The Land Conservation Plan for Dakota County includes goals, strategies and tactics designed to increase and enhance public involvement in natural resource protection and management and enhanced recreational access to conservation land. The new project eligibility and scoring criteria, developed to evaluate Land Conservation Program project applications, includes incentives when a project will provide natural habitat and open space opportunities for underserved communities that include BIPOC. Distance from a qualified census tract will be used to determine the project score for this factor.

**Activity Details**

**Requirements**

**Is the land you plan to acquire (easement) free of any other permanent protection?**

Yes

**Will restoration and enhancement work follow best management practices including MS 84.973 Pollinator Habitat Program?**

Yes

**Is the restoration and enhancement activity on permanently protected land per 97A.056, Subd 13(f), tribal lands, and/or public waters per MS 103G.005, Subd. 15 or on lands to be acquired in this program?**

Yes

**Where does the activity take place?**

WMA

SNA

AMA

Permanently Protected Conservation Easements

County/Municipal

Public Waters

**Land Use**

**Will there be planting of any crop on OHF land purchased or restored in this program, either by the proposer or the end owner of the property, outside of the initial restoration of the land?**

Yes

**Explain what will be planted and include the maximum percentage of any acquired parcel that would be planted into foodplots by the proposer or the end owner of the property:**

There might be situations where portions of the property may be cultivated. As part of a negotiated sale, the owner may be allowed to continue cultivating the same land for a short, defined time as defined and allowed in the Natural Resource Management Plan (NRMP). In other situations, it may be advantageous to allow a final soybean crop, which can enhance the restoration process by reducing weeds and residue. Also, in some NRMP-approved situations, food plots for wildlife are allowed within a natural area easement.

**Will insecticides or fungicides (including neonicotinoid and fungicide treated seed) be used within any activities of this proposal either in the process of restoration or use as food plots?**

No

**Will the eased land be open for public use?**

Yes

**Describe the expected public use:**

The County has acquired some easements that are open for limited public use. In all cases, the decision to allow public use is determined by the landowner, and is often granted to responsible, conservation-minded and purposed groups and individuals.

**Will new trails or roads be developed or improved, beyond those used for maintenance and management, as a result of the proposed acquisition?**

Yes

**Describe the types of trails or roads and the allowable uses:**

It is possible that some acquisition projects may result in the creation of new, soft-surface trails for low-impact recreational use by landowners and/or allowed guests, and in part, to assist in access for natural resource restoration, management and ongoing maintenance.

**How will maintenance and monitoring be accomplished?**

The landowner will be responsible for all maintenance. A jointly developed NRMP will determine any changes to trails and roads. Review of trails and roads are part of the County's annual monitoring process.

**Will the land that you acquire (fee or easement) be restored or enhanced within this proposal's funding and availability?**

Yes

### Previous OHF Appropriations

Have you received OHF dollars through LSOHC for this program or project in the past?

Yes

Are there any of these past appropriations still OPEN?

Yes

If needed, please include any explanation of unspent funds.

Several easement acquisition parcels did not come to fruition and as left an unspent remainder for the grant award. ML 2022 funds are still being spent on active easement acquisition and restoration projects.

### Open OHF Appropriations - Data from Most Recent Status Update

Project	Funding Amount Received	Amount Spent to Date	Funding Remaining	% Spent to Date
ML 2022 - Dakota County Habitat Protection/Restoration Phase VIII	\$6,066,000	\$1,781,400	\$4,284,600	29.37%
ML 2019 - Dakota County Habitat Protection/Restoration Phase VII	\$3,516,000	\$3,025,200	\$490,800	86.04%
ML 2018 - Dakota County Habitat Protection/Restoration Phase VI	\$2,288,000	\$1,212,500	\$1,075,500	52.99%
<b>Totals</b>	<b>\$11,870,000</b>	<b>\$6,019,100</b>	<b>\$5,850,900</b>	<b>50.71%</b>

### Timeline

Activity Name	Estimated Completion Date
Easement and/or Fee Title Acquisition	June 30, 2031
Restoration	June 30, 2032

## Budget

### Totals

Item	Funding Request	Total Leverage	Leverage Source	Total
Personnel	-	\$1,800,000	Dakota County	\$1,800,000
Contracts	\$3,664,900	-	-	\$3,664,900
Fee Acquisition w/ PILT	-	-	-	-
Fee Acquisition w/o PILT	-	-	-	-
Easement Acquisition	\$1,277,500	-	-	\$1,277,500
Easement Stewardship	-	-	-	-
Travel	-	-	-	-
Professional Services	-	-	-	-
Direct Support Services	-	-	-	-
DNR Land Acquisition Costs	-	-	-	-
Capital Equipment	-	-	-	-
Other Equipment/Tools	-	-	-	-
Supplies/Materials	-	-	-	-
DNR IDP	-	-	-	-
<b>Grand Total</b>	<b>\$4,942,400</b>	<b>\$1,800,000</b>	-	<b>\$6,742,400</b>

### Personnel

Position	Annual FTE	Years Working	Funding Request	Total Leverage	Leverage Source	Total
Land Acquisition/Parks Natural Resources/Real Estate Office/ County Attorney/Survey/Finance/ Contracts/Support Staff/Etc.	3.0	5.0	-	\$1,800,000	Dakota County	\$1,800,000

**Amount of Request:** \$4,942,400

**Amount of Leverage:** \$1,800,000

**Leverage as a percent of the Request:** 36.42%

**DSS + Personnel:** -

**As a % of the total request:** 0.0%

**Easement Stewardship:** -

**As a % of the Easement Acquisition:** -

### Leverage Funding Table

	Leverage Amount Committed	Leverage Amount Confirmed (of Committed Funds)	Leverage Amount Anticipated	Total Leverage
Amount:	\$1,800,000	-	-	\$1,800,000
% of Total Leverage:	100.0%	0.0%	0.0%	

N/A

**Detail leverage sources and confirmation of funds:**

The County is contributing all County staff time, equivalent to approximately 3 FTEs over five years, totaling at least \$1,800,000 in value. Landowner and city contributions are also expected.

**Does this proposal have the ability to be scalable?**

Yes

**If the project received 50% of the requested funding**

**Describe how the scaling would affect acres/activities and if not proportionately reduced, why?**

The scaling may not proportionately reduce acres and activities, as County staff can't anticipate what project applications will be received, and which ones will move forward to completion. If this proposal is scaled back, County staff can only estimate what the lower acreages and lesser activities might be.

**Describe how personnel and DSS expenses would be adjusted and if not proportionately reduced, why?**

The scaling may not proportionately reduce personnel and DDS expenses, because with a voluntary program, County staff can't anticipate what project applications will be received, and which ones will move forward to completion. It's possible that many smaller projects could take the place of fewer larger projects.

**If the project received 30% of the requested funding**

**Describe how the scaling would affect acres/activities and if not proportionately reduced, why?**

The scaling may not proportionately reduce acres and activities, as County staff can't anticipate what project applications will be received, and which ones will move forward to completion. If this proposal is scaled back, County staff can only estimate what the lower acreages and lesser activities might be.

**Describe how personnel and DSS expenses would be adjusted and if not proportionately reduced, why?**

The scaling may not proportionately reduce personnel and DDS expenses, because with a voluntary program, County staff can't anticipate what project applications will be received, and which ones will move forward to completion. It's possible that many smaller projects could take the place of fewer larger projects.

**What other dedicated funds may collaborate with or contribute to this proposal?**

**Contracts**

**What is included in the contracts line?**

The amount noted in the contracts line is inclusive of all anticipated contract for service totals spanning the grant term. Dakota County plans to enter into agreements with qualified contractors who will be conducting restoration planning and carrying out restoration activities on the identified restoration parcels.

**Federal Funds**

**Do you anticipate federal funds as a match for this program?**

No

## Output Tables

### Acres by Resource Type (Table 1)

Type	Wetland	Prairie	Forest	Habitat	Total Acres
Restore	309	197	473	382	1,361
Protect in Fee with State PILT Liability	0	0	0	0	0
Protect in Fee w/o State PILT Liability	0	0	0	0	0
Protect in Easement	3	108	40	25	176
Enhance	0	0	0	0	0
<b>Total</b>	<b>312</b>	<b>305</b>	<b>513</b>	<b>407</b>	<b>1,537</b>

### Restoration/Enhancement Acres of OHF Acquired Lands (Table 1a.1)

	RESTORE: Lands acquired in this proposal	RESTORE: Lands acquired with previous OHF appropriations (<5yrs old)	RESTORE Total	ENHANCE: Lands acquired in this proposal	ENHANCE: Lands acquired with previous OHF appropriations (<5yrs old)	ENHANCE Total
Protect in Fee with State PILT Liability	-	-	-	-	-	-
Protect in Fee w/o State PILT Liability	-	-	-	-	-	-
Protect in Easement	6	58	64	-	-	0
<b>Total</b>	<b>6</b>	<b>58</b>	<b>64</b>	<b>-</b>	<b>-</b>	<b>-</b>

### Restoration/Enhancement Acres Breakdown of Existing Protected Lands (Table 1a.2)

	RESTORE: Lands acquired with OHF	RESTORE: Lands NOT acquired with OHF	ENHANCE: Lands acquired with OHF	ENHANCE: Lands NOT acquired with OHF
DNR Lands (WMA, State Forests, etc.)	-	-	-	-
Non-DNR Lands (city, state, federal, etc.)	-	461	-	-
Easements	395	505	-	-
<b>Total</b>	<b>395</b>	<b>966</b>	<b>-</b>	<b>-</b>

### Total Requested Funding by Resource Type (Table 2)

Type	Wetland	Prairie	Forest	Habitat	Total Funding
Restore	\$1,000,700	\$378,200	\$1,305,300	\$980,700	\$3,664,900
Protect in Fee with State PILT Liability	-	-	-	-	-
Protect in Fee w/o State PILT Liability	-	-	-	-	-
Protect in Easement	\$30,000	\$733,000	\$394,500	\$120,000	\$1,277,500
Enhance	-	-	-	-	-
<b>Total</b>	<b>\$1,030,700</b>	<b>\$1,111,200</b>	<b>\$1,699,800</b>	<b>\$1,100,700</b>	<b>\$4,942,400</b>

### Acres within each Ecological Section (Table 3)

Type	Metro/Urban	Forest/Prairie	SE Forest	Prairie	N. Forest	Total Acres
Restore	1,292	0	69	0	0	1,361
Protect in Fee with State PILT Liability	0	0	0	0	0	0
Protect in Fee w/o State PILT Liability	0	0	0	0	0	0
Protect in Easement	176	0	-	0	0	176
Enhance	0	0	0	0	0	0
<b>Total</b>	<b>1,468</b>	<b>0</b>	<b>69</b>	<b>0</b>	<b>0</b>	<b>1,537</b>

**Total Requested Funding within each Ecological Section (Table 4)**

Type	Metro/Urban	Forest/Prairie	SE Forest	Prairie	N. Forest	Total Funding
Restore	\$3,514,900	-	\$150,000	-	-	\$3,664,900
Protect in Fee with State PILT Liability	-	-	-	-	-	-
Protect in Fee w/o State PILT Liability	-	-	-	-	-	-
Protect in Easement	\$1,277,500	-	-	-	-	\$1,277,500
Enhance	-	-	-	-	-	-
<b>Total</b>	<b>\$4,792,400</b>	<b>-</b>	<b>\$150,000</b>	<b>-</b>	<b>-</b>	<b>\$4,942,400</b>

**Average Cost per Acre by Resource Type (Table 5)**

Type	Wetland	Prairie	Forest	Habitat
Restore	\$3,238	\$1,919	\$2,759	\$2,567
Protect in Fee with State PILT Liability	-	-	-	-
Protect in Fee w/o State PILT Liability	-	-	-	-
Protect in Easement	\$10,000	\$6,787	\$9,862	\$4,800
Enhance	-	-	-	-

**Average Cost per Acre by Ecological Section (Table 6)**

Type	Metro/Urban	Forest/Prairie	SE Forest	Prairie	N. Forest
Restore	\$2,720	-	\$2,173	-	-
Protect in Fee with State PILT Liability	-	-	-	-	-
Protect in Fee w/o State PILT Liability	-	-	-	-	-
Protect in Easement	\$7,258	-	-	-	-
Enhance	-	-	-	-	-

**Target Lake/Stream/River Feet or Miles**

## Parcels

### Sign-up Criteria?

[Yes - Sign up criteria is attached](#)

### Explain the process used to identify, prioritize, and select the parcels on your list:

Relative to acquisition parcels, the County provides annual public notices to solicit pre-applications from willing landowners. Targeted mailings will be sent to chosen Conservation Focus Areas identified in the Land Conservation Plan for Dakota County (LCP). Other projects are identified through adopted park or greenway master plans.

Applications are evaluated for eligibility. Eligible applicants meet with County staff to discuss the Land Conservation Program in detail. Final applications are submitted for evaluation, scoring and ranking against other applications, and recommendations for continued consideration. County criteria were developed to reflect the LCP and are used to score projects based on location, natural resource components, financial considerations, commitment to stewardship, and ongoing habitat restoration and management. Recommended projects are appraised to determine easement or fee title value. Accepted offers from the County to purchase easements or fee title result in title work, surveys, legal description creation, and preparing jointly developed Natural Resource Management Plans (NRMPs) and baseline Property Reports for each easement project. Easement NRMPs are implemented through jointly developed Natural Resource Management Agreements between the County and the landowner that establish work plan responsibilities, mutual contributions toward restoration, and ongoing maintenance responsibilities. Relative to restoration parcels, County staff work with landowners and other partners most interested in restoring and enhancing natural resources on their property and identify restoration activities where significant need is apparent or sensitive natural resources are located.

### Restore / Enhance Parcels

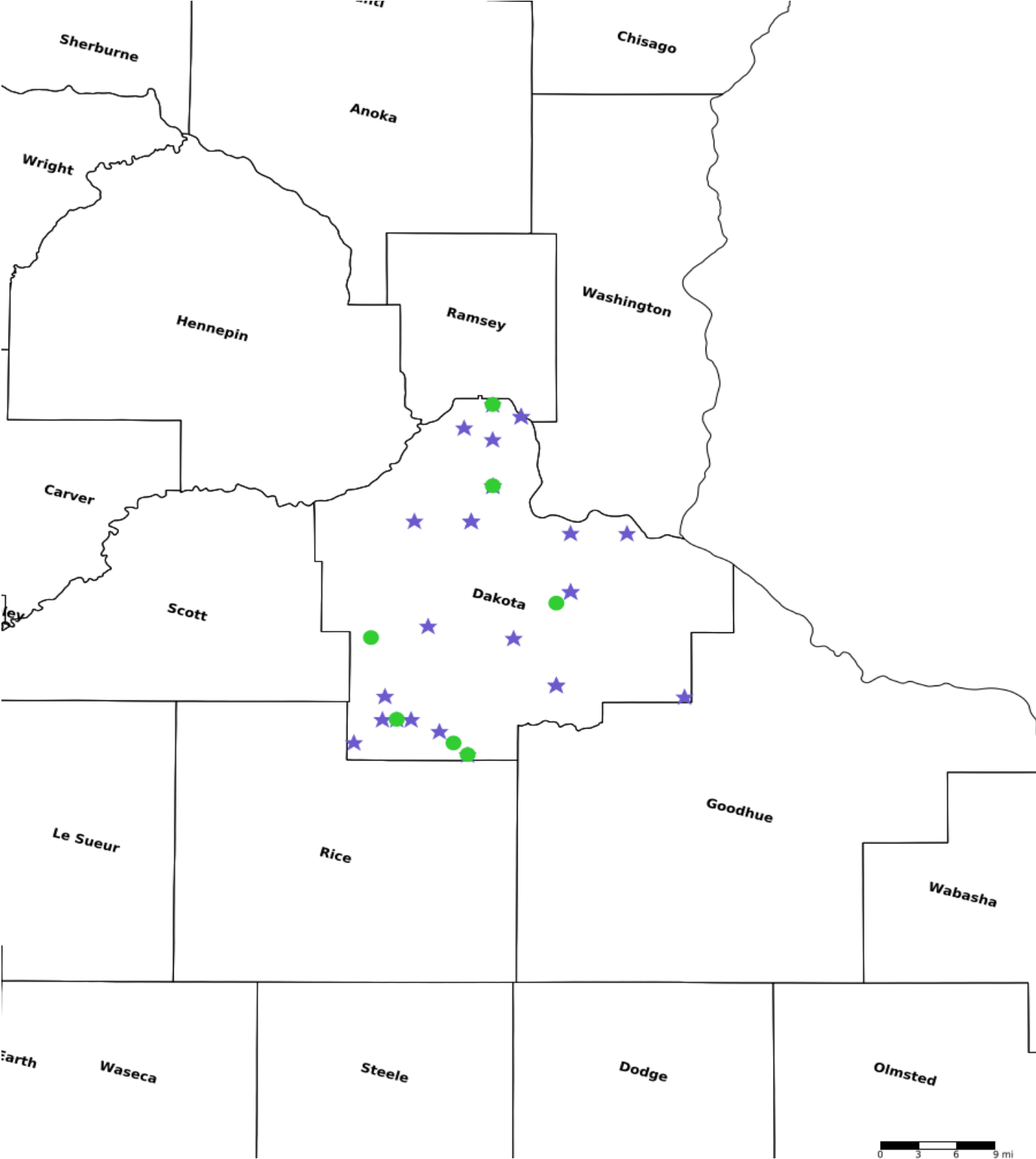
Name	County	TRDS	Acres	Est Cost	Existing Protection	Description
4C - Harmon-Salem	Dakota	02822232	39	\$150,000	Yes	City of Inver Grove Heights - Continued Habitat restoration.
4C - Mississippi River Greenway Sites	Dakota	02822222	60	\$50,000	Yes	City of Inver Grove Heights - Continued Habitat restoration.
4C - Seidl's	Dakota	02822222	36	\$80,000	Yes	City of Inver Grove Heights - Continued Habitat restoration.
Bartness	Dakota	02722220	6	\$135,000	Yes	City of Inver Grove Heights - Existing Wetland & Forest to be restored following easement acquisition.
Benjamin	Dakota	11517220	32	\$100,000	Yes	Nininger Township - Forest and Prairie restoration.
Boucher	Dakota	11418215	12	\$120,000	Yes	Vermillion Township - Continued Habitat restoration.
Chub Creek Park Conservation Area (Wicklund)	Dakota	11219218	59	\$142,000	Yes	Waterford Township - Continued Prairie, Wetland and Forest restoration.

Coughlin	Dakota	11220219	40	\$277,555	Yes	Greenvale Township - Wetland, Forest and Habitat restoration. Easement expected to be in place by 06/30/2026.
Dodge Nature Center	Dakota	02823225	174	\$250,000	Yes	City of Mendota Heights - Continued Habitat restoration.
Dudley - East	Dakota	11219228	18	\$189,300	Yes	Waterford Township - Forest restoration. Easement expected to be in place by 06/30/2026.
Gergen, Paul Jr.	Dakota	11318228	26	\$100,000	Yes	Hampton Township - New Forest restoration.
Haskell Street	Dakota	02822217	1	\$8,000	Yes	City of West St. Paul - Continued Habitat restoration.
Hoffmann	Dakota	11220210	21	\$50,000	Yes	Greenvale Township - New Habitat restoration
ISD200	Dakota	11418215	54	\$50,000	Yes	Vermillion Township - New Prairie and Wetland restoration.
Jennings	Dakota	11320233	110	\$200,000	Yes	Eureka Township - Continued Prairie, Wetland and Forest restoration.
Johnson	Dakota	11318228	43	\$50,000	Yes	Hampton Township - Continued Prairie and Forest restoration.
Knutson	Dakota	11220209	14	\$50,000	Yes	Greenvale Township - Continued Prairie and Wetland restoration
McMenomy	Dakota	11519216	51	\$142,000	Yes	City of Rosemount - Continued Forest restoration.
Melbo	Dakota	11319201	5	\$10,000	Yes	Castle Rock Township - Continued Prairie and Forest restoration.
Miesville Ravine Park Reserve	Dakota	11317236	81	\$400,000	Yes	Douglas Township - Continued Prairie and Forest restoration.
Pylkas	Dakota	02722220	3	\$75,000	Yes	City of Inver Grove Heights - Continued Forest restoration.
Ruppe	Dakota	11220211	18	\$50,000	Yes	Greenvale Township - Continued Prairie, Wetland restoration.
Spring Lake Park Reserve - Unit 16	Dakota	11518222	35	\$246,000	Yes	City of Rosemount - Continued Habitat restoration.
Vermillion Confluence Park Conservation Area	Dakota	11420236	143	\$600,000	Yes	City of Farmington - New Prairie and Wetland restoration.
West Lebanon Hills	Dakota	11520214	210	\$85,000	Yes	City of Apple Valley - Continued Prairie and Forest restoration.
Wolfson	Dakota	11519216	6	\$55,000	Yes	City of Rosemount - Continued Forest restoration.

**Protect in Easement Parcels**

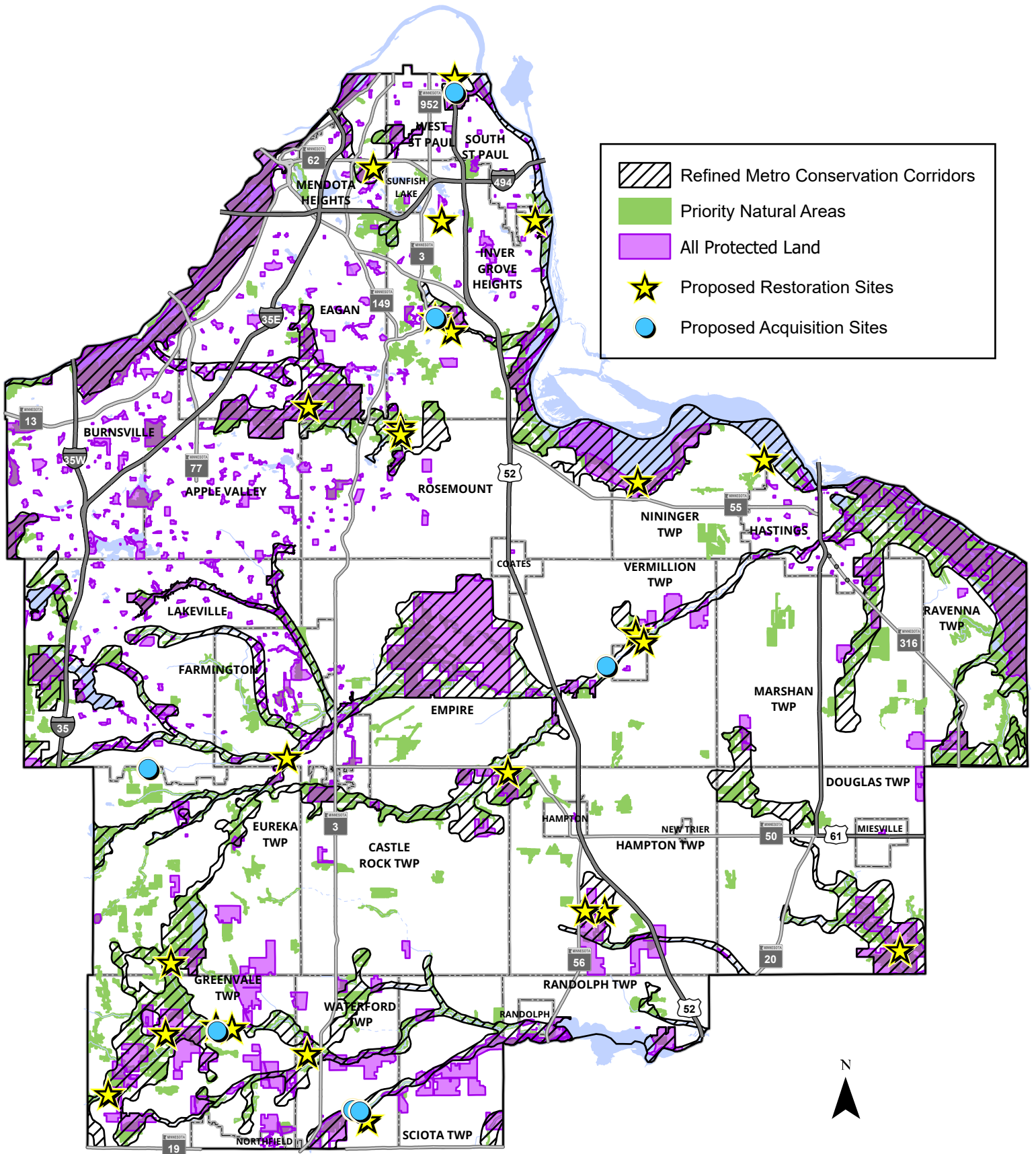
<b>Name</b>	<b>County</b>	<b>TRDS</b>	<b>Acres</b>	<b>Est Cost</b>	<b>Existing Protection</b>
Bartness	Dakota	02722220	6	\$137,000	No
Dudley - Phase Two	Dakota	11219228	40	\$300,000	No
Groethe	Dakota	02822217	1	\$10,000	No
Kluver	Dakota	11220210	25	\$120,000	No
Nelson	Dakota	11219220	49	\$367,500	No
Poepl	Dakota	11418221	37	\$163,000	No
Sauber	Dakota	11320205	18	\$180,000	No

Parcel Map



- Protect in Easement
- ▲ Protect in Fee with PILT
- Protect in Fee W/O PILT
- ★ Restore
- ✕ Enhance
- ⊕ Other

# Dakota County - Acquisition and Restoration General Locations



Note: The mapped locations are currently anticipated projects or are generally located within larger Conservation Focus Areas. Other locations are anticipated as new project applications are submitted through the voluntary, Dakota County Land Conservation Program.

