



Lessard-Sams Outdoor Heritage Council

Enhanced Public Land - Grasslands - Phase VIII

ML 2025 Request for Funding

General Information

Date: 05/31/2024

Proposal Title: Enhanced Public Land - Grasslands - Phase VIII

Funds Requested: \$6,388,300

Confirmed Leverage Funds: -

Is this proposal Scalable?: Yes

Manager Information

Manager's Name: Sabin Adams

Title: MN Public Lands Manager

Organization: Pheasants Forever

Address: 1783 Buerkle Circle

City: St. Paul, MN 55110

Email: sadams@pheasantsforever.org

Office Number: 320-250-6317

Mobile Number: 3202506317

Fax Number:

Website: www.pheasantsforever.org

Location Information

County Location(s): Douglas, Clay, Blue Earth, Pope, Traverse, Becker, Carver, Swift, Todd, Lac qui Parle, Meeker, Lincoln, Chippewa, Stevens, Jackson, Big Stone, Faribault, Freeborn, Rock, Murray, Lyon, Cottonwood, Otter Tail, Wright, Martin, Kandiyohi, Yellow Medicine, Nobles, Mahnommen, Mower, Fillmore, Grant, Renville and Watonwan.

Eco regions in which work will take place:

- Forest / Prairie Transition
- Metro / Urban
- Prairie

Activity types:

- Enhance
- Restore

Priority resources addressed by activity:

- Prairie
- Wetlands

Narrative**Abstract**

In this phase of the Enhanced Public Lands - Grassland program, Pheasants Forever (PF) will enhance or restore 8,400 acres of upland and wetland habitat. The goal of this program is to improve habitat on existing Wildlife Management Areas (WMAs), Waterfowl Production Areas (WPAs), and National Wildlife Refuges (NWRs) that are open to public hunting. PF does this by working with agency partners to develop restoration and enhancement plans and hiring local, private contractors to complete work. Examples of habitat improvements include restoring wetlands, removing invasive trees, conducting conservation grazing, and seeding grasslands with high-diversity native seed mixes.

Design and Scope of Work

Grassland-wetland ecosystems require regular disturbance to preserve their functionality and quality to positively impact fish, wildlife, and the public. Lack of disturbance on native and restored prairies has resulted in degraded habitats characterized by low plant diversity, presence of non-native or invasive species, and the spread of voluntary trees into open prairie. Wetlands embedded in these grasslands require restoration to achieve their fullest functionality, or have structures that need repair. The Minnesota Prairie Conservation Plan (MPCP) identifies restoration and enhancement as two strategies to combat these issues. In accordance with this plan, Pheasants Forever has created the Enhanced Public Lands - Grasslands program to restore and enhance grassland and wetland habitats on existing WMAs, WPAs, and NWRs (many of which were purchased in sub-optimal conditions) in the prairie, forest/prairie transition, and metro regions. Pheasants Forever will utilize a previously developed Request for Proposals (RFP) and process to evaluate projects submitted by agency partners.

Restoration and enhancement activities include the following:

- 1) Wetland restoration/enhancement: Tools used to accomplish this include removing drain tile, constructing/repairing earthen dams and/or water control structures, removing sediment and invasive narrow leaf cattail control. Wetlands targeted for enhancement are vital to providing food, cover, and the space required for breeding waterfowl while being essential to and landscape resiliency in the face of climate change.
- 2) Upland Enhancement: We will use a site-specific combination of techniques (e.g. cultivation, tree removal, herbicide, and prescribed fire) to bring back productivity to these public lands. In close collaboration with the land managers, we will seed a diverse mix of native grasses and forbs that are well adapted to site conditions and are ideal for upland nesting bird production and success of pollinator species. Mowing will be used as needed to manage annual weed pressure to ensure establishment.
- 3) Prescribed burning: This is the primary tool for managing grassland habitat as it is cost effective, increases vigor by removing built up litter, and sets back invasive woody species.
- 4) Conservation Grazing: This is an important enhancement tool for sites that are difficult to conduct prescribed fires or need to target specific enhancement needs (e.g. cool season grass suppression, tree invasion, etc.). Permanent infrastructure with a lifespan of 30+ years will be installed to conduct conservation grazing plans written to benefit wildlife.
- 5) Tree Removal: Research has shown that invasive trees are detrimental to prairie/grassland wildlife and thus will be removed with this proposal. These trees reduce nesting success by providing perches for aerial predators, dens for mammalian predators, and increases predator efficiency by creating habitat edges and fragmenting habitat. Predators are highly effective at predating both nests and nesting birds, especially in fragmented low quality habitat.

Restoring or enhancing habitat to its highest function in these areas will not only greatly benefit fish and wildlife populations, but also reduce future management costs (by creating robust, better self-regulating ecosystems), and improve the enjoyment of the area by the public.

Explain how the proposal addresses habitat protection, restoration, and/or enhancement for fish, game & wildlife, including threatened or endangered species conservation

In line with the goals of the MPCP, this program directly addresses the loss of quality habitat on reconstructed and native prairies through restoration and enhancement best practices. By increasing the quality of existing remnant and reconstructed prairie habitat we benefit numerous species that are of special concern, threatened, or endangered. This proposal targets grassland species, including but not limited to, greater prairie chickens, ring-necked pheasants, monarch butterflies, honey bees and Dakota skippers.

What are the elements of this proposal that are critical from a timing perspective?

Without frequent disturbance grasslands naturally degrade over time. This phenomenon is termed grassland succession. As grassland succession progresses, the cost to correct it increases. This program allows PF to consistently enhance public lands at maximum capacity for the benefit of wildlife and the public.

Describe how the proposal expands habitat corridors or complexes and/or addresses habitat fragmentation:

This proposal improves habitat within corridors and complexes which increases their usability by wildlife. For instance, large expanses of low-quality habitat provide little value to wildlife species who are not generalist, effectively reducing the size of the complex. Enhancing and restoring habitat within these complexes increases the usable area for a greater number of species. A characteristic of low-quality habitat is an increase in habitat edges, which is a type of habitat fragmentation. Rows of trees, and drastic changes in vegetative cover (e.g. visible transition from a stand of smooth brome to Kentucky bluegrass) create edges for predators to navigate and increases their efficiency when hunting. By removing trees and restoring grasslands to high-diversity mixes of grasses and forbs, we reduce the amount of habitat fragmentation within the greater complex.

Which top 2 Conservation Plans referenced in MS97A.056, subd. 3a are most applicable to this project?

- Long Range Plan for the Ring-Necked Pheasant in MN
- Minnesota Prairie Conservation Plan

Explain how this proposal will uniquely address habitat resilience to climate change and its anticipated effects on game, fish & wildlife species utilizing the protected or restored/enhanced habitat this proposal targets.

Healthy ecosystems with diverse native plant communities and fully functional hydrologic systems are more resilient to the changing climate. They do a better job of warding off invasive species by filling all available niches, or "free spots," where invasive may create a foothold. Native vegetative communities also provide the best habitat for native wildlife. This is especially important for species with specific habitat requirements or species that are endemic to a particular region. Many of the sites restored or enhanced under this program are home to these sensitive species and help buffer the effect of climate change on wildlife populations. Restored or enhanced wetlands optimize groundwater recharge, nitrogen and carbon cycling, and constantly provide water for local

game, fish, and wildlife species. By restoring, and enhancing targeted tracts we're creating habitats that are both resilient to climate change and require less maintenance due to their self-regulating nature.

Which LSOHC section priorities are addressed in this proposal?

Forest / Prairie Transition

- Protect, enhance, and restore migratory habitat for waterfowl and related species, so as to increase migratory and breeding success

Metro / Urban

- Protect, enhance, and restore remnant native prairie, Big Woods forests, and oak savanna with an emphasis on areas with high biological diversity

Prairie

- Restore or enhance habitat on public lands

Describe how this project/program will produce and demonstrate a significant and permanent conservation legacy and/or outcomes for fish, game, and wildlife, and if not permanent outcomes, why it is important to undertake at this time:

Enhancements and restorations completed under this program significantly increase the quality of habitat for game birds and other wildlife on public lands in the prairie, forest/prairie transition, and metro regions. Many of the properties were purchased in sub-optimal condition with limited funds, preventing restoration efforts that would have resulted in fully functional ecosystems. This program sets these properties on a trajectory to provide high quality habitat for wildlife and improve enjoyment for all public land users.

Outcomes

Programs in forest-prairie transition region:

- Increased waterfowl and upland bird migratory and breeding success ~ *Outcomes will be measured by resource professionals and evaluated by using the best science available to land managers.*

Programs in metropolitan urbanizing region:

- Other ~ *Outcomes will be measured by resource professionals and evaluated by using the best science available to land managers.*

Programs in prairie region:

- Improved condition of habitat on public lands ~ *Outcomes will be measured by resource professionals and evaluated by using the best science available to land managers.*

What other dedicated funds may collaborate with or contribute to this proposal?

- N/A

Per MS 97A.056, Subd. 24, Please explain whether the request is supplanting or is a substitution for any previous funding that was not from a legacy fund and was used for the same purpose.

This proposal supplements past investments and is focused on accelerating the protection and restoration of strategically selected parcels.

How will you sustain and/or maintain this work after the Outdoor Heritage Funds are expended?

The enhancements completed under this phase will generally allow the unit to be managed more effectively by either the USFWS or MNDNR. Limited station/area funds, constant pressure from invasive species (i.e. grasses, forbs, and trees), water quality decline, aging grasslands, climate change and other factors increase the difficulty of maintaining these enhancements; therefore, we expect continued opportunity to supplement local agency efforts. While it's difficult for a third party like PF to provide an analysis of future costs on existing public land, according to the Long-Range Budget Analysis of Land Management Needs, the cost of long-term management ranges from \$11-16/acre annually. We expect the average need to be the same for the parcels enhanced or restored under this program.

Actions to Maintain Project Outcomes

Year	Source of Funds	Step 1	Step 2	Step 3
Post Project Completion - WMA	MN DNR - Game and Fish Funds	Monitoring	Maintenance	-
Post Project Completion - WPA	USFWS - Federal	Monitoring	Maintenance	-
Post Project Completion - NWR	USFWS - Federal	Monitoring	Maintenance	-

Provide an assessment of how your program may celebrate cultural diversity or reach diverse communities in Minnesota, including reaching low- and moderate-income households:

The goal of this program is to enhance and restore wildlife habitat on public lands open to all Minnesotans, regardless of cultural background or fiscal standing. WPAs, WMAs, and NWRs eligible for this program are free and open to access by all. This program spans all of the Prairie, Forest-Prairie, and Metro regions. Some acquisitions will be nearby areas with diverse or low-income communities. This program engages with everyone who wants to participate in public lands and the outdoors.

Activity Details

Requirements

Will restoration and enhancement work follow best management practices including MS 84.973 Pollinator Habitat Program?

Yes

Is the restoration and enhancement activity on permanently protected land per 97A.056, Subd 13(f), tribal lands, and/or public waters per MS 103G.005, Subd. 15 or on lands to be acquired in this program?

Yes

Where does the activity take place?

- WMA
- WPA
- Refuge Lands
- SNA

Land Use

Will there be planting of any crop on OHF land purchased or restored in this program, either by the proposer or the end owner of the property, outside of the initial restoration of the land?

No

Will insecticides or fungicides (including neonicotinoid and fungicide treated seed) be used within any activities of this proposal either in the process of restoration or use as food plots?

No

Other OHF Appropriation Awards

Have you received OHF dollars through LSOHC in the past?

Yes

Are any of these past appropriations still OPEN?

Yes

Approp Year	Funding Amount Received	Amount Spent to Date	Funding Remaining	% Spent to Date
2024	\$1,902,000	-	-	-
2023	\$2,772,000	\$506,048	\$2,265,952	18.26%
2021	\$1,951,000	\$1,734,943	\$216,057	88.93%
2020	\$2,280,000	\$2,280,000	-	100.0%
Totals	\$8,905,000	\$4,520,991	\$4,384,009	50.77%

Timeline

Activity Name	Estimated Completion Date
Distribute project Request for Proposals (RFP) to area land managers	9/1/2025
Review project RFP's with project selection committee	11/30/2025
Select projects for completion and hire contractors to complete habitat work	1/31/2026
Enhancement/restoration work begins	5/31/2026
Re-evaluate project status/budget and solicit additional projects as needed	12/31/2026
Complete all enhancement/restoration work	9/1/2030

Budget**Totals**

Item	Funding Request	Total Leverage	Leverage Source	Total
Personnel	\$175,400	-	-	\$175,400
Contracts	\$5,040,000	\$100,000	PF/State/Federal	\$5,140,000
Fee Acquisition w/ PILT	-	-	-	-
Fee Acquisition w/o PILT	-	-	-	-
Easement Acquisition	-	-	-	-
Easement Stewardship	-	-	-	-
Travel	\$60,000	-	-	\$60,000
Professional Services	-	-	-	-
Direct Support Services	\$152,900	\$87,400	PF	\$240,300
DNR Land Acquisition Costs	-	-	-	-
Capital Equipment	-	-	-	-
Other Equipment/Tools	-	-	-	-
Supplies/Materials	\$840,000	-	-	\$840,000
DNR IDP	\$120,000	-	-	\$120,000
Grand Total	\$6,388,300	\$187,400	-	\$6,575,700

Personnel

Position	Annual FTE	Years Working	Funding Request	Total Leverage	Leverage Source	Total
PF Field Staff	0.38	5.0	\$153,800	-	-	\$153,800
PF Grant Staff	0.05	5.0	\$21,600	-	-	\$21,600

Amount of Request: \$6,388,300**Amount of Leverage:** \$187,400**Leverage as a percent of the Request:** 2.93%**DSS + Personnel:** \$328,300**As a % of the total request:** 5.14%**Easement Stewardship:** -**As a % of the Easement Acquisition:** -

Total Leverage (from above)	Amount Confirmed	% of Total Leverage	Amount Anticipated	% of Total Leverage
\$187,400	-	0.0%	\$187,400	100.0%

Detail leverage sources and confirmation of funds:

Leverage is expected from multiple sources including but not limited to federal sources, land value donations, contractor donations and PF. Not every source is 100% confirmed at this point. However, PF has an exemplary track record of delivery and over-achievement of match commitments that further stretch OHF funding.

Does this proposal have the ability to be scalable?

Yes

If the project received 50% of the requested funding

Describe how the scaling would affect acres/activities and if not proportionately reduced, why?

This proposal's budget at 100% of the request is based on the average acres that are enhanced and restored per appropriation. If this project is reduced by 50% we would scale down all acres/activities and dollars amounts proportionately.

Describe how personnel and DSS expenses would be adjusted and if not proportionately reduced, why?

Personnel and DSS will be scaled down proportionately.

If the project received 30% of the requested funding

Describe how the scaling would affect acres/activities and if not proportionately reduced, why?

If this project is reduced by 70% we would scale down all acres/activities and dollars amounts proportionately.

Describe how personnel and DSS expenses would be adjusted and if not proportionately reduced, why?

Personnel and DSS will be scaled down proportionately.

Personnel

Has funding for these positions been requested in the past?

Yes

Please explain the overlap of past and future staffing and position levels previously received and how that is coordinated over multiple years?

In general PF staffing is existing and only partially funded by OHF and specifically this request. Billing to any appropriation would only be for time spent on direct and necessary costs incurred as outlined in an Accomplishment Plan.

Contracts

What is included in the contracts line?

We anticipate that all of the contract funding will be used for restoration and enhancement activities.

Travel

Does the amount in the travel line include equipment/vehicle rental?

No

Explain the amount in the travel line outside of traditional travel costs of mileage, food, and lodging

NA

I understand and agree that lodging, meals, and mileage must comply with the current MMB Commissioner Plan:

Yes

Direct Support Services

How did you determine which portions of the Direct Support Services of your shared support services is direct to this program?

PF utilizes the Total Modified Direct Cost method. This methodology is annually approved by the U.S. Department of Interior's National Business Center as the basis for the organization's Indirect Cost Rate Agreement. PF's allowable direct support services cost is 3.93%. In this proposal, PF has discounted its rate to 2.5% of the sum of personnel, contracts, professional services, and travel. We are donating the difference-in-kind.

Federal Funds

Do you anticipate federal funds as a match for this program?

Yes

Are the funds confirmed?

No

What is the approximate date you anticipate receiving confirmation of the federal funds?

7/1/2027

Output Tables**Acres by Resource Type (Table 1)**

Type	Wetland	Prairie	Forest	Habitat	Total Acres
Restore	840	-	0	0	840
Protect in Fee with State PILT Liability	0	0	0	0	0
Protect in Fee w/o State PILT Liability	0	0	0	0	0
Protect in Easement	0	0	0	0	0
Enhance	-	7,560	0	0	7,560
Total	840	7,560	0	0	8,400

Total Requested Funding by Resource Type (Table 2)

Type	Wetland	Prairie	Forest	Habitat	Total Funding
Restore	\$638,800	-	-	-	\$638,800
Protect in Fee with State PILT Liability	-	-	-	-	-
Protect in Fee w/o State PILT Liability	-	-	-	-	-
Protect in Easement	-	-	-	-	-
Enhance	-	\$5,749,500	-	-	\$5,749,500
Total	\$638,800	\$5,749,500	-	-	\$6,388,300

Acres within each Ecological Section (Table 3)

Type	Metro/Urban	Forest/Prairie	SE Forest	Prairie	N. Forest	Total Acres
Restore	84	252	0	504	0	840
Protect in Fee with State PILT Liability	0	0	0	0	0	0
Protect in Fee w/o State PILT Liability	0	0	0	0	0	0
Protect in Easement	0	0	0	0	0	0
Enhance	756	2,268	0	4,536	0	7,560
Total	840	2,520	0	5,040	0	8,400

Total Requested Funding within each Ecological Section (Table 4)

Type	Metro/Urban	Forest/Prairie	SE Forest	Prairie	N. Forest	Total Funding
Restore	\$63,900	\$191,700	-	\$383,200	-	\$638,800
Protect in Fee with State PILT Liability	-	-	-	-	-	-
Protect in Fee w/o State PILT Liability	-	-	-	-	-	-
Protect in Easement	-	-	-	-	-	-
Enhance	\$575,000	\$1,724,900	-	\$3,449,600	-	\$5,749,500
Total	\$638,900	\$1,916,600	-	\$3,832,800	-	\$6,388,300

Average Cost per Acre by Resource Type (Table 5)

Type	Wetland	Prairie	Forest	Habitat
Restore	\$760	-	-	-
Protect in Fee with State PILT Liability	-	-	-	-
Protect in Fee w/o State PILT Liability	-	-	-	-
Protect in Easement	-	-	-	-
Enhance	-	\$760	-	-

Average Cost per Acre by Ecological Section (Table 6)

Type	Metro/Urban	Forest/Prairie	SE Forest	Prairie	N. Forest
Restore	\$760	\$760	-	\$760	-
Protect in Fee with State PILT Liability	-	-	-	-	-
Protect in Fee w/o State PILT Liability	-	-	-	-	-
Protect in Easement	-	-	-	-	-
Enhance	\$760	\$760	-	\$760	-

Target Lake/Stream/River Feet or Miles

Parcels

Sign-up Criteria?

No

Explain the process used to identify, prioritize, and select the parcels on your list:

Requests for proposals will be sent to MN public land managers and PF chapters within the prairie, prairie/forest transition, and metro regions. PF evaluates projects based on proximity to and size habitat complex, benefit to T/E and SGCN, and alignment with existing conservation plans. Projects will be accepted until all funds have been spent.

Restore / Enhance Parcels

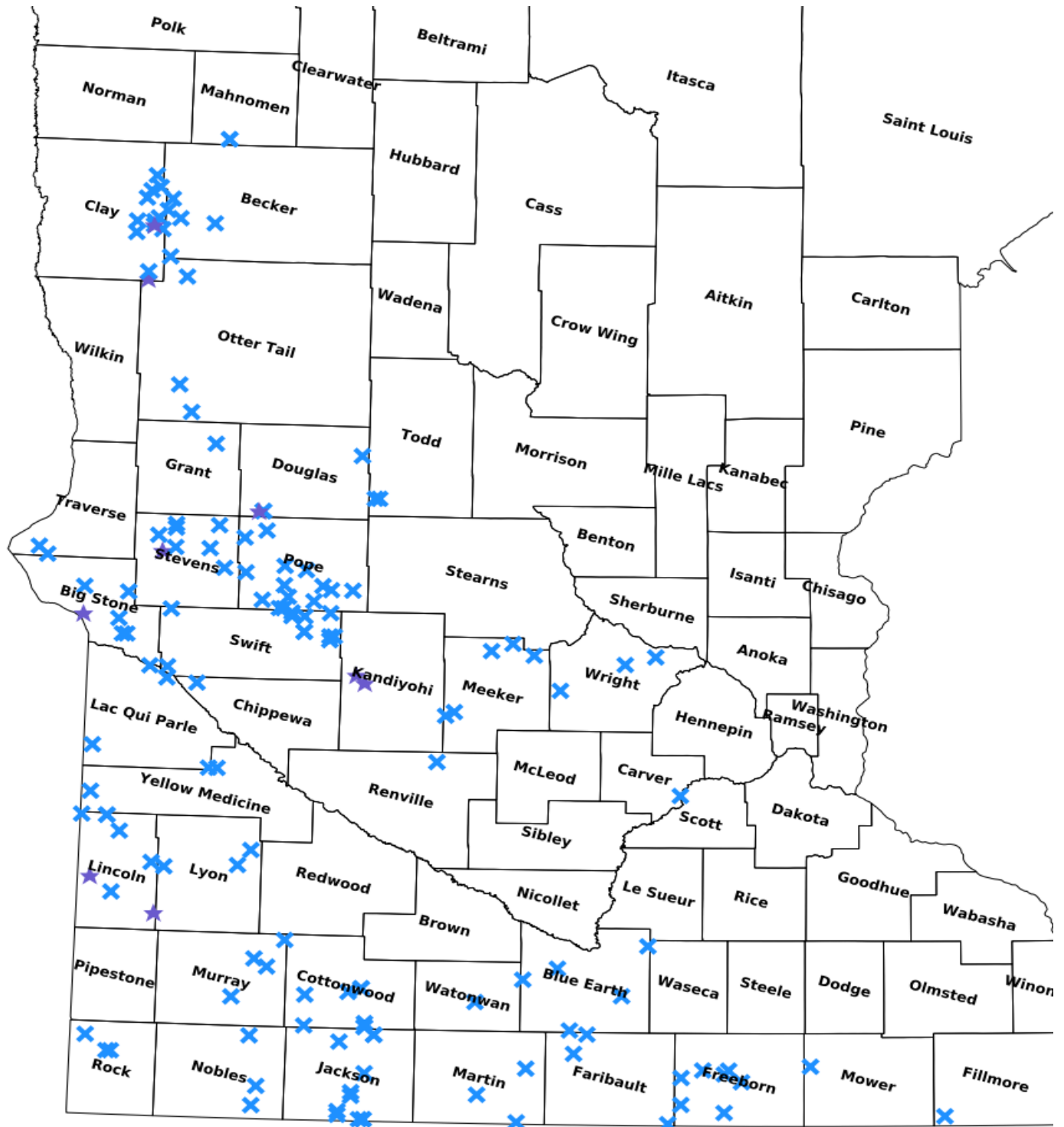
Name	County	TRDS	Acres	Est Cost	Existing Protection	Description
Stinking Lake WPA	Becker	14043231	2	\$18,000	Yes	Tree Removal, ,
Arneson WPA	Becker	13942213	1	\$5,000	Yes	Brush Mowing/Shearing, ,
Marks WPA	Becker	14043217	48	\$75,500	Yes	Tree Removal, ,
Lake Park WPA	Becker	13943210	350	\$134,650	Yes	Conservation Grazing, Tree Removal, ,
Larson WPA	Becker	13843232	3	\$18,500	Yes	Tree Removal, ,
Shelstad WPA	Big Stone	12145211	200	\$247,045	Yes	Fencing, Upland Restoration, Tree Removal
Big Stone WMA	Big Stone	12246218	40	\$32,410	Yes	Wetland, ,
Hillman WPA	Big Stone	12145210	75	\$50,000	Yes	Conservation Grazing, Tree Removal, ,
Kufrin WPA (Central)	Big Stone	12245221	110	\$17,500	Yes	Tree Removal, ,
Karsky WPA	Big Stone	12346207	68	\$17,550	Yes	Tree Removal, ,
Dismal Swamp WPA	Big Stone	12345214	98	\$25,875	Yes	Tree Removal, ,
Howard Farm WPA	Blue Earth	10728209	400	\$12,000	Yes	Tree Removal, ,
Perch Lake WPA	Blue Earth	10626213	80	\$3,600	Yes	Tree Removal, ,
Born WMA	Blue Earth	10825212	47	\$14,500	Yes	Tree Removal, ,
Pauley WPA	Blue Earth	10729230	35	\$33,501	Yes	Wetland, Upland Restoration WITHOUT seed, Tree Removal
Shelby WPA	Blue Earth	10528236	160	\$7,200	Yes	Tree Removal, ,
Rapids Lake North NWR	Carver	11523230	300	\$9,000	Yes	Tree Removal, ,
Lundgren WPA	Chippewa	11942209	221	\$12,300	Yes	Tree Removal, ,
Rushfeldt WPA	Clay	13944222	6	\$79,026	Yes	Wetland Restoration, ,
Carlson WPA	Clay	13945213	31	\$34,108	Yes	Tree Removal, ,
Hoykens WPA	Clay	14044217	269	\$7,720	Yes	Brush Mowing/Shearing, ,
Rushfeldt WPA1	Clay	13944222	30	\$241,295	Yes	Tree Removal, Brush Mowing/Shearing, Conservation Grazing
Coot Landing	Clay	13744221	9	\$62,082	Yes	Prescribed Fire, Conservation Grazing, ,
Doran Lake WPA	Clay	13944225	37	\$108,418	Yes	Tree Removal, ,
Rushfeldt North WPA	Clay	13944215	277	\$173,453	Yes	Conservation Grazing, Tree Removal, Wetland Restoration
Flora Lake WPA	Clay	14044204	48	\$181,114	Yes	Tree Removal, Wetland Restoration, ,
Haugtvedt Scheffler Tract WPA	Clay	13744233	48	\$281,390	Yes	Wetland Restoration, ,
Olson WPA	Clay	13944211	38	\$31,500	Yes	Brush Mowing/Shearing, ,
Rustad Lake WPA	Clay	14144236	411	\$217,622	Yes	Conservation Grazing, Tree Removal, Wetland Restoration

Doran Lake WPA	Clay	13945236	135	\$35,257	Yes	Conservation Grazing, ,
Korell North WPA	Clay	14144214	80	\$365,177	Yes	Conservation Grazing, Tree Removal, Wetland Restoration
Wolf Lake WPA (Gotto Tract)	Cottonwood	10535230	7	\$10,000	Yes	Tree Removal, ,
Wolf Lake WPA1	Cottonwood	10535231	2	\$500	Yes	Tree Removal, ,
Clear Lake WPA	Cottonwood	10538235	11	\$37,875	Yes	Conservation Grazing, ,
Swan Lake WPA	Cottonwood	10636212	149	\$29,175	Yes	Conservation Grazing, ,
Swan Lake WPA	Cottonwood	10636212	149	\$63,325	Yes	Tree Removal, ,
Wolf Lake WPA	Cottonwood	10535231	20	\$1,700	Yes	Tree Removal, ,
Harder Lake WPA	Cottonwood	10636216	66	\$68,400	Yes	Upland Restoration, ,
Long Lake WPA	Cottonwood	10638223	30	\$90,000	Yes	Upland Restoration, ,
Roger Holmes WMA	Douglas	12936211	475	\$224,323	Yes	Conservation Grazing, Prescribed Fire, Diversity Seeding
Thompson WPA	Douglas	12740225	17	\$80,000	Yes	Tree Removal, ,
Hegg Lake WMA	Douglas	12740226	9	\$0	Yes	Wetland Restoration, ,
Sabolik WPA	Douglas	12740225	16	\$60,000	Yes	Tree Removal, ,
Kiester WPA	Faribault	10124235	40	\$52,500	Yes	Upland Restoration, ,
Lura Lake WPA	Faribault	10427203	200	\$37,500	Yes	Tree Removal, Upland Restoration,
Rice Lake WMA	Faribault	10427231	95	\$55,000	Yes	Tree Removal, ,
Beaver Creek WMA	Fillmore	10113221	27	\$19,717	Yes	Diversity Seeding, ,
Mansfield WMA	Freeborn	10123205	76	\$80,000	Yes	Diversity Seeding, ,
Two Island WPA	Freeborn	10322225	75	\$35,000	Yes	Tree Removal, ,
Foster Creek WPA	Freeborn	10323232	48	\$64,160	Yes	Tree Removal, ,
Goose Lake WPA	Freeborn	10221203	75	\$0	Yes	Tree Removal, ,
Goose Creek WPA	Freeborn	10122213	195	\$117,500	Yes	Diversity Seeding, ,
Halls Lake WPA	Freeborn	10322219	32	\$167,435	Yes	Diversity Seeding, ,
Two Island WPA	Freeborn	10321219	59	\$47,878	Yes	Diversity Seeding, ,
Spaulding WPA	Grant	13041231	23	\$18,127	Yes	Tree Removal, ,
Boot Lake WPA	Jackson	10335231	27	\$59,276	Yes	Diversity Seeding, ,
Holy Trinity WPA	Jackson	10236234	2	\$2,000	Yes	Tree Removal, ,
Jerry Schotzko WPA	Jackson	10136236	2	\$2,000	Yes	Tree Removal, ,
Sioux Forks WPA	Jackson	10136219	209	\$60,000	Yes	Tree Removal, ,
Hunter WPA	Jackson	10236227	191	\$0	Yes	Rx Fire, ,
Howard K. Vincent WPA	Jackson	10135231	185	\$102,750	Yes	Upland Restoration, ,
Little Sioux River WPA	Jackson	10136230	182	\$5,460	Yes	Tree Removal, ,
Timber Lake WPA	Jackson	10436219	1	\$1,000	Yes	Tree Removal, ,
Christiania WPA	Jackson	10435209	50	\$65,000	Yes	Tree Removal, ,
Christiania WPA	Jackson	10435209	40	\$52,500	Yes	Tree Removal, ,
Gopher Ridge WMA	Kandiyohi	11936201	13	\$59,991	Yes	Wetland Restoration, ,
Mamre WMA	Kandiyohi	12036227	95	\$1,999	Yes	Wetland Restoration, ,
Taylor WPA	Lac qui Parle	11646204	77	\$6,545	Yes	Tree Removal, ,
Lac Qui Parle WMA- Louisburg	Lac qui Parle	12044222	77	\$47,000	Yes	Tree Removal, ,
Hastad WPA (North-W1/2W1/2)	Lac qui Parle	11943205	230	\$29,900	Yes	Tree Removal, ,
Flinks WMA	Lac qui Parle	11642236	230	\$131,978	Yes	Upland Restoration, Tree Removal,
Hopeful WMA	Lincoln	10944212	50	\$0	Yes	Wetland Restoration, ,
Kontz WPA	Lincoln	11345206	17	\$51,400	Yes	Conservation Grazing, Tree Removal,
MinnKota WMA	Lincoln	11346206	80	\$30,487	Yes	Fencing, ,
Gislason Unit (Northern Tallgrass Prairie NWR)	Lincoln	11144202	111	\$88,200	Yes	Conservation Grazing, Tree Removal,
Collinson WMA	Lincoln	11045217	225	\$20,000	Yes	Tree Removal, Prescribed

						Fire,
Kragh Farms WPA	Lincoln	11146228	202	\$60,000	Yes	Wetland Restoration, ,
Archerville WMA	Lincoln	11345206	184	\$220,800	Yes	Tree Removal, ,
Rook WPA	Lincoln	11345227	162	\$45,000	Yes	Conservation Grazing, Tree Removal,
Clifton & Rolling Hills WMAs	Lyon	11140206	6	\$126,327	Yes	Tree Removal, ,
Yellow Medicine WPA	Lyon	11143208	155	\$47,000	Yes	Conservation Grazing, Tree Removal,
Redwood River WPA	Lyon	11240215	50	\$25,650	Yes	Upland Restoration, Tree Removal,
Squirrel Lake WPA	Mahnomen	14341228	50	\$83,000	Yes	Tree Removal, ,
Squirrel Lake WPA	Mahnomen	14341228	10	\$120,000	Yes	Wetland, Tree Removal,
Swag WMA	Martin	10130236	35	\$24,500	Yes	Tree Removal, ,
Pierce Lake WPA	Martin	10231228	110	\$0	Yes	Rx Fire, ,
Center Creek WMA	Martin	10329220	11	\$27,000	Yes	Tree Removal, ,
Tyrone Flats WPA	Meeker	12131223	40	\$16,000	Yes	Upland Restoration, Tree Removal,
Clear Lake WPA	Meeker	12130210	8	\$80,000	Yes	Tree Removal, ,
Rodewald WMA	Meeker	11832218	77	\$73,563	Yes	Wetland Restoration, Tree Removal,
Rosendale WPA	Meeker	11832209	30	\$50,000	Yes	Upland Restoration, ,
Kingston WMA	Meeker	12129228	230	\$100,000	Yes	Tree Removal, ,
Schamber WPA	Mower	10318217	30	\$85,000	Yes	Tree Removal, ,
Big Slough WPA	Murray	10641225	116	\$40,250	Yes	Conservation Grazing, ,
Dovray WPA	Murray	10739217	4	\$4,000	Yes	Tree Removal, ,
Slaughter Slough WPA	Murray	10740202	167	\$70,975	Yes	Tree Removal, ,
Pell Creek NWR	Murray	10839212	73	\$25,000	Yes	Tree Removal, ,
Lake Bella WMA	Nobles	10440215	31	\$19,200	Yes	Tree Removal, ,
Worthington WPA	Nobles	10240224	18	\$3,175	Yes	Tree Removal, Prescribed Fire,
John Erickson WMA	Nobles	10140214	65	\$103,200	Yes	Tree Removal, ,
Lone Tree WMA	Nobles	10135231	16	\$130,800	Yes	Tree Removal, ,
Peter Lien WPA	Otter Tail	13142219	114	\$61,078	Yes	Tree Removal, Wetland Restoration,
Putnam WPA (Tingelstad tract)	Otter Tail	13743225	115	\$115,300	Yes	Upland Restoration, ,
Townsend WPA (Johnson tact)	Otter Tail	13243215	10	\$50,960	Yes	Tree Removal, Wetland Restoration,
Gust Prairie NTGP (South)	Pope	12640232	42	\$7,725	Yes	Tree Removal, ,
Heidebrink WPA	Pope	12338224	370	\$750	Yes	Tree Removal, ,
Stenerson Lake WPA	Pope	12438210	242	\$9,750	Yes	Tree Removal, ,
Hoffman (NTGP)	Pope	12339235	136	\$6,650	Yes	Tree Removal, ,
Lake Johanna WPA	Pope	12336204	92	\$7,820	Yes	Tree Removal, ,
Nelson Lake WPA	Pope	12337203	77	\$9,900	Yes	Tree Removal, ,
Rustad WPA	Pope	12340224	69	\$35,249	Yes	Conservation Grazing, Tree Removal,
Walden WPA	Pope	12440217	59	\$3,540	Yes	Tree Removal, ,
Berg WPA	Pope	12439235	29	\$10,150	Yes	Tree Removal, ,
Benson Lake WPA	Pope	12339213	28	\$9,800	Yes	Tree Removal, ,
Ouren WPA	Pope	12437232	25	\$3,300	Yes	Tree Removal, ,
McIver WPA	Pope	12639219	23	\$4,935	Yes	Tree Removal, ,
Froland WPA	Pope	12439202	23	\$6,000	Yes	Tree Removal, ,
Cramlet NTGP	Pope	12339234	6	\$1,020	Yes	Tree Removal, ,
Cream City WPA	Renville	11633214	22	\$86,000	Yes	Upland Restoration, Tree Removal,
Touch the Sky Prairie NWR1	Rock	10345207	125	\$126,825	Yes	Upland Restoration, Tree Removal,
Touch the Sky Prairie NWR	Rock	10345208	187	\$42,425	Yes	Conservation Grazing, ,
Bartels NWR	Rock	10446220	58	\$23,312	Yes	Conservation Grazing, ,

Cin WMA	Stevens	12543219	215	\$7,900	Yes	Wetland, ,
Edwards WPA North	Stevens	12441209	35	\$3,300	Yes	Tree Removal, ,
Pomme de Terre River WPA	Stevens	12641217	77	\$29,106	Yes	Tree Removal, ,
Geise WPA	Stevens	12643222	168	\$139,586	Yes	Conservation Grazing, Diversity Seeding, Tree Removal
Pepperton WPA (North) W1/2	Stevens	12543215	79	\$5,750	Yes	Tree Removal, ,
Fish Lake WPA	Stevens	12644236	100	\$33,840	Yes	Diversity Seeding, Tree Removal,
Welfare WPA	Stevens	12542213	55	\$11,000	Yes	Tree Removal, ,
Kill WPA	Stevens	12643215	105	\$500	Yes	Tree Removal, ,
Roderick WPA	Swift	12137203	42	\$9,360	Yes	Tree Removal, ,
Lac Qui Parle WMA- Szabo	Swift	12043220	300	\$60,250	Yes	Tree Removal, ,
Loen WPA (NW)	Swift	12238207	65	\$27,945	Yes	Tree Removal, ,
Big Slough WPA (East)	Swift	12238210	74	\$4,440	Yes	Tree Removal, ,
Fahl WPA	Swift	12238206	103	\$2,400	Yes	Tree Removal, ,
Monson Lake WPA	Swift	12137202	110	\$11,227	Yes	Tree Removal, ,
Big Slough WPA (West)	Swift	12237203	7	\$420	Yes	Tree Removal, ,
Spring Lake WPA	Swift	12243204	115	\$10,925	Yes	Tree Removal, ,
Gilbertson WPA	Swift	12137210	6	\$60,755	Yes	Conservation Grazing, Diversity Seeding, Tree Removal
Welsh WPA	Swift	12238234	140	\$26,499	Yes	Tree Removal, Wetland Restoration,
McCarthy NTGP	Swift	12238234	23	\$42,749	Yes	Diversity Seeding, Wetland Restoration,
Spohn	Todd	12735205	112	\$60,000	Yes	Tree Removal, Disturbance Seed & Seeding, Brush Mowing/Shearing
Quistorff	Todd	12735204	258	\$113,181	Yes	Tree Removal, Disturbance Seed & Seeding,
Robin Hood WPA (Central)	Traverse	12548221	350	\$69,135	Yes	Tree Removal, ,
Diekmann WPA	Traverse	12548235	258	\$51,375	Yes	Tree Removal, ,
Rosendale WMA	Watonswan	10631229	5	\$3,575	Yes	Tree Removal, ,
Angus Lake WPA	Wright	12026201	114	\$300,000	Yes	Upland Restoration, Tree Removal,
Pelican Lake WPA	Wright	12124230	55	\$103,500	Yes	Tree Removal, ,
Temperance WPA	Wright	11928209	58	\$56,250	Yes	Tree Removal, ,
Dakota WPA	Yellow Medicine	11446204	35	\$65,000	Yes	Tree Removal, Conservation Grazing,
Stony Run WMA	Yellow Medicine	11641232	80	\$36,000	Yes	Tree Removal, ,

Parcel Map



0 12 24 36 mi

- Protect in Easement
- ▲ Protect in Fee with PILT
- Protect in Fee W/O PILT
- ★ Restore
- ✕ Enhance
- ✚ Other

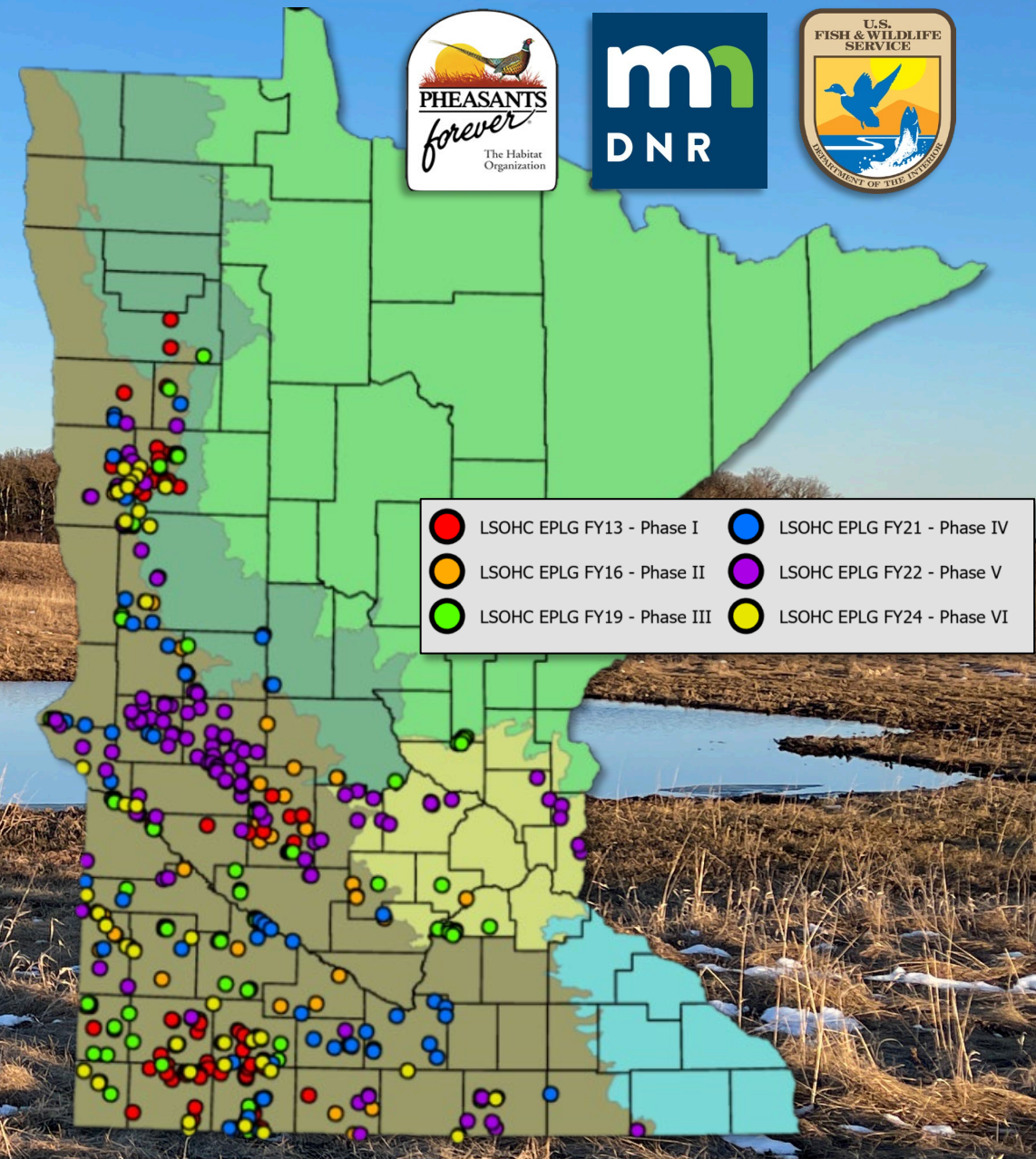
Enhanced Public Lands Grasslands: Phase VIII

Current Request: \$6.3M to Impact 8,400 Acres
Since program inception we have restored or enhanced over 52,000 acres

Program Activities:

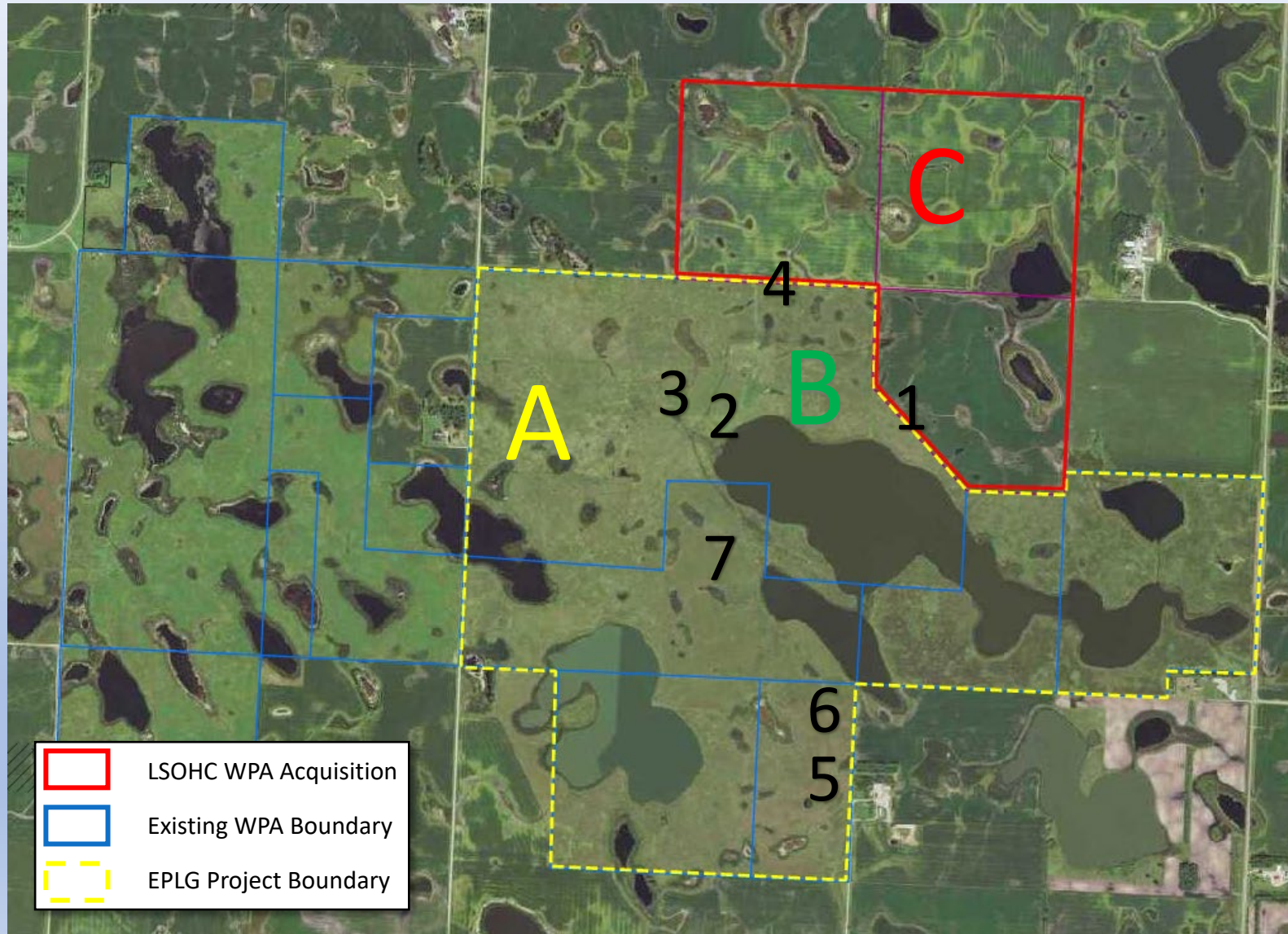
- Tree Removal
- Prescribed Fire
- Wetland Restoration
- Diversity Seeding
- Conservation Grazing

The Enhanced Public Lands Grasslands program partners with the MN Department of Natural Resources and the U.S. Fish & Wildlife Service to enhance public lands for the benefit of grassland dependent species in the prairie, prairie/forest transition, and metro regions.



Map shows all projects on public lands in phases one through five of the Enhanced Public Lands: Grasslands Program.

Building Habitat on Robinhood WPA & Prairie Grouse in Southern MN



- A. 2019- 480-acre Grazing System Installed. LSOHC EPLG ML20
- B. 2021- Tree and Brush Removal Completed. LSOHC EPLG ML21
- C. 2022- 460-acre WPA Acquisition. LSOHC WPA ML22

- 1. 10/25/2023- 2 Sharp-Tailed Grouse
- 2. 11/5/2023- 9 Grouse Species
- 3. 11/6/2023- 9 Grouse Species
- 4. 3/25/2024- 2 Greater Prairie Chickens
- 5. 4/14/2024- 3 Sharp-Tailed Grouse
- 6. 5/4/2024- 1 Sharp- Tailed Grouse
- 7. 5/4/2024- 1 Greater Prairie Chicken