



Lessard-Sams Outdoor Heritage Council

Enhanced Public Land - Grasslands - Phase VII

ML 2024 Request for Funding

General Information

Date: 06/23/2023

Proposal Title: Enhanced Public Land - Grasslands - Phase VII

Funds Requested: \$2,286,800

Confirmed Leverage Funds: -

Is this proposal Scalable?: Yes

Manager Information

Manager's Name: Alexander Nelson

Title: MN Restoration Manager

Organization: Pheasants Forever, Inc.

Address: 1000 150th ave NW

City: Spicer, MN 56288

Email: anelson@pheasantsforever.org

Office Number: 320-292-6678

Mobile Number: 320-292-6678

Fax Number:

Website: www.pheasantsforever.org

Location Information

County Location(s): Jackson, Wright, Washington, Lincoln, Yellow Medicine, Watonwan, Traverse, Swift, Stevens, Renville, Pope, Norman, Murray, Meeker, Martin, Mahnommen, Lac qui Parle, Kandiyohi, Freeborn, Fillmore, Douglas, Cottonwood, Clay, Chippewa, Big Stone, Becker, Anoka, Otter Tail, Lyon, Todd, Blue Earth, Sibley, Rock, Brown, Pipestone, Faribault, Redwood, Mower and Grant.

Eco regions in which work will take place:

- Forest / Prairie Transition
- Metro / Urban
- Prairie

Activity types:

- Enhance
- Restore

Priority resources addressed by activity:

- Prairie
- Wetlands

Narrative**Abstract**

In this phase of the Enhanced Public Lands - Grassland program, Pheasants Forever (PF) will enhance or restore 4,000 acres of upland and wetland habitat. The goal of this program is to improve habitat on existing Wildlife Management Areas (WMAs), Waterfowl Production Areas (WPAs), and National Wildlife Refuges (NWRs) that are open to public hunting. PF does this by working with agency partners to develop restoration and enhancement plans and hiring local, private contractors to complete work. Examples of habitat improvements include restoring wetlands, removing invasive trees, conducting conservation grazing, and seeding grasslands with high-diversity native seed mixes.

Design and Scope of Work

Grassland-wetland ecosystems require regular disturbance to preserve their functionality and quality to positively impact fish, wildlife, and the public. Lack of disturbance on native and restored prairies has resulted in degraded habitats characterized by low plant diversity, presence of non-native or invasive species, and the spread of voluntary trees into open prairie. Wetlands embedded in these grasslands require restoration to achieve their fullest functionality, or have structures that need repair. The Minnesota Prairie Conservation Plan (MPCP) identifies restoration and enhancement as two strategies to combat these issues. In accordance with this plan, Pheasants Forever has created the Enhanced Public Lands - Grasslands program to restore and enhance grassland and wetland habitats on existing WMAs, WPAs, and NWRs (many of which were purchased in sub-optimal conditions) in the prairie, forest/prairie transition, and metro regions. Pheasants Forever will utilize a previously developed Request for Proposals (RFP) and process to evaluate projects submitted by agency partners.

Restoration and enhancement activities include the following:

- 1) Wetland restoration/enhancement: Tools used to accomplish this include removing drain tile, constructing/repairing earthen dams and/or water control structures, removing sediment and invasive narrow leaf cattail control. Wetlands targeted for enhancement are vital to providing food, cover, and the space required for breeding waterfowl while being essential to and landscape resiliency in the face of climate change.
- 2) Upland Enhancement: We will use a site-specific combination of techniques (e.g. cultivation, tree removal, herbicide, and prescribed fire) to bring back productivity to these public lands. In close collaboration with the land managers, we will seed a diverse mix of native grasses and forbs that are well adapted to site conditions and are ideal for upland nesting bird production and success of pollinator species. Mowing will be used as needed to manage annual weed pressure to ensure establishment.
- 3) Prescribed burning: This is the primary tool for managing grassland habitat as it is cost effective, increases vigor by removing built up litter, and sets back invasive woody species.
- 4) Conservation Grazing: This is an important enhancement tool for sites that are difficult to conduct prescribed fires or need to target specific enhancement needs (e.g. cool season grass suppression, tree invasion, etc.). Permanent infrastructure with a lifespan of 30+ years will be installed to conduct conservation grazing plans written to benefit wildlife.
- 5) Tree Removal: Research has shown that invasive trees are detrimental to prairie/grassland wildlife and thus will be removed with this proposal. These trees reduce nesting success by providing perches for aerial predators, dens for mammalian predators, and increases predator efficiency by creating habitat edges and fragmenting habitat. Predators are highly effective at predating both nests and nesting birds, especially in fragmented low quality habitat.

Restoring or enhancing habitat to its highest function in these areas will not only greatly benefit fish and wildlife populations, but also reduce future management costs (by creating robust, better self-regulating ecosystems), and improve the enjoyment of the area by the public.

Explain how the proposal addresses habitat protection, restoration, and/or enhancement for fish, game & wildlife, including threatened or endangered species conservation

In line with the goals of the MPCP, this program directly addresses the loss of quality habitat on reconstructed and native prairies through restoration and enhancement best practices. By increasing the quality of existing remnant and reconstructed prairie habitat we benefit numerous species that are of special concern, threatened, or endangered. This proposal targets grassland species, including but not limited to, greater prairie chickens, ring-necked pheasants, monarch butterflies, honey bees and Dakota skippers.

What are the elements of this proposal that are critical from a timing perspective?

Without frequent disturbance grasslands naturally degrade over time. This phenomenon is termed grassland succession. As grassland succession progresses, the cost to correct it increases. This program allows PF to consistently enhance public lands at maximum capacity for the benefit of wildlife and the public.

Describe how the proposal expands habitat corridors or complexes and/or addresses habitat fragmentation:

This proposal improves habitat within corridors and complexes which increases their usability by wildlife. For instance, large expanses of low-quality habitat provide little value to wildlife species who are not generalist, effectively reducing the size of the complex. Enhancing and restoring habitat within these complexes increases the usable area for a greater number of species. A characteristic of low-quality habitat is an increase in habitat edges, which is a type of habitat fragmentation. Rows of trees, and drastic changes in vegetative cover (e.g. visible transition from a stand of smooth brome to Kentucky bluegrass) create edges for predators to navigate and increases their efficiency when hunting. By removing trees and restoring grasslands to high-diversity mixes of grasses and forbs, we reduce the amount of habitat fragmentation within the greater complex.

Which Conservation Plans referenced in MS97A.056, subd. 3a are most applicable to this project?

- Long Range Plan for the Ring-Necked Pheasant in MN
- Minnesota Prairie Conservation Plan

Explain how this proposal will uniquely address habitat resilience to climate change and its anticipated effects on game, fish & wildlife species utilizing the protected or restored/enhanced habitat this proposal targets.

Healthy ecosystems with diverse native plant communities and fully functional hydrologic systems are more resilient to the changing climate. They do a better job of warding off invasive species by filling all available niches, or "free spots," where invasive may create a foothold. Native vegetative communities also provide the best habitat for native wildlife. This is especially important for species with specific habitat requirements or species that are endemic to a particular region. Many of the sites restored or enhanced under this program are home to these sensitive species and help buffer the effect of climate change on wildlife populations. Restored or enhanced wetlands optimize groundwater recharge, nitrogen and carbon cycling, and constantly provide water for local game, fish, and wildlife species. By restoring, and enhancing targeted tracts we're creating habitats that are both resilient to climate change and require less maintenance due to their self-regulating nature.

Which LSOHC section priorities are addressed in this proposal?

Forest / Prairie Transition

- Protect, enhance, and restore migratory habitat for waterfowl and related species, so as to increase migratory and breeding success

Metro / Urban

- Protect, enhance, and restore remnant native prairie, Big Woods forests, and oak savanna with an emphasis on areas with high biological diversity

Prairie

- Restore or enhance habitat on public lands

Describe how this project/program will produce and demonstrate a significant and permanent conservation legacy and/or outcomes for fish, game, and wildlife, and if not permanent outcomes, why it is important to undertake at this time:

Enhancements and restorations completed under this program significantly increase the quality of habitat for game birds and other wildlife on public lands in the prairie, forest/prairie transition, and metro regions. Many of the properties were purchased in sub-optimal condition with limited funds, preventing restoration efforts that would have resulted in fully functional ecosystems. This program sets these properties on a trajectory to provide high quality habitat for wildlife and improve enjoyment for all public land users.

Outcomes

Programs in forest-prairie transition region:

- Increased waterfowl and upland bird migratory and breeding success ~ *Outcomes will be measured by resource professionals and evaluated by using the best science available to land managers.*

Programs in metropolitan urbanizing region:

- Other ~ *Outcomes will be measured by resource professionals and evaluated by using the best science available to land managers.*

Programs in prairie region:

- Improved condition of habitat on public lands ~ *Outcomes will be measured by resource professionals and evaluated by using the best science available to land managers.*

What other dedicated funds may collaborate with or contribute to this proposal?

- N/A

Per MS 97A.056, Subd. 24, Please explain whether the request is supplanting or is a substitution for any previous funding that was not from a legacy fund and was used for the same purpose.

This proposal supplements past investments and is focused on accelerating the protection and restoration of strategically selected parcels.

How will you sustain and/or maintain this work after the Outdoor Heritage Funds are expended?

The enhancements completed under this phase will generally allow the unit to be managed more effectively by either the USFWS or MNDNR. Limited station/area funds, constant pressure from invasive species (i.e. grasses, forbs, and trees), water quality decline, aging grasslands, climate change and other factors increase the difficulty of maintaining these enhancements; therefore, we expect continued opportunity to supplement local agency efforts. While it's difficult for a third party like PF to provide an analysis of future costs on existing public land, according to the Long-Range Budget Analysis of Land Management Needs, the cost of long-term management ranges from \$11-16/acre annually. We expect the average need to be the same for the parcels enhanced or restored under this program.

Actions to Maintain Project Outcomes

| Year | Source of Funds | Step 1 | Step 2 | Step 3 |
|-------------------------------|------------------------------|------------|------------|--------|
| Post Project Completion - WMA | MN DNR - Game and Fish Funds | Monitoring | Maintience | - |
| Post Project Completion - WPA | USFWS - Federal | Monitoring | Maintience | - |
| Post Project Completion - NWR | USFWS - Federal | Monitoring | Maintience | - |

Provide an assessment of how your program may celebrate cultural diversity or reach diverse communities in Minnesota, including reaching low- and moderate-income households:

The goal of this program is to enhance and restore wildlife habitat on public lands open to all Minnesotans, regardless of cultural background or fiscal standing. WPAs, WMAs, and NRWs eligible for this program are free and open to access by all. This program spans all of the Prairie, Forest-Prairie, and Metro regions. Some acquisitions will be nearby areas with diverse or low-income communities. This program engages with everyone who wants to participate in public lands and the outdoors.

Activity Details

Requirements

If funded, this proposal will meet all applicable criteria set forth in MS 97A.056?

Yes

Will restoration and enhancement work follow best management practices including MS 84.973 Pollinator Habitat Program?

Yes

Is the restoration and enhancement activity on permanently protected land per 97A.056, Subd 13(f), tribal lands, and/or public waters per MS 103G.005, Subd. 15 or on lands to be acquired in this program?

Yes

Where does the activity take place?

- WMA
- WPA
- Refuge Lands

Land Use

Will there be planting of any crop on OHF land purchased or restored in this program?

No

Will neonicotinoid pesticide products be used within any activities of this proposal?

No

Other OHF Appropriation Awards

Have you received OHF dollars in the past through LSOHC that are current OPEN appropriations?

Yes

| Approp Year | Funding Amount Received | Amount Spent to Date | Funding Remaining | % Spent to Date |
|-------------|-------------------------|----------------------|-------------------|-----------------|
| 2023 | \$2,772,000 | - | - | - |
| 2021 | \$1,951,000 | \$576,769 | \$1,374,231 | 29.56% |
| 2020 | \$2,280,000 | \$1,803,556 | \$476,444 | 79.1% |
| 2018 | \$2,160,000 | \$2,099,548 | \$60,452 | 97.2% |
| Totals | \$9,163,000 | \$4,479,873 | \$4,683,127 | 48.89% |

Timeline

| Activity Name | Estimated Completion Date |
|--|---------------------------|
| Distribute project Request for Proposals (RFP) to area land managers | 9/1/2024 |
| Review project RFP's with project selection committee | 11/30/2024 |
| Select projects for completion and hire contractors to complete habitat work | 1/31/2025 |
| Enhancement/restoration work begins | 5/31/2025 |
| Re-evaluate project status/budget and solicit additional projects as needed | 12/31/2025 |
| Complete all enhancement/restoration work | 9/1/2029 |

Budget

Totals

| Item | Funding Request | Total Leverage | Leverage Source | Total |
|----------------------------|--------------------|------------------|------------------|--------------------|
| Personnel | \$113,000 | - | - | \$113,000 |
| Contracts | \$1,600,000 | \$100,000 | PF/State/Federal | \$1,700,000 |
| Fee Acquisition w/ PILT | - | - | - | - |
| Fee Acquisition w/o PILT | - | - | - | - |
| Easement Acquisition | - | - | - | - |
| Easement Stewardship | - | - | - | - |
| Travel | \$40,000 | - | - | \$40,000 |
| Professional Services | - | - | - | - |
| Direct Support Services | \$53,800 | \$33,200 | PF | \$87,000 |
| DNR Land Acquisition Costs | - | - | - | - |
| Capital Equipment | - | - | - | - |
| Other Equipment/Tools | - | - | - | - |
| Supplies/Materials | \$400,000 | - | - | \$400,000 |
| DNR IDP | \$80,000 | - | - | \$80,000 |
| Grand Total | \$2,286,800 | \$133,200 | - | \$2,420,000 |

Personnel

| Position | Annual FTE | Years Working | Funding Request | Total Leverage | Leverage Source | Total |
|----------------|------------|---------------|-----------------|----------------|-----------------|----------|
| PF Grant Staff | 0.1 | 5.0 | \$40,900 | - | - | \$40,900 |
| PF Field Staff | 0.19 | 5.0 | \$72,100 | - | - | \$72,100 |

Amount of Request: \$2,286,800

Amount of Leverage: \$133,200

Leverage as a percent of the Request: 5.82%

DSS + Personnel: \$166,800

As a % of the total request: 7.29%

Easement Stewardship: -

As a % of the Easement Acquisition: -

| Total Leverage (from above) | Amount Confirmed | % of Total Leverage | Amount Anticipated | % of Total Leverage |
|-----------------------------|------------------|---------------------|--------------------|---------------------|
| \$133,200 | - | 0.0% | \$133,200 | 100.0% |

Detail leverage sources and confirmation of funds:

Leverage is expected from multiple sources including but not limited to federal sources, land value donations, contractor donations and PF. Not every source is 100% confirmed at this point. However, PF has an exemplary track record of delivery and over-achievement of match commitments that further stretch OHF funding.

Does this proposal have the ability to be scalable?

Yes

If the project received 50% of the requested funding

Describe how the scaling would affect acres/activities and if not proportionately reduced, why?

This proposal's budget at 100% of the request is based on the average acres that are enhanced and restored per appropriation. If this project is reduced by 50% we would scale down all acres/activities and dollars amounts proportionately.

Describe how personnel and DSS expenses would be adjusted and if not proportionately reduced, why?

Personnel and DSS will be scaled down proportionately.

If the project received 30% of the requested funding

Describe how the scaling would affect acres/activities and if not proportionately reduced, why?

If this project is reduced by 70% we would scale down all acres/activities and dollars amounts proportionately.

Describe how personnel and DSS expenses would be adjusted and if not proportionately reduced, why?

Personnel and DSS will be scaled down proportionately.

Personnel

Has funding for these positions been requested in the past?

Yes

Please explain the overlap of past and future staffing and position levels previously received and how that is coordinated over multiple years?

In general PF staffing is existing and only partially funded by OHF and specifically this request. Billing to any appropriation would only be for time spent on direct and necessary costs incurred as outlined in an Accomplishment Plan.

Contracts

What is included in the contracts line?

We anticipate that all of the contract funding will be used for restoration and enhancement activities.

Travel

Does the amount in the travel line include equipment/vehicle rental?

No

Explain the amount in the travel line outside of traditional travel costs of mileage, food, and lodging

NA

I understand and agree that lodging, meals, and mileage must comply with the current MMB Commissioner Plan:

Yes

Direct Support Services

How did you determine which portions of the Direct Support Services of your shared support services is direct to this program?

PF utilizes the Total Modified Direct Cost method. This methodology is annually approved by the U.S. Department of Interior's National Business Center as the basis for the organization's Indirect Cost Rate Agreement. PF's allowable direct support services cost is 4.04%. In this proposal, PF has discounted its rate to 2.5% of the sum of personnel, contracts, professional services, and travel. We are donating the difference-in-kind.

Federal Funds

Do you anticipate federal funds as a match for this program?

Yes

Are the funds confirmed?

No

What is the approximate date you anticipate receiving confirmation of the federal funds?

7/1/2026

Output Tables

Acres by Resource Type (Table 1)

| Type | Wetland | Prairie | Forest | Habitat | Total Acres |
|--|------------|--------------|----------|----------|--------------|
| Restore | 400 | - | 0 | 0 | 400 |
| Protect in Fee with State PILT Liability | 0 | 0 | 0 | 0 | 0 |
| Protect in Fee w/o State PILT Liability | 0 | 0 | 0 | 0 | 0 |
| Protect in Easement | 0 | 0 | 0 | 0 | 0 |
| Enhance | - | 3,600 | 0 | 0 | 3,600 |
| Total | 400 | 3,600 | 0 | 0 | 4,000 |

Total Requested Funding by Resource Type (Table 2)

| Type | Wetland | Prairie | Forest | Habitat | Total Funding |
|--|------------------|--------------------|----------|----------|--------------------|
| Restore | \$228,700 | - | - | - | \$228,700 |
| Protect in Fee with State PILT Liability | - | - | - | - | - |
| Protect in Fee w/o State PILT Liability | - | - | - | - | - |
| Protect in Easement | - | - | - | - | - |
| Enhance | - | \$2,058,100 | - | - | \$2,058,100 |
| Total | \$228,700 | \$2,058,100 | - | - | \$2,286,800 |

Acres within each Ecological Section (Table 3)

| Type | Metro/Urban | Forest/Prairie | SE Forest | Prairie | N. Forest | Total Acres |
|--|-------------|----------------|-----------|--------------|-----------|--------------|
| Restore | 40 | 120 | 0 | 240 | 0 | 400 |
| Protect in Fee with State PILT Liability | 0 | 0 | 0 | 0 | 0 | 0 |
| Protect in Fee w/o State PILT Liability | 0 | 0 | 0 | 0 | 0 | 0 |
| Protect in Easement | 0 | 0 | 0 | 0 | 0 | 0 |
| Enhance | 360 | 1,080 | 0 | 2,160 | 0 | 3,600 |
| Total | 400 | 1,200 | 0 | 2,400 | 0 | 4,000 |

Total Requested Funding within each Ecological Section (Table 4)

| Type | Metro/Urban | Forest/Prairie | SE Forest | Prairie | N. Forest | Total Funding |
|--|------------------|------------------|-----------|--------------------|-----------|--------------------|
| Restore | \$22,900 | \$68,600 | - | \$137,200 | - | \$228,700 |
| Protect in Fee with State PILT Liability | - | - | - | - | - | - |
| Protect in Fee w/o State PILT Liability | - | - | - | - | - | - |
| Protect in Easement | - | - | - | - | - | - |
| Enhance | \$205,800 | \$617,400 | - | \$1,234,900 | - | \$2,058,100 |
| Total | \$228,700 | \$686,000 | - | \$1,372,100 | - | \$2,286,800 |

Average Cost per Acre by Resource Type (Table 5)

| Type | Wetland | Prairie | Forest | Habitat |
|--|---------|---------|--------|---------|
| Restore | \$571 | - | - | - |
| Protect in Fee with State PILT Liability | - | - | - | - |
| Protect in Fee w/o State PILT Liability | - | - | - | - |
| Protect in Easement | - | - | - | - |
| Enhance | - | \$571 | - | - |

Average Cost per Acre by Ecological Section (Table 6)

| Type | Metro/Urban | Forest/Prairie | SE Forest | Prairie | N. Forest |
|--|-------------|----------------|-----------|---------|-----------|
| Restore | \$572 | \$571 | - | \$571 | - |
| Protect in Fee with State PILT Liability | - | - | - | - | - |

| | | | | | |
|--|-------|-------|---|-------|---|
| Protect in Fee w/o State PILT Liability | - | - | - | - | - |
| Protect in Easement | - | - | - | - | - |
| Enhance | \$571 | \$571 | - | \$571 | - |

Target Lake/Stream/River Feet or Miles

Parcels

Sign-up Criteria?

No

Explain the process used to identify, prioritize, and select the parcels on your list:

Requests for proposals will be sent to MN public land managers and PF chapters within the prairie, prairie/forest transition, and metro regions. PF will evaluate projects based on proximity to and size habitat complex, benefit to T/E and SGCN, and alignment with existing conservation plans. Projects will be accepted until all funds have been spent.

Restore / Enhance Parcels

| Name | County | TRDS | Acres | Est Cost | Existing Protection |
|---------------------------|------------|----------|-------|-----------|---------------------|
| Gordie Mikkelson WMA | Anoka | 03322205 | 35 | \$7,000 | Yes |
| Lamprey Pass WMA | Anoka | 03222213 | 34 | \$6,800 | Yes |
| Gordie Mikkelson WMA | Anoka | 03322205 | 35 | \$39,200 | Yes |
| Lake Park | Becker | 13943210 | 40 | \$50,000 | Yes |
| Lake Park | Becker | 13943210 | 428 | \$84,650 | Yes |
| Kufrin WPA (Central) | Big Stone | 12245221 | 175 | \$17,500 | Yes |
| Karsky WPA | Big Stone | 12346207 | 195 | \$17,550 | Yes |
| Dismal Swamp WPA | Big Stone | 12345214 | 225 | \$25,875 | Yes |
| Shelstad WPA | Big Stone | 12145211 | 200 | \$80,000 | Yes |
| Pauley WPA | Blue Earth | 10729230 | 156 | \$40,000 | Yes |
| O.A Vee Memorial WMA | Blue Earth | 10828225 | 65 | \$6,500 | Yes |
| Lembke WMA | Blue Earth | 10629234 | 42 | \$5,188 | Yes |
| Born WMA | Blue Earth | 10825212 | 40 | \$4,000 | Yes |
| Evans Slough WMA | Blue Earth | 10629227 | 160 | \$16,000 | Yes |
| Perch Lake WPA | Blue Earth | 10626213 | 176 | \$35,000 | Yes |
| Pick WMA | Blue Earth | 10525209 | 202 | \$65,553 | Yes |
| Gilfillan Lake WMA | Blue Earth | 10925232 | 37 | \$3,650 | Yes |
| Wood Lake WMA | Brown | 10833229 | 114 | \$28,500 | Yes |
| Lundgren WPA | Chippewa | 11942209 | 205 | \$12,300 | Yes |
| Cuka WMA | Chippewa | 11937234 | 8 | \$36,424 | Yes |
| Three Jetvig Lakes WPA | Clay | 13944233 | 132 | \$28,000 | Yes |
| Christiansen WPA | Clay | 13844209 | 236 | \$41,000 | Yes |
| Nelson WPA | Clay | 13945224 | 239 | \$30,000 | Yes |
| Noreen WPA | Clay | 13944219 | 492 | \$84,000 | Yes |
| Flora Lake | Clay | 14044204 | 35 | \$100,000 | Yes |
| Doran Lake | Clay | 13945225 | 150 | \$50,000 | Yes |
| Coot Landing | Clay | 13744221 | 40 | \$85,000 | Yes |
| Carlson | Clay | 13945213 | 30 | \$75,000 | Yes |
| Rustad Lake | Clay | 14144236 | 16 | \$45,000 | Yes |
| Rushfeldt North | Clay | 13944215 | 30 | \$100,000 | Yes |
| Rushfeldt North | Clay | 13944215 | 6 | \$10,000 | Yes |
| Korell North | Clay | 14144214 | 24 | \$90,000 | Yes |
| Rustad Lake | Clay | 14144236 | 100 | \$150,000 | Yes |
| Korell North | Clay | 14144214 | 30 | \$100,000 | Yes |
| Haugtvedt Scheffler Tract | Clay | 13744233 | 48 | \$45,000 | Yes |
| Flora Lake | Clay | 14044204 | 8 | \$25,000 | Yes |
| Downer Prairie | Clay | 13846208 | 9 | \$7,500 | Yes |
| Rustad Lake | Clay | 14144236 | 411 | \$125,995 | Yes |
| Melby WPA | Clay | 14145226 | 88 | \$120,000 | Yes |
| Rushfeldt North | Clay | 13944215 | 277 | \$71,127 | Yes |
| Korell North | Clay | 14144214 | 723 | \$130,239 | Yes |

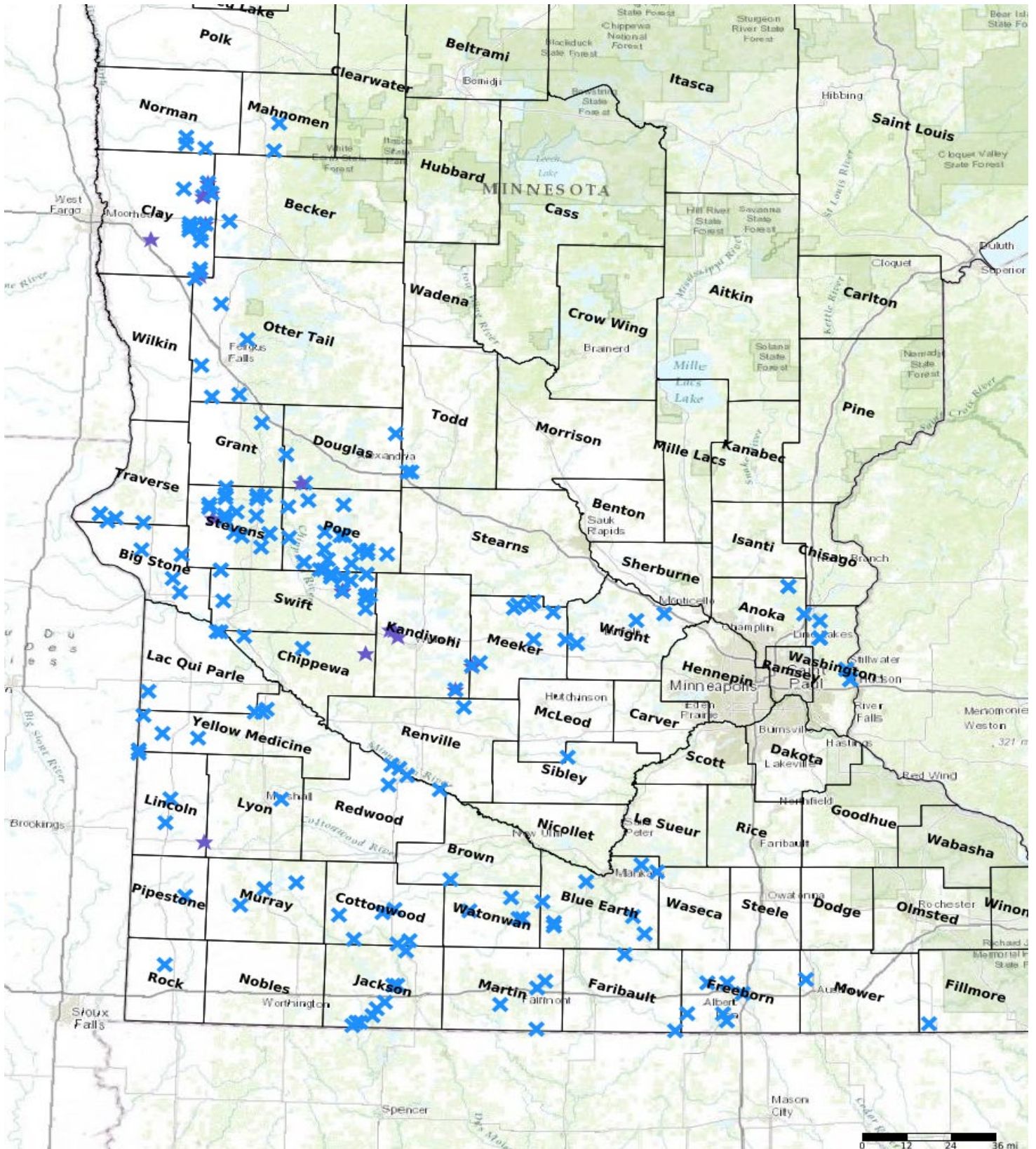
| | | | | | |
|-------------------------------|---------------|----------|-----|-----------|-----|
| Haugtvedt North Phase 2 | Clay | 13744228 | 184 | \$68,954 | Yes |
| Harder Lake WPA | Cottonwood | 10636216 | 100 | \$30,000 | Yes |
| Wolf Lake WPA | Cottonwood | 10535231 | 2 | \$2,000 | Yes |
| Banks WMA | Cottonwood | 10535227 | 47 | \$2,350 | Yes |
| Long Lake WPA | Cottonwood | 10638222 | 66 | \$28,116 | Yes |
| Pat's Pasture WMA | Cottonwood | 10537229 | 68 | \$3,400 | Yes |
| Swan Lake WPA | Cottonwood | 10636212 | 149 | \$74,500 | Yes |
| Hegg Lake | Douglas | 12740226 | 23 | \$88,696 | Yes |
| Thompson WPA | Douglas | 11940225 | 17 | \$80,000 | Yes |
| Sabolik | Douglas | 12740225 | 16 | \$60,000 | Yes |
| Roger Holmes WMA | Douglas | 12936211 | 475 | \$14,250 | Yes |
| Ellingson WPA | Douglas | 12840218 | 181 | \$20,000 | Yes |
| Kiester WPA | Faribault | 10124235 | 75 | \$22,500 | Yes |
| Maple River ? Goats | Faribault | 10426210 | 42 | \$23,100 | Yes |
| Beaver Creek WMA | Fillmore | 10113221 | 27 | \$27,000 | Yes |
| Twin Lake WPA | Freeborn | 10122202 | 0 | \$0 | Yes |
| Halls Lake WPA | Freeborn | 10322219 | 221 | \$170,000 | Yes |
| Mansfield WMA | Freeborn | 10123205 | 0 | \$0 | Yes |
| Two Island WPA | Freeborn | 10322224 | 59 | \$45,000 | Yes |
| Goose Creek WPA | Freeborn | 10122213 | 0 | \$0 | Yes |
| Goose Lake WPA | Freeborn | 10221203 | 2 | \$2,000 | Yes |
| Spaulding WPA | Grant | 13041231 | 23 | \$20,000 | Yes |
| Pletz Slough/Little Sioux WMA | Jackson | 10136205 | 98 | \$24,500 | Yes |
| Hunter WPA | Jackson | 10236227 | 195 | \$3,000 | Yes |
| Sioux Forks WPA | Jackson | 10136218 | 95 | \$23,750 | Yes |
| Boot Lake WPA | Jackson | 10335231 | 116 | \$49,416 | Yes |
| Toe WMA | Jackson | 10336236 | 25 | \$8,750 | Yes |
| Sioux Valley WMA | Jackson | 10137228 | 218 | \$10,900 | Yes |
| Minnesota WPA | Jackson | 10137232 | 75 | \$22,500 | Yes |
| Skunk Lake WMA | Jackson | 10137227 | 48 | \$2,400 | Yes |
| Christiania WPA | Jackson | 10435209 | 130 | \$85,000 | Yes |
| Gopher Ridge WMA | Kandiyohi | 11936201 | 13 | \$29,992 | Yes |
| RIM Memorial | Kandiyohi | 12036226 | 0 | \$5,750 | Yes |
| Dalton Johnsn | Kandiyohi | 11733221 | 21 | \$19,503 | Yes |
| Dalton Johnsn | Kandiyohi | 11733221 | 41 | \$67,155 | Yes |
| Mamre | Kandiyohi | 12036227 | 0 | \$2,000 | Yes |
| Hegland WPA | Lac qui Parle | 11943204 | 268 | \$16,080 | Yes |
| Flinks WMA | Lac qui Parle | 11642236 | 0 | \$0 | Yes |
| Hastad WPA (North-W1/2W1/2) | Lac qui Parle | 11943205 | 230 | \$29,900 | Yes |
| Taylor WPA | Lac qui Parle | 11646204 | 77 | \$6,545 | Yes |
| MinnKota WMA | Lincoln | 11346206 | 136 | \$30,488 | Yes |
| Hopeful WMA | Lincoln | 10944212 | 6 | \$25,000 | Yes |
| Chain-O-Sloughs WMA | Lincoln | 11145209 | 31 | \$9,300 | Yes |
| Collinson WMA | Lincoln | 11045217 | 50 | \$20,000 | Yes |
| Archerville WMA | Lincoln | 11445206 | 184 | \$220,800 | Yes |
| Clifton & Rolling Hills WMAs | Lyon | 11140206 | 376 | \$75,200 | Yes |
| Squirrel Lake | Mahnomen | 14341228 | 50 | \$50,000 | Yes |
| Sandy Lake WPA | Mahnomen | 14441215 | 106 | \$50,000 | Yes |
| Swag WMA | Martin | 10130236 | 35 | \$30,000 | Yes |
| Pierce Lake WPA | Martin | 10231228 | 110 | \$3,000 | Yes |
| Center Creek WMA | Martin | 10329220 | 36 | \$30,600 | Yes |
| Gruven WMA | Martin | 10330236 | 100 | \$65,000 | Yes |
| Knapp WMA | Meeker | 11929201 | 50 | \$0 | Yes |
| Rodewald | Meeker | 11832218 | 3 | \$15,000 | Yes |
| Tyrone Flats WPA | Meeker | 12131223 | 40 | \$16,000 | Yes |
| Rosendale WPA | Meeker | 12131213 | 30 | \$0 | Yes |
| Tyrone Flats WPA | Meeker | 12130216 | 35 | \$0 | Yes |

| | | | | | |
|-------------------------------|------------|----------|-----|-----------|-----|
| Clear Lake WPA | Meeker | 12130210 | 80 | \$80,000 | Yes |
| Kingston WMA | Meeker | 12129228 | 0 | \$0 | Yes |
| Peifer School WPA | Meeker | 11930203 | 0 | \$0 | Yes |
| Rosendale WPA | Meeker | 11832209 | 30 | \$27,000 | Yes |
| Rodewald | Meeker | 11832218 | 77 | \$37,800 | Yes |
| Schamber WPA | Mower | 10318217 | 30 | \$25,500 | Yes |
| Peters WMA | Murray | 10642209 | 80 | \$20,000 | Yes |
| Slaughter Slough | Murray | 10740202 | 167 | \$83,500 | Yes |
| Mason WPA | Murray | 10741216 | 80 | \$40,500 | Yes |
| Dalby WMA | Norman | 14345211 | 60 | \$7,500 | Yes |
| Syre WMA | Norman | 14344227 | 146 | \$25,550 | Yes |
| Neal WMA | Norman | 14345223 | 191 | \$23,875 | Yes |
| Backstrom WPA | Otter Tail | 13543208 | 520 | \$200,000 | Yes |
| Dahler Slough | Otter Tail | 13144225 | 6 | \$10,000 | Yes |
| Duenow WPA | Otter Tail | 13442233 | 6 | \$29,000 | Yes |
| Peter Lien WPA | Otter Tail | 13142219 | 17 | \$35,000 | Yes |
| Ridgeway WPA (Swenson tract) | Otter Tail | 13244209 | 31 | \$17,000 | Yes |
| Julsrud WPA | Otter Tail | 13644206 | 111 | \$58,900 | Yes |
| Terrace WMA | Pipestone | 10744231 | 100 | \$30,000 | Yes |
| Hoffman (NTGP) | Pope | 12339235 | 70 | \$6,650 | Yes |
| Lake Johanna | Pope | 12336204 | 92 | \$7,820 | Yes |
| McIver (NE) | Pope | 12639219 | 47 | \$4,935 | Yes |
| Nelson Lake (W1/2) | Pope | 12337203 | 110 | \$9,900 | Yes |
| Ouren | Pope | 12437232 | 55 | \$3,300 | Yes |
| Rustad WPA | Pope | 12340224 | 65 | \$9,750 | Yes |
| Stenerson Lake (Fettig SE1/4) | Pope | 12438210 | 130 | \$9,750 | Yes |
| Stenerson Lake (Fettig SW1/4) | Pope | 12438209 | 112 | \$14,000 | Yes |
| Walden (East Arm) | Pope | 12440217 | 59 | \$3,540 | Yes |
| Rustad WPA | Pope | 12340224 | 69 | \$25,500 | Yes |
| Ann Lake | Pope | 12638227 | 11 | \$2,750 | Yes |
| Benson Lake (E) | Pope | 12339213 | 28 | \$9,800 | Yes |
| Berg | Pope | 12439235 | 29 | \$10,150 | Yes |
| Cramlet NTGP | Pope | 12339234 | 12 | \$1,020 | Yes |
| Froland (NE) | Pope | 12439202 | 40 | \$6,000 | Yes |
| Heidebrink (NW) | Pope | 12338224 | 10 | \$750 | Yes |
| Gust Prairie NTGP (South) | Pope | 12640232 | 103 | \$7,725 | Yes |
| Cedar Rock WMA | Redwood | 11236210 | 47 | \$35,250 | Yes |
| Tiger Lake WMA | Redwood | 11335228 | 38 | \$19,000 | Yes |
| Cedar Mountain WMA | Redwood | 11234214 | 27 | \$13,500 | Yes |
| Cold Springs | Renville | 11336211 | 30 | \$15,000 | Yes |
| Granite Prairie WMA | Renville | 11335218 | 28 | \$21,000 | Yes |
| Cream City WPA | Renville | 11633214 | 215 | \$86,000 | Yes |
| Touch the Sky Prairie | Rock | 10345208 | 165 | \$33,000 | Yes |
| High Island WPA | Sibley | 11428230 | 168 | \$134,400 | Yes |
| Wente WPA | Stevens | 12642224 | 79 | \$11,850 | Yes |
| Fitzgerald WPA | Stevens | 12441231 | 13 | \$845 | Yes |
| Cin | Stevens | 12543219 | 11 | \$2,614 | Yes |
| Schultz WPA | Stevens | 12443212 | 221 | \$33,150 | Yes |
| Fish Lake WPA | Stevens | 12544201 | 114 | \$31,920 | Yes |
| Pepperton WPA (North) W1/2 | Stevens | 12543215 | 230 | \$5,750 | Yes |
| Kill WPA | Stevens | 12643215 | 5 | \$500 | Yes |
| Giese WPA | Stevens | 12643222 | 271 | \$59,059 | Yes |
| Struck WPA | Stevens | 12642213 | 110 | \$11,000 | Yes |
| Giese WPA | Stevens | 12143222 | 4 | \$2,340 | Yes |
| Welfare WPA | Stevens | 12542213 | 55 | \$11,000 | Yes |
| Miller WPA | Stevens | 12542207 | 86 | \$15,050 | Yes |
| Edwards WPA (East) | Stevens | 12441209 | 135 | \$17,550 | Yes |

| | | | | | |
|----------------------------|--------------------|----------|-----|-----------|-----|
| Edwards WPA (North) | Stevens | 12441209 | 22 | \$3,300 | Yes |
| Pomme de Terre River WPA | Stevens | 12641217 | 77 | \$29,106 | Yes |
| Giese WPA | Stevens | 12543222 | 273 | \$78,187 | Yes |
| Mud Creek | Stevens | 12442217 | 269 | \$39,750 | Yes |
| Niemackl Slough WPA | Stevens | 12643203 | 119 | \$6,545 | Yes |
| Fish Lake WPA | Stevens | 12644236 | 3 | \$1,920 | Yes |
| Fahl WPA | Swift | 12238206 | 30 | \$2,400 | Yes |
| Gilbertson WPA | Swift | 12137210 | 101 | \$18,262 | Yes |
| Gilbertson WPA | Swift | 12137210 | 7 | \$4,140 | Yes |
| McCarthy NTGP | Swift | 12238234 | 45 | \$27,000 | Yes |
| Bengtson WPA | Swift | 12137227 | 130 | \$44,850 | Yes |
| Big Slough WPA (East) | Swift | 12238210 | 74 | \$4,440 | Yes |
| Big Slough WPA (East) | Swift | 12238210 | 74 | \$4,440 | Yes |
| Big Slough WPA (West) | Swift | 12237203 | 7 | \$420 | Yes |
| Big Slough WPA (West) | Swift | 12237203 | 7 | \$420 | Yes |
| Overby WPA | Swift | 12437234 | 153 | \$76,500 | Yes |
| Fahl WPA | Swift | 12238206 | 30 | \$2,400 | Yes |
| Gilbertson WPA | Swift | 12137210 | 98 | \$49,000 | Yes |
| Loen WPA (Central) | Swift | 12238213 | 117 | \$11,115 | Yes |
| Loen WPA (NE) | Swift | 12238207 | 42 | \$5,880 | Yes |
| Loen WPA (NW) | Swift | 12238207 | 146 | \$10,950 | Yes |
| Monson Lake WPA | Swift | 12137202 | 50 | \$11,228 | Yes |
| Roderick WPA | Swift | 12137203 | 42 | \$9,360 | Yes |
| Spring Lake WPA | Swift | 12243204 | 115 | \$10,925 | Yes |
| Spring Lake WPA | Swift | 12243204 | 115 | \$10,925 | Yes |
| Welsh WPA | Swift | 12238234 | 140 | \$14,000 | Yes |
| McCarthy NTGP | Swift | 12238234 | 9 | \$7,750 | Yes |
| Welsh WPA | Swift | 12238234 | 73 | \$12,500 | Yes |
| Quistorff | Todd | 12735204 | 300 | \$52,500 | Yes |
| Spohn | Todd | 12735205 | 140 | \$24,500 | Yes |
| Geyer WPA | Traverse | 12546232 | 258 | \$38,700 | Yes |
| Robin Hood WPA (Central) | Traverse | 12548221 | 350 | \$19,250 | Yes |
| Lawrence | Traverse | 12547230 | 282 | \$47,000 | Yes |
| Robin Hood WPA (North) | Traverse | 12548221 | 283 | \$36,790 | Yes |
| Diekmann WPA | Traverse | 12548235 | 206 | \$51,375 | Yes |
| Robin Hood WPA (East) | Traverse | 12548221 | 97 | \$13,095 | Yes |
| Bayport WMA | Washington | 02920204 | 54 | \$7,020 | Yes |
| Bayport WMA | Washington | 02920204 | 13 | \$5,070 | Yes |
| Bayport WMA | Washington | 02920222 | 37 | \$7,400 | Yes |
| Hardwood Creek WMA | Washington | 03221227 | 21 | \$3,360 | Yes |
| Paul Hugo Farms WMA | Washington | 03121222 | 1 | \$2,000 | Yes |
| Paul Hugo Farms WMA | Washington | 03121222 | 18 | \$7,020 | Yes |
| Paul Hugo Farms WMA | Washington | 03121222 | 18 | \$20,160 | Yes |
| Bayport WMA | Washington | 02920222 | 30 | \$6,000 | Yes |
| WR Taylor Memorial WMA | Watonwan | 10630219 | 70 | \$3,500 | Yes |
| Younger Brothers WMA | Watonwan | 10731223 | 161 | \$56,350 | Yes |
| Lewisville WMA | Watonwan | 10630220 | 32 | \$1,600 | Yes |
| Curry WMA | Watonwan | 10632207 | 11 | \$4,950 | Yes |
| Pelican Lake WPA | Wright | 12124230 | 105 | \$103,500 | Yes |
| Angus Lake WPA | Wright | 12026201 | 114 | \$114,000 | Yes |
| Temperance WPA | Wright | 11928209 | 58 | \$56,250 | Yes |
| Tatley WMA | Yellow Medicine | 11446231 | 321 | \$20,865 | Yes |
| Middle Antelope Valley WMA | Yellow Medicine | 11444210 | 370 | \$30,340 | Yes |
| Mound Springs WMA | Yellow Medicine | 11546208 | 185 | \$22,200 | Yes |

| | | | | | |
|---------------|--------------------|----------|----|----------|-----|
| Stony Run WMA | Yellow Medicine | 11641232 | 80 | \$36,000 | Yes |
| Siyo Waste | Yellow Medicine | 11641228 | 3 | \$2,500 | Yes |

Parcel Map



- Protect in Easement
- ▲ Protect in Fee with PILT
- Protect in Fee W/O PILT
- ★ Restore
- ✕ Enhance
- ⊕ Other

Enhanced Public Lands Grasslands: Phase VII



Current Request: 2.2M to Impact 4,000 Acres

Since program inception we have restored or enhanced over 49,000 acres

Prior EPL Project Locations

- LSOHC EPL Phase I – FY13/ML12
- LSOHC EPL Phase II – FY16/ML15
- LSOHC EPL Phase III – FY 19/ML18
- LSOHC EPL Phase IV – FY 21/ML20
- LSOHC EPL Phase V – FY 22/ML21

LSOHC Planning Regions

- Forest/Prairie Transition
- Metropolitan Urbanizing Area
- Northern Forest
- Prairie
- Southeast Forest

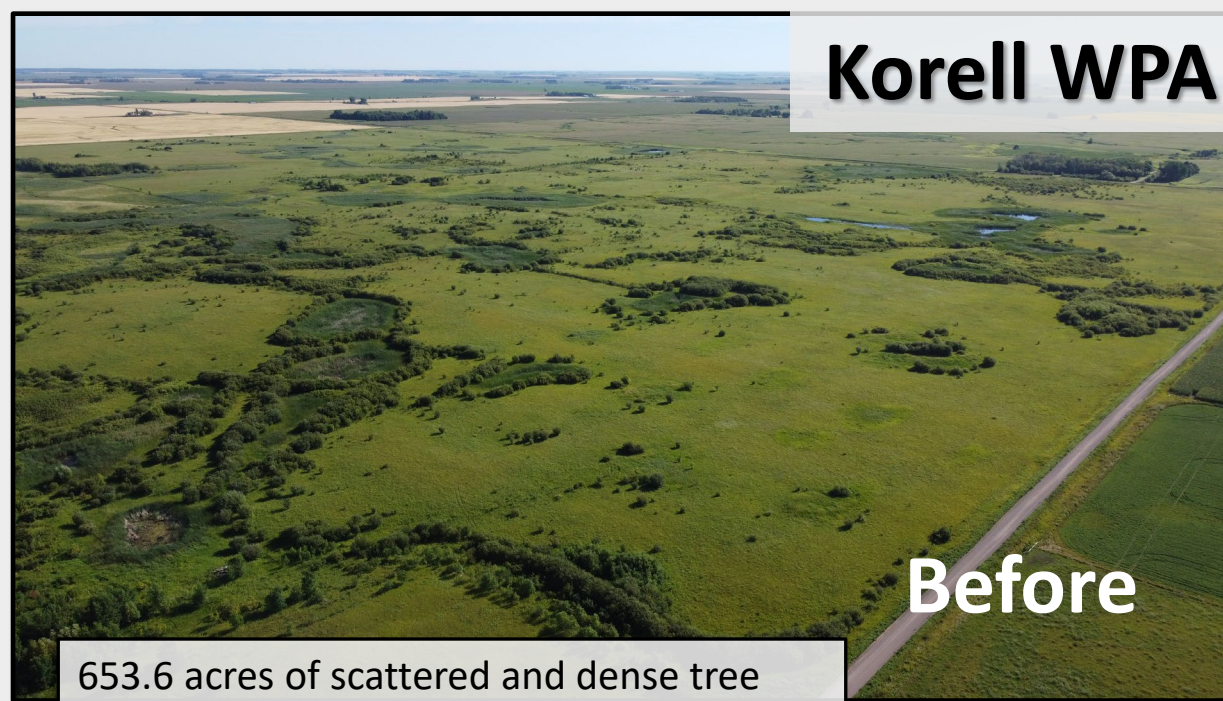
Program Activities:

- Tree Removal
- Prescribed Fire
- Wetland Restoration
- Diversity Seeding
- Conservation Grazing

Map shows all projects on public lands in phases one through five of the Enhanced Public Lands: Grasslands Program.

The Enhanced Public Lands Grasslands program partners with the MN Department of Natural Resources and the U.S. Fish & Wildlife Service to enhance public lands for the benefit of grassland dependent species in the prairie, prairie/forest transition, and metro regions.

Korell WPA Restoration



Before



After

653.6 acres of scattered and dense tree removal were completed in fall 2022. After the trees were removed, we were able to ground truth the wetlands for design. While doing so, we jumped ~30 prairie chickens that were hanging out in areas where trees were removed.



Restoration of forty-six wetlands (19.9 acres) are contracted to be completed in 2023. This wetland work will be funded using small NAWCA and OHF bringing leverage back to the program. Finally, fence will be installed is for the entire 723 acres and is contracted to be completed in 2023.

