



## Lessard-Sams Outdoor Heritage Council

Anoka Sand Plain Habitat Conservation - Phase 9

ML 2024 Request for Funding

---

### General Information

**Date:** 06/15/2023

**Proposal Title:** Anoka Sand Plain Habitat Conservation - Phase 9

**Funds Requested:** \$2,138,000

**Confirmed Leverage Funds:** \$34,000

**Is this proposal Scalable?:** Yes

### Manager Information

**Manager's Name:** Wiley Buck

**Title:** Senior Program Manager

**Organization:** Great River Greening

**Address:** 251 Starkey Street Ste 2200

**City:** Saint Paul, MN 55107

**Email:** wbuck@greatrivergreening.org

**Office Number:** 651-272-3981

**Mobile Number:** 651-318-8667

**Fax Number:**

**Website:** greatrivergreening.org

### Location Information

**County Location(s):** Sherburne and Stearns.

**Eco regions in which work will take place:**

- Forest / Prairie Transition
- Metro / Urban

**Activity types:**

- Enhance

**Priority resources addressed by activity:**

- Prairie
- Forest
- Wetlands

## Narrative

### **Abstract**

The Anoka Sand Plain (ASP) Partnership will restore/enhance 407 acres of prairie and forest habitat within the ASP ecoregion. Our actions will increase biodiversity, habitat connectivity, recreational opportunities, and landscape resilience, which align with the ASP Partnership's strategic plan, DNR Wildlife Action Plan and LSOHC Section priorities.

Great River Greening seeks funding for Quarry Park Phase 2, to enhance another 335ac of the 683ac parcel; 93ac are underway in Phase1 ML19\_ASP6. Sherburne County Parks seeks funding for Big Elk Lake Phase2, to complete the enhancement that will start with ML23\_ASP8, and begin Island View County Park.

### **Design and Scope of Work**

The Anoka Sand Plain project areas include portions of the Metropolitan Urbanizing, Forest/Prairie Transition, and Northern Forest sections. The landscape is a marvelously complex mosaic of habitats, home to quality prairie and savanna, wetlands, fire-dependent forests and woodlands, designated wild and scenic rivers, and a high concentration of rare species. The amount of high quality remnant habitat in the ASP is remarkable given its proximity to Twin Cities and St. Cloud urban areas. While the location of the ASP provides easy access for the majority of Minnesotans, the associated stressors- invasive species, development pressure, and conversion- threaten its sustainability.

The diversity in this rich and important habitat mosaic, complemented by its close proximity to most Minnesotans, is reflected in the number and diversity of organizations that identify the area as a priority, combining our specific knowledge and stakeholder engagement to join forces for its conservation. The robust ASP Partnership is committed to protecting, restoring and enhancing this spectacular region so it can continue to provide vital habitat, invaluable ecological services, and high-quality recreational and engagement opportunities. Bringing clarity and focus to our Phase 9 and all of our work in this complex area is the ASP Partnership's 10-year strategic plan, which aligns with other important plans to identify priority habitats, opportunities, centers of biodiversity, and a plan of action with measurable goals.

With this funding, Great River Greening (GRG) and Sherburne County Parks (SCP), will complete restoration and enhancement (R/E) on 407 protected acres and 800' of shoreline. Habitats include prairie/savanna grasslands, oak woodland, and shoreline.

Results will be achieved by restoration and enhancement of ecologically significant habitats by conducting invasive species and woody encroachment removal, prescribed burning, thinning, seeding, and planting. This includes the continuation of a phase 1 project work at Quarry Park & Reserve (SNA), and Big Elk Lake County Park, as well as the first phase at Island View County Park. Our program will create and improve critical habitat by increasing biodiversity and landscape resilience. It will also benefit water quality and quantity, improve community resiliency, and increase recreational opportunities including R/E engagement.

### **Explain how the proposal addresses habitat protection, restoration, and/or enhancement for fish, game & wildlife, including threatened or endangered species conservation**

The Anoka Sand Plain serves as a refuge for many globally unique species and rare plant communities, including roughly one-third of Minnesota's listed rare plant and animals, 97 known or predicted Species of Greatest Conservation Need (SGCN), and 131 federally or state endangered, threatened, and special concern species. The

Minnesota Biological Survey (MBS) ranks 72,000 acres in the ASP as Outstanding or High Biodiversity. This proposal addresses LSOHC priorities by protecting and restoring/enhancing oak savanna, prairie, riparian, woodlands, and non-forested wetlands, including MBS-ranked acres.

Quarry Park is home to many listed and uncommon species and habitats, including tubercled rein-orchid, red-shouldered hawk, red-headed woodpecker and northern long-eared bat, as well as granite rock outcrops supporting a disjunct population of dry prairie specialists such as brittle prickly pear cactus.

Big Elk Lake includes a site of moderate biodiversity significance in the wetlands along the shore of Big Elk Lake. The site includes occurrences of rare species and areas that have a strong potential for recovery under appropriate management. With 50 acres of open-grown bur oaks, the landscape holds the promise of extremely high quality oak savanna habitat with the proposed management and a restored prescribed fire regime. Cultural surveys to date, with Tribal Partners have revealed many native plants used traditionally as medicines.

### **What are the elements of this proposal that are critical from a timing perspective?**

The amount of high quality remnant habitat in the ASP is remarkable given its proximity to Twin Cities Metropolitan and St. Cloud areas. While the location of the ASP provides easy access for the majority of Minnesotans, the associated stressors threaten the ASP’s sustainability. The ecological diversity of the ASP is threatened by invasive species and development pressure. State-wide growth through 2045 is projected at 7% while projected growth in Anoka and Sherburne counties is 14% and 24% respectively. Land protection will protect remaining remnant habitats, buffer high quality habitat cores and increase habitat corridors and landscape resiliency. Restoration and enhancement efforts will prevent habitat degradation and increase biodiversity.

### **Describe how the proposal expands habitat corridors or complexes and/or addresses habitat fragmentation:**

The ASP Partnership 10 - Year Strategic Conservation Action Plan utilizes multiple-criteria GIS analyses to identify and prioritize critical areas for habitat connectivity, SGCN, biodiversity, and native plant communities. Data layers include: 1. Top 95% of SGCN population composite 2. Good or excellent populations of state or federally endangered and threatened species 3. Richness hotspots falling outside the top 95 percent of populations 4. Marxan outputs from the Scientific and Natural Area strategic plan 5. Sites of Biodiversity Significance that intersect with Marxan outputs 6. Native plant communities: Minnesota Department of Natural Resources – Division of Ecological and Water Resources – Biological Survey. MNDNR Native Plant Communities. 2014.

The sites and actions included in this proposal will combat the threats of habitat fragmentation, degradation and invasive species. These were identified in Minnesota’s Wildlife Action Plan and LSOHC: 25-year framework as the priority actions needed to address significant challenges facing SGCN and landscape resilience in the ASP region. A total of 350 acres of R/E are on MBS areas identified as areas of Medium, High or Outstanding Biodiversity significance.

### **Which Conservation Plans referenced in MS97A.056, subd. 3a are most applicable to this project?**

- Minnesota's Wildlife Action Plan 2015-2025
- Outdoor Heritage Fund: A 25 Year Framework

**Explain how this proposal will uniquely address habitat resilience to climate change and its anticipated effects on game, fish & wildlife species utilizing the protected or restored/enhanced habitat this proposal targets.**

GRG is pursuing the acquisition of a mobile biochar unit to process biomass onsite that is removed during restoration and enhancement. GRG is also in the process of conducting landowner and service provider education on the implementation of biochar in natural resources management. Biochar has the potential to offer a climate-friendly alternative to pile burning; protect habitat by reducing burn scars; has the potential to be a soil amendment in highly degraded sites; and will be monitored to see if it can accelerate and improve the enhancement process by balancing nutrients and/or absorbing allelopathic chemicals known to be emitted by non-native invasive species. The mobile biochar unit requested is scaled for mechanical thinning and shrub removal projects. The total capital request needed is distributed over three GRG ML24 proposals.

**Which LSOHC section priorities are addressed in this proposal?**

**Forest / Prairie Transition**

- Protect, enhance, and restore rare native remnant prairie

**Describe how this project/program will produce and demonstrate a significant and permanent conservation legacy and/or outcomes for fish, game, and wildlife, and if not permanent outcomes, why it is important to undertake at this time:**

The Anoka Sand Plain partnership has worked to protect and restore key areas to ensure that, along with growth, this region continues to be a resilient, functioning landscape that can provide high-quality habitat for fish, game and other wildlife. With past funds, our partnership has protected 794 acres and restored/enhanced 12,421 acres in this unique ecological region, and has buffered high quality habitat cores and expanded habitat corridors. With this funding we will continue to increase the number of acres of enhanced, restored, and protected key habitats to reduce habitat fragmentation, degradation and invasive species which threaten SGCN, landscape resilience, and outdoor recreation opportunities.

**Outcomes**

**Programs in forest-prairie transition region:**

- Remnant native prairies are part of large complexes of restored prairies, grasslands, and large and small wetlands ~ *Perform ecological monitoring using DNR protocol and evaluate data; adapt management when and where needed. Record number of acres protected of high quality habitat on private lands, which buffer public lands and expand habitat cores and corridors; and number of acres of key habitat successfully restored / enhanced. Map project sites and periodically perform GIS analysis to help quantify impact on habitat complexes.*

**What other dedicated funds may collaborate with or contribute to this proposal?**

- N/A

**Per MS 97A.056, Subd. 24, Please explain whether the request is supplanting or is a substitution for any previous funding that was not from a legacy fund and was used for the same purpose.**

This proposal to LSOHC for Outdoor Heritage Fund support does not supplant any other sources of funds. In all cases, this proposal and the projects to be completed accelerate regional habitat work in the Anoka Sand Plain.

**How will you sustain and/or maintain this work after the Outdoor Heritage Funds are expended?**

The ASP Partnership is committed to working with respective land management agencies and owners, and conservation organizations in an on-going basis to identify and procure financial resources for maintaining these improvements as needed.

Land protected through MLT conservation easements will be sustained through state-of-the-art standards and practices for conservation easement stewardship that includes annual property monitoring, effective records management, addressing inquiries and interpretations, tracking changes in ownership, investigating potential violations and defending the easement in case of a true violation. Funding for these easement stewardship activities is included in the project budget.

For R/E on existing protected land, site specific resource management plans will be developed/adopted to guide effective long-term management. All land managers benefitting from R/E and rare plant rescue sites must commit to the long-term maintenance of these sites. A principle management goal for each site is to elevate before grant close, to a threshold where on-going management costs are diminished. For the sites and programs that use volunteers, community volunteer engagement promotes an increase in community stakeholders.

**Actions to Maintain Project Outcomes**

Year	Source of Funds	Step 1	Step 2	Step 3
2030	GRG in-kind	Monitoring every 2-3 years	Landowner Engagement	Follow up treatment, seeding and/or planting
2030	Sherburne County	Prescribed burn	Mechanical Cutting as needed	Prescribed burn

**Provide an assessment of how your program may celebrate cultural diversity or reach diverse communities in Minnesota, including reaching low- and moderate-income households:**

Sherburne County Parks is partnering with Mille Lacs Band of Ojibwe, Upper Sioux Community, and Lower Sioux Indian Community at Big Elk Lake, a sacred Native American site, elevating site reverence through restoration of native vegetation and planning.

ASP Partners have existing DEIJ initiatives including: Future Stewards Program (GRG); partnership with All Nations Program at Minneapolis South High School (GRG); Ambassador Lands Program (MLT); and partnership with the Fond du Lac Band of Ojibwe (MLT). Partners have secured DEIJ related funding including: No Child Left Inside (GRG); internal staff funding for DEIJ pursuits (MLT); and ML22 Trust Fund/legislature-recommended Engaging a Diverse Public in Environmental Stewardship (GRG). Partners will continue to connect all our DEIJ programs and resources to ASP9 during the grant period when appropriate opportunities arise.

ASP ecoregion provides close-to-home recreation opportunities for the majority of Minnesotans, including urban core and rural populations. The MPCA environmental justice tool illustrates that ASP9 program boundary encompasses large BIPOC and low-income population areas. However, barriers exist in some communities to access these opportunities. As such, the ASP Partnership has been developing ways to reduce these barriers.

ASP encompasses a priority DWSMA, attributable to groundwater recharge through sandy soils and the miles of Mississippi River upstream of Twin Cities intakes. Through the land-water connection of our projects, we will contribute to water quality, quantity, and security for all, including urban core and rural populations.

We welcome more conversations with the LSOHC and conservation community about how these values can be better manifested in all our shared work.

### Activity Details

#### Requirements

**If funded, this proposal will meet all applicable criteria set forth in MS 97A.056?**

Yes

**Will restoration and enhancement work follow best management practices including MS 84.973 Pollinator Habitat Program?**

Yes

**Is the restoration and enhancement activity on permanently protected land per 97A.056, Subd 13(f), tribal lands, and/or public waters per MS 103G.005, Subd. 15 or on lands to be acquired in this program?**

Yes

**Where does the activity take place?**

- County/Municipal
- SNA
- Public Waters

#### Land Use

**Will there be planting of any crop on OHF land purchased or restored in this program?**

Yes

**Explain what will be planted:**

Restoration:

Short-term use of agricultural crops is an accepted best practice for preparing a site for prairie restoration, in order to reduce weed seedbeds prior to prairie planting. In some cases this necessitates the use of GMO treated products to facilitate herbicide use in order to control weeds present in the seedbank.

**Will neonicotinoid pesticide products be used within any activities of this proposal?**

No

#### Other OHF Appropriation Awards

**Have you received OHF dollars in the past through LSOHC that are current OPEN appropriations?**

Yes

Approp Year	Funding Amount Received	Amount Spent to Date	Funding Remaining	% Spent to Date
2023	\$3,181,000	-	-	-
2021	\$2,651,000	\$383,700	\$2,267,300	14.47%
2019	\$2,573,000	\$1,910,400	\$662,600	74.25%
2017	\$1,130,000	\$1,128,900	\$1,100	99.9%
2016	\$1,208,000	\$1,204,600	\$3,400	99.72%
2014	\$1,190,000	\$1,047,100	\$142,900	87.99%
2012	\$1,050,000	\$989,400	\$60,600	94.23%
2010	\$747,000	\$747,000	-	100.0%
Totals	\$13,730,000	\$7,411,100	\$6,318,900	53.98%

Timeline

Activity Name	Estimated Completion Date
GRG: Site prep, initial brushing, seeding, initial wave of buckthorn control	11/30/2025
GRG: Project planning, secure landowner agreements	12/31/2024
SCP - R & E Project Planning, Prairie site prep, no-till drilling of native seed	8/31/2024
SCP - R & E mechanical site prep in degraded oak savanna, floodplain forest	2/28/2025
SCP - Prescribed burn site prep for shoreline restoration, prescribed burn through degraded oak savanna	12/31/2026
SCP - Assessment of native seed bank germination and planning for seed and plant installation in oak savanna, dry oak forest, and shoreline	12/31/2027
SCP - prescribed burn (2nd to control invasive cool-season grasses) in shore and native plant installation	12/31/2027
SCP - Native seed and plant installation per results of native seed bank germination in shoreline, dry oak forest, floodplain and oak savanna. Prescribed burn in 1/2 of restored prairie	12/31/2028
SCP - Prescribed burn in 2nd half of restored prairie	12/31/2029

Budget

**Grand Totals Across All Partnerships**

<b>Item</b>	<b>Funding Request</b>	<b>Total Leverage</b>	<b>Leverage Source</b>	<b>Total</b>
Personnel	\$70,000	\$17,000	Sherburne County, Stearns Co. Parks - pending annual budget review	\$87,000
Contracts	\$1,992,000	-	-	\$1,992,000
Fee Acquisition w/ PILT	-	-	-	-
Fee Acquisition w/o PILT	-	-	-	-
Easement Acquisition	-	-	-	-
Easement Stewardship	-	-	-	-
Travel	\$10,000	-	-	\$10,000
Professional Services	\$10,000	-	-	\$10,000
Direct Support Services	\$20,000	\$27,000	-, Unrealized DSS	\$47,000
DNR Land Acquisition Costs	-	-	-	-
Capital Equipment	\$25,000	\$25,000	-, Private Foundation	\$50,000
Other Equipment/Tools	\$5,000	-	-	\$5,000
Supplies/Materials	\$6,000	-	-	\$6,000
DNR IDP	-	-	-	-
<b>Grand Total</b>	<b>\$2,138,000</b>	<b>\$69,000</b>	-	<b>\$2,207,000</b>



**Partner: Great River Greening**

**Totals**

Item	Funding Request	Total Leverage	Leverage Source	Total
Personnel	\$70,000	\$10,000	Stearns Co. Parks - pending annual budget review	\$80,000
Contracts	\$1,700,000	-	-	\$1,700,000
Fee Acquisition w/ PILT	-	-	-	-
Fee Acquisition w/o PILT	-	-	-	-
Easement Acquisition	-	-	-	-
Easement Stewardship	-	-	-	-
Travel	\$10,000	-	-	\$10,000
Professional Services	-	-	-	-
Direct Support Services	\$20,000	\$27,000	Unrealized DSS	\$47,000
DNR Land Acquisition Costs	-	-	-	-
Capital Equipment	\$25,000	\$25,000	Private Foundation	\$50,000
Other Equipment/Tools	\$5,000	-	-	\$5,000
Supplies/Materials	\$6,000	-	-	\$6,000
DNR IDP	-	-	-	-
<b>Grand Total</b>	<b>\$1,836,000</b>	<b>\$62,000</b>	-	<b>\$1,898,000</b>

**Personnel**

Position	Annual FTE	Years Working	Funding Request	Total Leverage	Leverage Source	Total
GRG Staff, Multiple positions	0.18	5.0	\$70,000	\$10,000	Stearns Co. Parks - pending annual budget review	\$80,000

**Capital Equipment**

Item	Funding Request	Total Leverage	Leverage Source	Total
Mobile Biochar Burner	\$25,000	\$25,000	Private Foundation	\$50,000

**Partner: Sherburne County Parks**

**Totals**

Item	Funding Request	Total Leverage	Leverage Source	Total
Personnel	-	\$7,000	Sherburne County	\$7,000
Contracts	\$292,000	-	-	\$292,000
Fee Acquisition w/ PILT	-	-	-	-
Fee Acquisition w/o PILT	-	-	-	-
Easement Acquisition	-	-	-	-
Easement Stewardship	-	-	-	-
Travel	-	-	-	-
Professional Services	\$10,000	-	-	\$10,000
Direct Support Services	-	-	-	-
DNR Land Acquisition Costs	-	-	-	-
Capital Equipment	-	-	-	-
Other Equipment/Tools	-	-	-	-
Supplies/Materials	-	-	-	-
DNR IDP	-	-	-	-
<b>Grand Total</b>	<b>\$302,000</b>	<b>\$7,000</b>	-	<b>\$309,000</b>

**Personnel**

Position	Annual FTE	Years Working	Funding Request	Total Leverage	Leverage Source	Total
Sherb Co Parks Personnel	0.0	0.0	-	\$7,000	Sherburne County	\$7,000

**Amount of Request:** \$2,138,000

**Amount of Leverage:** \$69,000

**Leverage as a percent of the Request:** 3.23%

**DSS + Personnel:** \$90,000

**As a % of the total request:** 4.21%

**Easement Stewardship:** -

**As a % of the Easement Acquisition:** -

Total Leverage (from above)	Amount Confirmed	% of Total Leverage	Amount Anticipated	% of Total Leverage
\$69,000	\$34,000	49.28%	\$35,000	50.72%

**Detail leverage sources and confirmation of funds:**

Stearns County Parks, will put \$10K for annual draft budget. GRG had identified foundations for capital equipment and is actively pursuing.

**Does this proposal have the ability to be scalable?**

Yes

**If the project received 50% of the requested funding**

**Describe how the scaling would affect acres/activities and if not proportionately reduced, why?**

GRG acres would drop from 335 to 152 (45%). Some loss of economy of scale on project management

including RFP and contract management. Mobile biochar unit is not scaleable.

SCP would drop Island View parcel. Big Elk Lake is not scaleable.

**Describe how personnel and DSS expenses would be adjusted and if not proportionately reduced, why?**

For projects that are scaled down or split into phases, there is loss of economy of scale in labor and contracts. DSS expenses are highly proportional to labor and contracts.

**If the project received 30% of the requested funding**

**Describe how the scaling would affect acres/activities and if not proportionately reduced, why?**

GRG - Quarry Park acres would reduce to 78. SCP would retain Big Elk Lake.

**Describe how personnel and DSS expenses would be adjusted and if not proportionately reduced, why?**

For projects that are scaled down or split into phases, there is loss of economy of scale in labor, travel and contracts. DSS expenses are highly proportional to labor and contracts.

**Personnel**

**Has funding for these positions been requested in the past?**

Yes

**Please explain the overlap of past and future staffing and position levels previously received and how that is coordinated over multiple years?**

GRG: Each allocation is operationalized, budgeted, and tracked independently. Projects under each allocation are unique, and only actual personnel time is charged to these unique projects and allocations.

SCP is not requesting personnel reimbursement.

**Contracts**

**What is included in the contracts line?**

The R/E contracts are for CCMI and/or for-profit firms to implement field activities.

**Professional Services**

**What is included in the Professional Services line?**

- Other : Professional Services includes Tribal Consultation for traditional land management through the Tribal Historic Preservation Offices of the Upper Sioux Community, the Lower Sioux Indian Community and the Mille Lacs Band of Ojibwe.

**Travel**

**Does the amount in the travel line include equipment/vehicle rental?**

Yes

**Explain the amount in the travel line outside of traditional travel costs of mileage, food, and lodging**

Vehicle rental is occasionally necessary due to fleet or POV lack of availability. Vehicle rental can be competitive with the cost of mileage reimbursement, for longer trips.

**I understand and agree that lodging, meals, and mileage must comply with the current MMB Commissioner Plan:**

Yes

### **Direct Support Services**

**How did you determine which portions of the Direct Support Services of your shared support services is direct to this program?**

GRG: In a process approved by DNR in September 2019, GRG's direct support services rate includes all allowable direct and necessary expenditures not captured in other line items in the budget. Our DSS request to LSOHC is less than the amount allowed by the DNR approved rate, and less than or equal to 10% of the total allocation request.

### **Other Equipment/Tools**

**Give examples of the types of Equipment and Tools that will be purchased?**

Loppers, trowels, shovels, seed spreaders, chainsaws, brush cutters, sprayers, flagging, pin flags, PPE, GPS handheld, other equipment, or tools necessary for and directly related to supporting completion of proposed activities.

### **Federal Funds**

**Do you anticipate federal funds as a match for this program?**

No

## Output Tables

### Acres by Resource Type (Table 1)

Type	Wetland	Prairie	Forest	Habitat	Total Acres
Restore	0	0	0	0	0
Protect in Fee with State PILT Liability	0	0	0	0	0
Protect in Fee w/o State PILT Liability	0	0	0	0	0
Protect in Easement	0	0	0	0	0
Enhance	1	64	342	0	407
<b>Total</b>	<b>1</b>	<b>64</b>	<b>342</b>	<b>0</b>	<b>407</b>

### How many of these Prairie acres are Native Prairie? (Table 1b)

Type	Native Prairie (acres)
Restore	0
Protect in Fee with State PILT Liability	0
Protect in Fee w/o State PILT Liability	0
Protect in Easement	0
Enhance	64
<b>Total</b>	<b>64</b>

### Total Requested Funding by Resource Type (Table 2)

Type	Wetland	Prairie	Forest	Habitat	Total Funding
Restore	-	-	-	-	-
Protect in Fee with State PILT Liability	-	-	-	-	-
Protect in Fee w/o State PILT Liability	-	-	-	-	-
Protect in Easement	-	-	-	-	-
Enhance	\$4,000	\$480,000	\$1,654,000	-	\$2,138,000
<b>Total</b>	<b>\$4,000</b>	<b>\$480,000</b>	<b>\$1,654,000</b>	<b>-</b>	<b>\$2,138,000</b>

### Acres within each Ecological Section (Table 3)

Type	Metro/Urban	Forest/Prairie	SE Forest	Prairie	N. Forest	Total Acres
Restore	0	0	0	0	0	0
Protect in Fee with State PILT Liability	0	0	0	0	0	0
Protect in Fee w/o State PILT Liability	0	0	0	0	0	0
Protect in Easement	0	0	0	0	0	0
Enhance	72	335	0	0	0	407
<b>Total</b>	<b>72</b>	<b>335</b>	<b>0</b>	<b>0</b>	<b>0</b>	<b>407</b>

### Total Requested Funding within each Ecological Section (Table 4)

Type	Metro/Urban	Forest/Prairie	SE Forest	Prairie	N. Forest	Total Funding
Restore	-	-	-	-	-	-
Protect in Fee with State PILT Liability	-	-	-	-	-	-
Protect in Fee w/o State PILT Liability	-	-	-	-	-	-
Protect in Easement	-	-	-	-	-	-
Enhance	\$302,000	\$1,836,000	-	-	-	\$2,138,000
<b>Total</b>	<b>\$302,000</b>	<b>\$1,836,000</b>	<b>-</b>	<b>-</b>	<b>-</b>	<b>\$2,138,000</b>

### Average Cost per Acre by Resource Type (Table 5)

Type	Wetland	Prairie	Forest	Habitat
------	---------	---------	--------	---------

Restore	-	-	-	-
Protect in Fee with State PILT Liability	-	-	-	-
Protect in Fee w/o State PILT Liability	-	-	-	-
Protect in Easement	-	-	-	-
Enhance	\$4,000	\$7,500	\$4,836	-

**Average Cost per Acre by Ecological Section (Table 6)**

Type	Metro/Urban	Forest/Prairie	SE Forest	Prairie	N. Forest
Restore	-	-	-	-	-
Protect in Fee with State PILT Liability	-	-	-	-	-
Protect in Fee w/o State PILT Liability	-	-	-	-	-
Protect in Easement	-	-	-	-	-
Enhance	\$4,194	\$5,480	-	-	-

**Target Lake/Stream/River Feet or Miles**

800 ft lakeshore

**Parcels**

**Sign-up Criteria?**

No

**Explain the process used to identify, prioritize, and select the parcels on your list:**

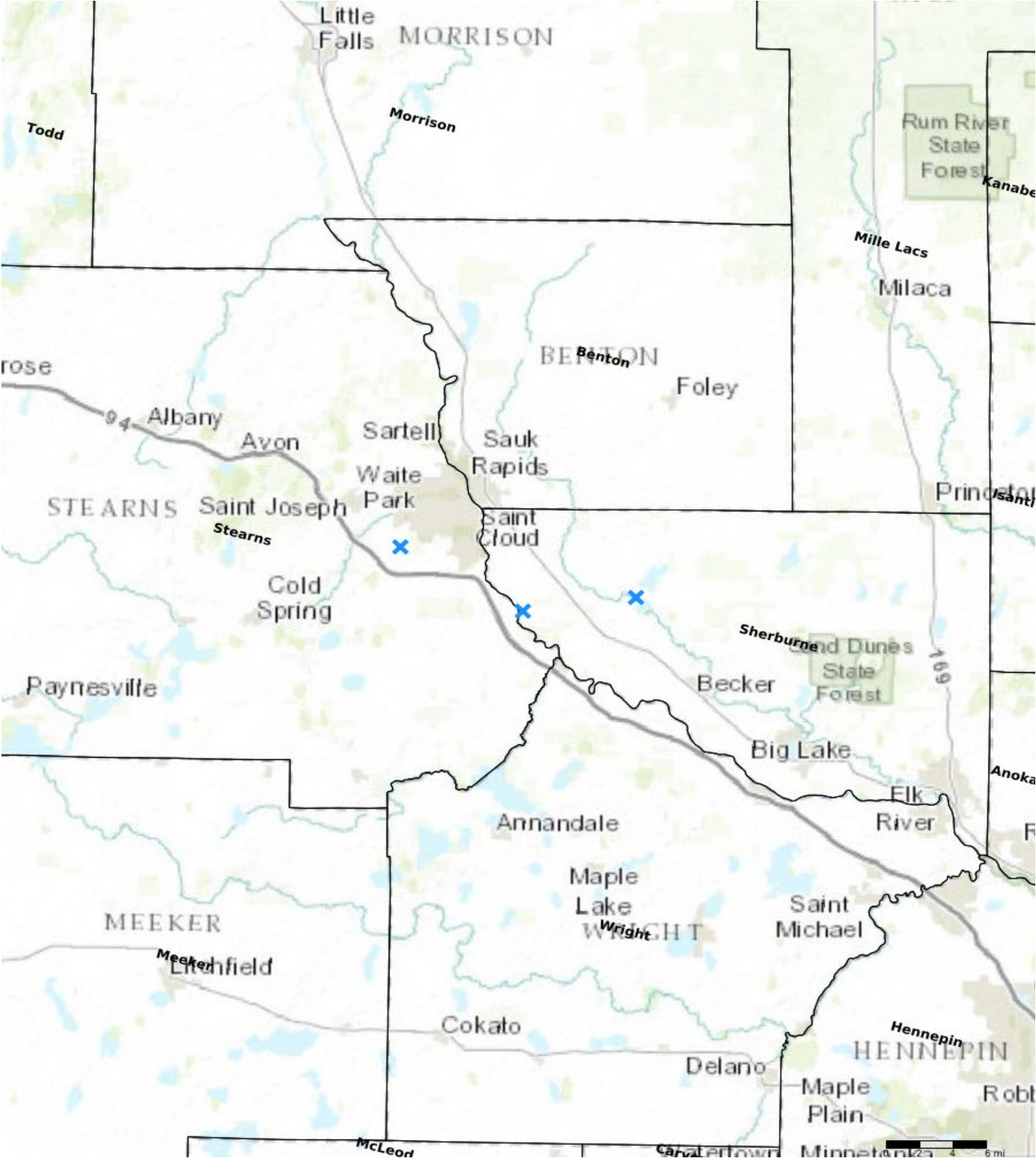
The ASP Partnership 10 - Year Strategic Conservation Action Plan utilizes multiple-criteria GIS analyses to identify and prioritize critical areas for habitat connectivity, SGCN, biodiversity, and native plant communities. For the ASP partnership’s strategic plan, multiple-criteria decision analyses in GIS were performed to identify and prioritize critical areas for habitat using data sources layers that capture habitat connectivity, habitats that support species in greatest conservation need, terrestrial and aquatic sites of biodiversity, potential locations of groundwater influenced shallow wetlands, and native plant communities.

Partners used their local expertise, knowledge, and landowner contacts to identify parcels and scope out the activities. DNR parcels were submitted to DNR for review. At multiples points in the process, the direct recipients reviewed the parcel list collectively and culled parcels that did not rank highly on the Strategic Plan criteria. At multiples points in the process, the direct recipients reviewed the parcels collectively.

**Restore / Enhance Parcels**

<b>Name</b>	<b>County</b>	<b>TRDS</b>	<b>Acres</b>	<b>Est Cost</b>	<b>Existing Protection</b>
SCP - Island View County Park	Sherburne	03430205	13	\$60,000	Yes
SCP - Big Elk Lake County Park Phase 2	Sherburne	03529233	60	\$242,000	Yes
GRG - Quarry Park & Reserve (SNA) Phase 2	Stearns	12428230	335	\$1,836,000	Yes

Parcel Map



- Protect in Easement
- ▲ Protect in Fee with PILT
- Protect in Fee W/O PILT
- ★ Restore
- ✕ Enhance
- ⊕ Other



# Anoka Sand Plain Habitat Conservation - Phase 9

- ◆ Restore/Enhance 407 acres of prairie, oak savanna, wetlands, and fire-dependent woodlands
- ◆ Enhance 800' of shoreline.
- ◆ Phase 2 for Big Elk Lake, and Quarry Park & Reserve; Phase 1 for Island View

## ASP Partnership Project Examples



### **Big Elk Lake Phase1 ASP8 ML23**

Restore 160 acres of prairie.  
Enhance 50 acres of oak savanna.



### **Blaine Preserve SNA ASP6**

Invasive species and woody removal to restore wet prairie with multiple rare species.



### **Rum River Floodplain Forest**

**ASP4**  
Tree planting, invasive species and erosion control to repair fragmented floodplain forest along the Rum River.

## Priorities based on:

DNR's Wildlife Action Network

ASP Partnership Strategic Plan

MBS Biodiversity Significance

Habitat Connectivity

Native Plant Communities

Species in Greatest Conservation Need

Threatened/Endangered/Special Concern

# Anoka Sand Plain Partnership Accomplishments Phases 1 - 7

## Acres Protected

**Proposed: 530**

**Completed: 794**

*additional acres  
in progress*

## Acres Restored/Enhanced

**Proposed: 9,083**

**Completed: 12,421**

*additional acres in progress*



The Anoka Sand Plain Partnership

### **VISION**

*Protection, restoration and enhancement to increase biological diversity, habitat connectivity and landscape resilience in the Anoka Sand Plain.*

### **OPPORTUNITY**

*Over 72,000 acres in the ASP Ecoregion are ranked Outstanding or High Biodiversity by the Minnesota County Biological Survey.*

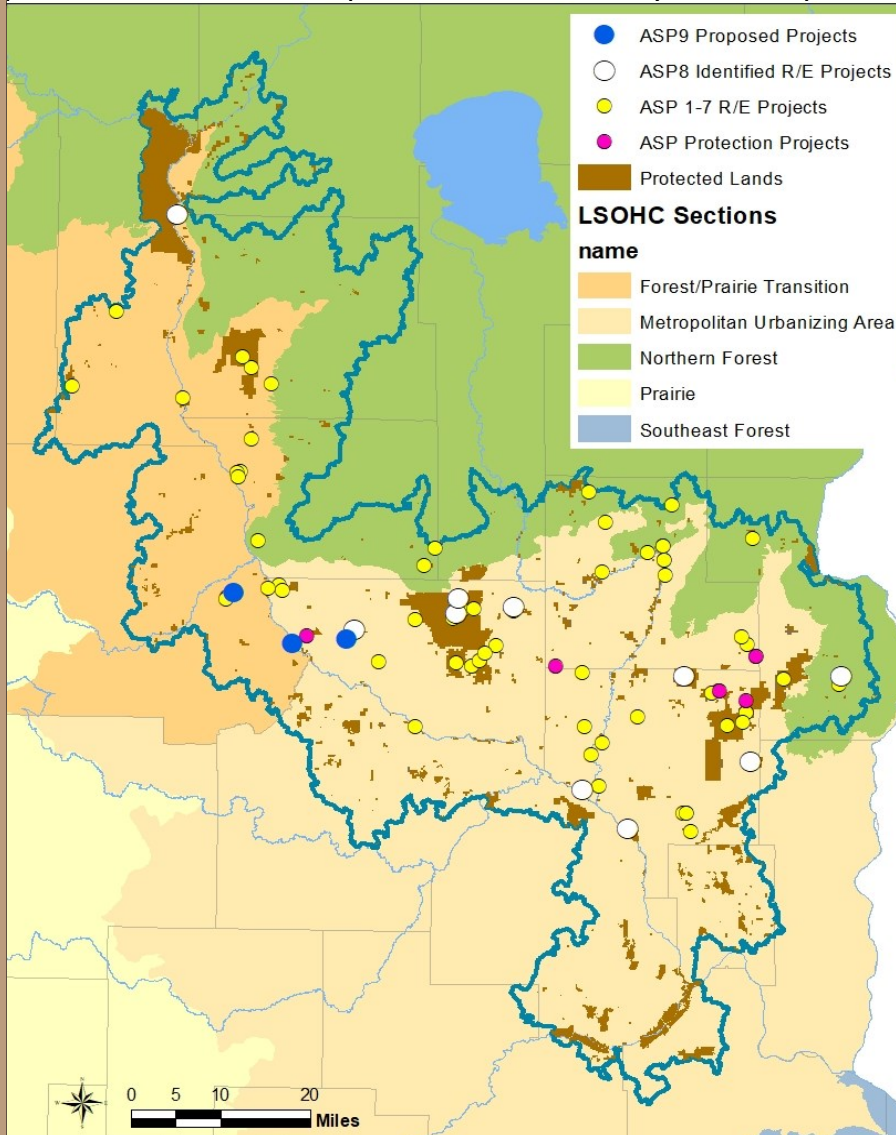
*The ASP provides habitat for 97 Species in Greatest Conservation Need.*

*131 MN Endangered, Threatened, Special Concern species in the ASP.*

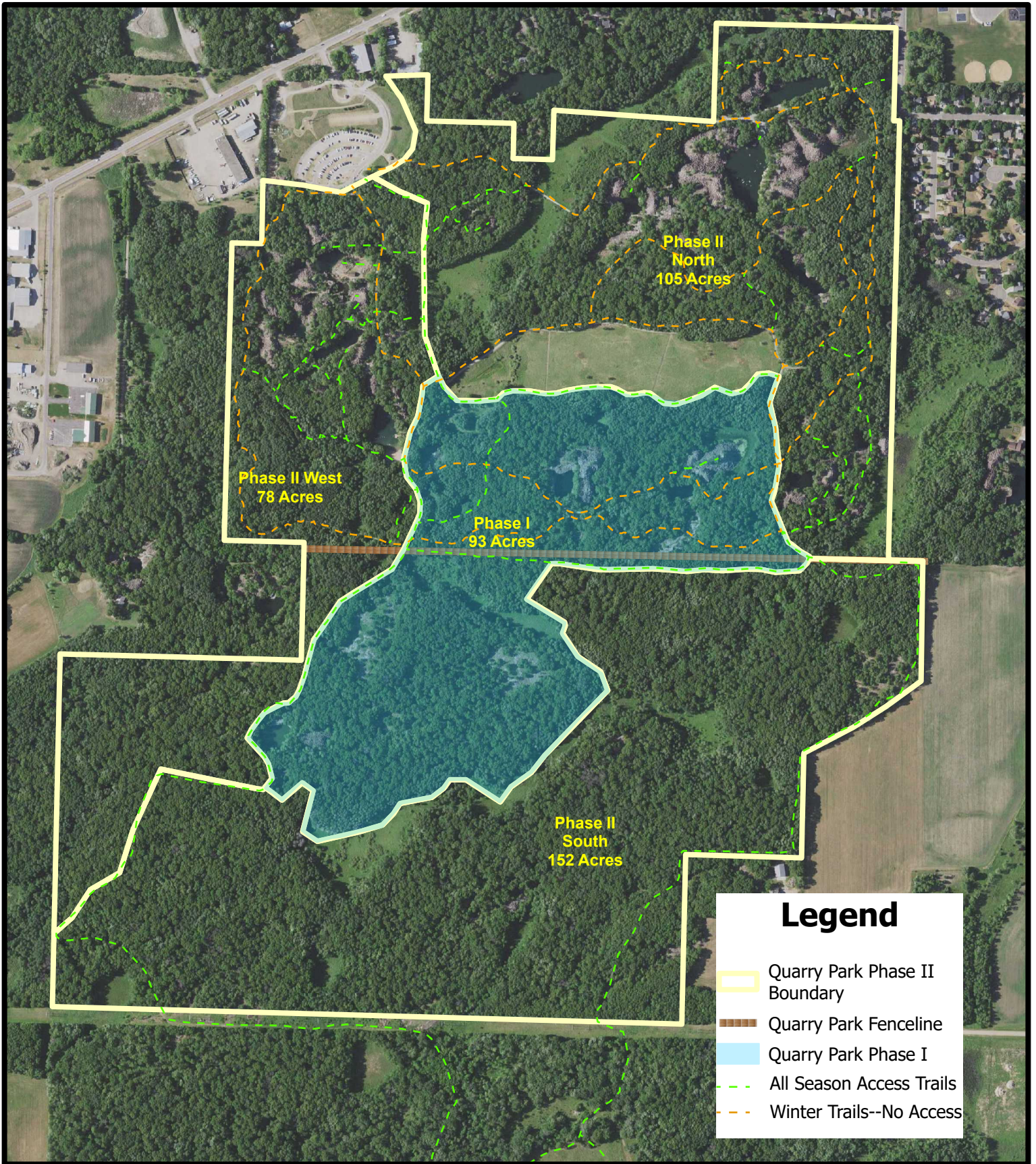
### **URGENCY**

*State-wide projected growth through 2045 is estimated at 7% while growth in Anoka and Sherburne counties is 14% and 24% respectively.*

ASP Phases 1-8 Projects with ASP 9 Proposed Projects







# Quarry Park Phase II Management Units



0 500 1,000 2,000 Feet

