



## Lessard-Sams Outdoor Heritage Council

Cannon River Watershed Habitat Protection and Restoration Program - Phase 13  
ML 2024 Request for Funding

---

### General Information

**Date:** 06/23/2023

**Proposal Title:** Cannon River Watershed Habitat Protection and Restoration Program - Phase 13

**Funds Requested:** \$6,400,000

**Confirmed Leverage Funds:** \$230,900

**Is this proposal Scalable?:** Yes

### Manager Information

**Manager's Name:** Jennifer Tonko

**Title:** Executive Director

**Organization:** Clean River Partners

**Address:** 205 Water Street S Suite 1

**City:** Northfield, MN 55057

**Email:** jennifer@cleanriverpartners.org

**Office Number:** 507-786-3913

**Mobile Number:**

**Fax Number:**

**Website:** <https://cleanriverpartners.org/>

### Location Information

**County Location(s):** Goodhue, Rice, Le Sueur, Steele and Waseca.

**Eco regions in which work will take place:**

- Prairie
- Southeast Forest

**Activity types:**

- Protect in Fee
- Restore
- Enhance

**Priority resources addressed by activity:**

- Wetlands

- Prairie
- Forest
- Habitat

## Narrative

### **Abstract**

The Cannon River Watershed Habitat Protection and Restoration Program will protect approximately 450 acres in fee, and restore or enhance approximately 327 acres of high priority wildlife habitat within the Cannon River Watershed, including wetlands, prairies, forests, and river/shallow lake shoreline. Its goal is to protect existing high quality habitat, restore degraded habitat, prevent degradation of water quality, and provide public access.

### **Design and Scope of Work**

The Cannon River Watershed Habitat Protection and Restoration Program - Phase 13 will continue to protect, restore, and create public access opportunities to high-quality habitat lands throughout the Cannon River Watershed. It will increase the amount of restored habitat on public lands available for hunting and angling within an easy drive for over half of Minnesota's population.

Located south of the Twin Cities, the 1,460 square mile Cannon River Watershed includes over 800 linear miles of streams and rivers that drain a diverse landscape. This area has seen increased development pressure due to the transportation ease of the I-35 corridor and the attraction of the Cannon Lakes, and much of this area has already suffered fragmentation and habitat loss. Historically comprising a mosaic of habitats, including prairie, oak savanna, and Big Woods, the watershed is now dominated by agricultural fields and, to a lesser extent, urban development. Agricultural practices and shoreline development are the major contributors to the impaired status of stretches of the Cannon River and its associated lakes and streams.

Part of a multi-year, multi-partner strategy, this program streamlines the coordination of protecting and restoring targeted parcels of land that positively contribute to large complexes of forests, restored prairies, wetlands, lakeshore, and river shoreline. Since 1990, Clean River Partners has been the local expert of the watershed, and will coordinate this program, providing program administration and landowner outreach. Fee-title acquisitions led by The Trust for Public Land (TPL) will target large wetland/upland complexes, rare biomes (prairie, oak savanna, and Big Woods forest), shallow lakes, river shoreline, and lands adjacent to existing public land. TPL will convey lands to the DNR except when local governmental unit ownership is appropriate. Ongoing partnerships are critical in identifying priority conservation opportunities and protection strategies for the existing high biodiversity areas.

Parcels targeted for enhancement will be evaluated by Great River Greening (GRG) in collaboration with MN DNR, County and USFWS personnel to determine existing and desired conditions for each site. Information gathered will be used to develop site specific work plans for enhancing ecologically desired habitats. Project management plans will detail the methods, practices and a timeline for successful completion of each site/project. Practices could include invasive species removal, controlled burning, chemical treatment, reseeding and/or plug planting, tree stand thinning, wetland hydrology restoration, and shoreline revetments using native materials. Enhancements will be aimed at improving habitat and protecting water quality for the benefit of all wildlife and human communities.

In recent years, collaboration among partners has accelerated local awareness and created strong and growing interest in land protection and habitat restoration opportunities. Continuing our collaboration and building on this momentum, we seek to increase capacity to deliver permanent land protection and habitat improvement

opportunities to protect well-connected functional forests, prairies, wetlands, lakeshores, and river shorelines that sustain and enhance native species and provide high quality outdoor recreation experiences.

### **Explain how the proposal addresses habitat protection, restoration, and/or enhancement for fish, game & wildlife, including threatened or endangered species conservation**

The areas targeted by TPL have been identified and prioritized through state, regional and local natural resource plans due to their high biodiversity qualities and connectivity to existing public lands. Protection will occur through fee title acquisition, and will target Big Woods, oak savannas, wetlands and sensitive shoreline communities within the Cannon River Watershed. GRG will conduct significant habitat restoration and enhancement work on protected conservation lands identified by DNR and County staff within the watershed. The aim is to improve habitat values for wildlife and Species in Greatest Conservation Need (SGCN), including birds using the Mississippi River migratory corridor and pollinators. Work will restore and enhance riverine, forest, wetland, oak savanna, and prairie habitat at 9 conservation sites.

Protection, restoration and/or enhancement of these significant parcels will provide critical habitat for game species, including upland birds (dove, turkey, pheasant, and woodcock), white tail deer, migratory waterfowl (mallard, canvasback, wood duck, hooded merganser, pintail, and lesser scaup), and aquatic species (trout, northern pike, black crappie, bluegill, and walleye). Protection will also provide access for a diversity of recreational experiences including duck, pheasant, turkey and deer hunting as well as river, stream, and lake fishing. Nongame wildlife, including SGCN, that also benefit from this effort includes bald eagle, Bell's vireo, cerulean warbler, loggerhead shrike, Sandhill crane, red-headed woodpecker, greater yellowlegs, buffbreasted sandpiper, rusty patched bumble Bee, Blanding's turtle, wood turtle, mudpuppies, and the giant floater, a species of freshwater mussel.

### **What are the elements of this proposal that are critical from a timing perspective?**

Today, only 18% of the landscape in the Cannon River Watershed remains as forest, wetland or prairie habitat and many of these areas have been degraded by invasive species. Protection, restoration, and enhancement of the region's unimpaired waters and increasingly vital habitat are critically important now before they become further degraded by invasive species or by residential development and agricultural pressures. Failing to protect, restore or enhance these habitats now will result in increased restoration costs in the future. Current Outdoor Heritage Funds appropriated to this program for habitat protection have been fully allocated to existing projects to date. Many additional parcels with high quality habitat remain unprotected, with interested landowners willing to discuss protection opportunities for their land. Without additional funding, these lands are at risk to be sold on the open market and we will have lost existing opportunities to create new public access and outdoor recreation experiences.

### **Describe how the proposal expands habitat corridors or complexes and/or addresses habitat fragmentation:**

This program uses information from the Wildlife Action Network, Minnesota County Biological Survey, and several analysis tools to identify priority lands for protection and restoration creating and expanding conservation corridors and habitat complexes. In addition, we will consult several watershed-wide landscape planning efforts such as the Cannon River Watershed Landscape Stewardship Plan, the Cannon River Watershed - Watershed Restoration and Protection Strategies (WRAPS), and the Cannon River Watershed Comprehensive Management Plan approved by Minnesota's Board of Water and Soil Resources and ratified by the Cannon River Watershed Joint Powers Board.

**Which Conservation Plans referenced in MS97A.056, subd. 3a are most applicable to this project?**

- Minnesota's Wildlife Action Plan 2015-2025
- Outdoor Heritage Fund: A 25 Year Framework

**Explain how this proposal will uniquely address habitat resilience to climate change and its anticipated effects on game, fish & wildlife species utilizing the protected or restored/enhanced habitat this proposal targets.**

This program targets those lands for protection and enhancement that provide the best opportunities for maintaining biodiversity and increasing connectivity which are the foundation of a resilient landscape. Enhancement activities will prioritize climate resiliency by sourcing seed, plugs, and seedlings with preference to southern Minnesota sources. This program’s integration of protection and restoration at a watershed scale supports the resiliency of the landscape by protecting and buffering large core areas and increasing connections that facilitate species movement and adaptation to stressors, including those accelerated by a changing climate. GRG is pursuing the acquisition of a mobile biochar unit to process biomass onsite that is removed during restoration and enhancement. GRG will also conduct education on using biochar in natural resources management. Biochar can offer a climate-friendly alternative to pile burning; protect habitat by reducing burn scars; and can be a soil amendment in highly degraded sites.

**Which LSOHC section priorities are addressed in this proposal?**

**Prairie**

- Protect, enhance, or restore existing wetland/upland complexes, or convert agricultural lands to new wetland/upland habitat complexes

**Southeast Forest**

- Protect forest habitat through acquisition in fee or easement to prevent parcelization and fragmentation and to provide the ability to access and manage landlocked public properties

**Describe how this project/program will produce and demonstrate a significant and permanent conservation legacy and/or outcomes for fish, game, and wildlife, and if not permanent outcomes, why it is important to undertake at this time:**

Our program, through land protection and restoration, will continue to prevent degradation and loss of quality habitat in the Prairie and Southeast Forest section of Minnesota, specifically the Cannon River Watershed. This work will improve and increase the amount of available public lands for hunting and angling opportunities within an hour drive for over half of the State’s population, and will lead to larger complexes of restored prairies, oak savannas, wetlands, lakeshore, and river shoreline which will reduce flood potential and degradation of aquatic habitat.

We work in partnership with local, state, and federal agencies, and with willing conservation-minded landowners. High quality lands are protected through fee title acquisition. Through our program, these newly acquired and protected lands, along with lands that are already protected but in a degraded state, are targeted for enhancement. The lands protected through this program are now available for the public to access for outdoor recreation activities, including hunting and fishing. To date, this multi-year program has permanently protected more than 2,900 acres and restored or enhanced 337 acres in the Cannon River Watershed utilizing Outdoor Heritage Funds. According to a spatial driveshed analysis conducted by TPL, over 3.4 million people live within an hour’s drive of the lands protected through the Cannon River Watershed program. On-going outreach to landowners and public

agencies indicate continued significant interest in permanently protecting and restoring more land with high biological significance in this valuable watershed.

## Outcomes

### Programs in prairie region:

- Key core parcels are protected for fish, game and other wildlife ~ *Core parcels are identified in partnership with the DNR, counties, as well as and the partners of the Cannon River Watershed Habitat Protection and Restoration Program. Success will be determined based on the acreage of lands protected, restored, and enhanced and the percentage of protected lands in the watershed.*

### Programs in southeast forest region:

- High priority riparian lands, forestlands, and savannas are protected from parcelization and fragmentation ~ *Core parcels are identified in partnership with the DNR as well as the partners of the Cannon River Watershed Habitat Protection and Restoration Program. Success will be determined based on the acreage of lands protected, restored, and enhanced and the percentage of protected lands in the watershed.*

### What other dedicated funds may collaborate with or contribute to this proposal?

- Other
- Clean Water Fund
- Arts and Cultural Heritage Fund

### Per MS 97A.056, Subd. 24, Please explain whether the request is supplanting or is a substitution for any previous funding that was not from a legacy fund and was used for the same purpose.

This proposal does not substitute or supplant previous funding that was not from a Legacy fund.

### How will you sustain and/or maintain this work after the Outdoor Heritage Funds are expended?

Once land has been acquired and conveyed to the DNR, initial site development and restoration of these lands will begin. Estimated costs for initial restoration or enhancement work are included in this proposal. TPL will work with DNR to complete a restoration or enhancement management plan, and implementation of that plan will be completed in the following years. These properties will be managed and maintained by the DNR according to their guidelines.

In collaboration with DNR, County and USFWS personnel, parcels targeted for restoration will be evaluated by GRG to determine existing and desired conditions for each site. Information gathered will be used to develop site-specific scope of work plans for restoring ecologically desired habitats. Project management plans will detail the methods and practices to be used and a timeline for successful completion of each site/project and maintenance in the future. After funds are expended, sites will be in a condition that the landowner will be able to maintain.

### Actions to Maintain Project Outcomes

Year	Source of Funds	Step 1	Step 2	Step 3
2025	TPL - DNR	Develop restoration/management plan for property	Restore and steward property for habitat and public recreation	-
2026	TPL - OHF and DNR	Post property	Develop restoration/management plan for property	-

2027	TPL - DNR	Restore and steward property for habitat and public recreation	-	-
2025	GRG - OHF	Perform site evaluation and assessment in collaboration with DNR	Develop R/E plan for property. Begin monitoring	Initiate site preparation from R/E work. Continue monitoring
2026	GRG - OHF	Continue R/E and begin stewardship. Target actions to maintain habitat.	Restorative action to correct damage as needed	Evaluate progress and determine if additional actions are needed
2027	GRG - OHF	Initiate R/E work	Continue R/E depending on appropriate methods and time of year	Continue R/E and begin stewardship as needed using appropriate methods and dependent on time of year

**Provide an assessment of how your program may celebrate cultural diversity or reach diverse communities in Minnesota, including reaching low- and moderate-income households:**

This program involves, engages, and benefits BIPOC and diverse communities through focused events that leverage Outdoor Heritage Funds. For example, recent efforts, funded through other sources, have focused on increasing the engagement of BIPOC and diverse communities across the watershed in volunteer events at sites protected and restored using past OHF appropriations. Additionally, also through different funding sources, some of this program’s recent acquisition and restoration projects focus on protection of the environment and water quality while creating much-needed recreational opportunities targeting disadvantaged areas (based upon housing, income and wastewater thresholds) with significant BIPOC communities. Our partners actively encourage residents who live near habitat restoration sites and create programs specifically for people from diverse backgrounds opening up opportunities to pursue environmental careers such as GRG's Future Stewards Program.

Protecting, restoring, and enhancing diverse and resilient habitat benefits all Minnesotans. It keeps our air and water cleaner, mitigates the impacts of climate change, and conserves the biological diversity that belongs to everyone. Public land provides an opportunity for recreation and health to those who do not have access to private natural lands, whether that be for hunting, fishing, hiking, or other outdoor pursuits.

Moving forward, we will continue our outreach to BIPOC communities and remain eager to expand this important work in a way that more directly, and authentically, engages diverse communities and partners in an equitable and just manner.

**Activity Details**

**Requirements**

**If funded, this proposal will meet all applicable criteria set forth in MS 97A.056?**

Yes

**Will county board or other local government approval be formally sought\*\* prior to acquisition, per 97A.056 subd 13(j)?**

No

**Describe any measures to inform local governments of land acquisition under their jurisdiction:**

We will follow the County/Township Board notification processes as directed by the current statutory language.

**Is the land you plan to acquire (fee title) free of any other permanent protection?**

Yes

**Will restoration and enhancement work follow best management practices including MS 84.973 Pollinator Habitat Program?**

Yes

**Is the restoration and enhancement activity on permanently protected land per 97A.056, Subd 13(f), tribal lands, and/or public waters per MS 103G.005, Subd. 15 or on lands to be acquired in this program?**

Yes

**Where does the activity take place?**

- WMA
- SNA
- AMA
- Permanently Protected Conservation Easements
- County/Municipal
- State Forests

**Land Use**

**Will there be planting of any crop on OHF land purchased or restored in this program?**

Yes

**Explain what will be planted:**

For lands acquired that are conveyed as WMAs to the DNR, the DNR has indicated the following: The primary purposes of WMAs are to develop and manage for the production of wildlife and for compatible outdoor recreation. To fulfill those goals, the DNR may use limited farming specifically to enhance or benefit the management of state lands for wildlife. Lands proposed to be acquired as WMAs may utilize farming to prepare previously farmed sites for native plant seeding. This is a standard practice across the Midwest. On a small percentage of WMAs (less than 2.5%), DNR uses farming to provide a winter food source for a variety of wildlife species in agriculture-dominated landscapes largely devoid of winter food sources. In some cases this necessitates the use of GMO treated products to facilitate herbicide use in order to control weeds present in the seedbank, however, neonicotinoids will not be used.

**Will neonicotinoid pesticide products be used within any activities of this proposal?**

No

**Is this land currently open for hunting and fishing?**

No

**Will the land be open for hunting and fishing after completion?**

Yes

**Describe any variation from the State of Minnesota regulations:**

NA



**Who will eventually own the fee title land?**

- State of MN
- County
- Other : Municipality

**Land acquired in fee will be designated as a:**

- AMA
- State Forest
- County Forest
- SRA
- Other

**Are there currently trails or roads on any of the proposed acquisitions?**

Yes

**Describe the types of trails or roads and the allowable uses:**

No new trails are planned on prospective acquisitions, but if new trail segments or alignments are added, generally there would be a "no net gain of trails." In other words, if a new trail segment was created an equal amount of preexisting trail would be restored to natural habitat.

**Will the trails or roads remain and uses continue to be allowed after OHF acquisition?**

Yes

**How will maintenance and monitoring be accomplished?**

Any trails on land conveyed to DNR will be managed per DNR policy for WMA's, AMA's, SNA's, or State Forests. Any trails on land conveyed to local units of government will be managed per a maintenance and monitoring plan developed in consultation with LSOHC staff.

**Will new trails or roads be developed or improved as a result of the OHF acquisition?**

No

**Will the land that you acquire (fee or easement) be restored or enhanced within this proposal's funding and availability?**

Yes

**Other OHF Appropriation Awards**

**Have you received OHF dollars in the past through LSOHC that are current OPEN appropriations?**

Yes

Approp Year	Funding Amount Received	Amount Spent to Date	Funding Remaining	% Spent to Date
23	\$2,981,000	-	-	-
22	\$2,636,000	\$1,231,142	\$1,404,858	46.7%
21	\$2,623,000	\$1,703,098	\$919,902	64.93%
20	\$1,148,000	\$964,771	\$183,229	84.04%
18	\$1,345,000	\$1,291,722	\$53,278	96.04%
17	\$1,436,000	\$1,424,700	\$11,300	99.21%
16	\$583,000	\$583,000	-	100.0%
15	\$1,380,000	\$1,380,000	-	100.0%
14	\$1,430,000	\$1,430,000	-	100.0%



13	\$1,780,000	\$1,780,000	-	100.0%
12	\$1,760,000	\$1,760,000	-	100.0%
11	\$1,533,000	\$1,533,000	-	100.0%
Totals	\$20,635,000	\$15,081,433	\$5,553,567	73.09%

**Timeline**

Activity Name	Estimated Completion Date
Land acquired	June 30, 2027
Landowner negotiations, agreements and due diligence	June 30, 2026
Finalize restoration and enhancement plans	June 30, 2025
Initial site development	Fall 2029
Restoration and enhancement	June 30, 2029

Budget

**Grand Totals Across All Partnerships**

<b>Item</b>	<b>Funding Request</b>	<b>Total Leverage</b>	<b>Leverage Source</b>	<b>Total</b>
Personnel	\$644,000	-	-, Private Sourced	\$644,000
Contracts	\$1,607,000	-	-	\$1,607,000
Fee Acquisition w/ PILT	\$2,754,000	-	-	\$2,754,000
Fee Acquisition w/o PILT	\$756,000	-	-	\$756,000
Easement Acquisition	-	-	-	-
Easement Stewardship	-	-	-	-
Travel	\$25,000	\$4,000	Private Sourced, Private Sourced	\$29,000
Professional Services	\$106,000	-	-	\$106,000
Direct Support Services	\$219,000	\$199,900	Private Sourced, Private Sourced, Private Sourced	\$418,900
DNR Land Acquisition Costs	\$70,000	-	-	\$70,000
Capital Equipment	\$25,000	\$25,000	-, Privately Sourced	\$50,000
Other Equipment/Tools	\$7,000	-	-	\$7,000
Supplies/Materials	\$137,000	\$2,000	Private Sourced	\$139,000
DNR IDP	\$50,000	-	-	\$50,000
<b>Grand Total</b>	<b>\$6,400,000</b>	<b>\$230,900</b>	-	<b>\$6,630,900</b>

**Partner: The Trust For Public Land**

**Totals**

Item	Funding Request	Total Leverage	Leverage Source	Total
Personnel	\$250,000	-	-	\$250,000
Contracts	\$30,000	-	-	\$30,000
Fee Acquisition w/ PILT	\$2,754,000	-	-	\$2,754,000
Fee Acquisition w/o PILT	\$756,000	-	-	\$756,000
Easement Acquisition	-	-	-	-
Easement Stewardship	-	-	-	-
Travel	-	\$2,000	Private Sourced	\$2,000
Professional Services	\$106,000	-	-	\$106,000
Direct Support Services	\$69,000	\$69,000	Private Sourced	\$138,000
DNR Land Acquisition Costs	\$70,000	-	-	\$70,000
Capital Equipment	-	-	-	-
Other Equipment/Tools	-	-	-	-
Supplies/Materials	-	-	-	-
DNR IDP	\$50,000	-	-	\$50,000
<b>Grand Total</b>	<b>\$4,085,000</b>	<b>\$71,000</b>	-	<b>\$4,156,000</b>

**Personnel**

Position	Annual FTE	Years Working	Funding Request	Total Leverage	Leverage Source	Total
Protection and Legal Staff	0.48	3.0	\$250,000	-	-	\$250,000

**Partner: Great River Greening**

**Totals**

Item	Funding Request	Total Leverage	Leverage Source	Total
Personnel	\$274,000	-	Private Sourced	\$274,000
Contracts	\$1,572,000	-	-	\$1,572,000
Fee Acquisition w/ PILT	-	-	-	-
Fee Acquisition w/o PILT	-	-	-	-
Easement Acquisition	-	-	-	-
Easement Stewardship	-	-	-	-
Travel	\$25,000	-	-	\$25,000
Professional Services	-	-	-	-
Direct Support Services	\$118,000	\$127,900	Private Sourced	\$245,900
DNR Land Acquisition Costs	-	-	-	-
Capital Equipment	\$25,000	\$25,000	Privately Sourced	\$50,000
Other Equipment/Tools	\$7,000	-	-	\$7,000
Supplies/Materials	\$137,000	-	-	\$137,000
DNR IDP	-	-	-	-
<b>Grand Total</b>	<b>\$2,158,000</b>	<b>\$152,900</b>	-	<b>\$2,310,900</b>

**Personnel**

Position	Annual FTE	Years Working	Funding Request	Total Leverage	Leverage Source	Total
Great River Greening Personnel	0.68	5.0	\$274,000	-	Private Sourced	\$274,000

**Capital Equipment**

Item	Funding Request	Total Leverage	Leverage Source	Total
Mobile Biochar Unit	\$25,000	\$25,000	Privately Sourced	\$50,000

**Partner: Clean River Partners**

**Totals**

Item	Funding Request	Total Leverage	Leverage Source	Total
Personnel	\$120,000	-	-	\$120,000
Contracts	\$5,000	-	-	\$5,000
Fee Acquisition w/ PILT	-	-	-	-
Fee Acquisition w/o PILT	-	-	-	-
Easement Acquisition	-	-	-	-
Easement Stewardship	-	-	-	-
Travel	-	\$2,000	Private Sourced	\$2,000
Professional Services	-	-	-	-
Direct Support Services	\$32,000	\$3,000	Private Sourced	\$35,000
DNR Land Acquisition Costs	-	-	-	-
Capital Equipment	-	-	-	-
Other Equipment/Tools	-	-	-	-
Supplies/Materials	-	\$2,000	Private Sourced	\$2,000
DNR IDP	-	-	-	-
<b>Grand Total</b>	<b>\$157,000</b>	<b>\$7,000</b>	-	<b>\$164,000</b>

**Personnel**

Position	Annual FTE	Years Working	Funding Request	Total Leverage	Leverage Source	Total
Clean River Partners Staff	0.4	3.0	\$120,000	-	-	\$120,000

**Amount of Request:** \$6,400,000

**Amount of Leverage:** \$230,900

**Leverage as a percent of the Request:** 3.61%

**DSS + Personnel:** \$863,000

**As a % of the total request:** 13.48%

**Easement Stewardship:** -

**As a % of the Easement Acquisition:** -

Total Leverage (from above)	Amount Confirmed	% of Total Leverage	Amount Anticipated	% of Total Leverage
\$230,900	\$230,900	100.0%	-	0.0%

**Detail leverage sources and confirmation of funds:**

The partnership provides privately sourced leverage for more than 90 percent of our DSS costs; all of Clean River Partners' and TPL's travel costs; and half of GRG's capital purchase. The partnership also attempts to bring various state, local and private funds to acquire property and conduct enhancements/restorations.

**Does this proposal have the ability to be scalable?**

Yes

### If the project received 50% of the requested funding

**Describe how the scaling would affect acres/activities and if not proportionately reduced, why?**

A reduction in funding would reduce outputs (acres/activities) somewhat proportionately. Loss of economy of scale on project management including RFP and contract management would result. The mobile biochar unit is not scalable. The scalability of budget items for restorations and enhancements is dependent on which sites are funded.

**Describe how personnel and DSS expenses would be adjusted and if not proportionately reduced, why?**

Program management costs (personnel, travel, and DSS expenses) will be reduced as well, but not exactly proportionately because program development, coordination and oversight costs remain consistent regardless of appropriation amount.

### If the project received 30% of the requested funding

**Describe how the scaling would affect acres/activities and if not proportionately reduced, why?**

A reduction in funding would reduce outputs (acres/activities) somewhat proportionately. Loss of economy of scale on project management including RFP and contract management would result. The mobile biochar unit is not scalable. The scalability of budget items for restorations and enhancements is dependent on which sites are funded.

**Describe how personnel and DSS expenses would be adjusted and if not proportionately reduced, why?**

Program management costs (personnel, travel, and DSS expenses) will be reduced as well, but not exactly proportionately because program development, coordination and oversight costs remain consistent regardless of appropriation amount.

### Personnel

**Has funding for these positions been requested in the past?**

Yes

**Please explain the overlap of past and future staffing and position levels previously received and how that is coordinated over multiple years?**

FTEs listed are an estimate of the personnel time required to produce the grant deliverables put forward in this proposal. An array of staff draw from these funds for legal work, negotiating with landowners, crafting of acquisition documents, coordinating with agency partners, working with contractors, restoration and enhancement activities, conducting landowner outreach, and managing the grant. We use only those personnel funds necessary to achieve the goals of the program.

### Contracts

**What is included in the contracts line?**

Clean River Partners contract line includes accounting service cost.

TPL's contract line includes potential site clean-up and initial restoration activities.

GRG's contract line includes restoration/enhancement contracts by service providers.

## Professional Services

### What is included in the Professional Services line?

- Appraisals
- Other : Environmental site assessments
- Surveys
- Title Insurance and Legal Fees

## Fee Acquisition

### What is the anticipated number of fee title acquisition transactions?

We anticipate we will close 2 to 3 transactions and investigate others.

## Travel

### Does the amount in the travel line include equipment/vehicle rental?

Yes

### Explain the amount in the travel line outside of traditional travel costs of mileage, food, and lodging

NA

### I understand and agree that lodging, meals, and mileage must comply with the current MMB Commissioner Plan:

Yes

## Direct Support Services

### How did you determine which portions of the Direct Support Services of your shared support services is direct to this program?

Clean River Partners' DSS rate has been approved by the DNR in 2022. About 9.5% of Clean River Partners' DSS is provided by privately sourced leverage.

TPL's DSS request is based upon its federal rate which has been approved by the MN DNR and 50% of these costs are requested from the OHF grant while 50% is contributed as privately sourced leverage.

GRG's DSS rate has been approved by the DNR on October 4, 2019. GRG's DSS rate includes the allowable direct and necessary expenditures that are not captured in other line items in the budget. A portion, not exceeding 50%, of these costs are requested from the grant and the balance is contributed as privately sourced leverage.

## Other Equipment/Tools

### Give examples of the types of Equipment and Tools that will be purchased?

Hand tools, saws, brush cutters, personal protective equipment, burn equipment, seed collection equipment, repairs and other necessary equipment to complete restoration and enhancement activities. For capital equipment, GRG is requesting funds for the purchase of mobile biochar units for all forest enhancement project sites. This funding request is for 50% of the cost of the mobile biochar units. The total request will be spread equally across GRG's proposals. The other 50% of the cost will be paid by matching funds.



**Federal Funds**

**Do you anticipate federal funds as a match for this program?**

No

## Output Tables

### Acres by Resource Type (Table 1)

Type	Wetland	Prairie	Forest	Habitat	Total Acres
Restore	3	0	10	0	13
Protect in Fee with State PILT Liability	88	112	112	88	400
Protect in Fee w/o State PILT Liability	25	0	0	25	50
Protect in Easement	0	0	0	0	0
Enhance	53	72	189	0	314
<b>Total</b>	<b>169</b>	<b>184</b>	<b>311</b>	<b>113</b>	<b>777</b>

### Total Requested Funding by Resource Type (Table 2)

Type	Wetland	Prairie	Forest	Habitat	Total Funding
Restore	\$23,000	-	\$66,000	-	\$89,000
Protect in Fee with State PILT Liability	\$819,000	\$1,036,000	\$1,036,000	\$819,000	\$3,710,000
Protect in Fee w/o State PILT Liability	\$228,000	-	-	\$227,000	\$455,000
Protect in Easement	-	-	-	-	-
Enhance	\$411,000	\$419,000	\$1,316,000	-	\$2,146,000
<b>Total</b>	<b>\$1,481,000</b>	<b>\$1,455,000</b>	<b>\$2,418,000</b>	<b>\$1,046,000</b>	<b>\$6,400,000</b>

### Acres within each Ecological Section (Table 3)

Type	Metro/Urban	Forest/Prairie	SE Forest	Prairie	N. Forest	Total Acres
Restore	0	0	0	13	0	13
Protect in Fee with State PILT Liability	0	0	0	400	0	400
Protect in Fee w/o State PILT Liability	0	0	0	50	0	50
Protect in Easement	0	0	0	0	0	0
Enhance	0	0	35	279	0	314
<b>Total</b>	<b>0</b>	<b>0</b>	<b>35</b>	<b>742</b>	<b>0</b>	<b>777</b>

### Total Requested Funding within each Ecological Section (Table 4)

Type	Metro/Urban	Forest/Prairie	SE Forest	Prairie	N. Forest	Total Funding
Restore	-	-	\$6,000	\$83,000	-	\$89,000
Protect in Fee with State PILT Liability	-	-	-	\$3,710,000	-	\$3,710,000
Protect in Fee w/o State PILT Liability	-	-	-	\$455,000	-	\$455,000
Protect in Easement	-	-	-	-	-	-
Enhance	-	-	\$416,000	\$1,730,000	-	\$2,146,000
<b>Total</b>	<b>-</b>	<b>-</b>	<b>\$422,000</b>	<b>\$5,978,000</b>	<b>-</b>	<b>\$6,400,000</b>

### Average Cost per Acre by Resource Type (Table 5)

Type	Wetland	Prairie	Forest	Habitat
Restore	\$7,666	-	\$6,600	-
Protect in Fee with State PILT Liability	\$9,306	\$9,250	\$9,250	\$9,306
Protect in Fee w/o State PILT Liability	\$9,120	-	-	\$9,080
Protect in Easement	-	-	-	-
Enhance	\$7,754	\$5,819	\$6,962	-

### Average Cost per Acre by Ecological Section (Table 6)

Type	Metro/Urban	Forest/Prairie	SE Forest	Prairie	N. Forest
Restore	-	-	-	\$6,384	-
Protect in Fee with State PILT Liability	-	-	-	\$9,275	-

Protect in Fee w/o State PILT Liability	-	-	-	\$9,100	-
Protect in Easement	-	-	-	-	-
Enhance	-	-	\$11,885	\$6,200	-

**Target Lake/Stream/River Feet or Miles**

2 miles

## Parcels

### Sign-up Criteria?

No

### Explain the process used to identify, prioritize, and select the parcels on your list:

The Trust for Public Land works with its public partners to identify and prioritize projects that meet their objectives and are on their priority lists. Criteria includes whether the land provides critical habitat for game and non-game species and quality public recreational opportunities, presence of unique plants and animals species (including SGCN), goals of conservation plans, adjacency to other public land or habitat complexes, existence of local support, immediacy of threats, landowner willingness and time frame.

Great River Greening works with land owning entities (public and protected private) and interested stakeholders to identify parcels where there is a need for restoration or enhancement of lands and water resources. Parcels are selected using the following criteria: permanently protected status (WMA, AMA, SNA, Forestry, County Conservation, etc.), ecological and habitat value and potential (biodiversity, size and location), congruence with existing plans and priority areas, willing and committed landowners (demonstrated through leveraged match), and leveraging opportunities.

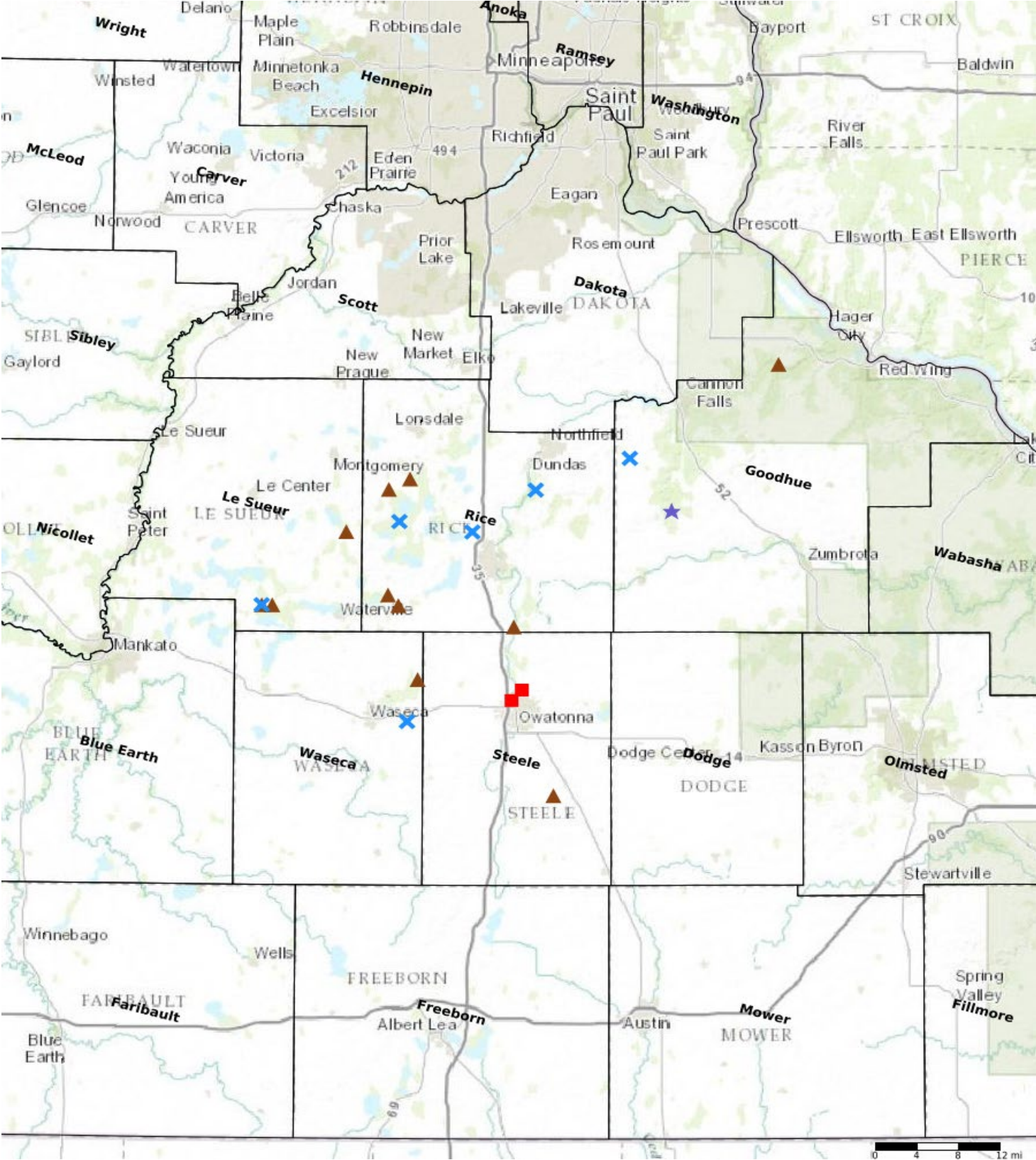
### Restore / Enhance Parcels

Name	County	TRDS	Acres	Est Cost	Existing Protection
Little Cannon River AMA	Goodhue	11018201	40	\$285,000	Yes
Warsaw WMA	Goodhue	11118208	37	\$221,000	Yes
Dove Lake WMA II	Le Sueur	10924221	83	\$478,000	Yes
Cannon River Wilderness Area	Rice	11120226	56	\$406,000	Yes
Sunktokeca WMA Ph III	Rice	11021214	19	\$118,000	Yes
Boyd Sartell WMA	Rice	11022210	24	\$221,000	Yes
Goose Lake Park	Waseca	10722214	61	\$343,000	Yes

### Protect Parcels

Name	County	TRDS	Acres	Est Cost	Existing Protection
Cannon River Turtle Preserve SNA II	Goodhue	11316227	200	\$615,000	No
Earl Swain WMA	Le Sueur	10924222	75	\$450,000	No
Dora Lake WMA	Le Sueur	11023214	172	\$650,000	No
Dove Lake WMA	Le Sueur	10924221	66	\$290,000	No
Sakatah WMA	Rice	10922216	80	\$210,000	No
Faribault WMA II	Rice	10920233	37	\$185,000	No
Sakatah WMA Addition II	Rice	10922222	62	\$589,000	No
Gray Fox WMA II	Rice	11122228	79	\$200,000	No
Big Woods Heritage Forest WMA II	Rice	11122223	227	\$950,000	No
Straight River WMA II	Steele	10720204	53	\$556,000	No
Straight River WMA I	Steele	10820234	58	\$200,000	No
Aurora WMA Addition 2	Steele	10619219	50	\$230,000	No
Moonan Marsh WMA	Waseca	10822225	75	\$316,000	No

Parcel Map



- Protect in Easement
- ▲ Protect in Fee with PILT
- Protect in Fee W/O PILT
- ★ Restore
- ✕ Enhance
- ⊕ Other



# CANNON RIVER WATERSHED

## HABITAT PROTECTION AND RESTORATION PROGRAM - PHASE 13

### ABOUT THE PROGRAM

The goals of this program are to protect existing high-quality habitat, restore degraded habitat, prevent degradation of water quality, and provide public access to lands within the Cannon River Watershed.

Over the next 3 to 5 years, this request will permanently protect approximately 450 acres and restore or enhance approximately 327 acres of high priority wildlife habitat, creating new public accesses within an hour drive for more than half of all Minnesotans.



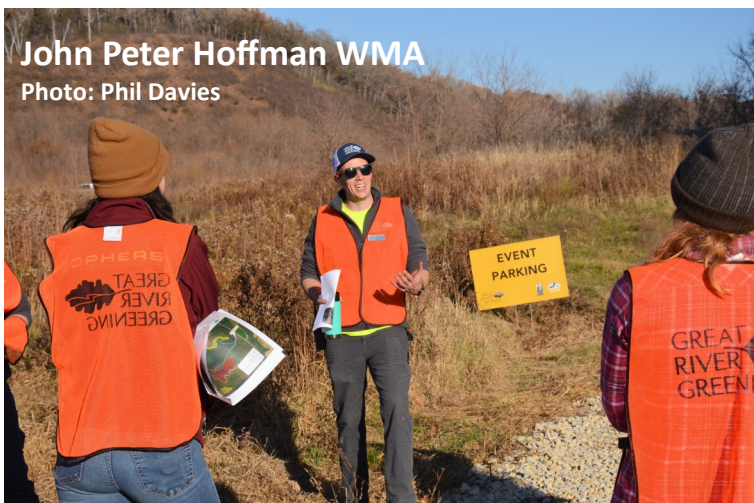
Cannon River  
Turtle Preserve SNA

Photo: Andy Richter



Little Cannon River  
AMA

Photo: Andy Richter



John Peter Hoffman WMA

Photo: Phil Davies

### HERITAGE FUND REQUEST

\$6,400,000 in order to  
protect 450 acres  
restore or enhance 327 acres

### CANNON RIVER WATERSHED

Located south of the Twin Cities, the 1,460 sq. mile watershed includes over 800 linear miles of streams and rivers that drain a diverse landscape. Historically comprised of Big Woods, prairie and wetland habitat, the landscape is now dominated by agricultural fields and, to a lesser extent, development.

**Today, only 18% of the landscape remains as forest, wetland or prairie habitat and many of these areas have been degraded.** High quality habitat in the Cannon River Watershed continues to be degraded by invasive species or converted to rural residential development and to agricultural production.

Protection, restoration, and enhancement of high quality habitat are important for maintaining what remains of the region's unimpaired waters and increasingly vital habitat needs.

# A team with proven results



**Clean River Partners will administer and coordinate the program and conduct landowner outreach.** CRP is a member-based nonprofit organization that inspires people and organizations to value, protect, and improve the Cannon River Watershed's land and water.

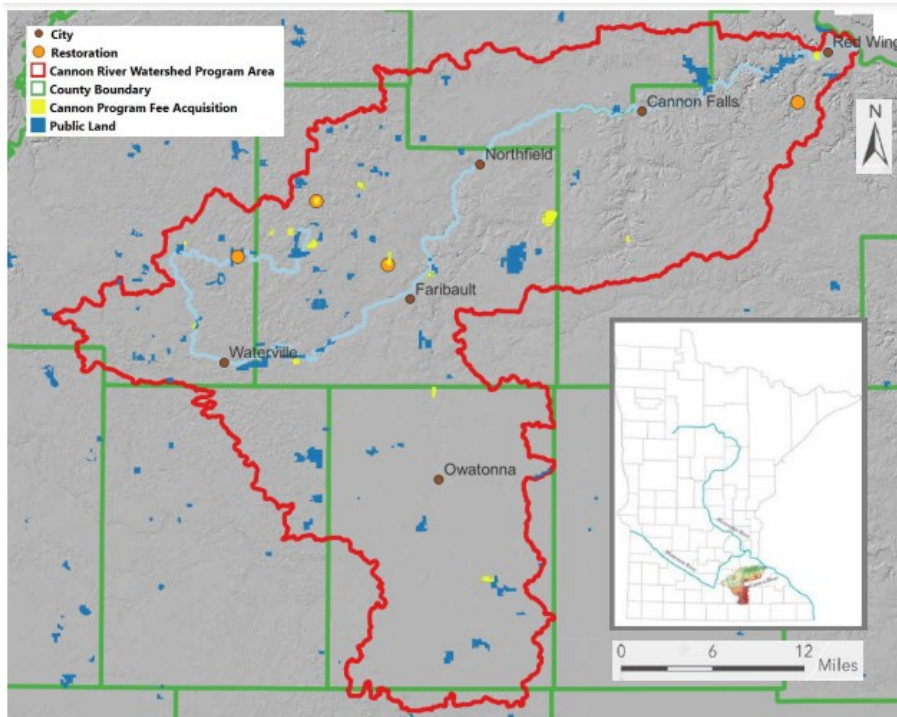


**The Trust for Public Land will be responsible for protecting land in fee.** TPL works to protect land and create parks for people, ensuring healthy, livable communities for generations to come. Since 1986, The Trust for Public Land has protected over 170 special places throughout the State of Minnesota totaling over 100,000 acres.



**Great River Greening will be responsible for restoring and enhancing habitat.** GRG has worked for more than 25 years restoring land and water resources throughout Minnesota. With the help of local volunteers, GRG has restored degraded forests and prairies and improved our outdoor recreation experiences, our economy and our drinking water.

These protected and restored places now provide valued habitat for a wide variety of wildlife, offering quality hunting opportunities for waterfowl, deer, pheasant, and turkeys, and trout fishing within an hour's drive for 3.4 million Minnesotans.



## ACCOMPLISHMENTS

- Created 7 new Wildlife Management Areas (WMAs), 1 new Aquatic Management Area and expanded 8 WMAs
- Expanded Cannon River Turtle Preserve Scientific and Natural Area by 25%
- 2,983 acres have been permanently protected and are now publicly accessible
- 337 acres of habitat have been restored or enhanced across four WMAs and a county park

For more information about this proposal, please contact Jennifer Tonko, Clean River Partners Executive Director, at 507-786-3913 x 1 or [jennifer@cleanriverpartners.org](mailto:jennifer@cleanriverpartners.org)





May 1, 2023

Lessard-Sams Outdoor Heritage Council  
100 Rev. Dr. Martin Luther King Jr. Blvd  
State Office Building, Room 95  
Saint Paul, MN 55155

RE: Letter of Support – Cannon River Watershed Habitat Protection and Restoration Phase 11,

This letter is to serve as our support for Great River Greening, as a member of the Cannon River Watershed Habitat Protection and Restoration Program, as they seek funding through the Lessard-Sams Outdoor Heritage Fund as created by the Clean Water, Land and Legacy Amendment for the implementation of habitat restoration, protection, and enhancement of the native ecosystems of Minnesota, in addition to expanding access of those resources to the communities in which they are located.

We support this request for assistance on the Cannon River Watershed Phase 11 proposal as it will expand the environmentally conscious opportunities for land management and natural resource preservation. We also support Great River Greening's efforts to demonstrate the conservation and stewardship that everyday individuals can participate in these public projects, as well as gain understanding of practices outlined within the Minnesota Conservation and Preservation Plan that will continue to maintain the quality of Minnesota's natural areas.

Great River Greening's effort to inspire and lead local communities in restoring and conserving the land and water that enrich our lives will be exemplified through the work outlined in this proposal, and our organization would like to partner with that effort.

Sincerely,

Waseca County Parks

Brian Tomford

A handwritten signature in black ink, appearing to read "Brian Tomford", is placed to the right of the printed name.

Facilities Director