



Lessard-Sams Outdoor Heritage Council

Pine and Leech Watershed Phase III Targeted RIM Easement Permeant Land Protection
ML 2024 Request for Funding

General Information

Date: 06/26/2023

Proposal Title: Pine and Leech Watershed Phase III Targeted RIM Easement Permeant Land Protection

Funds Requested: \$2,920,000

Confirmed Leverage Funds: -

Is this proposal Scalable?: Yes

Manager Information

Manager's Name: Melissa Barrick

Title: District Manager

Organization: Crow Wing Soil and Water Conservation District

Address: 322 Laurel St Ste 22

City: Brainerd, MN 56401

Email: melissa@cswcd.org

Office Number: 2188286197

Mobile Number:

Fax Number:

Website: www.cswcd.org

Location Information

County Location(s):

Eco regions in which work will take place:

- Northern Forest

Activity types:

- Protect in Easement

Priority resources addressed by activity:

- Wetlands
- Forest
- Habitat

Narrative

Abstract

We will partner with the BWSR RIM Easement Program, Hubbard, Crow Wing, and Cass Counties and Soil and Water Conservation Districts (SWCD) to protect 750 acres of high-quality private forest, wetlands, and shoreline in the Northern Forest Ecological Section. This project will be successful because of the sophisticated RAQ scoring, integrative parcel selection, proven outreach tactics, SWCD landowner relationships, and BWSR and SWCD RIM partnership. Development trends seriously threaten Cisco, Golden-winged Warbler, Northern Long-eared Bat, Blanding's Turtles, and over 107 unique, rare, endangered, and threatened species that live in these watersheds' uplands, lowlands, and mature forests.

Design and Scope of Work

This project will build the success of the 2020 and 2021 Lessard Sam's Outdoor Heritage Council (LSOHC) Grant with the Reinvest in Minnesota (RIM) easements on targeted private forests, wetlands, and shorelines within the Leech Lake and Pine River Major Watersheds (hydrologic unit codes 07010102 and 7010105). The additional funds will help us meet the watershed protection goals.

These watersheds contain:

- 1,250 lakes, which cover 354 square miles same size city of Fort Worth, Texas.
- 88 lakes with High to Highest Outstanding Biological Significance (Minnesota Department of Natural Resources (MN DNR)).
- 92 wild rice lakes.
- 29 Cisco lakes.

In 2019, the MN DNR, Board of Water and Soil Resources (BWSR), and Technical Service Area 8 developed a protection framework based on MN DNR Fisheries Cisco research. The MN DNR identified a strong correlation between lake water quality and habitat that sustains fish populations and maintains 75 percent forest cover in the watershed. The Leech Lake and Pine River Landscape Stewardship Plans (LSP) determined existing protection levels in each 144 minor watersheds and the number of acres needed to achieve the 75 percent protection goal. The Leech and Pine River Comprehensive Watershed Plans (CWP) adopted the 75 percent protection goal and pinpointed private woodlands as essential to preserving. The CWPs identified issues and concerns and developed a targeted and measurable 10-year implementation plan. Both plans recognized conservation easements as a critical tool for protecting priority groundwater, habitat, and surface water. The team developed a methodology for targeting specific large-tract private forested parcels. The process is called RAQ (Riparian, Adjacent, Quality); each parcel is scored on a 0-9 scale:

Riparian: parcel on the river or lake.

Adjacency: to protected lands, i.e., county, state, or federal land.

Quality: Wild Rice, Cisco, and biodiversity.

The most significant risk for development and fragmentation is riparian private forest lands. The RAQ tool prioritizes private parcels adjacent to state or federal lands (protected lands in the model). This will create extensive long-lasting habitat complexes. The LSPs calculated private ownership as 49 percent and 28 percent, respectively. Over 320,000 high-quality private forest acres (over 20 acres in size) have no protection status within these watersheds. The LSPs and CWPs selected Headwaters, Whitefish Lake, Lower Pine, Little Pine River, Woman Lake, Steamboat River, and Kabekona River (7 of 12 minor Watersheds) for habitat protection. The staff will use RAQ scores to filter 320,000 to 2,280 acres within the minor watersheds.

The LSPs calculated that property values surrounding these high-quality waterbodies are worth over 10 billion dollars. The Pine River and Leech Watersheds have some of the highest-quality lakes and fisheries within the lower 48 States. The tourism industries within Hubbard, Cass, and Crow Wing Counties generate over \$421 million in

yearly sales (Explore Minnesota 2019). The private lands within these watersheds deserve protection strategies. This project will implement 15 RIM easements to ensure the habitat stays intact and protect the Leech Lake and Pine River Watersheds' local tourism economy and tax base.

Explain how the proposal addresses habitat protection, restoration, and/or enhancement for fish, game & wildlife, including threatened or endangered species conservation

The MN DNR rare species guide indicated that Leech and Pine River Watersheds contain over 108 rare species of fish, invertebrates, plants, reptiles, and mammals. These species depend on the fringe wetlands, forested corridors, high-quality lakes, and shoreland vegetative habitats.

Blanding's Turtles need both upland and wetlands to complete their life cycle. This habitat includes calm shallow water bodies (type 1-3 wetlands), essential amphibian and invertebrate breeding grounds, and food sources for the Blanding's Turtle. The turtles nest on undeveloped land in open grassy or brushy sand.

Wild rice provides some of Minnesota's most important habitats for migrating and breeding waterfowl. More than 17 species of Species of Greatest Conservation Need (SGCN) use wild rice areas as habitats for breeding, migration, and foraging. They include Common Loon, Trumpeter Swan, Bald Eagle, American Bittern, Least Bittern, Red-necked Grebe, Sora Rail, Virginia Rail, Yellow Rail, Black Tern, Rusty Blackbird, Sedge Wren, Lesser Scaup, Northern Pintail, American Black Duck. Wild Rice grows in shallow lakes, rivers, and shallow bays of deeper lakes.

The Northern Long-eared Bat was recently added to the federal threatened species list because of the lack of roosts. The MN DNR and US Fish and Wildlife Service identified over 11 townships in Cass, Crow Wing, and Hubbard Counties that contain mature roost trees for the Northern Long-eared Bat. Approximately 230 mature roost trees were identified in Minnesota. An estimated 30 percent of the trees were placed in Hubbard, Cass, and Crow Wing Counties.

The MN DNR identified the Golden-winged Warbler as an SGCN due to a population that has declined by 60 percent across the United States and Canada. Minnesota's critical upland, lowland, and mature forest habitats support over 47 percent of the species' global population. This bird is a Minnesota icon and symbol of private land stewardship. These unprotected remote forests and upland habitats are a mecca for all these species. This project will protect these crucial habitats.

What are the elements of this proposal that are critical from a timing perspective?

The 2020 US Census data indicate that over 3.8 million people live in Twin Cities and Fargo. These people are two hours or less from Pine and Leech Watersheds. According to the Minnesota State Demographic Center, from 1990-2021, Cass, Hubbard, and Crow Wing Counties' populations increased by 144 percent (an average of 590 people per year). Family-owned cabins are transforming into lake homes. The cabin footprint increased by 479 percent (700 to 3,350 square feet, WI DNR Study). Vegetative buffers have been converted to manicured lawns re-contoured towards the lake. These changes significantly impact bird nesting, fish spawning, frogs, rare and endangered species, forest health, and water quality. The cost will increase, and opportunities will be less if we wait to protect these critical habitats. This program seeks to protect these sensitive areas before they are lost.

Describe how the proposal expands habitat corridors or complexes and/or addresses habitat fragmentation:

This project will utilize LSPs and CWP minor watersheds science-based targeting to expand important habitat corridors and complexes on private lands. The RAQ Tool will score individual private, forested parcels in the

following manner:

- Riparian is whether the parcel is next to a priority water resource (1-3 points).
- Adjacency is whether it is next to existing state, county, or federal land (1-3 points)
- Quality is the locally determined value of the land (1-3 Points), i.e., trout/cisco lakes, wild rice, old-growth forests, MN DNR phosphorus sensitivity, rare species, biodiversity, and groundwater recharge and sensitive areas. The LSPs provided: 62,000 RAQ scores for all private parcels, RAQ score maps, databases, landowner outreach tables, percent of protected land, rare and unique species, species of concern, cisco and wild rice, and easement acre goal for each subwatershed. This data targets RIM easements to the parcel level, allowing us to hand-select the best parcels for habitat value and prevent future fragmentation in the entire watershed. This methodology is proven through Environmental Natural Resource Trust Fund and Clean Water Fund RIM easement program. The local government units will utilize LSPs to complete the following items:

Step 1: Filter the outreach database to find parcel RAQ scores 7-9 within a prioritized HUC 10 sub-watersheds adjacent to selected high-quality lakes.

Step 2: Review selected parcels and scores.

Step 3: Develop individual maps for each landowner with the specific easement boundary and price associated with the easement.

Step 4: Mail information on the RIM easement program and map to selected landowners.

Step 5: Rank and score RIM applications with an internal scoring sheet.

Step 6: Host an interagency committee meeting to review all applications.

Step 7: Begin the RIM easement application process with BWSR.

The Crow Wing SWCD has utilized this process and has protected over 23 miles of shoreline and 2,800 acres of habitat.

Which Conservation Plans referenced in MS97A.056, subd. 3a are most applicable to this project?

- Minnesota Forest Resource Council Landscape Plans
- National Fish Habitat Action Plan

Explain how this proposal will uniquely address habitat resilience to climate change and its anticipated effects on game, fish & wildlife species utilizing the protected or restored/enhanced habitat this proposal targets.

Of the 750 acres protected, 60 to 70 percent is high-quality forest land. According to the i-tree canopy calculation tool (developed by the US Forest Service), priority subwatershed ranges from 30-40 percent tree canopy (<https://ourtrees.itreetools.org/>). The 487 acres of forestland will sequester over 331 tons of carbon per year. The 487 acres of forest land will reduce 211,575 gallons per year of runoff to a nearby lake or river. The 487 forest acres will intercept 30 million gallons of water per year. For decades, research has pointed to the diverse forest as the number one way to mitigate climate change effects. The MN DNR Fisheries research identified the importance of 75 percent forest cover to help sustains cisco fish populations with climate change into the future. This project will help permanently protect high-quality, diverse forests and ensure the forest stays for generations to come.

Which LSOHC section priorities are addressed in this proposal?

Northern Forest

- Protect shoreland and restore or enhance critical habitat on wild rice lakes, shallow lakes, cold water lakes, streams and rivers, and spawning areas

Describe how this project/program will produce and demonstrate a significant and permanent conservation legacy and/or outcomes for fish, game, and wildlife, and if not permanent outcomes, why it is important to undertake at this time:

This project will directly implement priority actions for the Northern Forest Section which include:

- Forestlands are protected from development and fragmentation
- Increased availability and improved condition of riparian forest and other habitat corridors
- Lakes and wetlands support health fish populations
- Lakes and streams with protected shoreland and forestland will produce quality warm and cold-water aquatic systems.
- Protect shallow and critical wild rice habitat

Outcomes

Programs in the northern forest region:

- Forestlands are protected from development and fragmentation ~ *This project will measure the number acres of forestland, wetlands, and habitat enrolled into RIM easements. We also will measure the number of miles of shoreline protected and the individual minor watershed 1W1P plan percent protection goal. The other evaluation will include scoring sheet for each conservation easement, public meeting evaluation forms, and anecdotal information from landowners on species on their land, habitat value, and might also include cultural resource protection. This project will employ lessons learned from past easement program which include: excellent communication, direct and correct landowner responsibility information, maps, standard payment rate, direct mailing, and partnering meeting.*

What other dedicated funds may collaborate with or contribute to this proposal?

- Clean Water Fund

Per MS 97A.056, Subd. 24, Please explain whether the request is supplanting or is a substitution for any previous funding that was not from a legacy fund and was used for the same purpose.

This funding request is not supplanting existing funding or a substitution for any previous funding.

How will you sustain and/or maintain this work after the Outdoor Heritage Funds are expended?

Once a RIM easement is acquired, BWSR is responsible for monitoring and enforcement into perpetuity. BWSR partners with local SWCDs to oversee, monitor, and inspect its conservation easements. Easements are inspected for the first five consecutive years beginning in the year after the easement is recorded. After that, on-site inspections are performed every three years, and compliance checks are performed in the other two years. SWCDs report to BWSR on each site inspection, and partners’ staff document findings. A non-compliance procedure is implemented when potential violations or problems are identified.

Perpetual monitoring and enforcement costs have been calculated at \$6,500 per easement. This value is based on using local SWCD staff to monitor easements and existing enforcement authorities. The amount listed for Easement Stewardship covers the SWCD regular monitoring costs, BWSR oversight, and any necessary enforcement.

Actions to Maintain Project Outcomes

Year	Source of Funds	Step 1	Step 2	Step 3
2023 beyond	RIM Stewardship Fees	Monitoring	Enforcement as necessary	-

Provide an assessment of how your program may celebrate cultural diversity or reach diverse communities in Minnesota, including reaching low- and moderate-income households:

The Leech Lake Band of Ojibwe tribal land contains 45 percent of the Leech Lake River Watershed area (387,132 acres). Hubbard and Cass Counties have great relationships with the Leech Lake Band of Ojibwe. The SWCD staff meets with the tribal leaders and communicates regularly with the division of resources management. Through the BWSR One Watershed One Plan program, the SWCDs, counties, and Leech Lake Band of Ojibwe have worked together to have a better understanding of each other roles within the watershed. We will keep the contacts and connections updated on this project. Wild rice, or manoomin (good seed) in Ojibwe, is reserved as a special gift from the Creator. The MN DNR indicated that hydrology changes, water-based recreation, and shoreline development impact the plant and its reproduction ability (MN DNR 2008 Legislative Report). On September 20, 2022, the Associated Press released an article titled “Minnesota Ojibwe harvest sacred, Climate-Imperiled Wild Rice”. The article discusses the connection of wild rice to their community and its importance to future generations (see link below). This project will also protect the existing wild rice on lakes and rivers within the Pine and Leech. Wild Rice is one of the quality factors in the RAQ score. All the Pine and Leech River Watershed lands are part of the 1855 Land Cession Treaty Area. According to a Leech Lake News article titled “On This Day: 1855 Treaty Signed between United States and Ojibwe Bands”, the 1837 and 1854 Treaties included stipulations that the Ojibwe would retain their hunting and fishing rights in the ceded territory. This project will benefit the 1855 Treaty area by maintaining wild rice and protecting fisheries, land, and aquatic habitat that are important for hunting and fishing (See attachments for 1855 Treaty Area).

Website Citations:

<https://www.leechlakenews.com/2018/02/22/day-1855-treaty-signed-united-states-ojibwe-bands/>
https://files.dnr.state.mn.us/fish_wildlife/wildlife/wildrice/natural-wild-rice-in-minnesota.pdf (pages 1 and 2)
<https://apnews.com/article/religion-minnesota-lakes-6caa0dd5f0842d922841cea34708e2f3>

Activity Details

Requirements

If funded, this proposal will meet all applicable criteria set forth in MS 97A.056?

Yes

Is the land you plan to acquire (easement) free of any other permanent protection?

Yes

Land Use

Will there be planting of any crop on OHF land purchased or restored in this program?

No

Will neonicotinoid pesticide products be used within any activities of this proposal?

No

Will the eased land be open for public use?

No

Are there currently trails or roads on any of the proposed acquisitions?

Yes

Describe the types of trails or roads and the allowable uses:

This appropriation is funding a program that will have a parcel list identified later. Roads or trails are typically excluded from the easement area if they serve no beneficial purpose to easement maintenance, monitoring, or enforcement. Existing trails and roads are identified during the easement process. Some roads and trails, such as agricultural field accesses and forestry roads for forest management, can remain.

Will the trails or roads remain and uses continue to be allowed after OHF acquisition?

Yes

How will maintenance and monitoring be accomplished?

The easements secured under this project will be managed as part of the BWSR RIM Reserve Program, with 7,500 easements currently in place. Easements are monitored annually for the first five years and every 3rd year after that. BWSR, in cooperation with SWCD, implements a stewardship process to track, monitor quality and assure compliance with easement terms.

Under the terms of the RIM Easement Program, landowners are required to maintain compliance with the easement. A conservation plan is developed with the landowner and maintained as part of each easement. Basic easement compliance costs are borne by the landowner, and periodic enhancements may be cost-shared from a variety of sources.

Will new trails or roads be developed or improved as a result of the OHF acquisition?

Yes

Describe the types of trails or roads and the allowable uses:

Though uncommon, there could be a potential for new minimal use trails, if they contribute to easement maintenance or benefit the easement site (e.g. firebreaks, berm maintenance, etc). Unauthorized trails identified during the monitoring process are in violation of the easement.

How will maintenance and monitoring be accomplished?

The easements secured under this project will be managed as part of the BWSR RIM Reserve Program which has over 7,500 easements currently in place. Easements are monitored annually for each of the first five years and then every 3rd year after that. BWSR, in cooperation with SWCD, implements a stewardship process to track, monitor quality and assure compliance with easement terms.

Under the terms of the RIM Easement Program, landowners are required to maintain compliance with the easement. A conservation plan is developed with the landowner and maintained as part of each easement. Basic easement compliance costs are borne by the landowner; periodic enhancements may be cost-shared from a variety of sources.

Will the land that you acquire (fee or easement) be restored or enhanced within this proposal's funding and availability?

No

Explain how, when, and source of the R/E work:

Suppose the landowner would like to do some enhancements to their property. We would encourage the landowner to complete a forest stewardship plan. Once the landowner has a forest stewardship plan, the

SWCD would work with the landowner to develop a project plan for their property. The SWCD has cost-share funds available to assist with conservation projects.

Other OHF Appropriation Awards

Have you received OHF dollars in the past through LSOHC that are current OPEN appropriations?

Yes

Approp Year	Funding Amount Received	Amount Spent to Date	Funding Remaining	% Spent to Date
2021	\$1,065,000	\$904,249	\$160,751	84.91%
2020	\$2,458,000	\$838,375	\$1,619,625	34.11%
2019	\$1,246,000	\$1,103,700	\$142,300	88.58%
Totals	\$4,769,000	\$2,846,324	\$1,922,676	59.68%

Timeline

Activity Name	Estimated Completion Date
Rank Score Applications/Interagency Team Meetings.	January-March 2025
Outreach and Mailing for specific parcels.	September 2024
Work with BWSR and Landowner to complete RIM easements.	January 2025-2026
Prioritize RAQ scores 7-9 within a specific HUC 10 subwatershed adjacent to selected high-quality lakes.	August 2024
Completed required reporting for LSOHC.	Semiannual basis

Budget

Grand Totals Across All Partnerships

Item	Funding Request	Total Leverage	Leverage Source	Total
Personnel	\$313,000	-	-	\$313,000
Contracts	\$37,500	-	-	\$37,500
Fee Acquisition w/ PILT	-	-	-	-
Fee Acquisition w/o PILT	-	-	-	-
Easement Acquisition	\$2,337,900	-	-	\$2,337,900
Easement Stewardship	\$150,000	-	-	\$150,000
Travel	\$6,700	-	-	\$6,700
Professional Services	-	-	-	-
Direct Support Services	\$58,100	-	-	\$58,100
DNR Land Acquisition Costs	-	-	-	-
Capital Equipment	-	-	-	-
Other Equipment/Tools	\$6,800	-	-	\$6,800
Supplies/Materials	\$10,000	-	-	\$10,000
DNR IDP	-	-	-	-
Grand Total	\$2,920,000	-	-	\$2,920,000

Partner: SWCD

Totals

Item	Funding Request	Total Leverage	Leverage Source	Total
Personnel	\$190,000	-	-	\$190,000
Contracts	-	-	-	-
Fee Acquisition w/ PILT	-	-	-	-
Fee Acquisition w/o PILT	-	-	-	-
Easement Acquisition	-	-	-	-
Easement Stewardship	-	-	-	-
Travel	\$2,000	-	-	\$2,000
Professional Services	-	-	-	-
Direct Support Services	\$20,000	-	-	\$20,000
DNR Land Acquisition Costs	-	-	-	-
Capital Equipment	-	-	-	-
Other Equipment/Tools	-	-	-	-
Supplies/Materials	\$8,000	-	-	\$8,000
DNR IDP	-	-	-	-
Grand Total	\$220,000	-	-	\$220,000

Personnel

Position	Annual FTE	Years Working	Funding Request	Total Leverage	Leverage Source	Total
Outreach to Landowners	0.65	3.0	\$150,000	-	-	\$150,000
Administrative	0.1	4.0	\$40,000	-	-	\$40,000

Partner: BWSR

Totals

Item	Funding Request	Total Leverage	Leverage Source	Total
Personnel	\$123,000	-	-	\$123,000
Contracts	\$37,500	-	-	\$37,500
Fee Acquisition w/ PILT	-	-	-	-
Fee Acquisition w/o PILT	-	-	-	-
Easement Acquisition	\$2,337,900	-	-	\$2,337,900
Easement Stewardship	\$150,000	-	-	\$150,000
Travel	\$4,700	-	-	\$4,700
Professional Services	-	-	-	-
Direct Support Services	\$38,100	-	-	\$38,100
DNR Land Acquisition Costs	-	-	-	-
Capital Equipment	-	-	-	-
Other Equipment/Tools	\$6,800	-	-	\$6,800
Supplies/Materials	\$2,000	-	-	\$2,000
DNR IDP	-	-	-	-
Grand Total	\$2,700,000	-	-	\$2,700,000

Personnel

Position	Annual FTE	Years Working	Funding Request	Total Leverage	Leverage Source	Total
Program Management	0.35	4.0	\$123,000	-	-	\$123,000

Amount of Request: \$2,920,000

Amount of Leverage: -

Leverage as a percent of the Request: 0.0%

DSS + Personnel: \$371,100

As a % of the total request: 12.71%

Easement Stewardship: \$150,000

As a % of the Easement Acquisition: 6.42%

Does this proposal have the ability to be scalable?

Yes

If the project received 50% of the requested funding

Describe how the scaling would affect acres/activities and if not proportionately reduced, why?

Yes, this project is scalable. If we receive less funding, we will reduce the number of easements and the number of acres protected.

Describe how personnel and DSS expenses would be adjusted and if not proportionately reduced, why?

Staff time will be reduced, but staff time is needed to implement the program so that some costs will

remain the same within the partnership. The DDS expense is based on the amount of the EFT. If the EFT is reduced, the DDS will be reduced as well.

If the project received 30% of the requested funding

Describe how the scaling would affect acres/activities and if not proportionately reduced, why?

A thirty percent funding request would reduce our acre goal to 225 acres and approximately five easements.

Describe how personnel and DSS expenses would be adjusted and if not proportionately reduced, why?

Staff time would be reduced at a different ratio. Doing outreach and completing the RIM Easement process takes much time. We would base the staff time on the number of easements and estimated time to complete the work.

Personnel

Has funding for these positions been requested in the past?

No

Contracts

What is included in the contracts line?

The contract line includes costs covered under the SWCD MJPA, \$2,500 for staff time per easement acquisition.

Easement Stewardship

What is the number of easements anticipated, cost per easement for stewardship, and explain how that amount is calculated?

Perpetual monitoring and enforcement costs have been calculated at \$10,000 per easement. This value is based on using local SWCD staff to monitor landowner relations and existing enforcement authorities. The amount listed for Easement Stewardship covers the SWCD regular monitoring costs, BWSR oversight, and any necessary enforcement.

Travel

Does the amount in the travel line include equipment/vehicle rental?

No

Explain the amount in the travel line outside of traditional travel costs of mileage, food, and lodging

The travel line will only be used for traditional travel costs for mileage and food.

I understand and agree that lodging, meals, and mileage must comply with the current MMB Commissioner Plan:

Yes

Direct Support Services

How did you determine which portions of the Direct Support Services of your shared support services is direct to this program?

BWSR calculates direct support services costs that are directly related to and necessary for each request based on the type of work being done.

Other Equipment/Tools

Give examples of the types of Equipment and Tools that will be purchased?

Signs and stakes to stake the easement boundaries. Other tools are needed to complete the easement work.

Federal Funds

Do you anticipate federal funds as a match for this program?

Yes

Are the funds confirmed?

Yes

- Other : EPA Small Watershed Funds to help landowners enroll into the SFIA state run 50 year covenant to help reach the Watershed Goals.

Is Confirmation Document attached?

[Yes](#)

Output Tables

Acres by Resource Type (Table 1)

Type	Wetland	Prairie	Forest	Habitat	Total Acres
Restore	0	0	0	0	0
Protect in Fee with State PILT Liability	0	0	0	0	0
Protect in Fee w/o State PILT Liability	0	0	0	0	0
Protect in Easement	150	0	300	300	750
Enhance	0	0	0	0	0
Total	150	0	300	300	750

Total Requested Funding by Resource Type (Table 2)

Type	Wetland	Prairie	Forest	Habitat	Total Funding
Restore	-	-	-	-	-
Protect in Fee with State PILT Liability	-	-	-	-	-
Protect in Fee w/o State PILT Liability	-	-	-	-	-
Protect in Easement	\$584,000	-	\$1,168,000	\$1,168,000	\$2,920,000
Enhance	-	-	-	-	-
Total	\$584,000	-	\$1,168,000	\$1,168,000	\$2,920,000

Acres within each Ecological Section (Table 3)

Type	Metro/Urban	Forest/Prairie	SE Forest	Prairie	N. Forest	Total Acres
Restore	0	0	0	0	0	0
Protect in Fee with State PILT Liability	0	0	0	0	0	0
Protect in Fee w/o State PILT Liability	0	0	0	0	0	0
Protect in Easement	0	0	0	0	750	750
Enhance	0	0	0	0	0	0
Total	0	0	0	0	750	750

Total Requested Funding within each Ecological Section (Table 4)

Type	Metro/Urban	Forest/Prairie	SE Forest	Prairie	N. Forest	Total Funding
Restore	-	-	-	-	-	-
Protect in Fee with State PILT Liability	-	-	-	-	-	-
Protect in Fee w/o State PILT Liability	-	-	-	-	-	-
Protect in Easement	-	-	-	-	\$2,920,000	\$2,920,000
Enhance	-	-	-	-	-	-
Total	-	-	-	-	\$2,920,000	\$2,920,000

Average Cost per Acre by Resource Type (Table 5)

Type	Wetland	Prairie	Forest	Habitat
Restore	-	-	-	-
Protect in Fee with State PILT Liability	-	-	-	-
Protect in Fee w/o State PILT Liability	-	-	-	-
Protect in Easement	\$3,893	-	\$3,893	\$3,893
Enhance	-	-	-	-

Average Cost per Acre by Ecological Section (Table 6)

Type	Metro/Urban	Forest/Prairie	SE Forest	Prairie	N. Forest
Restore	-	-	-	-	-
Protect in Fee with State PILT Liability	-	-	-	-	-

Protect in Fee w/o State PILT Liability	-	-	-	-	-
Protect in Easement	-	-	-	-	\$3,893
Enhance	-	-	-	-	-

Target Lake/Stream/River Feet or Miles

2

Parcels

Sign-up Criteria?

[Yes - Sign up criteria is attached](#)

Explain the process used to identify, prioritize, and select the parcels on your list:

The LSPs provided: 62,000 RAQ scores for all private parcels, RAQ score maps, databases, landowner outreach tables, percent of protected land, rare and unique species, species of concern, cisco and wild rice, and easement acre goal for each subwatershed. The local government units will utilize LSPs and CWPs to complete the following items:

Step 1: Filter the outreach database to find parcel RAQ scores 7-9 within a prioritized HUC 10 sub-watersheds adjacent to selected high-quality lakes.

Step 2: Review selected parcels and scores.

Step 3: Develop individual maps for each landowner with the specific easement boundary and price associated with the easement.

Step 4: Mail information on the RIM easement program and map to selected landowners.

Step 5: Rank and score RIM applications with an internal scoring sheet.

Step 6: Host an interagency committee meeting to review all applications.

Step 7: Begin the RIM easement application process with BWSR.

Pine-Leech Watersheds

71

Beltrami County

Itasca

Bemidji

Cass Lake

Bena

2

Federal Dam

Cass County

Laporte

Hubbard County

Walker

Remer

MINNESOTA
200

Longville

Hackensack

MINNESOTA
84

Aitkin County

MINNESOTA
87

Backus

MINNESOTA
6

Emily

Pine River

MINNESOTA
371

Crosslake

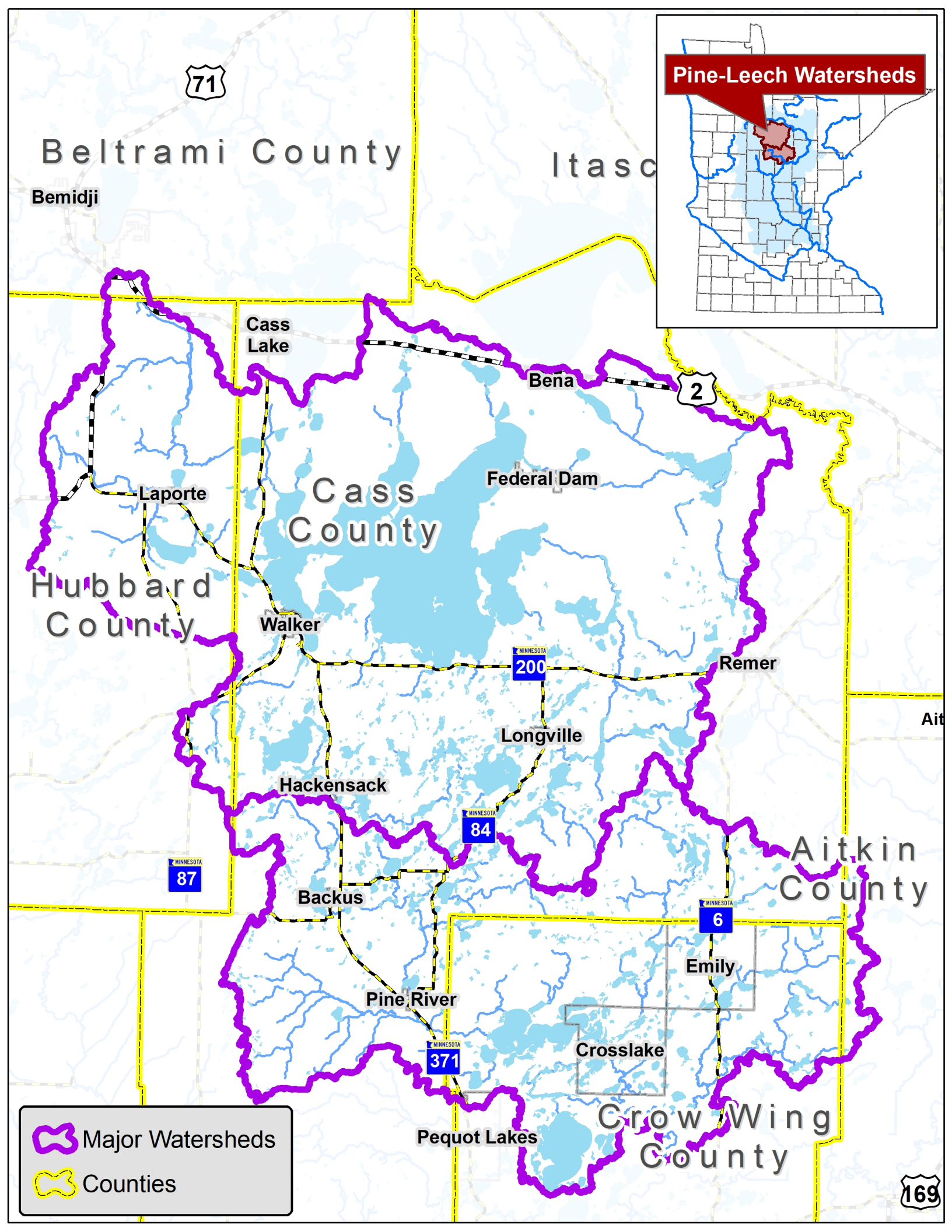
Crow Wing County

Pequot Lakes

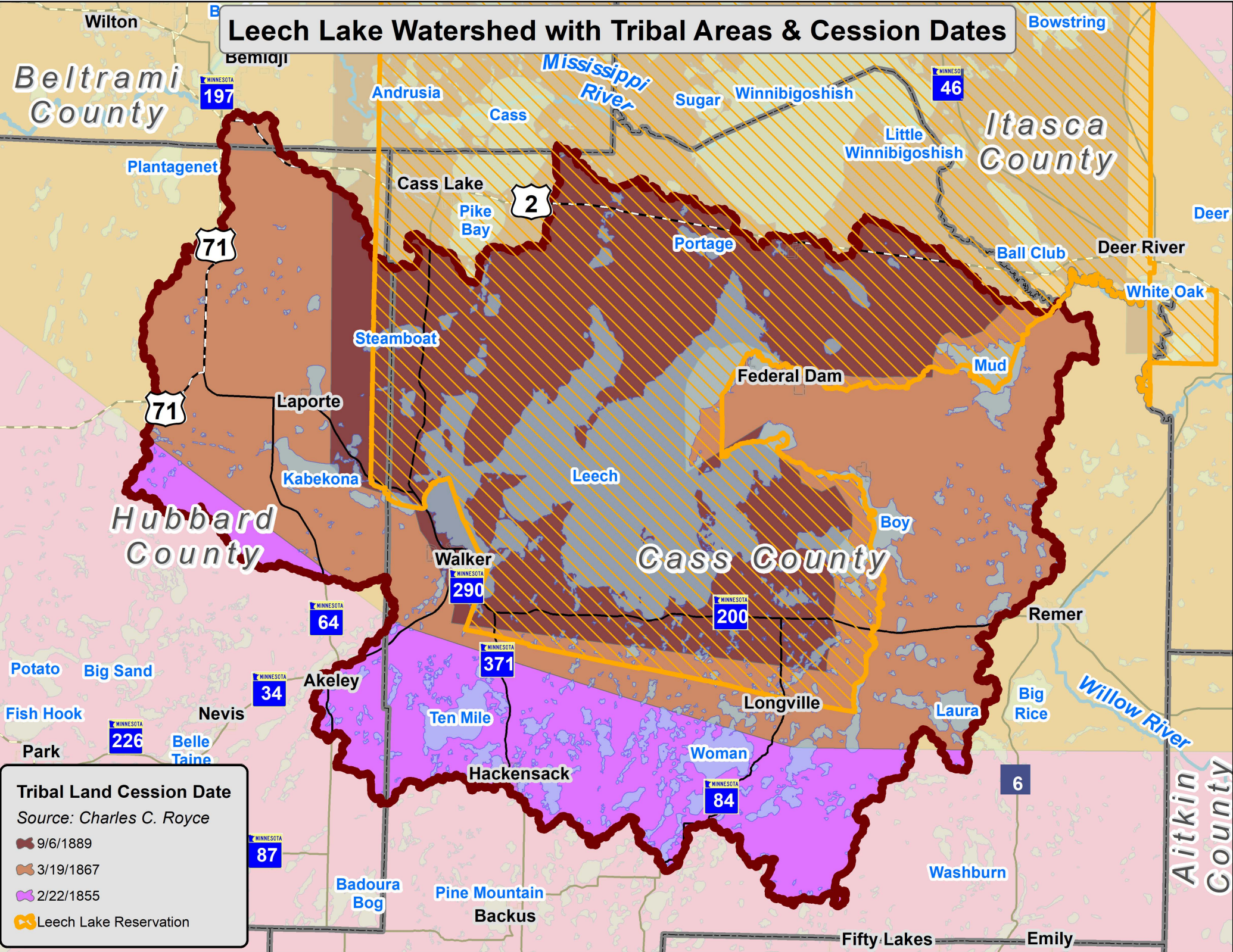
Major Watersheds

Counties

169



Leech Lake Watershed with Tribal Areas & Cession Dates



Tribal Land Cession Date
 Source: Charles C. Royce

- 9/6/1889
- 3/19/1867
- 2/22/1855
- Leech Lake Reservation

Wilton
 Beltrami County

Bowstring
 Itasca County

Plantagenet
 Hubbard County

Potato
 Big Sand
 Fish Hook
 Park
 Nevis
 Belle Taine

Andrusia
 Cass
 Mississippi River
 Sugar
 Winnibigoshish
 Little Winnibigoshish
 Cass Lake
 Pike Bay
 Portage
 Steamboat
 Laporte
 Kabekona
 Leech
 Boy
 Federal Dam
 Walker
 Ten Mile
 Hackensack
 Woman
 Longville
 Laura
 Remer
 Badoura Bog
 Pine Mountain
 Backus
 Washburn

Deer
 Deer River
 White Oak
 Mud
 Ball Club
 Deer
 Willow River
 Big Rice
 Aitkin County
 Washburn
 Fifty Lakes
 Emily

Pine and Leech RIM Easement Ranking Sheet

<u>Score</u>	<u>Max Score</u>	<u>Criteria</u>	<u>Guidelines:</u>
	30	# Feet of Shoreline	5 points for <500ft
			10 points for 500 - 999 feet of shoreline
			15 points for 1,000 - 2,000 feet of shoreline
			20 points for 2,000 - 3,000 feet of shoreline
			30 points for more than 3,000 feet of shoreline
10		Priority lakes from 1w1p	Shoreline on priority lake.
15		% of Tract Developable	1-15 points based on the proportion of the tract that is developable (10%=1.5pts)
10		Wetland fringe width	1-10 points based on the distance between the upland & the bank/water (0'=10pts, 300'=0pts)
15		Urgency	Property opportunity is likely to be lost if we do not act quickly
20		Professional Judgement	0-20 Points based on Landowners actively managing their land & riparian needs
20		RAQ	RAQ score for all parcels multiplied by 2 (Example: RAQ of 7 * 2 = 14)
10		Adjoining Applications	Ten points for land adjoining another application or processing easement.
10		Adjoining Protected Land	Ten points for land adjoining protected land.
10		Habitat Value	Based on the habitat value of the property, uniqueness, and
			lack of existing development and shoreline alterations
10		% of Parcel/Tract	1-10 points based on the proportion of the parcel enrolled (10% = 1 pt.)
10		% Forest of the parcels	1-10 points based on the proportion of the property that is forest (10% = 1 pt.)
10		Minor Watershed Priority Status from 1w1p	Priority = 10 pt., Additional Priority = 5 pts, Other = 0 pts
20		Bargain Sale/Leverage	1-20 Points based on percent discount or other funds leveraged
	200	TOTAL GROSS SCORE	
	100	Final Score (Total / 2)	



5/17/2023

Crow Wing SWCD
322 Laurel St., Suite 22
Brainerd, MN 56401

Subject: Lessard-Sams Outdoor Heritage Council Grant Application

Dear Lessard-Sams Outdoor Heritage Council Staff:

The Crow Wing SWCD Board supports the Lessard-Sams Outdoor Heritage Council Pine River and Leech Lake Watersheds conservation easements application. This partnership is between Hubbard, Cass, Crow Wing Counties, and Soil and Water Conservation Districts (SWCD). **This project will complete fifteen conservation easements on private lands and protect over 750 acres of high-quality forest upland habitat.**

Hubbard, Cass, Crow Wing Counties, and SWCDs Watershed plans identified high-quality lakes, forests, habitats, groundwater, and wetlands that must be protected from future fragmentation and development (One Watershed One Plan and Landscape Stewardship Plan). This grant application will:

- Protect aquatic habitats by protecting adjacent land to the lake.
- Measure success in annual reporting the amount of land protection within the minor watershed from land conversion or development.
- Maintain high-quality water for 1.2 million drinking water users (St. Cloud-St. Paul).
- Conservation easement on private land stay on the tax roll and with the opportunity to grow the county tax base.
- Voluntary program where landowners choose.
- Utilize the Board of Water Soil Resources (BWSR) Reinvest in Minnesota program. BWSR will hold the easements and work with SWCDs to implement the easement.

This grant will directly implement the Hubbard, Cass, and Crow Wing Water Plans and the Pine River and Leech Lake River Comprehensive Watershed Management Plans. If successful, the grant award will be after July 1, 2024. The anticipated start of the program is the summer or fall of 2024.

Comprehensive Watershed Management Plans are located on the Cass County Website:

<https://www.casscountymn.gov/1278/One-Watershed-One-Plan-Partnership>

Sincerely,

Jim Chamberlin

Jim Chamberlin
Board Chair of Crow Wing Soil and Water Conservation District
322 Laurel St., Suite 22
Brainerd, MN 56401

Vision: Clean water, productive lands, and vibrant communities.

Mission: Fostering healthy lands and clean water through voluntary conservation.

Values: Stewardship, Support, Integrity, Leadership, and Partnerships.



Leech Lake Band Of Ojibwe

Faron Jackson, Chairman
Leonard Fineday, Secretary-Treasurer

Kyle Fairbanks, District I Representative
Steve White, District II Representative
LeRoy Staples- Fairbanks III, District III Representative

DATE: 30 May 2023

SUBJECT: Lessard-Sams Outdoor Heritage Council Grant Application

To Whom It May Concern:

The Leech Lake Band of Ojibwe-Division of Resource Management supports the Lessard-Sams Outdoor Heritage Council Pine River and Leech Lake Watersheds conservation easements application. This partnership is between Hubbard, Cass, Crow Wing Counties, and Soil and Water Conservation Districts (SWCD). **This project will complete fifteen conservation easements on private lands and protect over 750 acres of high-quality forest upland habitat.**

This grant application will:

- Protect aquatic habitats by protecting adjacent land to the lake. Many lakes in this vicinity support wild rice, a traditionally harvested food for Leech Lake Ojibwe citizens.
- Measure success in annual reporting the amount of land protection within the minor watershed from land conversion or development.
- Maintain high-quality water for the citizens of Leech Lake Nation as well as Minnesota citizens.
- Voluntary program where landowners choose.
- Utilize the Board of Water Soil Resources (BWSR) Reinvest in Minnesota program. BWSR will hold the easements and work with SWCDs to implement the easement.

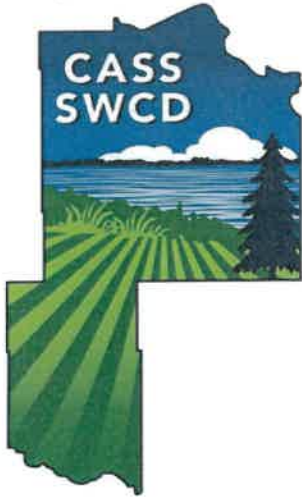
This grant will directly implement the Hubbard, Cass, and Crow Wing Water Plans and the Pine River and Leech Lake River Comprehensive Watershed Management Plans. If successful, the grant award will be after July 1, 2024. The anticipated start of the program is the summer or fall of 2024.

Comprehensive Watershed Management Plans are located on the Cass County Website:

<https://www.casscountymn.gov/1278/One-Watershed-One-Plan-Partnership>

Sincerely,

Keith Karnes, Forestry Director
Division of Resource Management
Leech Lake Band of Ojibwe



CASS SOIL & WATER CONSERVATION DISTRICT

*PO Box 3000, Walker MN 56484
218-547-7399*

Mission Statement

It is the mission of the Cass SWCD to provide leadership and technical assistance to landowners and cooperating agencies in the wise use, conservation, and management of Cass County's natural resources.

May 4th, 2023

District One
Member
Thomas Kuschel
218-587-2910
tnlkuschel@gmail.com

District Two
V. Chair
Kenneth LaPorte
218-746-3927
laporteken@yahoo.com

District Three
Interim Member
Katy Botz
botzkaty@gmail.com

District Four
Chair
David Peterson
218-566-1588
davidlp2015@gmail.com

District Five
Secretary/Treasurer
Jennifer O'Neill
218-839-6825
jennyanyspot@gmail.com

Conservation Manager
Dana Gutzmann
218-547-7256
dana.gutzmann@casscountymn.gov

District Clerk
Jenny Blue
218-547-7399
Jenny.blue@casscountymn.gov

Cass SWCD
PO Box 3000
Walker, MN 56484

Subject: Lessard-Sams Outdoor Heritage Council Grant Application

Dear Sir / Madam:

The Cass Soil and Water Conservation District supports the Lessard-Sams Outdoor Heritage Council Pine River and Leech Lake Watersheds conservation easements application. This partnership is between Hubbard, Cass, Crow Wing Counties, and Soil and Water Conservation Districts (SWCD). **This project will complete fifteen conservation easements on private lands and protect over 750 acres of high-quality forest upland habitat.**

Hubbard, Cass, Crow Wing Counties, and SWCDs Watershed plans identified high-quality lakes, forests, habitats, groundwater, and wetlands that must be protected from future fragmentation and development (One Watershed One Plan and Landscape Stewardship Plan). This grant application will:

- Protect aquatic habitats by protecting adjacent land to the lake.
- Measure success in annual reporting the amount of land protection within the minor watershed from land conversion or development.
- Maintain high-quality water for 1.2 million drinking water users (St. Cloud-St. Paul).
- Conservation easement on private land stay on the tax roll and with the opportunity to grow the county tax base.
- Voluntary program where landowners choose.
- Utilize the Board of Water Soil Resources (BWSR) Reinvest in Minnesota program. BWSR will hold the easements and work with SWCDs to implement the easement.

This grant will directly implement the Hubbard, Cass, and Crow Wing Water Plans and the Pine River and Leech Lake River Comprehensive Watershed Management Plans. If successful, the grant award will be after July 1, 2024. The anticipated start of the program is the summer or fall of 2024.

Comprehensive Watershed Management Plans are located on the Cass County Website:

<https://www.casscountymn.gov/1278/One-Watershed-One-Plan-Partnership>

Sincerely,

A handwritten signature in black ink, appearing to read "Dave Peterson", with a long horizontal flourish extending to the right.

Dave Peterson
Cass SWCD Chair



**HUBBARD COUNTY
Soil & Water
Conservation District**

May 10, 2023

Crow Wing SWCD
322 Laurel St., Suite 22
Brainerd, MN 56401

Subject: Lessard-Sams Outdoor Heritage Council Grant Application

Dear Sir / Madam:

Hubbard County Soil and Water Conservation District (HCSWCD) supports the Lessard-Sams Outdoor Heritage Council Pine River and Leech Lake Watersheds conservation easements application. This partnership is between Hubbard, Cass, Crow Wing Counties, and Soil and Water Conservation Districts (SWCD). **This project will complete fifteen conservation easements on private lands and protect over 750 acres of high-quality forest upland habitat.**

Hubbard, Cass, Crow Wing Counties, and SWCDs Watershed plans identified high-quality lakes, forests, habitats, groundwater, and wetlands that must be protected from future fragmentation and development (One Watershed One Plan and Landscape Stewardship Plan). This grant application will:

- Protect aquatic habitats by protecting adjacent land to the lake.
- Measure success in annual reporting the amount of land protection within the minor watershed from land conversion or development.
- Maintain high-quality water for 1.2 million drinking water users (St. Cloud-St. Paul).
- Conservation easement on private land stay on the tax roll and with the opportunity to grow the county tax base.
- Voluntary program where landowners choose.
- Utilize the Board of Water Soil Resources (BWSR) Reinvest in Minnesota program. BWSR will hold the easements and work with SWCDs to implement the easement.

This grant will directly implement the Hubbard, Cass, and Crow Wing Water Plans and the Pine River and Leech Lake River Comprehensive Watershed Management Plans. If successful, the grant award will be after July 1, 2024. The anticipated start of the program is the summer or fall of 2024.

Comprehensive Watershed Management Plans are located on the Cass County Website:

<https://www.casscountymn.gov/1278/One-Watershed-One-Plan-Partnership>

Sincerely,

A handwritten signature in black ink, appearing to read 'Crystal Mathisrud', with a long horizontal line extending to the right.

Crystal Mathisrud, District Manager
Hubbard County Soil and Water Conservation District
218-732-0121
Crystal.hcswcd@gmail.com