



Lessard-Sams Outdoor Heritage Council

Cannon River Watershed Habitat Protection and Restoration Program - Phase 12
ML 2023 Request for Funding

General Information

Date: 06/24/2022

Proposal Title: Cannon River Watershed Habitat Protection and Restoration Program - Phase 12

Funds Requested: \$6,519,100

Manager Information

Manager's Name: Alan Kraus

Title: Conservation Program Manager

Organization: Clean River Partners (formerly Cannon River Watershed Partnership)

Address: 710 Division Street

City: Northfield, MN 55057

Email: alan@cleanriverpartners.org

Office Number: 507-786-3913

Mobile Number:

Fax Number:

Website: <https://cleanriverpartners.org/>

Location Information

County Location(s): Le Sueur, Rice, Steele, Goodhue and Waseca.

Eco regions in which work will take place:

- Prairie
- Southeast Forest

Activity types:

- Protect in Fee
- Restore
- Enhance

Priority resources addressed by activity:

- Wetlands
- Prairie
- Forest
- Habitat

Narrative

Abstract

The Cannon River Watershed Habitat Protection and Restoration Program will protect approximately 670 acres in fee, and restore and enhance approximately 607 acres of high priority wildlife habitat within the Cannon River Watershed, including wetlands, prairies, forests, and river/shallow lake shoreline. Its goal is to protect existing high quality habitat, restore degraded habitat, prevent degradation of water quality, and provide public access.

Design and Scope of Work

The Cannon River Watershed Habitat Protection and Restoration Program - Phase 12 will continue to protect, restore, and create public access opportunities to high-quality habitat lands throughout the Cannon River Watershed. It will increase the amount of restored habitat on public lands available for hunting and angling within an easy drive for over half of Minnesota's population.

Located south of the Twin Cities, the 1,460 square mile Cannon River Watershed includes over 800 linear miles of streams and rivers that drain a diverse landscape. This area has seen increased development pressure due to the transportation ease of the I-35 corridor and the attraction of the Cannon Lakes, and much of this area has already suffered fragmentation and habitat loss. Historically comprised of Big Woods habitat, the landscape is now dominated by agricultural fields and, to a lesser extent, urban development. Agricultural practices and shoreline development are the major contributors to the impaired status of stretches of the Cannon River and its associated lakes and streams.

Part of a multi-year, multi-partner strategy, this program streamlines the coordination of protecting and restoring targeted parcels of land that positively contribute to large complexes of forests, restored prairies, wetlands, lakeshore, and river shoreline. Since 1990, Clean River Partners (formerly Cannon River Watershed Partnership - CRWP) has been the local expert of the watershed, and will coordinate this program, providing program administration and landowner outreach. Fee-title acquisitions led by The Trust for Public Land (TPL) will be targeted toward large wetland/upland complexes, rare biomes (Big Woods forest, tamarack swamp), shallow lakes, river shoreline, and lands adjacent to existing public land. TPL will convey lands to the DNR except when County ownership is appropriate. Ongoing partnerships are critical in identifying priority conservation opportunities and protection strategies for the existing high biodiversity areas.

Parcels targeted for restoration and enhancement will be evaluated by Great River Greening (GRG) in collaboration with MN DNR, County and SWCD personnel to determine existing and desired conditions for each site. Information gathered will be used to develop site specific work plans for restoring ecologically desired habitats. Project management plans will detail the methods, practices and a timeline for successful completion of each site/project. Practices could include invasive species removal, controlled burning, chemical treatment, reseeding and/or plug planting, tree stand thinning, wetland hydrology restoration, and shoreline revetments using native materials. Restorations and enhancements will be aimed at improving habitat and protecting water quality for the benefit of all wildlife and human communities.

Properties targeted for fee-title acquisition and restoration can be found in the parcel list below.

In recent years, collaboration among partners has accelerated local awareness and created strong and growing interest in land protection and habitat restoration opportunities. Continuing our collaboration and building on this momentum, we seek to increase capacity to deliver permanent land protection and habitat improvement

opportunities to protect well-connected functional forests, prairies, wetlands, lakeshores, and river shorelines that sustain and enhance native species and provides high quality outdoor recreation experiences.

How does the proposal address habitats that have significant value for wildlife species of greatest conservation need, and/or threatened or endangered species, and list targeted species?

The areas targeted by The Trust for Public Land have been identified and prioritized through state, regional and local natural resource plans due to their high biodiversity qualities and connectivity to existing public lands. Their protection will occur through fee title acquisition, and will target Big Woods, oak savannas, wetlands and sensitive shoreline communities within the Cannon River Watershed. Great River Greening will conduct significant habitat restoration and enhancement work on already permanently protected conservation lands identified by DNR and County staff within the watershed. The aim is to improve habitat values for wildlife and Species in Greatest Conservation Need (SGCN), including birds using the Mississippi River migratory corridor and pollinators. Work will restore and enhance riverine, forest, wetland, oak savanna, and prairie habitat at 9 conservation sites.

Protection, restoration and/or enhancement of these significant parcels will provide critical habitat for game species, including upland birds (dove, turkey, pheasant, and woodcock), white tail deer, migratory waterfowl (mallards, canvasback, wood ducks, hooded mergansers, pintails, and lesser scaup), and aquatic species critical for the protection of fish (trout, northern pike, black crappies, bluegills, and walleye). Protection will also provide access for a diversity of recreational experiences including duck, pheasant, turkey and deer hunting as well as river, stream, and lake fishing. The nongame wildlife, including species in Greatest Conservation Need, that also benefit from this effort includes Bald Eagle, Bell's Vireo, Cerulean Warbler, Loggerhead Shrike, Sandhill Crane, Red-headed Woodpecker, Greater Yellowlegs, Buffbreasted Sandpiper, Rusty Patched Bumble Bee, Blanding's Turtle, Wood Turtle, Mudpuppies, and the Giant Floater, a species of freshwater mussel.

What is the degree of timing/opportunistic urgency and why it is necessary to spend public money for this work as soon as possible?

Today, only 18% of the landscape in the Cannon River Watershed remains as forest, wetland or prairie habitat and many of these areas have been degraded by invasive species. Protection, restoration, and enhancement of what remains of the region's unimpaired waters and increasingly vital habitat is critically important now before they become further degraded by invasive species or by residential development and agricultural pressures. Failing to protect, restore or enhance these habitats now will result in increased restoration costs in the future. Current Outdoor Heritage Funds appropriated to this program have been fully allocated to existing projects to date. Many additional parcels with high quality habitat remain unprotected, with interested landowners willing to discuss protection opportunities for their land. Without additional funding, these lands are at risk to be sold on the open market and we will have lost existing opportunities to create new public access and outdoor recreation experiences.

Describe how the proposal uses science-based targeting that leverages or expands corridors and complexes, reduces fragmentation or protects areas identified in the MN County Biological Survey:

This program uses the Minnesota County Biological Survey, and several other GIS data analysis tools to identify priority lands for protection and restoration to create and expand conservation corridors and habitat complexes. In addition, we will consult several watershed-wide landscape planning efforts such as the Cannon River Watershed Landscape Stewardship Plan, the Cannon River Watershed - Watershed Restoration and Protection Strategies (WRAPS), and the Cannon River Watershed Comprehensive Management Plan approved by Minnesota's Board of Water and Soil Resources and ratified by the Cannon River Watershed Joint Powers Board.

Which two sections of the Minnesota Statewide Conservation and Preservation Plan are most applicable to this project?

- H1 Protect priority land habitats
- H5 Restore land, wetlands and wetland-associated watersheds

Which two other plans are addressed in this proposal?

- Minnesota's Wildlife Management Area Acquisition - The Next 50 Years
- Outdoor Heritage Fund: A 25 Year Framework

Describe how your program will advance the indicators identified in the plans selected:

This program's efforts to protect, restore and/or enhance wetland/upland complexes, prairie and shoreline habitat further the goals of both "Minnesota's Wildlife Management Area Acquisition - The Next 50 Years" and "Outdoor Heritage Fund: A 25 Year Framework." As stated in the WMA acquisition plan, key habitat areas have been identified across the State by the Division of Wildlife, and in order to ensure adequate wildlife lands for future generations, an additional 439,000 acres of new WMAs need to be acquired. In addition, The OHF: A 25 Year Framework notes that of the 18% of habitat remaining in Prairie, which the Cannon River watershed falls within, only 6% is permanently protected. This program supports the protection efforts necessary to enhance existing, and create new, WMAs that provide critical wildlife habitat that is lacking in the Cannon River Watershed due to its vicinity to intensive agriculture pressures.

Which LSOHC section priorities are addressed in this proposal?

Prairie

- Protect, enhance, or restore existing wetland/upland complexes, or convert agricultural lands to new wetland/upland habitat complexes

Southeast Forest

- Protect forest habitat through acquisition in fee or easement to prevent parcelization and fragmentation and to provide the ability to access and manage landlocked public properties

Describe how your program will produce and demonstrate a significant and permanent conservation legacy and/or outcomes for fish, game, and wildlife as indicated in the LSOHC priorities:

Our program, through land protection and restoration, will continue to prevent degradation and loss of quality habitat in the Prairie and Southeast Forest section of Minnesota, specifically the Cannon River Watershed. It will improve and increase the amount of available public lands for hunting and angling opportunities within an easy drive for over half of the State's population, and will lead to larger complexes of restored prairies, oak savannas, wetlands, lakeshore, and river shoreline which will reduce flood potential and degradation of aquatic habitat.

We work in partnership with local, state, and federal agencies, and with willing conservation-minded landowners. High quality lands are protected through fee title acquisition. Through our program, these newly acquired and protected lands, along with lands that are already protected but in a degraded state, are targeted for restoration and enhancement. The lands protected through this program are now available for the public to access for outdoor recreation activities, including hunting and fishing. To date, this multi-year program has permanently protected more than 2,500 acres and restored or enhanced 333 acres in the Cannon River Watershed utilizing the Outdoor

Heritage Fund. According to a GIS based driveshed analysis conducted by TPL, over 3.4 million people live within an hour's drive of the lands protected through the LSOHC funded Cannon River Watershed program. On-going outreach to landowners and public agencies indicate continued significant interest in permanently protecting and restoring more land with high biological significance in this valuable watershed.

What other fund may contribute to this proposal?

- Environment and Natural Resource Trust Fund
- Other
- Clean Water Fund

Does this proposal include leveraged funding?

Yes

Explain the leverage:

A portion of Clean River Partners' DSS and all of Clean River Partners' travel costs and materials/supplies costs related to outreach are provided as privately sourced leverage for this proposal.

One-half of TPL's DSS costs and all of TPL's travel costs are provided as privately sourced leverage for this proposal. TPL will attempt to bring various state, local and private funds to acquire additional property and leverage the OHF grant, and will attempt to leverage fee acquisition with partial donations of the appraised value of protected parcels.

More than one-half of GRG's DSS costs are provided as privately sourced leverage for this proposal. GRG will attempt to bring various local and private funds to leverage the enhancement and restoration activities on protected parcels.

Per MS 97A.056, Subd. 24, Please explain whether the request is supplanting or is a substitution for any previous funding that was not from a legacy fund and was used for the same purpose.

This proposal does not substitute or supplant previous funding that was not from a Legacy fund.

Non-OHF Appropriations

Year	Source	Amount
2011	ENTRF	350,000
2012	ENTRF	200,000
2012	RIM	105,000
2013	RIM	200,000

How will you sustain and/or maintain this work after the Outdoor Heritage Funds are expended?

Once land has been acquired and conveyed to the DNR, initial site development and restoration of these lands will begin. Estimated costs for initial restoration or enhancement work are included in this proposal. The Trust for Public Land will work with DNR to complete a restoration or enhancement management plan, and implementation of that plan will be completed in the following years. These properties will be managed and maintained by the Minnesota DNR according to their guidelines.

In collaboration with MN DNR, County and SWCD personnel, parcels targeted for restoration will be evaluated by Great River Greening to determine existing and desired conditions for each site. Information gathered will be used

to develop site-specific scope of work plans for restoring ecologically desired habitats. Project management plans will detail the methods and practices to be used and a timeline for successful completion of each site/project.

Actions to Maintain Project Outcomes

Year	Source of Funds	Step 1	Step 2	Step 3
2024	TPL - OHF and DNR	Post property	Develop restoration/management plan for property	-
2025	TPL - DNR	Develop restoration/management plan for property	Restore and steward property for habitat and public recreation	-
2026	TPL - DNR	Restore and steward property for habitat and public recreation	-	-
2024	GRG - OHF	Perform site evaluation and assessment in collaboration with DNR	Develop R/E plan for property. Begin monitoring	Initiate site preparation from R/E work. Continue monitoring
2025	GRG - OHF	Initiate R/E work	Continue R/E depending on appropriate methods and time of year	Continue R/E and begin stewardship as needed using appropriate methods and dependent on time of year
2026	GRG - OHF	Continue R/E and begin stewardship. Target actions to maintain habitat.	Restorative action to correct damage as needed	Evaluate progress and determine if additional actions are needed

Identify indicator species and associated quantities this habitat will typically support:

Several species have been identified by MN DNR to represent various prairie habitat indicator species: pheasant, bobolink, grasshopper sparrow, and monarch butterfly. The metrics are averages derived from existing data sources and/or scientific literature and, as such, do not reflect accuracy at a site-specific scale. Therefore, they are not intended to be used to score or rank requests, but represent the best information available to support the Council's objective.

Pheasant

Minnesota's USDA Conservation Reserve Program acres to pheasant harvest ratio indicates that three acres of prairie habitat has the potential to produce one harvested pheasant rooster.

Bobolink and Grasshopper Sparrow

The breeding territory size of bobolinks and grasshopper sparrows is estimated at 1.7 and 2.1 acres respectively in high quality habitat. If all of the habitat was occupied, a 100 acre parcel of quality prairie habitat could hold approximately 60 and 48 pairs of bobolinks and grasshopper sparrows respectively.

Monarch Butterfly

University of Minnesota research shows that it takes approximately 30 milkweed plants to result in one monarch butterfly contributing to the overwintering monarch butterfly population in Mexico. Prairies can have between 100-250 milkweed plants per acre. An acre of restored or enhanced prairie could potentially contribute 3 to 8 monarchs to the overwintering population. Additionally, almost 90% of the world's flowering plant species rely on animal pollinators such as bees, butterflies, bats, ants and birds. These animals pollinate plants that stabilize the soil, preventing erosion and improving the watershed's resilience to extreme weather events.

How will the program directly involve, engage, and benefit BIPOC (Black, Indigenous, People of Color) and diverse communities:

The partners in this program involve, engage, and benefit BIPOC and diverse communities through focused events that leverage this LSOHC funded program. For example, recent efforts, funded through other sources, have focused on increasing the engagement of BIPOC and diverse communities in volunteer events at LSOHC protected and restored sites in the Cannon River Watershed. However, this program has not used LSOHC funds to specifically and deliberately engage BIPOC and/or diverse communities in the past largely due to concerns about the language of the constitutional amendment specifying that these funds “may be spent only to restore, protect, and enhance wetlands, prairies, forests, and habitat for fish, game.”

Protecting, restoring, and enhancing diverse and resilient habitat benefits all Minnesotans. It keeps our air and water cleaner, mitigates the impacts of climate change, and conserves the biological diversity that belongs to everyone. Public land provides an opportunity for recreation and health to those who do not have access to private natural lands, whether that be for hunting, fishing, hiking, or other outdoor pursuits. Within the Cannon River Watershed, we have protected 15 places totaling more than 2,500 acres that were previously inaccessible to the general public. According to a GIS based driveshed analysis, over 3.4 million people live within an hour’s drive of the places protected by this LSOHC funded program.

Furthermore, if provided permission and guidance by the LSOHC to expand our scope of activities, we would be eager to incorporate a more thorough community engagement process into our work, specifically centering on BIPOC and diverse communities. This would primarily involve partnering with locally-led BIPOC groups focused on outdoor- and habitat-based activities. In addition, we could explore partnering with tribal nations to consider alternative roles for permanent stewardship of the land protected where appropriate. Moving forward, we will continue our outreach to BIPOC communities with funds from other sources and remain eager to expand this important work in a way that more directly, and authentically, engages diverse communities and partners in an equitable and just manner.

Activity Details

Requirements

If funded, this proposal will meet all applicable criteria set forth in MS 97A.056?

Yes

Will county board or other local government approval be formally sought prior to acquisition, per 97A.056 subd 13(j)?**

No

Describe any measures to inform local governments of land acquisition under their jurisdiction:

We will follow the County/Township Board notification processes as directed by the current statutory language.

Is the land you plan to acquire (fee title) free of any other permanent protection?

Yes

Will restoration and enhancement work follow best management practices including MS 84.973 Pollinator Habitat Program?

Yes

Is the restoration and enhancement activity on permanently protected land per 97A.056, Subd 13(f), tribal lands, and/or public waters per MS 103G.005, Subd. 15?

Yes

Where does the activity take place?

- WMA
- SNA
- AMA
- Permanently Protected Conservation Easements
- County/Municipal
- State Forests

Land Use

Will there be planting of any crop on OHF land purchased or restored in this program?

Yes

Explain what will be planted:

For lands acquired that are conveyed as WMAs to the DNR, the DNR has indicated the following: The primary purposes of WMAs are to develop and manage for the production of wildlife and for compatible outdoor recreation. To fulfill those goals, the DNR may use limited farming specifically to enhance or benefit the management of state lands for wildlife. Lands proposed to be acquired as WMAs may utilize farming to prepare previously farmed sites for native plant seeding. This is a standard practice across the Midwest. On a small percentage of WMAs (less than 2.5%), DNR uses farming to provide a winter food source for a variety of wildlife species in agriculture-dominated landscapes largely devoid of winter food sources. In some cases this necessitates the use of GMO treated products to facilitate herbicide use in order to control weeds present in the seedbank, however, neonicotinoids will not be used.

Is this land currently open for hunting and fishing?

No

Will the land be open for hunting and fishing after completion?

Yes

Describe any variation from the State of Minnesota regulations:

NA

Are there currently trails or roads on any of the proposed acquisitions?

No

Will new trails or roads be developed or improved as a result of the OHF acquisition?

No

Will the land that you acquire (fee or easement) be restored or enhanced within this proposal's funding and availability?

Yes

Other OHF Appropriation Awards**Have you received OHF dollars in the past through LSOHC?**

Yes

Approp Year	Approp Amount Received	Amount Spent to Date	Leverage Reported in AP	Leverage Realized to Date	Acres Affected in AP	Acres Affected to Date	Complete/Final Report Approved?
21	\$2,623,000	\$950,600	\$148,600	\$3,300	456	159	No
20	\$1,148,000	\$955,800	\$75,800	\$20,700	202	128	No
18	\$1,345,000	\$1,284,600	\$70,200	\$147,520	357	389	No
17	\$1,436,000	\$1,424,700	\$76,500	\$66,900	220	253	No
16	\$583,000	\$583,000	\$90,500	\$65,500	80	69	Yes
15	\$1,380,000	\$1,380,000	\$138,000	-	276	242	No
14	\$1,430,000	\$1,430,000	\$25,000	-	270	287	Yes
13	\$1,780,000	\$1,780,000	-	\$200,000	350	496	Yes
12	\$1,760,000	\$1,760,000	-	\$305,500	428	322	Yes
11	\$1,533,000	\$1,533,000	\$326,000	\$699,500	510	380	Yes

Timeline

Activity Name	Estimated Completion Date
Landowner negotiations, agreements and due diligence	June 30, 2026
Land acquired	June 30, 2027
Initial site development	Fall 2029
Finalize restoration and enhancement plans	June 30, 2025
Restoration and enhancement	June 30, 2029

Budget**Grand Totals Across All Partnerships**

Item	Funding Request	Antic. Leverage	Leverage Source	Total
Personnel	\$472,600	\$67,000	-, Private Sourced	\$539,600
Contracts	\$1,298,300	-	-	\$1,298,300
Fee Acquisition w/ PILT	\$4,000,000	-	-	\$4,000,000
Fee Acquisition w/o PILT	-	-	-	-
Easement Acquisition	-	-	-	-
Easement Stewardship	-	-	-	-
Travel	\$9,600	\$3,000	Private Sourced, Private Sourced	\$12,600
Professional Services	\$100,000	-	-	\$100,000
Direct Support Services	\$200,600	\$205,200	Private Sourced, Private Sourced, Private Sourced	\$405,800
DNR Land Acquisition Costs	\$50,000	-	-	\$50,000
Capital Equipment	-	-	-	-
Other Equipment/Tools	\$8,000	-	-	\$8,000
Supplies/Materials	\$305,000	\$1,000	Private Sourced	\$306,000
DNR IDP	\$75,000	-	-	\$75,000
Grand Total	\$6,519,100	\$276,200	-	\$6,795,300

Partner: The Trust For Public Land

Totals

Item	Funding Request	Antic. Leverage	Leverage Source	Total
Personnel	\$150,000	-	-	\$150,000
Contracts	\$20,000	-	-	\$20,000
Fee Acquisition w/ PILT	\$4,000,000	-	-	\$4,000,000
Fee Acquisition w/o PILT	-	-	-	-
Easement Acquisition	-	-	-	-
Easement Stewardship	-	-	-	-
Travel	-	\$2,000	Private Sourced	\$2,000
Professional Services	\$100,000	-	-	\$100,000
Direct Support Services	\$48,400	\$48,400	Private Sourced	\$96,800
DNR Land Acquisition Costs	\$50,000	-	-	\$50,000
Capital Equipment	-	-	-	-
Other Equipment/Tools	-	-	-	-
Supplies/Materials	-	-	-	-
DNR IDP	\$75,000	-	-	\$75,000
Grand Total	\$4,443,400	\$50,400	-	\$4,493,800

Personnel

Position	Annual FTE	Years Working	Funding Request	Antic. Leverage	Leverage Source	Total
Protection and Legal Staff	0.29	3.0	\$150,000	-	-	\$150,000

Partner: Great River Greening

Totals

Item	Funding Request	Antic. Leverage	Leverage Source	Total
Personnel	\$231,100	\$67,000	Private Sourced	\$298,100
Contracts	\$1,274,700	-	-	\$1,274,700
Fee Acquisition w/ PILT	-	-	-	-
Fee Acquisition w/o PILT	-	-	-	-
Easement Acquisition	-	-	-	-
Easement Stewardship	-	-	-	-
Travel	\$9,600	-	-	\$9,600
Professional Services	-	-	-	-
Direct Support Services	\$126,500	\$154,000	Private Sourced	\$280,500
DNR Land Acquisition Costs	-	-	-	-
Capital Equipment	-	-	-	-
Other Equipment/Tools	\$8,000	-	-	\$8,000
Supplies/Materials	\$305,000	-	-	\$305,000
DNR IDP	-	-	-	-
Grand Total	\$1,954,900	\$221,000	-	\$2,175,900

Personnel

Position	Annual FTE	Years Working	Funding Request	Antic. Leverage	Leverage Source	Total
Great River Greening Personnel	0.57	5.0	\$231,100	\$67,000	Private Sourced	\$298,100

Partner: Clean River Partners (formerly Cannon River Watershed Partnership)**Totals**

Item	Funding Request	Antic. Leverage	Leverage Source	Total
Personnel	\$91,500	-	-	\$91,500
Contracts	\$3,600	-	-	\$3,600
Fee Acquisition w/ PILT	-	-	-	-
Fee Acquisition w/o PILT	-	-	-	-
Easement Acquisition	-	-	-	-
Easement Stewardship	-	-	-	-
Travel	-	\$1,000	Private Sourced	\$1,000
Professional Services	-	-	-	-
Direct Support Services	\$25,700	\$2,800	Private Sourced	\$28,500
DNR Land Acquisition Costs	-	-	-	-
Capital Equipment	-	-	-	-
Other Equipment/Tools	-	-	-	-
Supplies/Materials	-	\$1,000	Private Sourced	\$1,000
DNR IDP	-	-	-	-
Grand Total	\$120,800	\$4,800	-	\$125,600

Personnel

Position	Annual FTE	Years Working	Funding Request	Antic. Leverage	Leverage Source	Total
Clean River Partners Staff	0.35	3.0	\$91,500	-	-	\$91,500

Amount of Request: \$6,519,100**Amount of Leverage:** \$276,200**Leverage as a percent of the Request:** 4.24%**DSS + Personnel:** \$673,200**As a % of the total request:** 10.33%**Easement Stewardship:** -**As a % of the Easement Acquisition:** -**Describe and explain leverage source and confirmation of funds:**

The partnership provides more than half of our DSS costs as privately sourced leverage and attempts to bring various state, local and private funds to acquire property and conduct enhancement/restoration activities.

Clean River Partners and TPL provide travel costs as privately sourced leverage.

Does this proposal have the ability to be scalable?

Yes

If the project received 70% of the requested funding

Describe how the scaling would affect acres/activities and if not proportionately reduced, why?

A reduction in funding would reduce outputs (acres/activities) proportionately.

Describe how personnel and DSS expenses would be adjusted and if not proportionately reduced, why?

Program management costs (personnel and DSS expenses) will be reduced as well, but not exactly proportionately because program development, coordination and oversight costs remain consistent regardless of appropriation amount.

If the project received 50% of the requested funding

Describe how the scaling would affect acres/activities and if not proportionately reduced, why?

A reduction in funding would reduce outputs (acres/activities) proportionately

Describe how personnel and DSS expenses would be adjusted and if not proportionately reduced, why?

Program management costs (personnel and DSS expenses) will be reduced as well, but not exactly proportionately because program development, coordination and oversight costs remain consistent regardless of appropriation amount.

Personnel

Has funding for these positions been requested in the past?

Yes

Please explain the overlap of past and future staffing and position levels previously received and how that is coordinated over multiple years?

FTEs listed are an estimate of the personnel time required to produce the grant deliverables put forward in this proposal. An array of staff draw from these funds for legal work, negotiating with landowners, crafting of acquisition documents, coordinating with agency partners, working with contractors, restoration and enhancement activities, conducting landowner outreach and managing the grant. We use only those personnel funds necessary to achieve the goals of the grant.

Contracts

What is included in the contracts line?

Clean River Partners contract line includes accounting service cost.

TPL's contract line includes potential site clean-up and initial restoration activities.

GRG's contract line includes restoration/enhancement contracts by service providers.

Fee Acquisition

What is the anticipated number of fee title acquisition transactions?

We anticipate we will close 3 to 4 transactions and investigate 3 others.

Travel

Does the amount in the travel line include equipment/vehicle rental?

Yes

Explain the amount in the travel line outside of traditional travel costs of mileage, food, and lodging

I understand and agree that lodging, meals, and mileage must comply with the current MMB Commissioner Plan:

Yes

Direct Support Services

How did you determine which portions of the Direct Support Services of your shared support services is direct to this program?

Clean River Partners' DSS request is calculated on allowable direct and necessary expenditures that are not captured in other line items in the budget, and a portion of these allowable direct and necessary costs are contributed as privately sourced leverage. Clean River Partners is in the process of applying for an approved rate with MN DNR.

TPL's DSS request is based upon its federal rate which has been approved by the MN DNR and 50% of these costs are requested from the OHF grant while 50% is contributed as privately sourced leverage.

GRG's DSS rate has been approved by the DNR on October 4, 2019. GRG's DSS rate includes the allowable direct and necessary expenditures that are not captured in other line items in the budget. A portion, not exceeding 50%, of these costs are requested from the grant and the balance is contributed as privately sourced leverage.

Other Equipment/Tools

Give examples of the types of Equipment and Tools that will be purchased?

Hand tools, saws, brush cutters, personal protective equipment, burn equipment, seed collection equipment, repairs and other necessary equipment to complete restoration and enhancement activities.

Federal Funds

Do you anticipate federal funds as a match for this program?

No

Output Tables**Acres by Resource Type (Table 1)**

Type	Wetland	Prairie	Forest	Habitat	Total Acres
Restore	10	236	23	0	269
Protect in Fee with State PILT Liability	168	168	168	168	672
Protect in Fee w/o State PILT Liability	0	0	0	0	0
Protect in Easement	0	0	0	0	0
Enhance	86	75	175	0	336
Total	264	479	366	168	1,277

Total Requested Funding by Resource Type (Table 2)

Type	Wetland	Prairie	Forest	Habitat	Total Funding
Restore	\$69,100	\$615,400	\$78,400	-	\$762,900
Protect in Fee with State PILT Liability	\$1,118,100	\$1,118,200	\$1,118,200	\$1,119,100	\$4,473,600
Protect in Fee w/o State PILT Liability	-	-	-	-	-
Protect in Easement	-	-	-	-	-
Enhance	\$347,400	\$243,600	\$691,600	-	\$1,282,600
Total	\$1,534,600	\$1,977,200	\$1,888,200	\$1,119,100	\$6,519,100

Acres within each Ecological Section (Table 3)

Type	Metro/Urban	Forest/Prairie	SE Forest	Prairie	N. Forest	Total Acres
Restore	0	0	0	269	0	269
Protect in Fee with State PILT Liability	0	0	0	672	0	672
Protect in Fee w/o State PILT Liability	0	0	0	0	0	0
Protect in Easement	0	0	0	0	0	0
Enhance	0	0	33	303	0	336
Total	0	0	33	1,244	0	1,277

Total Requested Funding within each Ecological Section (Table 4)

Type	Metro/Urban	Forest/Prairie	SE Forest	Prairie	N. Forest	Total Funding
Restore	-	-	\$15,100	\$747,800	-	\$762,900
Protect in Fee with State PILT Liability	-	-	-	\$4,473,600	-	\$4,473,600
Protect in Fee w/o State PILT Liability	-	-	-	-	-	-
Protect in Easement	-	-	-	-	-	-
Enhance	-	-	\$117,600	\$1,165,000	-	\$1,282,600
Total	-	-	\$132,700	\$6,386,400	-	\$6,519,100

Average Cost per Acre by Resource Type (Table 5)

Type	Wetland	Prairie	Forest	Habitat
Restore	\$6,910	\$2,607	\$3,408	-
Protect in Fee with State PILT Liability	\$6,655	\$6,655	\$6,655	\$6,661
Protect in Fee w/o State PILT Liability	-	-	-	-
Protect in Easement	-	-	-	-
Enhance	\$4,039	\$3,248	\$3,952	-

Average Cost per Acre by Ecological Section (Table 6)

Type	Metro/Urban	Forest/Prairie	SE Forest	Prairie	N. Forest
Restore	-	-	-	\$2,779	-
Protect in Fee with State PILT Liability	-	-	-	\$6,657	-

Protect in Fee w/o State PILT Liability	-	-	-	-	-
Protect in Easement	-	-	-	-	-
Enhance	-	-	\$3,563	\$3,844	-

Target Lake/Stream/River Feet or Miles

2 miles

Outcomes

Programs in prairie region:

- Key core parcels are protected for fish, game and other wildlife ~ *Core parcels are identified in partnership with the DNR as well as the partners of the Cannon River Watershed Habitat Protection and Restoration Program. Success will be determined based on the acreage of lands protected and the percentage of protected lands in the watershed.*

Programs in southeast forest region:

- High priority riparian lands, forestlands, and savannas are protected from parcelization and fragmentation ~ *Core parcels are identified in partnership with the DNR as well as the partners of the Cannon River Watershed Habitat Protection and Restoration Program . Success will be determined based on the acreage of lands protected and the percentage of protected lands in the watershed.*

Parcels

Sign-up Criteria?

No

Explain the process used to identify, prioritize, and select the parcels on your list:

The Trust for Public Land works with its public partners to identify and prioritize projects that meet their objectives and are on their priority lists. Criteria includes whether the land provides critical habitat for game and non-game species and quality public recreational opportunities, presence of unique plants and animals species (including SGCN), goals of conservation plans, adjacency to other public land or habitat complexes, existence of local support, immediacy of threats, landowner willingness and time frame.

Great River Greening works with land owning entities (public and protected private) and interested stakeholders to identify parcels where there is a need for restoration or enhancement of lands and water resources. Parcels are selected using the following criteria: permanently protected status (WMA, AMA, SNA, Forestry, County Conservation, etc.), ecological and habitat value and potential (biodiversity, size and location), congruence with existing plans and priority areas, willing and committed landowners (demonstrated through leveraged match), and leveraging opportunities.

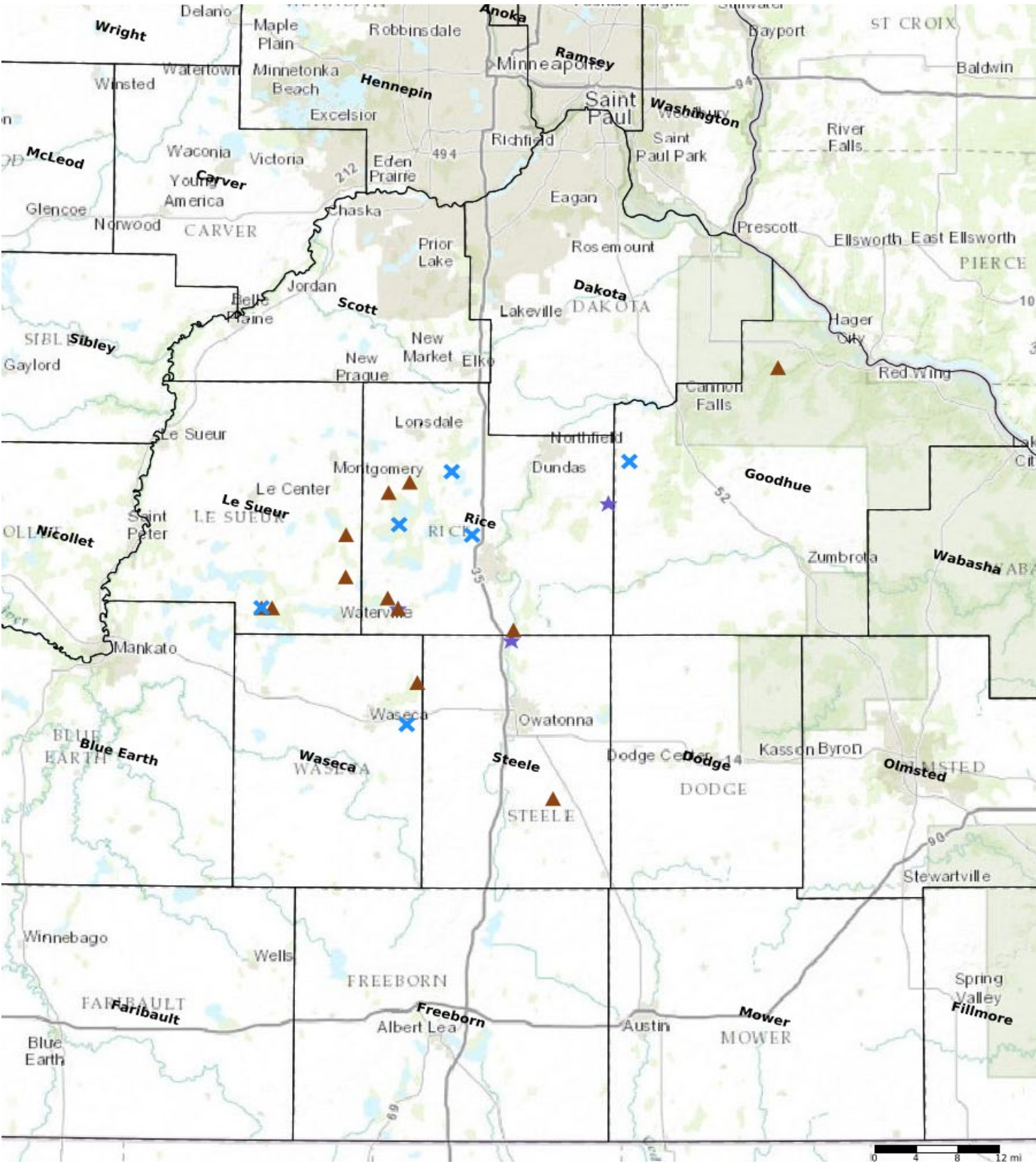
Restore / Enhance Parcels

Name	County	TRDS	Acres	Est Cost	Existing Protection
Warsaw WMA	Goodhue	11118208	63	\$212,500	Yes
Dove Lake WMA II	Le Sueur	10924221	66	\$268,900	Yes
Prairie Creek WMA	Rice	11119236	139	\$365,300	Yes
Sunktokeca WMA Ph III	Rice	11021214	19	\$75,100	Yes
Sakatah WMA Ph II	Rice	10922222	10	\$62,000	Yes
Circle Lake WMA	Rice	11121216	62	\$214,700	Yes
Boyd Sartell WMA	Rice	11022210	24	\$135,500	Yes
Faribault WMA	Steele	10820204	161	\$404,600	Yes
Goose Lake Park	Waseca	10722214	61	\$216,300	Yes

Protect Parcels

Name	County	TRDS	Acres	Est Cost	Existing Protection
Cannon River Turtle Preserve SNA II	Goodhue	11316227	200	\$615,000	No
Dove Lake WMA	Le Sueur	10924221	66	\$290,000	No
Earl Swain WMA	Le Sueur	10924222	75	\$450,000	No
Dora Lake WMA	Le Sueur	11023214	172	\$650,000	No
Sakatah WMA	Rice	10922216	80	\$210,000	No
Gray Fox WMA II	Rice	11122228	79	\$200,000	No
Big Woods Heritage Forest WMA II	Rice	11122223	227	\$950,000	No
Sakatah WMA Addition II	Rice	10922222	62	\$589,000	No
Horseshoe Lake WMA - Tract 1	Rice	10923202	150	\$750,000	No
Faribault WMA II	Rice	10920233	37	\$185,000	No
Aurora WMA Addition 2	Steele	10619219	50	\$230,000	No
Moonan Marsh WMA	Waseca	10822225	75	\$316,000	No

Parcel Map



CANNON RIVER WATERSHED

HABITAT PROTECTION AND RESTORATION

PROGRAM - PHASE 12

ABOUT THE PROGRAM

The goals of this program are to protect existing high quality habitat, restore degraded habitat, prevent degradation of water quality, and provide public access to lands within the Cannon River Watershed.

Over the next 3 to 5 years, this request will permanently protect approximately 1,273 acres and restore or enhance approximately 605 acres of high priority wildlife habitat, creating new public accesses within an hour drive for more than half of all Minnesotans.



Trout Lily WMA



Cannon River
Turtle Preserve SNA



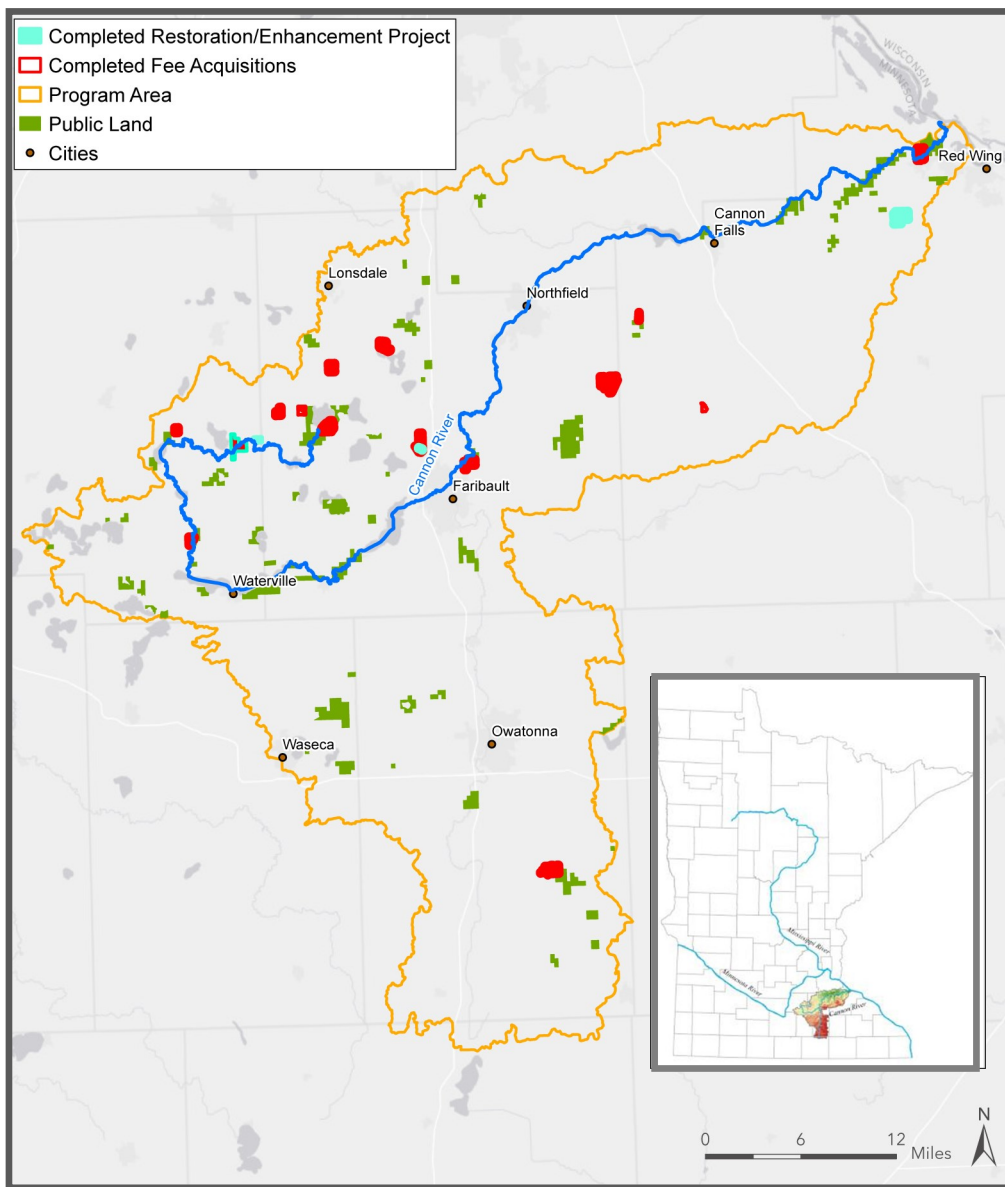
Big Woods
Heritage Forest WMA

HERITAGE FUND REQUEST

\$6,519,100 to protect more than 1,273 acres and restore or enhance approximately 605 acres

CANNON RIVER WATERSHED

Located south of the Twin Cities, the 1,460 sq. mile Watershed includes over 800 linear miles of streams and rivers that drain a diverse landscape. Historically comprised of Big Woods, prairie and wetland habitat, the landscape is now dominated by agricultural fields and, to a lesser extent, development. **Today, only 18% of the landscape remains as forest, wetland or prairie habitat and many of these areas have been degraded.** High quality habitat in the Cannon River Watershed continues to be degraded by invasive species or converted to rural residential development and to agricultural production. Protection, restoration, and enhancement of high quality habitat are important for maintaining what remains of the region's unimpaired waters and increasingly vital habitat needs.



ACCOMPLISHMENTS

- Created 7 new Wildlife Management Areas (WMAs), 1 new Aquatic Management Area and expanded 8 WMAs
- Expanded Cannon River Turtle Preserve Scientific and Natural Area by 25%
- 2,578 acres have been permanently protected and are now publicly accessible
- 333 acres of habitat have been restored or enhanced across four WMAs and a county park

These protected and restored places now provide valued habitat for a wide variety of wildlife, offering quality hunting opportunities for waterfowl, deer, pheasant and turkeys and trout fishing within an hour's drive for 3.4 million Minnesotans.

PARTNERS

Clean River Partners, a member-based nonprofit organization, inspires people and organizations to value, protect, and improve the Cannon River Watershed's land and water. Clean River Partners will administer and coordinate the program and conduct landowner outreach.

The Trust for Public Land works to protect land and create parks for people, ensuring healthy, livable communities for generations to come. Since 1986, The Trust for Public Land has protected over 170 special places throughout the State of Minnesota totaling over 100,000 acres. TPL will be responsible for protecting land in fee.

Great River Greening has worked for more than 25 years restoring land and water resources throughout Minnesota. With the help of local volunteers, GRG has restored degraded forests and prairies and improved our outdoor recreation experiences, our economy and our drinking water. GRG will be responsible for restoring and enhancing habitat.

For more information about this proposal, please contact Alan Kraus Clean River Partners Conservation Program Manager at 507-786-3913 x 3 or alan@cleanriverpartners.org





May 9, 2022

Lessard-Sams Outdoor Heritage Council
100 Rev. Dr. Martin Luther King Jr. Blvd
State Office Building, Room 95
Saint Paul, MN 55155

Letter of Support – Cannon River Watershed Habitat Protection and Restoration Phase 12,

This letter is to serve as our support for Great River Greening, as a member of the Cannon River Watershed Habitat Protection and Restoration Program, as they seek funding through the Lessard-Sams Outdoor Heritage Fund as created by the Clean Water, Land and Legacy Amendment for the implementation of habitat restoration, protection, and enhancement of the native ecosystems of Minnesota, in addition to expanding access of those resources to the communities in which they are located.

We support this request for assistance on the Cannon River Watershed Phase 12 proposal as it will expand the environmentally conscious opportunities for land management and natural resource preservation. We also support Great River Greening's efforts to demonstrate the conservation and stewardship that everyday individuals can participate in these public projects, as well as gain understanding of practices outlined within the Minnesota Conservation and Preservation Plan that will continue to maintain the quality of Minnesota's natural areas.

Great River Greening's effort to inspire and lead local communities in restoring and conserving the land and water that enrich our lives will be exemplified through the work outlined in this proposal, and our organization would like to partner with that effort.

Sincerely,

Waseca County Parks

Brian Tomford

Building & Grounds Director