



Lessard-Sams Outdoor Heritage Council

Shell Rock River Watershed Habitat Restoration Program Phase XII

ML 2023 Request for Funding

General Information

Date: 06/16/2022

Proposal Title: Shell Rock River Watershed Habitat Restoration Program Phase XII

Funds Requested: \$4,641,900

Manager Information

Manager's Name: Courtney Phillips

Title: Program and Project Manager

Organization: Shell Rock River Watershed District

Address: 214 West Main St.

City: Albert Lea, MN 56007

Email: courtney.phillips@co.freeborn.mn.us

Office Number: 507-379-8782

Mobile Number: 507-402-4824

Fax Number:

Website: www.shellrock.org

Location Information

County Location(s): Freeborn.

Eco regions in which work will take place:

- Prairie

Activity types:

- Enhance
- Protect in Fee
- Restore

Priority resources addressed by activity:

- Habitat
- Wetlands

Narrative

Abstract

The Shell Rock River Watershed District (SRRWD) is seeking funding for their Habitat Restoration Program to restore, enhance, and protect 415 acres of essential prairie upland, wetland, lake and streambank habitat across the watershed. As a result of the projects, key biological functioning parcels will be permanently protected, streambank habitat will be enhanced, vegetation and feeding sources will be restored for migratory fowl habitat and wetlands will be restored from row crop agriculture. Projects are critical for the benefit of fish, waterfowl, and wildlife populations, reversing the trend of wetland loss and habitat degradation.

Design and Scope of Work

The SRRWD created a phased approach to restore, protect, and enhance degraded habitat conditions by implementing projects on a lake-shed basis. Specifically, Phase XII will contribute to the District's goals by:

- Acquire 200 acres of key targeted acquisitions to protect wooded riparian areas, establish upland prairie and wetlands, and permanently protect 40 acres of historic oak woodlands.
- Restore 150 acres of wetland basins, reversing wetland loss and habitat degradation while improving nesting habitat and waterfowl food sources.
- Enhance habitat on 65 acres of lakeshore and streambank sites that are critical for wildlife.
- Reestablish vegetation into upland prairie from agricultural use in an important flyway that is crucial to nesting waterfowl, upland game, and other wading bird species.

This proposal uses a programmatic approach to achieve protection, restoration, and enhancement of lakes, wetlands, streams and native prairie landscapes. The program includes projects that are prioritized on the significance of the benefits to aquatic habitat, urgency of the work, availability of leveraged funds, location of projects and agreements with relevant planning documents. All projects listed above have landowner support, who are eager to get funding. The SRRWD has a proven track record with the LSOHC and implementing projects that protect, restore and enhance natural resources. The SRRWD continues to receive strong support for these projects from landowners, local governments and sporting organizations.

The program will also interconnect and reestablish important flyway habitats within Minnesota. Once completed, the program will establish waterfowl and fish populations, increase habitat for wetland dependent wildlife, and recreate the wildlife mecca in southern Minnesota. Finally, this program will preserve an outdoor legacy for Minnesotans to use and enjoy for generations.

Background:

The SRRWD covers 246 square miles inside Freeborn County and includes a complex system of wetlands, streams, and shallow lakes that drain into the Shell Rock River. Managing habitat for this complex system is imperative to the SRRWD as well as understanding its role for providing critical habitat for fish, waterfowl and wildlife. Habitat degradation of wetlands, streams, and shallow lakes is an issue of statewide importance that requires accelerated investment in projects to reverse this degradation. Protection and restoration of this critical habitat is the highest priority of the SRRWD and is directly affected by invasive aquatic vegetation, land use changes, increased water demands, populations of invasive fish species, such as common carp, and artificial drainage. Degradation in habitat is influencing available food sources for game fish populations such as, Northern Pike, Bluegill, Yellow Perch and Walleye, and duck populations including Northern Pintail, Redhead, Canvasback and Lesser Scaup.

How does the proposal address habitats that have significant value for wildlife species of greatest conservation need, and/or threatened or endangered species, and list targeted species?

Using the Minnesota Department of Natural Resources tool for species in greatest conservation need by habitat, the SRRWD has identified species of importance for the Oak Savanna landscape. Those species include the Marsh Wren and Common Moorhen for birds, mussels such as Sheepnose and Round Pigtoe, and amphibians including the Blanding's turtle.

The Common Moorhen is listed as special concern in the Oak Savanna habitat and can be attributed to the loss of well-vegetated ponds and wetlands. With projects proposed in Phase XII, wetland creation and vegetation enhancement of 150 acres can provide restored habitat for both the Common Moorhen and March Wren. Blanding's turtles are listed as being a threatened species and completing the streambank restorations identified in this proposal will include habitat restorations, such as turtle hibernaculums, and by restoring wetlands with marshy areas will provide habitat for this threatened species.

One of the fastest declining populations in Minnesota is the native mussel. The freshwater mussel is threatened by a multitude of sources including dams and stream channelization, wetland drainage, bank erosion, invasive mussels and water pollution. The District is focused on improving 65 acres of in-water features that will improve that quality of habitat for the threatened Round Pigtoe, and endangered Sheepnose mussels.

The SRRWD understands that when critical habitats are lost due to land use changes and other factors, restoring the habitat is imperative to the protection of species and their ecological processes. Important species are disappearing at an alarming rate and the SRRWD has the opportunity to protect targeted specific habitats and the species that call it home.

What is the degree of timing/opportunistic urgency and why it is necessary to spend public money for this work as soon as possible?

For protection projects, landowner willingness is a large factor in determining the urgency to be completed. Securing these properties while having a willing landowner is imperative to its success. Landowners often get frustrated if funding isn't available when they want to sell. Other factors such as death and financial situations can change, resulting in properties no longer being available. If a landowner comes to the District expressing to sell, we act as fast as possible. All acquisitions in this proposal have eager landowners.

For restoration and enhancement projects, with the extent of wetland, streambank, and in-lake habitat loss in Minnesota, restoration efforts are an issue that needs immediate attention. Degraded habitat and impairments remain that require action to restore and enhance habitat for many species. Science and resource based planning have been utilized to strategically select projects that will advance restoration goals specified in our Restoration Program.

Describe how the proposal uses science-based targeting that leverages or expands corridors and complexes, reduces fragmentation or protects areas identified in the MN County Biological Survey:

The SRRWD utilizes precision conservation modeling with monitoring to identify Property Management Zones (PMZs) on a sub-watershed basis. The PMZs was a watershed wide parcel review where habitat areas were ranked on a 1 to 3 scale. This scale incorporated a variety of measures including size of the habitat complex to be protected, proximity to existing protection, location to MN County Biological Survey (MCBS) areas and distance to a water source.

One of the seven project locations is in an area identified in the MCBS. Five of the seven project locations are adjacent or in close proximity to areas identified on the MCBS. Projects such as these are important to expand corridors and reach the targeted nine square mile parcels. Implementing site specific habitat restorations projects, in line with areas identified in the MCBS, are progressively improving populations of native fish, waterfowl and wildlife habitat to once again create a wildlife mecca.

Historically the Shell Rock River Watershed is a shallow lake system with diverse populations of fish, waterfowl and wildlife. With degraded habitat becoming a concern, and more areas listed as below biodiversity significance in the MCBS, the District has ongoing efforts with identifying key PMZs to implement projects that expand habitat corridors and protect areas identified on the MCBS.

Which two sections of the Minnesota Statewide Conservation and Preservation Plan are most applicable to this project?

- H2 Protect critical shoreland of streams and lakes
- H5 Restore land, wetlands and wetland-associated watersheds

Which two other plans are addressed in this proposal?

- Minnesota's Wildlife Management Area Acquisition - The Next 50 Years
- North American Waterfowl Management Plan

Describe how your program will advance the indicators identified in the plans selected:

The Habitat Restoration Program accelerates the efforts of the Conservation and Preservation Plan, H2, with the restoration of 65 acres of critical shoreline habitat to protect from degradation and assure public access for fishing and natural resource management. The Habitat Restoration Program also applies to the Minnesota's Wildlife Management Area Acquisition plan by acquiring 200 acres in Ecological Section 6 which has a goal of 68,480 new WMA land acres to be purchased.

The Habitat Restoration Program advances H5 by investing in prioritized wetlands that were drained for agricultural use and converting them back into wetland complexes to improve breeding success and migratory habitat. The 150 acres of multiple wetland restorations and vegetation enhancements will also follow Goal 2 in the North American Waterfowl Management Plan for increasing wetland habitat sufficient to sustain waterfowl population levels.

Which LSOHC section priorities are addressed in this proposal?

Prairie

- Protect, enhance, or restore existing wetland/upland complexes, or convert agricultural lands to new wetland/upland habitat complexes

Describe how your program will produce and demonstrate a significant and permanent conservation legacy and/or outcomes for fish, game, and wildlife as indicated in the LSOHC priorities:

In Minnesota's prairie region, shallow lake and wetland ecosystems are vital components to a productive landscape for a wide array of animals. It is imperative to recognize the loss of small wetlands and native prairie in the prairie region of Minnesota. The SRRWD is proposing to reverse wetland loss by turning 150 acres of agricultural land into wetlands to provide habitat and food sources for migratory birds.

Four streambank restoration projects will create spawning habitat, cover, and refuge for fish, habitat for wildlife, and will restore the growth of healthy aquatic vegetation. This also demonstrates a permanent conservation legacy by restoring habitat on public lands, increasing public access to fishing, improving native fish reproduction and providing protection from long term endangerment from invasive plant species by incorporating vegetation management. Key targeted habitat acquisitions, comprising of 200 acres, will be protected to provide long term habitat for wildlife.

Phase XII also plans to reestablish 150 acres of vegetation into upland prairie for permanent habitat. All restoration and enhancement projects will have vegetation management in low grounds that include bulrush, smartweed, and marsh milkweed species to provide habitat and food sources for migratory birds. Upland prairie mix will be established to promote pollinator success. Enhancement efforts to this large scale degree provides habitat for both spring and fall migration of waterfowl, overall increases the use days by migratory birds, and increases nesting habitat.

What other fund may contribute to this proposal?

- N/A

Does this proposal include leveraged funding?

Yes

Explain the leverage:

The SRRWD is an agency that has a local option sales tax in place that will be used to leverage funds. Some staff time will also be used as in-kind match.

Per MS 97A.056, Subd. 24, Please explain whether the request is supplanting or is a substitution for any previous funding that was not from a legacy fund and was used for the same purpose.

Not applicable.

Non-OHF Appropriations

Year	Source	Amount
2012	Local Tax Levy	180,000
2013	Local Tax Levy	230,000
2014	Local Tax Levy	804,750
2015	Local Tax Levy	200,000
2016	Local Tax Levy	750,000
2017	Local Tax Levy	500,000
2018	Local Tax Levy	400,000
2019	Local Tax Levy	400,000
2020	Local Tax Levy	300,000
2021	Local Tax Levy	250,000

How will you sustain and/or maintain this work after the Outdoor Heritage Funds are expended?

The SRRWD is authorized by Minnesota state statute 103D and operates under a series of 10 year Water Management Plans.

The SRRWD relies on multiple funding sources including a citizen driven local option sales tax, local levy, and multiple public and private funding sources including previously LSOHC phased projects to assist in the District's

restoration efforts. The District has an aggressive monitoring protocol that generates yearly data used for extensive reporting. The habitat efforts that accrue from the Phase XII Restoration Program will be easily incorporated into this existing results-driven reporting framework. This reporting can be used to generate public interest and education on a watershed based restoration approach. The District has commitment and funding sources necessary to maintain existing and future natural resource management projects.

Actions to Maintain Project Outcomes

Year	Source of Funds	Step 1	Step 2	Step 3
2024-2026	Sales Tax and LSOHC	Construction	Maintenance	-
2026+	Sales Tax	Maintenance Inspections	Maintenance Implementations	-

Identify indicator species and associated quantities this habitat will typically support:

The Upper Mississippi River and Great Lakes Region Joint Venture (UMRGLRJV) states for Mallard breeding habitat at least a minimum of one hectare (2.47 acres) is required for each breeding pair. Optimal habitat includes a complex of shallow herbaceous wetlands and grasslands. Phase XII is proposing 150 acres of shallow wetland restorations that could provide new habitat niches for over 60 nesting pairs. The additional wetland or marsh conditions could provide an additional 800 use days for Lesser Scaup, Northern Pintail, American Bittern and other waterfowl, and provide feeding and nesting ground for the concerned Marsh Wren and Common Moorhen.

Local staff expects to see the increase of 5 breeding pairs of Swans as a result of the restored wetland restorations. Bobolinks populations will also increase as a result of associated upland plantings. Pollinators such as butterflies and bees will have increased food supplies with upland plantings that consist of native flowers. Habitat for the Northern Long-Eared Bat will be protected.

The shoreline restorations will provide habitat structures resulting in a proposed 40% increase in the breeding success and overall biomass of fish and amphibians that can be supported. One additional pair of river otters is expected as a result of the streambank restorations as well. The streambank restorations will also support a variety of species including the threatened Blanding's turtle and Round Pigtoe mussel by providing protected shoreline and streambank habitat. Caddisfly and stonefly will be used as indicator species for water quality.

How will the program directly involve, engage, and benefit BIPOC (Black, Indigenous, People of Color) and diverse communities:

The SRRWD has used, and continues to use, the Understanding Environmental Justice in Minnesota tool, developed by the Minnesota Pollution Control Agency, to understand where BIPOC and diverse communities are present in the watershed area. The SRRWD tries to implement projects within those areas when possible based on landowner willingness.

Additionally the SRRWD has a digital option to view this program. Digital options give diverse community members an option to engage regardless of language, color, transportation, or gender.

Activity Details

Requirements

If funded, this proposal will meet all applicable criteria set forth in MS 97A.056?

Yes

Will county board or other local government approval be formally sought prior to acquisition, per 97A.056 subd 13(j)?**

Yes

Is the land you plan to acquire (fee title) free of any other permanent protection?

Yes

Will restoration and enhancement work follow best management practices including MS 84.973 Pollinator Habitat Program?

Yes

Is the restoration and enhancement activity on permanently protected land per 97A.056, Subd 13(f), tribal lands, and/or public waters per MS 103G.005, Subd. 15?

Yes

Where does the activity take place?

- Public Waters

Land Use

Will there be planting of any crop on OHF land purchased or restored in this program?

No

Is this land currently open for hunting and fishing?

Yes

Describe any variation from the State of Minnesota regulations:

Public waters are open to state fishing regulations. Private lands are not open to public hunting.

Will the land be open for hunting and fishing after completion?

Yes

Describe any variation from the State of Minnesota regulations:

Restoration within City limits will be open to public fishing, but not hunting.

Are there currently trails or roads on any of the proposed acquisitions?

No

Will new trails or roads be developed or improved as a result of the OHF acquisition?

No

Will the land that you acquire (fee or easement) be restored or enhanced within this proposal's funding and availability?

Yes

Other OHF Appropriation Awards

Have you received OHF dollars in the past through LSOHC?

Yes

Approp Year	Approp Amount Received	Amount Spent to Date	Leverage Reported in AP	Leverage Realized to Date	Acres Affected in AP	Acres Affected to Date	Complete/Final Report Approved?

2020	\$1,918,000	\$723,656	\$100,000	-	483	133	No
2018	\$1,421,000	\$745,216	\$100,000	\$19,082	152	72	No
2021	\$1,547,000	\$17,525	\$75,000	-	389	0	No
2019	\$2,046,000	\$583,108	\$100,000	-	315	83	No
2017	\$1,779,000	\$1,699,844	\$100,000	-	296	276	No
2016	\$1,200,000	\$1,157,200	\$40,000	\$461,000	1,040	211	Yes
2015	\$2,414,000	\$2,405,200	\$60,000	\$65,900	3,235	1,320	Yes
2013	\$1,827,000	\$1,827,000	\$438,800	\$438,800	3,100	3,100	Yes
2011	\$2,577,000	\$2,577,000	\$7,665,000	\$7,555,400	257	257	Yes
2010	\$655,000	\$655,000	\$295,000	\$214,900	694	694	Yes

Timeline

Activity Name	Estimated Completion Date
Begin project planning, design, permitting work and acquisitions	July 2023
Begin projects during the 2023-2024 construction season following completion of design, permits, and contracting	2023 -2024 Construction Season
Complete all restoration and habitat improvement projects and finalize acquisitions	End of 2025 Construction Season
Vegetation enhancement on restoration projects; complete final project construction	June 2027
Maintenance and monitoring of all restoration and habitat improvement projects	Ongoing

Budget**Totals**

Item	Funding Request	Antic. Leverage	Leverage Source	Total
Personnel	\$70,000	\$20,000	Local Option Sales Tax	\$90,000
Contracts	\$2,401,600	-	-	\$2,401,600
Fee Acquisition w/ PILT	\$1,237,200	-	-	\$1,237,200
Fee Acquisition w/o PILT	\$97,200	-	-	\$97,200
Easement Acquisition	-	-	-	-
Easement Stewardship	-	-	-	-
Travel	-	-	-	-
Professional Services	\$835,900	\$80,000	Local Option Sales Tax	\$915,900
Direct Support Services	-	-	-	-
DNR Land Acquisition Costs	-	-	-	-
Capital Equipment	-	-	-	-
Other Equipment/Tools	-	-	-	-
Supplies/Materials	-	-	-	-
DNR IDP	-	-	-	-
Grand Total	\$4,641,900	\$100,000	-	\$4,741,900

Personnel

Position	Annual FTE	Years Working	Funding Request	Antic. Leverage	Leverage Source	Total
Program Assistant	0.43	5.0	\$30,000	\$10,000	Local Option Sales Tax	\$40,000
Program Manager	0.43	5.0	\$40,000	\$10,000	Local Option Sales Tax	\$50,000

Amount of Request: \$4,641,900**Amount of Leverage:** \$100,000**Leverage as a percent of the Request:** 2.15%**DSS + Personnel:** \$70,000**As a % of the total request:** 1.51%**Easement Stewardship:** -**As a % of the Easement Acquisition:** -**Describe and explain leverage source and confirmation of funds:**

Leverage is from the Watershed District's secured local option sales tax.

Does this proposal have the ability to be scalable?

Yes

If the project received 70% of the requested funding**Describe how the scaling would affect acres/activities and if not proportionately reduced, why?**

70% funding would mean a reduction of enhancement and restoration projects. All protect in fee projects would still be completed.

Describe how personnel and DSS expenses would be adjusted and if not proportionately reduced, why?

Personnel would be reduced from \$70,000 down to \$45,000, very similar to a proportionate reduction. Leveraged in-kind amounts would stay the same.

If the project received 50% of the requested funding

Describe how the scaling would affect acres/activities and if not proportionately reduced, why?

Funding would be centered on acquiring one of the protection projects first, as it is important to connect two previously protected parcels. With the remaining funds, only a few of the projects would be restored and only one would be enhanced. Funding would be solicited again.

Describe how personnel and DSS expenses would be adjusted and if not proportionately reduced, why?

The District does not use DSS. The grant funded personnel costs would be reduced to 65%, but the in-kind staff dollar amounts would be moved from personnel to professional expenses.

Personnel

Has funding for these positions been requested in the past?

Yes

Please explain the overlap of past and future staffing and position levels previously received and how that is coordinated over multiple years?

The SRRWD has an extensive time-tracking system that allows staff members to track time for each project within each grant. Each year this system is updated to reflect current active grants.

Contracts

What is included in the contracts line?

All the work in the contracts line is centered on enhancement and restoration costs, minus 20% professional services and staff time.

Fee Acquisition

What is the anticipated number of fee title acquisition transactions?

There are three fee-title acquisitions.

Federal Funds

Do you anticipate federal funds as a match for this program?

No

Output Tables**Acres by Resource Type (Table 1)**

Type	Wetland	Prairie	Forest	Habitat	Total Acres
Restore	175	0	0	20	195
Protect in Fee with State PILT Liability	150	0	0	28	178
Protect in Fee w/o State PILT Liability	0	0	0	22	22
Protect in Easement	0	0	0	0	0
Enhance	0	0	0	20	20
Total	325	0	0	90	415

Total Requested Funding by Resource Type (Table 2)

Type	Wetland	Prairie	Forest	Habitat	Total Funding
Restore	\$2,671,000	-	-	\$146,000	\$2,817,000
Protect in Fee with State PILT Liability	\$1,326,500	-	-	\$157,000	\$1,483,500
Protect in Fee w/o State PILT Liability	-	-	-	\$114,400	\$114,400
Protect in Easement	-	-	-	-	-
Enhance	-	-	-	\$227,000	\$227,000
Total	\$3,997,500	-	-	\$644,400	\$4,641,900

Acres within each Ecological Section (Table 3)

Type	Metro/Urban	Forest/Prairie	SE Forest	Prairie	N. Forest	Total Acres
Restore	0	0	0	195	0	195
Protect in Fee with State PILT Liability	0	0	0	178	0	178
Protect in Fee w/o State PILT Liability	0	0	0	22	0	22
Protect in Easement	0	0	0	0	0	0
Enhance	0	0	0	20	0	20
Total	0	0	0	415	0	415

Total Requested Funding within each Ecological Section (Table 4)

Type	Metro/Urban	Forest/Prairie	SE Forest	Prairie	N. Forest	Total Funding
Restore	-	-	-	\$2,817,000	-	\$2,817,000
Protect in Fee with State PILT Liability	-	-	-	\$1,483,500	-	\$1,483,500
Protect in Fee w/o State PILT Liability	-	-	-	\$114,400	-	\$114,400
Protect in Easement	-	-	-	-	-	-
Enhance	-	-	-	\$227,000	-	\$227,000
Total	-	-	-	\$4,641,900	-	\$4,641,900

Average Cost per Acre by Resource Type (Table 5)

Type	Wetland	Prairie	Forest	Habitat
Restore	\$15,262	-	-	\$7,300
Protect in Fee with State PILT Liability	\$8,843	-	-	\$5,607
Protect in Fee w/o State PILT Liability	-	-	-	\$5,200
Protect in Easement	-	-	-	-
Enhance	-	-	-	\$11,350

Average Cost per Acre by Ecological Section (Table 6)

Type	Metro/Urban	Forest/Prairie	SE Forest	Prairie	N. Forest
Restore	-	-	-	\$14,446	-
Protect in Fee with State PILT Liability	-	-	-	\$8,334	-

Protect in Fee w/o State PILT Liability	-	-	-	\$5,200	-
Protect in Easement	-	-	-	-	-
Enhance	-	-	-	\$11,350	-

Target Lake/Stream/River Feet or Miles

18,282 Feet

Outcomes

Programs in prairie region:

- Protected, restored, and enhanced shallow lakes and wetlands ~ *Protected, restored, and enhanced shallow lakes and wetlands will be measured by the increase of use days for migrating waterfowl and increased angler success as a result of improved habitat in shallow lakes. The protected, restored and enhanced shallow lakes, wetlands, and streambanks will provide habitat to wildlife and support healthy natural resource conditions for long term benefits. The projects will offer an oasis for migratory waterfowl by re-establishing and connecting MCBS corridors, and flyway habitats. Improved and permanently protected areas will provide a lasting habitat for Minnesota's unique species and provide improved access to public natural resources.*

Parcels

Sign-up Criteria?

No

Explain the process used to identify, prioritize, and select the parcels on your list:

Parcels are selected using the Property Management Zones (PMZs). The PMZs are identified using precision conservation modeling, along with monitoring, and science based targeting. Parcels are then prioritized and ranked based on the degree of habitat degradation, restoration potential, and landowner interest and support. All parcels listed below have willing landowners ready to complete the projects if funding allows.

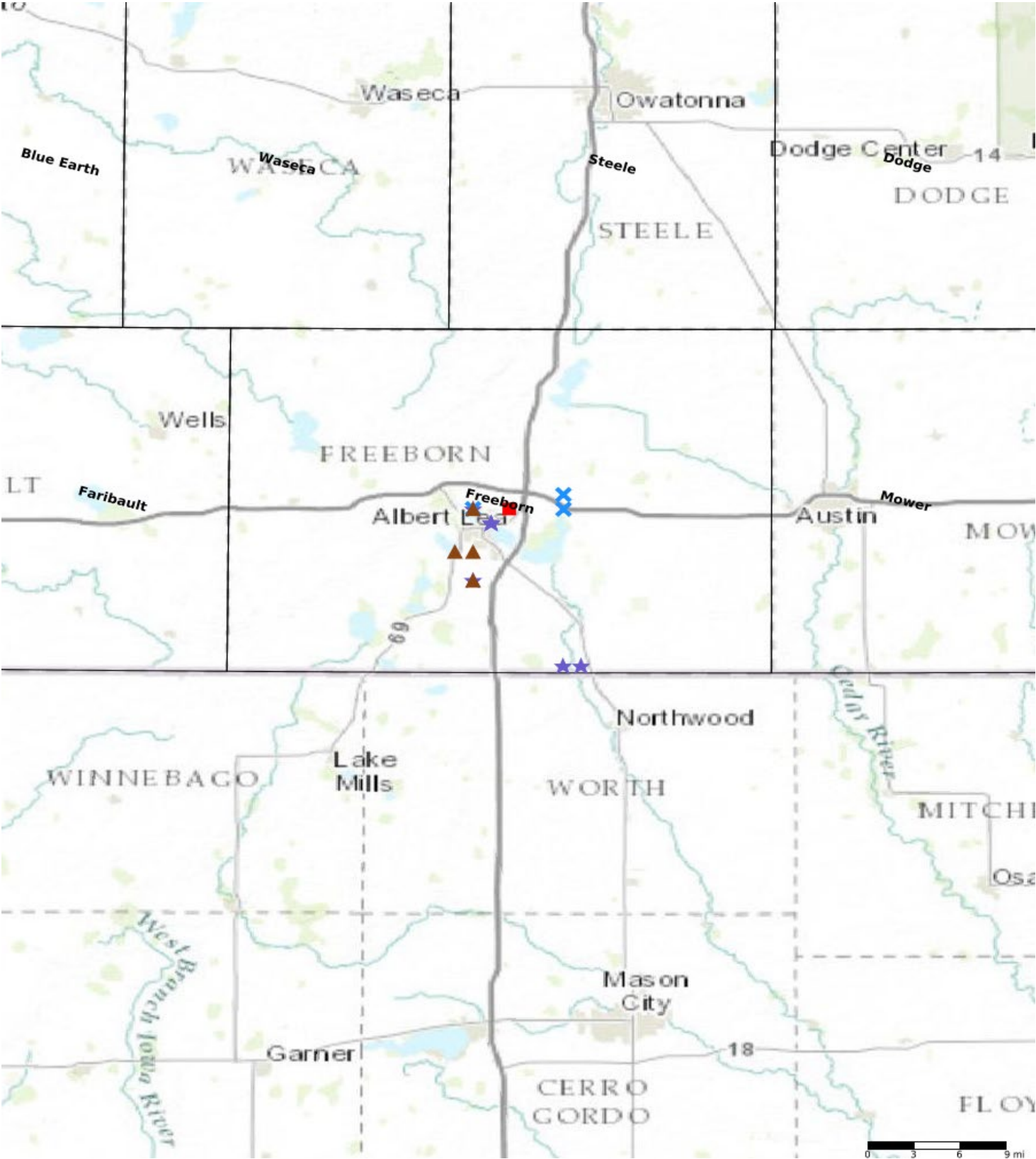
Restore / Enhance Parcels

Name	County	TRDS	Acres	Est Cost	Existing Protection
Houg Streambank	Freeborn	10120231	13	\$85,800	No
Houg Streambank	Freeborn	10120232	7	\$46,200	No
Channel Restoration	Freeborn	10221209	11	\$992,200	No
Channel Restoration	Freeborn	10221209	9	\$811,800	No
Channel Restoration	Freeborn	10221209	5	\$451,000	No
Olson Property	Freeborn	10221205	40	\$107,200	No
Olson Property	Freeborn	10221232	110	\$294,800	No
Fountain Lake Shoreline	Freeborn	10221205	5	\$65,000	No
Oakland Stream Enhancement	Freeborn	10220206	5	\$49,333	No
Oakland Stream Enhancement	Freeborn	10320231	10	\$98,666	No

Protect Parcels

Name	County	TRDS	Acres	Est Cost	Existing Protection
Goose Lake Property	Freeborn	10221203	22	\$114,400	No
Ordalen Property	Freeborn	10221219	8	\$40,800	No
Ordalen Property	Freeborn	10221220	20	\$102,200	No
Olson Property	Freeborn	10221205	40	\$350,000	No
Olson Property	Freeborn	10221232	110	\$962,500	No

Parcel Map



- Protect in Easement
- ▲ Protect in Fee with PILT
- Protect in Fee W/O PILT
- ★ Restore
- ✕ Enhance
- ⊕ Other

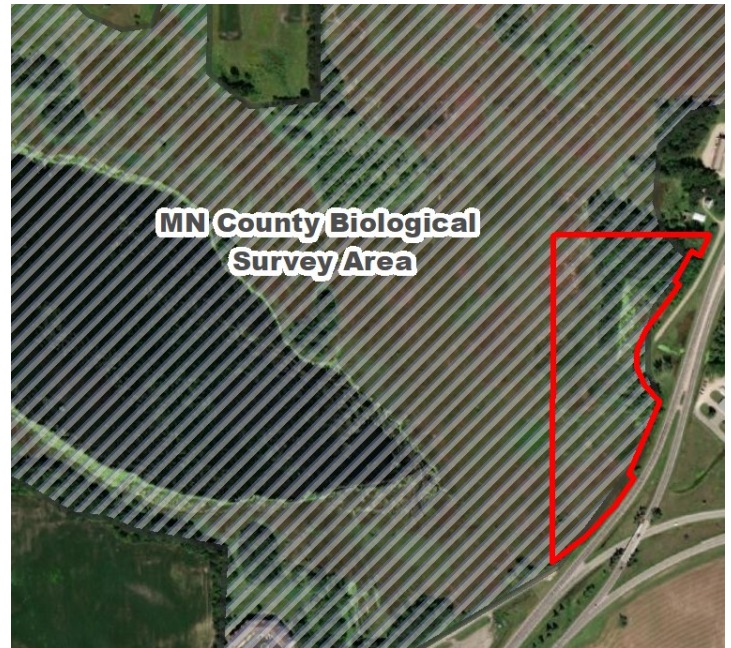
Shell Rock River Watershed Habitat Restoration Program, Phase XII LSOHC Funding Request: \$4,641,900

Protection Projects:

Goose Lake Property (right):

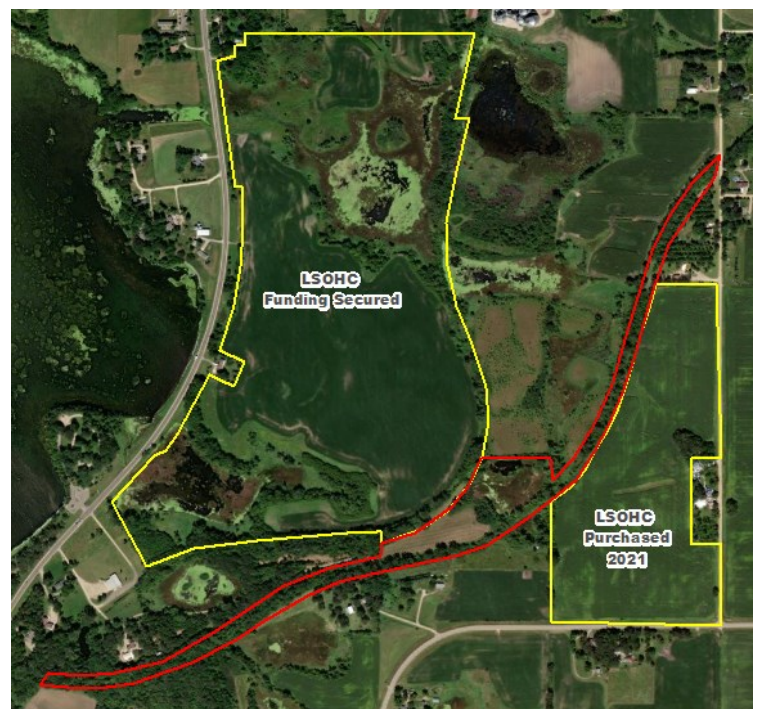
Protecting 22 acres of MCBS, woody upland and floodplain habitat from development.

Also, creating increased public access to public waters and increasing public land size by adding 22 acres on to U.S. Fish and Wildlife Service property.



Olson Property (left):

150 acres with historic oak woodlands will be permanently protected. Restoration of this property also includes seeding with native prairie plants and creating wetlands where possible.



Pickerel Lake Property (right):

This 28 acre property consists of wetlands and wooded areas. More importantly, this property will connect two previously funded LSOHC projects. This compliments building larger habitat complexes, as well as shows the success of the Habitat Restoration Program and working with landowners in a programmatic approach.

Shell Rock River Watershed Habitat Restoration Program, Phase XII

Lessard-Sams Outdoor Heritage Funding Request: \$4,641,900



Enhancement and Restoration:

Fountain Lake Shoreline (top): Restoration to prevent continued degradation of a shoreline.

Oakland Project (bottom left): Streambank enhancement on a native meandering stream to improve aquatic habitat.

Channel Restoration (bottom right): Streambank restoration to reduce sedimentation that smothers fish eggs and incorporate habitat features for fish and amphibians.



About the Program

The Watershed Habitat Restoration Program Phase XII proposal will restore, enhance and protect 415 acres of essential shallow lake, wetland and streambank habitat across the watershed.

As a result of the projects, key biological functioning parcels will be permanently protected, streambank habitat will be enhanced, vegetation and feeding sources will be restored for migratory fowl habitat and wetlands will be restored from row crop agriculture.

The restorations will provide optimal feeding locations for dabbling ducks and shorebirds while also providing habitat for species of concern in our area including the Marsh Wren and Common Moorhen.



L-SOHC Grant -Shell Rock River Watershed Habitat Restoration Program

Project List

Project Title	Description	Est. Cost	Type of Project	Water Plan	Plan Priority Connection	Sub-watershed	Section, Twshp, Range	Acres	Parcel	Completed?
Pickere! Lake-Adjustable outlet	Install adjustable outlet on Pickere! Lake to enhance lake habit thru periodic draw-downs	\$ 615,250	Restore	TMDL	4.0 Pickere! Lake Table 4-3, Page 15, PL-11, description pg. 21	49016	T102 R22 S13	620	99130010	Yes
Upper and Lower Twin Lake Fish Barrier and Reclamation	Maintain and enhance existing game fish population and improve waterfowl habitat	\$ 743,750	Enhance	Watershed District	Appendix B, Project Goal 6, Objective 2, Implementation Action 1	49011	T101 R22 S12	464	339200010	Yes
Upper Twin Water Level Control Station	To assist in drawdown of Upper Twin Lake to re-establish native vegetation and improve waterfowl habitat	\$ 397,500	Enhance	Watershed District	Appendix B, Project Goal 6, Objective 1, Implementation Action 1	49011	T101 R22 S02	213	49020010	Yes
Wedge Creek Reach #6 Wetland	Establishment of a wetland basin to improve waterfowl habitat	\$ 243,570	Enhance	TMDL	Page 46, Table 6-3, BMP FLWB-09, Water quality project near Wedge Creek outlets.	49013	T103 R22 S36	19	140360020	Yes
Wedge Creek Restoration Reach #6	Install BMP's for improvement of in stream spawning and over-wintering habitat of native fish species	\$ 450,800	Restore	TMDL	Page 46, Table 6-3, BMP FLWB-09, Water quality project near Wedge Creek outlets.	49013	T103 R22 S36	4	140360020	Yes
Wedge Creek Reach #1 Vegetative Restoration	Reestablish native vegetation to improve upland game and waterfowl nesting habitat	\$ 72,450	Enhance	Watershed District	Appendix E, Objective 2, Implementation Action 2	49013	T102 R21 S6	41	80060070	Yes
Pickere! Lake Site #12 Channel/Wetland Restoration	Establishment of a wetland basin to improve waterfowl habitat and Northern Pike spawning	\$ 40,250	Restore	Watershed District	Appendix B, Goal 2, Objective 3.1, Upper Watershed treatments to enhance and sustain improvements in the lake environment.	49016	T102 R22 S13	5	90505030	Yes
Targeted Habitat Acquisition; Owens Property	Protect and Reestablish native vegetation to improve upland game and waterfowl nesting habitat	\$ 400,000	Protect	Watershed District	Appendix B, Goal 2, Objective 3.2, Preservation and enhancement of shoreland and riparian zones around lakes and along water courses in the watershed.	49016	T102 R21 S30	40	80360020	Yes
Miller Tract - Wetland restoration	Establishment of a wetland basin to improve waterfowl habitat	\$ 201,250	Restore	Watershed District	Appendix B, Goal 2, Objective 3.1, Upper Watershed treatments to enhance and sustain improvements in the lake environment.	49014	T102 R23 S1	75	100010013	Yes
Targeted Habitat Acquisition; Mud Lake Property	Protect and Reestablish native vegetation to improve upland game and waterfowl nesting habitat	\$ 140,000	Protect	Watershed District	Appendix B, Goal 2, Objective 3.2, Preservation and enhancement of shoreland and riparian zones around lakes and along water courses in the watershed.	49016	T102 R22 S12	27	90120130	Yes
Targeted Habitat Acquisition; Schroeder Property	Protect and Reestablish native vegetation to improve upland game and waterfowl nesting habitat	\$ 280,000	Protect	Watershed District	Appendix B, Goal 2, Objective 3.2, Preservation and enhancement of shoreland and riparian zones around lakes and along water courses in the watershed.	49018	T101 R21 S33	23	30330040	Yes
IC & E WPA Wetland Enhancement	Establishment of native vegetation and wetland basins for waterfowl and wildlife habitat	\$ 67,725	Enhance	TMDL	Appendix B, Goal 2, Objective 3.1, Upper Watershed treatments to enhance and sustain improvements in the lake environment.	49013	T102 R22 S6	171	090060020, 090060013	Yes
Targeted Habitat Acquisition; Orr Property	Protect and Reestablish native vegetation to improve upland game and waterfowl nesting habitat	\$ 666,750	Protect	Watershed District	Appendix B, Goal 2, Objective 3.2, Preservation and enhancement of shoreland and riparian zones around lakes and along water courses in the watershed.	49007	T102 R22 S06	80	90060013	Yes
Headwaters Stream Bank Habitat Restoration	Restoration of habitat along the headwater property to improve wildlife habitat	\$ 775,625	Restore	Watershed District	Appendix E, Goal 2, Objective 3. Implemetation Action 2	49007	T102 R21 S25	25	80250021	Yes
Vandegrift Wetland Restoration	Establishment of a wetland basin to improve waterfowl habitat	\$ 225,625	Restore	TMDL	6.0 Fountain Lake, Table 6-3, pg 44, FLWB-15 description pg. 51	49013	T103 R22 S36	20	140362022	90%
Targeted Habitat Acquisition; Belshan Property	Protect and Reestablish native vegetation to improve upland game and waterfowl nesting habitat	\$ 456,025	Protect	Watershed District	Appendix B, Goal 2, Objective 3.1, Upper Watershed treatments to enhance and sustain improvements in the lake environment.	49016	T102 R21 S20	57	80200320	Yes
Shell Rock River Streambank Restoration	Restoration of habitat along the WMA property to improve wildlife habitat	\$ 615,000	Enhance	Watershed District	Appendix E, Goal 2, Objective 3. Implemetation Action 2	49009	T101 R20 S31	15	29310030	95%
Orr Wetland Restoration	Establishment of a wetland basin to improve waterfowl habitat	\$ 371,250	Restore	TMDL	6.0 Fountain Lake, Table 6-3, pg 44, FLWB-14 description pg. 51	49013	T102 R22 S6	80	90060013	80%
Fountain Lake In-Lake Habitat Restoration	Creation of in-lake and shoreline habitat structures for improved fisheries habitat	\$ 1,324,775	Restore	Watershed District	Appendix B, Goal 2, Objective 3. Habitat rehabilitation that focuses on implementation of both in lake and upper watershed projects	49003	T102 R21 S05	232	348120010	20%
Targeted Habitat Acquisition; Chrch Lake Property	Permanently protect and provide access to Church Lake while improving the condition of habitat	\$ 609,000	Protect	Watershed District	Appendix B, Goal 2, Objective 3.2, Preservation and enhancement of shoreland and riparian zones around lakes and along water courses in the watershed.	49011	T102 R22 S26	80	90260050	Yes
Fountain Lake Pioneer Lakeshore Restoration	Restoration of habitat along Fountain Lake to improve fish spawning	\$ 137,225	Restore	Watershed District	Appendix E, Goal 2, Objective 3. Implemetation Action 2	49003	T102 R21 S8	3	347290050	Yes
Targeted Habitat Acquisition; Shell Rock River Glenville Property	Restoration of habitat along streambank property to improve wildlife habitat	\$ 132,610	Protect	Watershed District	Appendix B, Goal 2, Objective 3.2, Preservation and enhancement of shoreland and riparian zones around lakes and along water courses in the watershed.	49007	T101 R20 S06	21	275000080	Yes
Targeted Habitat Acquisition; Bancroft Property	Protection and establishment of native vegetation and wetland basins for waterfowl and wildlife habitat	\$ 857,900	Protect	Watershed District	Appendix B, Goal 2, Objective 3.1, Upper Watershed treatments to enhance and sustain improvements in the lake environment.	49012	T103 R21 S21 & 16	112	130210030, 130160060	Yes
Bancroft Wetland Restoration	Establishment of a wetland basin to improve waterfowl habitat	\$ 365,000	Restore	Watershed District	Appendix E, Goal 2, Objective 2.2 Prioritize wetlands throughout the watershed	49012	T103 R21 S21 & 16	50	130210030, 130160060	5%
Panicum Prairie Enhancement Project	Enhance native vegetation to improve waterfowl feeding and nesting habitat in a key targeted area	\$ 477,500	Enhance	Watershed District	Appendix B, Goal 7, Objective 4. Enhance water quality throughout the restoration of aquatic plants, wildlife habitat and fisheries	49011	T101 R21 S35	300	39350010	10%
Targeted Habitat Acquisition: Pickere! Lake Property	Protect and Reestablish native vegetation to improve upland game and waterfowl nesting habitat	\$ 1,347,000	Protect	Watershed District	Appendix B, Goal 2, Objective 3.1, Upper Watershed treatments to enhance and sustain improvements in the lake environment.	49016	T102 R21 S17,18,19,20	218	80190090, 080170070, 080180250, 080200380	10%
IC & E WPA Wetland Enhancement	Establishment of native vegetation and wetland basins for waterfowl and wildlife habitat	\$ 200,000	Enhance	Watershed District	Appendix B, Goal 2, Objective 3.1, Upper Watershed treatments to enhance and sustain improvements in the lake environment.	49014	T102 R22 S6; T103 R23 S1	171	90060020, 090060021, 100010013, 100010014	25%
Bancroft Stream Enhancement	Enhancement of habitat along Bancrof Creek to improve wildlife habitat	\$ 437,000	Enhance	Watershed District	Appendix B, Goal 7, Objective 4. Enhance water quality throughout the restoration of aquatic plants, wildlife habitat and fisheries	49012	T102 R21 S29 & 32	15	130280102, 130290100,342940021	New
South Shore Enhancement	Enhancement of native vegetation and wetland basins for waterfowl and wildlife habitat	\$ 90,000	Enhance	Watershed District	Appendix B, Goal 2, Objective 3. Habitat rehabilitation that focuses on implementation of both in lake and upper watershed projects	49003	T102 R21 S26	40	80260111	New
Targeted Habitat Acquisition; Eberhart Lake	Permanently protect and provide access to Eberhart Lake	\$ 245,000	Protect	Watershed District	Appendix B, Goal 2, Objective 3.2, Preservation and enhancement of shoreland and riparian zones around lakes and along water courses in the watershed.	49016	T102 R22 S23	60	90230060	New
Targeted Habitat Acquisition; Church Lake	Permanently protect and provide access to Church Lake while improving the condition of habitat	\$ 71,500	Protect	Watershed District	Appendix B, Goal 2, Objective 3.2, Preservation and enhancement of shoreland and riparian zones around lakes and along water courses in the watershed.	49011	T102 R22 S23	22	90230080	New
Pickere! Lake Restoration	Protect and reestablish native vegetation to improve upland game and waterfowl nesting habitat	\$ 406,000	Restore	Watershed District	Appendix E, Goal 2, Objective 2.2 Prioritize wetlands throughout the watershed	49016	T102 R21 S17,18,19,20	249	80190090, 080170070, 080180250, 080200380	New
Eberhart Lake Restoration	Restoration of habitat along the Eberhart Lake to improve wildlife habitat	\$ 148,500	Restore	Watershed District	Appendix B, Goal 2, Objective 3. Habitat rehabilitation that focuses on implementation of both in lake and upper watershed projects	49016	T102 R22 S23	60	90230060	New
Targeted Habitat Acquisition; Olson Property	Protect historic oak savanna and return agricultural ground to native prairie	\$ 1,312,500	Protect	Watershed District	Appendix E, Goal 2, Objective 3. Implemetation Action 2	49008	T102 R21 S32, T101 R21 S5	150	080320050, 030050050	New
Targeted Habitat Acquisition; Ordalen Property	Protect and connect habitat corridors to form a bigger complex.	\$ 143,000	Protect	Watershed District	Appendix B, Goal 2, Objective 3.2, Preservation and enhancement of shoreland and riparian zones around lakes and along water courses in the watershed.	49016	T102 R21 S20 & 19	28	080200360, 080190260	New
Targeted Habitat Acquisition; Goose Lake	Protect and Reestablish native vegetation to improve upland game and waterfowl nesting habitat	\$ 114,400	Protect	Watershed District	Appendix B, Goal 2, Objective 3.2, Presevation and enhancement of shoreland and riparian zones around lakes and along water courses in the watershed.	49012	T102 R21 S03	22	342110040	New
Fountain Lake Shoreline	Enhancement of habitat along Fountain Lake to improve fish spawning	\$ 65,000	Enhance	Watershed District	Appendix E, Goal 2, Objective 3. Implentation Action 2	49012	T102 R21 S5	5	342720040	New
Channel Restoration	Restoration and naturalization of a Channel in an urban setting to increase habitat success and public access	\$ 2,255,000	Restore	Watershed District	Appendix B, Goal 2, Objective 3.1, Upper Watershed treatments to enhance and sustain improvements in the lake environment.	49003	T102 R21 S9	25	341870291, 341870300, 341870280	New
Oakland Stream Enhancement	Enhancement along a streambank to improve aquatic habitat	\$ 148,000	Enhance	Watershed District	Appendix B, Goal 2, Objective 3.2, Preservation and enhancement of shoreland and riparian zones around lakes and along water courses in the watershed.	49003	T103 R20 S31, T102 R20 S6	15	120310071, 070060013	New
Houg Streambank	Restoration along a streambank to improve aquatic habitat	\$ 132,000	Restore	Watershed District	Appendix B, Goal 2, Objective 3.2, Preservation and enhancement of shoreland and riparian zones around lakes and along water courses in the watershed.	49009	T101 R20 S32 & 31	20	20320240, 020310091	New
Olson Property Restoration	Protect and reestablish native vegetation to improve upland game habitat	\$ 402,000	Restore	Watershed District	Appendix E, Goal 2, Objective 2.2 Prioritize wetlands throughout the watershed	49008	T102 R21 S32	150	080320050, 030050050	New

Color Coding for Project Phases:					
Phase 4	ML 15, FY 16	Expires 18 & 20	Phase 5	ML 16, FY 17	Expires 19 & 21
Phase 6	ML 17, FY 18	Expires 20 & 22	Phase 7	ML 18, FY 19	Expires 21 & 23
Phase 8	ML 19, FY 20	Expires 22 & 24	Phase 9	ML 20, FY 21	Expires 23 & 25
Phase 10	ML 21, FY 22	Expires 24 & 26	Phase 11	ML 22, FY 23	Expires 25 & 27
Phase 12	ML 23, FY 24	Expires 26 & 28			

Resolution 2022-06
Shell Rock River Watershed District
L-SOHC Grant Application

BE IT RESOLVED that the Shell Rock River Watershed District, hereinafter referred to as "Applicant" acts as legal sponsor for the Shell Rock River Watershed Habitat Restoration Program - Phase XII contained in the **Lessard-Sams Outdoor Heritage Council (L-SOHC) Application** to be submitted on May 26, 2022, and;

BE IT FURTHER RESOLVED that Applicant is hereby authorized to apply to the LSOHC, hereinafter referred to a "State," for funding of intended projects on behalf of the Applicant.

BE IT FURTHER RESOLVED that the Applicant has the legal authority to apply for financial assistance, and the institutional, managerial and financial capability to ensure adequate acquisition, maintenance and protection of the intended projects.

BE IT FURTHER RESOLVED that the Applicant has not incurred any construction costs or has not entered into any written agreements to purchase property for intended projects.

BE IT FURTHER RESOLVED that the Applicant has not violated any Federal, State, or local laws pertaining to fraud bribery, graft, kickbacks, collusion, conflict of interest or other unlawful or corrupt practice.


BE IT FURTHER RESOLVED that upon approval of the application by the State, the Applicant may enter into an agreement with the State for the above-referenced projects, and that the Applicant certifies that it will comply with all applicable laws and regulations as stated in the contract agreement.

NOW, THEREFORE BE IT RESOLVED that Andy Henschel, District Administrator for the Shell Rock River Watershed District, is hereby authorized to execute such Agreements as are necessary to implement the intended projects on behalf of the Applicant.

Date: May 10, 2022



Mitchel Dörger
SRRWD Vice-Chairman



Alan Bakken
SRRWD Treasurer