



Lessard-Sams Outdoor Heritage Council

Protecting Minnesota's Lakes of Outstanding Biological Significance - Phase 2
ML 2023 Request for Funding

General Information

Date: 06/23/2022

Proposal Title: Protecting Minnesota's Lakes of Outstanding Biological Significance - Phase 2

Funds Requested: \$9,225,000

Manager Information

Manager's Name: Wayne Ostlie

Title: Director of Land Protection

Organization: Minnesota Land Trust

Address: 2356 University Avenue W Suite 240

City: St. Paul, MN 55114

Email: wostlie@mnland.org

Office Number: 651-917-6292

Mobile Number: 651-894-3870

Fax Number:

Website: www.mnland.org

Location Information

County Location(s): Cass.

Eco regions in which work will take place:

- Northern Forest

Activity types:

- Protect in Easement
- Protect in Fee

Priority resources addressed by activity:

- Habitat
- Forest

Narrative

Abstract

This program will bring focused conservation to one of Minnesota's priority aquatic resources, Lakes of Outstanding Biological Significance. These threatened lakes possess outstanding fisheries and provide habitat for a variety of Species in Greatest Conservation Need (SGCN); yet, at present, no habitat protection program specifically targets these priority resources. Through this proposal, the Minnesota Land Trust and Northern Waters Land Trust will protect through perpetual conservation easement and fee acquisition 6 miles of shoreland and 1,500 acres of habitat associated with the top 10% of these lakes in northeast and northcentral Minnesota.

Design and Scope of Work

Northern Minnesota's lakes comprise one of the most biologically important systems in the state for fish, game and wildlife. They are also one of its most threatened. The development and disturbance of the state's remaining highest quality lakes – Lakes of Outstanding Biological Significance (LOBS) - continues to be a threat identified in many of the State's resource protection plans, including the most recent One-Watershed-One-Plan documents and County Water Plans. These lakes represent the "best of the best" aquatic and shoreland habitat and are characterized by exceptional fisheries (both game and non-game), high aquatic plant richness and floristic quality, and populations of endangered or threatened plant and imperiled lake bird species. These lakes are priorities for protection.

To preserve this important component of Minnesota's aquatic natural heritage, Minnesota Land Trust (MLT) and Northern Waters Land Trust (NWLTL) propose to target these LOBS for protection via conservation easements and fee title acquisition. Fee title acquisitions under this program will be conveyed to the MN DNR for long-term management and permanent protection.

This Program fills an otherwise unmet need related to the protection of this resource; no other program is focused principally on the protection of LOBS. This work builds on the success demonstrated in Phases 1-5 of MLT's Critical Shorelands Program and is a continuation of the Protecting Minnesota's Outstanding Biodiversity Lakes Program Phase 1 Program – all funded by the Outdoor Heritage Fund with LSOHC recommendation. NWLTL has been added as a program partner due to their capacity to facilitate fee title acquisition of priority properties.

Together, program partners MLT and NWLTL will protect 1,500 acres within watersheds of prioritized LOBS through permanent conservation easements and fee title acquisition. Thirty-four of such lakes have been prioritized for action based on an evaluation of DNR's benefit-cost score and investment priorities as identified in the County Water Plans and One-Watershed-One-Plan documents. NWLTL submitted a proposal to the Midwest Glacial Lakes Partnership (that is highly ranked and is likely to receive funding) to develop a GIS parcel analysis to further refine and score parcels, and target properties that complete gaps in existing protected land, contain the highest-quality habitat, and provide the greatest leverage to the state.

MLT will seek donations of easement value and will purchase easements that help complete key complexes. Conservation easements secured under this program will be drafted to prevent the fragmentation and destruction of habitat and ensure they remain ecologically viable and productive for fish, game and wildlife by prohibiting land uses that negatively impact the important habitat values.

Outcomes from this project include: 1) healthier populations of fish, waterfowl, and other species in greatest conservation need; 2) maintaining water quality of priority aquatic resources; 3) increased participation of private landowners in habitat protection projects; and 4) enhancement of prior state and local investments made in

shoreland and forest conservation in the region. Program partners will strategically target complexes of protected lands in which these outcomes are maximized.

How does the proposal address habitats that have significant value for wildlife species of greatest conservation need, and/or threatened or endangered species, and list targeted species?

The lakes and natural shorelands around Minnesota's celebrated lakes comprises one of the most biologically important systems in the state for fish, game and wildlife and is also one of its most threatened. This program will preserve critical shoreland and associated habitats identified by MN DNR as Lakes of Outstanding Biological Significance. These areas protect fish and wildlife populations including trout, walleye, northern pike, and other fish, waterfowl, and other SGCN and help maintain water quality of priority aquatic resources. Some SGCNs that would benefit include American Woodcock, Olive-sided Flycatcher, Golden-winged Warbler, Winter Wren, Black-backed Woodpecker, northern pike and smallmouth bass.

As noted previously, these lakes represent the "best of the best" aquatic and shoreland habitat and are characterized by exceptional fisheries (both game and non-game), high aquatic plant richness and floristic quality, and populations of endangered or threatened plant and imperiled lake bird species.

Numerous plans have identified the protection of these habitats as a conservation priority for Minnesota, including the Minnesota Wildlife Action Plan, DNR's Aquatic Management Area program, the State Conservation and Preservation Plan, Minnesota DNR Strategic Conservation Agenda, and Outdoor Heritage Fund: A 25 Year Framework. The central goal of this program is to protect high-quality habitat by securing permanent conservation easements and fee title acquisitions in strategic locations on high biodiversity lakes that do not have other protection programs available to them.

What is the degree of timing/opportunistic urgency and why it is necessary to spend public money for this work as soon as possible?

Development and disturbance of the State's remaining sensitive shoreland habitat continues to be a threat identified in many of the State's resource protection plans. DNR and other scientists indicate that shoreland systems are one of the most biologically diverse and important for a variety of wildlife species; they are also one of Minnesota's most threatened resources.

The COVID-19 pandemic drove many people to relocate to seasonal homes in Northern Minnesota. Landowners can work, live, and play from the same location. Realtors in our program area have reported a rapid increase in demand for lakeshore property. With land values rising in the region and development pressures looming, now is the time to protect these LOBS and maximize the effectiveness of this outstanding habitat protection project. We are building considerable momentum with effective partnerships, and believe these synergistic efforts will increase leveraging and maximize results.

Describe how the proposal uses science-based targeting that leverages or expands corridors and complexes, reduces fragmentation or protects areas identified in the MN County Biological Survey:

The proposal is significantly informed by scientific assessments and conversations with key scientists working in the field.

Our Program is informed heavily through input by MN DNR fisheries biologist Paul Radomski, who developed the methodology that is the basis for DNR's benefit-cost analysis of high-quality and high-value lakes that provides for the greatest return on investment. This benefit-cost score is a function of phosphorus sensitivity, lake size, and

catchment disturbance. This benefit-cost analysis is one of the key criteria used in selecting priority LOBS targeted for protection.

Our approach is further informed by research completed by Cross and Jacobson (2013), which noted that phosphorus concentrations generally become elevated when watershed land use disturbance reached 25%. Their research further showed that lakes with watersheds that have less than 40% land use disturbance would be good candidates for protection. For this reason, our focus is on lakes having a protection level of greater than 60% in place.

This proposal prioritizes 34 lakes through an evaluation of DNR’s Lakes of Outstanding Biological Significance GIS layer for Northeast and North-central Minnesota. Each lake was analyzed relative to the following criteria: 1) Protection level – based on percent of protected lands in each lake’s watershed 2) Opportunity for protection – based on the number of private parcels greater than 35 acres for each lake, and 3) DNR’s benefit-cost analysis – selection of high-quality, high-value lakes that likely provide the greatest return on investment. In addition, we reviewed County Water Plans and One-Watershed-One-Plan documents to cross reference priority lakes for protection identified in these plans. Based on this analysis 34 lakes were prioritized.

When evaluating individual parcels, the following resources will further inform protection priorities: Minnesota’s Wildlife Action Plan 2015-2025; Sensitive Lakeshore inventories that have been completed in Cass, Crow Wing, Aitkin and Itasca counties.

Which two sections of the Minnesota Statewide Conservation and Preservation Plan are most applicable to this project?

- H2 Protect critical shoreland of streams and lakes
- H6 Protect and restore critical in-water habitat of lakes and streams

Which two other plans are addressed in this proposal?

- Long Range Plan for Fisheries Management
- Minnesota's Wildlife Action Plan 2015-2025

Describe how your program will advance the indicators identified in the plans selected:

Once secured, conservation easements will protect in perpetuity the important shoreland, headwaters and associated upland habitats adjacent to some of Minnesota's premier aquatic resources. Habitat management plans will be developed and provided to the landowners for use in enhancing and maintaining each protected parcel's important habitat. Protection of these critical habitats advances a primary goal identified by the Minnesota Wildlife Action Plan through stabilization of SGCN. Protection and stewardship of private forest lands, wetlands, and grasslands will promote conservation of natural lands, fisheries, and wildlife as a priority statewide action identified in the DNR Strategic Conservation Agenda.

Which LSOHC section priorities are addressed in this proposal?

Northern Forest

- Protect shoreland and restore or enhance critical habitat on wild rice lakes, shallow lakes, cold water lakes, streams and rivers, and spawning areas

Describe how your program will produce and demonstrate a significant and permanent conservation legacy and/or outcomes for fish, game, and wildlife as indicated in the LSOHC priorities:

Our Lakes of Outstanding Biological Significance Program focuses on protecting some of the most important recreational and sport fisheries resources in Minnesota and helps preserve this state’s proud angler heritage. When many residents endorsed the Legacy Amendment, they indicated a strong interest in seeing our water resources protected. This program takes a science based and targeted approach to protecting Northern Minnesota’s LOBS.

Unique plant or animal presence, or combination thereof, is the primary measure of a lake's biological significance. Lakes are rated and grouped for each of the following communities: aquatic plants, fish, birds, and amphibians. As a result, our protection strategies for each priority lake will be tailored towards the unique plant and animal community presence that determined a lake’s outstanding score. For example, for a lake ranked highly because of its outstanding fishery, a greater emphasis may be on watershed protection, targeting a 75% protection goal. Alternatively, a high score for aquatic plant or bird communities may drive a more shoreland-oriented focus.

This program will secure permanent conservation easement and fee title acquisitions on priority lands that serve to build complexes of protected habitat. This will enhance the State's prior investments in habitat protection and leave a larger, lasting legacy. Our program cultivates a high conservation ethic and develops effective tools for landowners to protect their land and waters. It also creates a great shared responsibility essential to maximizing our investment to achieve our targeted protection goals.

What other fund may contribute to this proposal?

- N/A

Does this proposal include leveraged funding?

Yes

Explain the leverage:

The Minnesota Land Trust encourages landowners to fully or partially donate the value of conservation easements. The leverage portion of the easement acquisition line item (\$1,000,000) is a conservative estimate of value we expect to see donated by landowners participating in the program. Northern Waters Land Trust expects \$236,500 in leverage through landowners and lake associations.

Per MS 97A.056, Subd. 24, Please explain whether the request is supplanting or is a substitution for any previous funding that was not from a legacy fund and was used for the same purpose.

This request is not supplanting or substituting for any previous funding. This is entirely new work.

How will you sustain and/or maintain this work after the Outdoor Heritage Funds are expended?

The land protected through conservation easements will be sustained through the best standards and practices for conservation easement stewardship. The Minnesota Land Trust is a nationally-accredited and insured land trust with a very successful stewardship

program that includes annual property monitoring, effective records management, addressing inquiries and interpretations, tracking changes in ownership, investigating potential violations and defending the easement in

case of a true violation. Funding for these

easement stewardship activities is included in the project budget.

In addition, the Land Trust prepares for each landowner a habitat management plan that provides recommendations for use in ecologically managing the property over time. The Land Trust actively encourages landowners to manage their properties in line with

the conservation easement, and works with landowners to address any financial or informational obstacles that stand in the way of them doing so.

Actions to Maintain Project Outcomes

Year	Source of Funds	Step 1	Step 2	Step 3
2028 and in perpetuity	MLT Long-Term Stewardship and Enforcement Fund	Annual monitoring of all easement projects	Enforcement as necessary	-

Identify indicator species and associated quantities this habitat will typically support:

DNR staff, in consultation with a variety of experts in NGOs and other agencies, have compiled a select group of species and associated quantities to be used as indicators. The metrics are derived from existing data sources and/or scientific literature but are necessarily gross averages; they are not accurate at a site-specific scale. Therefore, they are not intended to be used to score or rank requests, but represent the best information we have for immediate support to the Council’s objective.

1. Forests

Two species have been identified to represent various forest habitats:

Ovenbird: Found in relatively mature forest but can also be found in younger forests. While territories vary in size and may overlap, an average of 16 pairs for every 40 acres may be expected.

Golden-winged Warbler: Often associated with shrubland habitat and regenerating forests, a variety of forest habitats are required (a matrix of shrubby wetlands and uplands, regenerating forests, and mature forests). While territories vary in size, roughly 6 pairs for every 40 acres may be expected.

2. Aquatic Species

The information below is based on general averages for potential aquatic indicator species in Minnesota, and does not capture the variability inherent in populations of fish and mussels. Natural populations, including healthy populations with good habitat, vary among locations, and also rise and fall within lakes and rivers.

Trout: 40 lbs per acre.

Lakes: Walleye (2 adults/acre); Muskie (0.2 adults/acre); Northern Pike (10 adults/acre).

How will the program directly involve, engage, and benefit BIPOC (Black, Indigenous, People of Color) and diverse communities:

One of the Minnesota Land Trust’s core public values is a commitment to diversity, equity, and inclusion. We have been engaged in a multi-year-long process to assess how the conservation community—and the Minnesota Land Trust in particular—can better address these issues. To date, we have demonstrated this commitment when possible given the funding parameters and our unique role in working with private landowners, including numerous projects to protect the camps and nature centers that serve a diversity of Minnesota youth and a long-term partnership with the Fond du Lac Band of Lake Superior Chippewa on wild rice restoration.

Going forward, we intend to build on this engagement by using diversity, equity, and inclusion as a lens in project, partner, and contractor selection. In each of our program areas, we intend to listen and seek out potential, authentic partnerships that can advance our goals of conserving the best of Minnesota’s remaining habitats and, at the same time, being a more inclusive organization.

One related program we just recently launched is the “Ambassador Lands Program” which connects willing conservation landowners to diverse community groups that desire access to private land for a variety of programming purposes, such as youth mentor hunts, cultural or ceremonial use, conservation employment training, nature-based education, and much more. This would add greatly to the more universal public benefits of conserved lands such as wildlife habitat, clean water, and climate mitigation. Finally, we welcome more conversations with the LSOHC and conservation community about how these values can be better manifest in all our shared work going forward.

Activity Details

Requirements

If funded, this proposal will meet all applicable criteria set forth in MS 97A.056?

Yes

Will county board or other local government approval be formally sought prior to acquisition, per 97A.056 subd 13(j)?**

Yes

Is the land you plan to acquire (fee title) free of any other permanent protection?

Yes

Is the land you plan to acquire (easement) free of any other permanent protection?

Yes

Land Use

Will there be planting of any crop on OHF land purchased or restored in this program?

No

Is this land currently open for hunting and fishing?

No

Will the land be open for hunting and fishing after completion?

Yes

Describe any variation from the State of Minnesota regulations:

All fee title acquisitions conveyed to a public agency will be open to hunting and fishing.

Will the eased land be open for public use?

No

Are there currently trails or roads on any of the proposed acquisitions?

Yes

Describe the types of trails or roads and the allowable uses:

Most conservation easements are established on private lands, many of which have driveways, field roads and trails located on them. Often, these established trails and roads are permitted in the terms of the easement and can be maintained for personal use if their use does not significantly impact the conservation values of the property. Creation of new roads/trails or expansion of existing ones is typically not allowed.

Will the trails or roads remain and uses continue to be allowed after OHF acquisition?

Yes

How will maintenance and monitoring be accomplished?

Existing trails and roads are identified in the project baseline report and will be monitored annually as part of the Land Trust's stewardship and enforcement protocols. Maintenance of permitted roads/trails in line with the terms of the easement will be the

responsibility of the landowner.

Will new trails or roads be developed or improved as a result of the OHF acquisition?

No

Will the land that you acquire (fee or easement) be restored or enhanced within this proposal's funding and availability?

Yes

Other OHF Appropriation Awards

Have you received OHF dollars in the past through LSOHC?

Yes

Approp Year	Approp Amount Received	Amount Spent to Date	Leverage Reported in AP	Leverage Realized to Date	Acres Affected in AP	Acres Affected to Date	Complete/Final Report Approved?
2021	\$1,477,000	\$64,000	\$180,000	-	216	0	No
2018	\$1,094,000	\$939,300	\$165,000	\$91,700	225	268	No
2017	\$1,700,000	\$129,600	\$230,000	\$312,300	330	1,127	No
2015	\$1,690,000	\$1,612,500	-	\$2,490,500	1,000	643	Yes
2013	\$820,000	\$742,200	-	\$939,400	700	911	Yes
2010	\$816,000	\$692,900	-	\$2,589,040	1,000	1,330	Yes

Timeline

Activity Name	Estimated Completion Date
Acquire conservation easements: 1) identify priority landowners, 2) negotiate, draft and complete easements, and 3) dedicate funds for long-term stewardship.	June 30, 2027
Protection of 540 acres via fee acquisition; conveyance to Minnesota DNR.	June 2027

Budget

Grand Totals Across All Partnerships

Item	Funding Request	Antic. Leverage	Leverage Source	Total
Personnel	\$387,000	-	-	\$387,000
Contracts	\$82,000	-	-	\$82,000
Fee Acquisition w/ PILT	\$2,365,000	\$236,500	Landowners; Lake Associations	\$2,601,500
Fee Acquisition w/o PILT	-	-	-	-
Easement Acquisition	\$5,000,000	\$1,000,000	-, Landowners	\$6,000,000
Easement Stewardship	\$288,000	-	-	\$288,000
Travel	\$35,000	-	-	\$35,000
Professional Services	\$647,000	-	-	\$647,000
Direct Support Services	\$257,000	-	-	\$257,000
DNR Land Acquisition Costs	\$48,000	-	-	\$48,000
Capital Equipment	-	-	-	-
Other Equipment/Tools	\$2,000	-	-	\$2,000
Supplies/Materials	\$4,000	-	-	\$4,000
DNR IDP	\$110,000	-	-	\$110,000
Grand Total	\$9,225,000	\$1,236,500	-	\$10,461,500

Partner: Minnesota Land Trust

Totals

Item	Funding Request	Antic. Leverage	Leverage Source	Total
Personnel	\$280,000	-	-	\$280,000
Contracts	\$82,000	-	-	\$82,000
Fee Acquisition w/ PILT	-	-	-	-
Fee Acquisition w/o PILT	-	-	-	-
Easement Acquisition	\$5,000,000	\$1,000,000	Landowners	\$6,000,000
Easement Stewardship	\$288,000	-	-	\$288,000
Travel	\$15,000	-	-	\$15,000
Professional Services	\$326,000	-	-	\$326,000
Direct Support Services	\$76,000	-	-	\$76,000
DNR Land Acquisition Costs	-	-	-	-
Capital Equipment	-	-	-	-
Other Equipment/Tools	\$2,000	-	-	\$2,000
Supplies/Materials	-	-	-	-
DNR IDP	-	-	-	-
Grand Total	\$6,069,000	\$1,000,000	-	\$7,069,000

Personnel

Position	Annual FTE	Years Working	Funding Request	Antic. Leverage	Leverage Source	Total
MLT Land Protection Staff	0.7	4.0	\$280,000	-	-	\$280,000

Partner: Northern Waters Land Trust

Totals

Item	Funding Request	Antic. Leverage	Leverage Source	Total
Personnel	\$107,000	-	-	\$107,000
Contracts	-	-	-	-
Fee Acquisition w/ PILT	\$2,365,000	\$236,500	Landowners; Lake Associations	\$2,601,500
Fee Acquisition w/o PILT	-	-	-	-
Easement Acquisition	-	-	-	-
Easement Stewardship	-	-	-	-
Travel	\$20,000	-	-	\$20,000
Professional Services	\$321,000	-	-	\$321,000
Direct Support Services	\$181,000	-	-	\$181,000
DNR Land Acquisition Costs	\$48,000	-	-	\$48,000
Capital Equipment	-	-	-	-
Other Equipment/Tools	-	-	-	-
Supplies/Materials	\$4,000	-	-	\$4,000
DNR IDP	\$110,000	-	-	\$110,000
Grand Total	\$3,156,000	\$236,500	-	\$3,392,500

Personnel

Position	Annual FTE	Years Working	Funding Request	Antic. Leverage	Leverage Source	Total
NWLT Land Protection Staff	0.5	4.0	\$107,000	-	-	\$107,000

Amount of Request: \$9,225,000

Amount of Leverage: \$1,236,500

Leverage as a percent of the Request: 13.4%

DSS + Personnel: \$644,000

As a % of the total request: 6.98%

Easement Stewardship: \$288,000

As a % of the Easement Acquisition: 5.76%

Describe and explain leverage source and confirmation of funds:

The Land Trust encourages landowners to fully or partially donate the value of conservation easements. The leverage portion of the easement acquisition line item is a conservative estimate of value we expect to see donated to the Land Trust.

Does this proposal have the ability to be scalable?

Yes

If the project received 70% of the requested funding

Describe how the scaling would affect acres/activities and if not proportionately reduced, why?

Outputs would be reduced by 30-40 percent. With this reduction, NWLT expects that it would secure 6-7 priority parcels in fee title acquisition, totaling to 378 acres protected. MLT's reduction in budget would

result in a somewhat less than proportionate reduction in conservation easement acres (see also response below).

Describe how personnel and DSS expenses would be adjusted and if not proportionately reduced, why?

Personnel and DSS will be reduced, but less than proportional. Some costs are fixed (landowner recruitment; grant management) and must occur regardless of grant amount. Projects can fail midstream after investment of time. Donation of easement value (high in this program) can inflate the number of projects pursued/completed.

If the project received 50% of the requested funding

Describe how the scaling would affect acres/activities and if not proportionately reduced, why?

Outputs would be reduced by 50-60%. With this reduction, NWLT ensures that it would secure 4-5 priority parcel in fee title acquisition, totaling to 270 acres protected. MLT's budget would result in a somewhat less than proportionate amount of conservation easement acres (see also response below).

Describe how personnel and DSS expenses would be adjusted and if not proportionately reduced, why?

Personnel and DSS will be reduced, but less than proportional. Some costs are fixed (landowner recruitment; grant management) and must occur regardless of grant amount. Projects can fail midstream after investment of time. Donation of easement value (high in this program) can inflate the number of projects pursued/completed.

Personnel

Has funding for these positions been requested in the past?

Yes

Please explain the overlap of past and future staffing and position levels previously received and how that is coordinated over multiple years?

MLT - FTEs listed in the proposal are a coarse estimate of the personnel time required to deliver the grant outputs included in this proposal. An array of staff may work on projects to complete legal review, sub-contracts, negotiating with landowners, drafting conservation easements, completing baseline reports and managing the grant. MLT's basis for billing is the individual protection project we work on, ensuring allocation to the appropriate grant award. And by using a timesheet-based approach we use only those personnel funds actually expended to achieve the goals of the grant.

NWLT estimates the personnel costs for fee title acquisition, conservation easement outreach and grant administration activities to accomplish the specific outcomes for each grant.

Contracts

What is included in the contracts line?

MLT - Funds in the contract line are for the writing of habitat management plans via qualified vendors, outreach to landowners through SWCDs and other local partners, and posting of easement boundaries.

Fee Acquisition

What is the anticipated number of fee title acquisition transactions?

Easement Stewardship

What is the number of easements anticipated, cost per easement for stewardship, and explain how that amount is calculated?

The average cost per easement to fund the Minnesota Land Trust's perpetual monitoring and enforcement obligations is \$24,000, although in extraordinary circumstances a larger amount may be warranted. This figure is derived from MLT's detailed stewardship funding "cost analysis" which is consistent with Land Trust Accreditation standards. MLT shares periodic updates to this cost analysis with LSOHC staff.

Travel

Does the amount in the travel line include equipment/vehicle rental?

Yes

Explain the amount in the travel line outside of traditional travel costs of mileage, food, and lodging

Minnesota Land Trust staff regularly rent vehicles for grant-related purposes, which is a significant cost savings over use of personal vehicles.

I understand and agree that lodging, meals, and mileage must comply with the current MMB Commissioner Plan:

Yes

Direct Support Services

How did you determine which portions of the Direct Support Services of your shared support services is direct to this program?

MLT - In a process that was approved by the DNR on March 17, 2017, Minnesota Land Trust determined our direct support services rate to include all of the allowable direct and necessary expenditures that are not captured in other line items in the budget, which is similar to the Land Trust's proposed federal indirect rate. We will apply this DNR-approved rate only to personnel expenses to determine the total amount of direct support services.

NWLT - In a process approved by MNDNR on September 13 2021, Northern Waters Land Trust used a simplified allocation methodology that resulted in MNDNR approving an indirect rate of allowable expenses. NWLT anticipates a similar rate for this proposal.

Other Equipment/Tools

Give examples of the types of Equipment and Tools that will be purchased?

GPS units, field safety gear, etc.

Federal Funds

Do you anticipate federal funds as a match for this program?

No

Output Tables

Acres by Resource Type (Table 1)

Type	Wetland	Prairie	Forest	Habitat	Total Acres
Restore	0	0	0	0	0
Protect in Fee with State PILT Liability	0	0	540	0	540
Protect in Fee w/o State PILT Liability	0	0	0	0	0
Protect in Easement	0	0	0	960	960
Enhance	0	0	0	0	0
Total	0	0	540	960	1,500

Total Requested Funding by Resource Type (Table 2)

Type	Wetland	Prairie	Forest	Habitat	Total Funding
Restore	-	-	-	-	-
Protect in Fee with State PILT Liability	-	-	\$3,050,000	-	\$3,050,000
Protect in Fee w/o State PILT Liability	-	-	-	-	-
Protect in Easement	-	-	-	\$6,175,000	\$6,175,000
Enhance	-	-	-	-	-
Total	-	-	\$3,050,000	\$6,175,000	\$9,225,000

Acres within each Ecological Section (Table 3)

Type	Metro/Urban	Forest/Prairie	SE Forest	Prairie	N. Forest	Total Acres
Restore	0	0	0	0	0	0
Protect in Fee with State PILT Liability	0	0	0	0	540	540
Protect in Fee w/o State PILT Liability	0	0	0	0	0	0
Protect in Easement	0	0	0	0	960	960
Enhance	0	0	0	0	0	0
Total	0	0	0	0	1,500	1,500

Total Requested Funding within each Ecological Section (Table 4)

Type	Metro/Urban	Forest/Prairie	SE Forest	Prairie	N. Forest	Total Funding
Restore	-	-	-	-	-	-
Protect in Fee with State PILT Liability	-	-	-	-	\$3,050,000	\$3,050,000
Protect in Fee w/o State PILT Liability	-	-	-	-	-	-
Protect in Easement	-	-	-	-	\$6,175,000	\$6,175,000
Enhance	-	-	-	-	-	-
Total	-	-	-	-	\$9,225,000	\$9,225,000

Average Cost per Acre by Resource Type (Table 5)

Type	Wetland	Prairie	Forest	Habitat
Restore	-	-	-	-
Protect in Fee with State PILT Liability	-	-	\$5,648	-
Protect in Fee w/o State PILT Liability	-	-	-	-
Protect in Easement	-	-	-	\$6,432
Enhance	-	-	-	-

Average Cost per Acre by Ecological Section (Table 6)

Type	Metro/Urban	Forest/Prairie	SE Forest	Prairie	N. Forest
Restore	-	-	-	-	-
Protect in Fee with State PILT Liability	-	-	-	-	\$5,648

Protect in Fee w/o State PILT Liability	-	-	-	-	-
Protect in Easement	-	-	-	-	\$6,432
Enhance	-	-	-	-	-

Target Lake/Stream/River Feet or Miles

6 miles

Outcomes

Programs in the northern forest region:

- Healthy populations of endangered, threatened, and special concern species as well as more common species ~ *Shorelands are protected from development and fragmentation. This program will permanently protect 1,500 acres of the most biologically outstanding shoreland in northern Minnesota and approximately 6 miles of undeveloped shoreline. Measure: Acres protected.*

Parcels

Sign-up Criteria?

[Yes](#)

Explain the process used to identify, prioritize, and select the parcels on your list:

Solicitation for potential projects employs a diverse strategy of direct outreach to landowners in high priority conservation areas and coordinated outreach with conservation partners including lake associations, Soil and Water Conservation Districts, and others. Leads for potential projects are pursued following initial assessment and scoring against criteria identified in established conservation plans. Criteria based scoring systems provide a standardized set of data from which multiple projects can be compared relative to each other and individual projects can be compared against a baseline. Scoring systems are a set of data, not a final, complete decision making tool. Local expertise and experience, programmatic goals, timelines, available resources, capacity, and other more subjective factors might also come into play in project selection and decision making.

The attached scoresheet provides an approach to criteria based scoring that considers: 1) Ecological Integrity/Viability as current status; 2) Threat/Urgency as a future scenario if protection is not afforded; and 3) Cost reflecting the overall value realized through the acquisition of a conservation easement (including a reflection of donative value). Ecological Integrity weights property size, condition, and context equally (at least as an initial starting point). The three primary factors, when taken together, provide a good estimate of long-term viability for biodiversity at the site: 1) Size of the parcel to be protected, 2) Condition of the habitat on the parcel, and 3) its Landscape context (both from a protection and ecological standpoint).

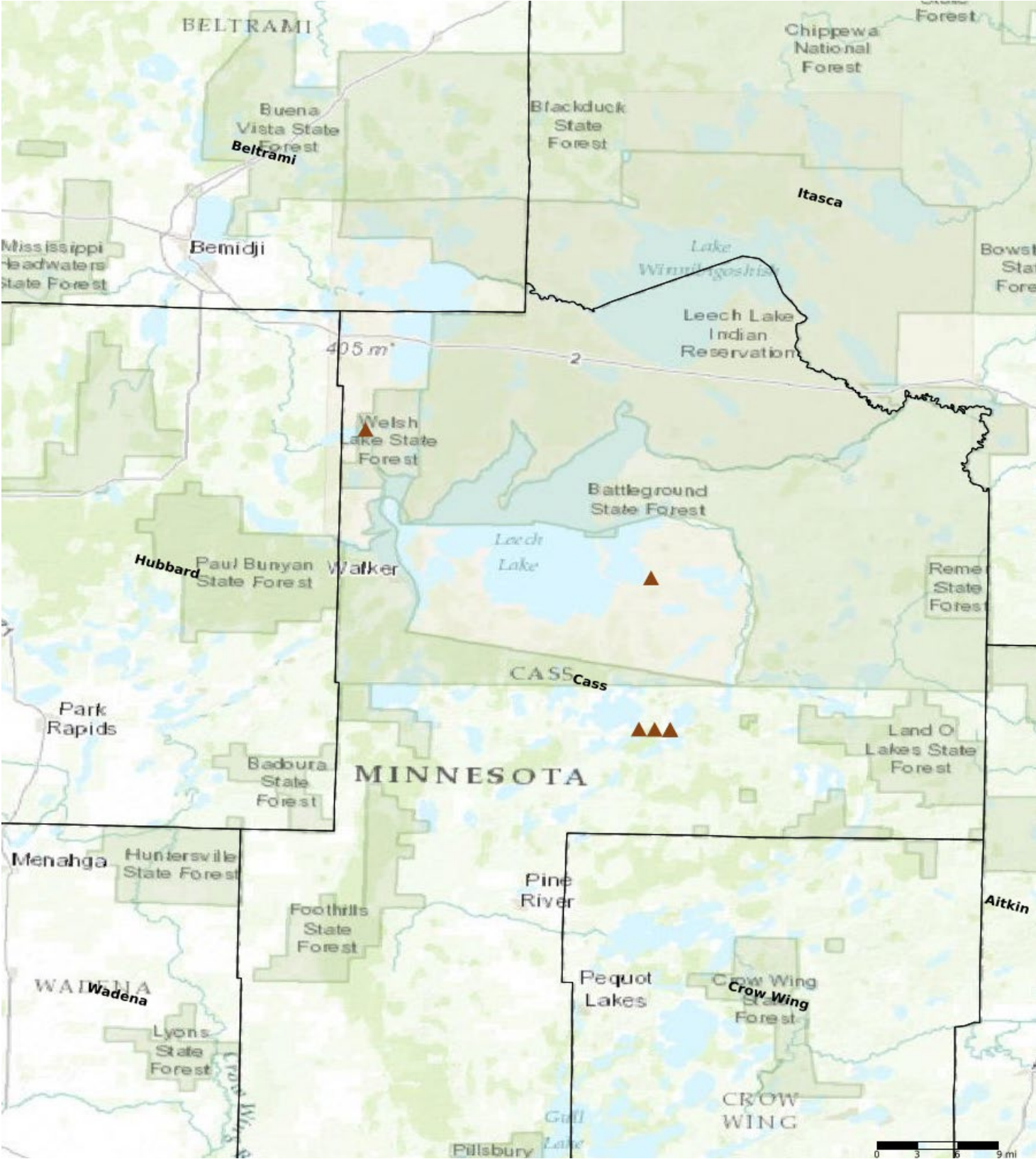
Protect Parcels

Name	County	TRDS	Acres	Est Cost	Existing Protection
Leech Lake Bluetow	Cass	14228221	48	-	No
Lake Louise 3	Cass	14028221	41	-	No

Protect Parcels with Buildings

Name	County	TRDS	Acres	Est Cost	Existing Protection	Buildings	Value of Buildings
Steamboat Lake Watershed	Cass	14431220	23	-	No	3	\$9,300
Lake Louise 4	Cass	14028222	84	-	No	1	\$0
Lake Louise 2	Cass	14028222	33	-	No	1	\$1,000
Lake Louise 1	Cass	14028220	20	-	No	1	\$0

Parcel Map



- Protect in Easement
- ▲ Protect in Fee with PILT
- Protect in Fee W/O PILT
- ★ Restore
- ✦ Enhance
- ✦ Other



Protecting Minnesota's Lakes of Outstanding Biological Significance

Phase 2



Paul Raymaker

Request \$9,225,000

Leverage \$1,236,500

Acres protected 1,500

Conservation easements 960

Protect in Fee with State PILT Liability 540

For more information:

Wayne Ostlie

Director of Land Protection
Minnesota Land Trust
651-917-6292
wostlie@mnland.org

This program will bring focused conservation to one of Minnesota's priority aquatic resources: Lakes of Outstanding Biological Significance. Through this proposal, the Minnesota Land Trust and the Northern Waters Land Trust will protect 1,500 acres of habitat (960 acres via perpetual conservation easements and 540 via acres fee title acquisition) and six miles of shoreland associated with the top 10% of these lakes in northeast and northcentral Minnesota.

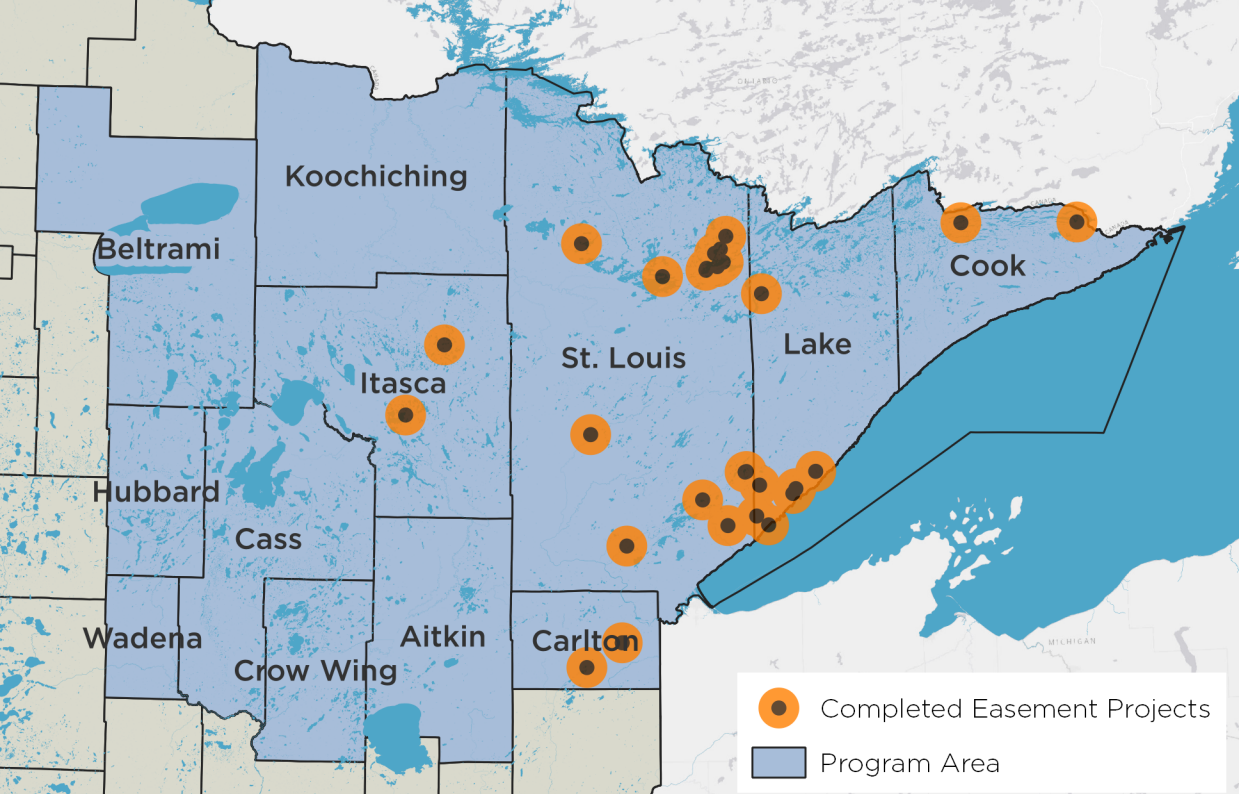
This program will preserve critical shoreland and associated upland habitats within the watersheds of a prioritized subset of Minnesota's Lakes of Outstanding Biological Significance in northeast and north-central Minnesota that are essential to maintaining healthy populations of the region's fish and wildlife populations.

How Does the Program Support State Goals?

This program will address a noted protection gap associated with these priority lakes, and afford a level of protection to some of the state's highest quality game and non-game fisheries. Numerous plans have identified the protection of these habitats as a conservation priority for Minnesota, including the *Minnesota Wildlife Action Plan*, *DNR Aquatic Management Area program*, the *State Conservation and Preservation Plan*, *DNR Strategic Conservation Agenda*, and *Outdoor Heritage Fund: A 25 Year Framework*.

What Are the Outcomes?

- Healthy wetland habitat complexes and associated populations of waterfowl, upland birds, and Species in Greatest Conservation Need.
- Improved water quality.
- Increased participation of private landowners in habitat projects.
- Enhancement of prior public investment in wetland protection and restoration.



**MINNESOTA
LAND TRUST**

Contact Us

Minnesota Land Trust
2356 University Ave. W.
Suite 240
St. Paul, MN 55114
(651) 647-9590
mnland@mnland.org
www.mnland.org

What has Been Accomplished to Date?

The Minnesota Land Trust has been protecting properties in the program area for many years through our related Critical Shorelands program.

Complete

(Critical Shorelands Phases I – III):

Completed 21 conservation easements protecting 2,884 acres of habitat and 18.6 miles of shoreline.

In Progress (Critical Shorelands Phases IV & V, Lakes of Outstanding Biological Significance, Phase 1):

9 conservation easements have been completed protecting 1,395 acres of habitat and 11 miles of shoreline.



Paul Raymaker

The Critical Shorelands Program has generated considerable awareness and interest among landowners in protecting these places. Landowners have collectively contributed over \$6.4 million in easement value as leverage to the \$7.6 million investment from the Outdoor Heritage Fund.



Contact Us

Northern Waters
Land Trust
800 Minnesota Ave. W
PO Box 124
Walker, MN 56484
(218) 547-4510
info@nwl-t-mn.org

northernwaterslandtrust.org



MINNESOTA LAND TRUST

A Decision Support Tool for Prioritizing Conservation Easement Opportunities

The Minnesota Land Trust often employs within its conservation program areas an RFP (Request for Proposals) model to both identify high-quality projects and introduce a level of competition into the easement acquisition process. Below, we briefly discuss how the system works and the framework put in place to sort the varied opportunities that come before us.

How the Ranking System Works

The parcel ranking framework employed through the Minnesota Land Trust's RFP process is intended as a **decision support tool** to aid in identifying, among the slate of landowners submitting bids for conservation easements, the most ecologically significant opportunities for the price. Using this framework, the Land Trust and its partners use an array of weighted data sets tailored to the specific circumstances inherent in a program area to identify those worthy of consideration.

It is important to note that this parcel ranking framework enables the Land Trust to rank projects *relative* to one another. That's important to do, but it's also important to understand how a project (or suite of projects) relates to the ideal situation (i.e., a project that is of exceptional size, condition and superb landscape context). If, for example, an RFP generated 20 proposals in a program area, the framework would effectively sift among them and identify the relatively good from those relatively bad. However, this information alone would not determine whether any of those parcels were of sufficient quality to pursue for protection (all may be of insufficient quality to warrant expenditure of funds). To solve this problem and make sure ranked projects are high priorities for conservation, we step back and evaluate them relative to the ideal - i.e., is each project among the best opportunities for conservation we can expect to find in the program area?

As part of its proposals to LSOHC, the Land Trust included easement sign-up criteria that laid out at a general level the framework utilized by the organization. Below is a more detailed description of the process the Land Trust utilizes in ranking potential parcels relative to one another, and identifying those with which a conservation easement will be pursued. We also include a ranking form illustrating the representative weighting applied to each criteria. These weightings will be refined as we move forward in applying this approach in each program area.

The Framework

We evaluate potential projects based on two primary factors: ecological significance and cost. Both are assessed independent of one another.

Factor 1: Ecological Significance

The Ecological Significance score is determined by looking at 3 subfactors, each weighted equally (as a default). Each of these constitutes 1/3 of the total ecological significance score.

Subfactors:

- **Size or Quantity** – the area of the parcel to be protected (how big is it?), length of shoreline, etc. The bigger the better.
- **Condition or Quality** – the condition of the natural communities and/or target species found on a parcel. The higher quality the better.
- **Landscape Context** – what’s around the parcel, both ecologically and from a protected status standpoint. The more ecologically intact the surrounding landscape the better; the extent to which a parcel builds off of other protected lands to form complexes or corridors, the better.

Note that we have the ability to emphasize one subfactor over another if the specific circumstances warrant it, but we begin with a default standard at the onset. At present, all of our geographies are using the default standard.

Indicators:

A suite of weighted indicators is used to score each parcel relative to each of the above subfactors. Indicators are selected based on their ability to effectively inform the scoring of parcels relative to each of the respective subfactors. Weightings for each criterion are assessed and vetted to ensure that a set of indicators for each subfactor produces meaningful results, then applied across each of the proposed parcels. Finally, we vet and make improvements to the scoring matrix when we identify issues or circumstances where results seem erroneous.

Data sets used for this purpose must offer wall-to-wall coverage across the program area to ensure that bias for or against parcels does not creep into the equation. Where gaps in such coverages exist, we attempt to fill them in to the extent feasible (via field inventory, etc.). Finally, we vet and make improvements to the scoring matrix when we identify issues or circumstances where results seem erroneous.

Factor 2: Cost

Cost is a second major factor used in our consideration of parcels. Although ecological significance is *the* primary factor in determining the merits of a project, our RFP programs also strive to make the greatest conservation impact with the most efficient use of State funds. As such, we look at the overall cost of each project relative to its ecological significance; we also ask landowners to consider donating all or some of their easement value to the cause and to better position their proposals. Many landowners participate in that fashion.

Cost, as a primary factor, is assessed independently of the ecological factors. Given equal ecological significance, a project of lower cost will be elevated over those of higher cost in the ranking. That said, exceptionally high quality projects are likely to be pursued even if no or modest landowner donation is put forward. Alternatively, there are projects offered as full donations that are not moved forward because their ecological significance is not acceptable. The degree to which cost factors into the ranking of parcels relative to one another is made on a case-by-case basis.

MINNESOTA LAND TRUST Lakes of Outstanding Biological Significance Conservation Easement Selection Worksheet		SITE 1	SITE 2	SITE 3	SITE 4	SITE 5	SITE 6	SITE 7	SITE 8	SITE 9	SITE 10	SITE 11	SITE 12	Notes
COUNTY														
100 Pts	ECOLOGICAL SIGNIFICANCE													
Weighting Factor	Size/Abundance of Habitat (33 points)													
	a) Size (33 pts): Acres of Habitat to be Protected by an Easement													
	SUBTOTAL:	0	0	0	0	0	0	0	0	0	0	0	0	0
Weighting Factor	Quality of Natural Resources to be Protected by the Easement (33 points)													
	a) Habitat Quality (28 pts): Quality of Existing Ecological Systems (Terrestrial & Aquatic)													
	b) Imperiled Species (5 pts): Occurrence of Documented Rare Species on Parcel													
	SUBTOTAL:	0	0	0	0	0	0	0	0	0	0	0	0	0
Weighting Factor	Landscape Context (34 points)													
	Current Status (30 points)													
	a) Protection Context (15 points)													
	i. Size of Contiguous Protected Lands (8 pts)													
	ii. Amount of Protected Lands within 3 miles of Property													
	: Protected Land within 0.5 miles of Property (4 pts)													
	: Protected Land 0.5-3 miles from Property (3 pts)													
	b) Ecological Context (15 points)													
	i. Size of Contiguous Ecological Habitat (8 pts)													
	ii. Amount of Ecological Habitat within 3 miles of Property													
	: Ecological Habitat within 0.5 miles of Property (4 pts)													
	: Ecological Habitat 0.5-3 miles from Property (3 pts)													
	Future Potential (4 points)													
	a) Conservation Plan Context (2 pts)													
	b) Amount of Existing Activity (2 pts)													
	SUBTOTAL:	0	0	0	0	0	0	0	0	0	0	0	0	0
	TOTAL ECOLOGICAL VALUE POINTS	0	0	0	0	0	0	0	0	0	0	0	0	0
COST														
	i. Bid amount (\$)/acre	\$ -	\$ -	\$ -	\$ -	\$ -	\$ -	\$ -	\$ -	\$ -	\$ -	\$ -	\$ -	\$ -
	ii. Estimated donative value (\$)/acre	\$ -	\$ -	\$ -	\$ -	\$ -	\$ -	\$ -	\$ -	\$ -	\$ -	\$ -	\$ -	\$ -
	TOTAL ACQUISITION COST (\$)	\$ -	\$ -	\$ -	\$ -	\$ -	\$ -	\$ -	\$ -	\$ -	\$ -	\$ -	\$ -	\$ -

KEY	
	Priority
	Possible
	Out