



## Lessard-Sams Outdoor Heritage Council

### Cannon River Watershed Habitat Restoration and Protection Program - Phase 12 Laws of Minnesota 2023 Accomplishment Plan

#### General Information

**Date:** 06/08/2023

**Project Title:** Cannon River Watershed Habitat Restoration and Protection Program - Phase 12

**Funds Recommended:** \$2,981,000

**Legislative Citation:** ML 2023, Ch. 40, Art. 1, Sec. 2, subd. 5(n)

**Appropriation Language:** \$2,981,000 the first year is to the commissioner of natural resources for agreements to acquire lands in fee and restore and enhance wildlife habitat in the Cannon River watershed as follows: \$119,000 to Clean River Partners; \$994,000 to Great River Greening; and \$1,868,000 to Trust for Public Land. A list of proposed land acquisitions, restorations, and enhancements must be provided as part of the required accomplishment plan.

#### Manager Information

**Manager's Name:** Alan Kraus

**Title:** Conservation Program Manager

**Organization:** Clean River Partners

**Address:** 205 Water Street S Suite 1

**City:** Northfield, MN 55057

**Email:** alan@cleanriverpartners.org

**Office Number:** 507-786-3913

**Mobile Number:** 5077863913

**Fax Number:**

**Website:** <https://cleanriverpartners.org/>

#### Location Information

**County Location(s):** Goodhue, Waseca, Rice, Le Sueur and Steele.

**Eco regions in which work will take place:**

- Prairie
- Southeast Forest

**Activity types:**

- Protect in Fee

- Restore
- Enhance

**Priority resources addressed by activity:**

- Wetlands
- Prairie
- Forest
- Habitat

## Narrative

### Abstract

The Cannon River Watershed Habitat Protection and Restoration Program will protect approximately 290 acres in fee, and restore and enhance approximately 358 acres of high priority wildlife habitat within the Cannon River Watershed, including wetlands, prairies, forests, and river/shallow lake shoreline. Its goal is to protect existing high quality habitat, restore degraded habitat, prevent degradation of water quality, and provide public access.

### Design and Scope of Work

The Cannon River Watershed Habitat Protection and Restoration Program - Phase 12 will continue to protect, restore, and create public access opportunities to high-quality habitat lands throughout the Cannon River Watershed. It will increase the amount of restored habitat on public lands available for hunting and angling within an easy drive for over half of Minnesota's population.

Located south of the Twin Cities, the 1,460 square mile Cannon River Watershed includes over 800 linear miles of streams and rivers that drain a diverse landscape. This area has seen increased development pressure due to the transportation ease of the I-35 corridor and the attraction of the Cannon Lakes, and much of this area has already suffered fragmentation and habitat loss. Historically comprised of Big Woods habitat, the landscape is now dominated by agricultural fields and, to a lesser extent, urban development. Agricultural practices and shoreline development are the major contributors to the impaired status of stretches of the Cannon River and its associated lakes and streams.

Part of a multi-year, multi-partner strategy, this program streamlines the coordination of protecting and restoring targeted parcels of land that positively contribute to large complexes of forests, restored prairies, wetlands, lakeshore, and river shoreline. Since 1990, Clean River Partners has been the local expert of the watershed, and will coordinate this program, providing program administration and landowner outreach. Fee-title acquisitions led by The Trust for Public Land (TPL) will be targeted toward large wetland/upland complexes, rare biomes (Big Woods forest, tamarack swamp), shallow lakes, river shoreline, and lands adjacent to existing public land. TPL will convey lands to the DNR except when County ownership is appropriate. Ongoing partnerships are critical in identifying priority conservation opportunities and protection strategies for the existing high biodiversity areas.

Parcels targeted for restoration and enhancement will be evaluated by Great River Greening (GRG) in collaboration with MN DNR, County and SWCD personnel to determine existing and desired conditions for each site. Information gathered will be used to develop site specific work plans for restoring ecologically desired habitats. Project management plans will detail the methods, practices and a timeline for successful completion of each site/project. Practices could include invasive species removal, controlled burning, chemical treatment, reseeding and/or plug planting, tree stand thinning, wetland hydrology restoration, and shoreline revetments using native materials. Restorations and enhancements will be aimed at improving habitat and protecting water quality for the benefit of

all wildlife and human communities.

Properties targeted for fee-title acquisition and restoration can be found in the parcel list below.

In recent years, collaboration among partners has accelerated local awareness and created strong and growing interest in land protection and habitat restoration opportunities. Continuing our collaboration and building on this momentum, we seek to increase capacity to deliver permanent land protection and habitat improvement opportunities to protect well-connected functional forests, prairies, wetlands, lakeshores, and river shorelines that sustain and enhance native species and provides high quality outdoor recreation experiences.

### **How does the plan address habitats that have significant value for wildlife species of greatest conservation need, and/or threatened or endangered species, and list targeted species?**

The areas targeted by The Trust for Public Land have been identified and prioritized through state, regional and local natural resource plans due to their high biodiversity qualities and connectivity to existing public lands. Their protection will occur through fee title acquisition, and will target Big Woods, oak savannas, wetlands and sensitive shoreline communities within the Cannon River Watershed. Great River Greening will conduct significant habitat restoration and enhancement work on already permanently protected conservation lands identified by DNR and County staff within the watershed. The aim is to improve habitat values for wildlife and Species in Greatest Conservation Need (SGCN), including birds using the Mississippi River migratory corridor and pollinators. Work will restore and enhance riverine, forest, wetland, oak savanna, and prairie habitat at 9 conservation sites.

Protection, restoration and/or enhancement of these significant parcels will provide critical habitat for game species, including upland birds (dove, turkey, pheasant, and woodcock), white tail deer, migratory waterfowl (mallards, canvasback, wood ducks, hooded mergansers, pintails, and lesser scaup), and aquatic species critical for the protection of fish (trout, northern pike, black crappies, bluegills, and walleye). Protection will also provide access for a diversity of recreational experiences including duck, pheasant, turkey and deer hunting as well as river, stream, and lake fishing. The nongame wildlife, including species in Greatest Conservation Need, that also benefit from this effort includes Bald Eagle, Bell's Vireo, Cerulean Warbler, Loggerhead Shrike, Sandhill Crane, Red-headed Woodpecker, Greater Yellowlegs, Buffbreasted Sandpiper, Rusty Patched Bumble Bee, Blanding's Turtle, Wood Turtle, Mudpuppies, and the Giant Floater, a species of freshwater mussel.

### **Describe how the plan uses science-based targeting that leverages or expands corridors and complexes, reduces fragmentation or protects areas identified in the MN County Biological Survey:**

This program uses the Minnesota County Biological Survey, and several other GIS data analysis tools to identify priority lands for protection and restoration to create and expand conservation corridors and habitat complexes. In addition, we will consult several watershed-wide landscape planning efforts such as the Cannon River Watershed Landscape Stewardship Plan, the Cannon River Watershed - Watershed Restoration and Protection Strategies (WRAPS), and the Cannon River Watershed Comprehensive Management Plan approved by Minnesota's Board of Water and Soil Resources and ratified by the Cannon River Watershed Joint Powers Board.

### **Which two sections of the Minnesota Statewide Conservation and Preservation Plan are most applicable to this project?**

- H1 Protect priority land habitats
- H5 Restore land, wetlands and wetland-associated watersheds

## Which two other plans are addressed in this program?

- Minnesota's Wildlife Management Area Acquisition - The Next 50 Years
- Outdoor Heritage Fund: A 25 Year Framework

## Which LSOHC section priorities are addressed in this program?

### Prairie

- Protect, enhance, or restore existing wetland/upland complexes, or convert agricultural lands to new wetland/upland habitat complexes

### Southeast Forest

- Protect forest habitat through acquisition in fee or easement to prevent parcelization and fragmentation and to provide the ability to access and manage landlocked public properties

## Outcomes

### Programs in prairie region:

- Key core parcels are protected for fish, game and other wildlife ~ *Core parcels are identified in partnership with the DNR as well as the partners of the Cannon River Watershed Habitat Protection and Restoration Program. Success will be determined based on the acreage of lands protected and the percentage of protected lands in the watershed.*

### Programs in southeast forest region:

- High priority riparian lands, forestlands, and savannas are protected from parcelization and fragmentation ~ *Core parcels are identified in partnership with the DNR as well as the partners of the Cannon River Watershed Habitat Protection and Restoration Program . Success will be determined based on the acreage of lands protected and the percentage of protected lands in the watershed.*

## Does this program include leveraged funding?

Yes

### Explain the leverage:

A portion of Clean River Partners' DSS and all of Clean River Partners' travel costs and materials/supplies costs related to outreach are provided as privately sourced leverage for this proposal.

One-half of TPL's DSS costs and all of TPL's travel costs are provided as privately sourced leverage for this proposal. TPL will attempt to bring various state, local and private funds to acquire additional property and leverage the OHF grant, and will attempt to leverage fee acquisition with partial donations of the appraised value of protected parcels.

More than one-half of GRG's DSS costs are provided as privately sourced leverage for this proposal. GRG will attempt to bring various local and private funds to leverage the enhancement and restoration activities on protected parcels.

**Per MS 97A.056, Subd. 24, Please explain whether the request is supplanting or is a substitution for any previous funding that was not from a legacy fund and was used for the same purpose.**

This proposal does not substitute or supplant previous funding that was not from a Legacy fund.

### Non-OHF Appropriations

Year	Source	Amount
2013	RIM	\$200,000
2012	RIM	\$105,000
2012	ENTRF	\$200,000
2011	ENTRF	\$350,000

### How will you sustain and/or maintain this work after the Outdoor Heritage Funds are expended?

Once land has been acquired and conveyed to the DNR, initial site development and restoration of these lands will begin. Estimated costs for initial restoration or enhancement work are included in this proposal. The Trust for Public Land will work with DNR to complete a restoration or enhancement management plan, and implementation of that plan will be completed in the following years. These properties will be managed and maintained by the Minnesota DNR according to their guidelines.

In collaboration with MN DNR, County and SWCD personnel, parcels targeted for restoration will be evaluated by Great River Greening to determine existing and desired conditions for each site. Information gathered will be used to develop site-specific scope of work plans for restoring ecologically desired habitats. Project management plans will detail the methods and practices to be used and a timeline for successful completion of each site/project.

### Actions to Maintain Project Outcomes

Year	Source of Funds	Step 1	Step 2	Step 3
2026	GRG - OHF	Continue R/E and begin stewardship. Target actions to maintain habitat.	Restorative action to correct damage as needed	Evaluate progress and determine if additional actions are needed
2025	GRG - OHF	Initiate R/E work	Continue R/E depending on appropriate methods and time of year	Continue R/E and begin stewardship as needed using appropriate methods and dependent on time of year
2024	GRG - OHF	Perform site evaluation and assessment in collaboration with DNR	Develop R/E plan for property. Begin monitoring	Initiate site preparation from R/E work. Continue monitoring
2026	TPL - DNR	Restore and steward property for habitat and public recreation	-	-
2025	TPL - DNR	Develop restoration/management plan for property	Restore and steward property for habitat and public recreation	-
2024	TPL - OHF and DNR	Post property	Develop restoration/management plan for property	-

**Provide an assessment of how your program celebrates cultural diversity or reaches diverse communities in Minnesota, including reaching low- and moderate-income households:**

This program involves, engages, and benefits BIPOC and diverse communities through focused events that leverage Outdoor Heritage Funds. For example, recent efforts, funded through other sources, have focused on increasing the engagement of BIPOC and diverse communities across the watershed in volunteer events at sites protected and restored using past OHF appropriations. Additionally, also through different funding sources, some of this program's recent acquisition and restoration projects focus on protection of the environment and water quality while creating much-needed recreational opportunities targeting disadvantaged areas (based upon housing, income and wastewater thresholds) with significant BIPOC communities. For sites where restoration activities will take place a resource assessment occurs to ensure the preservation of important cultural resources. Our partners actively encourage residents who live near habitat restoration sites and create programs specifically for people from diverse backgrounds opening up opportunities to pursue environmental careers such as GRG's Future Stewards Program.

Protecting, restoring, and enhancing diverse and resilient habitat benefits all Minnesotans. It keeps our air and water cleaner, mitigates the impacts of climate change, and conserves the biological diversity that belongs to everyone. Public land provides an opportunity for recreation and health to those who do not have access to private natural lands, whether that be for hunting, fishing, hiking, or other outdoor pursuits.

Moving forward, we will continue our outreach to BIPOC communities and remain eager to expand this important work in a way that more directly, and authentically, engages diverse communities and partners in an equitable and just manner.

### Activity Details

#### Requirements

**If funded, this program will meet all applicable criteria set forth in MS 97A.056?**

Yes

**Will county board or other local government approval be formally sought\*\* prior to acquisition, per 97A.056 subd 13(j)?**

No

**Describe any measures to inform local governments of land acquisition under their jurisdiction:**

We will follow the County/Township Board notification processes as directed by the current statutory language.

**Is the land you plan to acquire (fee title) free of any other permanent protection?**

Yes

**Will restoration and enhancement work follow best management practices including MS 84.973 Pollinator Habitat Program?**

Yes

**Is the restoration and enhancement activity on permanently protected land per 97A.056, Subd 13(f), tribal lands, and/or public waters per MS 103G.005, Subd. 15 or on lands to be acquired in this program?**

Yes

**Where does the activity take place?**

- WMA
- SNA
- AMA
- Permanently Protected Conservation Easements
- County/Municipal
- State Forests

## Land Use

### Will there be planting of any crop on OHF land purchased or restored in this program?

Yes

#### Explain what will be planted:

For lands acquired that are conveyed as WMAs to the DNR, the DNR has indicated the following: The primary purposes of WMAs are to develop and manage for the production of wildlife and for compatible outdoor recreation. To fulfill those goals, the DNR may use limited farming specifically to enhance or benefit the management of state lands for wildlife. Lands proposed to be acquired as WMAs may utilize farming to prepare previously farmed sites for native plant seeding. This is a standard practice across the Midwest. On a small percentage of WMAs (less than 2.5%), DNR uses farming to provide a winter food source for a variety of wildlife species in agriculture-dominated landscapes largely devoid of winter food sources. In some cases this necessitates the use of GMO treated products to facilitate herbicide use in order to control weeds present in the seedbank, however, neonicotinoids will not be used.

### Is this land currently open for hunting and fishing?

No

### Will the land be open for hunting and fishing after completion?

Yes

#### Describe any variation from the State of Minnesota regulations:

NA

### Who will eventually own the fee title land?

- State of MN

### Land acquired in fee will be designated as a:

- WMA
- SNA
- AMA

### What is the anticipated number of closed acquisitions (range is fine) you plan to accomplish with this appropriation?

One to two acquisitions are expected to close under this appropriation.

### Are there currently trails or roads on any of the proposed acquisitions?

No

### Will new trails or roads be developed or improved as a result of the OHF acquisition?

No

**Will the acquired parcels be restored or enhanced within this appropriation?**

Yes

TPL - Some initial restoration will be conducted through release of IDP funds or through contracts.

**Will the land that you acquire (fee or easement) be restored or enhanced within this program's funding and availability?**

Yes

**Timeline**

Activity Name	Estimated Completion Date
Restoration and enhancement	June 30, 2028
Finalize restoration and enhancement plans	June 30, 2025
Initial site development	Fall 2029
Land acquired	June 30, 2027
Landowner negotiations, agreements and due diligence	June 30, 2026

**Date of Final Report Submission:** 11/01/2029

**Availability of Appropriation:** Subd. 7. Availability of Appropriation

(a) Money appropriated in this section may not be spent on activities unless they are directly related to and necessary for a specific appropriation and are specified in the accomplishment plan approved by the Lessard-Sams Outdoor Heritage Council. Money appropriated in this section must not be spent on indirect costs or other institutional overhead charges that are not directly related to and necessary for a specific appropriation. Money appropriated to acquire land in fee may be used to restore, enhance, and provide for public use of the land acquired with the appropriation. Public-use facilities must have a minimal impact on habitat in acquired lands.

(b) Money appropriated in this section is available as follows:

- (1) money appropriated for acquiring real property is available until June 30, 2027;
- (2) money appropriated for restoring and enhancing land acquired with an appropriation in this act is available for four years after the acquisition date with a maximum end date of June 30, 2031;
- (3) money appropriated for restoring or enhancing other land is available until June 30, 2028;
- (4) notwithstanding clauses (1) to (3), money appropriated for a project that receives at least 15 percent of its funding from federal funds is available until a date sufficient to match the availability of federal funding to a maximum of six years if the federal funding was confirmed and included in the original approved draft accomplishment plan; and
- (5) money appropriated for other projects is available until the end of the fiscal year in which it is appropriated.



**Budget**

*Budget reallocations up to 10% do not require an amendment to the Accomplishment Plan.*

**Grand Totals Across All Partnerships**

<b>Item</b>	<b>Funding Request</b>	<b>Leverage</b>	<b>Leverage Source</b>	<b>Total</b>
Personnel	\$280,000	-	-	\$280,000
Contracts	\$548,000	-	-	\$548,000
Fee Acquisition w/ PILT	\$1,721,000	-	-	\$1,721,000
Fee Acquisition w/o PILT	-	-	-	-
Easement Acquisition	-	-	-	-
Easement Stewardship	-	-	-	-
Travel	\$4,000	\$2,000	Private, Private	\$6,000
Professional Services	\$40,000	-	-	\$40,000
Direct Support Services	\$111,000	\$148,000	Private, Private, Private	\$259,000
DNR Land Acquisition Costs	-	-	-	-
Capital Equipment	-	-	-	-
Other Equipment/Tools	\$5,000	-	-	\$5,000
Supplies/Materials	\$272,000	\$1,000	Private	\$273,000
DNR IDP	-	-	-	-
<b>Grand Total</b>	<b>\$2,981,000</b>	<b>\$151,000</b>	-	<b>\$3,132,000</b>

**Partner: Great River Greening****Totals**

Item	Funding Request	Leverage	Leverage Source	Total
Personnel	\$114,000	-	-	\$114,000
Contracts	\$537,000	-	-	\$537,000
Fee Acquisition w/ PILT	-	-	-	-
Fee Acquisition w/o PILT	-	-	-	-
Easement Acquisition	-	-	-	-
Easement Stewardship	-	-	-	-
Travel	\$4,000	-	-	\$4,000
Professional Services	-	-	-	-
Direct Support Services	\$62,000	\$122,000	Private	\$184,000
DNR Land Acquisition Costs	-	-	-	-
Capital Equipment	-	-	-	-
Other Equipment/Tools	\$5,000	-	-	\$5,000
Supplies/Materials	\$272,000	-	-	\$272,000
DNR IDP	-	-	-	-
<b>Grand Total</b>	<b>\$994,000</b>	<b>\$122,000</b>	<b>-</b>	<b>\$1,116,000</b>

**Personnel**

Position	Annual FTE	Years Working	Funding Request	Leverage	Leverage Source	Total
Personnel	0.27	5.0	\$114,000	-	-	\$114,000

## Partner: Trust For Public Land

**Totals**

Item	Funding Request	Leverage	Leverage Source	Total
Personnel	\$75,000	-	-	\$75,000
Contracts	\$8,000	-	-	\$8,000
Fee Acquisition w/ PILT	\$1,721,000	-	-	\$1,721,000
Fee Acquisition w/o PILT	-	-	-	-
Easement Acquisition	-	-	-	-
Easement Stewardship	-	-	-	-
Travel	-	\$1,000	Private	\$1,000
Professional Services	\$40,000	-	-	\$40,000
Direct Support Services	\$24,000	\$24,000	Private	\$48,000
DNR Land Acquisition Costs	-	-	-	-
Capital Equipment	-	-	-	-
Other Equipment/Tools	-	-	-	-
Supplies/Materials	-	-	-	-
DNR IDP	-	-	-	-
<b>Grand Total</b>	<b>\$1,868,000</b>	<b>\$25,000</b>	-	<b>\$1,893,000</b>

**Personnel**

Position	Annual FTE	Years Working	Funding Request	Leverage	Leverage Source	Total
Protection and Legal Staff	0.14	3.0	\$75,000	-	-	\$75,000

**Partner: Clean River Partners****Totals**

Item	Funding Request	Leverage	Leverage Source	Total
Personnel	\$91,000	-	-	\$91,000
Contracts	\$3,000	-	-	\$3,000
Fee Acquisition w/ PILT	-	-	-	-
Fee Acquisition w/o PILT	-	-	-	-
Easement Acquisition	-	-	-	-
Easement Stewardship	-	-	-	-
Travel	-	\$1,000	Private	\$1,000
Professional Services	-	-	-	-
Direct Support Services	\$25,000	\$2,000	Private	\$27,000
DNR Land Acquisition Costs	-	-	-	-
Capital Equipment	-	-	-	-
Other Equipment/Tools	-	-	-	-
Supplies/Materials	-	\$1,000	Private	\$1,000
DNR IDP	-	-	-	-
<b>Grand Total</b>	<b>\$119,000</b>	<b>\$4,000</b>	-	<b>\$123,000</b>

**Personnel**

Position	Annual FTE	Years Working	Funding Request	Leverage	Leverage Source	Total
CRP Staff	0.4	3.0	\$91,000	-	-	\$91,000

**Amount of Request:** \$2,981,000

**Amount of Leverage:** \$151,000

**Leverage as a percent of the Request:** 5.07%

**DSS + Personnel:** \$391,000

**As a % of the total request:** 13.12%

**Easement Stewardship:** -

**As a % of the Easement Acquisition:** -

**How will this program accommodate the reduced appropriation recommendation from the original proposed requested amount?**

A reduction in funding would reduce outputs proportionally. Program management costs would be the exception, due to program development and oversight remaining somewhat consistent regardless of appropriation amount. Restoration and enhancement acres and budgets would be reduced in a way that meets the needs of the remaining parcels.

**Describe and explain leverage source and confirmation of funds:**

All partners provide some DSS costs as privately sourced leverage and attempt to bring various state, local and private funds to acquire property and conduct enhancement/restoration activities.

Clean River Partners and TPL provide travel costs as privately sourced leverage.

## Personnel

### Has funding for these positions been requested in the past?

Yes

#### **Please explain the overlap of past and future staffing and position levels previously received and how that is coordinated over multiple years?**

FTEs listed are an estimate of the personnel time required to produce the grant deliverables put forward in this proposal. An array of staff draw from these funds for legal work, negotiating with landowners, crafting of acquisition documents, coordinating with agency partners, working with contractors, restoration and enhancement activities, conducting landowner outreach and managing the grant. We use only those personnel funds necessary to achieve the goals of the grant.

## Contracts

### What is included in the contracts line?

Clean River Partners' line includes accounting service.

TPL's contract line includes potential site clean-up and initial restoration activities.

GRG's contract line includes restoration/enhancement contracts by service providers.

## Fee Acquisition

### What is the anticipated number of fee title acquisition transactions?

We anticipate we will close 1 to 2 transactions and investigate 2 others.

## Travel

### Does the amount in the travel line include equipment/vehicle rental?

Yes

#### **Explain the amount in the travel line outside of traditional travel costs of mileage, food, and lodging**

In addition to the traditional travel costs of mileage, food, and lodging, Great River Greening will sometimes rent vehicles for travel.

#### **I understand and agree that lodging, meals, and mileage must comply with the current MMB Commissioner Plan:**

Yes

## Direct Support Services

### How did you determine which portions of the Direct Support Services of your shared support services is direct to this program?

Clean River Partners' DSS request is calculated on allowable direct and necessary expenditures that are not captured in other line items in the budget, and a portion of these allowable direct and necessary costs are contributed as privately sourced leverage. Clean River Partners is in the process of applying for an approved rate with MN DNR.

TPL's DSS request is based upon its federal rate which has been approved by the MN DNR and 50% of these costs are requested from the OHF grant while 50% is contributed as privately sourced leverage.

GRG's DSS rate has been approved by the DNR on October 4, 2019. GRG's DSS rate includes the allowable direct and necessary expenditures that are not captured in other line items in the budget. A portion, not exceeding 50%, of these costs are requested from the grant and the balance is contributed as privately sourced leverage.

### **Other Equipment/Tools**

#### **Give examples of the types of Equipment and Tools that will be purchased?**

Hand tools, saws, brush cutters, personal protective equipment, burn equipment, seed collection equipment, repairs and other necessary equipment to complete restoration and enhancement activities.

### **Federal Funds**

#### **Do you anticipate federal funds as a match for this program?**

No

Output Tables**Acres by Resource Type (Table 1)**

Type	Wetland	Prairie	Forest	Habitat	Total Acres
Restore	6	235	23	-	264
Protect in Fee with State PILT Liability	72	73	72	73	290
Protect in Fee w/o State PILT Liability	-	-	-	-	-
Protect in Easement	-	-	-	-	-
Enhance	34	-	60	-	94
<b>Total</b>	<b>112</b>	<b>308</b>	<b>155</b>	<b>73</b>	<b>648</b>

**Total Requested Funding by Resource Type (Table 2)**

Type	Wetland	Prairie	Forest	Habitat	Total Funding
Restore	\$54,000	\$610,000	\$76,000	-	\$740,000
Protect in Fee with State PILT Liability	\$480,000	\$484,000	\$480,000	\$483,000	\$1,927,000
Protect in Fee w/o State PILT Liability	-	-	-	-	-
Protect in Easement	-	-	-	-	-
Enhance	\$91,000	-	\$223,000	-	\$314,000
<b>Total</b>	<b>\$625,000</b>	<b>\$1,094,000</b>	<b>\$779,000</b>	<b>\$483,000</b>	<b>\$2,981,000</b>

**Acres within each Ecological Section (Table 3)**

Type	Metro/Urban	Forest/Prairie	SE Forest	Prairie	N. Forest	Total Acres
Restore	-	-	-	264	-	264
Protect in Fee with State PILT Liability	-	-	-	290	-	290
Protect in Fee w/o State PILT Liability	-	-	-	-	-	-
Protect in Easement	-	-	-	-	-	-
Enhance	-	-	-	94	-	94
<b>Total</b>	<b>-</b>	<b>-</b>	<b>-</b>	<b>648</b>	<b>-</b>	<b>648</b>

**Total Requested Funding within each Ecological Section (Table 4)**

Type	Metro/Urban	Forest/Prairie	SE Forest	Prairie	N. Forest	Total Funding
Restore	-	-	-	\$740,000	-	\$740,000
Protect in Fee with State PILT Liability	-	-	\$29,000	\$1,898,000	-	\$1,927,000
Protect in Fee w/o State PILT Liability	-	-	-	-	-	-
Protect in Easement	-	-	-	-	-	-
Enhance	-	-	-	\$314,000	-	\$314,000
<b>Total</b>	<b>-</b>	<b>-</b>	<b>\$29,000</b>	<b>\$2,952,000</b>	<b>-</b>	<b>\$2,981,000</b>

**Average Cost per Acre by Resource Type (Table 5)**

Type	Wetland	Prairie	Forest	Habitat
Restore	\$9,000	\$2,595	\$3,304	-
Protect in Fee with State PILT Liability	\$6,666	\$6,630	\$6,666	\$6,616
Protect in Fee w/o State PILT Liability	-	-	-	-
Protect in Easement	-	-	-	-
Enhance	\$2,676	-	\$3,716	-

**Average Cost per Acre by Ecological Section (Table 6)**

Type	Metro/Urban	Forest/Prairie	SE Forest	Prairie	N. Forest
Restore	-	-	-	\$2,803	-
Protect in Fee with State PILT Liability	-	-	-	\$6,544	-

Protect in Fee w/o State PILT Liability	-	-	-	-	-
Protect in Easement	-	-	-	-	-
Enhance	-	-	-	\$3,340	-

**Target Lake/Stream/River Feet or Miles**

1.4



## Parcels

*For restoration and enhancement programs ONLY: Managers may add, delete, and substitute projects on this parcel list based upon need, readiness, cost, opportunity, and/or urgency so long as the substitute parcel/project forwards the constitutional objectives of this program in the Project Scope table of this accomplishment plan. The final accomplishment plan report will include the final parcel list.*

### Parcel Information

#### Sign-up Criteria?

No

#### Explain the process used to identify, prioritize, and select the parcels on your list:

The Trust for Public Land works with its public partners to identify and prioritize projects that meet their objectives and are on their priority lists. Criteria includes whether the land provides critical habitat for game and non-game species and quality public recreational opportunities, presence of unique plants and animals species (including SGCN), goals of conservation plans, adjacency to other public land or habitat complexes, existence of local support, immediacy of threats, landowner willingness and time frame.

Great River Greening works with land owning entities (public and protected private) and interested stakeholders to identify parcels where there is a need for restoration or enhancement of lands and water resources. Parcels are selected using the following criteria: permanently protected status (WMA, AMA, SNA, Forestry, County Conservation, etc.), ecological and habitat value and potential (biodiversity, size and location), congruence with existing plans and priority areas, willing and committed landowners (demonstrated through leveraged match), and leveraging opportunities.

### Restore / Enhance Parcels

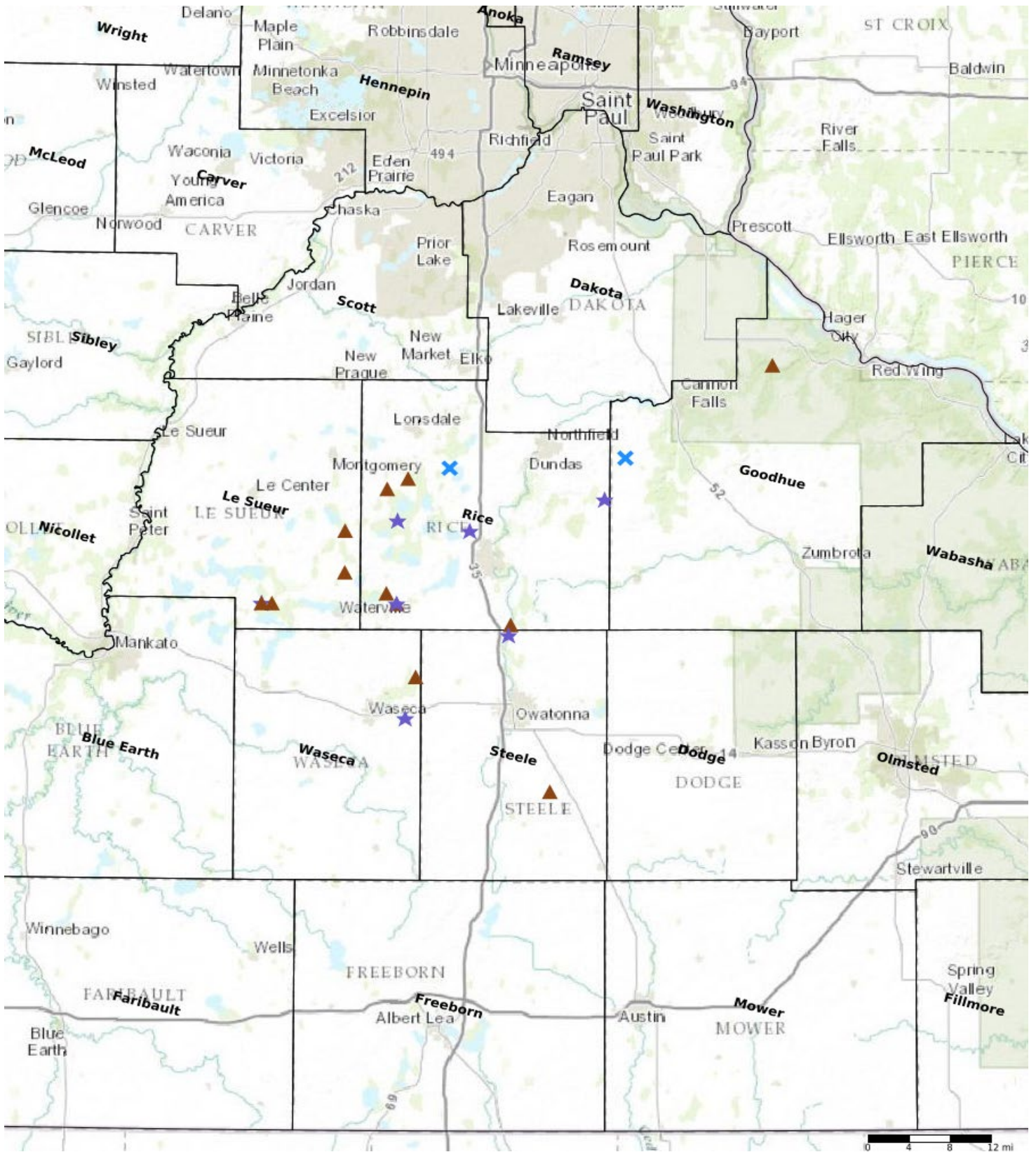
Name	County	TRDS	Acres	Est Cost	Existing Protection
Warsaw WMA	Goodhue	11118208	0	\$0	Yes
Dove Lake WMA II	Le Sueur	10924221	0	\$0	Yes
Boyd Sartell WMA	Rice	11022210	0	\$0	Yes
Sunktokeca WMA Ph III	Rice	11021214	0	\$0	Yes
Circle Lake WMA	Rice	11121216	57	\$193,000	Yes
Sakatah WMA Ph II	Rice	10922222	10	\$62,000	Yes
Prairie Creek WMA	Rice	11119236	138	\$362,900	Yes
Faribault WMA	Steele	10820204	153	\$376,200	Yes
Goose Lake Park	Waseca	10722214	0	\$0	Yes

### Protect Parcels

Name	County	TRDS	Acres	Est Cost	Existing Protection
Cannon River Turtle Preserve SNA II	Goodhue	11316227	200	\$615,000	No
Dove Lake WMA	Le Sueur	10924221	66	\$290,000	No
Dora Lake WMA	Le Sueur	11023214	172	\$650,000	No
Earl Swain WMA	Le Sueur	10924222	75	\$450,000	No
Sakatah WMA	Rice	10922216	80	\$210,000	No
Gray Fox WMA II	Rice	11122228	79	\$200,000	No
Faribault WMA II	Rice	10920233	37	\$185,000	No
Horseshoe Lake WMA - Tract 1	Rice	10923202	150	\$750,000	No
Sakatah WMA Addition II	Rice	10922222	62	\$589,000	No
Big Woods Heritage Forest WMA II	Rice	11122223	227	\$950,000	No
Aurora WMA Addition 2	Steele	10619219	50	\$230,000	No

Moonan Marsh WMA	Waseca	10822225	75	\$316,000	No
------------------	--------	----------	----	-----------	----

### Parcel Map



- Protect in Easement
- ▲ Protect in Fee with PILT
- ▲ Protect in Fee W/O PILT
- ★ Restore
- ✕ Enhance
- ⊕ Other