



## Lessard-Sams Outdoor Heritage Council

MN Prairie Recovery Program Phase 12  
Laws of Minnesota 2022 Accomplishment Plan

---

### General Information

**Date:** 06/20/2022

**Project Title:** MN Prairie Recovery Program Phase 12

**Funds Recommended:** \$4,512,000

**Legislative Citation:** ML 2022, Ch. 77, Art. 1, Sec. 2, subd. 2(d)

**Appropriation Language:** \$4,512,000 the second year is to the commissioner of natural resources for an agreement with The Nature Conservancy to acquire land in fee and restore and enhance native prairie, grasslands, wetlands, and savanna. Subject to evaluation criteria in Minnesota Rules, part 6136.0900, priority must be given to acquiring lands that are eligible for the native prairie bank under Minnesota Statutes, section 84.96, or lands adjacent to protected native prairie. Annual income statements and balance sheets for income and expenses from land acquired with this appropriation must be submitted to the Lessard-Sams Outdoor Heritage Council no later than 180 days following the close of The Nature Conservancy's fiscal year. A list of proposed land acquisitions, restorations, and enhancements must be provided as part of the required accomplishment plan and must be consistent with the priorities identified in the Minnesota Prairie Conservation Plan.

### Manager Information

**Manager's Name:** Neal Feeken

**Title:** Grassland Conservation Program Director

**Organization:** The Nature Conservancy

**Address:** 1101 W River Parkway Suite 200

**City:** Minneapolis, MN 55415

**Email:** nfeeken@tnc.org

**Office Number:** 612-331-0738

**Mobile Number:** 651-357-2161

**Fax Number:**

**Website:** nature.org

### Location Information

**County Location(s):** Norman, Becker, Big Stone, Chippewa, Clay, Cottonwood, Kandiyohi, Kittson, Lac qui Parle, Lincoln, Lyon, Mahnomen, Murray, Nobles, Pennington, Pipestone, Polk, Pope, Red Lake, Rock, Roseau, Stearns, Swift, Traverse, Wilkin and Yellow Medicine.

**Eco regions in which work will take place:**

- Forest / Prairie Transition
- Prairie

#### **Activity types:**

- Protect in Fee
- Restore
- Enhance

#### **Priority resources addressed by activity:**

- Wetlands
- Prairie

## Narrative

### **Abstract**

The project will advance the protection, restoration and enhancement goals for prairie, grassland and wetland habitats as described in the 2018 MN Prairie Conservation Plan. It builds upon the highly successful model previously established in prior Prairie Recovery Phases and seeks to protect 500 acres in Fee without PILT obligations to be held by The Nature Conservancy, enhance 18,000 acres of permanently protected grasslands, and restore 200 acres of prairie and wetland habitat. Protection and restoration projects will contribute toward state climate goals by sequestering approximately 165,000 metric tons CO2 equivalent.

### **Design and Scope of Work**

**Protect** - An estimated 500 acres of prairie, wetlands, grasslands, and savanna will be permanently protected through fee-title acquisition from willing sellers in priority prairie core/corridor landscapes as identified in the 2018 MN Prairie Conservation Plan. Acquired lands will be prioritized using LSOHC approved criteria that include: percentage of native prairie on the parcel, proximity to other permanently protected areas, quality of habitat and species diversity, and suitability for public recreation. Protected acres without PILT will be held by The Nature Conservancy subject to a recorded notice of funding restrictions.

**Enhance** - An estimated 18,000 acres of grassland/wetland complex will be enhanced on permanently protected lands, including lands purchased with OHF funds and held by the Conservancy, MN DNR Management Units, US Fish and Wildlife Service lands, and private lands subject to perpetual conservation easements. The primary objectives of the enhancement activities will be to increase native species diversity and improve critical wildlife habitat. A variety of practices and techniques will be implemented to accomplish the objectives such as: prescribed fire; removal of trees and woody species; invasive species control including mechanical, biological, and chemical control; over-seeding degraded grasslands with native seed; and conservation grazing, mowing, or haying. The work will be conducted primarily through contracts with local vendors, Conservation Corps of Minnesota or Student Conservation Association crews and by using Nature Conservancy seasonal and permanent staff. Prairie Recovery Biologists, stationed in four landscapes within the Prairie region are responsible for identifying and prioritizing projects in cooperation with agency partners; selecting and overseeing contracted work; and leading and directing seasonal staff. The Biologists are also responsible for participating in and leading Prairie Plan Local Technical Team efforts to increase efficiency and effectiveness of program delivery by multiple partners at the landscape scale.

**Restore** - Approximately 200 acres of cropland will be restored to diverse local-ecotype grassland and grassland/wetland complexes. Practices to be implemented include those listed as enhancements above and the restoration of original wetland hydrology.

Results to date - Through previous Phases of the Prairie Recovery Program we have protected 7,590 acres of prairies, wetlands, and grasslands, enhanced more than 150,000 acres of permanently protected grasslands and restored approximately 1,800 acres with locally-sourced native seed. All parcels protected were directly adjacent to, or contributed to, the functional integrity of existing habitat complexes. Average per acre cost for acquired properties has averaged around \$2,000 per acre. Our enhancement projects have focused on accelerating the implementation of prescribed fire, woody vegetation removal, building the infrastructure for conservation grazing systems and treatment of invasive species. Costs for enhancement and restoration work vary depending on the practices being implemented but have averaged around \$120 per acre.

Collectively these projects have captured approximately 723,000 metric tons CO2 equivalent and will continue to hold that carbon in prairie soils perpetually.

### **How does the plan address habitats that have significant value for wildlife species of greatest conservation need, and/or threatened or endangered species, and list targeted species?**

Temperate grasslands are the most endangered and least protected habitat type on earth, and Minnesota's prairies are no exception. Activities identified in this project directly reflect implementation strategies identified in the MN Prairie Conservation Plan. Properties targeted for acquisition are identified and prioritized using MN County Biological Survey Rare Element Occurrences and Biodiversity Significance. The geographies we work within, in addition to being Prairie Plan Core areas, reflect areas with the highest density and highest quality remaining prairie systems left in the state. By focusing our work in these particular landscapes we increase the functionality of the overall prairie/grassland systems, including increasing water retention, improving breeding and nesting habitat and augmenting migratory corridors. While our work focuses on increasing and maintaining system functionality a number of individual species and suites of SPGCN will directly benefit from this project including:

Insects - habitat management and protection specifically for the federally-threatened Dakota skipper butterfly, potential restoration of habitat for the endangered Poweshiek skipperling and the declining regal fritillary butterflies

Mammals - American badger (an indicator species requiring intact blocks of quality habitat), elk (for herd management in NW MN)

Reptiles - hognose snake (primarily in western MN counties of Lac qui Parle, Big Stone and Yellow Medicine), 5-lined skink (rock outcroppings in the upper MN River Valley)

Birds - Grassland dependent birds have experienced precipitous population decline across Minnesota and the northern Great Plains, largely due to habitat loss on the breeding grounds. This project will provide permanently protected and enhanced habitat for a suite of grassland and wetland nesting birds, most notably the Meadowlark, Bobolink, Dickcissel, Grasshopper sparrow, Henslow's sparrow, Upland sandpiper, Black tern, Northern pintail, Greater Prairie-chicken, Sharp-tail grouse, and many others.

## **Describe how the plan uses science-based targeting that leverages or expands corridors and complexes, reduces fragmentation or protects areas identified in the MN County Biological Survey:**

The project focuses activities on core/corridor complexes as described in the MN Prairie Conservation Plan. The Prairie plan was developed using the best available information for identifying the highest quality/highest density remaining prairie and grassland complexes in the state and is periodically revisited for accuracy and relevance by a core team of State, Federal and NGO prairie biologists.

Individual parcels are prioritized using the attached criteria. Important considerations include % of native prairie on tract; adjacency to other native prairie; proximity to other protected lands; and uniqueness and diversity of species present. MN County Biological Survey data and biodiversity rankings are key tools used to measure these criteria.

## **Which two sections of the Minnesota Statewide Conservation and Preservation Plan are most applicable to this project?**

- H1 Protect priority land habitats
- H5 Restore land, wetlands and wetland-associated watersheds

## **Which two other plans are addressed in this program?**

- Minnesota Prairie Conservation Plan
- Minnesota's Wildlife Action Plan 2015-2025

## **Which LSOHC section priorities are addressed in this program?**

### **Forest / Prairie Transition**

- Protect, enhance, and restore rare native remnant prairie

### **Prairie**

- Protect, enhance, and restore remnant native prairie, Big Woods forests, and oak savanna

## **Does this program include leveraged funding?**

Yes

## **Explain the leverage:**

We are leveraging state funds with private funds by depositing private donations amounting to 20% of the value of fee-title without PILT obligation acquisitions in a permanent stewardship account that guarantees our ability to maintain acquired properties over time. Further, we track any revenues generated from the properties in the form of lease or CRP payments in a separate restricted account that is used to pay property taxes or management costs on the acquired parcels. This account generates less than 50% of our annual property tax obligation, with the remaining taxes paid by the Conservancy using other private funds.

## **Per MS 97A.056, Subd. 24, Please explain whether the request is supplanting or is a substitution for any previous funding that was not from a legacy fund and was used for the same purpose.**

All protection, enhancement and restoration work utilizing OHF allocations is supplemental to core work historically done by the Conservancy. OHF dollars allow us to increase the pace and scale of protection, restoration, and enhancement of native prairies and critical grasslands identified as priorities in the MN Prairie Conservation Plan.

## Non-OHF Appropriations

Year	Source	Amount
2017	TNC Private Contributions	229,900
2018	TNC Private Contributions	198,865
2015	TNC Private Contributions	173,800
2012	TNC Private Contributions	851,000
2013	TNC Private Contributions	1,119,900
2014	TNC Private Contributions	467,400
2011	TNC Private Contributions	1,427,700
2010	TNC Private Contributions	1,228,100

### How will you sustain and/or maintain this work after the Outdoor Heritage Funds are expended?

Protection, restoration, and enhancement are all critical tools for the long-term viability of Minnesota's prairie/wetland systems. The prairie pothole landscape can only be sustained through the regular application of disturbance, including fire, grazing and haying. A primary purpose of this proposal is to continue a highly successful collaborative and coordinated partnership that accelerates the use of these practices across multiple landscapes. In many cases requested funds will develop infrastructure and enable completion of one-time large expenses such as woody species removal and installation of fencing for conservation grazing. Once the initial activities are completed we expect long-term maintenance costs to moderate. The Nature Conservancy will continue to seek mechanisms that derive revenue from grazing, haying and seed production consistent with our conservation goals. All resulting income will be placed in a dedicated account for future property tax payments and management of properties acquired with Outdoor Heritage Funds. Our past efforts show that revenue generation is insufficient to pay for all associated expenses, therefore we plan to seek future funding from the Outdoor Heritage Fund along with private contributions for long-term stewardship needs.

### Actions to Maintain Project Outcomes

Year	Source of Funds	Step 1	Step 2	Step 3
As appropriate	OHF/TNC private funds, lease payments	Conservation grazing	-	-
Annually	OHF/TNC private funds	Invasive search/treatment	-	-
Once every 4-5 years	OHF, TNC private funds	Prescribed Fire	-	-

### How will the program directly involve, engage, and benefit BIPOC (Black, Indigenous, People of Color) and diverse communities:

In addition to the on-the-ground conservation benefits afforded by the work described above, the MN Prairie Recovery Program, through a robust seasonal employee hiring program, serves as a vehicle for training the next generation of conservation professionals. Our seasonal staff is largely comprised of young and aspiring conservationists looking to gain practical hands-on experience, either through short-term summer, or longer-term "1st job in the field", employment. Our recruitment practices are rooted in our Mission and guided by our Values, which includes a Commitment to Diversity and Respect for People, Communities, and Cultures. We know we'll only achieve our Mission by hiring and engaging a diverse workforce that reflects the communities in which we work. Hiring Teams must follow TNC's inclusive hiring practices for all positions. This includes: 1) reviewing position descriptions to ensure language is inclusive, non-gendered and only includes requirements necessary for the job. 2) advertising job openings widely, posting via the Professional Diversity Network among others, and for adequate duration to attract a diverse candidate pool 3) Extending the posting period or reopening a closed position in order to conduct additional outreach should candidate pools lack diversity. 4) Ensuring each interview is conducted with consistent conditions and questions. 5) Ensuring interview panels are diverse and gender balanced appropriately. All panelists receive training to avoid unconscious bias. We are beginning to see more diverse candidate pools

resulting in a subsequent diversification of our workforce.

Further, the landscapes where the Prairie Recovery work occurs are in relative proximity to a number of cities with significant BIPOC communities (St. Cloud, Wilmar, Morris, Fargo/Moorhead). BIPOC and diverse communities experience disproportionate access to nature on private lands, meaning open and accessible public lands are even more crucial for recruiting and retaining a diverse next generation of hunters, anglers, nature photographers, writers, artists and nature enthusiasts. Work proposed through the MN Prairie Recovery Program will add to the quantity and quality of public lands available to all Minnesotans, including BIPOC and diverse communities.

## Activity Details

### Requirements

**If funded, this program will meet all applicable criteria set forth in MS 97A.056?**

Yes

**Will county board or other local government approval be formally sought\*\* prior to acquisition, per 97A.056 subd 13(j)?**

No

**Describe any measures to inform local governments of land acquisition under their jurisdiction:**

We will follow the county/township board notification processes as directed by current statutory language.

**Is the land you plan to acquire (fee title) free of any other permanent protection?**

Yes

**Will restoration and enhancement work follow best management practices including MS 84.973 Pollinator Habitat Program?**

Yes

**Is the restoration and enhancement activity on permanently protected land per 97A.056, Subd 13(f), tribal lands, and/or public waters per MS 103G.005, Subd. 15?**

Yes

**Where does the activity take place?**

- WMA
- WPA
- Permanently Protected Conservation Easements
- Refuge Lands
- Other : TNC owned lands purchased with OHF dollars

### Land Use

**Will there be planting of any crop on OHF land purchased or restored in this program?**

Yes

**Explain what will be planted:**

Short-term use of agricultural crops is an accepted Best Practice for preparing a site for prairie restoration. For example short-term use of soybeans or other commercial crops can be used for restorations in order to control weed seedbeds prior to prairie planting. In some cases this necessitates the use of GMO treated products to facilitate herbicide use in order to control weeds present in the seedbank. Neonicitinoide treated seed will not be used. We would not expect agricultural crop use to exceed 3 years on any given

OHF acquired property. We continue to explore the viability of alternative restoration techniques to minimize the need to farm restoration sites, including expanded use of cover crops.

**Is this land currently open for hunting and fishing?**

No

**Will the land be open for hunting and fishing after completion?**

Yes

**Describe any variation from the State of Minnesota regulations:**

No variation anticipated

**Who will eventually own the fee title land?**

- NGO

**Land acquired in fee will be designated as a:**

- Other
- National Wildlife Refuge

**What is the anticipated number of closed acquisitions (range is fine) you plan to accomplish with this appropriation?**

3-4

**Are there currently trails or roads on any of the proposed acquisitions?**

No

**Will new trails or roads be developed or improved as a result of the OHF acquisition?**

No

**Will the acquired parcels be restored or enhanced within this appropriation?**

Yes

Initial restoration will be completed with this appropriation. Additional enhancement may be completed with future appropriations.

**Will the land that you acquire (fee or easement) be restored or enhanced within this program's funding and availability?**

Yes

**Timeline**

<b>Activity Name</b>	<b>Estimated Completion Date</b>
18,000 acres enhanced	June 2026
500 acres protected in Fee w/out PILT	June 2025
200 acres restored to native prairie/wetland	June 2027

**Date of Final Report Submission:** 08/15/2027

**Availability of Appropriation:** Subd. 7. Availability of Appropriation

(a) Money appropriated in this section may not be spent on activities unless they are directly related to and necessary for a specific appropriation and are specified in the accomplishment plan approved by the Lessard-Sams

Outdoor Heritage Council. Money appropriated in this section must not be spent on indirect costs or other institutional overhead charges that are not directly related to and necessary for a specific appropriation. Money appropriated to acquire land in fee may be used to restore, enhance, and provide for public use of the land acquired with the appropriation. Public-use facilities must have a minimal impact on habitat in acquired lands.

(b) Money appropriated in this section is available as follows:

(1) money appropriated for acquiring real property is available until June 30, 2026;

(2) money appropriated for restoring and enhancing land acquired with an appropriation in this act is available for four years after the acquisition date with a maximum end date of June 30, 2030;

(3) money appropriated for restoring or enhancing other land is available until June 30, 2027;

(4) notwithstanding clauses (1) to (3), money appropriated for a project that receives at least 15 percent of its funding from federal funds is available until a date sufficient to match the availability of federal funding to a maximum of six years if the federal funding was confirmed and included in the original approved draft accomplishment plan; and

(5) money appropriated for other projects is available until the end of the fiscal year in which it is appropriated.



**Budget**

*Budget reallocations up to 10% do not require an amendment to the Accomplishment Plan.*

**Totals**

Item	Funding Request	Antic. Leverage	Leverage Source	Total
Personnel	\$1,102,500	-	-	\$1,102,500
Contracts	\$1,263,200	-	-	\$1,263,200
Fee Acquisition w/ PILT	-	-	-	-
Fee Acquisition w/o PILT	\$1,500,000	\$300,000	TNC private funds	\$1,800,000
Easement Acquisition	-	-	-	-
Easement Stewardship	-	-	-	-
Travel	\$60,700	-	-	\$60,700
Professional Services	\$98,600	-	-	\$98,600
Direct Support Services	\$202,200	-	-	\$202,200
DNR Land Acquisition Costs	-	-	-	-
Capital Equipment	\$35,000	-	-	\$35,000
Other Equipment/Tools	\$114,800	-	-	\$114,800
Supplies/Materials	\$135,000	-	-	\$135,000
DNR IDP	-	-	-	-
<b>Grand Total</b>	<b>\$4,512,000</b>	<b>\$300,000</b>	-	<b>\$4,812,000</b>

**Personnel**

Position	Annual FTE	Years Working	Funding Request	Antic. Leverage	Leverage Source	Total
Project Management	0.5	2.0	\$57,000	-	-	\$57,000
Grant Administration	0.12	2.0	\$28,600	-	-	\$28,600
Habitat Crews	6.0	2.0	\$507,600	-	-	\$507,600
Protection Specialist	1.25	2.0	\$243,300	-	-	\$243,300
Prairie Recovery Biologists	2.0	2.0	\$266,000	-	-	\$266,000

**Capital Equipment**

Item	Funding Request	Antic. Leverage	Leverage Source	Total
Tracked UTV	\$35,000	-	-	\$35,000

**Amount of Request:** \$4,512,000

**Amount of Leverage:** \$300,000

**Leverage as a percent of the Request:** 6.65%

**DSS + Personnel:** \$1,304,700

**As a % of the total request:** 28.92%

**Easement Stewardship:** -

**As a % of the Easement Acquisition:** -

**How will this program accommodate the reduced appropriation recommendation from the original proposed requested amount?**

The reduced allocation is reflected in approximately proportionally reduced line items in the budget. A 60% reduction in funds from proposal will result in approximately 60% less outcomes than originally proposed.

**Describe and explain leverage source and confirmation of funds:**

The leverage offered represents private contributions equal to 20% of acquisition costs for Fee w/out PILT acquisitions. These funds will be placed in an endowment account that will be used to help ensure long-term management and property tax obligations are met.

**Personnel****Has funding for these positions been requested in the past?**

Yes

**Please explain the overlap of past and future staffing and position levels previously received and how that is coordinated over multiple years?**

Phase 12 is a component of the larger MN Prairie Recovery Program. Continuity of funding across multiple Phases allows us flexibility when prioritizing parcels for protection or enhancement. Further, it ensures stability in our staffing model and provides the ability to plan and prioritize projects over multiple years. The flexibility provided by stable funding is critically important to achieving conservation goals given the uncertainty and variability of field season weather conditions.

**Contracts****What is included in the contracts line?**

The entire contract line item is dedicated to enhancement and restoration work. Typical contractors include private vendors and Conservation Corps of MN/IA.

**Fee Acquisition****What is the anticipated number of fee title acquisition transactions?**

3-4 individual acquisitions

**Travel****Does the amount in the travel line include equipment/vehicle rental?**

Yes

**Explain the amount in the travel line outside of traditional travel costs of mileage, food, and lodging**

Travel line item includes funds for short term vehicle rentals, primarily for Project coordinator and Protection Specialists.

Long term truck lease costs for the Prairie Recovery Biologists are reflected in the Other Equipment line item

**I understand and agree that lodging, meals, and mileage must comply with the current MMB Commissioner Plan:**

Yes

**Direct Support Services****How did you determine which portions of the Direct Support Services of your shared support services is direct to this program?**

DSS is based on The Nature Conservancy's Federal Negotiated Rate (FNR) as proposed and approved by the US Dept. of Interior on an annual basis. In this proposal we are requesting reimbursement of 7.5% of eligible base costs as determined by our annual FNR and based on suggestions from the Council in prior years' hearings. The amount requested for reimbursement represents less than one-third of the total reimbursable costs allowed under the FNR. Examples of expenses included in the FNR include services from in-house legal counsel; finance, human resources; and information technology support, all of which contribute directly to the implementation of the project. The FNR is not applied to capital equipment over \$50,000 or land acquisition.

### **Other Equipment/Tools**

#### **Give examples of the types of Equipment and Tools that will be purchased?**

Equipment and tools run the gamut of necessary field supplies ranging from power tools to hand tools. Examples may include chain saws, brush saws, trailers, ATV's, personal protection equipment for prescribed fire, and fencing/watering materials for conservation grazing. The equipment line item also includes herbicide and related application equipment, which are important tools for controlling invasive and noxious weeds in grasslands.

### **Federal Funds**

#### **Do you anticipate federal funds as a match for this program?**

No

## Output Tables

### Acres by Resource Type (Table 1)

Type	Wetland	Prairie	Forest	Habitat	Total Acres
Restore	75	125	-	-	200
Protect in Fee with State PILT Liability	-	-	-	-	-
Protect in Fee w/o State PILT Liability	100	400	-	-	500
Protect in Easement	-	-	-	-	-
Enhance	6,000	12,000	-	-	18,000
<b>Total</b>	<b>6,175</b>	<b>12,525</b>	<b>-</b>	<b>-</b>	<b>18,700</b>

### How many of these Prairie acres are Native Prairie? (Table 1b)

Type	Native Prairie (acres)
Restore	-
Protect in Fee with State PILT Liability	-
Protect in Fee w/o State PILT Liability	300
Protect in Easement	-
Enhance	16,000
<b>Total</b>	<b>16,300</b>

### Total Requested Funding by Resource Type (Table 2)

Type	Wetland	Prairie	Forest	Habitat	Total Funding
Restore	\$75,000	\$125,000	-	-	\$200,000
Protect in Fee with State PILT Liability	-	-	-	-	-
Protect in Fee w/o State PILT Liability	\$319,200	\$1,180,800	-	-	\$1,500,000
Protect in Easement	-	-	-	-	-
Enhance	\$886,900	\$1,925,100	-	-	\$2,812,000
<b>Total</b>	<b>\$1,281,100</b>	<b>\$3,230,900</b>	<b>-</b>	<b>-</b>	<b>\$4,512,000</b>

### Acres within each Ecological Section (Table 3)

Type	Metro/Urban	Forest/Prairie	SE Forest	Prairie	N. Forest	Total Acres
Restore	-	100	-	100	-	200
Protect in Fee with State PILT Liability	-	-	-	-	-	-
Protect in Fee w/o State PILT Liability	-	250	-	250	-	500
Protect in Easement	-	-	-	-	-	-
Enhance	-	8,750	-	9,250	-	18,000
<b>Total</b>	<b>-</b>	<b>9,100</b>	<b>-</b>	<b>9,600</b>	<b>-</b>	<b>18,700</b>

### Total Requested Funding within each Ecological Section (Table 4)

Type	Metro/Urban	Forest/Prairie	SE Forest	Prairie	N. Forest	Total Funding
Restore	-	\$100,000	-	\$100,000	-	\$200,000
Protect in Fee with State PILT Liability	-	-	-	-	-	-
Protect in Fee w/o State PILT Liability	-	\$750,000	-	\$750,000	-	\$1,500,000
Protect in Easement	-	-	-	-	-	-
Enhance	-	\$1,350,000	-	\$1,462,000	-	\$2,812,000
<b>Total</b>	<b>-</b>	<b>\$2,200,000</b>	<b>-</b>	<b>\$2,312,000</b>	<b>-</b>	<b>\$4,512,000</b>

### Average Cost per Acre by Resource Type (Table 5)

Type	Wetland	Prairie	Forest	Habitat
------	---------	---------	--------	---------

Restore	\$1,000	\$1,000	-	-
Protect in Fee with State PILT Liability	-	-	-	-
Protect in Fee w/o State PILT Liability	\$3,192	\$2,952	-	-
Protect in Easement	-	-	-	-
Enhance	\$147	\$160	-	-

### Average Cost per Acre by Ecological Section (Table 6)

Type	Metro/Urban	Forest/Prairie	SE Forest	Prairie	N. Forest
Restore	-	\$1,000	-	\$1,000	-
Protect in Fee with State PILT Liability	-	-	-	-	-
Protect in Fee w/o State PILT Liability	-	\$3,000	-	\$3,000	-
Protect in Easement	-	-	-	-	-
Enhance	-	\$154	-	\$158	-

### Target Lake/Stream/River Feet or Miles

## Outcomes

### Programs in forest-prairie transition region:

- Remnant native prairies are part of large complexes of restored prairies, grasslands, and large and small wetlands ~ *Protection results will be measured against MN Prairie Conservation Plan goals for protected acres of native prairie and associated grassland for each geography.*

*Enhancement results will be measured using protocols developed for the multi-agency Grassland Monitoring Network.*

### Programs in prairie region:

- Remnant native prairies and wetlands are perpetually protected and adequately buffered ~ *Protection results will be measured against MN Prairie Conservation Plan goals for protected acres of native prairie and associated grassland for each geography.*

*Enhancement results will be measured using protocols developed for the multi-agency Grassland Monitoring Network.*

## Parcels

*For restoration and enhancement programs ONLY: Managers may add, delete, and substitute projects on this parcel list based upon need, readiness, cost, opportunity, and/or urgency so long as the substitute parcel/project forwards the constitutional objectives of this program in the Project Scope table of this accomplishment plan. The final accomplishment plan report will include the final parcel list.*

### Parcel Information

#### Sign-up Criteria?

[Yes](#)

#### Explain the process used to identify, prioritize, and select the parcels on your list:

Parcel selection for Protection projects without PILT obligations are prioritized according to the goals found within the MN Prairie Plan and specifically using the attached criteria. Parcels that the Conservancy will own and manage are located within core portfolio sites. Enhancement parcels consist of permanently protected grasslands primarily, USFWS WPAs and MN DNR WMAs, and are selected for funding in close consultation with the partner responsible for ultimate management. Parcels proposed on the parcel list do not reflect actual parcels, rather are illustrative of the areas in which our work is to be conducted. Maintaining anonymity of parcels is an important consideration for the organization in order to protect landowner privacy rights and to maintain the integrity of good faith negotiations. All actual protection parcels will be submitted to the LSOHC for approval prior to acquiring through an Accomplishment Plan amendment request. All completed restoration and enhancement projects will be reported to the Council on the Status Updates and the Final Report.

### Restore / Enhance Parcels

Name	County	TRDS	Acres	Est Cost	Existing Protection
NA	Becker	13942201	99	\$1,000	Yes
NA	Becker	13942201	99	\$1,000	Yes
NA	Big Stone	12446210	99	\$1,000	Yes
NA	Big Stone	12446210	99	\$1,000	Yes
NA	Chippewa	11739213	99	\$1,000	Yes
NA	Chippewa	11739213	99	\$1,000	Yes
NA	Clay	14247204	99	\$1,000	Yes
NA	Clay	14247204	99	\$1,000	Yes
NA	Cottonwood	10734220	99	\$1,000	Yes
NA	Cottonwood	10734220	99	\$1,000	Yes
NA	Kandiyohi	12233215	99	\$1,000	Yes
NA	Kandiyohi	12233215	99	\$1,000	Yes
NA	Kittson	16045206	99	\$1,000	Yes
NA	Kittson	16045206	99	\$1,000	Yes
NA	Lac qui Parle	11943211	99	\$1,000	Yes
NA	Lac qui Parle	11943211	99	\$1,000	Yes
NA	Lincoln	10945217	99	\$1,000	Yes
NA	Lincoln	10945217	99	\$1,000	Yes
NA	Lyon	11243218	99	\$1,000	Yes
NA	Lyon	11243218	99	\$1,000	Yes
NA	Mahnomen	14642208	99	\$1,000	Yes
NA	Mahnomen	14642208	99	\$1,000	Yes
NA	Murray	10740210	99	\$1,000	Yes
NA	Murray	10740210	99	\$1,000	Yes
NA	Nobles	10140225	99	\$1,000	Yes
NA	Nobles	10140225	99	\$1,000	Yes
NA	Norman	14647203	99	\$1,000	Yes

NA	Norman	14647203	99	\$1,000	Yes
NA	Pennington	15345230	99	\$1,000	Yes
NA	Pennington	15345230	99	\$1,000	Yes
NA	Pipestone	10846219	99	\$1,000	Yes
NA	Pipestone	10846219	99	\$1,000	Yes
NA	Polk	15449201	99	\$1,000	Yes
NA	Polk	15449201	99	\$1,000	Yes
NA	Pope	12336214	99	\$1,000	Yes
NA	Pope	12336214	99	\$1,000	Yes
NA	Red Lake	15144202	99	\$1,000	Yes
NA	Red Lake	15144202	99	\$1,000	Yes
NA	Rock	10345227	99	\$1,000	Yes
NA	Rock	10345227	99	\$1,000	Yes
NA	Roseau	16242207	99	\$1,000	Yes
NA	Roseau	16242207	99	\$1,000	Yes
NA	Stearns	12335216	99	\$1,000	Yes
NA	Stearns	12335216	99	\$1,000	Yes
NA	Swift	12042212	99	\$1,000	Yes
NA	Swift	12042212	99	\$1,000	Yes
NA	Traverse	12548220	99	\$1,000	Yes
NA	Traverse	12548220	99	\$1,000	Yes
NA	Wilkin	13647205	99	\$1,000	Yes
NA	Wilkin	13647205	99	\$1,000	Yes
NA	Yellow Medicine	11546221	99	\$1,000	Yes
NA	Yellow Medicine	11546221	99	\$1,000	Yes

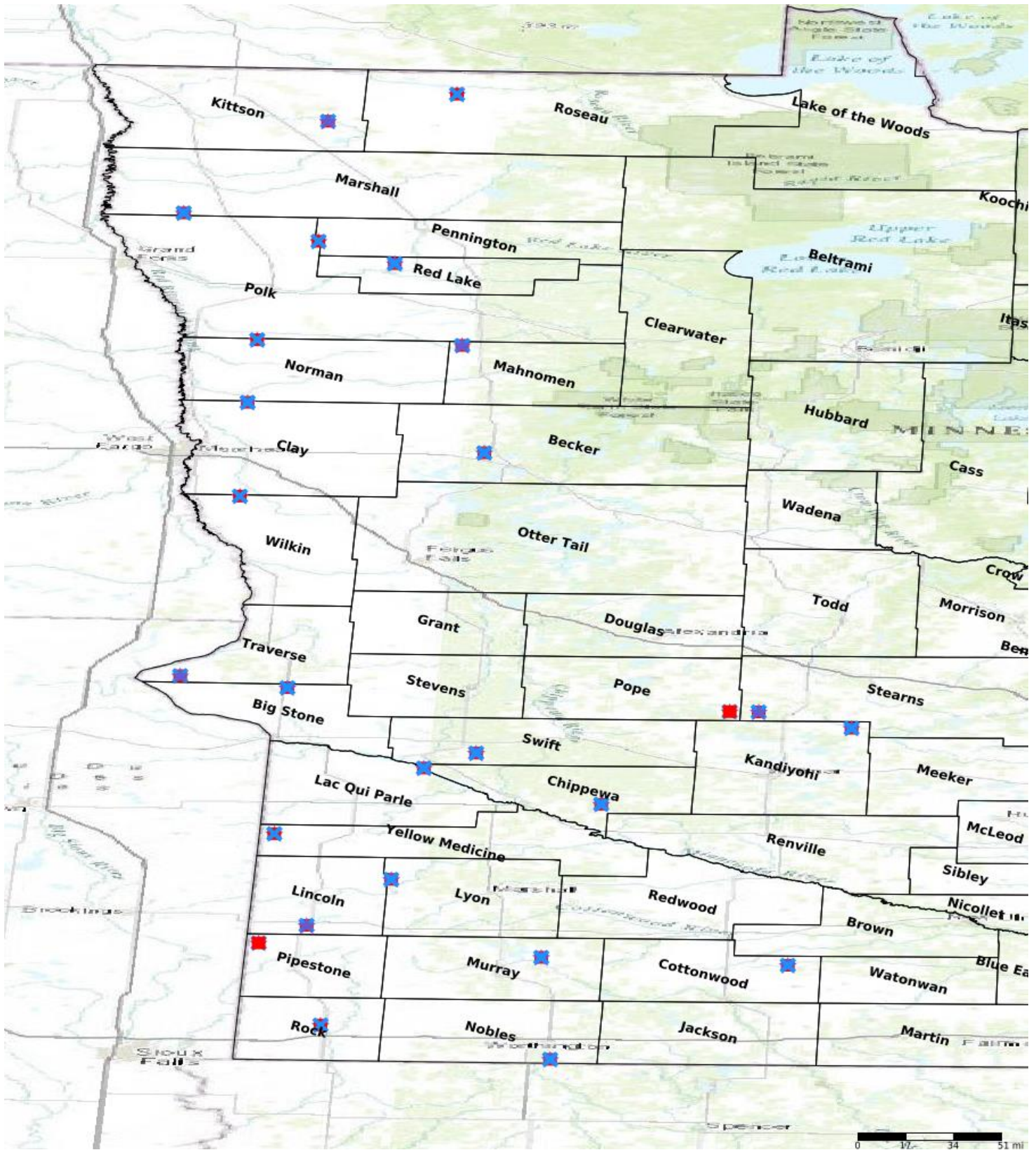
### Protect Parcels

Name	County	TRDS	Acres	Est Cost	Existing Protection
NA	Becker	13942201	99	\$1,000	No
NA	Big Stone	12446210	99	\$1,000	No
NA	Chippewa	11739213	99	\$1,000	No
NA	Clay	14247204	99	\$1,000	No
NA	Cottonwood	10734220	99	\$1,000	No
NA	Kandiyohi	12233215	99	\$1,000	No
NA	Kittson	16045206	99	\$1,000	No
NA	Lac qui Parle	11943211	99	\$1,000	No
NA	Lincoln	10945217	99	\$1,000	No
NA	Lyon	11243218	99	\$1,000	No
NA	Mahnomen	14642208	99	\$1,000	No
NA	Murray	10740210	99	\$1,000	No
NA	Nobles	10140225	99	\$1,000	No
NA	Norman	14647203	99	\$1,000	No
NA	Pennington	15345230	99	\$1,000	No
NA	Pipestone	10846219	99	\$1,000	No
NA	Polk	15449201	99	\$1,000	No
NA	Pope	12336214	99	\$1,000	No
NA	Red Lake	15144202	99	\$1,000	No
NA	Rock	10345227	99	\$1,000	No
NA	Roseau	16242207	99	\$1,000	No
NA	Stearns	12335216	99	\$1,000	No
NA	Swift	12042212	99	\$1,000	No
NA	Traverse	12548220	99	\$1,000	No
NA	Wilkin	13647205	99	\$1,000	No
NA	Yellow	11546221	99	\$1,000	No

	Medicine				
--	----------	--	--	--	--



# Parcel Map



- Protect in Easement
- ▲ Protect in Fee with PILT
- Protect in Fee W/O PILT
- ★ Restore
- ✕ Enhance
- ⊕ Other