

Lessard-Sams Outdoor Heritage Council

Fiscal Year 2022 / ML 2021 Request for Funding



Date: June 18, 2020

Program or Project Title: Shallow Lake & Wetland Protection & Restoration Program - Phase X (WA02)

Funds Requested: \$9,980,000

Manager's Name: Jon Schneider

Title: Director - Minnesota Conservation Program

Organization: Ducks Unlimited

Address: 311 East Lake Geneva Road

City: Alexandria, MN 56308

Office Number: 3207629916

Mobile Number: 3208150327

Email: jschneider@ducks.org

Website: www.ducks.org

County Locations: Big Stone, Clay, Cottonwood, Jackson, Kandiyohi, Lincoln, Lyon, McLeod, Murray, Nobles, Redwood, Sibley, and Swift.

Eco regions in which work will take place:

- Prairie

Activity types:

- Protect in Fee

Priority resources addressed by activity:

- Wetlands
- Prairie

Abstract:

This Phase 10 request funds Ducks Unlimited's prairie land acquisition and restoration program. DU will acquire and restore 1,200 acres of land containing drained wetlands in the Prairie Pothole Region of SW Minnesota for transfer to the Minnesota DNR for inclusion in the state WMA system. This land acquisition and restoration program focuses on restoring cropland with drained wetlands along shallow lakes and adjoining WMAs to help restore prairie wetland habitat complexes for breeding ducks and other wildlife. DNR will help seed uplands, and DU engineers will survey, design, and hire private sector contractors to restore drained wetlands.

Design and scope of work:

This is Phase 10 of Ducks Unlimited's ongoing program to both Acquire and Restore wetlands and prairie on land for sale adjacent to Minnesota DNRs State Wildlife Management Areas (WMA). DU works with willing seller private landowners adjacent to WMAs that have drained wetlands and converted prairie uplands, and land on shallow lakes in need of protection. DU purchases and holds land title through its Wetlands America Trust (WAT), DU's supporting land-holding fiduciary organization, of which DU is the sole corporate member.

Our goal is to help restore functioning prairie-wetland habitat complexes and complement other conservation efforts to protect intact native prairie. Our work addresses the habitat goals in Minnesota's Long-range Duck Recovery Plan, Minnesota's Prairie Conservation Plan, and the North American Waterfowl Management Plan. This work is time-sensitive because farmland adjacent to state WMAs is rarely offered for sale for conservation, and tracts are only available for a short time. DU works quickly, and has already spent most ML2016 and ML2017 OHF funds appropriated.

DU will work in cooperation with Minnesota DNR Section of Wildlife, and will coordinate with Pheasants Forever, other NGO partners, and local sportsmen clubs such as Swan Lake Area Wildlife Association and Cottonwood County Game and Fish League. Although

approval is not requested from county boards for DU land acquisitions, DU communicates frequently with county and township officials to ensure local official awareness of our conservation work, and routinely attends county board meetings to discuss questions. The acquisitions and restorations proposed represents the amount of work DU can accomplish in three to five years, is scalable, and benefits game and non-game wildlife species alike - from mallards to monarch butterflies.

Because 90% of Minnesota's prairie wetlands have been drained and 99% of prairie uplands converted in Minnesota, acquisition and restoration of prairie and small wetlands is critical – especially for breeding waterfowl in the Prairie Pothole Region of SW Minnesota where DU focuses our efforts. Furthermore, most remaining undrained wetlands here are in poor ecological condition due to massive landscape prairie conversion to cropland and wetland drainage that degrades both wetland condition and habitat function for prairie wildlife.

Although many of our remaining prairie wetlands and shallow lakes are contained within state WMAs or federal Waterfowl Production Areas (WPA), these small public land patches rarely provide optimal wildlife habitat due to their fragmented shape and small size. Similarly, most prairie shallow lakes are surrounded by a thin ribbon of uplands that fail to adequately buffer them from surrounding agricultural land runoff. Therefore, acquisition and restoration of drained wetlands and cultivated cropland in close proximity to our public lands will improve and buffer our public shallow lakes and remaining wetlands, and help create functioning prairie-wetland complexes of habitat for breeding ducks and other prairie wildlife.

DU professional engineers and biologists work closely with DNR field staff to plan and implement both robust prairie and wetland restorations, including diverse native forb/grass seed plantings and complex wetland restorations that often involve extensive tile drainage systems.

How does the proposal address habitats that have significant value for wildlife species of greatest conservation need, and/or threatened or endangered species, and list targeted species:

This proposal protects and restores prairie lands, which are identified as critical habitats for many “Species of Greatest Conservation Need” listed in Minnesota’s “Tomorrow’s Habitat for the Wild & Rare: An Action Plan for Minnesota Wildlife.” Specific species listed in the Action Plan as requiring prairie (page 255) include seven species of butterflies and three bird species that are native prairie specialists: chestnut-collared longspur, Sprague’s pipit, and Baird’s sparrow. The Prairie Parkland has 139 species listed on the SGCN with 13 of these species being unique to the section.

In addition to these specific wildlife species listed as SGCN examples in the Action Plan, restored prairie in the Prairie Parkland will also provide habitat of significant value for other species listed in Appendix B of the Action Plan. Restored and protected prairie will provide habitat of significant value for other SGCN including bird species: upland sandpiper, bobolink, burrowing owl, le conte’s sparrow, grasshopper sparrow, eastern meadowlark, swamp sparrow, sharp-tailed grouse, short-eared owl, northern harrier, dickcissel, Henslow’s sparrow, and Nelson’s sharp-tailed sparrow. Upland nesting waterfowl will also benefit including waterfowl listed as SGCN; northern pintail and lesser scaup, which have both seen declines in continental populations. Wetland associated birds such as trumpeter swan, black tern, American bittern, Wilson’s phalarope, and marbled godwit will benefit from wetlands either restored or buffered in the prairie landscape. Mammals such as northern grasshopper mouse and Richardson’s ground squirrels, reptiles such as lined snake and Blanding’s turtle, and amphibians such as northern cricket frog and common mudpuppy are listed as SGCN for the Prairie Parkland.

What is the degree of timing/opportunistic urgency and why it is necessary to spend public money for this work as soon as possible:

Most wetlands and nearly all native prairie uplands have been drained and converted for agricultural use in southern Minnesota. Most prairie public wildlife lands are small and fragmented, and do not provide viable productive patches of functioning habitat for prairie wildlife. Thus, restoration of prairie lands for sale is a key component of our overall Minnesota Prairie Plan conservation efforts to restore and protect wildlife habitat. This work is time-sensitive because private land adjacent to state WMAs and within DNR-approved state WMA project boundaries only rarely becomes available for sale to conservation interests, and thus it is important to be responsive to these land acquisition and restoration opportunities when they arise. Most private landowners will wait and work with conservation NGO land buyers for short time, but will not wait indefinitely for conservation funding, and a generation may pass before these key parcels become available for purchase again.

Describe how the proposal uses science-based targeting that leverages or expands corridors and complexes, reduces fragmentation or protects areas identified in the MN County Biological Survey:

Ducks Unlimited uses science to strategically focus on lands adjacent to existing state WMAs with restorable wetlands that build prairie-wetland complexes for breeding ducks or buffer managed shallow lakes. U.S. Fish & Wildlife Service’s “Thunderstorm Map” and “Restorable Wetlands Inventory” help determine importance to breeding waterfowl. We prioritize lands with restorable wetlands and prairie near WMAs with relatively high biological diversity and significance based on the Minnesota DNR County Biological Survey

(MCBS) to improve the ecological functionality of existing public WMAs for ducks. Examples include:

Minneota WMA Tract 8 in Jackson County is 136 acres adjacent to both the existing WMA and a WPA totaling 400 contiguous acres of wetland-grassland habitat. This area is a MCBS Site of Moderate Biodiversity due to abundant native prairie. This parcel would also protect approximately 5 acres of native prairie and part of a 45-acre wetland of Moderate Biological Significance. It supports over 41 breeding duck pairs per square mile and falls within a Minnesota Prairie Conservation Plan Strategic Habitat Complex. There are restorable uplands and numerous restorable wetlands on this property that will provide increased habitat for breeding waterfowl and other grassland birds.

Henry X WMA Tract 3 in Swift County is 40 acres nestled between Lake Hassel, a lake of High Biological Significance, and Henry X WMA, a site of Moderate Biological Significance. This complex supports over 31 breeding duck pairs per square mile and falls within a Minnesota Prairie Conservation Plan Corridor.

Thielke WMA Tract 4 in Big Stone County is 137 acres adjacent to the existing WMA. The complex supports over 31 breeding duck pairs per square mile and is near a complex of prairie potholes and priority shallow lakes identified by Minnesota DNR Wildlife. It is within a Minnesota Prairie Conservation Plan Corridor.

Winkler WMA Tract 5 in Jackson County is 41-acres adjacent to Winkler WMA. The property is a mixture of native prairie and wetland habitat. The WMA is a site of Moderate Biodiversity Significance and supports over 21 breeding ducks per square mile.

Which sections of the Minnesota Statewide Conservation and Preservation Plan are applicable to this project:

- H4 Restore and protect shallow lakes
- H5 Restore land, wetlands and wetland-associated watersheds

Which other plans are addressed in this proposal:

- Long Range Duck Recovery Plan
- Minnesota Prairie Conservation Plan

Describe how your program will advance the indicators identified in the plans selected:

Breeding ducks require prairie-wetland complexes containing at least 20% upland nesting cover and many small wetlands. Restoring and protecting viable patches of prairie and small wetlands around existing shallow lakes to create functioning prairie-wetland habitat complexes is a goal of both Minnesota's Long Range Duck Recovery Plan and Minnesota Prairie Conservation Plan. Thus, it is imperative to restore prairie and wetlands around existing public habitat patches to increase their patch size and connectivity, and ultimately their function to provide viable habitat complexes capable of producing prairie wildlife. Science indicates that breeding ducks require at least 20% or more of a four square-mile area be intact prairie grass with small wetlands to attract ducks and improve nesting success. Therefore, our goal is to acquire and restore land to increase the habitat patch size of existing state WMAs to help them become functioning, viable landscapes for breeding ducks and other prairie wildlife.

Which LSOHC section priorities are addressed in this proposal:

Prairie:

- Protect, enhance, or restore existing wetland/upland complexes, or convert agricultural lands to new wetland/upland habitat complexes

Describe how your program will produce and demonstrate a significant and permanent conservation legacy and/or outcomes for fish, game, and wildlife as indicated in the LSOHC priorities:

This program will permanently protect and restore prairie and wetlands adjacent to existing state WMAs to increase their patch size and viability as habitat for wildlife, and lands acquired and restored will be transferred to the Minnesota DNR for long-term management and public outdoor recreational use. The goal of this work is to create functioning prairie-wetland complexes for breeding and migrating waterfowl and other prairie wildlife species. It has taken over 100 years to fragment the prairie landscape, and it will take a long-term approach to restore wildlife habitat here, piece by piece and prairie wetland complex by complex. Therefore, our work will help add to the significant and permanent conservation legacy for the public, and in the long-term will result in improved and viable habitat patches and complexes for both wildlife and people alike.

Relationship to other funds:

- Not Listed

Describe the relationship of the funds:

Not Listed

Does this program include leverage in funds:

Yes

DU strives to use non-federal OHF expense to leverage federal NAWCA grant funds to further our conservation mission. However, NAWCA is highly competitive and complex, takes at least a year for funding approval, requires a firm match commitment, and proposal success is uncertain. Nonetheless, DU works closely with Minnesota DNR, and NGO partners to offer recent past state OHF acquisitions as non-federal match to leverage federal NAWCA funds to help fund OHF land restoration and also acquire additional lands. For example, several recent past OHF acquisitions were recently pledged as match in NAWCA proposals likely to be funded the future that will help pay for restoration costs on those lands acquired. Similarly, DU partners with DNR and other NGOs to request federal NAWCA grant funds to restore lands acquired through this OHF appropriation too by using OHF expense as non-federal match. Federal NAWCA and other leverage expense will be reported in our final report to the LSOHC at the end of this grant.

Per MS 97A.056, Subd. 24, Any state agency or organization requesting a direct appropriation from the OHF must inform the LSOHC at the time of the request for funding is made, whether the request is supplanting or is a substitution for any previous funding that was not from a legacy fund and was used for the same purpose:

This request does not supplant or substitute previous funding. This request is for new land acquisition funding to supplement traditional DU conservation activities and allow DU to expand our conservation program to buy/restore land, and will not supplant or substitute traditional private sources of funding for DU conservation programs.

Describe the source and amount of non-OHF money spent for this work in the past:

Appropriation Year	Source	Amount
2009	DU private	\$26,500
2010	DU private	0
2013	DU private	\$56,600
2015	DU private and federal NAWCA	\$475,000 (ongoing)
2016	DU private and federal NAWCA	\$200,000 (ongoing)
2017	DU private and federal NAWCA	\$200,000 (ongoing)
2018	DU private and federal NAWCA	\$90,000 (ongoing)
2019	DU private and federal NAWCA	\$113,000 (ongoing)
2020	DU private and federal NAWCA	\$90,000+ (pending)

How will you sustain and/or maintain this work after the Outdoor Heritage Funds are expended:

All lands acquired will be transferred to the Minnesota DNR for inclusion in the state's Wildlife Management Area system. Thus, Minnesota DNR Wildlife land managers will sustain and maintain the prairie and wetlands acquired and restored by Ducks Unlimited in perpetuity, and manage them to provide optimal wildlife habitat and for public use.

Explain the things you will do in the future to maintain project outcomes:

Year	Source of Funds	Step 1	Step 2	Step 3
2022	DNR G&F Fund, OHF	Mow restored prairie for weed control	Periodically burn native prairie every 5 years as needed	Assess and manage water levels in larger restored wetlands as vegetation and ecological conditions warrant action

Identify indicator species and associated quantities this habitat will typically support:

Ducks Unlimited proposes to acquire and restore 300 acres of wetlands and 1,200 acres of prairie uplands adjacent to existing state WMAs to improve their function as prairie-wetland habitat complexes for waterfowl and many other prairie and wetland-dependent wildlife species. Science-based guidance provided by Minnesota DNR indicates that 300 acres of wetlands and 1,200 acres of prairie uplands may be estimated to:

Support approximately 122 pairs of mallards based on the biological model of the Upper Mississippi River Great Lakes Joint Venture of the North American Waterfowl Management Plan that indicates one pair of mallards needs 2.47 acres of wetlands with adequate adjacent upland nesting habitat to support population growth;

Support at least 2 or more pairs of trumpeter swans assuming one pair for every 150 wetland acres, depending on the size, type, and number of wetland basins restored or enhanced;

Support up to 706 pairs of bobolinks and 571 pairs of grasshopper sparrows, based on guidance that breeding territory size of bobolinks and grasshopper sparrows is 1.7 and 2.1 acres, respectively, in high quality habitat in Wisconsin;

Produce approximately 400 harvested rooster pheasants based on ratios of CRP acres to pheasant harvest in Minnesota; and,

Contribute 3,600 to 9,600 monarch butterflies to the overwintering population, assuming 100-250 stems of milkweed plants per prairie acre restored.

Activity Details

Requirements:

If funded, this proposal will meet all applicable criteria set forth in MS 97A.056 - **Yes**

Will county board or other local government approval be formally sought prior to acquisition, per 97A.056 subd 13(j) - **No**

DU strives to notify and discuss land acquisition plans prior to land acquisition closings. Discussions with local county and other government officials will be held in conjunction with acquiring lands once negotiations result in a purchase agreement. Initial notification will include initial phone contact to individual board members representing the location of the land to be acquired. Official written notification to township and county boards will be made at least 30 days before closing. Because land acquisition deals are very private and sensitive matters, disclosing details in advance of purchase agreements can jeopardize land deals with private landowners. Because requesting formal local approval involves elected officials voting on private land deals, which invites local politics and makes private landowner intentions public, DU does not seek local government approval of our land acquisitions. Instead, DU contacts and meets with county and township boards in person to inform and discuss pending plans to ensure local government awareness of the public benefits of our land acquisition and restoration work, and changes in future tax payments. DU pays taxes in full at the county assessed rate during our hold time, and because state PILT amounts have been higher than previous assessed county tax rates for land acquired by DU in the Prairie Section of SW Minnesota, county boards have been very pleased with DU land acquisitions for the Minnesota DNR.

Is the land you plan to acquire (fee title) free of any other permanent protection - **No**

Some tracts may contain a USFWS wetland easement protecting intact wetland basins, prohibiting wetland drainage, burning, and filling, but otherwise allowing farming when dry so the value of these areas will be accommodated and addressed in the appraisal.

Do you anticipate federal funds as a match for this program - **Yes**

Are the funds confirmed - **No**

What is the approximate date you anticipate receiving confirmation of the federal funds - **Beginning in July 2021 via future NAWCA grants leveraged to help restore lands acquired via OHF.**

Land Use:

Will there be planting of corn or any crop on OHF land purchased or restored in this program - **Yes**

Explain

DU purchases land in Minnesota to protect and restore prairie, wetlands, and shallow lake shoreland for ducks and other prairie and wetland-dependent wildlife. Lands acquired will be transferred to the Minnesota DNR for inclusion in state Wildlife Management Areas (WMA) for long-term management and public use. Initial Development and Restoration Plans are developed in partnership with Minnesota DNR and area wildlife manager approval according to WMA management plan goals. The primary purposes of WMAs are to develop and manage habitat for the production of wildlife and for compatible outdoor recreation. To fulfill those goals, the DNR may use limited farming specifically to enhance or benefit the management of state lands for wildlife.

Lands proposed to be acquired for prairie restoration as WMAs may utilize limited farming to prepare previously farmed sites for

native plant seeding. This is the standard prairie restoration practice across the Midwest. On a small percentage of WMAs (less than 2.5%), DNR uses farming to provide a winter food source for a variety of wildlife species in agriculture-dominated landscapes largely devoid of winter food sources. DU will work closely with DNR through our cooperative acquisition and restoration planning process to avoid purchasing tracts where DNR requires placement of food plots and instead defers those to DNR to acquire directly, as restoration of prairie and wetlands for waterfowl is our strategic focus and mission.

Most lands to be acquired and restored through this program will be farmland with cropped fields, which DU will restore to prairie and wetland habitat. Very limited short-duration row-cropping of soybeans or use of oats as a cover crop, or other farming activity may be required immediately after acquisition prior to restoration via native prairie grass and forb seeding to rid the soil of residual herbicides that limit native plant growth and excess nutrients that promote weeds. Increasingly, farmers are using herbicides with an 18-month carryover residual effect, that requires an additional year of farming with other compatible herbicides before native plants can be seeded. DU strives to minimize this circumstance by working with private landowners to guide their final year of cropping prior to selling, but arranging such is not always possible and use of cover crops or an additional year of "safe" row cropping in soybeans is sometimes required. DU will strive to use non-GMO treated seed whenever and wherever possible if planting of crops is required.

Is this land currently open for hunting and fishing - **No**

Will the land be open for hunting and fishing after completion - **Yes**

No variations anticipated. All lands to be acquired are in rural areas and will be included in state Wildlife Management Areas, and open to public use as per Minnesota DNR rules.

Are there currently trails or roads on any of the acquisitions on the parcel list - **No**

Will new trails or roads be developed or improved as a result of the OHF acquisition - **No**

Will the land that you acquire (fee or easement) be restored or enhanced within this proposals funding and availability? - **Yes**

Land Use:

Have you received OHF dollars in the past through LSOHC? - **Yes**

Past appropriations and spending to date:

Apprp Year	Approp Amount Received	Approp Amount Spent to Date	Leverage as Reported in AP/th>	Leverage Realized to Date	Total Acres Affected in AP	Total Acres Affected to Date	Program Complete and Final Report Approved?
2009	450000	450000	0	26500	100	63	Yes
2010	2625000	2436200	0	0	750	352	Yes
2013	3530000	3530000	100000	56600	400	567	No, pending in 2021
2015	9040000	8660000	325000	475000	900	1004	No, but pending in 2021
2016	5801000	5800000	204000	200000	600	826	No, but pending in 2021
2017	5750000	5740000	200000	200000	600	764	No, but pending in 2021
2018	4770000	3660000	90000	30000	550	603	No
2019	6150000	3300000	113000	13000	560	542	No
2020	4608000	0	90000	0	516	0	No, new grant, yet to start

Accomplishment Timeline

Activity	Approximate Date Completed
Appraise and acquire lands in fee-title.	June 2024
Restore lands acquired and transfer to Minnesota DNR.	June 2029

Budget Spreadsheet

Total Amount of Request: \$9,980,000

Budget and Cash Leverage

BudgetName	LSOHC Request	Anticipated Leverage	Leverage Source	Total
Personnel	\$780,000	\$90,000	DU Private & NAWCA	\$870,000
Contracts	\$1,600,000	\$300,000	DU private and federal USFWS NAWCA	\$1,900,000
Fee Acquisition w/ PILT	\$6,690,000	\$0		\$6,690,000
Fee Acquisition w/o PILT	\$0	\$0		\$0
Easement Acquisition	\$0	\$0		\$0
Easement Stewardship	\$0	\$0		\$0
Travel	\$90,000	\$10,000	DU private and federal USFWS NAWCA	\$100,000
Professional Services	\$120,000	\$0		\$120,000
Direct Support Services	\$80,000	\$10,000	DU private and federal USFWS NAWCA	\$90,000
DNR Land Acquisition Costs	\$100,000	\$0		\$100,000
Capital Equipment	\$0	\$0		\$0
Other Equipment/Tools	\$30,000	\$0		\$30,000
Supplies/Materials	\$90,000	\$10,000	DU private and federal USFWS NAWCA	\$100,000
DNR IDP	\$400,000	\$0		\$400,000
Total	\$9,980,000	\$420,000	-	\$10,400,000

Personnel

Position	FTE	Over # of years	LSOHC Request	Anticipated Leverage	Leverage Source	Total
Manager - Grant Administration and Program Coordination	0.30	3.00	\$90,000	\$0		\$90,000
Biologists and Engineers - Acquire & Restore Land	2.00	3.00	\$690,000	\$90,000	DU Private & NAWCA	\$780,000
Total	2.30	6.00	\$780,000	\$90,000	-	\$870,000

Amount of Request: \$9,980,000

Amount of Leverage: \$420,000

Leverage as a percent of the Request: 4.21%

DSS + Personnel: \$860,000

As a % of the total request: 8.62%

Easement Stewardship: \$0

As a % of the Easement Acquisition: -%

How did you determine which portions of the Direct Support Services of your shared support services is direct to this program:

Minnesota DNR grants staff previously reviewed and approved DU accounting methodology for Direct Support Services, which are calculated and included in DU staff costs. DU Direct Support Services constitute approximately 10% of DU overall staff costs on average among DU conservation staff billing categories. DU breaks out and invoices for Direct Support Service expenses approved by DNR for reimbursement separately from Personnel expenses. In accordance with 2 CFR 200, DU uses the direct allocation method of allocating costs to programs and final cost objectives. This process of allocating costs is accomplished through the use of hourly rates. The direct cost of activities, including direct support expenses, is included in these hourly rates. The rates are comprised of costs for salaries, benefits, office space, general insurance, support staff, office supplies, and other various direct expenses incurred at the regional offices and conservation department at the home office. All costs are assigned to conservation projects (net of applicable personnel and other costs that are non-conservation related.) Hourly charges represent the amount that DU charges conservation projects per hour for each staff member working on the project. These costs represent expenses that directly support the labor cost necessary for the development of a specific water/wetlands conservation project.

What is included in the contracts line?

The Contracts line is for private earth-moving contractor charges to restore and enhance wetlands and grasslands on lands acquired. Wetland restoration in southern Minnesota is very expensive and requires engineering due to intensive landscape drainage via complex networks of private/public tile/ditches that affect private neighbors and public roads.

Does the amount in the travel line include equipment/vehicle rental? - No

Explain the amount in the travel line outside of traditional travel costs of mileage, food, and lodging:

None - DU travel costs consist of in-state mileage, food, and lodging only (primarily mileage and lodging for land manager, biologists, and engineering field staff).

I understand and agree that lodging, meals, and mileage must comply with the current MMB Commissioner Plan: - Yes

Describe and explain leverage source and confirmation of funds:

DU will work diligently to leverage OHF grant funds with additional sources of private support from individuals, foundations, and corporations and via federal NAWCA grants for specific projects, especially by using OHF grant land acquisition expense to leverage federal grants to restore wetlands and prairie uplands on lands acquired.

Does this proposal have the ability to be scalable? - Yes

Tell us how this project would be scaled and how administrative costs are affected, describe the "economy of scale" and how outputs would change with reduced funding, if applicable:

This project can be scaled approximately proportionally to funding recommended on a cost per acre basis for both land acquisition and restoration. Administrative costs can be reduced too if less funding is recommended than requested, albeit not proportionately due to base costs of program management, grant administration, and reporting.

Has funding for these positions been requested in the past? - Yes

Please explain the overlap of past and future staffing and position levels previously received and how that is coordinated over multiple years?

DU assigns site-specific, unique project numbers to each land acquisition or wetland restoration project, and biologist/engineering staff charge time and expenses to these specific project number codes so charges are tracked to specific sites by each individual. Furthermore, charges are only billed to one OHF grant or another, therefore staff charges can be spread among multiple projects funded by multiple grants. Despite DU staff working on multiple projects and grants throughout the year, DU staff cost invoicing is OHF grant-specific. This allows the team of DU 12+ DU staff working in Minnesota to work on multiple projects throughout the state with multiple OHF grants throughout the year.

DU strives to minimize overlap among OHF grants for the same program, and we strive to spend acquisition funds from earlier grants first before more recent grants. Restoration work overlaps by nature, however, due to the time it takes to plan and restore land. Currently, we anticipate completing spending of Phase 8 acquisition funds in 2020 and Phase 9 in 2021, thus will be spent out of OHF acquisition funding by end of 2021.

What is the anticipated number of fee title acquisition transactions?

We anticipate purchasing 8-10 land tracts for Minnesota DNR, depending on size, location, and purchase price of willing-seller lands for which offers are accepted.

Output Tables

Table 1a. Acres by Resource Type

Type	Wetlands	Prairies	Forest	Habitats	Total
Restore	0	0	0	0	0
Protect in Fee with State PILT Liability	300	1,200	0	0	1,500
Protect in Fee W/O State PILT Liability	0	0	0	0	0
Protect in Easement	0	0	0	0	0
Enhance	0	0	0	0	0
Total	300	1,200	0	0	1,500

Table 1b. How many of these Prairie acres are Native Prairie?

Type	Native Prairie
Restore	0
Protect in Fee with State PILT Liability	15
Protect in Fee W/O State PILT Liability	0
Protect in Easement	0
Enhance	0
Total	15

Table 2. Total Requested Funding by Resource Type

Type	Wetlands	Prairies	Forest	Habitats	Total
Restore	\$0	\$0	\$0	\$0	\$0
Protect in Fee with State PILT Liability	\$2,000,000	\$7,980,000	\$0	\$0	\$9,980,000
Protect in Fee W/O State PILT Liability	\$0	\$0	\$0	\$0	\$0
Protect in Easement	\$0	\$0	\$0	\$0	\$0
Enhance	\$0	\$0	\$0	\$0	\$0
Total	\$2,000,000	\$7,980,000	\$0	\$0	\$9,980,000

Table 3. Acres within each Ecological Section

Type	Metro/Urban	Forest/Prairie	SE Forest	Prairie	Northern Forest	Total
Restore	0	0	0	0	0	0
Protect in Fee with State PILT Liability	0	0	0	1,500	0	1,500
Protect in Fee W/O State PILT Liability	0	0	0	0	0	0
Protect in Easement	0	0	0	0	0	0
Enhance	0	0	0	0	0	0
Total	0	0	0	1,500	0	1,500

Table 4. Total Requested Funding within each Ecological Section

Type	Metro/Urban	Forest/Prairie	SE Forest	Prairie	Northern Forest	Total
Restore	\$0	\$0	\$0	\$0	\$0	\$0
Protect in Fee with State PILT Liability	\$0	\$0	\$0	\$9,980,000	\$0	\$9,980,000
Protect in Fee W/O State PILT Liability	\$0	\$0	\$0	\$0	\$0	\$0
Protect in Easement	\$0	\$0	\$0	\$0	\$0	\$0
Enhance	\$0	\$0	\$0	\$0	\$0	\$0
Total	\$0	\$0	\$0	\$9,980,000	\$0	\$9,980,000

Table 5. Average Cost per Acre by Resource Type

Type	Wetlands	Prairies	Forest	Habitats
Restore	\$0	\$0	\$0	\$0
Protect in Fee with State PILT Liability	\$6,667	\$6,650	\$0	\$0
Protect in Fee W/O State PILT Liability	\$0	\$0	\$0	\$0
Protect in Easement	\$0	\$0	\$0	\$0
Enhance	\$0	\$0	\$0	\$0

Table 6. Average Cost per Acre by Ecological Section

Type	Metro/Urban	Forest/Prairie	SE Forest	Prairie	Northern Forest
Restore	\$0	\$0	\$0	\$0	\$0
Protect in Fee with State PILT Liability	\$0	\$0	\$0	\$6,653	\$0
Protect in Fee W/O State PILT Liability	\$0	\$0	\$0	\$0	\$0
Protect in Easement	\$0	\$0	\$0	\$0	\$0
Enhance	\$0	\$0	\$0	\$0	\$0

Automatic system calculation / not entered by managers

Target Lake/Stream/River Feet or Miles

0

I have read and understand Section 15 of the Constitution of the State of Minnesota, Minnesota Statute 97A.056, and the Call for Funding Request. I certify I am authorized to submit this proposal and to the best of my knowledge the information provided is true and accurate.

Outcomes

Programs in prairie region:

- Protected, restored, and enhanced shallow lakes and wetlands *Land bordering shallow lakes and land containing drained wetlands will be acquired and restored back to functioning wetlands for waterfowl with native grass and forb wildflower grassland surrounding them as habitat for pollinators, migratory birds, and resident wildlife. Lands will transferred into the state Wildlife Management Area system to provide additional prairie habitat for migratory species and public use, both of which will be monitored by Minnesota DNR. Restored wetland basins will be monitored by DNR area wildlife field staff, and managed to optimize wetland habitat conditions. Prairie uplands will be managed to minimize trees and encourage native plants.*

Parcel List

Explain the process used to select, rank and prioritize the parcels:

Ducks Unlimited prioritizes purchase of prairie farmland with restorable wetlands adjacent to existing public lands, and land adjacent to shallow lakes managed by DNR for inclusion in the Minnesota DNR's state Wildlife Management Area (WMA) system. DU focuses on acquiring and restoring converted/cultivated prairie with drained wetlands adjacent to existing WMAs to enlarge existing WMAs to create functioning prairie-wetland habitat complexes that benefit ducks and other prairie wildlife. This work also complements other conservation efforts to protect intact native prairie.

DU works in close partnership with the Minnesota DNR Section of Wildlife and coordinates with other national and state NGO partners including Pheasants Forever, The Conservation Fund, and The Nature Conservancy to periodically review parcels for sale that DNR desires for WMAs. DU selects priority prairie parcels in the southern region that are highly regionally ranked by DNR and that add a good mix of prairie and wetland restorations to existing WMAs.

DU strategically prioritizes tracts of land with restorable wetlands that DU wetland engineers can survey, design, and restore, especially those adjoining existing patches of prairie and wetland habitat that are not functioning as viable prairie-wetland complexes due to their small size and fragmented shape. DU also prioritizes land bordering shallow lakes managed by DNR in order to buffer those shallow, ecologically-sensitive wildlife lakes and help expand the prairie-wetland complex around them.

Section 1 - Restore / Enhance Parcel List

No parcels with an activity type restore or enhance.

Section 2 - Protect Parcel List

Clay

Name	TRDS	Acres	EstCost	Existing Protection?	Hunting?	Fishing?
Goose Prairie WMA - Tract 10	14144222	61	\$300,000	No	Full	Full

Cottonwood

Name	TRDS	Acres	EstCost	Existing Protection?	Hunting?	Fishing?
Little Swan Lake WMA - Tract 14	10635218	17	\$125,000	No	Full	Full

Jackson

Name	TRDS	Acres	EstCost	Existing Protection?	Hunting?	Fishing?
Minneota WMA - Tract 8	10136229	136	\$820,000	No	Full	Full
Winkler WMA - Tract 5	10437206	41	\$60,000	No	Full	Full

Kandiyohi

Name	TRDS	Acres	EstCost	Existing Protection?	Hunting?	Fishing?
Whitefield WMA - Tract 5	11835229	236	\$1,200,000	No	Full	Full

Lincoln

Name	TRDS	Acres	EstCost	Existing Protection?	Hunting?	Fishing?
Hopeful WMA - Tract 16	10943218	200	\$1,400,000	No	Full	Full
Hopeful WMA - Tract 9	10944210	220	\$1,100,000	No	Full	Full
Shookatan WMA - Tract 19	11146203	239	\$1,164,800	No	Full	Full

Lyon

Name	TRDS	Acres	EstCost	Existing Protection?	Hunting?	Fishing?
Greenhead WMA - Tract 2	10 940 221	119	\$500,000	No	Full	Full
Meadow Creek WMA - Tract 20	11 140 232	223	\$1,560,000	No	Full	Full

McLeod

Name	TRDS	Acres	EstCost	Existing Protection?	Hunting?	Fishing?
Kujas WMA - Tract 2	11 430 235	156	\$340,000	No	Full	Full

Murray

Name	TRDS	Acres	EstCost	Existing Protection?	Hunting?	Fishing?
Dovray WMA - Tracts 19/19a	10 740 213	165	\$1,000,000	No	Full	Full
Great Oasis WMA - Tract 17	10 742 210	334	\$1,900,000	No	Full	Full
Ruthton WMA - Tract 1A	10 843 207	180	\$1,200,000	No	Full	Full

Nobles

Name	TRDS	Acres	EstCost	Existing Protection?	Hunting?	Fishing?
Herlein-Boote WMA - Tract 78	10 240 218	160	\$1,100,000	No	Full	Full

Redwood

Name	TRDS	Acres	EstCost	Existing Protection?	Hunting?	Fishing?
Daubs Lake WMA - Tract 2/2a	11 137 211	160	\$1,300,000	No	Full	Full

Sibley

Name	TRDS	Acres	EstCost	Existing Protection?	Hunting?	Fishing?
Indian Lake WMA - Tract	11 329 228	67	\$469,000	No	Full	Full

Swift

Name	TRDS	Acres	EstCost	Existing Protection?	Hunting?	Fishing?
Henry XWMA - Tract 3	12 239 217	40	\$160,000	No	Full	Full
Lake Moore WMA - Tract 1	12 239 214	233	\$900,000	No	Full	Full

Section 2a - Protect Parcel with Bldgs

Big Stone

Name	TRDS	Acres	EstCost	# Bldgs?	Bldg Improve Desc	Value of Bldg	Disposition of Improvements
Thielke Lake WMA - Tract 4	12 246 203	134	\$650,000	1	Old metal farm equipment shed on concrete slab to be removed, materials will be salvaged/sold if possible.	\$0	Demolish

Kandiyohi

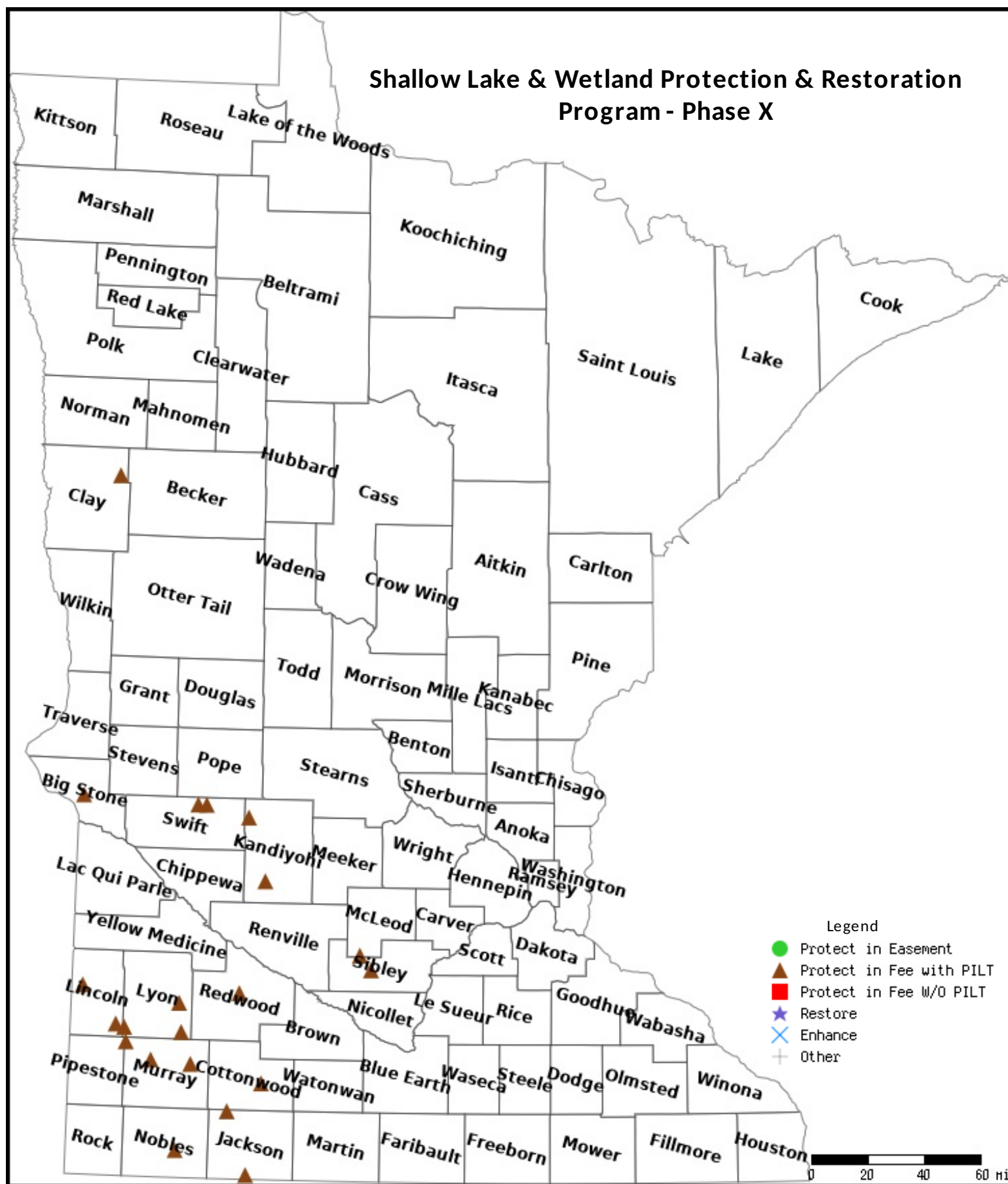
Name	TRDS	Acres	EstCost	# Bldgs?	Bldg Imprpove Desc	Value of Bldg	Disposition of Improvements
Cabinrock WMA - Tract 7	12136205	81	\$400,000	3	Old farm house, garage/shed, and barn in middle of property, must be removed for full habitat restoration	\$30,000	Demolish

Section 3 - Other Parcel Activity

No parcels with an other activity type.

Parcel Map

Shallow Lake & Wetland Protection & Restoration Program - Phase X



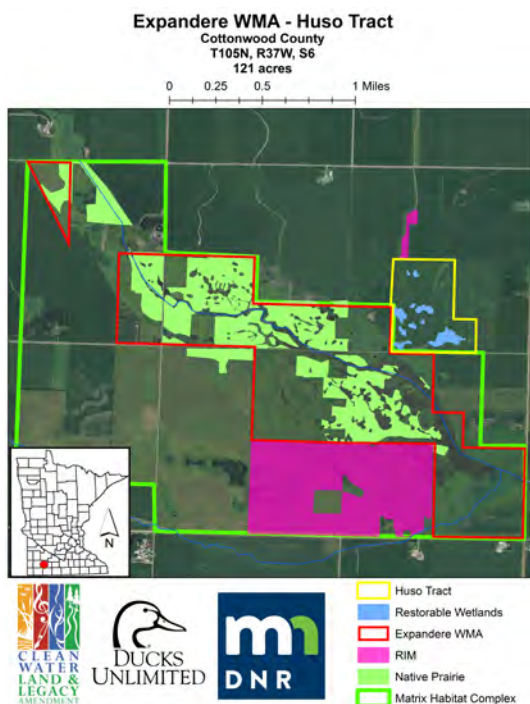
Data Generated From Parcel List



SHALLOW LAKE & WETLAND PROTECTION & RESTORATION PROGRAM - PHASE X

Proposal Request: \$+,+*0,000

Proposal Abstract: This Phase #1 request funds Ducks Unlimited's prairie land acquisition and restoration program. DU will acquire and restore 1,500 acres of land containing drained wetlands in the Prairie Pothole Region of SW Minnesota for restoration and transfer to the Minnesota DNR for inclusion in the state WMA system. This land acquisition and restoration program focuses on restoring cropland along shallow lakes and adjoining WMAs containing wetlands to help restore prairie wetland habitat complexes for breeding ducks and other wildlife. DNR will help seed uplands, and DU engineers will survey, design, and hire private sector contractors to restore wetlands.





SHALLOW LAKE & WETLAND PROTECTION & RESTORATION PROGRAM - PHASE X

