

Lessard-Sams Outdoor Heritage Council

Fiscal Year 2022 / ML 2021 Request for Funding



Date: May 28, 2020

Program or Project Title: Anoka Sand Plain Habitat Conservation - Phase 7 (PRE03)

Funds Requested: \$5,838,200

Manager's Name: Wiley Buck
Organization: Great River Greening
Address: 251 Starkey Street
Address 2: Ste 2200
City: Saint Paul, MN 55107
Office Number: 651-272-3981
Mobile Number: 651-775-8759
Email: wbuck@greatrivergreening.org

County Locations: Anoka, Benton, Chisago, Isanti, Morrison, and Sherburne.

Eco regions in which work will take place:

- Northern Forest
- Forest / Prairie Transition
- Metro / Urban

Activity types:

- Protect in Easement
- Restore
- Enhance

Priority resources addressed by activity:

- Wetlands
- Forest
- Prairie
- Habitat

Abstract:

The Anoka Sand Plain (ASP) Partnership will protect 540 acres of habitat through conservation easement, and restore/enhance 1257 acres of Prairie/Oak Savanna, Wetland, and fire-dependent Woodland/Forest habitats within the ASP Ecological Region program boundary, and rescue 100,000 rare plants to protected areas. These actions will increase biodiversity, habitat connectivity, recreational opportunities, and landscape resilience, which align with the ASP Partnership's strategic plan, DNR Wildlife Action Plan and LSOHC Section priorities. GRG, ACD, MLT, NWT, and TNC are the five direct recipient organizations, with significant match from USFWS, Morrison County, and landowner donation of easement value.

Design and scope of work:

The Anoka Sand Plain Ecoregion watershed, capturing portions of the Metropolitan Urbanizing, Forest/Prairie Transition, and Northern Forest sections, is a marvelously complex mosaic of habitats, home to quality prairie and savanna, wetlands, fire-dependent forests and woodlands, designated wild and scenic rivers, and a high concentration of rare species. The amount of high quality remnant habitat in the ASP is remarkable given its proximity to Twin Cities Metropolitan area. While the location of the ASP provides easy access for many Minnesotans, the associated stressors threaten the ASP's sustainability. The ecological diversity of the ASP is threatened by invasive species and development pressure.

The diversity in this rich and important mosaic, complemented by its close proximity to most Minnesotans, is reflected in the number

and diversity of organizations that identify the area as a priority, combining our specific knowledge and stakeholder engagement to join forces for its conservation. The robust ASP Partnership is committed to protecting, restoring and enhancing this spectacular region so it can continue to provide vital habitat, invaluable ecological services, and high-quality recreational and engagement opportunities. Bringing clarity and focus to our Phase 7 and all of our work in this complex area is the ASP Partnership's 10-year strategic plan, which aligns with other important plans to identify priority habitats, opportunities, and centers of biodiversity, and a plan of action with measurable goals.

With this funding, Anoka Conservation District (ACD), Great River Greening (GRG), Minnesota Land Trust (MLT), National Wild Turkey Federation (NWTF) and The Nature Conservancy (TNC), with support from other partners, will secure conservation easements on 540 acres to expand habitat cores and corridors, and complete restoration and enhancement (R/E) on more than 1250 acres of public and protected private sites. Habitats including prairie/savanna grasslands, woodland, and non-forested and peat wetlands .

Results will be achieved by restoring historic hydrology, conducting invasive species removal, prescribed burning, thinning, seeding, and planting including the launch of a Rare Plant Rescue program to transplant up to 100,000 rare plants that would otherwise be destroyed by development. Our program will create and improve critical habitat by increasing biodiversity and landscape resilience. It will also benefit water quality and quantity, improve community resiliency, and increase recreational opportunities.

How does the proposal address habitats that have significant value for wildlife species of greatest conservation need, and/or threatened or endangered species, and list targeted species:

The Anoka Sand Plain serves as a refuge for many globally unique species and rare plant communities, including roughly one-third of Minnesota's listed rare plant and animals, and 97 known or predicted SGCN, and 131 federally or state endangered, threatened, or special concern. The MN County Biological Survey ranks 72,000 acres in the ASP as Outstanding or High Biodiversity. This proposal addresses LSOHC priorities by protecting and restoring/enhancing oak savanna, prairie, riparian, woodlands, and non-forested wetlands.

For ASP7, we are proposing R/E on following DNR Wildlife Action Plan Target Habitats and Target Species habitats in the Anoka Sand Plain: 215 acres of prairie/savanna grasslands; 698 acres of non-forested wetlands/peatlands; and 344 acres woodlands.

SGCN SPECIES ASSOCIATED WITH THESE ASP7 HABITATS ARE:

8 BIRD SPECIES:

Eastern meadowlark
Grasshopper sparrow
Brown Thrasher
Eastern towhee
Eastern whip-poor-will
Field sparrow
Lark sparrow
Red-headed woodpecker

2 MAMMAL SPECIES:

American badger
Plains pocket mouse

4 REPTILE SPECIES:

Blanding's turtle
Gophersnake
Plains hog-nosed snake
Smooth greensnake

5 INVERTEBRATE SPECIES:

Dusted skipper
Leonard's skipper
Uncas skipper
Pelegrina arizonsis (a jumping spider)
Northern barrens tiger beetle

STATE LISTED (T/E/SC) OR OTHERWISE RARE SPECIES DOCUMENTED AT ASP7 IDENTIFIED R/E PROJECT SITES:

8 BIRD SPECIES:

Red-shouldered Hawk
Hooded Warbler
American Bittern
Lark Sparrow
Golden winged warbler
Veery
Acadian flycatcher
Cerulean warbler

2 MAMMAL SPECIES:

Northern Long-eared Bat
Plains Pocket Mouse

4 REPTILE SPECIES:

Eastern Hognose Snake
Gopher snake
Blanding's turtle
Plains Hognose Snake

1 INVERTEBRATE SPECIES:

A Jumping Spider

15 VASCULAR PLANT SPECIES:

Yellow Bartonia
Water-willow
Rhombic Evening Primrose
Bristle-berry
Ginseng
Tuberclad rein-orchid
Cross-leaved Milkwort
Kitten-tails
Hill's Thistle
Blunt Sedge
Autumn Fimbristylis
Swamp Blackberry
Clinton's Bulrush
Cowbane
Small-leaved pussytoes

RARE PLANT RESCUE PROGRAM:

An estimated 100,000 specimens of the following 8 VASCULAR PLANT SPECIES are anticipated to be successfully translocated to protected habitats in this program:

Bristleberry
Cross-leaved Milkwort
Kitten-tails
Lance-leaf Violet
Swamp Blackberry
Toothcup
Tuberclad Rein Orchid
Twisted Yellow-eyed Grass

What is the degree of timing/opportunistic urgency and why it is necessary to spend public money for this work as soon as possible:

The amount of high quality remnant habitat in the ASP is remarkable given its proximity to Twin Cities Metropolitan and St. Cloud areas.

While the location of the ASP provides easy access for the majority of Minnesotans, the associated stressors threaten the ASP's sustainability. The ecological diversity of the ASP is threatened by invasive species and development pressure. State-wide growth through 2045 is projected at 7% while projected growth in Anoka and Sherburne counties is 14% and 24% respectively. Land protection will protect remaining remnant habitats, buffer high quality habitat cores and increase habitat corridors and landscape resiliency. Restoration and enhancement efforts will prevent habitat degradation and increase biodiversity. The Rare Plant Rescue Program will transplant thousands of rare plants from sites slated for permitted development.

Describe how the proposal uses science-based targeting that leverages or expands corridors and complexes, reduces fragmentation or protects areas identified in the MN County Biological Survey:

The ASP Partnership 10 - Year Strategic Conservation Action Plan utilizes multiple-criteria GIS analyses to identify and prioritize critical areas for habitat connectivity, SGCN, biodiversity, and native plant communities. Data layers include: 1. Top 95% of SGCN population composite 2. Good or excellent populations of state or federally endangered and threatened species 3. Richness hotspots falling outside the top 95 percent of populations 4. Marxan outputs from the Scientific and Natural Area strategic plan 5. Sites of Biodiversity Significance that intersect with Marxan outputs 6. Native plant communities: Minnesota Department of Nature Resources – Division of Ecological and Water Resources – Biological Survey. MNDNR Native Plant Communities. 2014.

The sites and actions included in this proposal will combat the threats of habitat fragmentation, degradation and invasive species. These were identified in Minnesota's Wildlife Action Plan and LSOHC: 25-year framework as the priority actions needed to address significant challenges facing SGCN and landscape resilience in the ASP region. A total of 450 acres of R/E are on MCBS areas identifies as High or Outstanding Biodiversity, and an estimated 200 additional acres protected.

Which sections of the Minnesota Statewide Conservation and Preservation Plan are applicable to this project:

- H1 Protect priority land habitats
- H5 Restore land, wetlands and wetland-associated watersheds

Which other plans are addressed in this proposal:

- Minnesota's Wildlife Action Plan 2015-2025
- Outdoor Heritage Fund: A 25 Year Framework

Describe how your program will advance the indicators identified in the plans selected:

The sites and actions included in this proposal will combat the threats of habitat fragmentation, degradation and invasive species, with a preference for habitat for listed and other rare species and high diversity sites. These were identified in Minnesota's Wildlife Action Plan and LSOHC: 25-year framework as the priority actions needed to address significant challenges facing SGCN and landscape resilience in the ASP region.

Which LSOHC section priorities are addressed in this proposal:

Forest / Prairie Transition:

- Protect, enhance, and restore wild rice wetlands, shallow lakes, wetland/grassland complexes, aspen parklands, and shoreland that provide critical habitat for game and nongame wildlife

Northern Forest:

- Restore and enhance habitat on existing protected properties, with preference to habitat for rare, endangered, or threatened species identified by the Minnesota County Biological Survey

Metro / Urban:

- Protect, enhance, and restore remnant native prairie, Big Woods forests, and oak savanna with an emphasis on areas with high biological diversity

Describe how your program will produce and demonstrate a significant and permanent conservation legacy and/or outcomes for fish, game, and wildlife as indicated in the LSOHC priorities:

The Anoka Sand Plain partnership has worked to protect and restore key areas to ensure that, along with growth, this region continues to be a resilient, functioning landscape that can provide high-quality habitat for fish, game and other wildlife. With past funds, our

partnership has protected 218 acres and restored/enhanced 10,849 acres in this unique ecological region, and has buffered high quality habitat cores and expanded habitat corridors. With this funding we will continue to increase the number of acres of enhanced, restored, and protected key habitats to reduce habitat fragmentation, degradation and invasive species which threaten SGCN, landscape resilience, and outdoor recreation opportunities.

Relationship to other funds:

- Environmental and Natural Resource Trust Fund

Describe the relationship of the funds:

Members of the ASP Partnership also use and pursue funds available through Environmental and Natural Resources Trust Fund to help achieve partnership goals in the Anoka Sand Plain watershed program boundary.

ACD's Rare Plant Rescue Program has also been submitted to LCCMR for ML2021 consideration.

GRG and TNC, as member/leader respectively of the Camp Ripley Sentinel Landscape partnership, are part of Crow Wing SWCD Camp Ripley Sentinel Landscape Forest Restoration and Enhancements LCCMR ML2021 proposal. GRG's Ripley Esker SNA project is included in that proposal as well as ASP7, as the activities fit the goals of both programs and funding sources. TNC's CRSL II proposal is for funding to accelerate prescribed burning in CRSL, which has conservation and some geographic overlap with ASP7 watershed program boundary; and Ripley Esker SNA has been identified as a priority parcel for prescribed burning should funding be received.

GRG's ML2020 Pollinator Central I (line item recommended and resubmitted) and ML2021 Pollinator Central II LCCMR proposals have conservation and some geographic overlap with the ASP7 proposal. PCI and II are focused on smaller, non-traditional pollinator intensive habitats and guided by a 'hopscotch' corridor model for pollinators, all with a systemic commitment to engaging volunteers and citizen scientists, and are complementary to ASP7 in those regards.

ACD's proposal for an MLCCS Update to LCCMR ML2021 includes updates to MLCCS data and advanced planning for targeting ecological protection, restoration and management activities in the 7-county metro area. While the proposal overlaps geographically with portions of ASP7, the activities are distinct, and although complementary, will not be blended.

All organizations and agencies are committed to reporting transparency in instances when the funding is blended or leverage received.

Does this program include leverage in funds:

Yes

USFWS Partners for Fish and Wildlife Program/Mississippi Headwaters initiative, \$5,000 cash and \$10,000 in-kind for wetland restoration

\$10,000 cash from Morrison County Parks for Belle Prairie II.

Minnesota Landscape Arboretum in-kind valued at \$11,000 for Rare Plant Rescue program.

Through its market-based RFP process, the Minnesota Land Trust expects private landowners to donate at least \$360,000 in easement value toward the program, which is shown as leverage.

Non-realized portion of DSS from all partner organizations, as in-kind.

Leverage from landowners and partner organizations underscores their shared interest and commitment. For example, the University of Minnesota Landscape Arboretum is a center for horticulture and plant research, and partner with the Center for Plant Conservation (CPC) to create a long-term genetically diverse seed bank of rare plant species as well as developing an understanding of how best to propagate and out-plant each species.

Per MS 97A.056, Subd. 24, Any state agency or organization requesting a direct appropriation from the OHF must inform the LSOHC at the time of the request for funding is made, whether the request is supplanting or is a substitution for any previous funding that was not from a legacy fund and was used for the same purpose:

This proposal to LSOHC for Outdoor Heritage Fund support does not supplant any other sources of funds. In all cases, this proposal and the projects to be completed accelerate regional habitat work in the Anoka Sand Plain.

Describe the source and amount of non-OHF money spent for this work in the past:

Appropriation Year	Source	Amount
various	State of Minnesota General Fund, Bonding, Trust Fund, etc for WMA and SNA purchase, restoration, enhancement, and management.	
2014	Morrison County - Belle Prairie Phase I match	24000
various	City of Blaine (Rare Plant Rescue recipient site) Tax Levy, Park Dedication Fees, Open Space Referendum, Blaine Wetland Sanctuary I and II match	9019000
2017	Trust Fund leverage for Blaine Wetland Sanctuary I and II match	25000

How will you sustain and/or maintain this work after the Outdoor Heritage Funds are expended:

The ASP Partnership is committed to working with respective land management agencies and owners, and conservation organizations in an on-going basis to identify and procure financial resources for maintaining these improvements as needed.

Land protected through MLT conservation easements will be sustained through state-of-the-art standards and practices for conservation easement stewardship that includes annual property monitoring, effective records management, addressing inquiries and interpretations, tracking changes in ownership, investigating potential violations and defending the easement in case of a true violation. Funding for these easement stewardship activities is included in the project budget.

For R/E on existing protected land, site specific resource management plans will be utilized (and developed, if not already in place) to guide effective long-term management of targeted habitats and species. All land managers associated with R/E and rare plant rescue sites must commit to the long-term maintenance of these habitat improvements in line with prescribed actions. A principle management goal for each site is to bring them to a threshold where on-going management costs are diminished, before the end of the grant period. For the sites and programs that use volunteers, community stakeholder engagement is increased providing an additional layer of stakeholder monitoring.

Explain the things you will do in the future to maintain project outcomes:

Year	Source of Funds	Step 1	Step 2	Step 3
2026	MLT Long Term Stewardship and Enforcement Funds	Annual Monitoring of Easements	Enforcement as Necessary	
2028	GRC in-kind	Monitoring every 2-3 years	Landowner Engagement	
2028	DNR in-kind	RxBurning	Spot herbicide treatment	
2028	Anoka Agriculture Preserves	Monitor every 2-3 years	Followup treatment	
2029	Anoka County Parks	Prescribed burn	Spot herbicide treatment	
2029	City of Blaine (Rare Plant Recipient Site)	Prescribed burn	Spot herbicide treatment	Spot herbicide treatments
2026	TNC, USFWS, SWCDs	Evaluate restoration based on initial restoration plan	Provide technical assistance to the landowner/operator as necessary	

Identify indicator species and associated quantities this habitat will typically support:

Mallard: The biological model used in the Upper Mississippi River and Great Lakes Region Joint Venture (UMRGLRV) to estimate habitat needs to support mallard population growth uses an accepted rate of 1 mallard pair per 2.47 acres of wetland habitat. At 650 acres, 263 pairs

Trumpeter Swan: Though reported territories can range in size from 1.5 - >100 hectares, a reasonable expectation is that 1 trumpeter swan pair would be supported by each 150 acres of wetlands protected, restored, or enhanced. At 650 acres, 4 pairs

Monarch Butterfly: Xerces and Monarch Joint Venture report research is indicating a wide range of milkweed stems needed to support one migrating monarch butterfly. Using the minimum of 30 milkweed needed to support one migrating monarch butterfly, and the conservative 100 stems/acre (of the 100-600 range), these prairie, savanna, and wetland fringe habitats will contribute 3.33 monarchs/acre to the population. At 620 acres, a total of 2066 adult monarchs.

Wild Turkey: Researcher Dr. Bret Collier, of Louisiana State University has suggested that habitat management such as the restoration activities proposed in the northern forest and forest/prairie transition regions may increase wild turkey use of the parcels by up to 20%. This number was generated based on restoration activities in Texas. Turkey nesting densities are relatively unknown but based on recent research, nesting density may be in the 1 hen/100-200 acres of restored habitat (B. A. Collier, Louisiana State University, unpublished). At 560 acres, 4 hens.

Activity Details

Requirements:

If funded, this proposal will meet all applicable criteria set forth in MS 97A.056 - **Yes**

Is the land you plan to acquire (easement) free of any other permanent protection - **Yes**

Will restoration and enhancement work follow best management practices including MS 84.973 Pollinator Habitat Program - **Yes**

Is the restoration and enhancement activity on permanently protected land per 97A.056, subd 13(f), tribal lands, and/or public waters per MS 103G.005, Subd. 15 - **Yes**

Do you anticipate federal funds as a match for this program - **Yes**

Are the funds confirmed - **Yes**

Documentation

What are the types of funds?

Cash Match - \$5000

In-Kind Match - \$10000

Land Use:

Will there be planting of corn or any crop on OHF land purchased or restored in this program - **Yes**

Explain

Easement Acquisition:

The purpose of the Minnesota Land Trust's conservation easements is to protect existing high quality natural habitat and to preserve opportunities for future restoration. As such, we restrict any agricultural lands and use on the properties. In cases in which there are agricultural lands associated with the larger property, we will either carve the agricultural area out of the conservation easement, or in some limited cases, we may include a small percentage of agricultural lands if it is not feasible to carve those areas out. In such cases, however, we will not use OHF funds to pay the landowners for that portion of the conservation easement.

Restoration:

Short-term use of agricultural crops is an accepted best practice for preparing a site for prairie restoration, in order to reduce weed seedbeds prior to prairie planting. In some cases this necessitates the use of GMO treated products to facilitate herbicide use in order to control weeds present in the seedbank.

Will the eased land be open for public use - **No**

Are there currently trails or roads on any of the acquisitions on the parcel list - **Yes**

Describe the types of trails or roads and the allowable uses:

Most conservation easements are established on private lands, many of which have driveways, field roads and trails located on them. Often, the conservation easement permits the continued usage of established trails and roads so long as their use does not significantly impact the conservation values of the property. Creation of new roads/trails or expansion of existing ones is typically not allowed.

Will the trails or roads remain and uses continue to be allowed after OHF acquisition - **Yes**

How will maintenance and monitoring be accomplished:

The land protected through conservation easements will be sustained through state-of-the-art standards and practices for conservation easement stewardship that includes annual property monitoring, effective records management, addressing inquiries and interpretations, tracking changes in ownership, investigating potential violations and defending the easement in case of a true violation. Funding for these easement stewardship activities is included in the project budget.

Will new trails or roads be developed or improved as a result of the OHF acquisition - **No**

Will the land that you acquire (fee or easement) be restored or enhanced within this proposals funding and availability? - **No**

Explain how, when, and source of the R/E work:

If the need for R/E on eased lands exists, MLT will budget to address this need in future proposals to LSOHC or through other sources.

Land Use:

Have you received OHF dollars in the past through LSOHC? - **Yes**

Past appropriations and spending to date:

Apprp Year	Approp Amount Received	Approp Amount Spent to Date	Leverage as Reported in AP/th>	Leverage Realized to Date	Total Acres Affected in AP	Total Acres Affected to Date	Program Complete and Final Report Approved?
2019	2573000	469800	269900	30000	1060	37	no
2017	1130000	646200	128500	101100	342	262	no
2016	1208000	785400	238700	245200	1286	908	no
2014	1190000	1047100	135200	126300	2947	3714	Yes
2012	1050000	989400	71500	208800	1385	1866	Yes
2010	747000	747000	0	127100	1919	4179	Yes

Accomplishment Timeline

Activity	Approximate Date Completed
ACD: R&E Project planning, prairie herbicide treatment	12/31/2021
ACD: Initial tree and shrub harvest/removal, reed canary grass treatment, prairie prescribed burn, native seeding; Rare plant rescue: Identify rare plant populations to rescue and transplant into ecologically suitable host sites.	12/31/2022
ACD: Woody invasive treatment, reed canary grass treatment, 3 ditch plugs and wetland scrape, seed wetland and prairie; Rare plant rescue: Identify rare plant populations to rescue and transplant into ecologically suitable host sites, develop and implement monitoring protocol	12/31/2023
ACD: Woody invasive treatment, reed canary grass treatment, establishment mow, prairie establishment mow and spot treatment, followup herbicide spot treatment, wetland seeding; Rare plant rescue: Identify rare plant populations to rescue and transplant into ecologically suitable host sites, monitor sites with transplants	12/31/2024
ACD: R&E monitoring and followup treatments; Rare plant rescue: Identify rare plant populations to rescue and transplant into ecologically suitable host sites, monitor sites with transplants, analyze rare plant rescue results	12/31/2025
ACD: Finalize and distribute MN DNR approved rare species specific rescue and conservation plans for 6 - 10 rare species; Final Report	12/31/2026
ACD: R&E followup treatments, prepare host sites and transplant harvested rare plants	6/30/2025
ACD: Final Report (including documentation on rare plant rescue project)	6/30/2026
GRC: Project planning, secure landowner agreements	12/31/2021
GRC: Site prep, initial brushing, seeding, initial wave of buckthorn control	6/30/2022
GRC: Site prep, second wild rice seeding	11/1/2023
GRC: Followup brushing followup buckthorn control; old field seeding, planting	6/30/2024
GRC: Third wild rice seeding	11/1/2025
GRC: Followup brushing, prairie establishment, supplemental forb planting, prescribed burns	6/30/2025
GRC: Savanna establishment, Monitoring, followup treatments	6/30/2026
MLT: Protection of 540 acres of land through conservation easement	6/30/2025
NWTF: Project planning and coordination with landowner	12/31/2021
NWTF: Fuels mitigation, long-term firebreak construction, prescribed fire	6/30/2022
NWTF: Brushland enhancement with forestry mower	6/30/2023
NWTF: Fuels mitigation, firebreak maintenance, prescribed fire	6/30/2025
NWTF: Final Report	6/30/2026
TNC: Identify potential sites	6/30/2023
TNC: Landowner Outreach - SWCD Contract	6/30/2024
TNC: Prioritize and select projects and complete designs	6/30/2025
TNC: Complete wetland restorations and enhancements	6/30/2026

Budget Spreadsheet

Total Amount of Request: \$5,838,200

Budget and Cash Leverage

BudgetName	LSOHC Request	Anticipated Leverage	Leverage Source	Total
Personnel	\$875,300	\$5,000	Morrison County	\$880,300
Contracts	\$2,100,100	\$34,300	UMLA, CCES, USFWS/ACD,USFWS	\$2,134,400
Fee Acquisition w/ PILT	\$0	\$0		\$0
Fee Acquisition w/o PILT	\$0	\$0		\$0
Easement Acquisition	\$1,800,000	\$360,000	MLT: Landowner donation of easement value	\$2,160,000
Easement Stewardship	\$288,000	\$0		\$288,000
Travel	\$24,000	\$0		\$24,000
Professional Services	\$328,000	\$0		\$328,000
Direct Support Services	\$251,900	\$208,000	NWTF,ACD,GRG	\$459,900
DNR Land Acquisition Costs	\$0	\$0		\$0
Capital Equipment	\$0	\$0		\$0
Other Equipment/Tools	\$2,000	\$0		\$2,000
Supplies/Materials	\$168,900	\$11,000	USFWS/ACD,Morrison County,USFWS	\$179,900
DNR IDP	\$0	\$0		\$0
Total	\$5,838,200	\$618,300		\$6,456,500

Personnel

Position	FTE	Over # of years	LSOHC Request	Anticipated Leverage	Leverage Source	Total
NWTF Staff	0.05	5.00	\$29,100	\$0		\$29,100
ACD Personnel	1.37	5.00	\$426,000	\$0		\$426,000
MLT Staff	0.60	4.00	\$240,000	\$0		\$240,000
GRG Staff	0.27	5.00	\$114,200	\$5,000	Morrison County	\$119,200
TNC Staff	0.15	5.00	\$66,000	\$0		\$66,000
Total	2.44	24.00	\$875,300	\$5,000		\$880,300

Budget and Cash Leverage by Partnership

BudgetName	Partnership	LSOHC Request	Anticipated Leverage	Leverage Source	Total
Personnel	National Wild Turkey Federation	\$29,100	\$0		\$29,100
Contracts	National Wild Turkey Federation	\$236,400	\$0		\$236,400
Fee Acquisition w/ PILT	National Wild Turkey Federation	\$0	\$0		\$0
Fee Acquisition w/o PILT	National Wild Turkey Federation	\$0	\$0		\$0
Easement Acquisition	National Wild Turkey Federation	\$0	\$0		\$0
Easement Stewardship	National Wild Turkey Federation	\$0	\$0		\$0
Travel	National Wild Turkey Federation	\$3,000	\$0		\$3,000
Professional Services	National Wild Turkey Federation	\$0	\$0		\$0
Direct Support Services	National Wild Turkey Federation	\$20,300	\$25,400	NWTF	\$45,700
DNR Land Acquisition Costs	National Wild Turkey Federation	\$0	\$0		\$0
Capital Equipment	National Wild Turkey Federation	\$0	\$0		\$0
Other Equipment/Tools	National Wild Turkey Federation	\$0	\$0		\$0
Supplies/Materials	National Wild Turkey Federation	\$0	\$0		\$0
DNR IDP	National Wild Turkey Federation	\$0	\$0		\$0
Total		\$288,800	\$25,400		\$314,200

Personnel - National Wild Turkey Federation

Position	FTE	Over # of years	LSOHC Request	Anticipated Leverage	Leverage Source	Total
NWTF Staff	0.05	5.00	\$29,100	\$0		\$29,100
Total	0.05	5.00	\$29,100	\$0		\$29,100

BudgetName	Partnership	LSOHC Request	Anticipated Leverage	Leverage Source	Total
Personnel	Anoka Conservation District	\$426,000	\$0		\$426,000
Contracts	Anoka Conservation District	\$362,400	\$24,300	UMLA, CCES, USFWS/ACD	\$386,700

Fee Acquisition w/ PILT	Anoka Conservation District	\$0	\$0		\$0
Fee Acquisition w/o PILT	Anoka Conservation District	\$0	\$0		\$0
Easement Acquisition	Anoka Conservation District	\$0	\$0		\$0
Easement Stewardship	Anoka Conservation District	\$0	\$0		\$0
Travel	Anoka Conservation District	\$0	\$0		\$0
Professional Services	Anoka Conservation District	\$0	\$0		\$0
Direct Support Services	Anoka Conservation District	\$42,600	\$86,000	ACD	\$128,600
DNR Land Acquisition Costs	Anoka Conservation District	\$0	\$0		\$0
Capital Equipment	Anoka Conservation District	\$0	\$0		\$0
Other Equipment/Tools	Anoka Conservation District	\$0	\$0		\$0
Supplies/Materials	Anoka Conservation District	\$95,000	\$1,000	USFWS/ACD	\$96,000
DNR IDP	Anoka Conservation District	\$0	\$0		\$0
Total		\$926,000	\$111,300		\$1,037,300

Personnel - Anoka Conservation District

Position	FTE	Over # of years	LSOHC Request	Anticipated Leverage	Leverage Source	Total
ACD Personnel	1.37	5.00	\$426,000	\$0		\$426,000
Total	1.37	5.00	\$426,000	\$0		\$426,000

Budget Name	Partnership	LSOHC Request	Anticipated Leverage	Leverage Source	Total
Personnel	Minnesota Land Trust	\$240,000	\$0		\$240,000
Contracts	Minnesota Land Trust	\$147,000	\$0		\$147,000
Fee Acquisition w/ PILT	Minnesota Land Trust	\$0	\$0		\$0
Fee Acquisition w/o PILT	Minnesota Land Trust	\$0	\$0		\$0
Easement Acquisition	Minnesota Land Trust	\$1,800,000	\$360,000	MLT: Landowner donation of easement value	\$2,160,000
Easement Stewardship	Minnesota Land Trust	\$288,000	\$0		\$288,000
Travel	Minnesota Land Trust	\$10,000	\$0		\$10,000
Professional Services	Minnesota Land Trust	\$305,000	\$0		\$305,000
Direct Support Services	Minnesota Land Trust	\$65,000	\$0		\$65,000
DNR Land Acquisition Costs	Minnesota Land Trust	\$0	\$0		\$0
Capital Equipment	Minnesota Land Trust	\$0	\$0		\$0
Other Equipment/Tools	Minnesota Land Trust	\$0	\$0		\$0
Supplies/Materials	Minnesota Land Trust	\$3,000	\$0		\$3,000
DNR IDP	Minnesota Land Trust	\$0	\$0		\$0
Total		\$2,858,000	\$360,000		\$3,218,000

Personnel - Minnesota Land Trust

Position	FTE	Over # of years	LSOHC Request	Anticipated Leverage	Leverage Source	Total
MLT Staff	0.60	4.00	\$240,000	\$0		\$240,000
Total	0.60	4.00	\$240,000	\$0		\$240,000

Budget Name	Partnership	LSOHC Request	Anticipated Leverage	Leverage Source	Total
Personnel	Great River Greening	\$114,200	\$5,000	Morrison County	\$119,200
Contracts	Great River Greening	\$988,800	\$0		\$988,800
Fee Acquisition w/ PILT	Great River Greening	\$0	\$0		\$0
Fee Acquisition w/o PILT	Great River Greening	\$0	\$0		\$0
Easement Acquisition	Great River Greening	\$0	\$0		\$0
Easement Stewardship	Great River Greening	\$0	\$0		\$0
Travel	Great River Greening	\$6,000	\$0		\$6,000
Professional Services	Great River Greening	\$0	\$0		\$0
Direct Support Services	Great River Greening	\$89,000	\$96,600	GRG	\$185,600
DNR Land Acquisition Costs	Great River Greening	\$0	\$0		\$0
Capital Equipment	Great River Greening	\$0	\$0		\$0
Other Equipment/Tools	Great River Greening	\$1,500	\$0		\$1,500
Supplies/Materials	Great River Greening	\$65,900	\$5,000	Morrison County	\$70,900
DNR IDP	Great River Greening	\$0	\$0		\$0
Total		\$1,265,400	\$106,600		\$1,372,000

Personnel - Great River Greening

Position	FTE	Over # of years	LSOHC Request	Anticipated Leverage	Leverage Source	Total
GRG Staff	0.27	5.00	\$114,200	\$5,000	Morrison County	\$119,200
Total	0.27	5.00	\$114,200	\$5,000	-	\$119,200

BudgetName	Partnership	LSOHC Request	Anticipated Leverage	Leverage Source	Total
Personnel	The Nature Conservancy	\$66,000	\$0		\$66,000
Contracts	The Nature Conservancy	\$365,500	\$10,000	USFWS	\$375,500
Fee Acquisition w/ PILT	The Nature Conservancy	\$0	\$0		\$0
Fee Acquisition w/o PILT	The Nature Conservancy	\$0	\$0		\$0
Easement Acquisition	The Nature Conservancy	\$0	\$0		\$0
Easement Stewardship	The Nature Conservancy	\$0	\$0		\$0
Travel	The Nature Conservancy	\$5,000	\$0		\$5,000
Professional Services	The Nature Conservancy	\$23,000	\$0		\$23,000
Direct Support Services	The Nature Conservancy	\$35,000	\$0		\$35,000
DNR Land Acquisition Costs	The Nature Conservancy	\$0	\$0		\$0
Capital Equipment	The Nature Conservancy	\$0	\$0		\$0
Other Equipment/Tools	The Nature Conservancy	\$500	\$0		\$500
Supplies/Materials	The Nature Conservancy	\$5,000	\$5,000	USFWS	\$10,000
DNR IDP	The Nature Conservancy	\$0	\$0		\$0
Total	-	\$500,000	\$15,000	-	\$515,000

Personnel - The Nature Conservancy

Position	FTE	Over # of years	LSOHC Request	Anticipated Leverage	Leverage Source	Total
TNC Staff	0.15	5.00	\$66,000	\$0		\$66,000
Total	0.15	5.00	\$66,000	\$0	-	\$66,000

Amount of Request: \$5,838,200

Amount of Leverage: \$618,300

Leverage as a percent of the Request: 10.59%

DSS + Personnel: \$1,127,200

As a % of the total request: 19.31%

Easement Stewardship: \$288,000

As a % of the Easement Acquisition: 16.00%

How did you determine which portions of the Direct Support Services of your shared support services is direct to this program:

ACD: ACD is requesting 10% DSS and listing the remaining 20.25% as match. ACD calculated their rate following USDA guidelines and has submitted their methodology to DNR for review. DNR has no objections to their rate in their preliminary analysis.

GRG: In a process approved by DNR in September 2019, GRG's direct support services rate includes all allowable direct and necessary expenditures not captured in other line items in the budget. Our DSS request to LSOHC is less than half the amount allowed by the DNR approved rate, and less than or equal to 10% of the total allocation request.

MLT: In a process approved by DNR on March 17, 2017, Minnesota Land Trust determined our direct support services rate to include all of the allowable direct and necessary expenditures that are not captured in other line items in the budget, which is similar to the Land Trust's proposed federal indirect rate. We will apply this DNR-approved rate only to personnel expenses to determine the total amount of direct support services.

The NWTF has a federally approved indirect rate of 16.98%; adjusted down to 10% of the direct funds received.

TNC: DSS is based on The Nature Conservancy's Federal Negotiated Rate (FNR) as proposed and approved by the US Dept. of Interior on an annual basis. In this proposal we are requesting reimbursement of 7.5% of eligible base costs as determined by our annual FNR and based on suggestions from the Council in prior years' hearings. The amount requested for reimbursement represents less than one-third of the total reimbursable costs allowed under the FNR. Examples of expenses included in the FNR include services from in-house

legal counsel; finance, human resources; and information technology support, all of which contribute directly to the implementation of the project.

What is included in the contracts line?

The bulk of R/E contracts are for CCM and/or for-profit firms to implement field activities. Other R/E contracts include SWCD outreach contracts for wetland program, and 15K for rare plant monitoring.

For easement protection, contract amounts are for the writing of habitat management plans and

Does the amount in the travel line include equipment/vehicle rental? - No

Explain the amount in the travel line outside of traditional travel costs of mileage, food, and lodging:

No travel budget is allocated for non-traditional costs.

I understand and agree that lodging, meals, and mileage must comply with the current MMB Commissioner Plan: - Yes

Describe and explain leverage source and confirmation of funds:

Morrison County has approved their cash match in writing; USFWS has confirmed in writing their contribution. See attachments

The MLT landowner leverage amount is a conservative estimate of value we expect to see donated by landowners.

For in-kind, each recipient calculated the unrealized DSS amount.

Does this proposal have the ability to be scalable? - Yes

Tell us how this project would be scaled and how administrative costs are affected, describe the "economy of scale" and how outputs would change with reduced funding, if applicable:

Reduced funding will result in fewer projects and/or smaller 'phased' project(s). While opportunities to retain efficiencies will be captured, some economy of scale will be lost as writing plans, outreach, and rfps are somewhat fixed costs and do not necessarily scale linearly to size of project.

What is the cost per easement for stewardship and explain how that amount is calculated?

The average cost per easement to fund the Minnesota Land Trust's perpetual monitoring and enforcement obligations is \$24,000. This figure is derived from MLT's detailed stewardship funding "cost analysis" which is consistent with Land Trust Accreditation standards. MLT shares periodic updates to this cost analysis with LSOHC staff.

Has funding for these positions been requested in the past? - Yes

Please explain the overlap of past and future staffing and position levels previously received and how that is coordinated over multiple years?

ACD tracks personnel/ staff time with an hours log, where we record our time for each unique project and then uses pivot tables to sum staff hours each Quarter x their rate.

GRG: Each allocation is operationalized, budgeted, and tracked independently. Projects under each allocation are unique, and only actual personnel time is charged to these unique projects and allocations.

MLT: FTEs listed in the proposal are a coarse estimate of the personnel time required to produce the grant deliverables put forward in this proposal. An array of staff draw from these funds for legal work, negotiating with landowners, crafting of conservation easements, writing baseline reports and managing the grant. We use only those personnel funds necessary to achieve the goals of the grant.

NWTF tracks personnel time specific to an allocation via an internal Mission Management System. Projects are differentiated with unique project numbers and separately tracked.

This is TNC's first time as a direct recipient in the Anoka Sand Plain partnership proposal; there is no overlap of staffing with previous allocations.

Output Tables

Table 1a. Acres by Resource Type

Type	Wetlands	Prairies	Forest	Habitats	Total
Restore	75	0	0	0	75
Protect in Fee with State PILT Liability	0	0	0	0	0
Protect in Fee W/O State PILT Liability	0	0	0	0	0
Protect in Easement	0	0	0	540	540
Enhance	557	214	409	2	1,182
Total	632	214	409	542	1,797

Table 1b. How many of these Prairie acres are Native Prairie?

Type	Native Prairie
Restore	0
Protect in Fee with State PILT Liability	0
Protect in Fee W/O State PILT Liability	0
Protect in Easement	0
Enhance	0
Total	0

Table 2. Total Requested Funding by Resource Type

Type	Wetlands	Prairies	Forest	Habitats	Total
Restore	\$250,000	\$0	\$0	\$0	\$250,000
Protect in Fee with State PILT Liability	\$0	\$0	\$0	\$0	\$0
Protect in Fee W/O State PILT Liability	\$0	\$0	\$0	\$0	\$0
Protect in Easement	\$0	\$0	\$0	\$2,858,000	\$2,858,000
Enhance	\$863,900	\$495,600	\$970,700	\$400,000	\$2,730,200
Total	\$1,113,900	\$495,600	\$970,700	\$3,258,000	\$5,838,200

Table 3. Acres within each Ecological Section

Type	Metro/Urban	Forest/Prairie	SE Forest	Prairie	Northern Forest	Total
Restore	50	15	0	0	10	75
Protect in Fee with State PILT Liability	0	0	0	0	0	0
Protect in Fee W/O State PILT Liability	0	0	0	0	0	0
Protect in Easement	270	270	0	0	0	540
Enhance	495	209	0	0	478	1,182
Total	815	494	0	0	488	1,797

Table 4. Total Requested Funding within each Ecological Section

Type	Metro/Urban	Forest/Prairie	SE Forest	Prairie	Northern Forest	Total
Restore	\$167,000	\$50,000	\$0	\$0	\$33,000	\$250,000
Protect in Fee with State PILT Liability	\$0	\$0	\$0	\$0	\$0	\$0
Protect in Fee W/O State PILT Liability	\$0	\$0	\$0	\$0	\$0	\$0
Protect in Easement	\$1,429,000	\$1,429,000	\$0	\$0	\$0	\$2,858,000
Enhance	\$1,497,000	\$465,200	\$0	\$0	\$768,000	\$2,730,200
Total	\$3,093,000	\$1,944,200	\$0	\$0	\$801,000	\$5,838,200

Table 5. Average Cost per Acre by Resource Type

Type	Wetlands	Prairies	Forest	Habitats
Restore	\$3,333	\$0	\$0	\$0
Protect in Fee with State PILT Liability	\$0	\$0	\$0	\$0
Protect in Fee W/O State PILT Liability	\$0	\$0	\$0	\$0
Protect in Easement	\$0	\$0	\$0	\$5,293
Enhance	\$1,551	\$2,316	\$2,373	\$200,000

Table 6. Average Cost per Acre by Ecological Section

Type	Metro/Urban	Forest/Prairie	SE Forest	Prairie	Northern Forest
Restore	\$3,340	\$3,333	\$0	\$0	\$3,300
Protect in Fee with State PILT Liability	\$0	\$0	\$0	\$0	\$0
Protect in Fee W/O State PILT Liability	\$0	\$0	\$0	\$0	\$0
Protect in Easement	\$5,293	\$5,293	\$0	\$0	\$0
Enhance	\$3,024	\$2,226	\$0	\$0	\$1,607

Automatic system calculation / not entered by managers

Target Lake/Stream/River Feet or Miles

0

I have read and understand Section 15 of the Constitution of the State of Minnesota, Minnesota Statute 97A.056, and the Call for Funding Request. I certify I am authorized to submit this proposal and to the best of my knowledge the information provided is true and accurate.

Outcomes

Programs in the northern forest region:

- Healthy populations of endangered, threatened, and special concern species as well as more common species *Perform ecological monitoring using DNR protocol and evaluate data; adapt management when and where needed. Record number of acres protected of high quality habitat on private lands, which buffer public lands and expand habitat cores and corridors; and number of acres of key habitat successfully restored / enhanced. Map project sites and periodically perform GIS analysis to help quantify impact on habitat complexes.*

Programs in forest-prairie transition region:

- Protected, restored, and enhanced nesting and migratory habitat for waterfowl, upland birds, and species of greatest conservation need *Perform ecological monitoring using DNR protocol and evaluate data; adapt management when and where needed. Record number of acres protected of high quality habitat on private lands, which buffer public lands and expand habitat cores and corridors; and number of acres of key habitat successfully restored / enhanced. Map project sites and periodically perform GIS analysis to help quantify impact on habitat complexes.*

Programs in metropolitan urbanizing region:

- Core areas protected with highly biologically diverse wetlands and plant communities, including native prairie, Big Woods, and oak savanna *Perform ecological monitoring using DNR protocol and evaluate data; adapt management when and where needed. Record number of acres protected of high quality habitat on private lands, which buffer public lands and expand habitat cores and corridors; and number of acres of key habitat successfully restored / enhanced. Map project sites and periodically perform GIS analysis to help quantify impact on habitat cores and corridors.*

Parcel List

Explain the process used to select, rank and prioritize the parcels:

The ASP Partnership 10 - Year Strategic Conservation Action Plan utilizes multiple-criteria GIS analyses to identify and prioritize critical areas for habitat connectivity, SGCN, biodiversity, and native plant communities. For the ASP partnership's strategic plan, multiple-criteria decision analyses in GIS were performed to identify and prioritize critical areas for habitat using data sources layers that capture habitat connectivity, habitats that support species in greatest conservation need, terrestrial and aquatic sites of biodiversity, potential locations of groundwater influenced shallow wetlands, and native plant communities.

Partners used their local expertise, knowledge, and landowner contacts to identify parcels and scope out the activities. DNR parcels were submitted to DNR for review. At multiples points in the process, the direct recipients reviewed the parcel list collectively and culled parcels that did not rank highly on the Strategic Plan criteria.

Note that in addition the parcels below, we have 3 programs included in this proposal: Rare Plant Rescue led by ACD, MLT Easements, and Wetland Restoration led by TNC. The criteria for parcel selection under these programs are included as attachments. At multiples points in the process, the direct recipients reviewed the program criteria collectively.

Section 1 - Restore / Enhance Parcel List

Anoka

Name	TRDS	Acres	Est Cost	Existing Protection?
Carl E. Bonnell WMA (ACD)	0 3425227	28	\$84,000	Yes
Carlos Avery WMA (GRG)	0 3421214	38	\$89,800	Yes
Cedar Creek Conservation Area (ACD)	0 3324232	6	\$27,000	Yes
Cedar Creek Eco system Science Reserve Phase 2 (ACD)	0 3423227	97	\$304,500	Yes
Lamprey Pass WMA Phase 1 (ACD)	0 3222213	45	\$110,500	Yes

Benton

Name	TRDS	Acres	Est Cost	Existing Protection?
Michaelson Farm WMA (NWTF)	0 3731205	58	\$62,800	Yes

Chisago

Name	TRDS	Acres	Est Cost	Existing Protection?
Wild Rose WMA (GRG)	0 3621209	150	\$316,600	Yes

Isanti

Name	TRDS	Acres	Est Cost	Existing Protection?
Marget Lake WMA (GRG)	0 3424203	100	\$220,200	Yes

Morrison

Name	TRDS	Acres	Est Cost	Existing Protection?
Belle Prairie County Park Phase 2 (GRG)	0 4132214	43	\$148,300	Yes
Rice Area Sportsmans Club WMA (NWTF)	0 3931213	108	\$103,100	Yes
Rice -Skunk WMA (NWTF)	0 4031219	112	\$122,900	Yes
Ripley Esker SNA (GRG)	0 4231218	40	\$129,600	Yes
Wild Rice III (GRG)	12931201	150	\$166,900	Yes

Sherburne

Name	TRDS	Acres	Est Cost	Existing Protection?
Sand Prairie WMEAA (GRG)	0 3530208	130	\$194,000	Yes

Section 2 - Protect Parcel List

No parcels with an activity type protect.

Section 2a - Protect Parcel with Bldgs

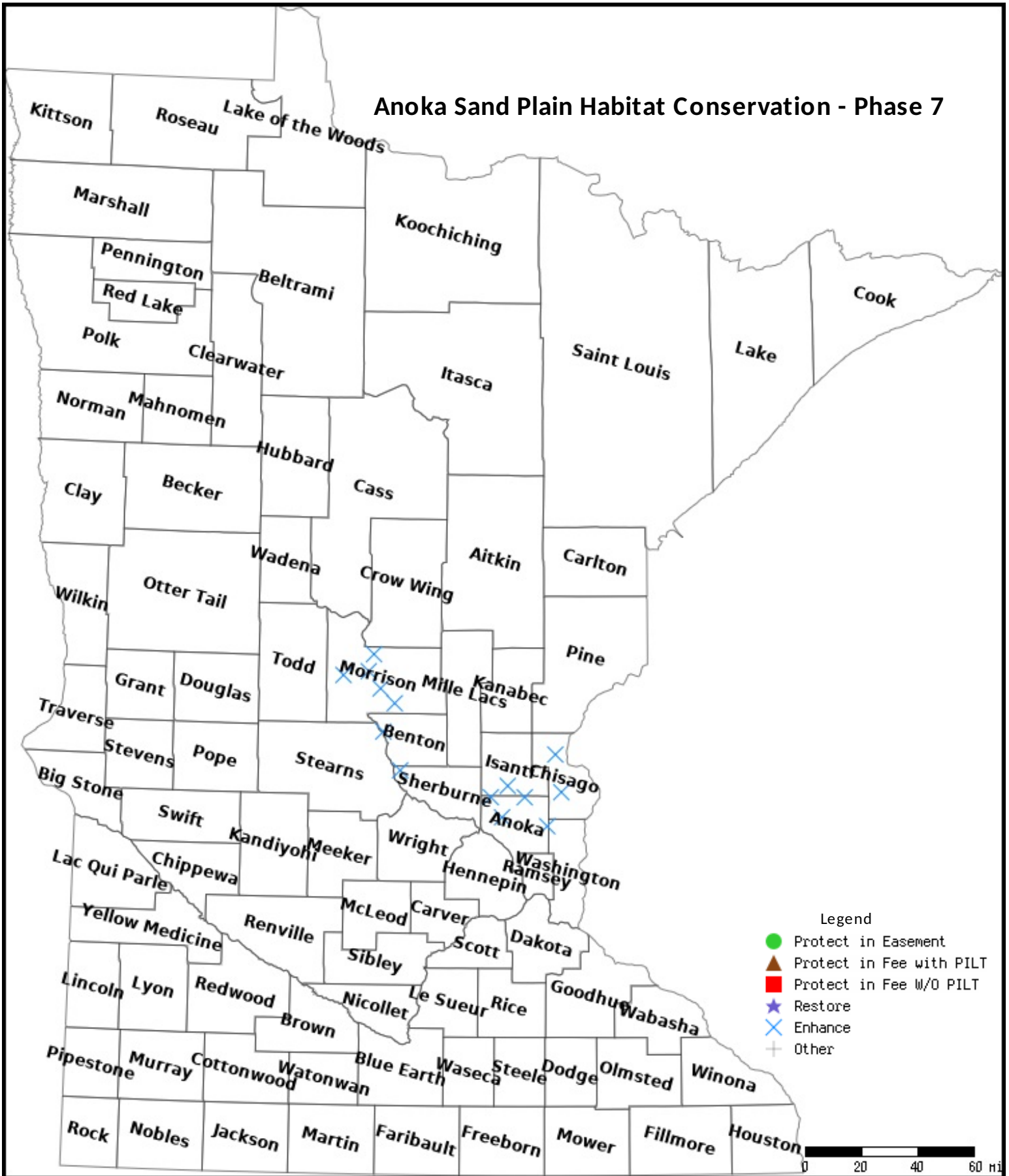
No parcels with an activity type protect and has buildings.

Section 3 - Other Parcel Activity

No parcels with an other activity type.

Parcel Map

Anoka Sand Plain Habitat Conservation - Phase 7



Data Generated From Parcel List

Anoka Sand Plain Habitat Conservation - Phase 7

Protect 540 acres of high quality private lands in conservation easements.

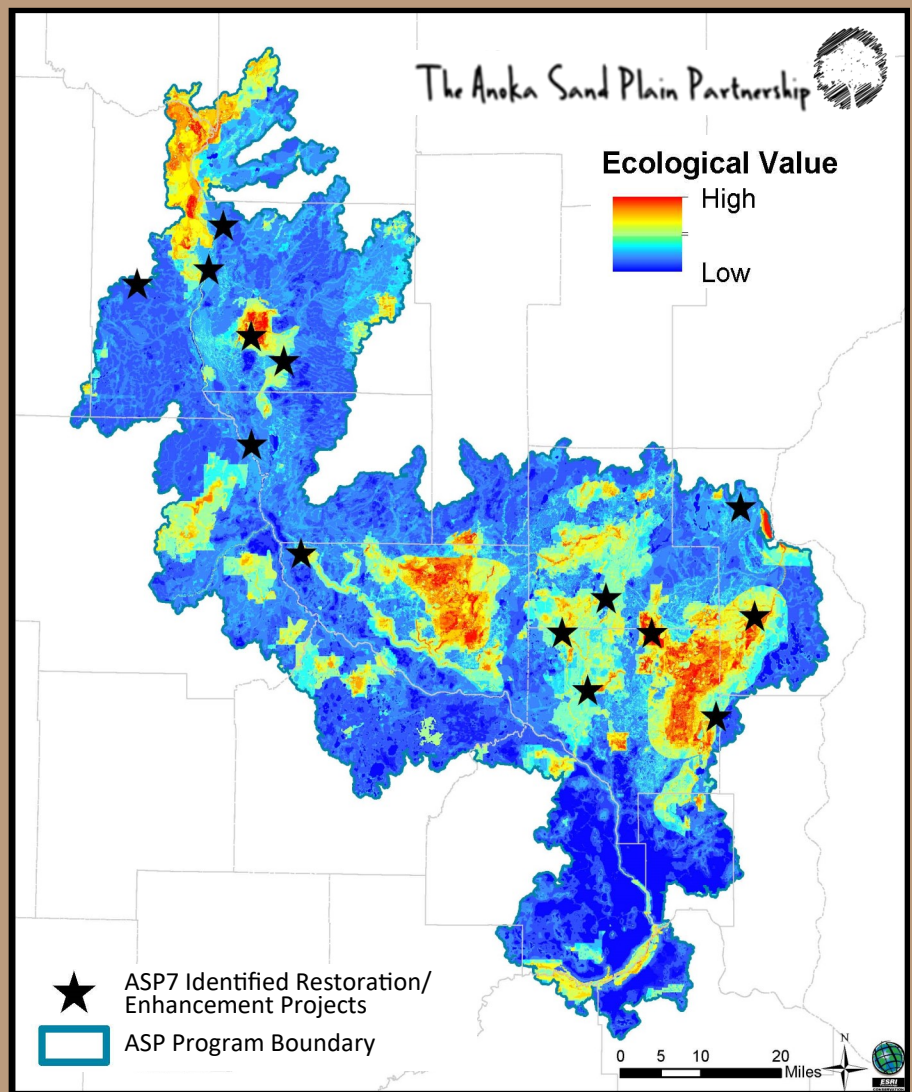
Restore/Enhance 1,107 acres of upland prairie, oak savanna, wetlands, and fire-dependent woodlands. Sites on map below.

Restore/Enhance additional 150 acres of priority wetlands on protected sites.

Launch Rare Plant Rescue Program to transplant up to 100,000 rare plants permitted for destruction to protected sites.

Priorities based on:

- DNR's Wildlife Action Network
- ASP Partnership Strategic Plan
- MBS Biodiversity Significance
- Habitat Connectivity
- Native Plant Communities
- Species in Greatest Conservation Need
- Threatened/Endangered/Special Concern Species



Anoka Sand Plain Partnership Accomplishments Phases 1 - 6

Acres Protected

Proposed: 290

Completed: 218

**Additional 150 acres
in progress**

Acres Restored/Enhanced

Proposed: 8,921

Completed: 10,849

**Additional 1,112 acres
in progress**

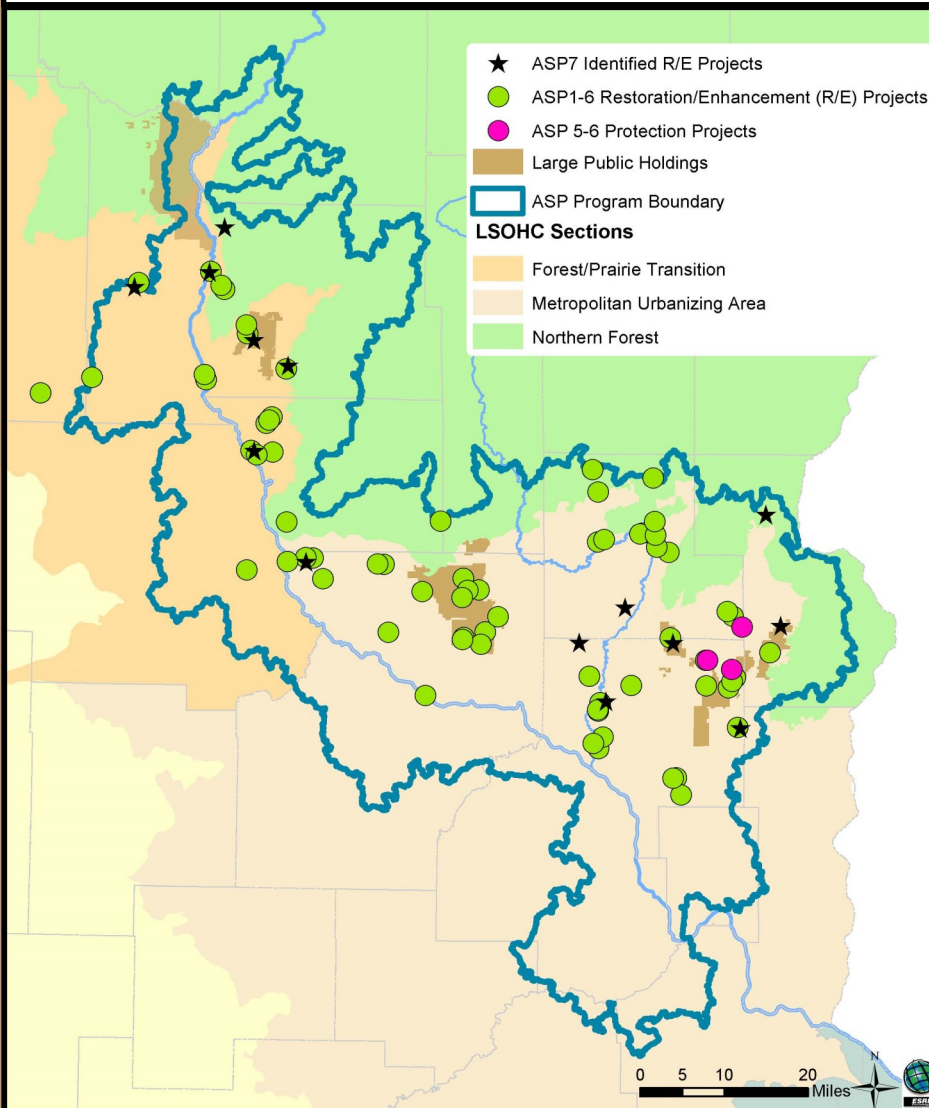


The Anoka Sand Plain Partnership

VISION

Protection, restoration and enhancement to increase biological diversity, habitat connectivity and landscape resilience in the Anoka Sand Plain.

ASP Phases 1-6 Projects and ASP 7 Proposal



OPPORTUNITY

Over 72,000 acres in the ASP Ecoregion are ranked Outstanding or High Biodiversity by the Minnesota County Biological Survey.

The ASP provides habitat for 97 Species in Greatest Conservation Need.

131 MN Endangered, Threatened, Special Concern species in the ASP.

URGENCY

State-wide projected growth through 2045 is estimated at 7% while growth in Anoka and Sherburne counties is 14% and 24% respectively.

Developing a Rare Plant Rescue Program for Minnesota

- Launching a new conservation and rescue program for rare plants throughout the Anoka Sand Plain Ecoregion of east-central Minnesota (1.1 million acres)
- Conducting outreach and sharing program materials to expand the program's impact

Photos from 2019 rescue pilot project.



Identify 5-10 recipient sites using habitat assessments and modeling



Rescue up to 100,000 individual rare plants and/or seed and relocate to suitable recipient sites



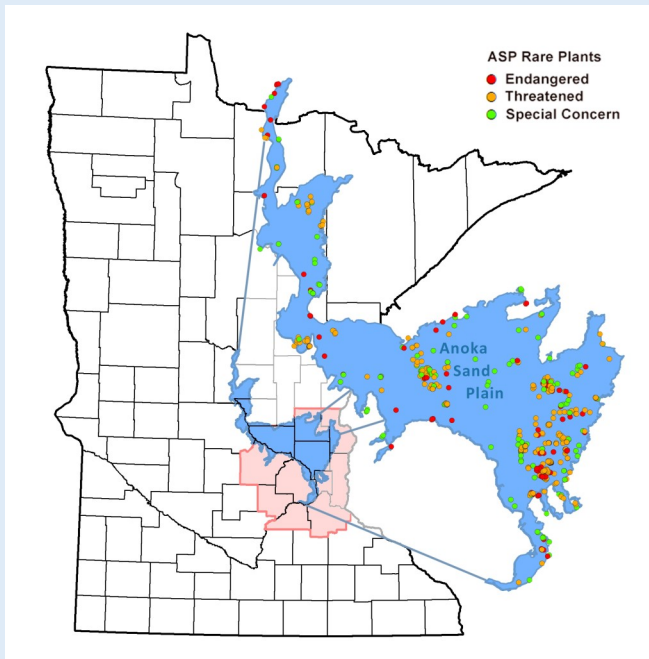
Seed bank, propagate, and grow at the Minnesota Landscape Arboretum



Develop and implement monitoring program to evaluate relocation efforts

60 species of rare plants in the ASP

While the Anoka Sand Plain comprises only 2.2% of the lands in Minnesota, this region supports 18% of all Threatened and Endangered plants species in the state.



The Anoka Sand Plain Partnership



13880 Business Center Drive NW | Ste. 100 | Elk River, MN 55330 | 763-765-3308

May 20, 2020

Lessard-Sams Outdoor Heritage Council Members
Room 95 State Office Building
100 Rev. Dr. Martin Luther King Jr. Blvd.
St. Paul, MN 55155

RE: Letter of Support – Anoka Sand Plain Rare Plant Recovery Program

This letter is to express support for the Anoka Sandplain Partnership’s ML2021 habitat enhancement project entitled, “Anoka Sand Plain Habitat Conservation – Phase 7” by Great River Greening as the lead organization, with Anoka Conservation District, Minnesota Land Trust, National Wild Turkey Federation and The Nature Conservancy as direct recipients.

As an integral member of the Anoka Sand Plain Partnership, we have seen firsthand the accomplishments of the first six phases of this project, which have exceeded acreage goals and resulted in thousands of acres of enhanced and protected habitat.

Phase 7 expands upon prior accomplishments with proven and innovative initiatives on appropriate project sites with a robust and coordinated group of direct recipients. This phase will continue to address the threats to, and opportunities in, the unique and important Anoka Sand Plain ecoregion watershed.

Sherburne County Parks has been actively applying adaptive management on 130 acres of remaining oak savanna – mapped as having moderate to high biodiversity by the MN DNR Biological Survey. As such, we could offer suitable host sites and management for plants recovered through the Anoka Sand Plain Rare Plant Recovery Program, included in “Anoka Sand Plain Habitat Conservation – Phase 7”.

Sincere regards,

A handwritten signature in black ink, appearing to read "Gina Hugo".

Gina Hugo, Parks Coordinator



ERAN SANDQUIST
State Coordinator - MN
410 Lincoln Ave South (Box 91)
South Haven, MN 55382

Cell: (763) 242-1273
Office: (320) 236-7755
Email: esandquist@pheasantsforever.org

TO: Lessard-Sams Outdoor Heritage Council Members:

Pheasants Forever would like to express support for the Anoka Sandplain Partnership's ML2021 habitat enhancement project entitled, "**Anoka Sand Plain Habitat Conservation – Phase 7**" by Great River Greening as the lead organization, with Anoka Conservation District, Minnesota Land Trust, National Wild Turkey Federation and The Nature Conservancy as direct recipients.

The first six phases of this project have exceeded acreage goals and resulted in thousands of acres of enhanced and protected habitat.

Phase 7 expands upon prior accomplishments with proven and innovative initiatives on appropriate project sites with a robust and coordinated group of direct recipients. This phase will continue to address the threats to, and opportunities in, the unique and important Anoka Sand Plain ecoregion watershed.

We urge the Council to give this project due consideration, and to ultimately recommend that the Minnesota Legislature provide an Outdoor Heritage Fund appropriation to this proven, successful program.

Sincerely,

Eran Sandquist
State Coordinator, Pheasants Forever Inc.



Stearns County Soil & Water Conservation District

Stearns County SWCD
110 2nd Street South – Suite 128
Waite Park, MN 56387

Tel. (320)251-7800 ext. 3
Fax. (320)251-9171
Web. www.stearnscountyswcd.net

May 26, 2020

TO: Lessard-Sams Outdoor Heritage Council Members:

The Stearns County Soil and Water Conservation District would like to express support for the Anoka Sandplain Partnership's ML2021 habitat enhancement project entitled, "**Anoka Sand Plain Habitat Conservation – Phase 7**" by Great River Greening as the lead organization, with Anoka Conservation District, Minnesota Land Trust, National Wild Turkey Federation and The Nature Conservancy as direct recipients.

As an integral member of the Anoka Sand Plain Partnership, we have seen firsthand the accomplishments of the first six phases of this project, which have exceeded acreage goals and resulted in thousands of acres of enhanced and protected habitat.

Phase 7 expands upon prior accomplishments with proven and innovative initiatives on appropriate project sites with a robust and coordinated group of direct recipients. This phase will continue to address the threats to, and opportunities in, the unique and important Anoka Sand Plain ecoregion watershed.

We urge the Council to give this project due consideration, and to ultimately recommend that the Minnesota Legislature provide an Outdoor Heritage Fund appropriation to this proven, successful program.

Sincerely,

Dennis J. Fuchs
Administrator

From: [Chuck Parins](#)
To: [Wiley Buck](#)
Subject: FW: Request for Partnerships GSC_ASP v3_19_20 (002).pdf
Date: Thursday, April 09, 2020 3:54:09 PM
Attachments: [Request for Partnerships GSC_ASP v3_19_20 \(002\).pdf](#)

Good Afternoon Wiley!

MC is on for \$10,000. I'll update tomorrow and send to you? Thanks!

Chuck Parins
Morrison County Public Works
Office: 320-631-2862
Cell: 320-232-9554

From: Chuck Parins
Sent: Friday, April 3, 2020 11:23 AM
To: Wiley Buck <wbuck@greatrivergreening.org>
Subject: Request for Partnerships GSC_ASP v3_19_20 (002).pdf

Good Morning again!

Draft request for your review. Waiting on the Director's approval.

Thanks!

From: [Riens, John](#)
To: [Wiley Buck](#)
Subject: Cash and In-Kind Support for ASP 7
Date: Wednesday, May 20, 2020 7:26:25 AM

Wiley,

This email is confirming that the U.S. Fish and Wildlife Service's Partners for Fish and Wildlife Program intend to contribute \$5,000.00 in cash/supplies and \$10,000.00 in other in-kind services towards The Nature Conservancies wetland restoration efforts in the Anoka Sand Plain Proposal.

John Riens
Minnesota Private Lands Office
434 Great Oak Drive
Waite Park, MN 56387
(320) 253-4682 ext. 12
(320) 333-1155 (Cell)
(320) 253-0710 (Fax)