

Lessard-Sams Outdoor Heritage Council

Fiscal Year 2022 / ML 2021 Request for Funding



Date: June 25, 2020

Program or Project Title: Martin County WMA Acquisition Phase 5 (PA10)

Funds Requested: \$9,335,600

Manager's Name: Doug Hartke

Organization: Fox Lake Conservation League, Inc.

Address: PO Box 212

City: Sherburn, MN 56171

Mobile Number: 507-236-1700

Email: doughartke@gmail.com

County Locations: Martin, and Watonwan.

Eco regions in which work will take place:

- Prairie

Activity types:

- Protect in Fee

Priority resources addressed by activity:

- Wetlands
- Prairie
- Habitat

Abstract:

This program will continue our conservation partnership into Phase 5 and will continue to protect and restore diverse prairie and wetland habitat in areas that adjoin existing MN DNR WMAs. Parcels are identified with representatives of local government, Windom Area MN DNR, Ducks Unlimited (DU), The Conservation Fund (TCF), the Fox Lake Conservation League, Inc. (FLCL), and other local partners. Wetland restoration and additional grasslands are needed to make our WMA habitats resilient. We will use the real estate expertise of TCF, wetland and grassland restoration expertise of DU, and the local conservation efforts of FLCL to ensure success.

Design and scope of work:

Selective project sites will be targeted for protection and restoration by the habitat needs and land availability in areas adjacent to existing WMAs, existing habitat and land already protected from development or other land use change. Work is designed to provide the most habitat value. The landscape will be restored as close as possible to conditions that existed prior to its conversion to agricultural production. Wetlands will be restored without the disruption of the natural drainage system. Native vegetation will be restored with a diverse range of species suitable to the landscape.

TCF will negotiate the acquisition and lead the real estate process for properties targeted in this proposal. FLCL will hold and monitor the properties during the restoration work, which will be completed by DU. The restored lands will then be conveyed to the MN DNR.

How does the proposal address habitats that have significant value for wildlife species of greatest conservation need, and/or threatened or endangered species, and list targeted species:

This project will protect threatened habitats in Martin and SE Watonwan Counties. Native prairie and high quality wetlands will be protected, buffered and expanded upon. Restoration sites will provide the opportunity to expand populations of at-risk and threatened plant species that Martin SWCD has propagated and introduced into permanent protected sites. The FLCL is continuing the work Martin SWCD initiated, by selecting additional locally rare at-risk species for propagation and use on this and future habitat

restoration projects to protect the local native seed source. While hundreds of Sullivant's milkweed (*Asclepia sullivantii*) and Tuberous Indian Plantain (*Cacalia tuberosa*) have been introduced into WMAs and other protected land, Small white lady's slipper (*Cypripedium candidum*) and Rattlesnake master (*Eryngium yuccifolium*) will continue to be propagated using local source plant material for use in this project. Parcels selected for this proposal expand habitat protection for the threatened Blanding's Turtle (*Emydoidea blandingii*) Perch Creek population that has been studied by the MN DNR and featured in the "MN Volunteer".

What is the degree of timing/opportunistic urgency and why it is necessary to spend public money for this work as soon as possible:

We continue to have great success with our previous funding by protecting over 800-acres in 2019 and 2020 alone. It can be a once-in-a-lifetime opportunity when we find a willing seller that will sell some of our highest priority native habitat and marginal agricultural lands in proximity to WMAs and other protected natural habitats. If we don't act immediately, these lands may never become available in the future and may be converted to other uses, with degradation or complete elimination of natural features and high value resources that currently exist.

Describe how the proposal uses science-based targeting that leverages or expands corridors and complexes, reduces fragmentation or protects areas identified in the MN County Biological Survey:

Our "Martin County Conservation Alliance" has grown into a planning group that includes wildlife group representatives, NGO's, local government, and state agencies. There is a wide range of knowledge and interest within the group. Historic information, the MN County Biologic Survey, and local knowledge help identify areas where habitat restoration will likely be most beneficial for multiple reasons. Expanding habitat adjacent to existing high quality native habitat and habitat already protected by public ownership or perpetual conservation easements are targeted. Sites with threatened, endangered and species in-decline are good targets to build upon, especially when these expansions can link sites to help extend corridors, expand blocks, and protect and enhance habitat buffers along water courses and lake chains. On our parcel list, we have the following tracts that have areas of biodiversity significance as identified by the MN County Biological Survey:

Perch Creek WMA has a high level of biodiversity significance. Perch Creek is also part of a Pheasant Habitat Complex.

Caron WMA has a moderate level of biodiversity significance and also has a Priority Shallow Lake as identified by MNDNR Wildlife. Caron WMA is also part of a Pheasant Habitat Complex.

Gruven WMA is home to a moderate amount of biodiversity significance.

Which sections of the Minnesota Statewide Conservation and Preservation Plan are applicable to this project:

- H5 Restore land, wetlands and wetland-associated watersheds
- H7 Keep water on the landscape

Which other plans are addressed in this proposal:

- Long Range Duck Recovery Plan
- Minnesota's Wildlife Management Area Acquisition - The Next 50 Years

Describe how your program will advance the indicators identified in the plans selected:

Our program is developed in coordination with MN DNR Wildlife staff to ensure the parcels selected and the restoration work planned meets the needs and guidelines outlined in the MN WMA Acquisition plan. With all of the partners who help plan our program, multiple use is a major consideration in developing the parcels and restoration of the habitat on each parcel. With all of the drained prairie potholes on the landscape, elements of the Long Range Duck Recovery Plan can be easily addressed. The protection and enhancement of the prairie pothole landscape will provide quality breeding habitat as well as resting areas for migratory birds. This restored landscape will also provide multiple recreational opportunities for the future.

Which LSOHC section priorities are addressed in this proposal:

Prairie:

- Protect, enhance, or restore existing wetland/upland complexes, or convert agricultural lands to new wetland/upland habitat complexes

Describe how your program will produce and demonstrate a significant and permanent conservation legacy and/or outcomes for fish, game, and wildlife as indicated in the LSOHC priorities:

Our program continues to build upon the protection and restoration of high quality prairie and wetland habitat. The planned acquisition, protection, and restoration projects expand existing areas that are already locally recognized as a significant, permanent conservation legacy. The many partners involved with permanent conservation work in Martin County, (MN DNR, USFWS, Pheasants Forever, Ducks Unlimited, FLCL, and other local clubs) working to provide landowners with an acquisition option plus the MN BWSR working through SWCDs and the USDA working through FSA and NRCS to provide an easement option, has provided a network of over 10,000 acres of permanently-protected wildlife habitat in Martin County. With this program expanding our local priority area into Watonwan County, the Perch Creek habitat corridor is becoming a more significant and permanent conservation legacy, protecting threatened, endangered, and at-risk species and expanding fishing and hunting opportunities in this region of the state.

Relationship to other funds:

- Not Listed

Describe the relationship of the funds:

Not Listed

Does this program include leverage in funds:

No

Per MS 97A.056, Subd. 24, Any state agency or organization requesting a direct appropriation from the OHF must inform the LSOHC at the time of the request for funding is made, whether the request is supplanting or is a substitution for any previous funding that was not from a legacy fund and was used for the same purpose:

This proposal does not supplant or substitute previous funding for the same purpose.

Describe the source and amount of non-OHF money spent for this work in the past:

Appropriation Year	Source	Amount
2014	LCCMR	400000

How will you sustain and/or maintain this work after the Outdoor Heritage Funds are expended:

Maintaining partners and improving this work after our restoration plans are implemented will be the responsibility of the MN DNR with support from project partner ECP CPL grants if and when available to continue to assist the MN DNR. Also local groups within the "Martin County Conservation Alliance" will be there to assist the MN DNR with future dollars. Local partners will continue to install additional local source native plant species to enhance habitat to support more species, including pollinators. Local partner monitoring will assist in identifying invasive species threats and provide assistance with eradication or control when necessary.

Explain the things you will do in the future to maintain project outcomes:

Year	Source of Funds	Step 1	Step 2	Step 3
Ongoing	Local	Monitor to add local species	Monitor for invasive species	Treat and Plant as needed
Ongoing	MN DNR Budget	Monitoring	Maintenance	Management

Identify indicator species and associated quantities this habitat will typically support:

With the restoration of highly diverse prairie and wetland habitat on these parcels, we expect to produce 200 rooster pheasants per year. By incorporating multiple species of native milkweeds we expect to produce 2,000 to 6,000 monarchs per year. Approximately 400 pairs of grasshopper sparrow and 300 pair of Bobolinks could potentially be found on this protected and restored prairie. With the number of trumpeter swans nesting in this area, we would expect to find up to 4 pairs of swans on restored wetlands. Approximately 280 new pairs of mallard ducks should find a home on the restored highly diverse wetland/prairie complex.

Activity Details

Requirements:

If funded, this proposal will meet all applicable criteria set forth in MS 97A.056 - **Yes**

Will county board or other local government approval be formally sought prior to acquisition, per 97A.056 subd 13(j) - **Yes**

Is the land you plan to acquire (fee title) free of any other permanent protection - **Yes**

Do you anticipate federal funds as a match for this program - **No**

Land Use:

Will there be planting of corn or any crop on OHF land purchased or restored in this program - **Yes**

Explain

Temporary cropping may be used to prepare land for restoration and native food producing species will be planted to reduce reliance on food plots. If needed food plots will be used and managed by the MN DNR.

Is this land currently open for hunting and fishing - **No**

Will the land be open for hunting and fishing after completion - **Yes**

These acquisitions will be part of the MN DNR WMA's so all land will be open to the public.

Are there currently trails or roads on any of the acquisitions on the parcel list - **No**

Will new trails or roads be developed or improved as a result of the OHF acquisition - **No**

Will the land that you acquire (fee or easement) be restored or enhanced within this proposals funding and availability? - **Yes**

Land Use:

Have you received OHF dollars in the past through LSOHC? - **Yes**

Past appropriations and spending to date:

Apprp Year	Approp Amount Received	Approp Amount Spent to Date	Leverage as Reported in AP/th>	Leverage Realized to Date	Total Acres Affected in AP	Total Acres Affected to Date	Program Complete and Final Report Approved?
2016	1000000	1035000	0	35000	140	140	no
2018	2447000	1825300	0	0	352	352	no
2019	3650000	2698000	0	0	462	462	no
2020	2613700	0	0	0	0	0	

Accomplishment Timeline

Activity	Approximate Date Completed
Begin Acquisition Negotiation	October 2021
Acquire Parcel(s)	Fall 2021 - Fall 2023
Plan Restoration	Winter 2021
Transfer Parcel to MN DNR	2022
Complete Restoration	2023-2025
Follow-up/Maintenance/Weed Control	2023 and beyond

Budget Spreadsheet

Total Amount of Request: \$9,335,600

Budget and Cash Leverage

BudgetName	LSOHC Request	Anticipated Leverage	Leverage Source	Total
Personnel	\$313,300	\$0		\$313,300
Contracts	\$1,241,000	\$0		\$1,241,000
Fee Acquisition w/ PILT	\$6,940,000	\$0		\$6,940,000
Fee Acquisition w/o PILT	\$0	\$0		\$0
Easement Acquisition	\$0	\$0		\$0
Easement Stewardship	\$0	\$0		\$0
Travel	\$24,500	\$0		\$24,500
Professional Services	\$100,000	\$0		\$100,000
Direct Support Services	\$26,800	\$0		\$26,800
DNR Land Acquisition Costs	\$100,000	\$0		\$100,000
Capital Equipment	\$0	\$0		\$0
Other Equipment/Tools	\$6,000	\$0		\$6,000
Supplies/Materials	\$427,000	\$0		\$427,000
DNR IDP	\$157,000	\$0		\$157,000
Total	\$9,335,600	\$0	-	\$9,335,600

Personnel

Position	FTE	Over # of years	LSOHC Request	Anticipated Leverage	Leverage Source	Total
Ducks Unlimited Conservation Staff - Biologists and Engineers	0.40	3.00	\$163,300	\$0		\$163,300
MN Real Estate Staff	0.25	3.00	\$75,000	\$0		\$75,000
Grant Administration	0.25	3.00	\$75,000	\$0		\$75,000
Total	0.90	9.00	\$313,300	\$0	-	\$313,300

Budget and Cash Leverage by Partnership

BudgetName	Partnership	LSOHC Request	Anticipated Leverage	Leverage Source	Total
Personnel	Ducks Unlimited	\$163,300	\$0		\$163,300
Contracts	Ducks Unlimited	\$1,041,000	\$0		\$1,041,000
Fee Acquisition w/ PILT	Ducks Unlimited	\$0	\$0		\$0
Fee Acquisition w/o PILT	Ducks Unlimited	\$0	\$0		\$0
Easement Acquisition	Ducks Unlimited	\$0	\$0		\$0
Easement Stewardship	Ducks Unlimited	\$0	\$0		\$0
Travel	Ducks Unlimited	\$18,000	\$0		\$18,000
Professional Services	Ducks Unlimited	\$0	\$0		\$0
Direct Support Services	Ducks Unlimited	\$16,300	\$0		\$16,300
DNR Land Acquisition Costs	Ducks Unlimited	\$0	\$0		\$0
Capital Equipment	Ducks Unlimited	\$0	\$0		\$0
Other Equipment/Tools	Ducks Unlimited	\$6,000	\$0		\$6,000
Supplies/Materials	Ducks Unlimited	\$427,000	\$0		\$427,000
DNR IDP	Ducks Unlimited	\$157,000	\$0		\$157,000
Total	-	\$1,828,600	\$0	-	\$1,828,600

Personnel - Ducks Unlimited

Position	FTE	Over # of years	LSOHC Request	Anticipated Leverage	Leverage Source	Total
Ducks Unlimited Conservation Staff - Biologists and Engineers	0.40	3.00	\$163,300	\$0		\$163,300
Total	0.40	3.00	\$163,300	\$0	-	\$163,300

BudgetName	Partnership	LSOHC Request	Anticipated Leverage	Leverage Source	Total
Personnel	The Conservation Fund	\$75,000	\$0		\$75,000
Contracts	The Conservation Fund	\$0	\$0		\$0
Fee Acquisition w/ PILT	The Conservation Fund	\$0	\$0		\$0
Fee Acquisition w/o PILT	The Conservation Fund	\$0	\$0		\$0

Easement Acquisition	The Conservation Fund	\$0	\$0	\$0
Easement Stewardship	The Conservation Fund	\$0	\$0	\$0
Travel	The Conservation Fund	\$3,000	\$0	\$3,000
Professional Services	The Conservation Fund	\$100,000	\$0	\$100,000
Direct Support Services	The Conservation Fund	\$10,500	\$0	\$10,500
DNR Land Acquisition Costs	The Conservation Fund	\$0	\$0	\$0
Capital Equipment	The Conservation Fund	\$0	\$0	\$0
Other Equipment/Tools	The Conservation Fund	\$0	\$0	\$0
Supplies/Materials	The Conservation Fund	\$0	\$0	\$0
DNR IDP	The Conservation Fund	\$0	\$0	\$0
Total		\$188,500	\$0	\$188,500

Personnel - The Conservation Fund

Position	FTE	Over # of years	LSOHC Request	Anticipated Leverage	Leverage Source	Total
MN Real Estate Staff	0.25	3.00	\$75,000	\$0		\$75,000
Total	0.25	3.00	\$75,000	\$0		\$75,000

BudgetName	Partnership	LSOHC Request	Anticipated Leverage	Leverage Source	Total
Personnel	FoxLake Conservation League	\$75,000	\$0		\$75,000
Contracts	FoxLake Conservation League	\$200,000	\$0		\$200,000
Fee Acquisition w/ PILT	FoxLake Conservation League	\$6,940,000	\$0		\$6,940,000
Fee Acquisition w/o PILT	FoxLake Conservation League	\$0	\$0		\$0
Easement Acquisition	FoxLake Conservation League	\$0	\$0		\$0
Easement Stewardship	FoxLake Conservation League	\$0	\$0		\$0
Travel	FoxLake Conservation League	\$3,500	\$0		\$3,500
Professional Services	FoxLake Conservation League	\$0	\$0		\$0
Direct Support Services	FoxLake Conservation League	\$0	\$0		\$0
DNR Land Acquisition Costs	FoxLake Conservation League	\$100,000	\$0		\$100,000
Capital Equipment	FoxLake Conservation League	\$0	\$0		\$0
Other Equipment/Tools	FoxLake Conservation League	\$0	\$0		\$0
Supplies/Materials	FoxLake Conservation League	\$0	\$0		\$0
DNR IDP	FoxLake Conservation League	\$0	\$0		\$0
Total		\$7,318,500	\$0		\$7,318,500

Personnel - Fox Lake Conservation League

Position	FTE	Over # of years	LSOHC Request	Anticipated Leverage	Leverage Source	Total
Grant Administration	0.25	3.00	\$75,000	\$0		\$75,000
Total	0.25	3.00	\$75,000	\$0		\$75,000

Amount of Request: \$9,335,600
Amount of Leverage: \$0
Leverage as a percent of the Request: 0.00%
DSS + Personnel: \$340,100
As a % of the total request: 3.64%
Easement Stewardship: \$0
As a % of the Easement Acquisition: -%

How did you determine which portions of the Direct Support Services of your shared support services is direct to this program:

TCF - Our real estate staff keeps hourly time sheets to track direct time spent on projects by grant source. We have used those past metrics to estimate the DSS that will be direct to this program.

DU - Minnesota DNR grants staff previously reviewed and approved DU accounting methodology for Direct Support Services, which are calculated and included in DU staff costs. DU Direct Support Services constitute approximately 10% of DU overall staff costs on average

among DU conservation staff billing categories. DU breaks out and invoices for Direct Support Service expenses approved by DNR for reimbursement separately from Personnel expenses. In accordance with 2 CFR 200, DU uses the direct allocation method of allocating costs to programs and final cost objectives. This process of allocating costs is accomplished through the use of hourly rates. The direct cost of activities, including direct support expenses, is included in these hourly rates. The rates are comprised of costs for salaries, benefits, office space, general insurance, support staff, office supplies, and other various direct expenses incurred at the regional offices and conservation department at the home office. All costs are assigned to conservation projects (net of applicable personnel and other costs that are non-conservation related.) Hourly charges represent the amount that DU charges conservation projects per hour for each staff member working on the project. These costs represent expenses that directly support the labor cost necessary for the development of a specific water/wetlands conservation project.

What is included in the contracts line?

FLCL --Tree and Fenceline Removal

DU - private earth-moving contractor charges to restore and enhance wetlands and grasslands. Wetland restoration in southern Minnesota is expensive and requires engineering due to intensive landscape drainage via complex networks of private/public tile/ditches that affect public roads and private neighbors.

Does the amount in the travel line include equipment/vehicle rental? - Yes

Explain the amount in the travel line outside of traditional travel costs of mileage, food, and lodging:

FLCL--None.

I understand and agree that lodging, meals, and mileage must comply with the current MMB Commissioner Plan: - Yes

Describe and explain leverage source and confirmation of funds:

Not Listed

Does this proposal have the ability to be scalable? - Yes

Tell us how this project would be scaled and how administrative costs are affected, describe the “economy of scale” and how outputs would change with reduced funding, if applicable:

There are 9 parcels in our proposal and all are scalable to the amount of funding on a per parcel basis.

Has funding for these positions been requested in the past? - Yes

Please explain the overlap of past and future staffing and position levels previously received and how that is coordinated over multiple years?

TCF - MN Real Estate staff track time spent hourly on individual parcels within this program. There is no overlap of past or future staffing of these positions due to the specificity of tracking the time spent by project.

DU - DU assigns site-specific, unique project numbers to each land acquisition or wetland restoration project, and biologist/engineering staff charge time and expenses to these specific project number codes so charges are tracked to specific sites by each individual. Furthermore, charges are only billed to one OHF grant or another, therefore staff charges can be spread among multiple projects funded by multiple grants. Despite DU staff working on multiple projects and grants throughout the year, DU staff cost invoicing is OHF grant-specific. This allows the team of DU 12+ DU staff working in Minnesota to work on multiple projects throughout the state with multiple OHF grants throughout the year. DU strives to minimize overlap among OHF grants for the same program, and we strive to spend acquisition funds from earlier grants first before more recent grants. Restoration work overlaps by nature, however, due to the time it takes to plan and restore land.

What is the anticipated number of fee title acquisition transactions?

If fully funded we estimate closing on 8 parcels.

Output Tables

Table 1a. Acres by Resource Type

Type	Wetlands	Prairies	Forest	Habitats	Total
Restore	0	0	0	0	0
Protect in Fee with State PILT Liability	96	870	0	79	1,045
Protect in Fee W/O State PILT Liability	0	0	0	0	0
Protect in Easement	0	0	0	0	0
Enhance	0	0	0	0	0
Total	96	870	0	79	1,045

Table 1b. How many of these Prairie acres are Native Prairie?

Type	Native Prairie
Restore	0
Protect in Fee with State PILT Liability	1,045
Protect in Fee W/O State PILT Liability	0
Protect in Easement	0
Enhance	0
Total	1,045

Table 2. Total Requested Funding by Resource Type

Type	Wetlands	Prairies	Forest	Habitats	Total
Restore	\$0	\$0	\$0	\$0	\$0
Protect in Fee with State PILT Liability	\$1,585,600	\$7,750,000	\$0	\$0	\$9,335,600
Protect in Fee W/O State PILT Liability	\$0	\$0	\$0	\$0	\$0
Protect in Easement	\$0	\$0	\$0	\$0	\$0
Enhance	\$0	\$0	\$0	\$0	\$0
Total	\$1,585,600	\$7,750,000	\$0	\$0	\$9,335,600

Table 3. Acres within each Ecological Section

Type	Metro/Urban	Forest/Prairie	SE Forest	Prairie	Northern Forest	Total
Restore	0	0	0	0	0	0
Protect in Fee with State PILT Liability	0	0	0	1,045	0	1,045
Protect in Fee W/O State PILT Liability	0	0	0	0	0	0
Protect in Easement	0	0	0	0	0	0
Enhance	0	0	0	0	0	0
Total	0	0	0	1,045	0	1,045

Table 4. Total Requested Funding within each Ecological Section

Type	Metro/Urban	Forest/Prairie	SE Forest	Prairie	Northern Forest	Total
Restore	\$0	\$0	\$0	\$0	\$0	\$0
Protect in Fee with State PILT Liability	\$0	\$0	\$0	\$9,335,600	\$0	\$9,335,600
Protect in Fee W/O State PILT Liability	\$0	\$0	\$0	\$0	\$0	\$0
Protect in Easement	\$0	\$0	\$0	\$0	\$0	\$0
Enhance	\$0	\$0	\$0	\$0	\$0	\$0
Total	\$0	\$0	\$0	\$9,335,600	\$0	\$9,335,600

Table 5. Average Cost per Acre by Resource Type

Type	Wetlands	Prairies	Forest	Habitats
Restore	\$0	\$0	\$0	\$0
Protect in Fee with State PILT Liability	\$16,517	\$8,908	\$0	\$0
Protect in Fee W/O State PILT Liability	\$0	\$0	\$0	\$0
Protect in Easement	\$0	\$0	\$0	\$0
Enhance	\$0	\$0	\$0	\$0

Table 6. Average Cost per Acre by Ecological Section

Type	Metro/Urban	Forest/Prairie	SE Forest	Prairie	Northern Forest
Restore	\$0	\$0	\$0	\$0	\$0
Protect in Fee with State PILT Liability	\$0	\$0	\$0	\$8,934	\$0
Protect in Fee W/O State PILT Liability	\$0	\$0	\$0	\$0	\$0
Protect in Easement	\$0	\$0	\$0	\$0	\$0
Enhance	\$0	\$0	\$0	\$0	\$0

Automatic system calculation / not entered by managers

Target Lake/Stream/River Feet or Miles

0

I have read and understand Section 15 of the Constitution of the State of Minnesota, Minnesota Statute 97A.056, and the Call for Funding Request. I certify I am authorized to submit this proposal and to the best of my knowledge the information provided is true and accurate.

Outcomes

Programs in prairie region:

- Key core parcels are protected for fish, game and other wildlife *By adding these important parcels to the Martin County and Watonwan County WMA complexes we are adding valuable grasslands to the WMAs of Southern Minnesota. This additional diverse upland habitat will provide much needed habitat for many wildlife species. This project will also add valuable acres for public hunting, fishing and other outdoor activities with all of the fish, game, and rare species that will be found on this new public land. The measurable habitat value will be based on the diversity of habitat protected and restored and the volume of public use these new acres receive.*

Parcel List

Explain the process used to select, rank and prioritize the parcels:

Fox Lake Conservation is a leader in public lands acquisitions in Martin County and is continually working with the MN DNR to best qualify parcels that need to be acquired to improve the state WMA holdings in Martin County.

Section 1 - Restore / Enhance Parcel List

No parcels with an activity type restore or enhance.

Section 2 - Protect Parcel List

Martin

Name	TRDS	Acres	Est Cost	Existing Protection?	Hunting?	Fishing?
Caron WMA Parcel 13A	10 333225	135	\$1,050,000	No	Full	Not Applicable
Caron WMA Parcel 13B	10 333226	209	\$1,600,000	No	Full	Not Applicable
Caron WMA Parcel 14	10 333224	80	\$580,000	No	Full	Not Applicable
Caron WMA Parcel 15	10 333225	50	\$335,000	No	Full	Not Applicable
East Fork WMA Parcel 1A	10 332208	120	\$800,000	No	Full	Not Applicable
East Fork WMA Parcel 2A	10 332208	110	\$500,000	No	Full	Not Applicable
Gruven WMA Parcel #6	10 330 236	181	\$750,000	No	Full	Not Applicable

Watonwan

Name	TRDS	Acres	Est Cost	Existing Protection?	Hunting?	Fishing?
Perch Creek Parcel 17	10 530 230	150	\$1,250,000	No	Full	Not Applicable

Section 2a - Protect Parcel with Bldgs

Martin

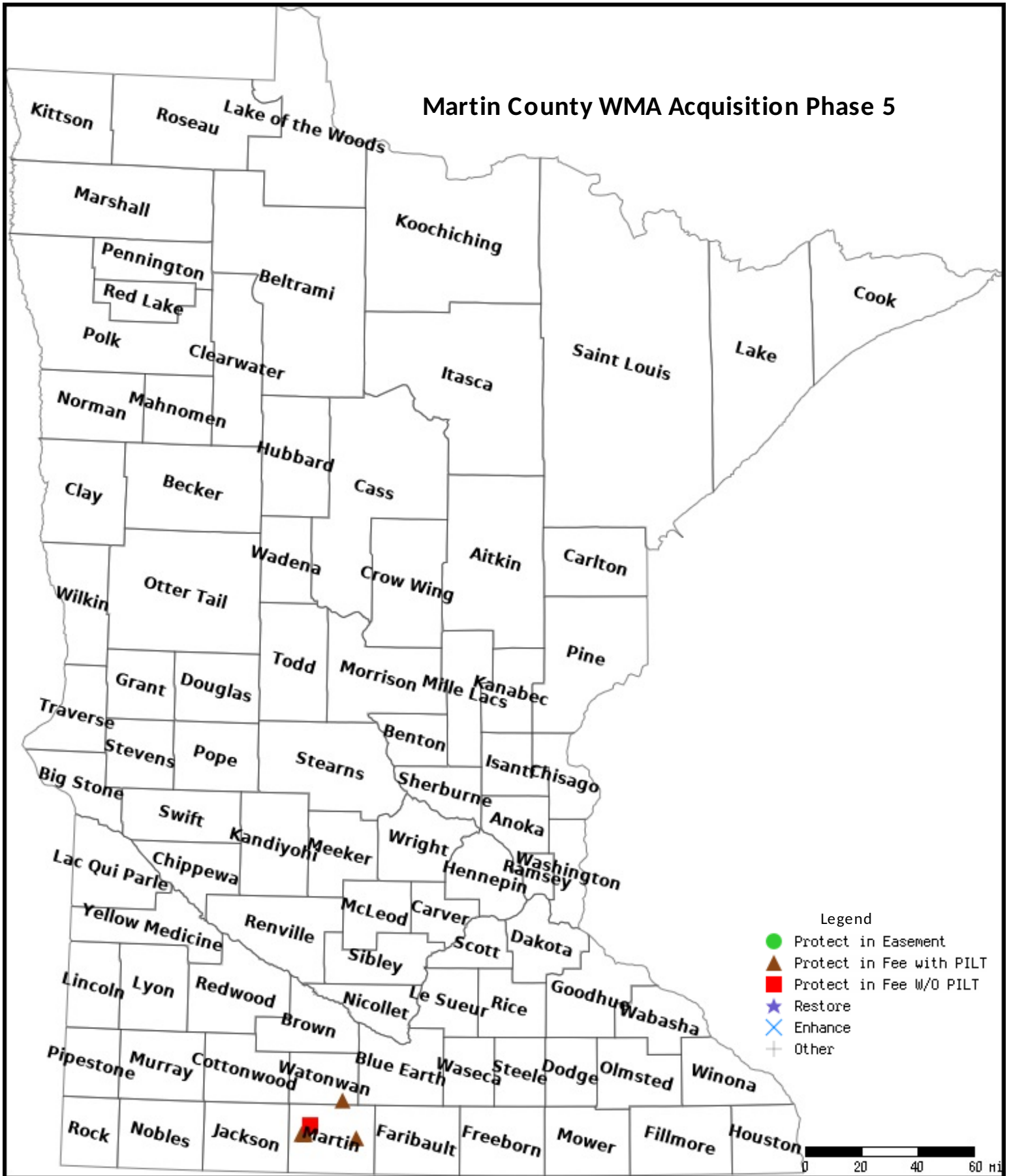
Name	TRDS	Acres	Est Cost	# Bldgs?	Bldg Improve Desc	Value of Bldg	Disposition of Improvements
East Fork WMA Parcel 1B	10 332208	10	\$75,000	3	N/A	\$0	

Section 3 - Other Parcel Activity

No parcels with an other activity type.

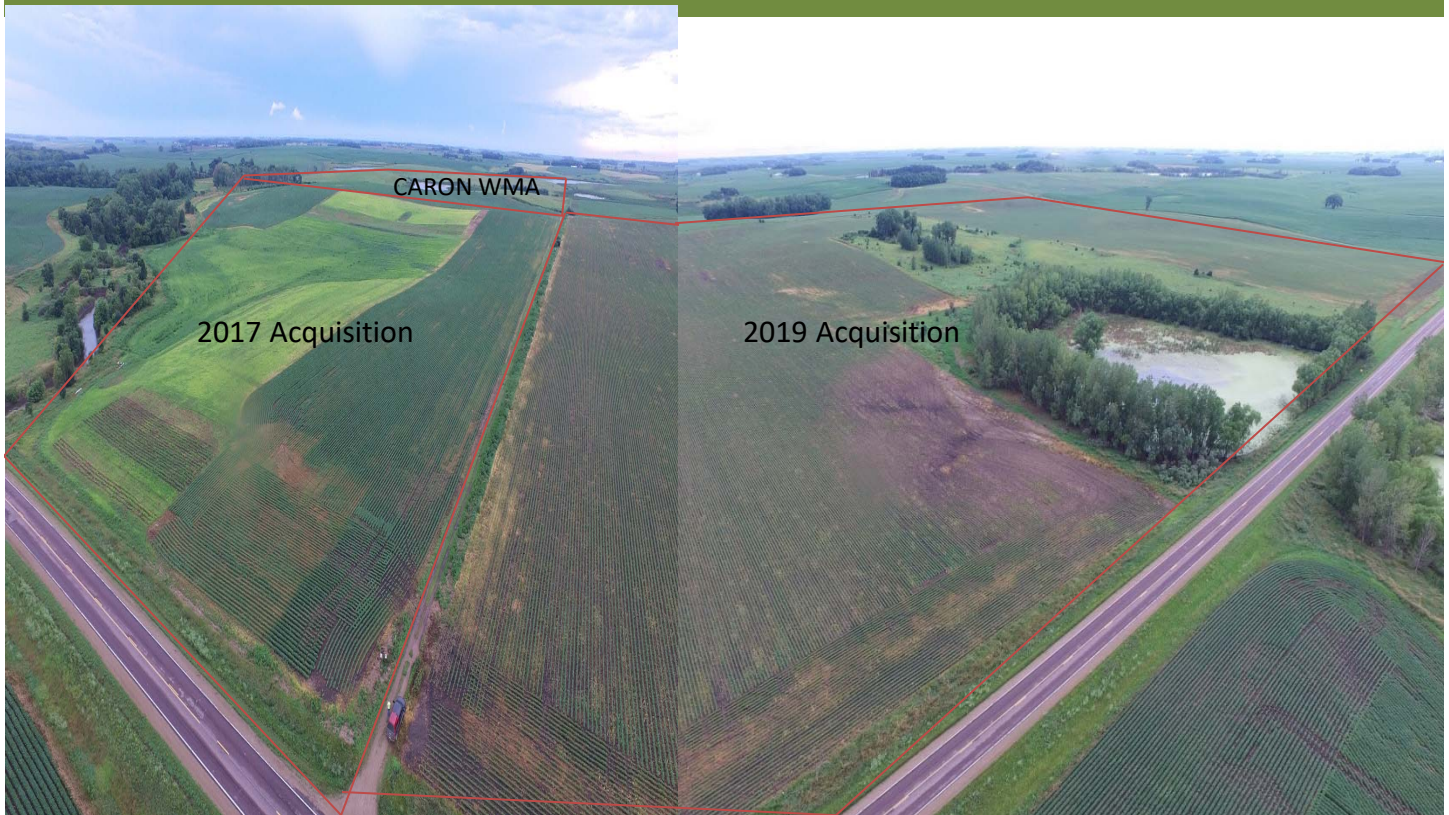
Parcel Map

Martin County WMA Acquisition Phase 5



Data Generated From Parcel List

Martin County Wildlife Areas Phase V



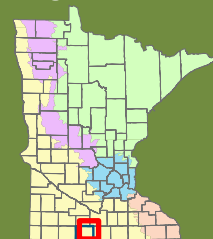
This program continues the successful partnership among local and statewide organizations to protect and restore strategic prairie and wetland habitat in areas adjacent to existing DNR Wildlife Management Areas in Martin County. Building on previous investments by local conservation clubs and state agencies, the partners will protect and restore habitat in the places that matter most for wildlife in Martin County.

Acquisition is the most resource-intensive way to protect habitat, so partners are strategic to only acquire areas that will result in the most habitat and public access benefits. Conservation complexes were selected in Martin County by conservation partners and local community members for their existing and potential conservation value.

To continue the strong local support for conservation projects in Martin County, partners will communicate with local elected officials to ensure that permanent protection aligns with the conservation goals of the community.

This partnership will use the real estate expertise of The Conservation Fund, wetland and grassland restoration expertise of Ducks Unlimited, and the local efforts of the Fox Lake Conservation League to ensure success of this conservation effort.

Program Area



Partners

Fox Lake Conservation League
Ducks Unlimited
The Conservation Fund

FY21 Funding Requested

\$9.336 million

Previous OHF Funding

Phase I – acquisition completed
Phase II – 2 acquisitions completed
Phase III – 2 acquisitions completed
Phase IV – Appraisal in process

Program Type

Fee Title Acquisition with PILT
Restoration