

Lessard-Sams Outdoor Heritage Council

Fiscal Year 2022 / ML 2021 Request for Funding



Date: June 16, 2020

Program or Project Title: Shell Rock River Habitat Restoration Program - Phase X (HRE04)

Funds Requested: \$3,588,900

Manager's Name: Courtney Phillips
Title: Program/Project Manager
Organization: Shell Rock River Watershed District
Address: 214 West Main Street
City: Albert Lea, MN 56007
Office Number: 507-379-8782
Mobile Number: 507-402-4824
Email: courtney.phillips@co.freeborn.mn.us
Website: www.shellrock.org

County Locations: Freeborn

Eco regions in which work will take place:

- Prairie

Activity types:

- Restore
- Enhance
- Protect in Fee

Priority resources addressed by activity:

- Wetlands
- Prairie
- Habitat

Abstract:

The Shell Rock River Watershed District (SRRWD) Phase X Habitat Restoration Program will restore, enhance, and protect 553 acres of essential prairie upland, wetland, lake and streambank habitat across the watershed. As a result of the strategic projects, key biological functioning parcels will be permanently protected, streambank habitat will be enhanced, vegetation and feeding sources will be restored for migratory fowl habitat and wetlands will be restored from row crop agriculture. Projects in Phase X are critical for the benefit of fish, waterfowl, and wildlife populations, reversing the trend of wetland loss and habitat degradation.

Design and scope of work:

Program Goals:

In 2014, the SRRWD created a phased approach to restore, protect, and enhance degraded habitat conditions by implementing projects on a lake-shed basis. The Watershed Habitat Restoration Program is designed to accomplish the following objectives:

- Create wetlands to improve waterfowl breeding and migratory success
- Remove rough fish species and restore desirable fish, waterfowl and wildlife populations aiming at critical species of concern
- Increase fish habitat, spawning areas and waterfowl nesting areas
- Restore streambanks and increase wildlife habitat and its natural prairie
- Increase and improve the use of restored public natural resources
- Enhance native aquatic rooted vegetation and protect the watershed from invasive species

The program will also interconnect and reestablish important flyway habitats within Minnesota. Once completed, the program will

establish waterfowl and fish populations, increase habitat for wetland dependent wildlife, and create the wildlife mecca that was recorded in the late 1800s.

Specifically, Phase X will contribute to the District's goals by:

- Acquire 247 acres of key targeted acquisitions to protect land along Church Lake, establish upland prairie and wetlands, and improve nesting habitat and waterfowl food sources.
- Enhance 201 acres of wetland basins, reversing wetland loss and habitat degradation
- Habitat enhancements on 23 acres of lakeshore and streambank sites that is critical for wildlife
- Reestablish 82 acres of vegetation into upland prairie from agricultural use in an important flyway that is critical to nesting waterfowl, upland game, and other wading bird species

This proposal uses a programmatic approach to achieve protection, restoration, and enhancement of lakes, wetlands, streams and native prairie landscapes. The program includes projects that are prioritized on the significance of the benefits to aquatic habitat, urgency of the work, availability of leveraged funds, location of projects and agreements with relevant planning documents. The SRRWD has a proven track record with the LSOHC and implementing projects that protect, restore and enhance natural resources. The SRRWD continues to receive strong support for these projects from landowners, local governments and sporting organizations. Finally, this program will preserve an outdoor legacy for Minnesotans to use and enjoy for generations.

Background:

The SRRWD covers 246 square miles inside Freeborn County and includes a complex system of wetlands, streams, and shallow lakes that drain into the Shell Rock River. Managing habitat for this complex system is imperative to the SRRWD as well as understanding its role for providing critical habitat for fish, waterfowl and wildlife. Habitat degradation of wetlands, streams, and shallow lakes is an issue of statewide importance that requires accelerated investment in projects to reverse this degradation. Protection and restoration of this critical habitat is the highest priority of the SRRWD and is directly affected by invasive aquatic vegetation, land use changes, increased water demands, populations of invasive fish species such as common carp, and artificial drainage. Degradation in habitat is influencing available food sources for game fish populations that include Northern Pike, Bluegill, Yellow Perch and Walleye, and duck populations including Northern Pintail, Redhead, Canvasback and Lesser Scaup.

How does the proposal address habitats that have significant value for wildlife species of greatest conservation need, and/or threatened or endangered species, and list targeted species:

The SRRWD understands that when critical habitats are lost due to land use changes and other factors, restoring the habitat is imperative to the protection of species and their ecological processes. Important species are disappearing at an alarming rate and the SRRWD has the opportunity to protect targeted specific habitats and the species that call it home.

Using the Minnesota Department of Natural Resources tool for species in greatest conservation need by habitat, the SRRWD has identified species of importance for the Oak Savanna landscape. Those species include the Marsh Wren and Common Moorhen for birds, mussels such as Sheepnose and Round Pigtoe, and amphibians including the Blanding's Turtle.

One of the fastest declining populations in Minnesota has been the loss of Minnesota's native mussels. The freshwater mussel is threatened by a multitude of sources including dams and stream channelization, wetland drainage, bank erosion, invasive mussels and water pollution. The District is focused on improving habitat and water quality conditions, as well as providing habitat with in-water features that will improve that quality of habitat for threatened Round Pigtoe, and endangered Sheepnose mussels.

The Common Moorhen is listed as special concern in the Oak Savanna habitat and can be attributed to the loss of well-vegetated ponds and wetlands. With projects proposed by Phase X, wetland creation and vegetation enhancement of 283 acres can provide restored habitat for both the Common Moorhen and March Wren. Blanding's turtles are listed as being a threatened species and creating streambank restorations that include habitats such as turtle hibernaculum and restoring wetland with marshy areas will provide habitat for this threatened species.

What is the degree of timing/opportunistic urgency and why it is necessary to spend public money for this work as soon as possible:

With the extent of wetland, streambank, and in-lake habitat loss in Minnesota, restoration efforts are an issue that needs immediate attention. Degraded habitat and impairments remain in the SRRWD that require action to restore and enhance native habitat for many species. Science and resource based planning have been utilized to strategically select projects that will advance restoration goals specified in our Habitat Restoration Program.

LSOHC funds accelerate ongoing conservation efforts by increasing the number of successful projects the District is able to complete each year in the watershed. Projects selected in the program contribute to the success of long-term management plans, key biological functioning parcels will be permanently protected, lakeshores and streambanks will be enhanced, in-lake habitat structures will be created, there will be new and improved access to public lands and vegetation will be restored for migratory fowl habitat.

Describe how the proposal uses science-based targeting that leverages or expands corridors and complexes, reduces fragmentation or protects areas identified in the MN County Biological Survey:

The SRRWD utilizes precision conservation modeling with monitoring to identify Property Management Zones (PMZs) on a sub-watershed basis. The PMZs are prioritized, evaluated conservation measures and project locations chosen to mitigate specific areas contributing to degradation of habitat which reduces populations of aquatic vegetation, fish, waterfowl and wildlife within the lake-shed.

Historically the Shell Rock River Watershed is a shallow lake system with diverse populations of fish, waterfowl and wildlife. With degraded habitat becoming a concern, and more areas listed as below biodiversity significance in the MN County Biological Survey (MCBS) for Freeborn County, the District has ongoing efforts with identifying key PMZs to implement projects that expands habitat corridors and protects areas identified by the MCBS.

One of the land acquisitions is contained within areas identified on the MCBS, permanently projecting the valued significance of the land. The 171 acre wetland and vegetation restoration project contains significant areas. Projects such as these are important to expanding corridors and reaching the targeted nine square mile parcels. Implementing site specific habitat restorations projects, in line with areas identified in the MCBS, are progressively improving populations of native fish, waterfowl and wildlife habitat to once again create a wildlife mecca.

Which sections of the Minnesota Statewide Conservation and Preservation Plan are applicable to this project:

- H2 Protect critical shoreland of streams and lakes
- H5 Restore land, wetlands and wetland-associated watersheds

Which other plans are addressed in this proposal:

- Long Range Plan for Fisheries Management
- North American Waterfowl Management Plan

Describe how your program will advance the indicators identified in the plans selected:

The Habitat Restoration Program accelerates the efforts of the Conservation and Preservation Plan, H2, with the restoration of 23 acres of critical shoreline habitat to protect from degradation and assure public access for fishing and natural resource management. The Habitat Restoration Program also applies the Long Range Plan for Fisheries Management by accelerating the core function of conserving, maintaining, or rehabilitating Minnesota's aquatic resources to serve environmental purposes with streambank land acquisitions and shoreline restorations totaling 45 acres.

The Habitat Restoration Program advances H5 by investing in prioritized wetlands that were drained for agricultural use and converting them back into wetland complexes to improve breeding success and migratory habitat. The 283 acres of multiple wetland restorations and vegetation enhancement will also follow Goal 2 in the North American Waterfowl Management Plan for increasing wetland habitat sufficient to sustain waterfowl population levels.

Which LSOHC section priorities are addressed in this proposal:

Prairie:

- Protect, enhance, or restore existing wetland/upland complexes, or convert agricultural lands to new wetland/upland habitat complexes

Describe how your program will produce and demonstrate a significant and permanent conservation legacy and/or outcomes for fish, game, and wildlife as indicated in the LSOHC priorities:

In Minnesota's prairie region, shallow lake and wetland ecosystems are vital components to a productive landscape for a wide array of animals including waterfowl, furbearers, reptiles, amphibians and fish. It is imperative to recognize the loss of small wetlands and native prairie in the prairie region of Minnesota. The SRRWD is proposing to reverse wetland loss by turning 171 acres of agricultural land into wetlands to provide habitat and food sources for migratory birds.

Two streambank restoration projects will create spawning habitat, cover, and refuge for fish, habitat for wildlife, and will restore the growth of healthy aquatic vegetation. It also demonstrates a permanent conservation legacy by restoring habitat on public lands, increasing public access to fishing, improving native fish reproduction and provides protection from long term endangerment from

invasive plant species by incorporating vegetation management. Key targeted habitat acquisitions comprising of 247 acres will be protected to provide long term habitat for wildlife.

Phase X also plans to protect 36 acres of expiring Conservation Reserve Program (CRP) ground for permanent habitat protection. All restoration and enhancement project will have vegetation management in low grounds that include bulrush, smartweed, and marsh milkweed species to provide habitat and food sources for migratory birds. Upland prairie mix will be established to promote pollinator success. Enhancement efforts to this large scale degree provides habitat for both spring and fall migration of waterfowl, overall increase the use days by migratory birds, and provides nesting habitat.

Relationship to other funds:

- Clean Water Fund

Describe the relationship of the funds:

In 2016, the SRRWD received \$825,000 in Board of Water and Soil Resources (BWSR) Targeted Watershed Funding (Clean Water Fund) that is being used to complete a streambank restoration and two wetland restoration projects. Although the intent for the projects is to increase water quality, those projects have secondary benefits that align with the LSOHC priorities for improved habitat.

Does this program include leverage in funds:

Yes

The Habitat Restoration Program, Phase X, builds and expands upon previous LSOHC funding including the Wedge Creek, White Lake and Fountain Lake Fish Barriers (2009-10); Shell Rock River Headwaters Project (2011-12); Albert Lea Lake Dam and Fish Barrier (2013-14); Goose Creek Fish Barrier (CPL Grant) (2013-14); Shell Rock River Headwaters Restoration, Phase II (CPL Grant) (2014-15); Shell Rock River Watershed Habitat Restoration Program, Phase IV (2015-16); the Habitat Restoration Program, Phase V (2016-17); the Habitat Restoration Program, Phase VI (2017-18) the Habitat Restoration Program, Phase VII (2018-19) and the Phase IX Program (2019-20). The LSOHC funded projects consolidates previous SRRWD projects including the Fish Barrier Program, Streambank Restoration Program, the ISTS Program, and the Wetland Restoration Program.

Per MS 97A.056, Subd. 24, Any state agency or organization requesting a direct appropriation from the OHF must inform the LSOHC at the time of the request for funding is made, whether the request is supplanting or is a substitution for any previous funding that was not from a legacy fund and was used for the same purpose:

Not applicable.

Describe the source and amount of non-OHF money spent for this work in the past:

Appropriation Year	Source	Amount
2012	Local Tax Levy	180,000
2013	Local Tax Levy	230,000
2014	Local Tax Levy	804,750
2015	Local Tax Levy	200,000
2016	Local Tax Levy	750,000
2017	Local Tax Levy	500,000
2018	Local Tax Levy	400,000
2019	Local Tax Levy	400,000

How will you sustain and/or maintain this work after the Outdoor Heritage Funds are expended:

The Shell Rock River Watershed District is authorized by Minnesota state statute 103D and operates under a series of 10 year Water Management Plans that are approved by the Minnesota Board of Soil and Water Resources (BWSR). The District recently updated its second generation waterplan and is entering the One Watershed One Plan (1W1P) Comprehensive Management Plan process. This second generation plan, and 1W1P includes a top to bottom comprehensive list detailing natural resource restoration, management, enhancement and protection strategies.

The SRRWD relies on multiple funding sources including a citizen driven local option sales tax, local levy, and multiple public and private funding sources including previously LSOHC phased project to assist in the District's restoration efforts. The District has an aggressive monitoring protocol that generates yearly data used for extensive reporting. The habitat efforts that accrue from the Phase X

Restoration Program will be easily incorporated into this existing results-driven reporting framework. This reporting can be used to generate public interest and education of a watershed based restoration approach. The District has commitment and funding sources necessary to maintain existing and future natural resource enhancement projects.

Explain the things you will do in the future to maintain project outcomes:

Year	Source of Funds	Step 1	Step 2	Step 3
2023	LSOHC and Sales Tax	Construction and Erosion Control Inspections	Erosion Control and Maintenance Inspections and Implementations	Maintenance Inspections and Implementations
2024	LSOHC and Sales Tax	Construction and Erosion Control Inspections	Erosion Control and Maintenance Inspections and Implementations	Maintenance Inspections and Implementations
2025 and 2026	LSOHC and Sales Tax	Erosion Control and Maintenance Inspections and Implementations		Maintenance Inspections and Implementations

Identify indicator species and associated quantities this habitat will typically support:

The Upper Mississippi River and Great Lakes Region Joint Venture (UMRGLRJV) states for Mallard breeding habitat requirements at least a minimum of one hectare (2.47 acres) is required for each breeding pair. Optimal habitat includes a complex of shallow herbaceous wetland and grasslands. Phase X is proposing 283 acres of shallow wetland restorations that could provide new habitat niches for over 114 nesting pairs. The additional wetland or marsh conditions could provide an additional 1,000 use days for lesser scaup, northern pintail, American bittern and other waterfowl, and provide feeding and nesting ground for the concerned Marsh Wren and Common Moorhen.

With the increased return of the Trumpeter Swan to southern Minnesota, local staff expects to see the increase of four breeding pairs of Swans as a result of the restored wetland restorations. Bobolinks will also increase as a result of associated upland plantings. Pollinators such as Monarchs and bees will have increased food supplies with upland plantings that consist have native flowers. The shoreline restorations will provide habitat structures resulting in a proposed 30% increase in the breeding success and overall biomass of fish and amphibians that can be supported. One additional pair of river otters is expected as a result of the streambank restorations as well. The key targeted property acquisitions will also support a variety of species including the threatened Blanding’s turtle and Round Pigtoe mussel by providing protected shoreline and streambank habitat.

Activity Details

Requirements:

If funded, this proposal will meet all applicable criteria set forth in MS 97A.056 - **Yes**

Will county board or other local government approval be formally sought prior to acquisition, per 97A.056 subd 13(j) - **Yes**

Is the land you plan to acquire (fee title) free of any other permanent protection - **Yes**

Will restoration and enhancement work follow best management practices including MS 84.973 Pollinator Habitat Program - **Yes**

Is the restoration and enhancement activity on permanently protected land per 97A.056, subd 13(f), tribal lands, and/or public waters per MS 103G.005, Subd. 15 - **Yes (WPA, Public Waters)**

Do you anticipate federal funds as a match for this program - **No**

Land Use:

Will there be planting of corn or any crop on OHF land purchased or restored in this program - **No**

Is this land currently open for hunting and fishing - **No**

Will the land be open for hunting and fishing after completion - **Yes**

The Bancroft Streambank and Fountain Lake Shoreline projects will be open to public fishing, but not to public hunting because they fall within the City of Albert Lea's outer limits.

Are there currently trails or roads on any of the acquisitions on the parcel list - **No**

Will new trails or roads be developed or improved as a result of the OHF acquisition - **No**

Will the land that you acquire (fee or easement) be restored or enhanced within this proposals funding and availability? - **Yes**

Land Use:

Have you received OHF dollars in the past through LSOHC? - **Yes**

Past appropriations and spending to date:

Apprp Year	Approp Amount Received	Approp Amount Spent to Date	Leverage as Reported in AP/th>	Leverage Realized to Date	Total Acres Affected in AP	Total Acres Affected to Date	Program Complete and Final Report Approved?
2010	655000	655000	295000	214900	694	694	Yes
2011	2577000	2577000	7665000	7555400	257	257	Yes
2013	1827000	1827000	438800	438800	3100	3100	Yes
2015	2414000	1476600	60000	29500	3235	656	No
2016	1200000	657300	461000	461000	211	90	No
2017	1779000	11300	100000	0	235	0	No
2018	1421000	0	100000	0	112	0	No
2019	2046000	86100	100000	0	315	3	No

Accomplishment Timeline

Activity	Approximate Date Completed
Begin project planning, design, permitting work and acquisitions	July 2022
Begin projects during the 2022 construction season following completion of design, permits, and contracting	2022 Construction Season to 2023
Complete all restoration and habitat improvement projects and finalize acquisitions	End of 2024 Construction Season
Vegetation enhancement on restoration projects; complete final project construction	June 2026
Maintenance and monitoring of all restoration and habitat improvement projects	Ongoing

Budget Spreadsheet

Total Amount of Request: \$3,588,900

Budget and Cash Leverage

Budget Name	LSOHC Request	Anticipated Leverage	Leverage Source	Total
Personnel	\$45,000	\$25,000	Local Option Sales Tax, Local Option Sales Tax	\$70,000
Contracts	\$1,324,500	\$0		\$1,324,500
Fee Acquisition w/ PILT	\$1,342,100	\$0		\$1,342,100
Fee Acquisition w/o PILT	\$0	\$0		\$0
Easement Acquisition	\$0	\$0		\$0
Easement Stewardship	\$0	\$0		\$0
Travel	\$0	\$0		\$0
Professional Services	\$454,800	\$175,000	Local Option Sales Tax	\$629,800
Direct Support Services	\$0	\$0		\$0
DNR Land Acquisition Costs	\$15,000	\$0		\$15,000
Capital Equipment	\$0	\$0		\$0
Other Equipment/Tools	\$0	\$0		\$0
Supplies/Materials	\$407,500	\$0		\$407,500
DNR IDP	\$0	\$0		\$0
Total	\$3,588,900	\$200,000		\$3,788,900

Personnel

Position	FTE	Over # of years	LSOHC Request	Anticipated Leverage	Leverage Source	Total
Program Manager	0.43	1.00	\$25,000	\$10,000	Local Option Sales Tax	\$35,000
Program Assistant	0.43	1.00	\$20,000	\$15,000	Local Option Sales Tax	\$35,000
Total	0.86	2.00	\$45,000	\$25,000		\$70,000

Amount of Request: \$3,588,900

Amount of Leverage: \$200,000

Leverage as a percent of the Request: 5.57%

DSS + Personnel: \$45,000

As a % of the total request: 1.25%

Easement Stewardship: \$0

As a % of the Easement Acquisition: -%

What is included in the contracts line?

All of the work in the contract line is centered on restoration and enhancement projects.

Describe and explain leverage source and confirmation of funds:

The SRRWD is an agency that has a secured local option sales tax in place that will be used to leverage funds.

Does this proposal have the ability to be scalable? - Yes

Tell us how this project would be scaled and how administrative costs are affected, describe the "economy of scale" and how outputs would change with reduced funding, if applicable:

Yes, Phase X has scalable projects; however, a reduction in funds would lead to a decrease in potential projects that the SRRWD could complete.

Has funding for these positions been requested in the past? - Yes

Please explain the overlap of past and future staffing and position levels previously received and how that is coordinated over multiple years?

Staffing includes four positions: the District Administrator, Program Manager, Conservation Specialist and Financial Technician. Staff

time is carefully tracked using time sheets that are project specific to not include overlap in tracking hours.

What is the anticipated number of fee title acquisition transactions?

There are three anticipated fee title acquisitions.

Output Tables

Table 1a. Acres by Resource Type

Type	Wetlands	Prairies	Forest	Habitats	Total
Restore	30	82	0	3	115
Protect in Fee with State PILT Liability	22	0	0	225	247
Protect in Fee W/O State PILT Liability	0	0	0	0	0
Protect in Easement	0	0	0	0	0
Enhance	171	0	0	20	191
Total	223	82	0	248	553

Table 1b. How many of these Prairie acres are Native Prairie?

Type	Native Prairie
Restore	82
Protect in Fee with State PILT Liability	0
Protect in Fee W/O State PILT Liability	0
Protect in Easement	0
Enhance	0
Total	82

Table 2. Total Requested Funding by Resource Type

Type	Wetlands	Prairies	Forest	Habitats	Total
Restore	\$286,500	\$188,000	\$0	\$70,000	\$544,500
Protect in Fee with State PILT Liability	\$80,400	\$0	\$0	\$1,440,800	\$1,521,200
Protect in Fee W/O State PILT Liability	\$0	\$0	\$0	\$0	\$0
Protect in Easement	\$0	\$0	\$0	\$0	\$0
Enhance	\$727,500	\$0	\$0	\$795,700	\$1,523,200
Total	\$1,094,400	\$188,000	\$0	\$2,306,500	\$3,588,900

Table 3. Acres within each Ecological Section

Type	Metro/Urban	Forest/Prairie	SE Forest	Prairie	Northern Forest	Total
Restore	0	0	0	115	0	115
Protect in Fee with State PILT Liability	0	0	0	247	0	247
Protect in Fee W/O State PILT Liability	0	0	0	0	0	0
Protect in Easement	0	0	0	0	0	0
Enhance	0	0	0	191	0	191
Total	0	0	0	553	0	553

Table 4. Total Requested Funding within each Ecological Section

Type	Metro/Urban	Forest/Prairie	SE Forest	Prairie	Northern Forest	Total
Restore	\$0	\$0	\$0	\$544,500	\$0	\$544,500
Protect in Fee with State PILT Liability	\$0	\$0	\$0	\$1,521,200	\$0	\$1,521,200
Protect in Fee W/O State PILT Liability	\$0	\$0	\$0	\$0	\$0	\$0
Protect in Easement	\$0	\$0	\$0	\$0	\$0	\$0
Enhance	\$0	\$0	\$0	\$1,523,200	\$0	\$1,523,200
Total	\$0	\$0	\$0	\$3,588,900	\$0	\$3,588,900

Table 5. Average Cost per Acre by Resource Type

Type	Wetlands	Prairies	Forest	Habitats
Restore	\$9,550	\$2,293	\$0	\$23,333
Protect in Fee with State PILT Liability	\$3,655	\$0	\$0	\$6,404
Protect in Fee W/O State PILT Liability	\$0	\$0	\$0	\$0
Protect in Easement	\$0	\$0	\$0	\$0
Enhance	\$4,254	\$0	\$0	\$39,785

Table 6. Average Cost per Acre by Ecological Section

Type	Metro/Urban	Forest/Prairie	SE Forest	Prairie	Northern Forest
Restore	\$0	\$0	\$0	\$4,735	\$0
Protect in Fee with State PILT Liability	\$0	\$0	\$0	\$6,159	\$0
Protect in Fee W/O State PILT Liability	\$0	\$0	\$0	\$0	\$0
Protect in Easement	\$0	\$0	\$0	\$0	\$0
Enhance	\$0	\$0	\$0	\$7,975	\$0

Automatic system calculation / not entered by managers

Target Lake/Stream/River Feet or Miles

25,639 Feet

I have read and understand Section 15 of the Constitution of the State of Minnesota, Minnesota Statute 97A.056, and the Call for Funding Request. I certify I am authorized to submit this proposal and to the best of my knowledge the information provided is true and accurate.

Outcomes

Programs in prairie region:

- Protected, restored, and enhanced habitat for migratory and unique Minnesota species *will be measured by the increase of use days for migrating waterfowl and improved habitat acres for unique species. The protected, restored and enhanced shallow lakes, wetlands, and streambanks will provide habitat to wildlife and support healthy natural resource conditions for long term benefits. The projects will offer an oasis for migratory waterfowl by re-established and connecting MCBS corridors, and flyway habitats. Improved and permanently protected areas will provide a lasting habitat for Minnesota's unique species and provide improved access to public natural resources.*

Parcel List

Explain the process used to select, rank and prioritize the parcels:

Parcels are selected using the Property Management Zones (PMZs). The PMZs are identified using precision conservation modeling, along with monitoring, and science based targeting. Parcels are then prioritized and ranked based on the degree of habitat degradation, restoration potential, and landowner interest and support.

Section 1 - Restore / Enhance Parcel List

Freeborn

Name	TRDS	Acres	Est Cost	Existing Protection?
Bancroft Stream Enhancement	10 2212932	20	\$188,200	Yes
Fountain Lake Shoreline Enhancement	10 221205	3	\$65,000	Yes
IC & E WPA Wetland Enhancement	10 323201	171	\$720,000	Yes
Leach Wetland Restoration	10 221228	30	\$281,500	No
Pickereel Lake Upland Restoration	10 221219	82	\$183,000	No

Section 2 - Protect Parcel List

Freeborn

Name	TRDS	Acres	Est Cost	Existing Protection?	Hunting?	Fishing?
Church Lake Property	10 222223	22	\$70,400	No	Not Applicable	Limited
Leach Property	10 221228	36	\$198,100	No	No	Not Applicable
Pickereel Lake Property	10 221217	17	\$88,500	No	No	Not Applicable
Pickereel Lake Property	10 221218	17	\$86,300	No	No	Not Applicable
Pickereel Lake Property	10 221219	108	\$779,300	No	No	Not Applicable
Pickereel Lake Property	10 221220	47	\$268,600	No	No	Not Applicable

Section 2a - Protect Parcel with Bldgs

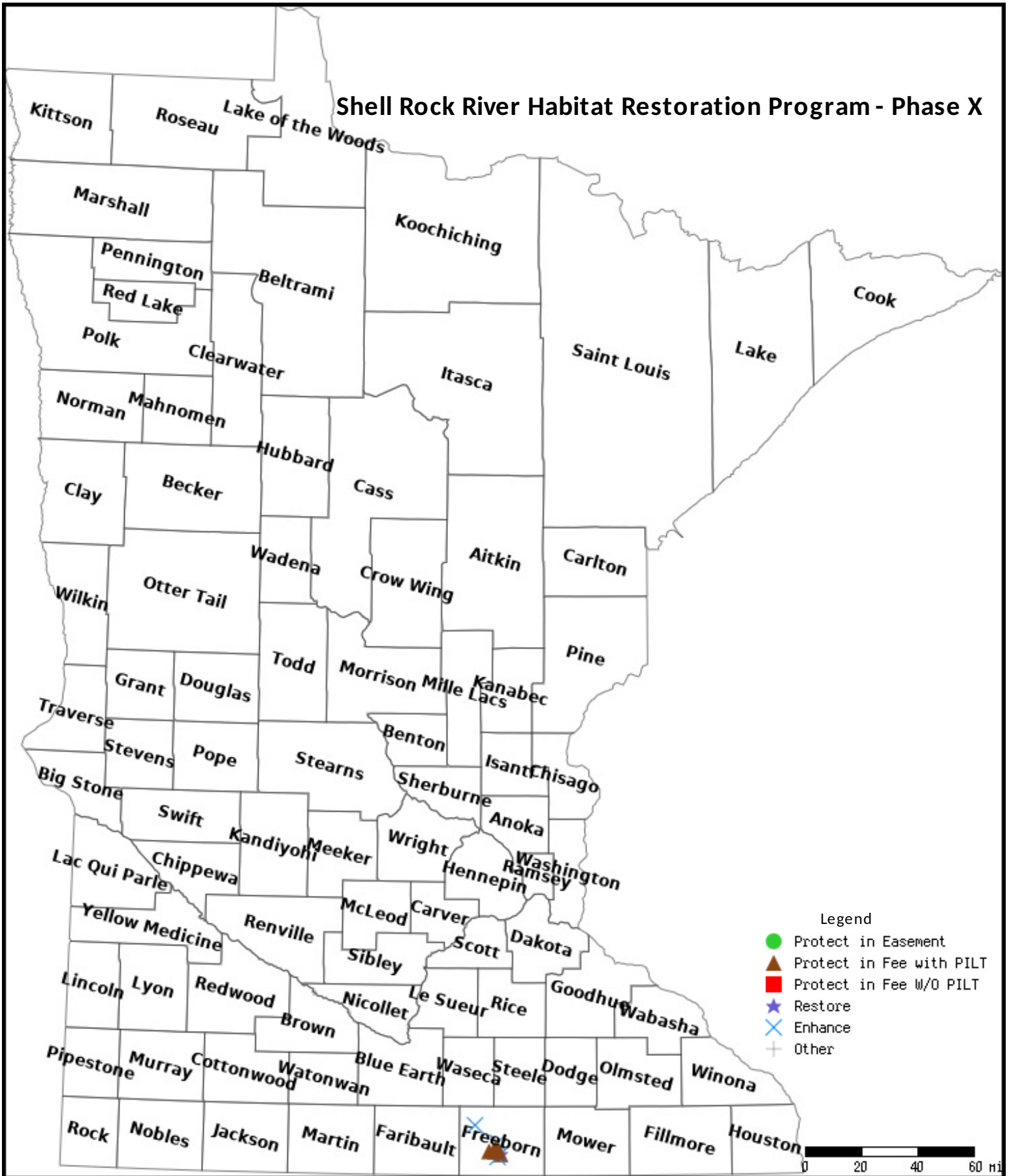
No parcels with an activity type protect and has buildings.

Section 3 - Other Parcel Activity

No parcels with an other activity type.

Parcel Map

Shell Rock River Habitat Restoration Program - Phase X



Data Generated From Parcel List

Shell Rock River Watershed Habitat Restoration Program - Phase X (H RE 04) L-SOHC Fund Request: \$3,588,900

Enhancement

About the Program

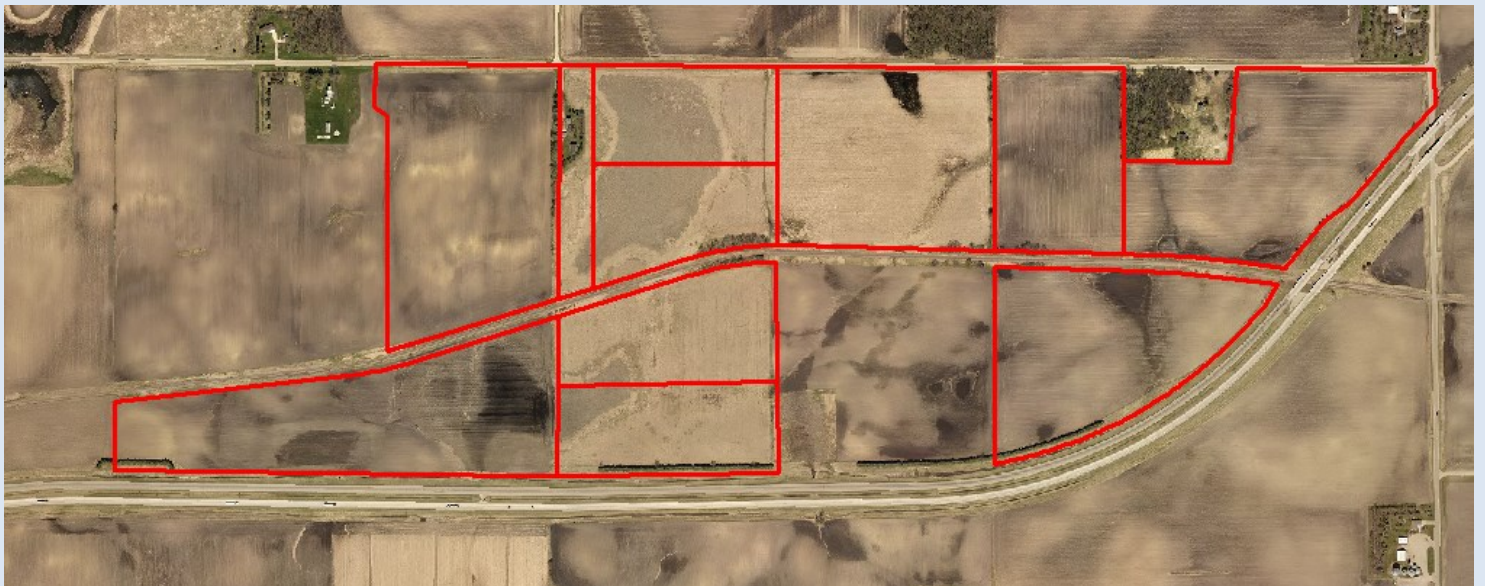


The Watershed Habitat Restoration Program Phase X Proposal will restore, enhance and protect 553 acres of essential shallow lake, wetland and streambank habitat across the watershed.

As a result of the projects, key biological functioning parcels will be permanently protected, streambank habitat will be enhanced, vegetation and feeding sources will be restored for migratory fowl habitat and wetlands will be restored from row crop agriculture.

The restoration will provide optimal feeding locations for dabbling ducks and shorebirds while also providing habitat for species of concern in our area including the Marsh Wren and Common Moorhen.

Bancroft Restoration (left): Streambank restoration to reduce sedimentation that smothers fish eggs and incorporate habitat features for fish and amphibians.



IC & E Restoration: Over 171 acres will be enhanced from agricultural ground into native prairie plantings and wetland restorations to provide habitat for wildlife.

Shell Rock River Watershed Habitat Restoration Program - Phase X (HRE 04) Lessard-Sams Outdoor Heritage Fund Request: \$3,588,900

Protection

Overall benefits of the program include restored desirable fish, waterfowl and wildlife populations, enhanced native aquatic rooted vegetation, increase waterfowl nesting areas, improve waterfowl breeding and migratory success and protect the watershed from invasive species.



Church Lake Property (above):
Protecting 22 acres of woody upland and floodplain habitat from development. Also creating increased public access to public waters and lands and increasing public land size.

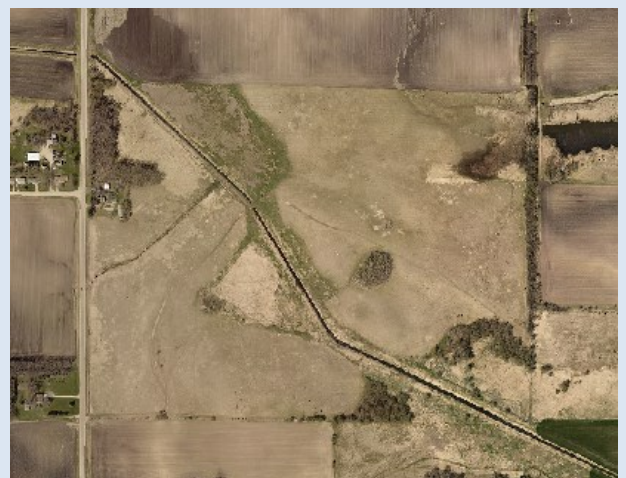
Pickereel Lake Property (left):
Purchasing 189 acres of wetlands and agricultural ground. The ground will be restored to native upland planting to provide habitat and nesting areas to compliment the protected wetlands.

Row Crop Agriculture to Wetlands:

In this proposal, two different parcels will transition from agricultural use back into wetlands, meeting a key LSOHC priority for the prairie region.

The Leach Protection and Restoration project will include purchasing 36 acres of ground that currently enrolled in CRP but set to expire in 2021 and restore the wetlands. This would offer permanent habitat as a result of the restoration efforts for the animals that call it home.

Restoration



**Resolution 2020-08
Shell Rock River Watershed District
L-SOHC Grant Application**

BE IT RESOLVED that the Shell Rock River Watershed District, hereinafter referred to as "Applicant" acts as legal sponsor for the Shell Rock River Watershed Habitat Restoration Program - Phase X contained in the **Lessard-Sams Outdoor Heritage Council (L-SOHC) Application** to be submitted on May 28, 2020, and;

BE IT FURTHER RESOLVED that Applicant is hereby authorized to apply to the LSOHC, hereinafter referred to a "State," for funding of intended projects on behalf of the Applicant.

BE IT FURTHER RESOLVED that the Applicant has the legal authority to apply for financial assistance, and the institutional, managerial and financial capability to ensure adequate acquisition, maintenance and protection of the intended projects.

BE IT FURTHER RESOLVED that the Applicant has not incurred any construction costs or has not entered into any written agreements to purchase property for intended projects.

BE IT FURTHER RESOLVED that the Applicant has not violated any Federal, State, or local laws pertaining to fraud bribery, graft, kickbacks, collusion, conflict of interest or other unlawful or corrupt practice.

BE IT FURTHER RESOLVED that upon approval of the application by the State, the Applicant may enter into an agreement with the State for the above-referenced projects, and that the Applicant certifies that it will comply with all applicable laws and regulations as stated in the contract agreement.

NOW, THEREFORE BE IT RESOLVED that Andy Henschel, District Administrator for the Shell Rock River Watershed District, is hereby authorized to execute such Agreements as are necessary to implement the intended projects on behalf of the Applicant.

Date: May 12, 2020



Mitchell DeJager, Chair



Alan Bakken, Treasurer

L-SOHC Grant -Shell Rock River Watershed Habitat Restoration Program

Project List

Project Title	Description	Est. Cost	Type of Project	Water Plan	Plan Priority Connection	Sub-watershed	Section, Twshp, Range	Acres	Parcel
Pickerele Lake-Adjustable outlet	Install adjustable outlet on Pickerele Lake to enhance lake habit thru periodic draw-downs	\$ 615,250	Restore	TMDL	4.0 Pickerele Lake Table 4-3, Page 15, PL-11, description pg. 21	49016	T102 R22 S13	620	99130010
Upper and Lower Twin Lake Fish Barrier and Reclamation	Maintain and enhance existing game fish population and improve waterfowl habitat	\$ 743,750	Enhance	Watershed District	Appendix B, Project Goal 6, Objective 2, Implementation Action 1	49011	T101 R22 S12	464	339200010
Upper Twin Water Level Control Station	To assist in drawdown of Upper Twin Lake to re-establish native vegetation and improve waterfowl habitat	\$ 397,500	Enhance	Watershed District	Appendix B, Project Goal 6, Objective 1, Implementation Action 1	49011	T101 R22 S02	213	49020010
Wedge Creek Reach #6 Wetland	Establishment of a wetland basin to improve waterfowl habitat	\$ 243,570	Enhance	TMDL	Page 46, Table 6-3, BMP FLWB-09, Water quality project near Wedge Creek outlets.	49013	T103 R22 S36	16	140360020
Wedge Creek Restoration Reach #6	Install BMP's for improvement of in stream spawning and over-wintering habitat of native fish species	\$ 450,800	Restore	TMDL	Page 46, Table 6-3, BMP FLWB-09, Water quality project near Wedge Creek outlets.	49013	T103 R22 S36	150	140360020
Wedge Creek Reach #1 Vegetative Restoration	Reestablish native vegetation to improve upland game and waterfowl nesting habitat	\$ 72,450	Enhance	Watershed District	Appendix E, Objective 2, Implementation Action 2	49013	T102 R21 S6	41	80060070
Pickerele Lake Site #12 Channel/Wetland Restoration	Establishment of a wetland basin to improve waterfowl habitat and Northern Pike spawning	\$ 40,250	Restore	Watershed District	Appendix B, Goal 2, Objective 3.1, Upper Watershed treatments to enhance and sustain improvements in the lake environment.	49016	T102 R22 S13	5	90505030
Targeted Habitat Acquisition; Owens Property	Protect and Reestablish native vegetation to improve upland game and waterfowl nesting habitat	\$ 400,000	Protect	Watershed District	Appendix B, Goal 2, Objective 3.2, Preservation and enhancement of shoreland and riparian zones around lakes and along water courses in the watershed.	49016	T102 R21 S30	40	80360020
Miller Tract - Wetland restoration	Establishment of a wetland basin to improve waterfowl habitat	\$ 201,250	Restore	Watershed District	Appendix B, Goal 2, Objective 3.1, Upper Watershed treatments to enhance and sustain improvements in the lake environment.	49014	T102 R23 S1	75	100010013
Targeted Habitat Acquisition; Mud Lake Property	Protect and Reestablish native vegetation to improve upland game and waterfowl nesting habitat	\$ 140,000	Protect	Watershed District	Appendix B, Goal 2, Objective 3.2, Preservation and enhancement of shoreland and riparian zones around lakes and along water courses in the watershed.	49016	T102 R22 S12	27	90120130
Targeted Habitat Acquisition; Schroeder Property	Protect and Reestablish native vegetation to improve upland game and waterfowl nesting habitat	\$ 280,000	Protect	Watershed District	Appendix B, Goal 2, Objective 3.2, Preservation and enhancement of shoreland and riparian zones around lakes and along water courses in the watershed.	49018	T101 R21 S33	23	30330040
School Section, Halls, and Sugar Lakes Fish Community Reclamation	Rotenone treatment of School Section Lake to kill the rough fish and reestablish native aquatic vegetation	\$ 67,725	Enhance	TMDL	6.0 Fountain Lake, Table 6-3, pg. 43, FLWB-20, description pg. 53	49013	T103 R22 S36	266	-
Targeted Habitat Acquisition; Orr Property	Protect and Reestablish native vegetation to improve upland game and waterfowl nesting habitat	\$ 666,750	Protect	Watershed District	Appendix B, Goal 2, Objective 3.2, Preservation and enhancement of shoreland and riparian zones around lakes and along water courses in the watershed.	49007	T102 R22 S06	80	90060013
Headwaters Stream Bank Habitat Restoration	Restoration of habitat along the headwater property to improve wildlife habitat	\$ 775,625	Restore	Watershed District	Appendix E, Goal 2, Objective 3. Implementation Action 2	49007	T102 R21 S25	25	80250021
Wedge Creek Wetland Restoration in T103 R22 S15 (Vandegrift)	Establishment of a wetland basin to improve waterfowl habitat	\$ 225,625	Restore	TMDL	6.0 Fountain Lake, Table 6-3, pg 44, FLWB-15 description pg. 51	49014	T103 R22 S15	35	140150100
Targeted Habitat Acquisition; Houg Property	Protect and Reestablish native vegetation to improve upland game and waterfowl nesting habitat	\$ 456,025	Protect	Watershed District	Appendix B, Goal 2, Objective 3.2, Preservation and enhancement of shoreland and riparian zones around lakes and along water courses in the watershed.	49009	T101 R20 S31	37	20310020
Shell Rock River Streambank Restoration	Restoration of habitat along the headwater property to improve wildlife habitat	\$ 615,000	Enhance	Watershed District	Appendix E, Goal 2, Objective 3. Implementation Action 2	49009	T101 R20 S31	15	29310030
Wedge Creek Wetland Restoration in T103 R22 S16 (Orr)	Establishment of a wetland basin to improve waterfowl habitat	\$ 371,250	Restore	TMDL	6.0 Fountain Lake, Table 6-3, pg 44, FLWB-14 description pg. 51	49014	T103 R22 S16	60	140160030
Fountain Lake In-Lake Habitat Restoration	Creation of in-lake and shoreline habitat structures for improved fisheries habitat	\$ 1,324,775	Restore	Watershed District	Appendix B, Goal 2, Objective 3. Habitat rehabilitation that focuses on implementation of both in lake and upper watershed projects	49003	T102 R21 S05	232	348120010
Targeted Habitat Acquisition; Chruch Lake Property	Permanently protect and provide access to Church Lake while improving the condition of habitat	\$ 609,000	Protect	Watershed District	Appendix B, Goal 2, Objective 3.2, Preservation and enhancement of shoreland and riparian zones around lakes and along water courses in the watershed.	49011	T102 R22 S26	80	90260050
Fountain Lake Pioneer Lakeshore Restoration	Restoration of habitat along Fountain Lake to improve fish spawning	\$ 137,225	Restore	Watershed District	Appendix E, Goal 2, Objective 3. Implementation Action 2	49003	T102 R21 S8	3	347290050
Targeted Habitat Acquisition; Shell Rock River Glenville Property	Restoration of habitat along streambank property to improve wildlife habitat	\$ 132,610	Protect	Watershed District	Appendix B, Goal 2, Objective 3.2, Preservation and enhancement of shoreland and riparian zones around lakes and along water courses in the watershed.	49007	T101 R20 S06	21	275000080
Targeted Habitat Acquisition; Bancroft Property	Protection and establishment of native vegetation and wetland basins for waterfowl and wildlife habitat	\$ 857,900	Protect	Watershed District	Appendix B, Goal 2, Objective 3.1, Upper Watershed treatments to enhance and sustain improvements in the lake environment.	49012	T103 R21 S21 & 16	112	130210030, 130160060
Bancroft Wetland Restoration	Establishment of a wetland basin to improve waterfowl habitat	\$ 365,000	Restore	Watershed District	Appendix E, Goal 2, Objective 2.2 Prioritize wetlands throughout the watershed	49012	T103 R21 S21 & 16	50	130210030, 130160060
Panicum Prairie Enhancement Project	Enhance native vegetation to improve waterfowl feeding and nesting habitat in a key targeted area	\$ 477,500	Enhance	Watershed District	Appendix B, Goal 7, Objective 4. Enhance water quality throughout the restoration of aquatic plants, wildlife habitat and fisheries	49011	T101 R21 S35	300	39350010
Targeted Habitat Acquisition: Pickerele Lake Property	Protect and Reestablish native vegetation to improve upland game and waterfowl nesting habitat	\$ 1,222,729	Protect	Watershed District	Appendix B, Goal 2, Objective 3.1, Upper Watershed treatments to enhance and sustain improvements in the lake environment.	49016	T102 R21 S17,18,19,20	189	80190090, 080170070, 080180250, 080200380
Pickerele Lake Upland Restoration	Protect and Reestablish native vegetation to improve upland game and waterfowl nesting habitat	\$ 183,000	Restore	Watershed District	Appendix B, Goal 2, Objective 3.1, Upper Watershed treatments to enhance and sustain improvements in the lake environment.	49016	T102 R21 S17, 19 & 20	82	080190090, 080200380, 080170070
Fountain Lake Shoreline Enhancement	Restoration of habitat along Fountain Lake to improve fish spawning	\$ 65,000	Enhance	Watershed District	Appendix E, Goal 2, Objective 3. Implementation Action 2	49012	T102 R21 S5	3	342720040
Targeted Habitat Acquisition: Church Lake Property	Permanently protect and provide access to Church Lake while improving the condition of habitat	\$ 70,400	Protect	Watershed District	Appendix B, Goal 2, Objective 3.2, Preservation and enhancement of shoreland and riparian zones around lakes and along water courses in the watershed.	49011	T102 R22 S23	22	90230080
Targeted Habitat Acquisition: Leach Property	Protect and Reestablish native vegetation to improve upland game and waterfowl nesting habitat	\$ 198,079	Protect	Watershed District	Appendix B, Goal 2, Objective 3. Habitat rehabilitation that focuses on implementation of both in lake and upper watershed projects	49008	T102 R21 S28	36	80280101
Bancroft Streambank Enhancement	Restoration of habitat along Bancroft Creek to improve wildlife habitat	\$ 788,200	Enhance	Watershed District	Appendix B, Goal 2, Objective 3.2, Preservation and enhancement of shoreland and riparian zones around lakes and along water courses in the watershed.	49012	T102 R21 S29 & 32	20	348550080, 348550110, 342940021
IC & E WPA Wetland Enhancement	Establishment of native vegetation and wetland basins for waterfowl and wildlife habitat	\$ 720,000	Enhance	Watershed District	Appendix B, Goal 2, Objective 3.1, Upper Watershed treatments to enhance and sustain improvements in the lake environment.	49014	T102 R22 S6; T103 R23 S1	171	90060020, 090060021, 100010013, 100010014
Leach Wetland Restoration	Establishment of a wetland basin to improve waterfowl habitat	\$ 281,545	Restore	Watershed District	Appendix E, Goal 2, Objective 2.2 Prioritize wetlands throughout the watershed	49008	T102 R21 S28	30	80280101

Color Coding for Project Phases:

Phase 4	ML 15, FY 16	Expires 18 & 20	Phase 5	ML 16, FY 17	Expires 19 & 21
Phase 6	ML 17, FY 18	Expires 20 & 22	Phase 7	ML 18, FY 19	Expires 21 & 23
Phase 8	ML 19, FY 20	Expires 22 & 24	Phase 9	ML 20, FY 21	Expires 23 & 25
Phase 10	ML 21, FY 22	Expires 24 & 26			