

Lessard-Sams Outdoor Heritage Council

Fiscal Year 2022 / ML 2021 Request for Funding



Date: May 28, 2020

Program or Project Title: Metro Big Rivers Phase 11 (HA02)

Funds Requested: \$13,273,500

Manager's Name: Deborah Loon

Organization: MN Valley Trust (Metro Big Rivers)

Address: 3815 East American Boulevard

City: Bloomington, MN 55425

Office Number: 612-801-1935

Mobile Number: 612-801-1935

Email: DLoon@mnvalleytrust.org

County Locations: Carver, Chisago, Dakota, Hennepin, Ramsey, Scott, Sibley, and Washington.

Eco regions in which work will take place:

- Metro / Urban

Activity types:

- Protect in Easement
- Restore
- Enhance
- Protect in Fee

Priority resources addressed by activity:

- Wetlands
- Forest
- Prairie
- Habitat

Abstract:

Metro Big Rivers Phase 11 will protect 835 acres in fee title and 928 acres in permanent conservation easement, restore 106 acres and enhance 453 acres of priority habitat in the big rivers corridors in the Metropolitan Urbanizing Area (2,322 acres total). The partnership will leverage the OHF grants by almost 20% with partner funds, private funds, local government contributions, and landowner donations of easement value. Significant volunteer engagement will be invested in habitat enhancement activities. Metro Big Rivers projects will benefit wildlife and species in greatest need of conservation (SGCN) and provide increased public access for wildlife-based recreation.

Design and scope of work:

Metro Big Rivers Phase 11 will protect, restore and enhance prioritized wildlife habitat in the MUA, with an emphasis on the Mississippi, Minnesota and St.Croix Rivers and their tributaries. By expanding, connecting and improving public conservation lands, Metro Big Rivers benefits wildlife and species in greatest need of conservation (SGCN) and provides increased public access for wildlife-based recreation. See brief descriptions below and attachments for detail.

Friends of the Mississippi River (FMR) will restore and enhance 90 acres at two sites. Projects include removal of invasive woody and herbaceous plants, planting climate-adapted shrub and tree species, seeding with diverse native species mixes, establishment mowing, spot-spraying, and prescribed burns.

- Katharine Ordway Natural History Study Area: Enhance 30 acres of degraded floodplain forest, 30 acres of oak woodland and 2 acres of prairie.

- Vermillion River Aquatic Management Area, Kamen Parcel: Restore 10 acres prairie, enhance 7 acres degraded riparian habitat on a trout stream and 11 acres lowland habitat.

Great River Greening (GRG) will restore 16 acres and enhance 373 acres across 11 sites. Projects will include removal of invasive woody and herbaceous species, mowing, spot spraying, seeding and planting.

- Creekside Park: Restore 5 acres riparian habitat along ¾ miles of Carver Creek, enhance 8 acres upland woodland.
- Lebanon Hills Regional Park Phase IV: Enhance 70 acres oak savanna/woodland and prairie.
- Valley Park Phase II: Enhance 15 acres oak woodland.
- Garlough & Marthaler Parks: Enhance 30 acres oak savanna and woodland.
- Bassett Creek Park: Restore 11 acres prairie, enhance 22 acres forest.
- Bass Lake Preserve: Enhance 11 acres forest.
- Wood-Rill SNA: Enhance 40 acres big woods.
- Hidden Falls Regional Park: Enhance 15 acres floodplain forest.
- Spring Lake Park (Scott County): Enhance 20 acres oak forest.
- Wind in the Pines Nature Preserve and Falls Creek SNA: Enhance 104 acres combined.
- Crystal Spring SNA: Enhance 38 acres forest.

Minnesota Land Trust (MLT) will protect through perpetual conservation easement 928 acres of priority habitat, including riparian lands, forests, wetlands and grasslands. Projects will be selected through a competitive process that ranks proposals based on ecological significance and cost (criteria attached).

MLT will restore/enhance 80 acres on lands protected through permanent conservation easement. Prioritized properties will be of high ecological significance, adjacent or close to public conservation investments and owned by landowners committed to conservation.

Minnesota Valley Trust (MVT) will protect in fee 665 acres of river frontage, floodplain forest, wetland and upland habitat in the Minnesota River Valley to expand the Minnesota Valley National Wildlife Refuge. All prospective lands have been prioritized by the USFWS and will be restored/enhanced, then open to the public for wildlife-based recreation, including hunting and fishing.

The Trust for Public Land (TPL) will protect in fee 170 acres of priority wildlife habitat, including riparian, forest, wetland and grassland habitat. Potential properties are prioritized in state, regional, and local natural resource plans. Lands will be managed by public partners (DNR and/or local units of government) and open to the public for wildlife-based recreation, including hunting and fishing.

How does the proposal address habitats that have significant value for wildlife species of greatest conservation need, and/or threatened or endangered species, and list targeted species:

Metro Big Rivers projects protect and improve habitats needed by wildlife species in greatest conservation need (SGCN) and other targeted species, and where they need them. Many of Minnesota's forest and grassland SGCNs are migratory. Improving habitat along the central flyway (the three big rivers) provides great benefits to all wildlife species, especially during critical migration periods.

Friends of the Mississippi River will enhance critical habitat two sites. The Katharine Ordway Natural History Study Area is next to the Mississippi River, an Audubon-designated Important Bird Area, and provides critical habitat for neotropical migrant birds. The property includes over 600 species of plants and animals, and 11 plant species unique to the county. The Vermillion River Aquatic Management Area is a designated trout stream, where fishing, trapping and hunting are permitted.

Great River Greening will also conduct significant habitat work on public conservation lands to improve habitat values for wildlife and SGCN, including birds using the Mississippi River migratory corridor and pollinators. Work will restore and enhance riverine, forest, oak savanna, prairie, and wetland habitat at 11 conservation sites.

Minnesota Land Trust will target its protection and restoration/enhancement action to priority privately owned lands to permanently protect high-quality upland and shoreland habitats from fragmentation, development, and other impacts that undermine the viability of SGCN and T&E species. Restoration and enhancement of habitat is proposed for lands already protected through easement.

Minnesota Valley Trust will acquire in fee lands identified through the USFWS Comprehensive Conservation Plan for the Minnesota Valley National Wildlife Refuge. This plan prioritizes lands for high biodiversity, connectivity, and ability to preserve habitat for SGCN.

The Trust for Public Land will acquire lands in fee identified and prioritized in state, regional, and local natural resource plans due to their high biodiversity significance, connectivity to existing public lands, and ability to preserve habitat for SGCN. Acquisitions and subsequent habitat work increase breeding and migratory habitat for waterfowl, shorebirds, neo-tropical migrants, and non-migratory resident species, protect the diversity of native ecosystems, and improve connectivity and resilience.

What is the degree of timing/opportunistic urgency and why it is necessary to spend public money for

this work as soon as possible:

The three major rivers, which converge in the Metro Urbanizing Area (MUA), are of significant importance to a myriad of migrating species and SGCN. Three intersecting issues create urgency for Metro Big Rivers Partnerships' work in the MUA -- 1) the continued decline of many wildlife species, most notably, birds and pollinators, 2) declining habitat these species need to rebound and thrive, and 3) rising land values and development activity.

Protecting and enhancing habitat in the MUA is especially critical now, as land values and housing developments are both rising, placing renewed demand on lands throughout the area. Metro Big Rivers projects will defend against rising land values (especially along lakes and rivers), add needed and significant wildlife habitat, improve connectivity and habitat values (especially for wildlife and SGCN) and increase needed public access to wildlife-based outdoor opportunities in metro area, including hunting and fishing.

Describe how the proposal uses science-based targeting that leverages or expands corridors and complexes, reduces fragmentation or protects areas identified in the MN County Biological Survey:

Protection partners prioritize work through science-based processes led by the public entities that own or will own interest in the properties (e.g., MN DNR, USFWS). Plans followed include MBS, RESA, Metropolitan Conservation Corridors, Minnesota State Wildlife Action Plan, and the Comprehensive Conservation Plan for the Minnesota Valley National Wildlife Refuge. Actions are targeted toward building conservation corridors and priority habitat complexes.

In addition, the easement partner's competitive RFP process includes a second analysis of all proposed projects submitted by landowners for protection. This assessment evaluates the ecological significance of the proposed parcel, which includes the following three factors:

- Quantity – the size of habitat and/or length of shoreline associated with a parcel, and abundance of Species in Greatest Conservation Need (SGCN) and Threatened & Endangered (T&E) species
- Quality – the condition of the associated habitat and populations of SGCN and T&E species
- Landscape Context – the extent and condition of natural habitat surrounding the parcel, and the degree to which adjacent property has been protected.

Restoration and enhancement partners use science-based criteria to prioritize activities. This includes consideration of the highest quality natural areas (as determined by MBS), as well as prioritization of work within important ecological corridors identified by a coalition of conservation partners and based on rare species and sensitive landscape features. This prioritization ensures that projects reduce fragmentation and link natural areas within already-established corridors. All of the restoration and enhancement sites are located along or near the three big rivers and important tributaries - some of the most important ecological corridors for migrating and sedentary plant and animal life.

Which sections of the Minnesota Statewide Conservation and Preservation Plan are applicable to this project:

- H1 Protect priority land habitats
- H5 Restore land, wetlands and wetland-associated watersheds

Which other plans are addressed in this proposal:

- Minnesota's Wildlife Action Plan 2015-2025
- Outdoor Heritage Fund: A 25 Year Framework

Describe how your program will advance the indicators identified in the plans selected:

Metro Big Rivers Partnership (MBR) effectively targets action toward protecting, restoring and enhancing the long-term viability of the MUA's essential natural terrestrial and aquatic habitats and their associated wildlife, along and in close proximity to the Minnesota, Mississippi and St. Croix Rivers and their tributaries.

MBR advances the LSOHC 25 Year Strategic Framework for the MUA by creating a network of natural lands that provide healthy core areas of diverse natural communities, corridors for wildlife, and complexes of perpetually-protected and restored lands. MBR addresses all 11 of the LSOHC priority statewide criteria and all 4 of its priority criteria for the MUA.

MBR also advances the indicators of Minnesota's Wildlife Action Plan by ensuring the long-term health and viability of Minnesota's wildlife, maintaining and enhancing the resilience of habitats on which SGCN depend, within the Wildlife Action Network and associated Conservation Focus Areas of the MUA.

Which LSOHC section priorities are addressed in this proposal:

Metro / Urban:

- Protect habitat corridors, with emphasis on the Minnesota, Mississippi, and St. Croix rivers (bluff to floodplain)

Describe how your program will produce and demonstrate a significant and permanent conservation legacy and/or outcomes for fish, game, and wildlife as indicated in the LSOHC priorities:

Metro Big Rivers focuses on habitat within the three big river corridors and their tributaries within the Metropolitan Urbanizing Area (MUA). We are building, expanding, connecting and restoring complexes and corridors of protected habitat that include wetlands, prairies, forests and aquatic habitat. Opportunities are prioritized for the potential to contribute to building a permanent conservation legacy that includes outcomes for wildlife and the public. They supplement and expand on other conservation activities the partners are conducting in the MUA.

MBR works in partnership with local, state and federal agency partners and with willing, conservation-minded landowners. High-quality lands are protected through fee title or easement acquisition. Lands that are already under public protection but in a degraded state are targeted for restoration and enhancement, as are lands protected through MBR fee and easement acquisitions. Where possible, protected and restored lands are made available to the public for outdoor recreation, including hunting and fishing, thereby addressing the need to provide such opportunities close to home to a growing and diversifying urban population.

MBR Phase 11 includes a diversity of projects that will significantly expand and improve the conservation legacy in the MUA. MBR 11 projects will protect, restore and enhance prairie, oak savanna, forest, wetland, grassland and shoreline habitat, all within the MUA.

Relationship to other funds:

- Not Listed

Describe the relationship of the funds:

Not Listed

Does this program include leverage in funds:

Yes

Metro Big Rivers 11 will leverage the OHF appropriation with an estimated \$2,603,400 in other funds (almost 20%). The partnership has secured commitments of supplemental funding from the partners, private sources, local government units, watershed districts / management organizations and park districts.

MLT encourages private landowners to fully or partially donate the appraised value of their conservation easement. This donated value is shown as leveraged funds in the proposal. MLT has a long track record gaining landowner participation in this fashion. To date across all MBR grants, \$2,885,500 in easement value has been donated by landowners as leverage. MLT expects a significant landowner contribution to continue in MBR Phase 11; a conservative estimate of leverage is \$1,500,000.

Crews of volunteers will add significant in-kind value to the restoration / enhancement projects. This value is not included in the leverage funds, but is important to note here. Volunteers effectively replace or enhance paid crews and contracts on many projects, saving funds. Use of volunteers also effectively educates and engages the community in conservation work, which is critical for the future of conservation.

Per MS 97A.056, Subd. 24, Any state agency or organization requesting a direct appropriation from the OHF must inform the LSOHC at the time of the request for funding is made, whether the request is supplanting or is a substitution for any previous funding that was not from a legacy fund and was used for the same purpose:

This request is not supplanting or substituting for any previous funding that was not from a legacy fund and was used for the same purpose.

Describe the source and amount of non-OHF money spent for this work in the past:

Appropriation Year	Source	Amount
2009	Other State	741,058
2012	Other State	684,449
2012	Local & Federal	413,561
2012	Private & Other	2,063,388
2013	Other State	2,130,284
2013	Local & Federal	1,320,606
2013	Private	1,253,038
2014	Other State	1,873,857
2014	Local	516,119
2014	Private	1,931,527
2015	Other State	2,224,751
2009	Local & Federal	230,310
2015	Local	1,295,000
2015	Private	1,449,198
2016	Other State	912,867
2016	Local & Federal	1,822,000
2016	Private	2,700,091
2017	Other State	630,060
2017	Local	739,800
2017	Private & Other	1,278,433
2018	Other State	656,593
2018	Local	253,321
2009	Private	940,884
2018	Private	2,025,433
2019	Other State	381,241
2019	Local	418,524
2019	Private & Other	636,255
2010	Other State	2,010,658
2010	Local & Federal	485,122
2010	Private	3,516,521
2011	Other State	1,429,358
2011	Local & Federal	543,900
2011	Private	1,578,572

How will you sustain and/or maintain this work after the Outdoor Heritage Funds are expended:

All public partners have committed to maintaining the restoration / enhancement habitat improvements.

All MBR restore/enhance (FMR, GRG, MLT) partners will raise public and private sources and work cooperatively with partners to ensure the project benefits are maintained.

Lands protected through easement by MLT will be sustained following best standards and practices. MLT is a nationally-accredited and insured land trust with a successful stewardship program that includes annual property monitoring, records management, addressing inquiries, tracking ownership changes, investigating potential violations and defending the easement in case of a true violation. MLT provides habitat management plans to landowners and helps them access resources and technical expertise to undertake restoration, enhancement and ongoing management.

Lands acquired in fee title by MVT for the Minnesota Valley National Wildlife Refuge will be sustained and maintained over the long-term by the USFWS. Habitat restoration / enhancement will be completed by MVT prior to transfer to the USFWS.

Lands acquired in fee title by TPL will be conveyed to the DNR or local units of government for permanent stewardship. Initial site development and restoration costs are included in this proposal. TPL will work with the steward to develop habitat plans.

Explain the things you will do in the future to maintain project outcomes:

Year	Source of Funds	Step 1	Step 2	Step 3
Ongoing	FMR, GRG, MLT, Local Partners, Private Landowners	Monitoring and assessment of restoration and enhancement projects	Target actions, engage local partners and landowners	Take restorative action to correct any damage
Ongoing	MLT Stewardship & Enforcement Fund	Annual monitoring of completed easements	Enforcement actions as necessary	
Post-Acquisition, Ongoing	MVT, TPL, Public Partners	Post acquired property	Develop & implement habitat restoration and enhancement plans	Transfer property to public partner, steward

Identify indicator species and associated quantities this habitat will typically support:

DNR staff, in consultation with experts in NGOs and other agencies, compiled a select group of indicator species and associated quantities to be used to answer the question above. The metrics are derived from existing data sources and/or scientific literature but are necessarily gross averages; they are not accurate at a site-specific scale. They are not intended to be used to score or rank requests but represent the best information we have for immediate support to the Council's objective. We select a few, not fully inclusive indicators here.

Forests.

Indicator: White-tailed deer.

White-tailed deer use a wide variety of forested habitats throughout Minnesota. Deer densities in the Metropolitan Area will be higher than the six-year average (2010-2015) density of 0.02 deer (pre-fawning) per acre of forest habitat in the LSOHC Northern Forest section.

Grasslands/Prairie.

Indicator: Bobolink and Grasshopper Sparrow.

The breeding territory size of bobolinks and grasshopper sparrows is 1.7 and 2.1 acres respectively in high quality habitat in Wisconsin. If all habitat is occupied, 100 acres could hold approximately 60 and 48 pairs of bobolinks and grasshopper sparrows respectively.

Wetlands.

Indicator: Mallards.

A Joint Venture biological model used to estimate habitat needs uses an accepted rate of 1 mallard pair per 2.47 acres of wetland habitat (noting that upland nesting habitat is also needed).

Trout Streams.

Indicator: Brook Trout.

Available DNR data and published reports suggest an abundance of 100 lbs/acre of brook trout for southeast Minnesota.

Activity Details

Requirements:

If funded, this proposal will meet all applicable criteria set forth in MS 97A.056 - **Yes**

Will county board or other local government approval be formally sought prior to acquisition, per 97A.056 subd 13(j) - **No**

Local units of government will be notified of pending fee title acquisitions, as required by law.

Is the land you plan to acquire (fee title) free of any other permanent protection - **Yes**

Is the land you plan to acquire (easement) free of any other permanent protection - **Yes**

Will restoration and enhancement work follow best management practices including MS 84.973 Pollinator Habitat Program - **Yes**

Is the restoration and enhancement activity on permanently protected land per 97A.056, subd 13(f), tribal lands, and/or public waters per MS 103G.005, Subd. 15 - **Yes (SNA, AMA, Permanently Protected Conservation Easements County/Municipal)**

Do you anticipate federal funds as a match for this program - **No**

Land Use:

Will there be planting of corn or any crop on OHF land purchased or restored in this program - **Yes**

Explain

Easement Acquisition:

The purpose of the Minnesota Land Trust's conservation easements is to protect existing high-quality natural habitat and to preserve opportunities for future restoration. As such, we restrict any agricultural lands and use on the properties. In cases in which there are agricultural lands associated with the larger property, we will either carve the agricultural area out of the conservation easement, or in some limited cases, we may include a small percentage of agricultural lands if it is not feasible to carve those areas out. In such cases, however, we will not use OHF funds to pay the landowners for that portion of the conservation easement.

Restoration/Enhancement:

Short-term use of agricultural crops is an accepted best practice for preparing a site for prairie restoration. For example, short-term use of soybeans could be used for restorations in order to control weed seedbeds prior to prairie planting. In some cases this necessitates the use of GMO treated products to facilitate herbicide use in order to control weeds present in the seedbank.

Is this land currently open for hunting and fishing - **No**

Will the land be open for hunting and fishing after completion - **Yes**

Lands acquired for the Minnesota Valley National Wildlife Refuge will be open for public hunting and fishing according to the National Wildlife Refuge Improvement Act. The lands will be opened through a public process prescribed by the Act. We anticipate hunting and fishing opportunities will be like those already established for lands previously acquired for the Refuge. For specific information, refer to the Refuge's website - http://www.fws.gov/midwest/MinnesotaValley/documents/hunting_regs.pdf.

Lands acquired by The Trust for Public Land will be open for fishing and hunting.

Will the eased land be open for public use - **No**

Are there currently trails or roads on any of the acquisitions on the parcel list - **Yes**

Describe the types of trails or roads and the allowable uses:

We are not aware of any trails or roads at this time, although some parcels acquired in fee title may have existing field roads or low maintenance trails. Properties identified and prioritized for protection through conservation easements often have trails and roads on them; private landowners typically will be allowed to use those trails/roads on their property.

Will the trails or roads remain and uses continue to be allowed after OHF acquisition - **Yes**

How will maintenance and monitoring be accomplished:

Trails and roads on eased lands are identified in the project baseline report and will be monitored annually as part of MLT's stewardship and enforcement protocols. Maintenance of permitted roads or trails in line with the easement terms will be the responsibility of the landowner.

Any pre-existing low-maintenance roads and trails on properties acquired for the MN Valley National Wildlife Refuge (USFWS) may be continued under a plan developed for the purpose of property access for habitat maintenance and public use of the property for wildlife-dependent recreation (e.g., hunting and fishing).

TPL is not aware of any trails or roads on any of the acquisitions. If any are discovered on lands to be managed by the DNR, they will be managed per DNR policy for WMAs, AMAs, SNAs or State Forests. If they are discovered on lands to be managed by local units of government, they will be managed per a maintenance and monitoring plan developed in consultation with LSOHC staff.

Will new trails or roads be developed or improved as a result of the OHF acquisition - **No**

Will the land that you acquire (fee or easement) be restored or enhanced within this proposals funding and availability? - **No**

Explain how, when, and source of the R/E work:

Restoration and enhancement needs associated with fee title and easement projects completed under this grant will be assessed. Needs identified will be addressed through private sources, Conservation Partners Legacy Grant proposals and/or future funding proposals to LSOHC. If funds remain in this grant, an amendment may be submitted to allow those funds to be reallocated to restoration and enhancement on lands protected by this grant.

For the restoration / enhancement on eased lands, MLT restoration personnel will conduct outreach with easement landowners to evaluate, scope, design and schedule additional restoration projects. These activities will improve the project selection, cost-estimates and outcomes for future OHF funding requests.

Land Use:

Have you received OHF dollars in the past through LSOHC? - Yes

Past appropriations and spending to date:

Apprp Year	Approp Amount Received	Approp Amount Spent to Date	Leverage as Reported in AP/th>	Leverage Realized to Date	Total Acres Affected in AP	Total Acres Affected to Date	Program Complete and Final Report Approved?
2010	2397000	2395400	2066000	2876400	407	807	Yes
2011	5000000	4837200	1517800	1504700	917	1688	Yes
2012	3680000	1345800	726000	27500	753	569	Yes
2013	1720000	817000	338000	800400	407	261	Yes
2014	2650000	1210600	357000	1343100	619	309	Yes
2015	2000000	1808600	452900	1051300	815	1121	No
2016	4000000	3405400	693100	1068000	1057	1138	No
2018	2630000	783400	1112700	590800	930	349	No
2019	4163000	0	664100	0	831	0	No
2020	6473000	0	777100	0	1110	0	No

Accomplishment Timeline

Activity	Approximate Date Completed
FMR - Restore 10 acres and enhance 80 acres	June 2026
GRG - Restore 15 acres and enhance 381 acres	June 2026
MLT - Restore and/or enhance 80 acres	June 2026
MLT - Protect 928 acres under conservation easement	June 2025
MVT - Protect 665 acres through fee title acquisition	June 2025
TPL - Protect 170 acres through fee title acquisition	June 2025

Budget Spreadsheet

Total Amount of Request: \$13,273,500

Budget and Cash Leverage

BudgetName	LSOHC Request	Anticipated Leverage	Leverage Source	Total
Personnel	\$940,300	\$185,500	Carver, Crystal, Mendota Heights, Scandia, St. Louis Park, West St. Paul, Friends of Scandia Parks, Dakota County, Scott County	\$1,125,800
Contracts	\$1,579,700	\$15,800	MN DNR,, Macalester College, Volunteers	\$1,595,500
Fee Acquisition w/ PILT	\$2,000,000	\$100,000	RIM	\$2,100,000
Fee Acquisition w/o PILT	\$2,000,000	\$500,000	MN Valley Trust	\$2,500,000
Easement Acquisition	\$5,000,000	\$1,500,000	Private landowners	\$6,500,000
Easement Stewardship	\$432,000	\$0		\$432,000
Travel	\$29,000	\$2,000	Private	\$31,000
Professional Services	\$646,000	\$0		\$646,000
Direct Support Services	\$299,500	\$296,500	Private, Great River Greening	\$596,000
DNR Land Acquisition Costs	\$37,000	\$0		\$37,000
Capital Equipment	\$0	\$0		\$0
Other Equipment/Tools	\$25,800	\$0		\$25,800
Supplies/Materials	\$224,200	\$3,600	MN DNR, Carver, Crystal	\$227,800
DNR IDP	\$60,000	\$0		\$60,000
Total	\$13,273,500	\$2,603,400		-\$15,876,900

Personnel

Position	FTE	Over # of years	LSOHC Request	Anticipated Leverage	Leverage Source	Total
TPL Staff (protection, legal)	0.44	3.00	\$212,000	\$0		\$212,000
FMR Staff (ecologists, conservation director, stewardship staff, bookkeeper, interns)	0.37	4.00	\$26,600	\$0		\$26,600
MLT Protection Staff	0.70	4.00	\$266,000	\$0		\$266,000
MLT Restoration Staff	0.50	4.00	\$190,000	\$0		\$190,000
GRG Staff (ecologists, technicians)	0.75	5.00	\$245,700	\$185,500	Carver, Crystal, Mendota Heights, Scandia, St. Louis Park, West St. Paul, Friends of Scandia Parks, Dakota County, Scott County	\$431,200
Total	2.76	20.00	\$940,300	\$185,500		-\$1,125,800

Budget and Cash Leverage by Partnership

BudgetName	Partnership	LSOHC Request	Anticipated Leverage	Leverage Source	Total
Personnel	Trust for Public Land (TPL)	\$212,000	\$0		\$212,000
Contracts	Trust for Public Land (TPL)	\$75,000	\$0		\$75,000
Fee Acquisition w/ PILT	Trust for Public Land (TPL)	\$2,000,000	\$100,000	RIM	\$2,100,000
Fee Acquisition w/o PILT	Trust for Public Land (TPL)	\$0	\$0		\$0
Easement Acquisition	Trust for Public Land (TPL)	\$0	\$0		\$0
Easement Stewardship	Trust for Public Land (TPL)	\$0	\$0		\$0
Travel	Trust for Public Land (TPL)	\$0	\$2,000	Private	\$2,000
Professional Services	Trust for Public Land (TPL)	\$90,000	\$0		\$90,000
Direct Support Services	Trust for Public Land (TPL)	\$67,500	\$67,500	Private	\$135,000
DNR Land Acquisition Costs	Trust for Public Land (TPL)	\$30,000	\$0		\$30,000
Capital Equipment	Trust for Public Land (TPL)	\$0	\$0		\$0
Other Equipment/Tools	Trust for Public Land (TPL)	\$0	\$0		\$0
Supplies/Materials	Trust for Public Land (TPL)	\$0	\$0		\$0
DNR IDP	Trust for Public Land (TPL)	\$60,000	\$0		\$60,000

Total	-	\$2,534,500	\$169,500	-	\$2,704,000
-------	---	-------------	-----------	---	-------------

Personnel - Trust for Public Land (TPL)

Position	FTE	Over # of years	LSOHC Request	Anticipated Leverage	Leverage Source	Total
TPL Staff (protection, legal)	0.44	3.00	\$212,000	\$0		\$212,000
Total	0.44	3.00	\$212,000	\$0		\$212,000

Budget Name	Partnership	LSOHC Request	Anticipated Leverage	Leverage Source	Total
Personnel	Friends of Mississippi River (FMR)	\$26,600	\$0		\$26,600
Contracts	Friends of Mississippi River (FMR)	\$197,300	\$15,800	MN DNR., Macalester College, Volunteers	\$213,100
Fee Acquisition w/ PILT	Friends of Mississippi River (FMR)	\$0	\$0		\$0
Fee Acquisition w/o PILT	Friends of Mississippi River (FMR)	\$0	\$0		\$0
Easement Acquisition	Friends of Mississippi River (FMR)	\$0	\$0		\$0
Easement Stewardship	Friends of Mississippi River (FMR)	\$0	\$0		\$0
Travel	Friends of Mississippi River (FMR)	\$2,100	\$0		\$2,100
Professional Services	Friends of Mississippi River (FMR)	\$0	\$0		\$0
Direct Support Services	Friends of Mississippi River (FMR)	\$0	\$0		\$0
DNR Land Acquisition Costs	Friends of Mississippi River (FMR)	\$0	\$0		\$0
Capital Equipment	Friends of Mississippi River (FMR)	\$0	\$0		\$0
Other Equipment/Tools	Friends of Mississippi River (FMR)	\$0	\$0		\$0
Supplies/Materials	Friends of Mississippi River (FMR)	\$25,200	\$600	MN DNR	\$25,800
DNR IDP	Friends of Mississippi River (FMR)	\$0	\$0		\$0
Total		\$251,200	\$16,400		\$267,600

Personnel - Friends of Mississippi River (FMR)

Position	FTE	Over # of years	LSOHC Request	Anticipated Leverage	Leverage Source	Total
FMR Staff (ecologists, conservation director, stewardship staff, bookkeeper, interns)	0.37	4.00	\$26,600	\$0		\$26,600
Total	0.37	4.00	\$26,600	\$0		\$26,600

Budget Name	Partnership	LSOHC Request	Anticipated Leverage	Leverage Source	Total
Personnel	Minnesota Land Trust (MLT)	\$456,000	\$0		\$456,000
Contracts	Minnesota Land Trust (MLT)	\$313,000	\$0		\$313,000
Fee Acquisition w/ PILT	Minnesota Land Trust (MLT)	\$0	\$0		\$0
Fee Acquisition w/o PILT	Minnesota Land Trust (MLT)	\$0	\$0		\$0
Easement Acquisition	Minnesota Land Trust (MLT)	\$5,000,000	\$1,500,000	Private landowners	\$6,500,000
Easement Stewardship	Minnesota Land Trust (MLT)	\$432,000	\$0		\$432,000
Travel	Minnesota Land Trust (MLT)	\$17,000	\$0		\$17,000
Professional Services	Minnesota Land Trust (MLT)	\$481,000	\$0		\$481,000
Direct Support Services	Minnesota Land Trust (MLT)	\$124,000	\$0		\$124,000
DNR Land Acquisition Costs	Minnesota Land Trust (MLT)	\$0	\$0		\$0
Capital Equipment	Minnesota Land Trust (MLT)	\$0	\$0		\$0
Other Equipment/Tools	Minnesota Land Trust (MLT)	\$12,000	\$0		\$12,000
Supplies/Materials	Minnesota Land Trust (MLT)	\$5,000	\$0		\$5,000
DNR IDP	Minnesota Land Trust (MLT)	\$0	\$0		\$0
Total		\$6,840,000	\$1,500,000		\$8,340,000

Personnel - Minnesota Land Trust (MLT)

Position	FTE	Over # of years	LSOHC Request	Anticipated Leverage	Leverage Source	Total
MLT Protection Staff	0.70	4.00	\$266,000	\$0		\$266,000
MLT Restoration Staff	0.50	4.00	\$190,000	\$0		\$190,000
Total	1.20	8.00	\$456,000	\$0		\$456,000

Budget Name	Partnership	LSOHC Request	Anticipated Leverage	Leverage Source	Total
Personnel	Great River Greening	\$245,700	\$185,500	Carver, Crystal, Mendota Heights, Scandia, St. Louis Park, West St. Paul, Friends of Scandia Parks, Dakota County, Scott County	\$431,200

Contracts	Great River Greening	\$994,400	\$0		\$994,400
Fee Acquisition w/ PILT	Great River Greening	\$0	\$0		\$0
Fee Acquisition w/o PILT	Great River Greening	\$0	\$0		\$0
Easement Acquisition	Great River Greening	\$0	\$0		\$0
Easement Stewardship	Great River Greening	\$0	\$0		\$0
Travel	Great River Greening	\$9,900	\$0		\$9,900
Professional Services	Great River Greening	\$75,000	\$0		\$75,000
Direct Support Services	Great River Greening	\$108,000	\$229,000	Great River Greening	\$337,000
DNR Land Acquisition Costs	Great River Greening	\$0	\$0		\$0
Capital Equipment	Great River Greening	\$0	\$0		\$0
Other Equipment/Tools	Great River Greening	\$13,800	\$0		\$13,800
Supplies/Materials	Great River Greening	\$194,000	\$3,000	Carver, Crystal	\$197,000
DNR IDP	Great River Greening	\$0	\$0		\$0
Total		-\$1,640,800	\$417,500		-\$2,058,300

Personnel - Great River Greening

Position	FTE	Over # of years	LSOHC Request	Anticipated Leverage	Leverage Source	Total
GRG Staff (ecologists, technicians)	0.75	5.00	\$245,700	\$185,500	Carver, Crystal, Mendota Heights, Scandia, St. Louis Park, West St. Paul, Friends of Scandia Parks, Dakota County, Scott County	\$431,200
Total	0.75	5.00	\$245,700	\$185,500		-\$431,200

BudgetName	Partnership	LSOHC Request	Anticipated Leverage	Leverage Source	Total
Personnel	Minnesota Valley National Wildlife Refuge Trust (MVT)	\$0	\$0		\$0
Contracts	Minnesota Valley National Wildlife Refuge Trust (MVT)	\$0	\$0		\$0
Fee Acquisition w/ PILT	Minnesota Valley National Wildlife Refuge Trust (MVT)	\$0	\$0		\$0
Fee Acquisition w/o PILT	Minnesota Valley National Wildlife Refuge Trust (MVT)	\$2,000,000	\$500,000	MN Valley Trust	\$2,500,000
Easement Acquisition	Minnesota Valley National Wildlife Refuge Trust (MVT)	\$0	\$0		\$0
Easement Stewardship	Minnesota Valley National Wildlife Refuge Trust (MVT)	\$0	\$0		\$0
Travel	Minnesota Valley National Wildlife Refuge Trust (MVT)	\$0	\$0		\$0
Professional Services	Minnesota Valley National Wildlife Refuge Trust (MVT)	\$0	\$0		\$0
Direct Support Services	Minnesota Valley National Wildlife Refuge Trust (MVT)	\$0	\$0		\$0
DNR Land Acquisition Costs	Minnesota Valley National Wildlife Refuge Trust (MVT)	\$7,000	\$0		\$7,000
Capital Equipment	Minnesota Valley National Wildlife Refuge Trust (MVT)	\$0	\$0		\$0
Other Equipment/Tools	Minnesota Valley National Wildlife Refuge Trust (MVT)	\$0	\$0		\$0
Supplies/Materials	Minnesota Valley National Wildlife Refuge Trust (MVT)	\$0	\$0		\$0
DNR IDP	Minnesota Valley National Wildlife Refuge Trust (MVT)	\$0	\$0		\$0
Total		-\$2,007,000	\$500,000		-\$2,507,000

Amount of Request: \$13,273,500
Amount of Leverage: \$2,603,400
Leverage as a percent of the Request: 19.61%
DSS + Personnel: \$1,239,800
As a % of the total request: 9.34%
Easement Stewardship: \$432,000
As a % of the Easement Acquisition: 8.64%

How did you determine which portions of the Direct Support Services of your shared support services is direct to this program:

GRG - DSS rate has been approved by the DNR in September 2019, GRG's DSS rate includes the allowable direct and necessary expenditures that are not captured in other line items in the budget. A portion, not exceeding 50%, of these costs are requested from the grant and the balance is contributed as leverage.

MLT - In a process approved by the DNR on March 17, 2017, MLT's DSS rate includes the allowable direct and necessary expenditures that are not captured in other line items in the budget. This is similar to the MLT's proposed federal indirect rate. MLT will apply this DNR-approved rate only to personnel expenses.

TPL - DSS rate is based upon our federal rate which has been approved by the DNR. 50% of these costs are requested from the grant, 50% is contributed as leverage.

FMR and MVT are not requesting DSS.

What is included in the contracts line?

FMR, GRG, MLT - Restoration / enhancement contracts with service providers.

MLT - Habitat management plan preparation, landowner outreach by county SWCD offices.

TPL - Potential site clean-up and initial restoration activities.

Does the amount in the travel line include equipment/vehicle rental? - Yes

Explain the amount in the travel line outside of traditional travel costs of mileage, food, and lodging:

NA

I understand and agree that lodging, meals, and mileage must comply with the current MMB Commissioner Plan: - Yes

Describe and explain leverage source and confirmation of funds:

Leverage includes committed and anticipated funds from the Metro Big Rivers partners, numerous cities (Carver, Crystal, Mendota Heights Scandia, St. Louis Park and West St. Paul), Dakota and Scott Counties, Macalester College, Minnesota Department of Natural Resources, Minnesota RIM, private landowners and other private donors.

Does this proposal have the ability to be scalable? - Yes

Tell us how this project would be scaled and how administrative costs are affected, describe the "economy of scale" and how outputs would change with reduced funding, if applicable:

Because MBR protects, enhances and restores multiple parcels, it is scalable. Less funding will result in fewer acres protected, restored and enhanced, and thus missed opportunities. Some of the administrative and outreach costs are more fixed; lower funding also reduces the economies of scale.

What is the cost per easement for stewardship and explain how that amount is calculated?

The average cost per easement to perpetually fund the Minnesota Land Trust's long-term monitoring and enforcement obligations is \$24,000. This figure has been determined by using a detailed stewardship funding calculator or "cost analysis" which is the industry standard according to the Land Trust Accreditation process. This cost analysis examines seventeen different categories of future annual expenditures related to the management of the easement and then calculates what the Land Trust needs in one-time funding to cover these various expenditures in perpetuity. In addition, the Land Trust seeks private contributions whenever possible to further leverage these state funds. The Minnesota Land Trust reviews and updates this cost-analysis periodically to ensure that the organization will have the capacity to fulfill its ongoing obligations. This cost-analysis is on file with the Lessard-Sams Outdoor Heritage Council staff and the Land Trust shares a new version with the Council whenever updates are made.

Has funding for these positions been requested in the past? - Yes

Please explain the overlap of past and future staffing and position levels previously received and how that is coordinated over multiple years?

FTEs listed in the proposal are an estimate of the personnel time required to deliver the grant outputs included in this proposal. Our basis for billing is the individual projects we work on, ensuring allocation to the appropriate grant award. By using a timesheet-based approach, we use only those personnel funds actually expended to achieve the goals of the grant.

What is the anticipated number of fee title acquisition transactions?

3 to 6

Output Tables

Table 1a. Acres by Resource Type

Type	Wetlands	Prairies	Forest	Habitats	Total
Restore	0	21	5	80	106
Protect in Fee with State PILT Liability	50	50	50	20	170
Protect in Fee W/O State PILT Liability	200	200	265	0	665
Protect in Easement	0	0	0	928	928
Enhance	11	33	409	0	453
Total	261	304	729	1,028	2,322

Table 1b. How many of these Prairie acres are Native Prairie?

Type	Native Prairie
Restore	0
Protect in Fee with State PILT Liability	0
Protect in Fee W/O State PILT Liability	1
Protect in Easement	0
Enhance	0
Total	1

Table 2. Total Requested Funding by Resource Type

Type	Wetlands	Prairies	Forest	Habitats	Total
Restore	\$0	\$102,400	\$178,500	\$444,000	\$724,900
Protect in Fee with State PILT Liability	\$745,000	\$745,000	\$745,000	\$299,500	\$2,534,500
Protect in Fee W/O State PILT Liability	\$600,000	\$607,000	\$800,000	\$0	\$2,007,000
Protect in Easement	\$0	\$0	\$0	\$6,396,000	\$6,396,000
Enhance	\$14,000	\$214,000	\$1,383,100	\$0	\$1,611,100
Total	\$1,359,000	\$1,668,400	\$3,106,600	\$7,139,500	\$13,273,500

Table 3. Acres within each Ecological Section

Type	Metro/Urban	Forest/Prairie	SE Forest	Prairie	Northern Forest	Total
Restore	106	0	0	0	0	106
Protect in Fee with State PILT Liability	170	0	0	0	0	170
Protect in Fee W/O State PILT Liability	665	0	0	0	0	665
Protect in Easement	928	0	0	0	0	928
Enhance	453	0	0	0	0	453
Total	2,322	0	0	0	0	2,322

Table 4. Total Requested Funding within each Ecological Section

Type	Metro/Urban	Forest/Prairie	SE Forest	Prairie	Northern Forest	Total
Restore	\$724,900	\$0	\$0	\$0	\$0	\$724,900
Protect in Fee with State PILT Liability	\$2,534,500	\$0	\$0	\$0	\$0	\$2,534,500
Protect in Fee W/O State PILT Liability	\$2,007,000	\$0	\$0	\$0	\$0	\$2,007,000
Protect in Easement	\$6,396,000	\$0	\$0	\$0	\$0	\$6,396,000
Enhance	\$1,611,100	\$0	\$0	\$0	\$0	\$1,611,100
Total	\$13,273,500	\$0	\$0	\$0	\$0	\$13,273,500

Table 5. Average Cost per Acre by Resource Type

Type	Wetlands	Prairies	Forest	Habitats
Restore	\$0	\$4,876	\$35,700	\$5,550
Protect in Fee with State PILT Liability	\$14,900	\$14,900	\$14,900	\$14,975
Protect in Fee W/O State PILT Liability	\$3,000	\$3,035	\$3,019	\$0
Protect in Easement	\$0	\$0	\$0	\$6,892
Enhance	\$1,273	\$6,485	\$3,382	\$0

Table 6. Average Cost per Acre by Ecological Section

Type	Metro/Urban	Forest/Prairie	SE Forest	Prairie	Northern Forest
Restore	\$6,839	\$0	\$0	\$0	\$0
Protect in Fee with State PILT Liability	\$14,909	\$0	\$0	\$0	\$0
Protect in Fee W/O State PILT Liability	\$3,018	\$0	\$0	\$0	\$0
Protect in Easement	\$6,892	\$0	\$0	\$0	\$0
Enhance	\$3,557	\$0	\$0	\$0	\$0

Automatic system calculation / not entered by managers

Target Lake/Stream/River Feet or Miles

5.78

I have read and understand Section 15 of the Constitution of the State of Minnesota, Minnesota Statute 97A.056, and the Call for Funding Request. I certify I am authorized to submit this proposal and to the best of my knowledge the information provided is true and accurate.

Outcomes

Programs in metropolitan urbanizing region:

- A network of natural land and riparian habitats will connect corridors for wildlife and species in greatest conservation need *Partners work together to identify priority lands using existing data and public plans, then coordinate protection, restoration and enhancement activities in those priority areas. Work builds upon prior phases and is intended to continue into the future for maximum impact. Mapping shows progress in connecting corridors. Species collections and counts measure impact of activities over time on wildlife and Species in Greatest Conservation Need.*

Parcel List

Explain the process used to select, rank and prioritize the parcels:

FMR and GRG work with their public partners and other interested stakeholders to identify priority projects and areas. Criteria includes ecological and habitat value and potential (biodiversity, size and location), congruence with existing plans and priority areas, adjacency and connectedness to other public and protected lands and complexes, willing and committed landowners and leveraged opportunities.

MLT's competitive RFP process for identifying, prioritizing and selecting parcels for the Metro Big Rivers easement program is attached. MLT prioritizes parcels for restoration and enhancement that are of high ecological significance, adjacent or close to public conservation investments and owned by landowners committed to conservation.

MVT seeks to acquire land within the boundaries established by the USFWS for the Minnesota Valley National Wildlife Refuge in its Comprehensive Conservation Plan. Within those boundaries, parcels are prioritized based on adjacency or proximity to lands already publicly-protected, the opportunity to protect lands from development and restore habitat to meet ecological and public use objectives, and the feasibility of completing large blocks of protected and publicly-managed lands over time.

TPL works with its public partners (Minnesota DNR and local units of government) to identify priority opportunities that expand on and create new public conservation investments that protect high-quality wetland, woodland, prairie and riparian habitat.

Section 1 - Restore / Enhance Parcel List

Carver

Name	TRDS	Acres	Est Cost	Existing Protection?
GRG - Creekside Park	11524224	13	\$335,100	Yes

Dakota

Name	TRDS	Acres	Est Cost	Existing Protection?
FMR - Katharine Ordway Natural History Study Area	02722223	62	\$184,960	Yes
FMR - Vermillion River AMA - Kamen Parcel	11419223	28	\$66,200	Yes
GRG - Garlough & Marthaler Parks	28220217	30	\$210,100	Yes
GRG - Lebanon Hills Regional - Phase IV	27230235	70	\$346,500	Yes
GRG - Valley Park Phase II	28230223	15	\$70,800	Yes

Hennepin

Name	TRDS	Acres	Est Cost	Existing Protection?
GRG - Bassett Creek Park	11821221	33	\$197,500	Yes
GRG - Bass Lake Preserve	28240206	11	\$80,000	Yes
GRG - Wood-Rill SNA	11823236	40	\$31,100	Yes

Ramsey

Name	TRDS	Acres	Est Cost	Existing Protection?
GRG - Hidden Falls Regional Park	28230217	20	\$159,100	Yes

Scott

Name	TRDS	Acres	Est Cost	Existing Protection?
GRG - Spring Lake Park (Scott County)	11422204	15	\$118,400	Yes

Sibley

Name	TRDS	Acres	Est Cost	Existing Protection?
MLT - RRAmb	11226214	80	\$240,000	Yes

Washington

Name	TRDS	Acres	Est Cost	Existing Protection?
GRG - Crystal Spring SNA	32190218	40	\$26,500	Yes
GRG - Falls Creek SNA	32200212	40	\$26,500	Yes
GRG - Wind in the Pines	32190207	64	\$39,300	Yes

Section 2 - Protect Parcel List

Carver

Name	TRDS	Acres	Est Cost	Existing Protection?	Hunting?	Fishing?
MVT - Rapids Lake Unit Addition, MN Valley National Wildlife Refuge	11423206	118	\$826,000	No	Full	Full
MVT - San Francisco Unit Addition, MN Valley National Wildlife Refuge	11424201	168	\$546,000	No	Full	Full
MVT - San Francisco Unit Addition, MN Valley National Wildlife Refuge	11424214	200	\$600,000	No	Full	Full
TPL - Patterson Lake WMA Addition	11625220	650	\$4,500,000	No	Full	Full

Chisago

Name	TRDS	Acres	Est Cost	Existing Protection?	Hunting?	Fishing?
TPL - Carlos Avery WMA Addition	03321205	60	\$80,000	No	Full	Full

Scott

Name	TRDS	Acres	Est Cost	Existing Protection?	Hunting?	Fishing?
MVT - Blakeley Unit Addition, MN Valley National Wildlife Refuge	11326236	194	\$630,500	No	Full	Full

Sibley

Name	TRDS	Acres	Est Cost	Existing Protection?	Hunting?	Fishing?
MVT - Jessenland Unit Addition, MN Valley National Wildlife Refuge	11326225	160	\$400,000	No	Full	Full
TPL - Vale WMA Addition	11326222	165	\$550,000	No	Full	Full

Washington

Name	TRDS	Acres	Est Cost	Existing Protection?	Hunting?	Fishing?
TPL - Paul Hugo Farms WMA Addition	03121222	230	\$1,000,000	No	Full	Full

Section 2a - Protect Parcel with Bldgs

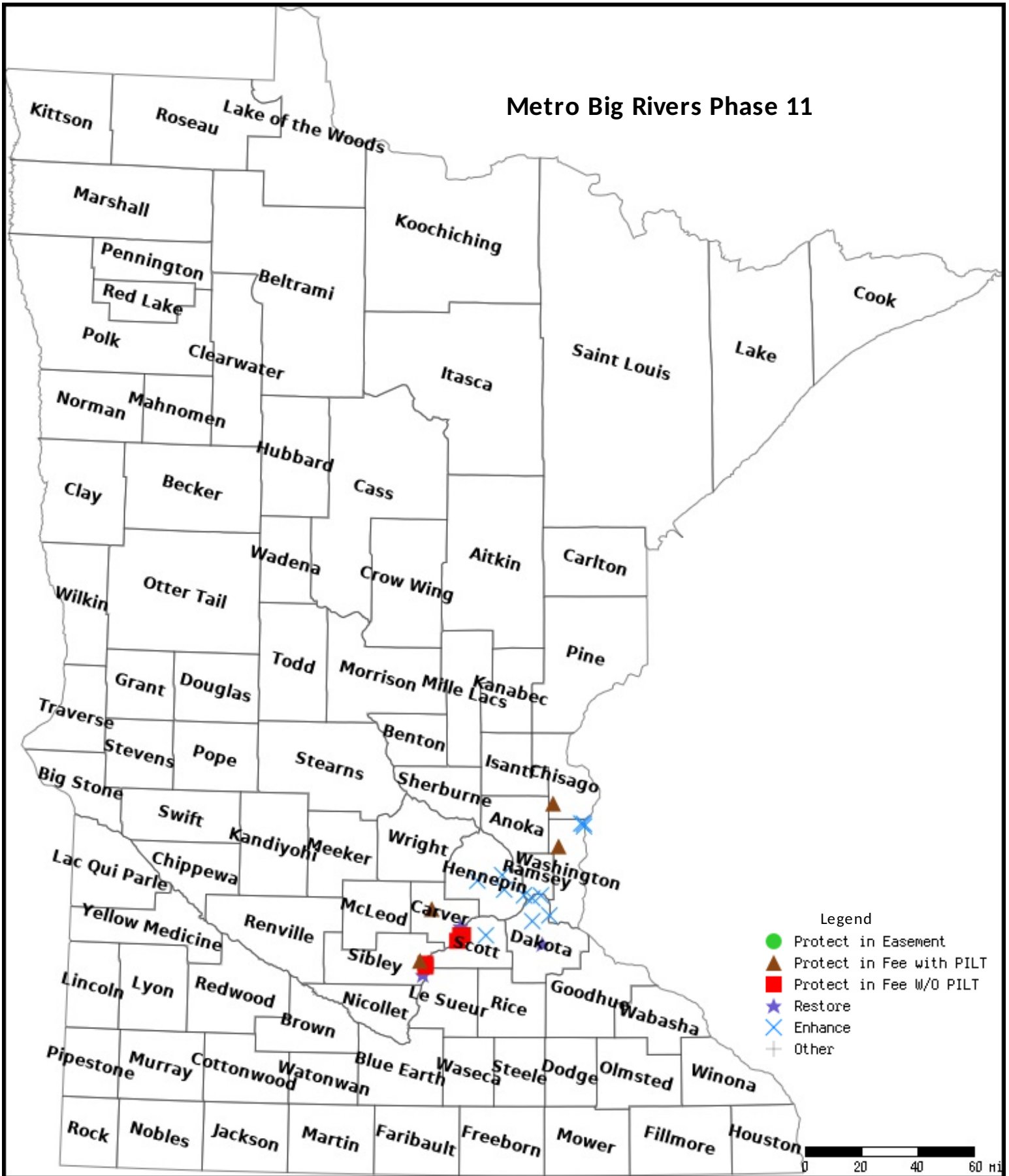
No parcels with an activity type protect and has buildings.

Section 3 - Other Parcel Activity

No parcels with an other activity type.

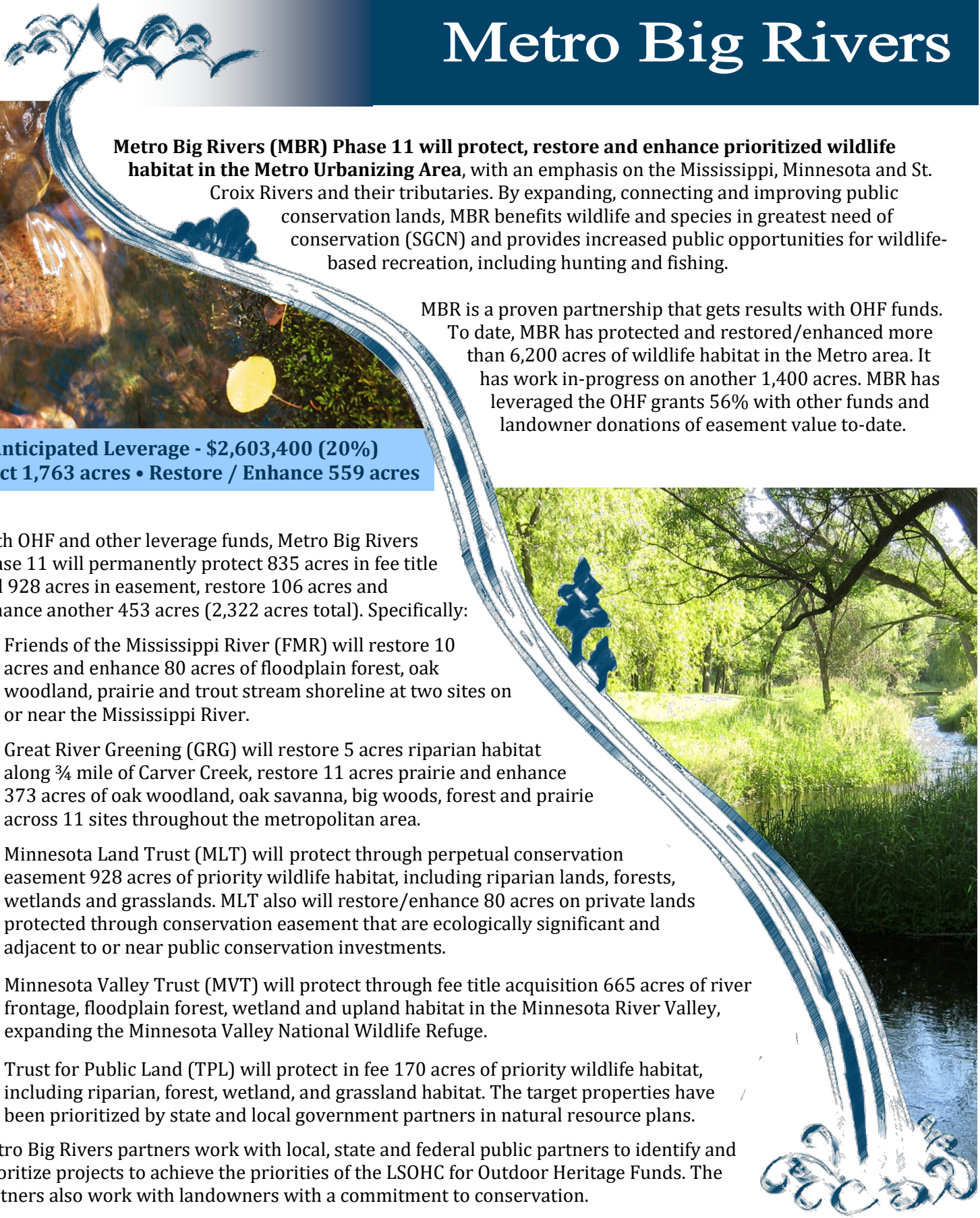
Parcel Map

Metro Big Rivers Phase 11



Data Generated From Parcel List

Metro Big Rivers



Metro Big Rivers (MBR) Phase 11 will protect, restore and enhance prioritized wildlife habitat in the Metro Urbanizing Area, with an emphasis on the Mississippi, Minnesota and St. Croix Rivers and their tributaries. By expanding, connecting and improving public conservation lands, MBR benefits wildlife and species in greatest need of conservation (SGCN) and provides increased public opportunities for wildlife-based recreation, including hunting and fishing.

MBR is a proven partnership that gets results with OHF funds. To date, MBR has protected and restored/enhanced more than 6,200 acres of wildlife habitat in the Metro area. It has work in-progress on another 1,400 acres. MBR has leveraged the OHF grants 56% with other funds and landowner donations of easement value to-date.

**Anticipated Leverage - \$2,603,400 (20%)
Protect 1,763 acres • Restore / Enhance 559 acres**

With OHF and other leverage funds, Metro Big Rivers Phase 11 will permanently protect 835 acres in fee title and 928 acres in easement, restore 106 acres and enhance another 453 acres (2,322 acres total). Specifically:

- Friends of the Mississippi River (FMR) will restore 10 acres and enhance 80 acres of floodplain forest, oak woodland, prairie and trout stream shoreline at two sites on or near the Mississippi River.
- Great River Greening (GRG) will restore 5 acres riparian habitat along $\frac{3}{4}$ mile of Carver Creek, restore 11 acres prairie and enhance 373 acres of oak woodland, oak savanna, big woods, forest and prairie across 11 sites throughout the metropolitan area.
- Minnesota Land Trust (MLT) will protect through perpetual conservation easement 928 acres of priority wildlife habitat, including riparian lands, forests, wetlands and grasslands. MLT also will restore/enhance 80 acres on private lands protected through conservation easement that are ecologically significant and adjacent to or near public conservation investments.
- Minnesota Valley Trust (MVT) will protect through fee title acquisition 665 acres of river frontage, floodplain forest, wetland and upland habitat in the Minnesota River Valley, expanding the Minnesota Valley National Wildlife Refuge.
- Trust for Public Land (TPL) will protect in fee 170 acres of priority wildlife habitat, including riparian, forest, wetland, and grassland habitat. The target properties have been prioritized by state and local government partners in natural resource plans.

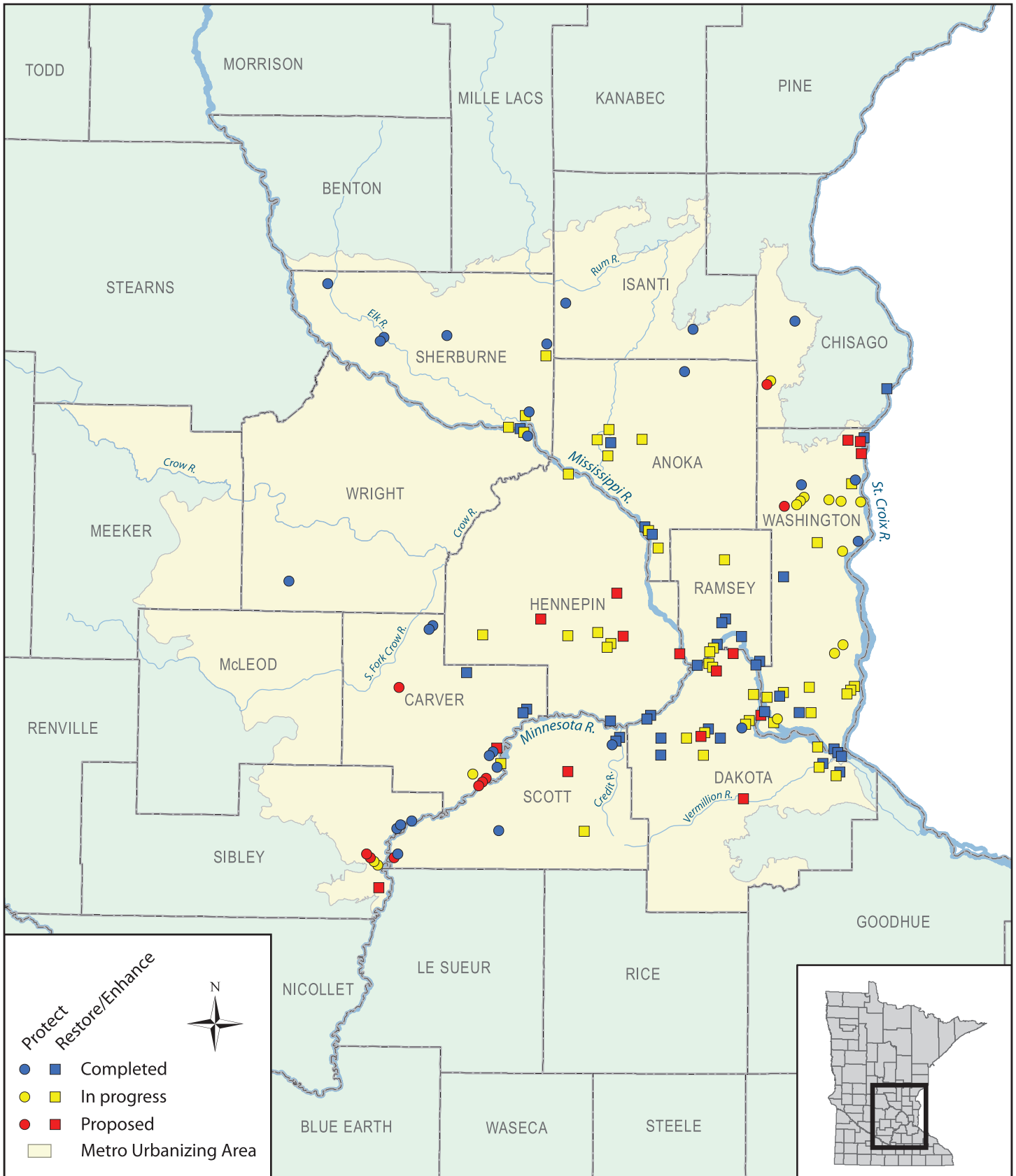
Metro Big Rivers partners work with local, state and federal public partners to identify and prioritize projects to achieve the priorities of the LSOHC for Outdoor Heritage Funds. The partners also work with landowners with a commitment to conservation.



For more information:
Deborah Loon
Minnesota Valley Trust
612-801-1935
DLoon@mnvalleytrust.org

Metro Big Rivers Habitat Partnership

Phase 11



Supplemental Information for Projects
by
Friends of the Mississippi River
MBR11



Before



After



Previous FMR restoration at similar forest habitat in Cottage Grove Ravine Park

Friends of the Mississippi River (FMR) has been conducting ecological restoration and land protection in the Twin Cities metropolitan area for 25 years. FMR's goal is to add functional forest, wetland and prairie habitat for wildlife, fish and Species of Greatest Conservation Need. During FMR's 25 years, we have restored 2,500 acres at more than 60 sites, and permanently protected 2,044 acres at 30 sites.

FMR's restoration projects in this proposal are on ecologically-important sites that provide habitat for wildlife.

With the restoration work proposed here, the wildlife habitat value on these lands will be greatly enhanced.

- One site provides access for fishing and hunting
- The second site is a natural area research site that provides important reserve habitat for game and non-game species



Restored prairie plants and pollinator habitat at some of FMR's sites

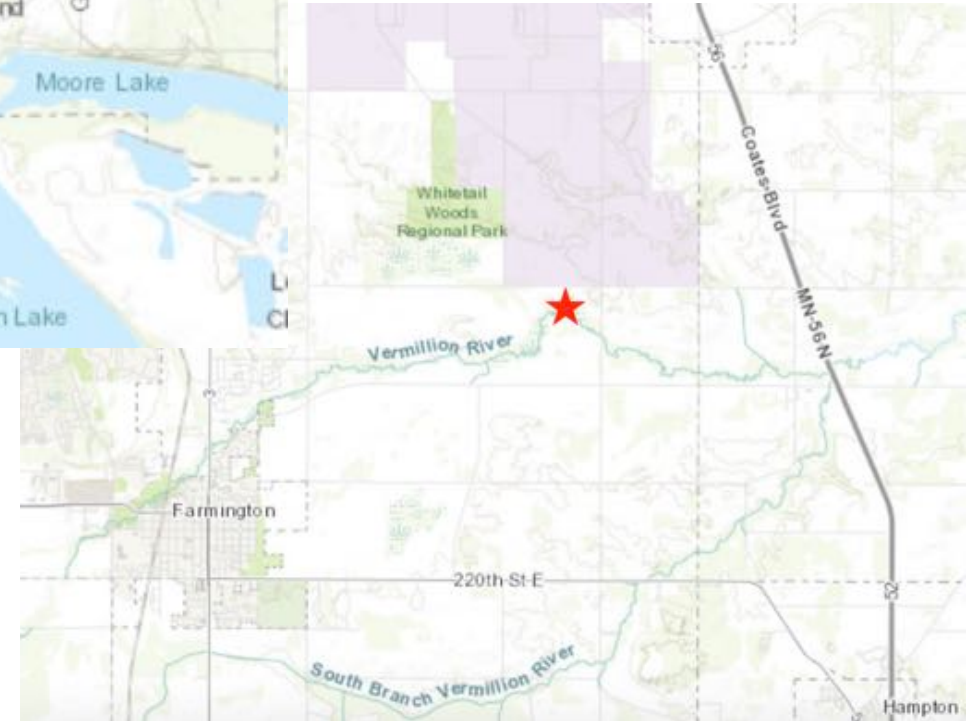
FMR will restore and enhance a total of 90 acres at two sites in Dakota County – one on the Mississippi River and the second on the Vermillion River.

Projects include removal of invasive woody and herbaceous plants, spot-mowing, spot-spraying, prescribed burns and seeding.

- Katharine Ordway Natural History Study Area – 62 acres. Enhance 30 acres of degraded floodplain forest, 30 acres of oak woodland, and 2 acres of prairie
- Vermillion River Aquatic Management Area, Kamen Parcel – 28 acres. Restore 10 acres of degraded grassland to native prairie, enhance 7 acres of degraded riparian woodland, and enhance 11 acres of wetlands



Katherine Ordway
Natural History
Study Area

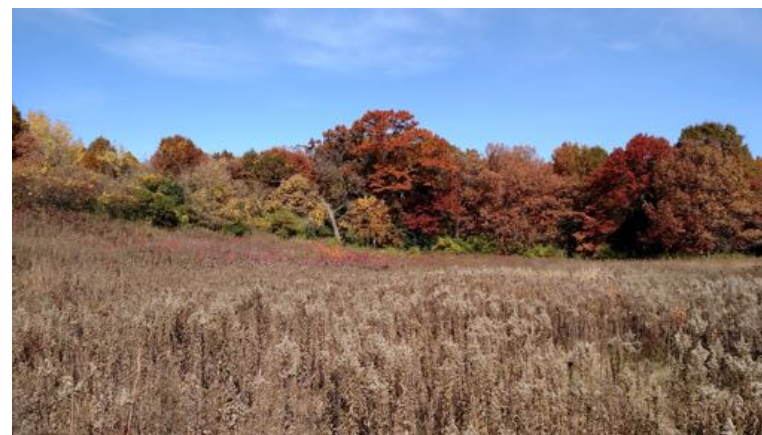


Vermillion River – Kamen Parcel

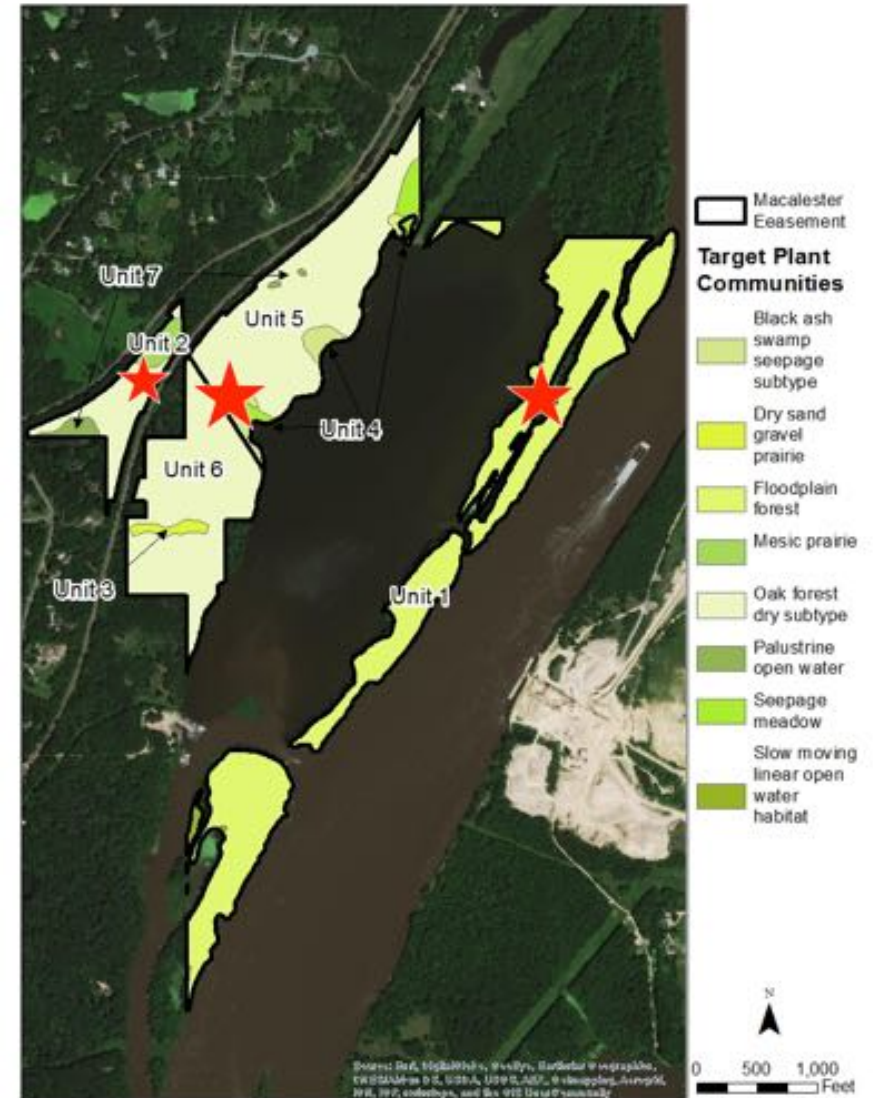
Enhancement at Katherine Ordway Natural History Study Area

The Katherine Ordway Natural History Study Area is a 278-acre parcel of land in Inver Grove Heights owned by Macalester College. The land is protected and used for research and education of natural environments.

The site is next to the Mississippi River, an Audubon-designated Important Bird Area, and provides critical habitat for neotropical migrant birds. It comprises the northern portion of the larger 1,300-acre Pine Bend Bluffs Natural Area that includes a 256-acre state scientific and natural area. The property includes tall grass prairie, oak savanna, woodlands, over 600 species of plants and animals, and 11 plant species unique to the county.



Restoration will remove invasive buckthorn in forested units and woody encroachment into prairies

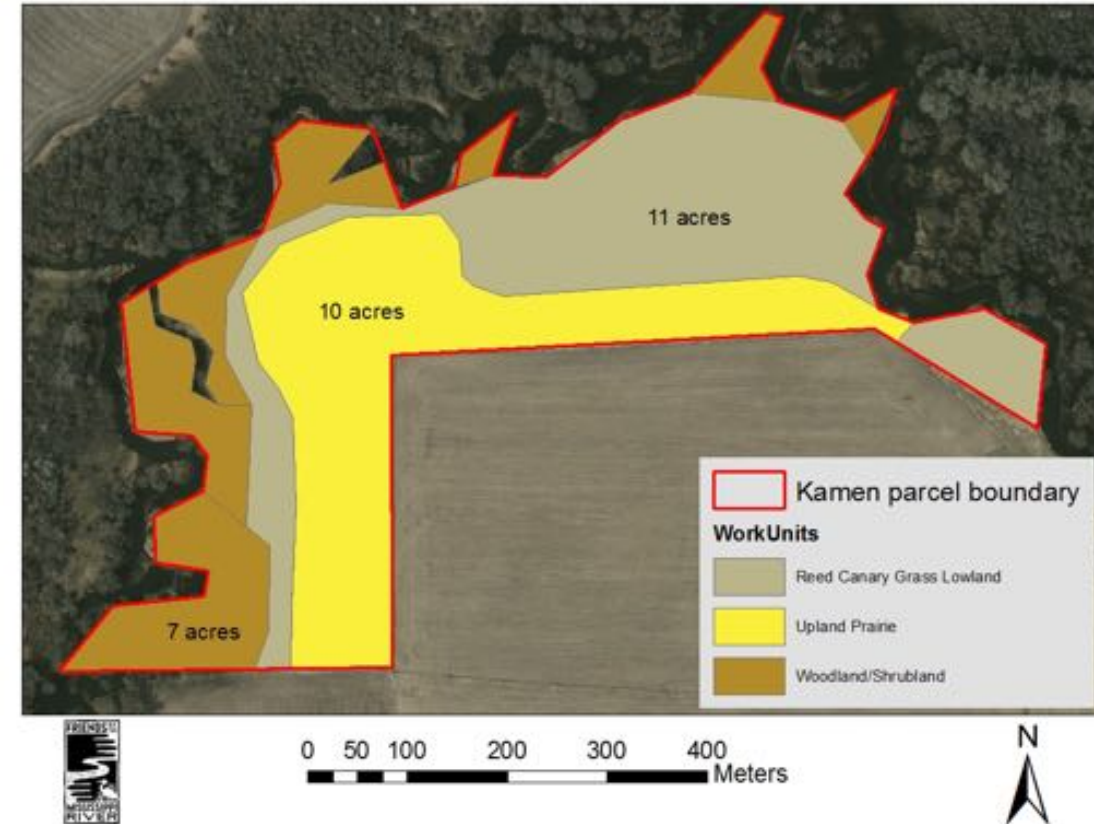


Stars indicate habitat units where restoration will occur

Restoration & Enhancement along the Vermillion River

This site is a 28-acre unit of the Vermillion River Aquatic Management Area (AMA) in Dakota County. It is a designated trout stream, where fishing, trapping and hunting are permitted. AMAs protect critical shore land habitat and provide areas for education and research.

This project will restore 10 acres of degraded grassland to native prairie and enhance 7 acres of degraded riparian woodland along the Vermillion River. It will also create wetland habitat island within a matrix of 11 acres of reed canary grass-dominated lowland.



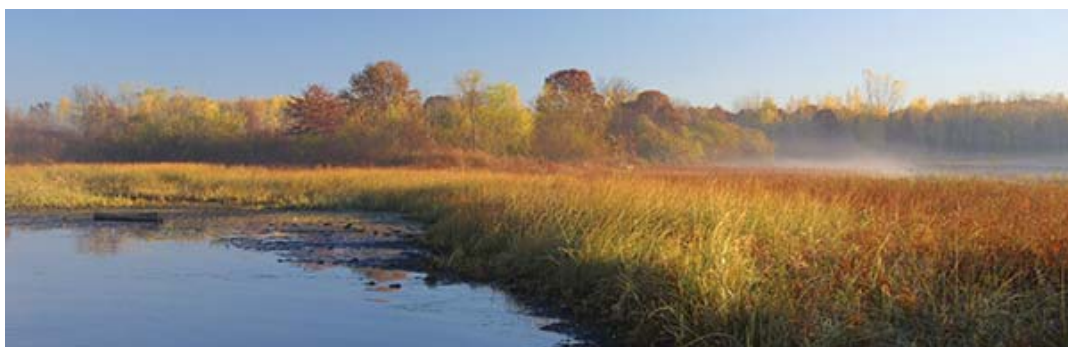
Restoration habitat units along the Vermillion River

The Vermillion River as it winds through the proposed restoration site



Springbrook Nature Center Oak Savanna/Woodland Enhancement (ML2013)

Supplemental Information for Projects submitted by Great River Greening ML 2021



RESTORING LAND, WATER, AND WONDER



Great River Greening’s Mission is to inspire, engage, and lead local communities in conserving and caring for the land and water that enrich our lives.

We focus on locations and activities that offer conservation impact, ecosystem services, and community benefits. While we started in Saint Paul, we now have projects throughout Minnesota. We choose our projects based upon conservation need, feasibility, and community benefits. Current priorities include critical lands and waters in the Metro Area, endangered habitat in the Anoka Sand Plain region of east-central Minnesota, conserving water quality in our state-designated wild and scenic rivers, and collaborating with farmers in agricultural watersheds.

Great River Greening’s enhancement and restoration projects in this proposal will be on various types of protected lands (City, State, County and Easement). Several of the sites are on public land that contain the label “park”. The habitat enhancements proposed are all areas of significant natural resource value for wildlife habitat and not parks in the traditional sense.

While not all of the project sites are open to public hunting and fishing, these parcels are part of habitat corridors that provide important habitat connections through the urban core for various game species and migratory species as they move across the landscape.



25 years of Community based Restoration and Enhancement.

Through the Outdoor Heritage Fund, as a member of Metro Big Rivers Partnership, Great River Greening has restored & enhanced 900 acres and is actively enhancing another 1500 acres.

Restored and Enhanced over 17,500 acres and counting.

Engaged with 46,000 volunteers to protect, restore and care for Minnesota’s Natural Heritage.

RESTORING LAND, WATER, AND WONDER

Creekside Park Carver County



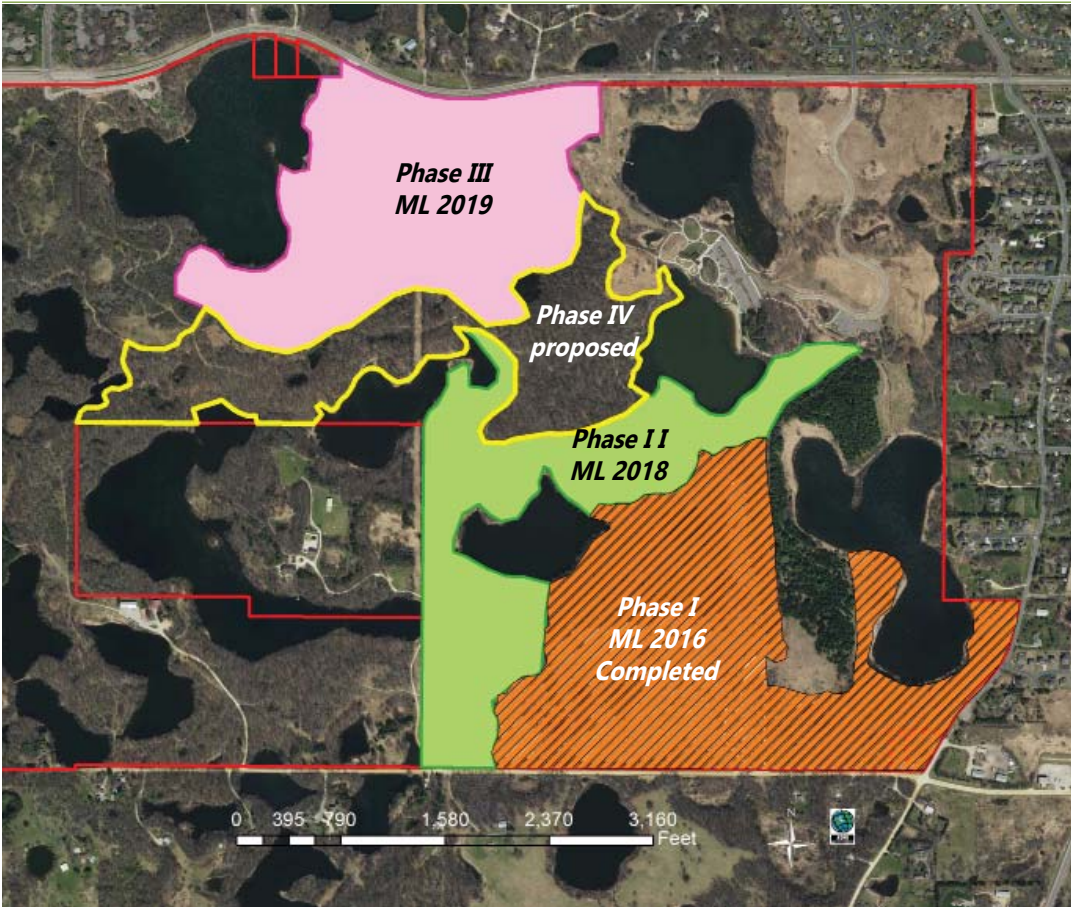
This new park open space site in the City of Carver is upstream of the Minnesota Valley National Wildlife Refuge on Carver Creek. The park will have 15 acres restored or enhanced natural habitats.

The project will:

Restore 5 acres of riparian habitat along a 3/4 mile stretch of Carver Creek. Habitats being restored will include floodplain forest and mesic prairie/meadow. Restoration will focus on native species that provide habitat and nectar sources for pollinators. The project also will also include bank stabilization along both sides of the creek.

An additional 8 acres of upland woodland will be enhanced through invasive species removal and replanting/seeding of native understory species.

Lebanon Hills Phase IV Dakota County



Lebanon Hills Regional Park comprises 2,000 acres of natural area in Dakota County. Phase IV is a continuation of important oak savanna and woodland habitat enhancement within the park.

Phase IV will:

Enhance 70 acres of oak woodland through invasive tree removal and treatment, selective thinning of undesirable tree species, and seeding and planting in the understory.



Phase I (ML2016): Before and After Winter 2017/18 Buckthorn removal and selective canopy thinning

RESTORING LAND, WATER, AND WONDER

Valley Park Phase II Dakota County



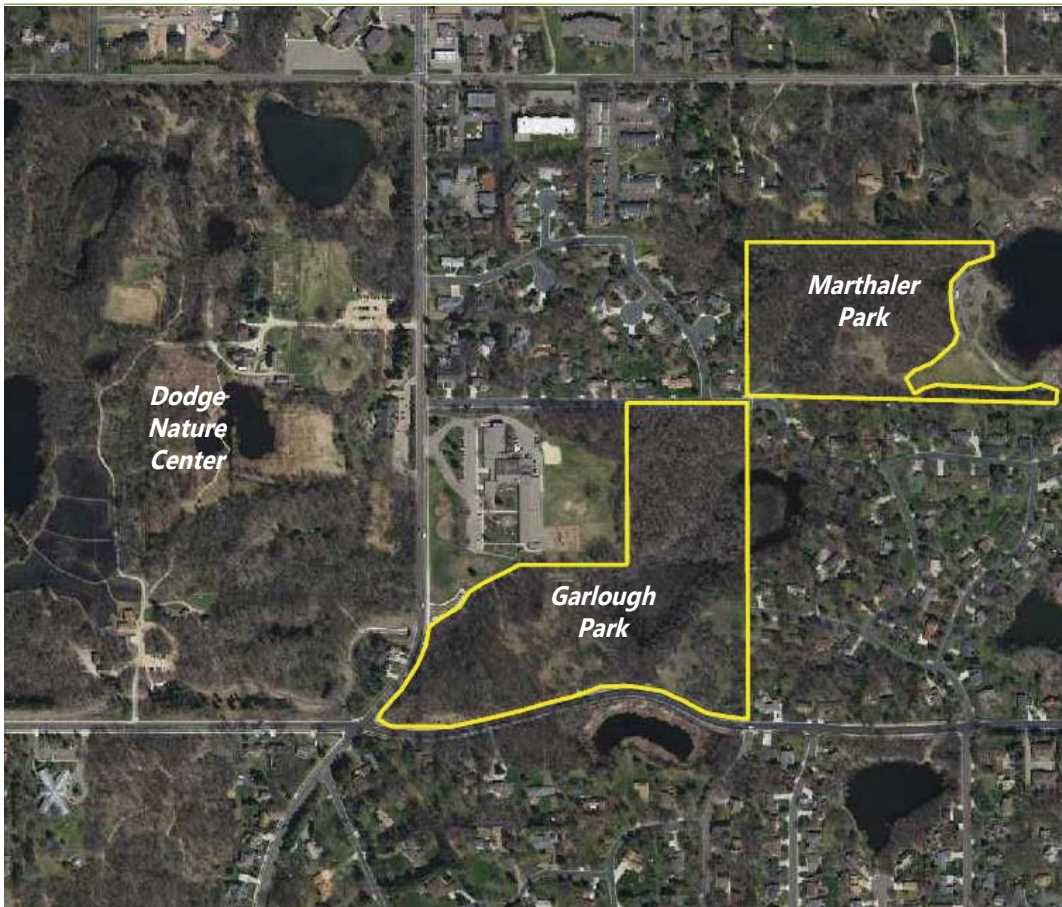
Valley Park comprises 90 acres of natural area in Mendota Heights. Phase II is a continuation of important oak woodland and pollinator habitat within the park. The park has been identified as the western beginning of Dakota County's River to River Pollinator Habitat corridor.

Phase II will:

Enhance 15 acres of oak woodland through invasive species removal, followed by seeding and planting of native understory vegetation.

Removal of exotic species, such as buckthorn, which will increase ground cover that benefits invertebrate pollinator species.

Garlough & Marthaler Parks Dakota County



Garlough and Marthaler Parks are located in West St. Paul and are adjacent to Dodge Nature Center. They are important habitat components along Dakota County's River to River Pollinator Habitat corridor.

The project will include:

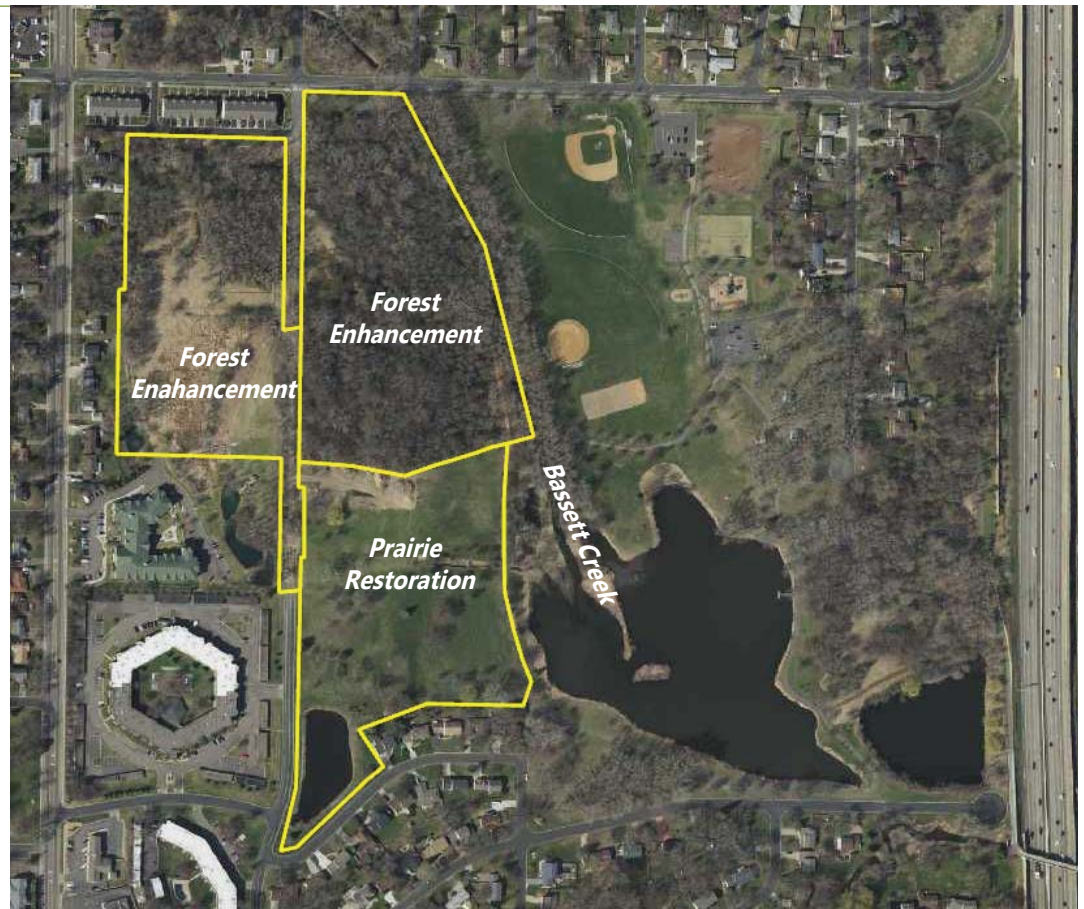
Enhancement of 30 acres of oak savanna and woodland through invasive species management and native understory seeding/planting.

Enhancement of pollinator habitat will be included in the seeding and planting of the understory.

Removal of exotic species, such as buckthorn, has resulted in an increase in ground cover which benefits invertebrate pollinator species.

RESTORING LAND, WATER, AND WONDER

Bassett Creek Park Hennepin County



Bassett Creek Park is the City of Crystal's largest park at 85 acres. This park is located on Bassett Creek. The land west of Bassett Creek is focused on habitat and passive recreation.

With OHF funds, Great River Greening will increase native pollinators and woodland bird species by:

- Restoring 11 acres of mowed turf in southwest part of the park to dry and mesic prairie

- Enhancing 22 acres of forest in northwest of the park through invasive species removal and seeding.

Bass Lake Preserve Hennepin County



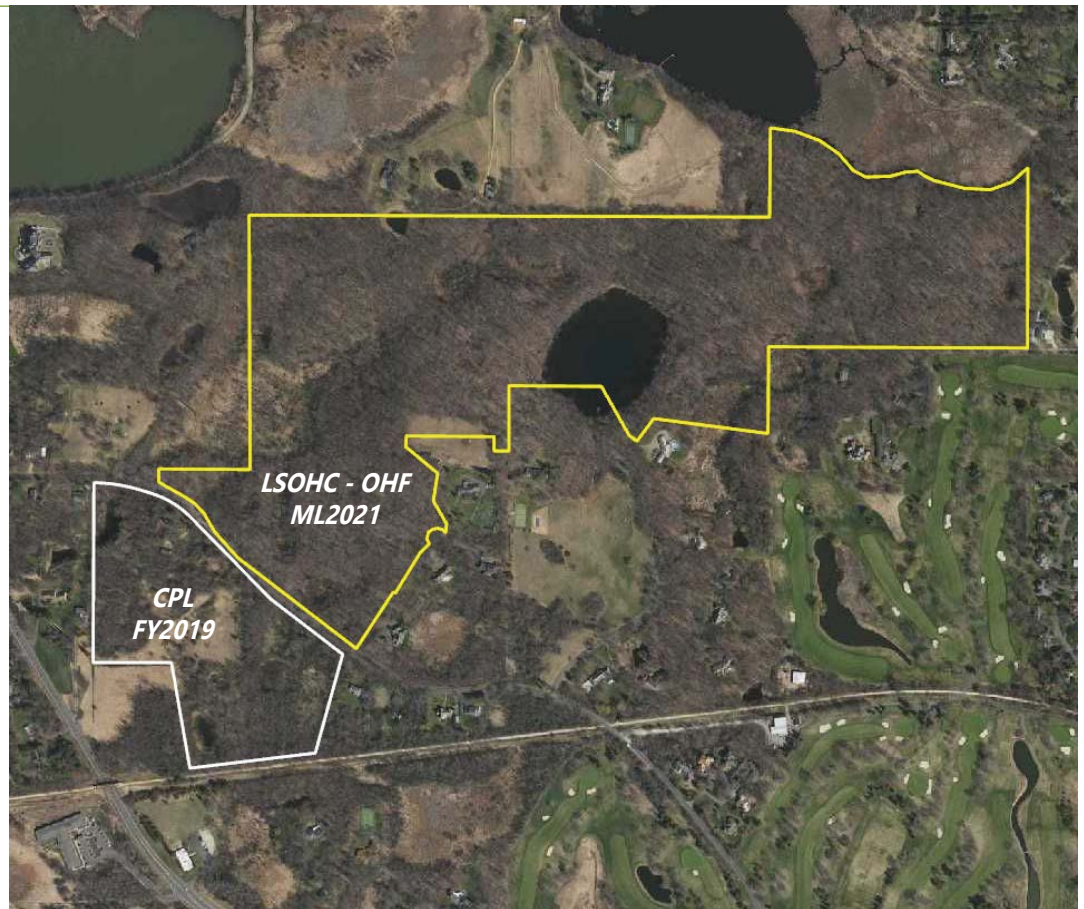
Bass Lake Preserve is a 62 acre nature preserve in St Louis Park. The City has recently refocused its efforts to restore and enhance this natural open space on its eastern side. In preparation of this effort the City commissioned a Natural Resource Management Plan in 2015 in order to understand the full scope of work needed to restore the preserve.

The project will enhance 11 acres native communities of plants/ecosystems through invasive species control and management, and create pollinator habitats where feasible. The two primary ecosystem archetypes that lend themselves to restoration on the site are oak savanna and floodplain forest.

Enhancement activities will include mowing grasses/vegetation, removing invasive species and low-grade trees, then re-seeding and planting native plugs, trees and shrubs (suitable for site) and other vegetation that will enhance ecosystem and create pollinator habitats.

RESTORING LAND, WATER, AND WONDER

Wood-Rill SNA Hennepin County



Wood-Rill SNA preserves an outstanding example of Sugar Maple "Big Woods" forest. This forest type is ranked S2, or imperiled, in the state and is increasingly rare in the developing metro-area.

The project will:

Enhance 40 acres of Sugar Maple forest in the northern unit. This builds on the woody invasive treatment that was completed in the southern unit through a CPL grant. Though not as dense of an infestation in the northern unit, buckthorn and honeysuckle are getting a foot hold around areas where there are gaps in the canopy.

Removal of exotic species at an early stage makes sure that the fragile habitat of the site stays intact and is not degraded.

Hidden Falls Regional Park Ramsey County



Hidden Falls Regional Park is located along the Mississippi River bluffs just below Lock and Dam 1. The park dates back to 1887, when it was selected by Horace Cleveland, a nationally known landscape architect and park planner, as one of four major park sites for the City of Saint Paul.

This project will:

- Enhance 15 acres of floodplain forest along the Mississippi River

- Work will include invasive species removal and large stock native shrub planting. Larger stock plant material has shown to have a higher survival rate in floodplain environments than smaller stock seedlings and saplings.

- On comparable projects there has been an increase in native forest bird species inhabiting the complex.

RESTORING LAND, WATER, AND WONDER

Spring Lake Regional Park Scott County



Spring Lake Regional Park is 373 acres in size with shoreline along both Spring Lake and Prior Lake. The park contains a diversity of natural habitats from lakeshore to maple-basswood forests. A small creek winds through the park's diverse wetland complex that includes open water wetlands, cattail marshes, and a tamarack swamp.

This project will:

Focus on two key areas of oak forest on the south side of the park. Total area involved will be 20 acres. These areas were selected as they are the next areas in the development of the natural resources of the park. A large component of the enhancement work will include invasive species removal and some tree thinning.

As a follow up to the invasive species removal, the understory and groundplain will be seeded and planted with appropriate native species to improve pollinator and bird habitat.

Wind in the Pines & Falls Creek SNA Washington County



Falls Creek SNA and Wind in the Pines Nature Park form a 200 acre habitat complex along the bluffs of the St. Croix River. The complex contains old growth forest, remnant bluff prairies and ephemeral streams.

This project will include:

- Enhancement of 104 acres of forest through invasive tree removal and treatment of buckthorn and honeysuckle.

- Removal of low-medium density woody invasive thickets from across the site before they can form denser stands.

- Removal of exotic species, such as buckthorn, has resulted in an increase in ground cover which benefits invertebrate pollinator species.

Crystal Spring SNA Washington County



Just south of Falls Creek SNA, Crystal Spring SNA is a more recent addition to the state's SNA program, being added in 2016. The site is the location of natural springs that flow out of the sandstone and support brook trout in the lower portions of the creek. The Red Oak - Basswood forest received an A-rank (excellent) when being mapped by the Minnesota Biological Survey.

The project will:

- Enhance 38 acres of Red Oak - Basswood forest along the bluffs of the St. Croix River.

- Remove exotic species at an early stage to ensure the fragile habitat of the site stays intact and is not degraded.



MINNESOTA VALLEY TRUST

Minnesota Valley National Wildlife Refuge Trust, Inc.

The Minnesota Valley Trust, Inc. expands and improves opportunities for the public to connect with wildlife and nature on the Minnesota Valley National Wildlife Refuge and Wetland Management District.

Since its creation in 2000, the Minnesota Valley National Wildlife Refuge Trust, Inc. (Trust) has acquired 6,000 acres to expand the Minnesota Valley National Wildlife Refuge and its Wetland Management District (Refuge).

In addition to land acquisition, the Trust restores and enhances wildlife habitat throughout the Refuge and supports visitor services and urban outreach objectives.

The Trust works in close partnership with the US Fish and Wildlife Service (USFWS) to set goals and identify opportunities. It works within boundaries established by the USFWS in its Comprehensive Conservation Plan for the Refuge complex.

Land acquisition and restoration / enhancement is pursued primarily for the following Refuge expansion units within the Minnesota River corridor, stretching from suburban to rural – Blakeley Unit (Scott County), Jessenland Unit (Sibley County), Rapids Lake Unit (Carver County), St. Lawrence Unit (Scott County) and San Francisco Unit (Carver County). The Trust also pursues acquisition of in-holdings to complete other units of the Refuge from Bloomington to Chaska.

In Metro Big Rivers phases 1 through 7, the Outdoor Heritage Fund (OHF) helped the Trust acquire 690 acres for the Refuge. OHF grants of \$2,775,000 were leveraged 86% by \$2,401,760 in other, private funds to complete five priority acquisitions. The balance of Phase 7 funds are being used for habitat restoration on a priority parcel acquired for the Rapids Lake Unit. Work is underway on phases 8 through 10.



After acquisition, the Trust completes habitat restoration and enhancement work. Agricultural fields are restored to their native conditions of wetland, grassland and prairie habitat. Oak savanna, forest and prairie are restored and enhanced through invasive species removal, seeding and prescribed fire.

Upon completion of initial habitat work, the land is conveyed to the USFWS and opened to the public for wildlife-based recreation, including hunting, fishing, hiking, wildlife observation, wildlife interpretation and photography.





Entrance to the Rapids Lake Unit in Carver County at a hunter parking lot.

Stretching nearly 70 miles along the Minnesota River from Fort Snelling to Henderson, the Minnesota Valley National Wildlife Refuge is a unique resource accessible to more than 3 million residents of the expanding Twin Cities Metropolitan Area. The Refuge covers 14,000 acres of land and water, providing valuable habitat for a diversity of waterfowl and other migratory birds, fish and resident wildlife.

Numerous distinctive units of the Refuge and Wetland Management District range from urban to suburban and rural. They offer a variety of free wildlife-related recreational opportunities, from hiking, interpretation, bird watching and photography to hunting and fishing.

The Minnesota Valley National Wildlife Refuge also manages a 14-county Wetland Management District with more than 8,000 acres of land dedicated to wildlife and wildlife-dependent recreation. The District includes more than 25 Waterfowl

Production Areas and 50 easements on private lands. Each of these areas is critically important to migrating, breeding and nesting waterfowl. They also provide habitat for grassland birds, such as meadowlark and bobolink, and a variety of mammals, reptiles, amphibians, and other creatures.

Printable maps that detail access points, parking lots and trails on each of the Refuge Units and Waterfowl Production Areas are available on the Refuge website - www.fws.gov/refuge/minnesota_valley/.

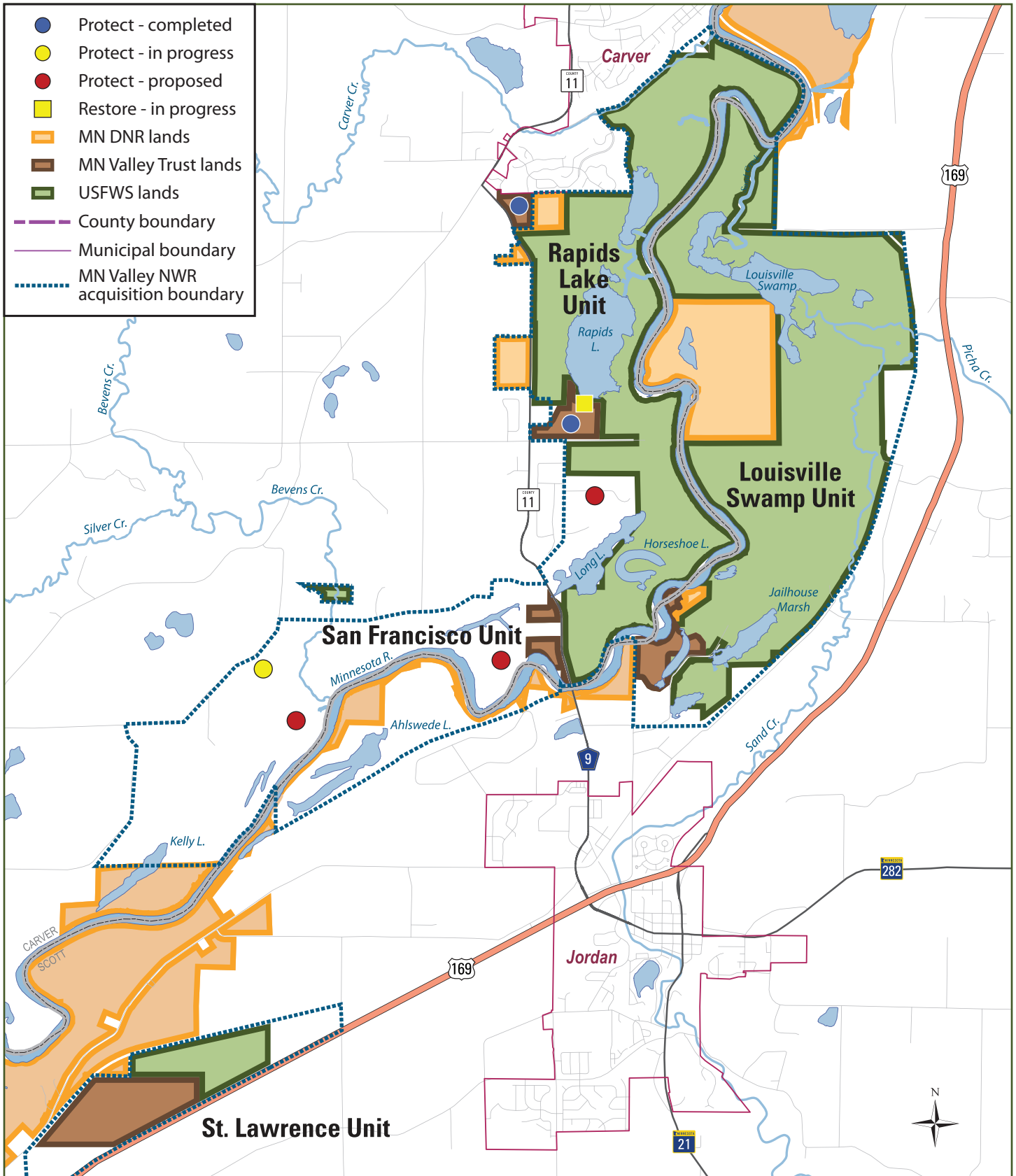
Hunting and fishing are allowed on most Refuge Units. Hunting is allowed on all Waterfowl Production Areas.

Two Refuge Education and Visitor Centers are open to the public and available for school and other groups for educational purposes. They are located in east Bloomington near the airport and Fort Snelling (3815 East American Boulevard) and near Carver (15865 Rapids Lake Road).

Refuge unit maps showing Trust acquisition activity and unit boundaries are on the following pages.

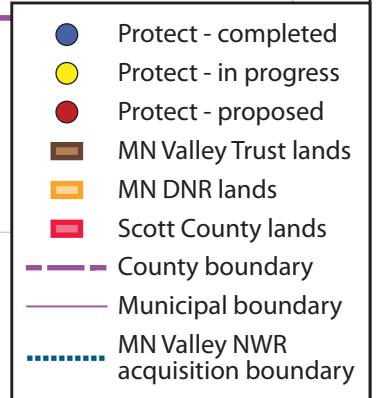
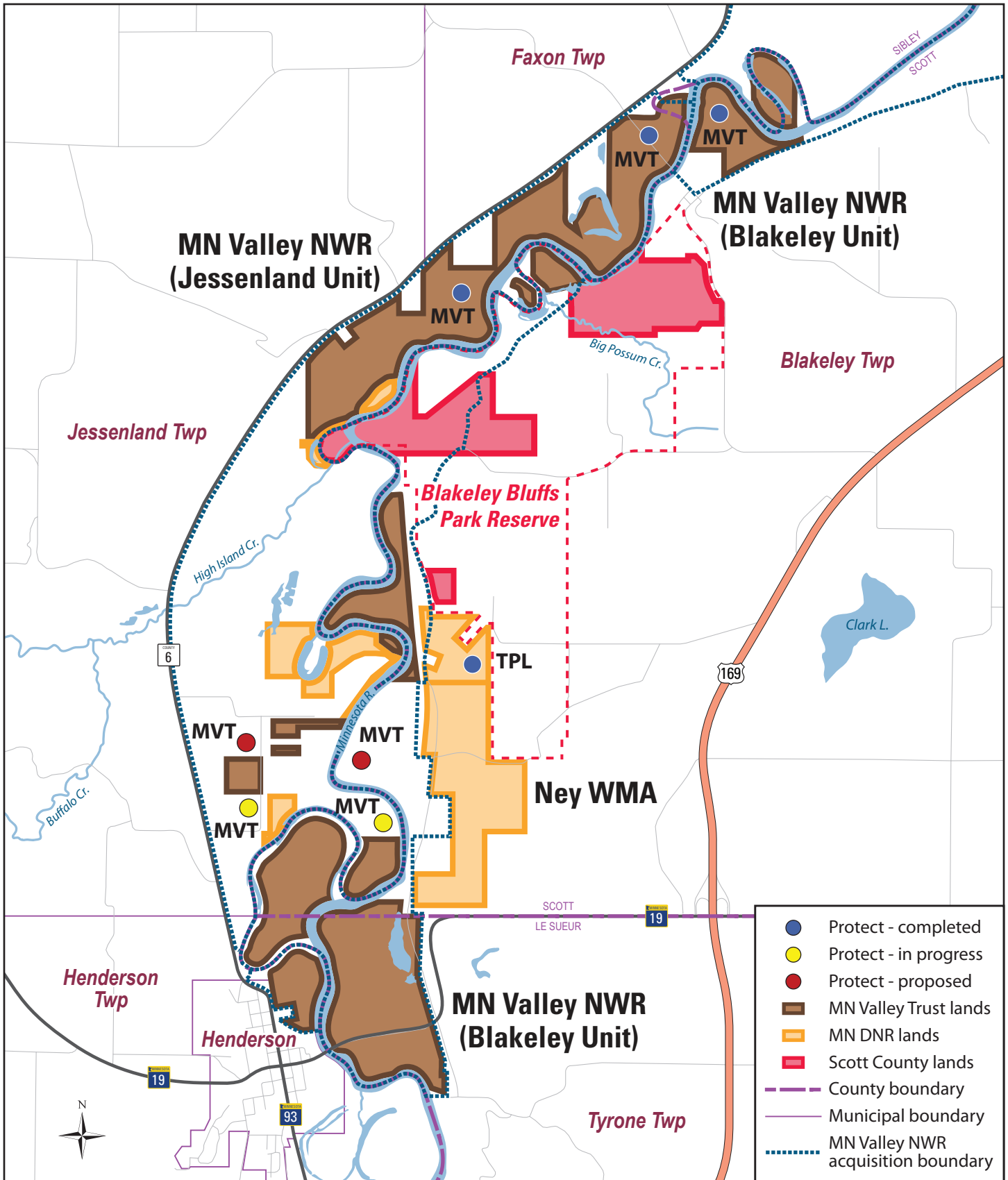
Metro Big Rivers Habitat Partnership

Phase 11



Metro Big Rivers Habitat Partnership

Phase 11



Metro Big Rivers

The Trust for Public Land is working to permanently protect high-quality habitat for fish and wildlife along the Mississippi, Minnesota, and St. Croix rivers and their tributaries in the Twin Cities region. In addition to safeguarding the diversity of threatened ecosystems, this work provides close-to-home public access for hunting and fishing for millions of Minnesotans, and creates natural connections between wildlife habitat corridors.

The Metro Big Rivers program is unique due to its proximity to the Twin Cities. Despite the impacts of development in the metropolitan urbanizing area, high-quality riparian, forest, wetland and grassland habitat remain. By protecting these threatened lands, we are able to create close-to-home opportunities for millions of Minnesotans to experience a variety of wildlife-based recreation opportunities. To date, The Trust for Public Land has protected 1,703 acres through eight acquisitions with support from the Outdoor Heritage Fund.

How we work

In partnership with several conservation organizations, The Trust for Public Land is proactively working with communities, and local and state government to **expand, restore, enhance, and connect quality habitat in the metropolitan/urbanizing area**. Through fee-title acquisition, The Trust for Public Land is protecting high-priority property to conserve habitat and provide land for people to get outside and enjoy. Funding comes from the Outdoor Heritage Fund, foundations, and individual contributions.



Examples of our work

- **William H. Houlton Conservation Area:** With seven miles of shoreline at the confluence of the Mississippi and Elk Rivers, this 335 acre property was previously one of the largest pieces of unprotected land along this stretch of the Mississippi River. Now the area's floodplain forest, oak savanna, and restored prairie will provide outstanding opportunities for public hunting and fishing.
- **Blakely Bluffs:** Blakely Bluffs is a 128-acre area with large swaths of forest and blufflands with stunning views bordering the Minnesota River. Protected by The Trust for Public Land as an addition to Ney Wildlife Management Area, this beautiful land is now publically accessible for hunting and wildlife observation.
- **Grass Lake Wildlife Management Area Addition:** This property consists of wetlands, rolling hills, forested areas, and agricultural land that will be restored to prairie. Protecting these 116 acres will advance efforts to restore a drained wetland and improve water quality. Home to species including deer and pheasant, it provides excellent hunting and wildlife observation opportunities.



The Trust for Public Land creates parks and protects land for people, ensuring healthy, livable communities for generations to come.

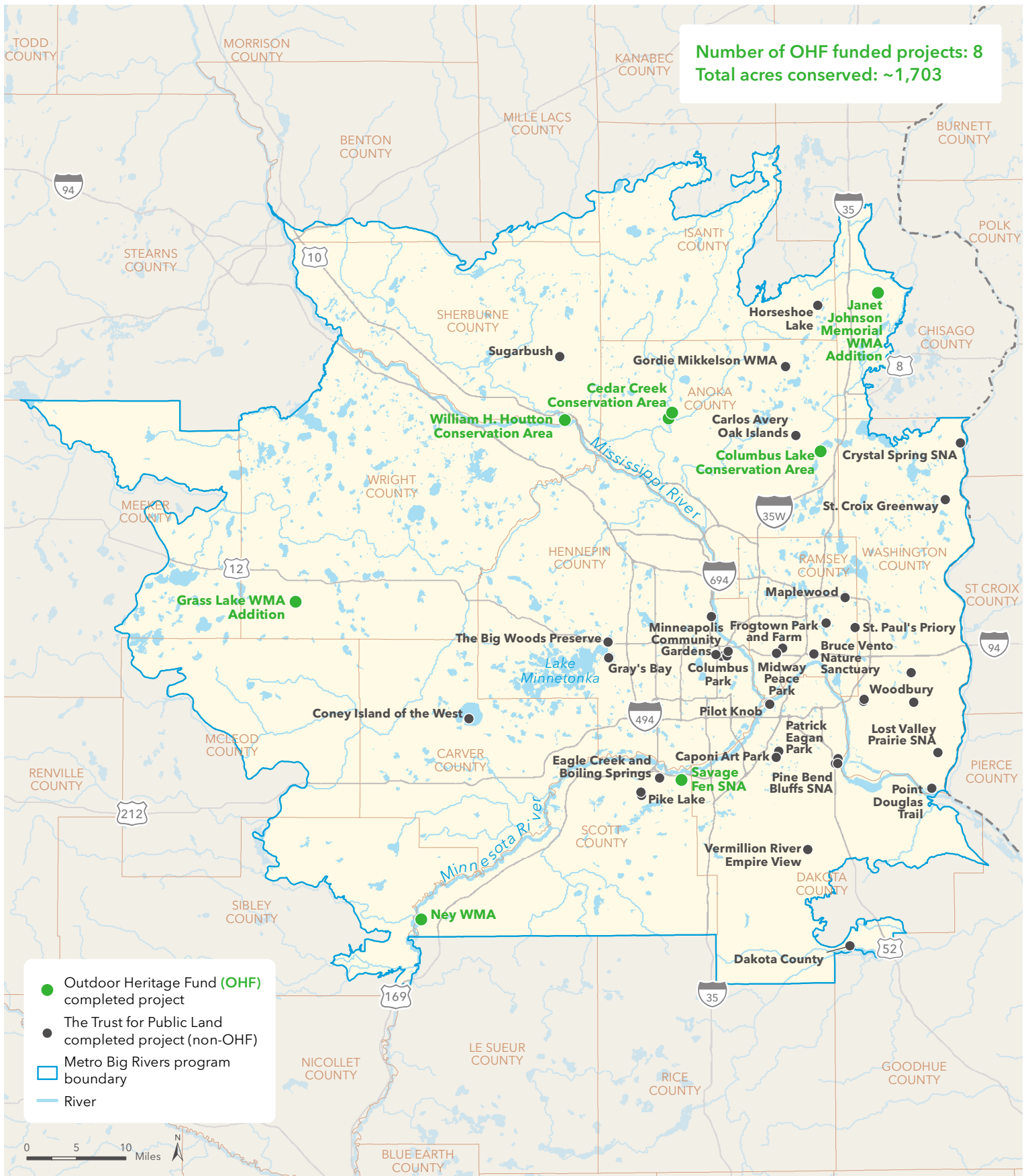
tpl.org

FOR MORE INFORMATION:

Bob McGillivray - Land Protection Director
2610 University Avenue, Suite 300
St. Paul, MN 55114
651.999.5307

Bob.McGillivray@tpl.org

PHOTOS: Andy Richter
PRINTED ON 100% RECYCLED PAPER. ©2015 THE TRUST FOR PUBLIC LAND.



Metro Big Rivers

MINNESOTA RIVERS: SUB-PROGRAMS

May 29, 2019. Copyright © The Trust for Public Land. The Trust for Public Land and The Trust for Public Land logo are federally registered marks of The Trust for Public Land. Information on this map is provided for purposes of discussion and visualization only. www.tpl.org

