



## Lessard-Sams Outdoor Heritage Council

---

### Laws of Minnesota 2021 Accomplishment Plan

#### General Information

**Date:** 12/11/2020

**Project Title:** DNR Grassland Phase XIII

**Funds Recommended:** \$3,534,000

**Legislative Citation:** ML 2021, Ch. XX, Art. 1, Sec. 2, subd.

**Appropriation Language:**

#### Manager Information

**Manager's Name:** Greg Hoch

**Title:** Prairie Habitat Supervisor

**Organization:** DNR

**Address:** 500 Lafayette Rd

**City:** St Paul, MN 55155

**Email:** greg.hoch@state.mn.us

**Office Number:** 651-259-5230

**Mobile Number:** 218-443-0476

**Fax Number:**

**Website:**

#### Location Information

**County Location(s):** Polk, Clay, Wilkin, Grant, Pope, Kittson, Mahnommen, Red Lake, Douglas, Marshall, Otter Tail, Norman, Roseau, Stevens, Traverse, Goodhue, Fillmore, Dakota, Washington, Wabasha, Sherburne, Houston, Todd, Lac qui Parle, Big Stone, Swift, Jackson, Lyon, Murray, Renville, Kandiyohi, Yellow Medicine, Redwood, Brown, Meeker, Benton, Chippewa, Morrison, Lincoln, Freeborn, Aitkin, Cass, Faribault, Cottonwood, Pennington, Olmsted, Pipestone, Martin and Mille Lacs.

**Eco regions in which work will take place:**

- Northern Forest
- Forest / Prairie Transition
- Prairie
- Metro / Urban
- Southeast Forest

**Activity types:**

- Restore
- Enhance

**Priority resources addressed by activity:**

- Prairie

## **Narrative**

### **Abstract**

Grasslands continue to be the most threatened habitat in the state. This programmatic request will build on the DNR's history of enhancing and restoring grasslands, embedded wetlands, and oak savannas to increase wildlife populations. The Prairie Plan, Pheasant Plan, and Wildlife Action Plan will guide our efforts to ensure we are operating in a strategic and targeted manner. This proposal will enhance and restore grasslands on parcels that are permanently protected and most open to public hunting, including DNR WMAs, SNAs, AMAs, Native Prairie Bank (NPB) easements, State Forests, as well as federal WPAs and NWRs.

### **Design and Scope of Work**

In many farmland counties less than five percent of the area is in public wildlife lands, often much less. We continue to lose about 200 acres of native prairie per year. While Minnesota does have acres enrolled in CRP as well as state programs such as RIM and CREP, there is still very little grassland left in many counties of the state. As such, we need to make sure the remaining grasslands, especially those open to public recreation are as diverse and productive as possible. These lands provide wildlife habitat as well as

Wildlife and pollinator populations are a fraction of what they were even a decade ago. Water quality, especially nitrate contamination, is a human health and wildlife issue. Restoring and enhancing grasslands are one of the most effective ways to improve all of these issues. Grassland and wetland restoration and enhancement, carefully guided by planning, is one of the best ways to address many of these issues.

This programmatic request seeks funding to enhance grassland habitat on permanently protected grasslands and prairies, most of which are open to public hunting. Without periodic management to simulate historical disturbance patterns, grassland lose diversity and productivity. Invasive species may increase and woody vegetation will encroach into the grasslands, changing their very character and the species that inhabit the area. The activities listed in this proposal will use BMPs for grassland enhancement and diverse local ecotype seed mixes for restoration.

This request is part of larger efforts among the grassland community. For instance, in July 2020, multiple partners worked together to submit a SAFE (State Acre For wildlife Enhancement) to FSA to boost CRP acres in Minnesota.

## **How does the plan address habitats that have significant value for wildlife species of greatest conservation need, and/or threatened or endangered species, and list targeted species?**

Grasslands and grassland wildlife continue to be the most threatened habitat and populations, both in Minnesota and across the Midwest.

According to the Wildlife Action Plan, Minnesota's grasslands contain 4 state threatened species, 14 state endangered species, and 29 species of concern. The species on this list include 1 amphibian, 11 birds, 5 mammals, 16 moths and butterflies, 9 other invertebrates, and 5 reptiles. The Dakota skipper was recently federally listed as threatened and the Poweshiek's skipperling as endangered. Minnesota is a key state for monarch butterflies and they need the pollen and nectar found in grasslands to complete their life cycle.

With few exceptions, grasslands for game species, nongame species, SGCN, and T&E species are similar. They all need habitat composed of a diversity of native grasses and forbs. Enhancements for one species will almost always benefit dozens of other species in the habitat. Many species of invertebrates and pollinators need a diversity and abundance of flowering plants. Many birds need grassland free of trees. All species need clean water free of sediment and chemical pollutants. While the work proposed here will benefit game species, non-game species, SGCN, and T&E, it will also go beyond these objectives to provide numerous ecosystem services such as water filtration, floodwater retention and reduced flood damage, and create pollinator habitat to help sustain segments of the agricultural economy.

## **Describe how the plan uses science-based targeting that leverages or expands corridors and complexes, reduces fragmentation or protects areas identified in the MN County Biological Survey:**

The projects in this proposal will be guided primarily by the Prairie Conservation Plan as well as the Pheasant and Duck Action Plans. First and foremost, these Plans outline focal areas (Core Areas and Habitat Complexes) where we can build on an existing base of conservation lands and improve the habitat there. The Prairie Plan identifies specific corridors and complexes that connect larger core areas. The latest science is telling us that it isn't the size of an individual habitat parcel that matters as much as the amount of habitat in the larger surrounding landscape. These Plans, and the work proposed here, build on these concepts of landscape level habitat planning. We will not restrict ourselves to these focal areas. There are critical habitats outside these areas. However, we will use these Plans to focus our efforts in areas where they can have the greatest wildlife benefits. The first Conservation Focus Area is in the prairie region of the state. Additionally, conservation partners (DNR, USFWS, TNC, and Audubon) recently received a grant through the USFWS to help us monitor habitat quality, wildlife abundance, and the response of wildlife to all OHF funded activities in these areas. Partners recently published a research paper on their first years of data. The DNR and our conservation partners take these funds, and the monitoring of outputs and outcomes, seriously.

## **Which two sections of the Minnesota Statewide Conservation and Preservation Plan are most applicable to this project?**

- H1 Protect priority land habitats
- H5 Restore land, wetlands and wetland-associated watersheds

## Which two other plans are addressed in this program?

- Long Range Plan for the Ring-Necked Pheasant in MN
- Minnesota Prairie Conservation Plan

## Which LSOHC section priorities are addressed in this program?

### Forest / Prairie Transition

- Protect, enhance, and restore rare native remnant prairie

### Metro / Urban

- Protect, enhance, and restore remnant native prairie, Big Woods forests, and oak savanna with an emphasis on areas with high biological diversity

### Northern Forest

- Restore and enhance habitat on existing protected properties, with preference to habitat for rare, endangered, or threatened species identified by the Minnesota County Biological Survey

### Prairie

- Restore or enhance habitat on public lands

### Southeast Forest

- Protect, enhance, and restore remnant goat prairies

## Does this program include leveraged funding?

No

## Per MS 97A.056, Subd. 24, Please explain whether the request is supplanting or is a substitution for any previous funding that was not from a legacy fund and was used for the same purpose.

These funds are for additional enhance/restoration work beyond what the DNR is already conducting. These funds are not supplanting or substituting any funds.

## Non-OHF Appropriations

Year	Source	Amount
2019	Game and Fish (Wildlife Operations)	24196000
2019	Dedicated Accounts (Duck Stamp, Pheasant Stamp, etc)	3919000
2019	Heritage Enhancement Acct	3466000

## How will you sustain and/or maintain this work after the Outdoor Heritage Funds are expended?

We select projects with these funds that strategically enhance priority habitats. We will continue management of these sites with agency staff DNR and USFWS. The OHF provides Minnesota's conservation community with a large amount of non-Federal dollars as match that other Midwestern states don't have. In recent years, the Minnesota prairie conservation partners have been coordinating to maximize our efforts with funding sources such as the North American Wetland Conservation Act (NAWCA).

## Actions to Maintain Project Outcomes

Year	Source of Funds	Step 1	Step 2	Step 3
2024	Those listed above and OHF	Monitor subset of projects	Document results	Determine capacity for traditional funds to meet results
2025 and beyond	Those listed above and OHF	Continue monitoring	adapt results to future projects	seek funding for continued monitoring

### Activity Details

#### Requirements

**If funded, this program will meet all applicable criteria set forth in MS 97A.056?**

Yes

**Will restoration and enhancement work follow best management practices including MS 84.973 Pollinator Habitat Program?**

Yes

**Is the restoration and enhancement activity on permanently protected land per 97A.056, Subd 13(f), tribal lands, and/or public waters per MS 103G.005, Subd. 15?**

Yes

**Where does the activity take place?**

- WMA
- WPA
- SNA
- AMA
- Permanently Protected Conservation Easements
- Refuge Lands
- State Forests

### Land Use

**Will there be planting of any crop on OHF land purchased or restored in this program?**

Yes

**Explain what will be planted:**

There may be an instance of very limited rowcrop planting as part of a restoration process. But this would only be for a very short time before the site is planted to native grasses and forbs. Some of the crops may be G MO, but none of the crops should be treated with neonicotinoid seed coats and any farming will follow standard chemical use practices as outlined in DNR Operational

Orders.

### Timeline

Activity Name	Estimated Completion Date
WMA Enhancement / Restoration - contracts	6/30/2026
SNA / NPB Enhancements	6/30/2026

**Date of Final Report Submission:** 11/01/2026

## Budget

Budget reallocations up to 10% do not require an amendment to the Accomplishment Plan.

### Totals

Item	Funding Request	Antic. Leverage	Leverage Source	Total
Personnel	\$397,500	-	-	\$397,500
Contracts	\$2,423,300	-	-	\$2,423,300
Fee Acquisition w/ PILT	-	-	-	-
Fee Acquisition w/o PILT	-	-	-	-
Easement Acquisition	-	-	-	-
Easement Stewardship	-	-	-	-
Travel	\$123,400	-	-	\$123,400
Professional Services	-	-	-	-
Direct Support Services	\$85,200	-	-	\$85,200
DNR Land Acquisition Costs	-	-	-	-
Capital Equipment	-	-	-	-
Other Equipment/Tools	\$5,600	-	-	\$5,600
Supplies/Materials	\$499,000	-	-	\$499,000
DNR IDP	-	-	-	-
<b>Grand Total</b>	<b>\$3,534,000</b>	-	-	<b>\$3,534,000</b>

### Personnel

Position	Annual FTE	Years Working	Funding Request	Antic. Leverage	Leverage Source	Total
Laborers and Seasonals	0.17	4.0	\$23,400	-	-	\$23,400
SNA Specs and TEchs (EWR)	1.32	4.0	\$370,300	-	-	\$370,300
Project Management (EWR)	0.01	4.0	\$3,800	-	-	\$3,800

**Amount of Request:** \$3,534,000

**Amount of Leverage:** -

**Leverage as a percent of the Request:** 0.0%

**DSS + Personnel:** \$482,700

**As a % of the total request:** 13.66%

**Easement Stewardship:** -

**As a % of the Easement Acquisition:** -

**How will this program accommodate the reduced appropriation recommendation from the original proposed requested amount?**

This request consists of multiple projects. The original list will be evaluated and outcomes will be proportionately scaled.

**Describe and explain leverage source and confirmation of funds:**

## Personnel

**Has funding for these positions been requested in the past?**

Yes

**Please explain the overlap of past and future staffing and position levels previously received and how that is coordinated over multiple years?**

## Contracts

**What is included in the contracts line?**

Hiring contractors do conduct enhancements. Contractors often have tools and equipment DNR staff don't have. These contracts complement the work of the roving crews.

## Travel

**Does the amount in the travel line include equipment/vehicle rental?**

Yes

**Explain the amount in the travel line outside of traditional travel costs of mileage, food, and lodging**

**I understand and agree that lodging, meals, and mileage must comply with the current MMB Commissioner Plan:**

No

## Direct Support Services

**How did you determine which portions of the Direct Support Services of your shared support services is direct to this program?**

I used the DNR calculator designed for OHF/LCCMR projects

## Other Equipment/Tools

**Give examples of the types of Equipment and Tools that will be purchased?**

drip torches, other fire equipment

## Federal Funds

**Do you anticipate federal funds as a match for this program?**

No

## Output Tables

### Acres by Resource Type (Table 1)

Type	Wetland	Prairie	Forest	Habitat	Total Acres
Restore	-	650	-	-	650
Protect in Fee with State PILT Liability	-	-	-	-	-
Protect in Fee w/o State PILT Liability	-	-	-	-	-
Protect in Easement	-	-	-	-	-
Enhance	-	5,876	-	-	5,876
<b>Total</b>	-	<b>6,526</b>	-	-	<b>6,526</b>

### Total Requested Funding by Resource Type (Table 2)

Type	Wetland	Prairie	Forest	Habitat	Total Funding
Restore	-	\$351,200	-	-	\$351,200
Protect in Fee with State PILT Liability	-	-	-	-	-
Protect in Fee w/o State PILT Liability	-	-	-	-	-
Protect in Easement	-	-	-	-	-
Enhance	-	\$3,182,800	-	-	\$3,182,800
<b>Total</b>	-	<b>\$3,534,000</b>	-	-	<b>\$3,534,000</b>

### Acres within each Ecological Section (Table 3)

Type	Metro/Urban	Forest/Prairie	SE Forest	Prairie	N. Forest	Total Acres
Restore	40	76	172	214	148	650
Protect in Fee with State PILT Liability	-	-	-	-	-	-
Protect in Fee w/o State PILT Liability	-	-	-	-	-	-
Protect in Easement	-	-	-	-	-	-
Enhance	67	548	1,422	3,829	10	5,876
<b>Total</b>	<b>107</b>	<b>624</b>	<b>1,594</b>	<b>4,043</b>	<b>158</b>	<b>6,526</b>

### Total Requested Funding within each Ecological Section (Table 4)

Type	Metro/Urban	Forest/Prairie	SE Forest	Prairie	N. Forest	Total Funding
Restore	\$21,900	\$41,300	\$93,700	\$114,300	\$80,000	\$351,200
Protect in Fee with State PILT Liability	-	-	-	-	-	-
Protect in Fee w/o State PILT Liability	-	-	-	-	-	-
Protect in Easement	-	-	-	-	-	-
Enhance	\$36,300	\$296,000	\$767,700	\$2,077,100	\$5,700	\$3,182,800
<b>Total</b>	<b>\$58,200</b>	<b>\$337,300</b>	<b>\$861,400</b>	<b>\$2,191,400</b>	<b>\$85,700</b>	<b>\$3,534,000</b>

### Average Cost per Acre by Resource Type (Table 5)

Type	Wetland	Prairie	Forest	Habitat
Restore	-	\$540	-	-
Protect in Fee with State PILT Liability	-	-	-	-
Protect in Fee w/o State PILT Liability	-	-	-	-
Protect in Easement	-	-	-	-
Enhance	-	\$541	-	-

### Average Cost per Acre by Ecological Section (Table 6)

Type	Metro/Urban	Forest/Prairie	SE Forest	Prairie	N. Forest
Restore	\$547	\$543	\$544	\$534	\$540
Protect in Fee with State PILT Liability	-	-	-	-	-
Protect in Fee w/o State	-	-	-	-	-



PILT Liability					
Protect in Easement	-	-	-	-	-
Enhance	\$541	\$540	\$539	\$542	\$570

## Target Lake/Stream/River Feet or Miles

## Outcomes

### Programs in forest-prairie transition region:

- Protected, restored, and enhanced nesting and migratory habitat for waterfowl, upland birds, and species of greatest conservation need ~ *Migratory game and non-game birds will be some of the primary beneficiaries of this work. We hope to continue to strengthen partnerships with the University of Minnesota to incorporate graduate students into research and monitoring work.*

### Programs in metropolitan urbanizing region:

- Core areas protected with highly biologically diverse wetlands and plant communities, including native prairie, Big Woods, and oak savanna ~ *Monitoring will take place with the base level monitoring conducted by DNR staff and staff from other agencies/NGOs.*

### Programs in the northern forest region:

- Healthy populations of endangered, threatened, and special concern species as well as more common species ~ *Monitoring will take place with the base level monitoring conducted by DNR staff and staff from other agencies/NGOs. This includes surveys such as pheasant, sharp-tailed grouse, and woodcock, which are all dependent on open areas.*

### Programs in prairie region:

- Restored and enhanced upland habitats ~ *The multi-agency/NGO Grassland Monitoring Team (GMT) has developed standardized protocols for sampling grassland vegetation and a number of the sites on this request will be sampled over the 5 year period.*

### Programs in southeast forest region:

- Healthier populations of endangered, threatened, and special concern species as well as more common species ~ *Monitoring will primarily be done through studies conducted by the DNR's Ecological and Water Resources Division of key indicator species such as timber rattlesnakes.*

## Parcels

For restoration and enhancement programs ONLY: Managers may add, delete, and substitute projects on this parcel list based upon need, readiness, cost, opportunity, and/or urgency so long as the substitute parcel/project forwards the constitutional objectives of this program in the Project Scope table of this accomplishment plan. The final accomplishment plan report will include the final parcel list.

## Parcel Information

### Sign-up Criteria?

No

### Explain the process used to identify, prioritize, and select the parcels on your list:

Parcels are identified by Area Wildlife Managers and approved by Regional Managers. Priorities are set by the Plans identified earlier in this proposal.

## Restore / Enhance Parcels

Name	County	TRDS	Acres	Est Cost	Existing Protection
Gun Lake WMA	Aitkin	04825204	180	\$96,188	Yes
Lac qui Parle WMA: Main Unit	Big Stone	12044214	40	\$30,000	Yes
Meadow Brook WMA	Cass	13531222	53	\$44,540	Yes
Four Corners WMA	Cottonwood	10332231	33	\$23,000	Yes
Lac qui Parle WMA: Main Unit	Cottonwood	10538219	200	\$200,000	Yes
Chimney Rock SNA	Dakota	11417231	5	\$14,000	Yes
Rice Lake WMA	Faribault	10427221	27	\$27,000	Yes
Choice WMA	Fillmore	10208214	70	\$56,000	Yes
Gordon W. Yeager WMA: Nelson Unit	Goodhue	10515204	100	\$180,000	Yes
Chain-O-Sloughs WMA	Lincoln	10946222	95	\$75,600	Yes
Sponsa WMA	Morrison	12831231	12	\$31,700	Yes
Whitewater WMA: Callahan Unit	Olmsted	10610201	75	\$127,600	Yes
Eden WMA	Pipestone	10546224	135	\$96,000	Yes
Liberty WMA	Polk	14745216	75	\$30,000	Yes
Chetomba Creek WMA	Renville	11637217	80	\$35,500	Yes
Hartford WMA	Todd	13033224	14	\$32,300	Yes
Long Prairie River WMA: North Unit	Todd	13133214	71	\$171,100	Yes
Bayport WMA	Washington	02920222	16	\$45,600	Yes
Bayport WMA	Washington	02920222	75	\$270,125	Yes

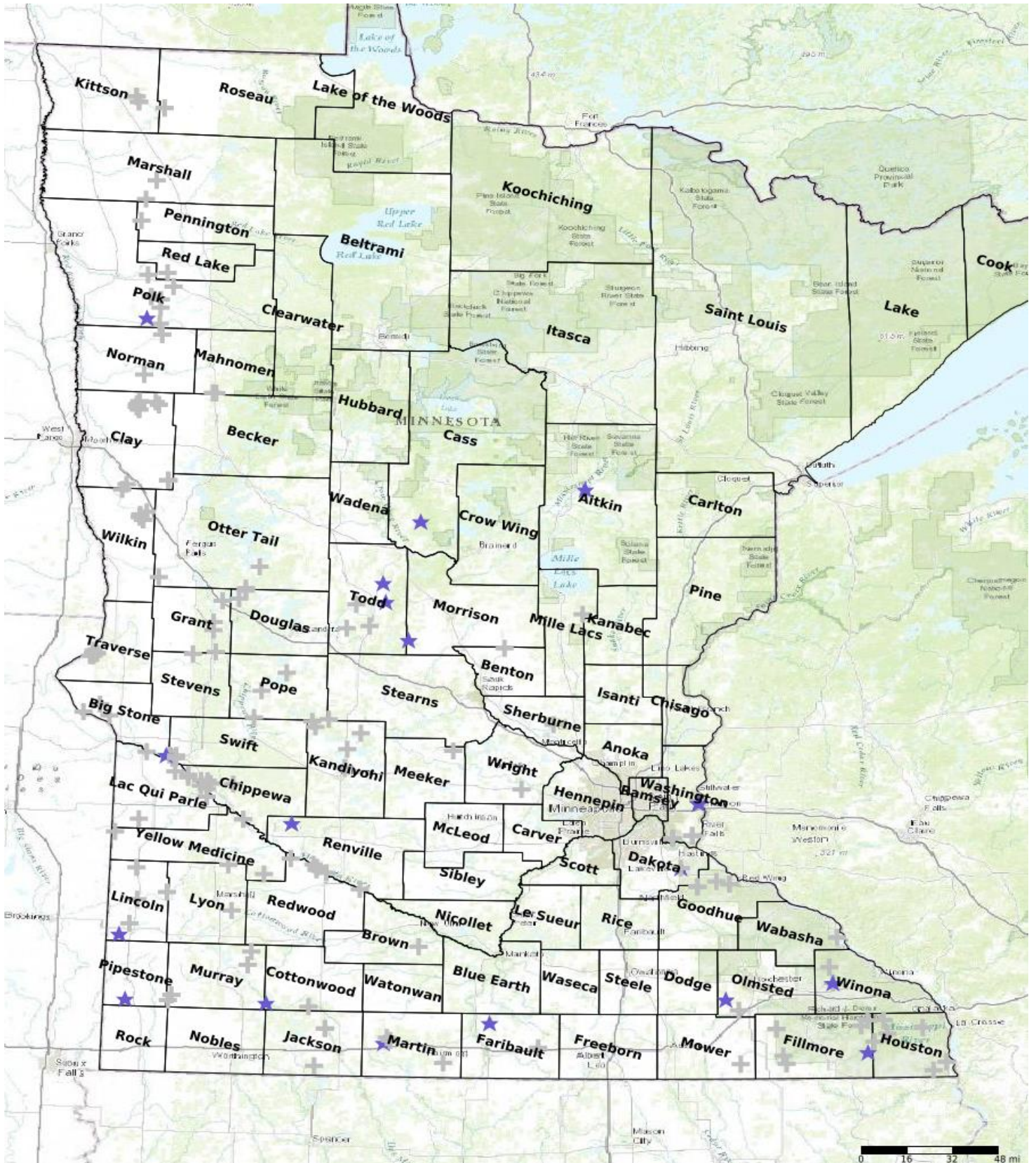
## Other Parcels

Name	County	TRDS	Acres	Est Cost	Existing Protection
Graham WMA: Main Unit	Benton	03830201	24	\$19,500	Yes
Akron 13-1 NPB	Big Stone	12044213	50	\$7,000	Yes
Lac qui Parle WMA: Main Unit	Big Stone	11943224	208	\$200,000	Yes
Foster 34-1 NPB	Big Stone	12348234	25	\$8,000	Yes
Clinton Prairie SNA	Big Stone	12347216	45	\$7,400	Yes
Johnson NPB	Big Stone	12247201	75	\$8,000	Yes
Joseph A. Tauer Prairie SNA	Brown	10931035	20	\$6,200	Yes
Lac qui Parle WMA: Controlled Hunting Zone	Chippewa	11942234	5	\$15,000	Yes
Lac qui Parle WMA: Controlled Hunting Zone	Chippewa	11842213	9	\$18,000	Yes
Lac qui Parle WMA: Controlled Hunting Zone	Chippewa	11841206	276	\$150,000	Yes
Burbank WMA	Chippewa	11840205	1,325	\$100,000	Yes
Lac qui Parle WMA: Controlled Hunting Zone	Chippewa	11842201	5	\$12,000	Yes
Lac qui Parle WMA: Controlled Hunting Zone	Chippewa	11942236	70	\$28,000	Yes
Ulen 29-1 NPB	Clay	14244229	15	\$10,000	Yes

Blue Mounds 10-1 NPB	Clay	12439210	35	\$10,000	Yes
Strand N & S NPB	Clay	14244219	25	\$10,000	Yes
Felton Prairie SNA-Shrike Unit	Clay	14245230	20	\$10,000	Yes
Felton Prairie SNA-Bicentennial Units	Clay	14145205	20	\$10,000	Yes
Ulen 29-1 NPB	Clay	14244229	15	\$15,000	Yes
Felton Prairie SNA-Dakota Skipper & County Prairie Units	Clay	14245231	35	\$10,000	Yes
Felton Prairie SNA-Dakota Skipper & County Prairie Units	Clay	14245231	5	\$18,000	Yes
Blanket Flower SNA	Clay	13744214	20	\$16,000	Yes
Blanket Flower SNA	Clay	13744214	10	\$25,000	Yes
Felton Prairie SNA-Assinaboia Unit	Clay	14245220	40	\$12,000	Yes
Felton Prairie SNA-Assinaboia Unit	Clay	14245220	10	\$25,000	Yes
Blanket Flower SNA	Clay	13744214	20	\$10,000	Yes
Felton Prairie SNA-Bicentennial Units	Clay	14145205	5	\$5,000	Yes
Bennett WMA	Cottonwood	10129206	1,737	\$80,000	Yes
String Lakes WMA	Cottonwood	10536229	542	\$103,000	Yes
Chimney Rock SNA	Dakota	11417231	7	\$6,000	Yes
Lund 21-1 NPB	Douglas	13040221	10	\$10,000	Yes
Lund 2-1 NPB	Douglas	13040202	30	\$10,000	Yes
Walnut Lake WMA	Faribault	10225201	100	\$50,000	Yes
Choice WMA	Fillmore	10212221	140	\$88,000	Yes
Pin Oak Prairie SNA	Fillmore	10412231	10	\$28,000	Yes
Cherry Grove Blind Valley SNA	Fillmore	10112203	15	\$33,500	Yes
Rushford SF complex	Fillmore	10408214	100	\$60,000	Yes
Pin Oak Prairie SNA	Fillmore	10412231	15	\$11,000	Yes
Peterson SF complex	Fillmore	10408228	100	\$50,000	Yes
Rushford Sand Barrens SNA	Fillmore	10408228	20	\$55,000	Yes
Boyd Sartell WMA: Main Unit	Freeborn	10114205	1,500	\$250,000	Yes
Spring Creek Prairie SNA	Goodhue	11315234	13	\$27,000	Yes
River Terrace Prairie SNA	Goodhue	11217201	9	\$25,000	Yes
Spring Creek Prairie SNA	Goodhue	11315234	40	\$29,000	Yes
Cannon River Turtle Preserve SNA	Goodhue	11316225	5	\$6,500	Yes
Buck Family Memorial WMA	Goodhue	10514230	80	\$120,000	Yes
River Terrace Prairie SNA	Goodhue	11217201	40	\$28,000	Yes
Pelican Lake-27-1 NPB	Grant	13041227	5	\$5,000	Yes
Pelican Lake-27-1 NPB	Grant	13041227	20	\$10,000	Yes
Olsen NPB	Grant	12841206	15	\$10,000	Yes
Elk Lake 19-1 NPB	Grant	12841219	1	\$7,000	Yes
Woodke A & B NPB	Grant	12741232	20	\$10,000	Yes
Vinegar Ridge SF complex	Houston	10407215	700	\$100,000	Yes
Reno SF complex	Houston	10104202	100	\$20,000	Yes
Yucatan WMA	Houston	10307230	30	\$77,000	Yes
Jefferson SF complex	Houston	10104219	200	\$200,000	Yes
Hokah SF complex	Houston	10405234	100	\$125,000	Yes
Wetbark SF complex	Houston	10307211	300	\$80,000	Yes
Belmont 6-1 NPB	Jackson	10335206	4	\$10,000	Yes
Belmont 6-1 NPB	Jackson	10335206	60	\$6,000	Yes
Caraway WMA: Main Unit	Jackson	10136215	77	\$70,000	Yes
Oleander WMA	Kandiyohi	12236216	47	\$66,000	Yes
Burbank WMA	Kandiyohi	12234226	42	\$130,000	Yes
Ringo-Nest WMA	Kandiyohi	12134230	31	\$50,000	Yes
Norway Lakes 5-1 NPB	Kandiyohi	12236205	40	\$9,000	Yes
Willmar WMA	Kandiyohi	12035236	29	\$30,000	Yes
Lake Bronson Parkland SNA	Kittson	16146225	10	\$8,000	Yes
Lake Bronson Parkland SNA	Kittson	16146225	40	\$12,000	Yes
Norway 1-1 NPB	Kittson	16046201	20	\$10,000	Yes
Norway 1-1 NPB	Kittson	16046201	15	\$10,000	Yes

Hantho 25-1 NPB	Lac qui Parle	11943225	20	\$7,000	Yes
Lac qui Parle WMA: Controlled Hunting Zone	Lac qui Parle	11842210	10	\$30,000	Yes
Lac qui Parle 36-1 NPB	Lac qui Parle	11842236	50	\$10,000	Yes
Agassiz 11-1 NPB	Lac qui Parle	12045211	8	\$8,000	Yes
Odden NPB	Lac qui Parle	11645216	30	\$7,000	Yes
Hantho 17-1 NPB	Lac qui Parle	11943217	25	\$7,000	Yes
Bosque WMA	Lincoln	11244236	40	\$30,300	Yes
Prairie Dell WMA	Lincoln	11345216	38	\$15,000	Yes
Sioux Lookout WMA	Lincoln	11045231	80	\$24,000	Yes
Chain-O-Sloughs WMA	Lincoln	11145216	39	\$29,250	Yes
Clifton 32-1 NPB	Lyon	11140232	1	\$7,000	Yes
Gabriel Anderson WMA	Lyon	11340206	10	\$7,500	Yes
Lake Grove 31-1 NPB	Mahnomen	14341231	20	\$10,000	Yes
Popple Grove 36-1 NPB	Mahnomen	14342236	20	\$10,000	Yes
Viking 4 NPB	Marshall	15445204	15	\$13,500	Yes
Marsh Grove 36-1 NPB	Marshall	15645236	25	\$10,000	Yes
Rooney Run WMA	Martin	10332228	230	\$10,000	Yes
Seymour Lake WMA	Martin	10332220	76	\$10,000	Yes
Alice Hamm WMA	Meeker	11826201	610	\$76,150	Yes
Kingston WMA	Meeker	12129228	30	\$40,000	Yes
Mille Lacs WMA	Mille Lacs	04125229	100	\$115,000	Yes
Dovray 7-1 NPB	Murray	10739207	25	\$6,000	Yes
Holly 17-1 NPB	Murray	10839217	15	\$5,000	Yes
Moulton 19-1 NPB	Murray	10543219	50	\$9,000	Yes
Moulton 8-1 NPB	Murray	10543208	5	\$10,000	Yes
Prairie Smoke Dunes SNA	Norman	14644217	10	\$22,000	Yes
Sandpiper Prairie SNA	Norman	14445233	40	\$12,000	Yes
Prairie Smoke Dunes SNA	Norman	14644217	40	\$12,000	Yes
Whitewater WMA: Callahan Unit	Olmsted	10610201	1,000	\$123,000	Yes
Nidaros 21-1 NPB	Otter Tail	13239221	20	\$10,000	Yes
Otter Tail Prairie SNA	Otter Tail	13144217	25	\$10,000	Yes
Wallace NPB	Otter Tail	13140235	25	\$10,000	Yes
Pembina WMA: Pennington County Unit	Pennington	15345217	20	\$50,000	Yes
Pembina Trail SNA-Foxboro Unit	Polk	14845203	10	\$8,000	Yes
Pembina Trail SNA-Foxboro Unit	Polk	14845203	40	\$12,000	Yes
Godfrey 7-1 NPB	Polk	14844207	10	\$10,000	Yes
Pembina Trail SNA-Crookston Prairie Unit	Polk	14944213	40	\$12,000	Yes
Agassiz Dunes SNA	Polk	14844230	20	\$10,000	Yes
Gentilly 27-1 NPB	Polk	15045227	20	\$10,000	Yes
Garfield 30-1 NPB	Polk	14744230	30	\$10,000	Yes
Lake Johanna 31-2 NPB	Pope	12335231	5	\$18,000	Yes
Minnewaska 1-1 NPB	Pope	12538201	10	\$8,500	Yes
Fibranz NPB	Pope	12647206	25	\$10,000	Yes
Langhei Prairie SNA	Pope	12339232	10	\$10,000	Yes
Lake Pleasant 22-1 NPB	Red Lake	15044222	10	\$10,000	Yes
Swedes Forest 20-1 NPB	Redwood	11437220	50	\$6,000	Yes
Cedar Mountain SNA	Redwood	11234214	40	\$6,100	Yes
Cedar Rock WMA: South East Unit	Redwood	11336210	87	\$90,000	Yes
River Warren Outcrops SNA	Renville	11436233	17	\$84,000	Yes
Lower Flora 3-1 NPB	Renville	11336203	10	\$6,000	Yes
Granite Prairie WMA	Renville	11335218	28	\$56,000	Yes
Two Rivers Aspen Parkland SNA	Roseau	16044217	20	\$19,000	Yes
Two Rivers Aspen Parkland SNA	Roseau	16044217	40	\$12,000	Yes
Uncas Dunes SNA	Sherburne	03427228	15	\$13,000	Yes
Verlyn Marth Memorial Prairie SNA	Stevens	12642206	1	\$7,000	Yes
Lac qui Parle WMA: Main Unit	Swift	12043220	12	\$20,000	Yes
Appleton 19-1 NPB	Swift	12043219	35	\$8,800	Yes
Appleton 19-1 NPB	Swift	12043219	2	\$5,000	Yes

Lac qui Parle WMA: Main Unit	Swift	12043217	32	\$32,000	Yes
Lasher Lake WMA	Todd	12833206	22	\$19,500	Yes
Owen-Hinz WMA	Todd	12835212	63	\$50,500	Yes
Iona WMA	Todd	13034228	66	\$27,000	Yes
Walls 8-1 NPB	Traverse	12647208	10	\$10,000	Yes
Walls 7-2 NPB	Traverse	12647207	20	\$10,000	Yes
Walls 8-1 NPB	Traverse	12647208	3	\$18,000	Yes
Walls 7-1 NPB	Traverse	12647207	25	\$10,000	Yes
Walls 18-1 NPB	Traverse	12648218	20	\$10,000	Yes
Windsor 13-1 NPB	Traverse	12648213	25	\$10,000	Yes
Whitewater WMA complex	Wabasha	10710202	200	\$100,000	Yes
Kellogg Weaver Dunes SNA	Wabasha	10909207	80	\$55,000	Yes
Kellogg Weaver Dunes SNA	Wabasha	10909207	30	\$82,000	Yes
Lost Valley Prairie SNA	Washington	02720220	10	\$9,000	Yes
Lost Valley Prairie SNA	Washington	02720220	9	\$25,000	Yes
Grey Cloud Dunes SNA	Washington	02721229	9	\$25,000	Yes
Grey Cloud Dunes SNA	Washington	02721229	20	\$15,000	Yes
St. Croix Savanna SNA	Washington	02920215	10	\$21,000	Yes
St. Croix Savanna SNA	Washington	02920215	30	\$22,000	Yes
Grey Cloud Dunes SNA	Washington	02721229	14	\$29,000	Yes
Lost Valley Prairie SNA	Washington	02720220	4	\$9,000	Yes
Bilden NPB	Wilkin	13545215	10	\$10,000	Yes
Tanberg 29-1 NPB	Wilkin	13545229	20	\$10,000	Yes
Atherton 5-1 NPB	Wilkin	13646205	10	\$10,000	Yes
Tanberg 20-1 NPB	Wilkin	13746227	5	\$18,000	Yes
Tanberg 33-1 NPB	Wilkin	13545233	5	\$18,000	Yes
Tanberg 29-2 NPB	Wilkin	13545229	25	\$10,000	Yes
Tanberg 20-1 NPB	Wilkin	13545220	25	\$10,000	Yes
Tanberg 33-1 NPB	Wilkin	13545233	25	\$10,000	Yes
Tanberg 28-1 NPB	Wilkin	13545233	10	\$10,000	Yes
Tanberg 21-1 NPB	Wilkin	13545233	10	\$10,000	Yes
Mound Springs WMA	Yellow Medicine	11546208	196	\$45,000	Yes
Posen WMA	Yellow Medicine	11339224	22	\$16,000	Yes
Stony Run 11-1 NPB	Yellow Medicine	11640211	15	\$15,000	Yes
Stony Run 11-1 NPB	Yellow Medicine	11640211	3	\$6,000	Yes



- Protect in Easement
- ▲ Protect in Fee with PILT
- Protect in Fee W/O PILT
- ★ Restore
- ✕ Enhance
- ⊕ Other

**Parcel Map**  
**DNR Grassland Phase XIII**  
**(Data Generated From Parcel List)**



## Lessard-Sams Outdoor Heritage Council

### Comparison Report

**Program Title:** ML 2021 - DNR Grassland Phase XIII

**Organization:** DNR

**Manager:** Greg Hoch

### Budget

**Requested Amount:** \$7,104,000

**Appropriated Amount:** \$3,534,000

**Percentage:** 49.75%

Item	Total Requested		Total Appropriated		Percentage of Request	
	Requested	Leverage	Appropriated	Leverage	Percent of Request	Percent of Leverage
Personnel	\$817,000	-	\$397,500	-	48.65%	-
Contracts	\$4,849,200	-	\$2,423,300	-	49.97%	-
Fee Acquisition w/ PILT	-	-	-	-	-	-
Fee Acquisition w/o PILT	-	-	-	-	-	-
Easement Acquisition	-	-	-	-	-	-
Easement Stewardship	-	-	-	-	-	-
Travel	\$284,300	-	\$123,400	-	43.4%	-
Professional Services	-	-	-	-	-	-
Direct Support Services	\$159,800	-	\$85,200	-	53.32%	-
DNR Land Acquisition Costs	-	-	-	-	-	-
Capital Equipment	-	-	-	-	-	-
Other Equipment/Tools	\$13,000	-	\$5,600	-	43.08%	-
Supplies/Materials	\$980,700	-	\$499,000	-	50.88%	-
DNR IDP	-	-	-	-	-	-
<b>Grand Total</b>	<b>\$7,104,000</b>	<b>-</b>	<b>\$3,534,000</b>	<b>-</b>	<b>49.75%</b>	<b>-</b>

### How will this program accommodate the reduced appropriation recommendation from the original proposed requested amount?

This request consists of multiple projects. The original list will be evaluated and outcomes will be proportionately scaled.

## Output

### Acres by Resource Type (Table 1)

Type	Total Proposed	Total in AP	Percentage of Proposed
Restore	1,315	650	49.43%
Protect in Fee with State PILT Liability	0	-	-
Protect in Fee w/o State PILT Liability	0	-	-
Protect in Easement	0	-	-
Enhance	11,878	5,876	49.47%

### Total Requested Funding by Resource Type (Table 2)

Type	Total Proposed	Total in AP	Percentage of Proposed
Restore	\$708,000	\$351,200	49.6%
Protect in Fee with State PILT Liability	-	-	-
Protect in Fee w/o State PILT Liability	-	-	-
Protect in Easement	-	-	-
Enhance	\$6,396,000	\$3,182,800	49.76%

### Acres within each Ecological Section (Table 3)

Type	Total Proposed	Total in AP	Percentage of Proposed
Restore	1,315	650	49.43%
Protect in Fee with State PILT Liability	0	-	-
Protect in Fee w/o State PILT Liability	0	-	-
Protect in Easement	0	-	-
Enhance	11,878	5,876	49.47%

### Total Requested Funding within each Ecological Section (Table 4)

Type	Total Proposed	Total in AP	Percentage of Proposed
Restore	\$708,000	\$351,200	49.6%
Protect in Fee with State PILT Liability	-	-	-
Protect in Fee w/o State PILT Liability	-	-	-
Protect in Easement	-	-	-
Enhance	\$6,396,000	\$3,182,800	49.76%