



Lessard-Sams Outdoor Heritage Council

Laws of Minnesota 2021 Accomplishment Plan

General Information

Date: 12/11/2020

Project Title: Mississippi Headwaters Habitat Corridor Project, Phase 6

Funds Recommended: \$2,901,000

Legislative Citation: ML 2021, Ch. XX, Art. 1, Sec. 2, subd.

Appropriation Language:

Manager Information

Manager's Name: Tim Terrill

Title:

Organization: Mississippi Headwaters Board

Address: 322 Laurel St., Suite 11

City: Brainerd, MN 56401

Email: timt@mississippiheadwaters.org

Office Number: 218-824-1189

Mobile Number:

Fax Number:

Website:

Location Information

County Location(s): Aitkin, Cass, Crow Wing, Hubbard and Itasca.

Eco regions in which work will take place:

- Northern Forest
- Forest / Prairie Transition

Activity types:

- Protect in Easement
- Protect in Fee

Priority resources addressed by activity:

- Wetlands
- Forest

- Habitat

Narrative

Abstract

In Phase 6, The Mississippi Headwaters Board in partnership with The Trust for Public Land and BWSR assisted by 8 County SWCDs will permanently protect an additional 1,235 acres of critical fish and wildlife habitat along the first 400 miles of the Mississippi River, its major tributaries, and 9 headwaters lakes. Previous phases have already protected 3,441 acres and 31 miles of shoreland using fee title acquisitions and conservation easements on priority lands to create/expand protected contiguous aquatic and wildlife habitat corridors and reduce forest fragmentation to benefit fish, game and non-game wildlife, and migratory waterfowl.

Design and Scope of Work

This Phase will continue to address current and anticipated habitat protection opportunities along the first 400 miles of the Mississippi River Headwaters, its major tributaries and 9 headwaters lakes. To date, 3,441 acres and 31 miles of river shoreland have been permanently protected to benefit aquatic habitat, provide food and shelter for migratory waterfowl along the Mississippi Flyway, and create and enhance protected habitat corridors for game and non-game wildlife. Additionally, forest fragmentation that is detrimental to habitat protection has been reduced; public recreational opportunities for fishing, hunting, and passive recreation have been enhanced; and clean drinking water ensured for millions of Minnesotans. There is urgency to fund this Phase since previous phases through ML 18 are spent or committed to fee title acquisitions and easement projects that will protect an additional 1,000 acres and 6 miles of shoreland. There is a waiting list of 20+ landowners interested in easement participation when ML 20 funding is available on July 1, 2020.

The Mississippi River is home to a variety of game fish and its adjacent lands are home to 350+ species of animals and birds, including many species of greatest concern. Because quality privately owned lakeshores are already developed, pressure is building for development along the river corridor as people seek to live and recreate near water. This leads to fragmentation of forests that threatens habitat and water quality. Public lands adjacent to private property are in danger of losing habitat connectivity as private lands are increasingly developed resulting in destruction of wild rice beds, disruption of aquatic and upland habitat and fragmentation of forestlands, grasslands, and wetlands that dominate the headwaters.

The Mississippi Headwaters Board administers and coordinates the project. The Trust for Public Land acquires fee-title to priority lands and conveys permanent ownership to a public entity (state or local government). BWSR in partnership with 8 Soil and Water Conservation Districts completes RIM conservation easements on parcels that have been identified and prioritized through a science-based selection process. A Technical Team of project partners, DNR and BWSR representatives, and The Nature Conservancy review and approve all projects using a ranked evaluation of habitat qualities, urgency for protection, and adjacency to public or already protected lands, a factor that is important to increasing protected habitat corridors. Strong local government involvement is unique to this project. For fee-title acquisitions, county boards are notified early to seek approval and before closing on an acquisition the Board is again asked for final approval. Education sessions on easements have been conducted informally with county commissioners. This process has enhanced local government support and trust which has contributed to the project's success.

For additional project support, BWSR has provided \$1 million of Clean Water Funds for RIM easement acquisition recognizing multiple benefits for habitat and water quality are the outcome of permanent land protection. This funding will be used according to the same prioritization and ranking criteria as OHF-funded easements to increase protection in the Mississippi Headwaters.

How does the plan address habitats that have significant value for wildlife species of greatest conservation need, and/or threatened or endangered species, and list targeted species?

The science-based targeting described below utilizes the Minnesota Wildlife Action Network's GIS data to identify priority areas within the minor watershed of the first 400 miles of the Mississippi River or along major tributaries that have significant value for wildlife species of greatest conservation need and/or are threatened and endangered. The targeting also considered specific areas of species richness and/or biodiversity importance and areas where aquatic and terrestrial habitats have been compromised. These identified areas are the priority focus in selecting parcels for land protection.

The Wildlife Action Network was developed to help implement the 2015-2025 MN Wildlife Action Plan. Species of greatest conservation need are defined as native animals, fish, non-game and game species whose population is rare, declining, or vulnerable to decline along with species for which Minnesota has stewardship responsibility. The decline or endangerment of these species are sentinels of habitat decline, loss, and fragmentation that will ultimately affect the sustainability of populations of more common species of fish, game, and non-game wildlife in the Mississippi headwaters. In the State Wildlife Action Plan: 2015-2023 some of the most critical and/or important species (common name used) related to the purpose of this project and its geographic focus include, but are not limited to: Blandings Turtle; Gray wolf; Red Shouldered Hawk; Golden-winged Warbler; Common Loon; Trumpeter Swan; Northern Long Eared Bat; white-tailed jackrabbit, Canada Lynx, American badger, multiple species of shrew and mouse; Northern Goshawk; Boreal Owl; Northern Pintail; Evening Grosbeak; Spruce Grouse; American Kestrel; Red-headed Woodpecker; Spotted Salamander, Pickerel Frog; Sand Darter fish; Longnose Sucker; Shortjaw Cisco; Red-necked Grebe; Sora, Virginia, and Yellow Rail; American and Least Bittern and others.

Describe how the plan uses science-based targeting that leverages or expands corridors and complexes, reduces fragmentation or protects areas identified in the MN County Biological Survey:

The minor watershed of the Mississippi Headwaters (from Itasca State Park to the southern border of Morrison County) includes 7,000+ privately owned parcels greater than 20 acres, which is the minimum project size. Large complexes and corridors of public land and/or privately protected land adjacent to public land provide the essential elements of good habitat continuity as defined by the National Wildlife Federation: food, water, a place to raise their young, and different types of wildlife cover. This project focuses on creating/expanding large, contiguous wildlife habitat complexes by protecting (in fee title or easement) those parcels providing the highest opportunity for fish and wildlife habitat protection and continued forest integrity.

A science-based parcel screening tool—RAQ—is used to identify the highest priority privately owned lands that will create or enhance large protected habitat corridors and complexes. The RAQ tool scores private, forested parcels 20 acres or larger in the following manner: "R" ranks whether the parcel is riparian--next to the Mississippi river, a tributary, or a lake. "A" ranks the parcel's adjacency to existing state, county or federal land. "Q" ranks habitat quality using a number of existing data sets including the Minnesota Biological Survey, Minnesota Wildlife Action Network priorities, DNR areas of outstanding or high biodiversity, priority waterfowl lakes, DNR rare species and old growth forest data, and Audubon's important bird areas. The Nature Conservancy's multi-benefits, science-based analysis of the Upper Mississippi River Basin that identifies priority lands for protection is also considered in selecting priority parcels for conservation.

The highest value a parcel can have with the RAQ scoring is 10. Parcels with a RAQ scoring of 6 or better were identified as priority prospects for land protection, essentially narrowing the prospects from over 7,000 parcels to a more manageable priority of approximately 1,000 parcels and 300 landowners. The Trust for Public Land and the 8 SWCDs are conducting outreach to these priority landowners to ensure the highest quality habitat is protected and habitat complexes will exist for the future sustainability of critical fish and wildlife populations.

Which two sections of the Minnesota Statewide Conservation and Preservation Plan are most applicable to this project?

- H1 Protect priority land habitats
- H2 Protect critical shoreland of streams and lakes

Which two other plans are addressed in this program?

- Mississippi River Headwaters Comprehensive Plan
- Outdoor Heritage Fund: A 25 Year Framework

Which LSOHC section priorities are addressed in this program?

Forest / Prairie Transition

- Protect, enhance, and restore wild rice wetlands, shallow lakes, wetland/grassland complexes, aspen parklands, and shoreland that provide critical habitat for game and nongame wildlife

Northern Forest

- Provide access to manage habitat on landlocked public properties or protect forest land from parcelization and fragmentation through fee acquisition, conservation or access easement

Does this program include leveraged funding?

Yes

Explain the leverage:

The Trust for Public Land is providing a private match of half of their direct services cost and all travel costs. RIM acquisition credits will be used if applicable to a specific fee-title acquisition project.

Per MS 97A.056, Subd. 24, Please explain whether the request is supplanting or is a substitution for any previous funding that was not from a legacy fund and was used for the same purpose.

This request is not supplanting or a substitution for any previous Legacy funding used for the same purpose.

How will you sustain and/or maintain this work after the Outdoor Heritage Funds are expended?

For conservation easements recorded through this project, the Minnesota Board of Water and Soil Resources is responsible for maintenance, inspection and monitoring into perpetuity. They partner with the Soil and Water Conservation District in the county where the easement is recorded to carry-out the oversight and monitoring of the conservation easements. Easements are inspected annually for the first five years beginning in the year after the easement is recorded. Thereafter, on-site inspections and compliance checks are performed and reported to BWSR every three years. If a violation is noted, a non-compliance procedure is initiated. Stewardship money is appropriated to cover ongoing BWSR oversight, SWCD monitoring, and enforcement actions, if needed. Trust for Public Land is responsible for the fee-title acquisitions in this project. They acquire the land with Outdoor Heritage

Funds and then transfer ownership to the applicable public entity—either the MN DNR or a local government for permanent ownership and stewardship. The lands are then managed consistent with the public entity’s land management policies.

Actions to Maintain Project Outcomes

Year	Source of Funds	Step 1	Step 2	Step 3
2021-2024	OHF	Work with project partners and landowners to determine RIM conservation easement interest and develop a long-term fish and game habitat protection priorities	Work with BWSR and County SWCDs to conduct landowner outreach and acquire conservation easements	BWSR and SWCDs will perform ongoing on-site inspections and monitoring and enforce conditions of the recorded easement into perpetuity
2021-2024	OHF	Work with project partners and landowners to determine interest in a fee-title acquisition and seek state or local government permanent land ownership.	The Trust for Public Land will acquire parcels for fee-title acquisition (with or without PILT) and transfer to the appropriate public entity.	Permanent public entity owners of acquired lands (state or local government) will follow the monitoring and land management policies of their organization.
2021-2024	OHF	Work with project partners to determine fish and game habitat protection priorities; develop tools for prioritizing lands for acquisition (fee title or easement); and develop/ maintain trusting relationships with local government for program support.	The Mississippi Headwaters Board (MHB) provides project coordination among project partners and other supporting organizations, including responsibility for status reports, outreach assistance to SWCDs, developing prioritization tools for project selection, facilitation of regular meetings of the Project Technical Committee to review and approve participating landowner projects, and project representation to regional conservation collaborative efforts. MHB also promotes ongoing relationships and training as needed for the 8 Headwaters County Boards.	-

Activity Details

Requirements

If funded, this program will meet all applicable criteria set forth in MS 97A.056?

Yes

Will county board or other local government approval be formally sought prior to acquisition, per 97A.056 subd 13(j)?**

Yes

Is the land you plan to acquire (fee title) free of any other permanent protection?

Yes

Is the land you plan to acquire (easement) free of any other permanent protection?

Yes

Who will manage the easement?

Land that is in easement will be maintained by the landowner and will be enrolled in a scheduled monitoring program by the County Soil & Water Conservation District under supervision of BWSR.

Who will be the easement holder?

The Minnesota Board of Water and Soil Resources (BWSR)

What is the anticipated number of easements (range is fine) you plan to accomplish with this appropriation?

Approximately 20 easements ; the actual number will depend on the cost of easements.

Land Use

Will there be planting of any crop on OHF land purchased or restored in this program?

No

Is this land currently open for hunting and fishing?

No

Will the land be open for hunting and fishing after completion?

Yes

Describe any variation from the State of Minnesota regulations:

Land acquired by The Trust for Public Land and conveyed to the MN DNR or a local government will fall under the specific entity's management plans that allow for public hunting and fishing opportunities.

Who will eventually own the fee title land?

- State of MN
- County

Land acquired in fee will be designated as a:

- WMA
- County Forest
- State Forest
- AMA

What is the anticipated number of closed acquisitions (range is fine) you plan to accomplish with this appropriation?

2-3 acquisitions depending on the fee-title cost of acquisition.

Will the eased land be open for public use?

No

Are there currently trails or roads on any of the proposed acquisitions?

No

Will new trails or roads be developed or improved as a result of the OHF acquisition?

Yes

Describe the types of trails or roads and the allowable uses:

For conservation easements, there could be a potential for new trails to be developed (though uncommon) if they contribute to easement maintenance or benefit the easement site (i.e. firebreaks, berm maintenance, etc.). TPL is not aware of any trails or roads on any of the acquisitions on the parcel list nor are any new trails planned.

How will maintenance and monitoring be accomplished?

Land that is in easement will be maintained by the landowner and will be enrolled in a scheduled monitoring program by the County Soil & Water Conservation District under supervision of BWSR. Land that is acquired by fee-title will follow the land maintenance and monitoring plans of the public entity that has final ownership--either the MN DNR or a local government.

Will the acquired parcels be restored or enhanced within this appropriation?

No

Will the land that you acquire (fee or easement) be restored or enhanced within this program's funding and availability?

No

Explain how, when, and source of the R/E work:

Timeline

Activity Name	Estimated Completion Date
TPL does landowner outreach, negotiates with committed landowners, seeks final ownership (state or local government), see approval from local government, conducts due diligence on the property, acquires property, conveys to final landowner.	2024
SWCDs do landowner outreach according to established parcel priorities, works with landowner to submit easement application and complete the easement, records the final easement.	2024
BWSR approves and processes landowner applications that have been approved by the Project Technical Committee, responsible for ongoing monitoring of completed easements. diligence,	2024; stewardship ongoing
MHB provides project administration and coordinator, assists with parcel prioritization tool and outreach, does	2024

project reporting.	
Under contract to BWSR, SWCDs do annual monitoring of acquired easements.	Ongoing
Final owners (state or LGU) of acquired fee-title lands do ongoing maintenance and monitoring of lands according to their respect management policies.	Ongoing

Date of Final Report Submission: 11/01/2024

Budget

Budget reallocations up to 10% do not require an amendment to the Accomplishment Plan.

Grand Totals Across All Partnerships

Item	Funding Request	Antic. Leverage	Leverage Source	Total
Personnel	\$290,000	-	-	\$290,000
Contracts	\$103,300	-	-	\$103,300
Fee Acquisition w/ PILT	\$1,107,000	-	-	\$1,107,000
Fee Acquisition w/o PILT	\$100,000	-	-	\$100,000
Easement Acquisition	\$1,018,000	-	-	\$1,018,000
Easement Stewardship	\$150,000	-	-	\$150,000
Travel	\$2,500	\$5,000	-, Private	\$7,500
Professional Services	\$37,000	-	-	\$37,000
Direct Support Services	\$42,500	\$25,500	-, Private	\$68,000
DNR Land Acquisition Costs	\$20,000	-	-	\$20,000
Capital Equipment	-	-	-	-
Other Equipment/Tools	\$3,600	-	-	\$3,600
Supplies/Materials	\$1,100	-	-	\$1,100
DNR IDP	\$26,000	-	-	\$26,000
Grand Total	\$2,901,000	\$30,500	-	\$2,931,500

Partner: BWSR

Totals

Item	Funding Request	Antic. Leverage	Leverage Source	Total
Personnel	\$180,000	-	-	\$180,000
Contracts	\$48,300	-	-	\$48,300
Fee Acquisition w/ PILT	-	-	-	-
Fee Acquisition w/o PILT	-	-	-	-
Easement Acquisition	\$1,018,000	-	-	\$1,018,000
Easement Stewardship	\$150,000	-	-	\$150,000
Travel	\$2,500	-	-	\$2,500
Professional Services	-	-	-	-
Direct Support Services	\$17,000	-	-	\$17,000
DNR Land Acquisition Costs	-	-	-	-
Capital Equipment	-	-	-	-
Other Equipment/Tools	\$3,600	-	-	\$3,600
Supplies/Materials	\$1,100	-	-	\$1,100
DNR IDP	-	-	-	-
Grand Total	\$1,420,500	-	-	\$1,420,500

Personnel

Position	Annual FTE	Years Working	Funding Request	Antic. Leverage	Leverage Source	Total
Easement Processing	0.6	3.0	\$126,000	-	-	\$126,000
Program Management	0.15	3.0	\$54,000	-	-	\$54,000

Partner: The Trust for Public Land

Totals

Item	Funding Request	Antic. Leverage	Leverage Source	Total
Personnel	\$90,000	-	-	\$90,000
Contracts	\$15,000	-	-	\$15,000
Fee Acquisition w/ PILT	\$1,107,000	-	-	\$1,107,000
Fee Acquisition w/o PILT	\$100,000	-	-	\$100,000
Easement Acquisition	-	-	-	-
Easement Stewardship	-	-	-	-
Travel	-	\$5,000	Private	\$5,000
Professional Services	\$37,000	-	-	\$37,000
Direct Support Services	\$25,500	\$25,500	Private	\$51,000
DNR Land Acquisition Costs	\$20,000	-	-	\$20,000
Capital Equipment	-	-	-	-
Other Equipment/Tools	-	-	-	-
Supplies/Materials	-	-	-	-
DNR IDP	\$26,000	-	-	\$26,000
Grand Total	\$1,420,500	\$30,500	-	\$1,451,000

Personnel

Position	Annual FTE	Years Working	Funding Request	Antic. Leverage	Leverage Source	Total
Protection & Legal Staff	0.19	3.0	\$90,000	-	-	\$90,000

Partner: Mississippi Headwaters Board

Totals

Item	Funding Request	Antic. Leverage	Leverage Source	Total
Personnel	\$20,000	-	-	\$20,000
Contracts	\$40,000	-	-	\$40,000
Fee Acquisition w/ PILT	-	-	-	-
Fee Acquisition w/o PILT	-	-	-	-
Easement Acquisition	-	-	-	-
Easement Stewardship	-	-	-	-
Travel	-	-	-	-
Professional Services	-	-	-	-
Direct Support Services	-	-	-	-
DNR Land Acquisition Costs	-	-	-	-
Capital Equipment	-	-	-	-
Other Equipment/Tools	-	-	-	-
Supplies/Materials	-	-	-	-
DNR IDP	-	-	-	-
Grand Total	\$60,000	-	-	\$60,000

Personnel

Position	Annual FTE	Years Working	Funding Request	Antic. Leverage	Leverage Source	Total
Project Administrator	0.1	3.0	\$20,000	-	-	\$20,000

Amount of Request: \$2,901,000

Amount of Leverage: \$30,500

Leverage as a percent of the Request: 1.05%

DSS + Personnel: \$332,500

As a % of the total request: 11.46%

Easement Stewardship: \$150,000

As a % of the Easement Acquisition: 14.73%

How will this program accommodate the reduced appropriation recommendation from the original proposed requested amount?

Administration costs will remain the same as the proposed request. The number of easements acquired and fee-title acquisitions will be reduced proportionate to the reduced appropriation.

Describe and explain leverage source and confirmation of funds:

The Trust for Public Land (TPL) is providing one-half of Direct Support Services cost and all in-state travel costs as privately funded leverage. Additionally, TPL will attempt to leverage fee-acquisition with partial donations of the appraised value of parcel(s).

Personnel

Has funding for these positions been requested in the past?

Yes

Please explain the overlap of past and future staffing and position levels previously received and how that is coordinated over multiple years?

For MHB, the FTE listed for project administration is consistent with funds spent in the appropriations completed and those in process; contract project coordination is provided by the same contractor and is consistent with what has been spent in the past. Only funds needed to ensure program success are spent. For TPL the FTEs listed in the proposal are an estimate of the personnel time required to produce the grant deliverable put forward in this proposal. An array of staff draw from these funds for legal work, negotiating with landowners, crafting of acquisition documents, coordinating with agency partners, and managing the grant. We use only those personnel funds necessary to achieve the goals of the grant. For BWSR, this is Phase 5 of an ongoing program; these funds will pay for staff time spent on new easements associated with this phase.

Contracts

What is included in the contracts line?

Funding for contracts with a Project Coordinator (MHB), Landowner Outreach (MHB), easement processing by SWCDs (BWSR), and potential site clean-up and initial restoration activities (TPL).

Fee Acquisition

What is the anticipated number of fee title acquisition transactions?

2-3 fee title acquisitions depending on the cost of the acquisition

Easement Stewardship

What is the number of easements anticipated, cost per easement for stewardship, and explain how that amount is calculated?

23 easements are anticipated with this appropriation; the number may vary depending on the cost of easements. Perpetual monitoring and enforcement costs have been calculated at \$6,500 per easement. This value is based on using local SWCD staff for monitoring and landowner relations and existing enforcement authorities. The amount listed for Easement Stewardship covers costs of the SWCD regular monitoring, BWSR oversight, and any enforcement necessary.

Travel

Does the amount in the travel line include equipment/vehicle rental?

No

Explain the amount in the travel line outside of traditional travel costs of mileage, food, and lodging

None

I understand and agree that lodging, meals, and mileage must comply with the current MMB Commissioner Plan:

Yes

Direct Support Services

How did you determine which portions of the Direct Support Services of your shared support services is direct to this program?

The Trust for Public Land's (TPL) DSS request is based upon our federally approved indirect rate, which has been approved by the DNR.

This rate does not include costs that are included in other budget lines. 50% of these costs are requested from the grant and 50% is contributed as leverage. BWSR calculates direct support services costs that are directly related to and necessary for each request based on the type of work being done.

Other Equipment/Tools

Give examples of the types of Equipment and Tools that will be purchased?

Signs, posts, and hardware

Federal Funds

Do you anticipate federal funds as a match for this program?

No

Output Tables

Acres by Resource Type (Table 1)

Type	Wetland	Prairie	Forest	Habitat	Total Acres
Restore	-	-	-	-	-
Protect in Fee with State PILT Liability	-	-	-	288	288
Protect in Fee w/o State PILT Liability	-	-	-	27	27
Protect in Easement	-	-	-	920	920
Enhance	-	-	-	-	-
Total	-	-	-	1,235	1,235

Total Requested Funding by Resource Type (Table 2)

Type	Wetland	Prairie	Forest	Habitat	Total Funding
Restore	-	-	-	-	-
Protect in Fee with State PILT Liability	-	-	-	\$1,329,100	\$1,329,100
Protect in Fee w/o State PILT Liability	-	-	-	\$121,400	\$121,400
Protect in Easement	-	-	-	\$1,450,500	\$1,450,500
Enhance	-	-	-	-	-
Total	-	-	-	\$2,901,000	\$2,901,000

Acres within each Ecological Section (Table 3)

Type	Metro/Urban	Forest/Prairie	SE Forest	Prairie	N. Forest	Total Acres
Restore	-	-	-	-	-	-
Protect in Fee with State PILT Liability	-	-	-	-	288	288
Protect in Fee w/o State PILT Liability	-	-	-	-	27	27
Protect in Easement	-	75	-	-	845	920
Enhance	-	-	-	-	-	-
Total	-	75	-	-	1,160	1,235

Total Requested Funding within each Ecological Section (Table 4)

Type	Metro/Urban	Forest/Prairie	SE Forest	Prairie	N. Forest	Total Funding
Restore	-	-	-	-	-	-
Protect in Fee with State PILT Liability	-	-	-	-	\$1,329,100	\$1,329,100
Protect in Fee w/o State PILT Liability	-	-	-	-	\$121,400	\$121,400
Protect in Easement	-	\$111,000	-	-	\$1,339,500	\$1,450,500
Enhance	-	-	-	-	-	-
Total	-	\$111,000	-	-	\$2,790,000	\$2,901,000

Average Cost per Acre by Resource Type (Table 5)

Type	Wetland	Prairie	Forest	Habitat
Restore	-	-	-	-
Protect in Fee with State PILT Liability	-	-	-	\$4,614
Protect in Fee w/o State PILT Liability	-	-	-	\$4,496
Protect in Easement	-	-	-	\$1,576
Enhance	-	-	-	-

Average Cost per Acre by Ecological Section (Table 6)

Type	Metro/Urban	Forest/Prairie	SE Forest	Prairie	N. Forest
Restore	-	-	-	-	-
Protect in Fee with State PILT Liability	-	-	-	-	\$4,614
Protect in Fee w/o State	-	-	-	-	\$4,496

PILT Liability					
Protect in Easement	-	\$1,480	-	-	\$1,585
Enhance	-	-	-	-	-

Target Lake/Stream/River Feet or Miles

6 miles

Outcomes

Programs in forest-prairie transition region:

- Rivers and streams provide corridors of habitat including intact areas of forest cover in the east and large wetland/upland complexes in the west ~ *Forestlands protected are measured in the number of acres of forestland protected by either fee-title or easement and miles of protected shoreland. For fee-title acquisitions, the evaluation in in the ongoing maintenance of the forest and shoreland according to the final owner's (state or local government) management plans and continued monitoring. For conservation easements, a management plan is part of the easement. Once recorded, BWSR with assistance from the County SWCD does annual monitoring to insure the management plan is not being violated.*

Programs in the northern forest region:

- Forestlands are protected from development and fragmentation ~ *Forestlands protected are measured in the number of acres of forestland protected by either fee-title or easement and miles of protected forested shorelands. For fee-title acquisitions, the evaluation in in the ongoing maintenance of the forest according to the final owner's (state or local government) management plans and continued monitoring. For conservation easements, a management plan is part of the easement. Once recorded, BWSR with assistance from the County SWCD does annual monitoring to insure the management plan is not being violated.*

Parcels

For restoration and enhancement programs ONLY: Managers may add, delete, and substitute projects on this parcel list based upon need, readiness, cost, opportunity, and/or urgency so long as the substitute parcel/project forwards the constitutional objectives of this program in the Project Scope table of this accomplishment plan. The final accomplishment plan report will include the final parcel list.

Parcel Information

Sign-up Criteria?

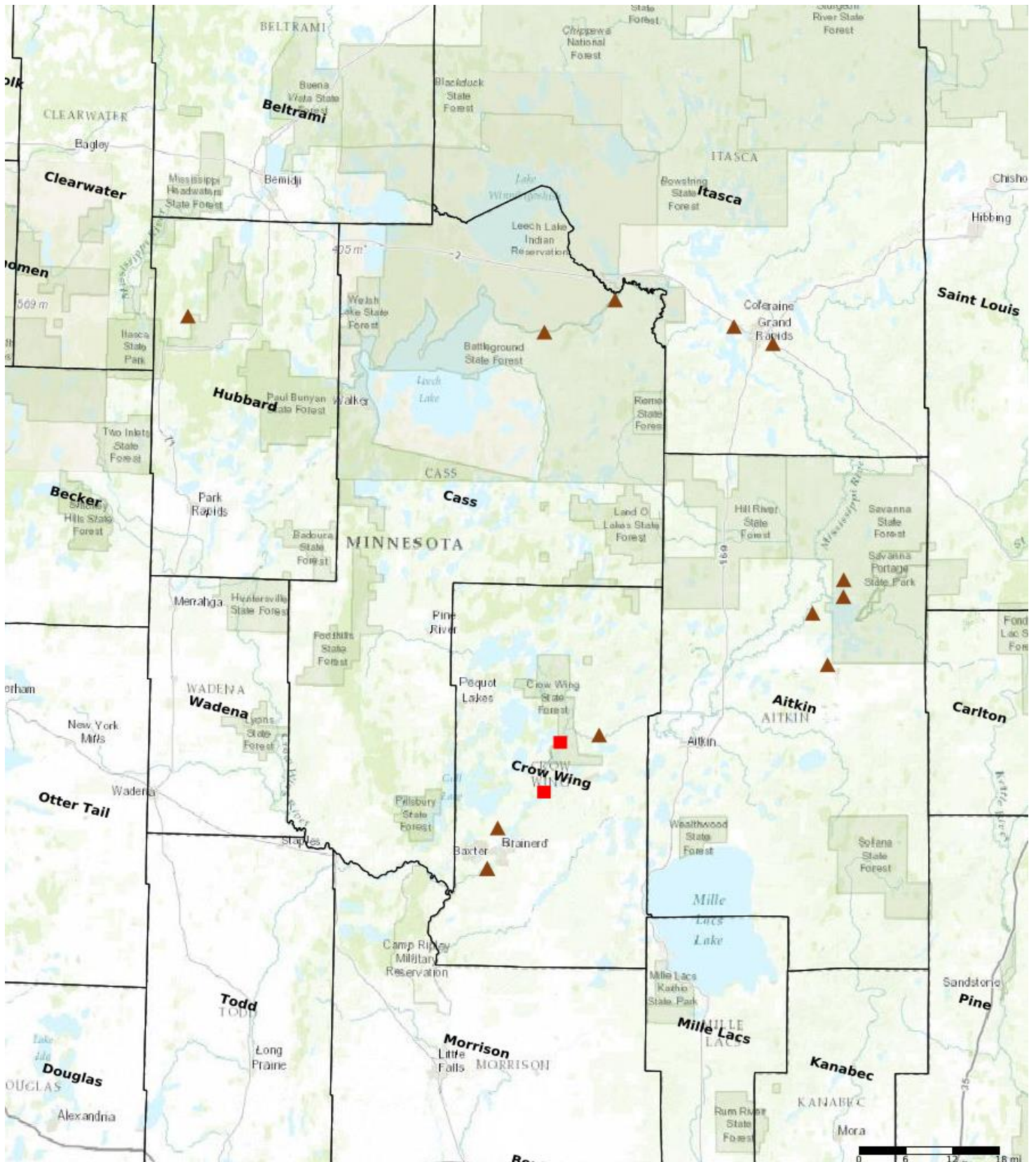
No

Explain the process used to identify, prioritize, and select the parcels on your list:

Parcels were selected based on one or a combination of the following sources: the GIS-science based screening for priority parcels, county land department requests, DNR interest in WMA for State Forest additions or acquisitions, and landowner interest.

Protect Parcels

Name	County	TRDS	Acres	Est Cost	Existing Protection
Aitkin Lake	Aitkin	05023217	151	\$850,000	No
Wold WMA Addition	Aitkin	04924203	391	\$860,000	No
Big Sandy River	Aitkin	04824201	189	\$380,000	No
Big Sandy	Aitkin	05023229	283	\$900,000	No
Leech River	Cass	14426213	105	\$160,000	No
Leech River	Cass	14327204	214	\$300,000	No
Mississippi River-Buffalo North	Crow Wing	04431203	782	\$3,128,000	No
Brainerd Forest	Crow Wing	13427204	28	\$130,000	No
Crow Wing County Forest Addition	Crow Wing	04729219	22	\$75,000	No
Mississippi River-Buffalo South	Crow Wing	04431203	171	\$680,000	No
Indian Jack WMA Addition	Crow Wing	13626234	35	\$130,000	No
Gilbert Lake AMA Addition	Crow Wing	13428228	65	\$800,000	No
LaSalle Creek SNA	Hubbard	14435235	350	\$800,000	No
La Prairie	Itasca	05525226	115	\$460,000	No
Bass Brook WMA Addition	Itasca	05526213	46	\$184,000	No



- Protect in Easement
- ▲ Protect in Fee with PILT
- Protect in Fee W/O PILT
- ★ Restore
- ✕ Enhance
- ⊕ Other

Parcel Map
Mississippi Headwaters Habitat Corridor Project,
Phase 6
(Data Generated From Parcel List)



Lessard-Sams Outdoor Heritage Council

Comparison Report

Program Title: ML 2021 - Mississippi Headwaters Habitat Corridor Project, Phase 6

Organization: Mississippi Headwaters Board

Manager: Tim Terrill

Budget

Requested Amount: \$6,912,100

Appropriated Amount: \$2,901,000

Percentage: 41.97%

Item	Total Requested		Total Appropriated		Percentage of Request	
	Requested	Leverage	Appropriated	Leverage	Percent of Request	Percent of Leverage
Personnel	\$462,600	-	\$290,000	-	62.69%	-
Contracts	\$195,000	-	\$103,300	-	52.97%	-
Fee Acquisition w/ PILT	\$3,065,000	\$100,000	\$1,107,000	-	36.12%	0.0%
Fee Acquisition w/o PILT	\$205,000	-	\$100,000	-	48.78%	-
Easement Acquisition	\$2,235,200	-	\$1,018,000	-	45.54%	-
Easement Stewardship	\$325,000	-	\$150,000	-	46.15%	-
Travel	\$5,300	\$5,000	\$2,500	\$5,000	47.17%	100.0%
Professional Services	\$120,000	-	\$37,000	-	30.83%	-
Direct Support Services	\$89,200	\$58,100	\$42,500	\$25,500	47.65%	43.89%
DNR Land Acquisition Costs	\$80,000	-	\$20,000	-	25.0%	-
Capital Equipment	-	-	-	-	-	-
Other Equipment/Tools	\$7,500	-	\$3,600	-	48.0%	-
Supplies/Materials	\$2,300	-	\$1,100	-	47.83%	-
DNR IDP	\$120,000	-	\$26,000	-	21.67%	-
Grand Total	\$6,912,100	\$163,100	\$2,901,000	\$30,500	41.97%	18.7%

How will this program accommodate the reduced appropriation recommendation from the original proposed requested amount?

Administration costs will remain the same as the proposed request. The number of easements acquired and fee-title acquisitions will be reduced proportionate to the reduced appropriation.

Output

Acres by Resource Type (Table 1)

Type	Total Proposed	Total in AP	Percentage of Proposed
Restore	0	-	-
Protect in Fee with State PILT Liability	820	288	35.12%
Protect in Fee w/o State PILT Liability	55	27	49.09%
Protect in Easement	2,000	920	46.0%
Enhance	0	-	-

Total Requested Funding by Resource Type (Table 2)

Type	Total Proposed	Total in AP	Percentage of Proposed
Restore	-	-	-
Protect in Fee with State PILT Liability	\$3,642,100	\$1,329,100	36.49%
Protect in Fee w/o State PILT Liability	\$240,000	\$121,400	50.58%
Protect in Easement	\$3,030,000	\$1,450,500	47.87%
Enhance	-	-	-

Acres within each Ecological Section (Table 3)

Type	Total Proposed	Total in AP	Percentage of Proposed
Restore	0	-	-
Protect in Fee with State PILT Liability	820	288	35.12%
Protect in Fee w/o State PILT Liability	55	27	49.09%
Protect in Easement	2,000	920	46.0%
Enhance	0	-	-

Total Requested Funding within each Ecological Section (Table 4)

Type	Total Proposed	Total in AP	Percentage of Proposed
Restore	-	-	-
Protect in Fee with State PILT Liability	\$3,642,100	\$1,329,100	36.49%
Protect in Fee w/o State PILT Liability	\$240,000	\$121,400	50.58%
Protect in Easement	\$3,030,000	\$1,450,500	47.87%
Enhance	-	-	-