



## Lessard-Sams Outdoor Heritage Council

---

### Laws of Minnesota 2021 Accomplishment Plan

#### General Information

**Date:** 12/11/2020

**Project Title:** Fisheries Habitat Protection on Strategic North Central Minnesota Lakes - Phase VII

**Funds Recommended:** \$2,838,000

**Legislative Citation:** ML 2021, Ch. XX, Art. 1, Sec. 2, subd.

**Appropriation Language:**

#### Manager Information

**Manager's Name:** Kathy DonCarlos

**Title:** Land Conservation Coordinator

**Organization:** Northern Waters Land Trust

**Address:** 800 Minnesota Ave W PO Box 124

**City:** Walker, MN 56484

**Email:** kathyd@northernwaterslandtrust.org

**Office Number:** 218-547-4510

**Mobile Number:**

**Fax Number:**

**Website:**

#### Location Information

**County Location(s):** Aitkin, Crow Wing, Cass and Hubbard.

**Eco regions in which work will take place:**

- Northern Forest

**Activity types:**

- Protect in Easement
- Protect in Fee

**Priority resources addressed by activity:**

- Forest
- Habitat

## Narrative

### Abstract

The Northern Waters Land Trust (NWLTL) and Minnesota Land Trust (MLT) will protect critical fish habitat within 48 tullibee "refuge" lakes and their minor watersheds by securing conservation easements and fee title acquisitions. These efforts are prioritized toward the 15 highest priority tullibee refuge lakes. Through this Fisheries Habitat Protection program, NWLTL and MLT are working to protect 75% of each targeted watershed, a measure that provides a high probability of maintaining clean water and healthy lake ecosystems. We will permanently protect approximately 615 acres and 0.6 miles of shoreline through this grant.

### Design and Scope of Work

Sustaining a strong angling heritage in North Central Minnesota (along with the local economy it drives) revolves largely around protecting fisheries habitat. Resurging shoreland development pressures and looming climate change are direct threats to the ecology of Minnesota's lakes. Fisheries research has shown that healthy watersheds with intact forests are fundamental to sustaining good fish habitat over the long term; achieving a 75% protection goal for a lake's watershed ensures a highly resilient and healthy lake ecosystem.

Our protection efforts are focused on tullibee (aka cisco), a preferred forage fish of walleye, northern pike, muskellunge and lake trout. They require cold, well oxygenated waters, a condition most common in lakes with deep water and healthy watersheds. Minnesota DNR Fisheries researchers studied tullibee lakes and designated 68 lakes in Minnesota as the primary "refuge lakes" for tullibee that need protection. Our four county area (Aitkin, Cass, Crow Wing, Hubbard) includes 48 of these tullibee refuges. We are prioritizing fifteen of these lakes and their minor watersheds. Many are Minnesota's premier recreational lakes.

The Clean Water Critical Habitat Technical Committee evaluated all tullibee lakes in our project area and prioritized 15 lakes and their minor watersheds for action. In assigning priorities, the committee considered: (1) ecological value of the lake, (2) percent of the minor watershed currently protected, (3) number of parcels in the watershed greater than 20 acres in size, (4) partner organizations available for advising on outreach efforts, and (5) investment by other agencies and organizations to protect lands and watersheds.

Due to the high level of interest in the program and its great success to date, we are applying for a Phase VII of this effort. In this phase, we will protect 615 strategically important acres of land through conservation easements and fee title acquisitions. Program partners will include County Soil & Water Districts, MNDNR Fisheries, Minnesota Land Trust and NWLTL. This team will conduct outreach to potential landowners and help evaluate the projects to assure we are prioritizing those projects with the greatest conservation outcomes. In addition, to ensure the best conservation return on the state's investment, landowner willingness to donate a portion of the easement value will be a key component of the parcel's evaluation. MLT will hold the easements.

The proposed fee-title acquisition totals 281 acres. Potential parcels include properties on or within the watersheds of Wabedo Lake, Wabedo/Little Boy/Louise Lakes (which are targeted as a part of a complex to protect for this minor watershed), Washburn Lake, Girl/Woman Lake, and Roosevelt Lake all in Cass County. The parcels would be conveyed to either Cass County as managed forest lands or DNR as Aquatic Management Areas.

### **How does the plan address habitats that have significant value for wildlife species of greatest conservation need, and/or threatened or endangered species, and list targeted species?**

Tullibee (aka cisco) is the preferred forage fish for walleye, northern pike, muskellunge and lake trout. They require cold, well oxygenated waters - a condition most common in lakes with deep water and healthy watersheds.

Tullibee populations are the "canary in the coal mine" for three significant threats to Minnesota's sport fisheries: shoreland development, watershed health and climate warming. Deep, cold water lakes with high quality, well-oxygenated waters and natural, undisturbed land cover along the shorelines and within their watersheds will have the best chance to sustain tullibee populations in the face of these threats and will serve as a "refuge" for the tullibee if annual temperatures increase.

Minnesota DNR Fisheries Research scientists studied tullibee lakes and designated 68 lakes in Minnesota as primary "refuge lakes" for tullibee that need protection. Forty-eight of these lakes and their minor watersheds are located in Crow Wing, Aitkin, Cass and Hubbard counties. These lakes are premier recreational and sport fishery lakes. Fisheries research has shown that healthy watersheds with intact forest are fundamental to good fish habitat. MN DNR Fisheries Habitat Plan states near shore fish habitat affected by shoreland disturbance can impact fisheries. Maintaining good water quality is critical to sustaining tullibeas as determined by the water's oxygen level and nutrient content. Lakeshore development decreases a lakes ability to function as a healthy ecosystem for sport fish and their forage, due to increased runoff, but also through physical alternation by lakeshore owners.

### **Describe how the plan uses science-based targeting that leverages or expands corridors and complexes, reduces fragmentation or protects areas identified in the MN County Biological Survey:**

Timothy Cross and Peter Jacobson in their white paper, "Landscape factors influencing lake phosphorus concentrations across Minnesota" determined coldwater fish communities are especially vulnerable to eutrophication from increased phosphorus concentrations. Decreases in hypolimnetic oxygen concentrations have direct negative effects on fish such as tullibee that physiologically require oxygenated cold water to survive, grow and reproduce. Protection is viewed as the most cost-effective strategy when applied to watersheds where human activities have not already significantly elevated phosphorus levels.

Peter Jacobson and Mike Duval, in "Protecting Watershed of Minnesota Lakes with Private Forest Conservation Easements: A Suggested Strategy", stated that protecting the forests in these watersheds from development is critical for maintaining water quality in these lakes. While large areas of land in forested portions are under public ownership, a considerable amount is also owned by private individuals in some of our most critical lake watersheds. These parcels are increasingly being "split up" and sold. Modeling by MN DNR Fisheries research unit suggests that total phosphorus concentrations remain near natural background levels when less than 25% of a lake's watershed is disturbed. Tullibee "refuge" lakes have watersheds with less than 25% disturbed land uses and are good candidates for protection. Very deep lakes with exceptional water quality to support coldwater fish populations like tullibee were considered priorities by the report.

Minnesota DNR Fisheries researchers studied tullibee lakes and designated 68 lakes in Minnesota as the primary "refuge lakes" for tullibee. We focused our protection efforts of the highest quality tullibee lakes that will require modest to moderate levels of land protection to achieve 75% protection levels. Protecting the habitats of tullibee "refuge" lakes along the shoreline and surrounding forest lands is essential to a sustained sport fishery.

### **Which two sections of the Minnesota Statewide Conservation and Preservation Plan are most applicable to this project?**

- H1 Protect priority land habitats
- H2 Protect critical shoreland of streams and lakes

## Which two other plans are addressed in this program?

- Long Range Plan for Fisheries Management
- Other : Leech Lake River Comprehensive Watershed Management Plan (LLRCWMP)

## Which LSOHC section priorities are addressed in this program?

### Northern Forest

- Protect shoreland and restore or enhance critical habitat on wild rice lakes, shallow lakes, cold water lakes, streams and rivers, and spawning areas

## Does this program include leveraged funding?

Yes

### Explain the leverage:

This proposal includes the following funds as leverage to our OHF request: 1) Landowner donation in the amount of \$136,000 in easement value is proposed based on results obtained in previous and current OHF-funded grants; 2) Landowner, lake association and county donations in the amount of \$77,000 is proposed for fee acquisitions.

## Per MS 97A.056, Subd. 24, Please explain whether the request is supplanting or is a substitution for any previous funding that was not from a legacy fund and was used for the same purpose.

Funding procured by NWLT and MLT through funding from this Outdoor Heritage Fund proposal will not supplant or substitute any previous funding from a non-Legacy fund used for the same purpose.

## How will you sustain and/or maintain this work after the Outdoor Heritage Funds are expended?

NWLT and MLT are long standing conservation organizations that do not depend on Outdoor Heritage Funds to sustain or maintain our work. The majority of financial support for both NWLT and MLT must be raised on an annual basis. The work in this proposal allows both organizations to enhance and accelerate ongoing conservation efforts in North Central Minnesota; these grant funds will not substitute for or supplant other funding sources.

The fee-title acquisitions will be owned and managed by either Cass County or the MN DNR. The Minnesota Land Trust will hold the conservation easements acquired, which will be sustained through the best standards and practices for conservation easement stewardship. The Minnesota Land Trust is a nationally-accredited land trust with a very successful stewardship program that includes annual property monitoring, effective records management, addressing inquiries and interpretations, tracking changes in ownership, investigating potential violations and defending the easement in case of a true violation. In addition, MLT encourages landowners to undertake active ecological management of their properties, provides them with habitat management plans, and works with them over time to secure resources (expertise and funding) to undertake these activities over time.

## Actions to Maintain Project Outcomes

Year	Source of Funds	Step 1	Step 2	Step 3
2026 and in perpetuity	MLT Stewardship and Enforcement Fund	Annual monitoring of easements	Enforcement as necessary	-

## Activity Details

### Requirements

**If funded, this program will meet all applicable criteria set forth in MS 97A.056?**

Yes

**Will county board or other local government approval be formally sought\*\* prior to acquisition, per 97A.056 subd 13(j)?**

Yes

**Is the land you plan to acquire (fee title) free of any other permanent protection?**

Yes

**Is the land you plan to acquire (easement) free of any other permanent protection?**

Yes

**Who will manage the easement?**

The Minnesota Land Trust will manage the easements completed under this grant.

**Who will be the easement holder?**

The Minnesota Land Trust will be the easement holder for all easements completed under this grant.

**What is the anticipated number of easements (range is fine) you plan to accomplish with this appropriation?**

The Land Trust anticipates that 4-6 conservation easements will be completed under this grant.

### Land Use

**Will there be planting of any crop on OHF land purchased or restored in this program?**

No

**Is this land currently open for hunting and fishing?**

No

**Will the land be open for hunting and fishing after completion?**

Yes

**Describe any variation from the State of Minnesota regulations:**

All fee title acquisitions conveyed to a public agency will be open to hunting and fishing.

**Who will eventually own the fee title land?**

- County
- State of MN

**Land acquired in fee will be designated as a:**

- WMA
- AMA
- County Forest

**What is the anticipated number of closed acquisitions (range is fine) you plan to accomplish with this appropriation?**

NWLT plans for 1 - 2 fee title acquisitions.

**Will the eased land be open for public use?**

No

**Are there currently trails or roads on any of the proposed acquisitions?**

Yes

**Describe the types of trails or roads and the allowable uses:**

Most conservation easements are established on private lands, many of which have driveways, field roads and trails located on them. Often, the conservation easement permits the continued usage of established trails and roads so long as their use does not significantly impact the conservation values of the property. Creation of new roads/trails or expansion of existing ones is typically not allowed.

**Will the trails or roads remain and uses continue to be allowed after OHF acquisition?**

Yes

**How will maintenance and monitoring be accomplished?**

Existing trails and roads on easement lands are identified in the project baseline report and will be monitored annually as part of the Land Trust's stewardship and enforcement protocols. Maintenance of permitted roads/trails in accordance with the terms of the easement will be the responsibility of the landowner.

**Will new trails or roads be developed or improved as a result of the OHF acquisition?**

No

**Will the acquired parcels be restored or enhanced within this appropriation?**

No

Funds from this appropriation will not be used for restoration or enhancement.

**Will the land that you acquire (fee or easement) be restored or enhanced within this program's funding and availability?**

No

**Explain how, when, and source of the R/E work:**

MLT - We do not anticipate that R/E work will be necessary for the significant majority of lands protected through conservation easement associated with this program. If needs are evident, we will amend the accomplishment plan to accommodate for those needs.

NWLT does not anticipate that R/E funds through this grant will not be needed for fee title acquisitions.

**Timeline**

Activity Name	Estimated Completion Date
Landowner outreach, consultation, technical assistance and easement preparation	Ongoing through June 2025
Protection of 281 acres via fee acquisition; conveyance to Cass County and Department of Natural Resources	June 2025

Protection of 334 acres of targeted parcels via conservation easement.
--

June 2025
-----------

**Date of Final Report Submission:** 11/01/2025

## Budget

Budget reallocations up to 10% do not require an amendment to the Accomplishment Plan.

### Grand Totals Across All Partnerships

Item	Funding Request	Antic. Leverage	Leverage Source	Total
Personnel	\$190,000	-	-	\$190,000
Contracts	\$51,000	-	-	\$51,000
Fee Acquisition w/ PILT	\$171,000	\$17,100	Lake associations, landowners	\$188,100
Fee Acquisition w/o PILT	\$600,000	\$60,000	-, County, lake associations, landowner	\$660,000
Easement Acquisition	\$1,366,000	\$136,000	Landowner donation of easement value	\$1,502,000
Easement Stewardship	\$168,000	-	-	\$168,000
Travel	\$15,000	-	-	\$15,000
Professional Services	\$215,000	-	-	\$215,000
Direct Support Services	\$57,000	-	-	\$57,000
DNR Land Acquisition Costs	-	-	-	-
Capital Equipment	-	-	-	-
Other Equipment/Tools	-	-	-	-
Supplies/Materials	\$5,000	-	-	\$5,000
DNR IDP	-	-	-	-
<b>Grand Total</b>	<b>\$2,838,000</b>	<b>\$213,100</b>	-	<b>\$3,051,100</b>



**Partner: Northern Waters Land Trust**

**Totals**

<b>Item</b>	<b>Funding Request</b>	<b>Antic. Leverage</b>	<b>Leverage Source</b>	<b>Total</b>
Personnel	\$90,000	-	-	\$90,000
Contracts	\$15,000	-	-	\$15,000
Fee Acquisition w/ PILT	\$171,000	\$17,100	Lake associations, landowners	\$188,100
Fee Acquisition w/o PILT	\$600,000	\$60,000	County, lake associations, landowner	\$660,000
Easement Acquisition	-	-	-	-
Easement Stewardship	-	-	-	-
Travel	\$3,000	-	-	\$3,000
Professional Services	\$64,000	-	-	\$64,000
Direct Support Services	\$30,000	-	-	\$30,000
DNR Land Acquisition Costs	-	-	-	-
Capital Equipment	-	-	-	-
Other Equipment/Tools	-	-	-	-
Supplies/Materials	\$2,000	-	-	\$2,000
DNR IDP	-	-	-	-
<b>Grand Total</b>	<b>\$975,000</b>	<b>\$77,100</b>	-	<b>\$1,052,100</b>

**Personnel**

<b>Position</b>	<b>Annual FTE</b>	<b>Years Working</b>	<b>Funding Request</b>	<b>Antic. Leverage</b>	<b>Leverage Source</b>	<b>Total</b>
NWLT Land Conservation Staff	0.5	4.0	\$90,000	-	-	\$90,000

**Partner: Minnesota Land Trust**

**Totals**

Item	Funding Request	Antic. Leverage	Leverage Source	Total
Personnel	\$100,000	-	-	\$100,000
Contracts	\$36,000	-	-	\$36,000
Fee Acquisition w/ PILT	-	-	-	-
Fee Acquisition w/o PILT	-	-	-	-
Easement Acquisition	\$1,366,000	\$136,000	Landowner donation of easement value	\$1,502,000
Easement Stewardship	\$168,000	-	-	\$168,000
Travel	\$12,000	-	-	\$12,000
Professional Services	\$151,000	-	-	\$151,000
Direct Support Services	\$27,000	-	-	\$27,000
DNR Land Acquisition Costs	-	-	-	-
Capital Equipment	-	-	-	-
Other Equipment/Tools	-	-	-	-
Supplies/Materials	\$3,000	-	-	\$3,000
DNR IDP	-	-	-	-
<b>Grand Total</b>	<b>\$1,863,000</b>	<b>\$136,000</b>	-	<b>\$1,999,000</b>

**Personnel**

Position	Annual FTE	Years Working	Funding Request	Antic. Leverage	Leverage Source	Total
MLT Land Protection Staff	0.26	4.0	\$100,000	-	-	\$100,000

**Amount of Request:** \$2,838,000

**Amount of Leverage:** \$213,100

**Leverage as a percent of the Request:** 7.51%

**DSS + Personnel:** \$247,000

**As a % of the total request:** 8.7%

**Easement Stewardship:** \$168,000

**As a % of the Easement Acquisition:** 12.3%

**How will this program accommodate the reduced appropriation recommendation from the original proposed requested amount?**

Outputs would be reduced proportionately to the funding that was allocated. Calculations would ensure NWLT would secure one priority parcel in fee title acquisition and conduct effective landowner outreach. MLT’s budget would enable a proportionate amount of conservation easement acres.

**Describe and explain leverage source and confirmation of funds:**

NWLT - Leverage will be secured through partnerships with counties, local lake associations and the landowners. MLT - Landowners are encouraged to fully or partially donate the value of conservation easements to the program; the leverage amount is a conservative estimate of value we expect to see donated by landowners.

## Personnel

### Has funding for these positions been requested in the past?

Yes

#### **Please explain the overlap of past and future staffing and position levels previously received and how that is coordinated over multiple years?**

NWLT - estimates the personnel costs for fee title acquisition, conservation easement outreach and grant administration activities to accomplish the specific outcomes for each grant.

MLT - FTEs listed in the proposal are a coarse estimate of the personnel time required to produce the grant deliverables put forward in this proposal. An array of staff draw from these funds for legal work, negotiating with landowners, crafting of conservation easements, writing baseline reports and managing the grant.

## Contracts

### What is included in the contracts line?

NWLT contracts may involve local Soil and Water Conservation Districts.

MLT - Writing of habitat management plans by vendors, posting of easement boundaries.

## Fee Acquisition

### What is the anticipated number of fee title acquisition transactions?

NWLT anticipates one fee title acquisition project. If remaining funds are available, these may be applied towards a second project.

## Easement Stewardship

### What is the number of easements anticipated, cost per easement for stewardship, and explain how that amount is calculated?

MLT expects to close 4-6 conservation easements under this appropriation. The average cost per easement to fund the Minnesota Land Trust's perpetual monitoring and enforcement obligations is \$24,000. This figure is derived from MLT's detailed stewardship funding "cost analysis" which is consistent with Land Trust Accreditation standards. MLT shares periodic updates to this cost analysis with LSOHC staff.

## Travel

### Does the amount in the travel line include equipment/vehicle rental?

Yes

### Explain the amount in the travel line outside of traditional travel costs of mileage, food, and lodging

Minnesota Land Trust staff regularly rents vehicles for grant-related purposes, which is a significant cost savings over use of personal vehicles.

### I understand and agree that lodging, meals, and mileage must comply with the current MMB Commissioner Plan:

Yes

## Direct Support Services

### How did you determine which portions of the Direct Support Services of your shared support services is direct to this program?

NWLT has received approval from DNR Grants Program on specific Direct Support Services costs.

MLT - In a process that was approved by the DNR on March 17, 2017, Minnesota Land Trust determined our direct support services rate to include all of the allowable direct and necessary expenditures that are not captured in other line items in the budget, which is similar to the Land Trust's proposed federal indirect rate. We will apply this DNR-approved rate only to personnel expenses to determine the total amount of direct support services.

## **Federal Funds**

**Do you anticipate federal funds as a match for this program?**

No

## Output Tables

### Acres by Resource Type (Table 1)

Type	Wetland	Prairie	Forest	Habitat	Total Acres
Restore	-	-	-	-	-
Protect in Fee with State PILT Liability	-	-	-	40	40
Protect in Fee w/o State PILT Liability	-	-	-	241	241
Protect in Easement	-	-	-	334	334
Enhance	-	-	-	-	-
<b>Total</b>	-	-	-	<b>615</b>	<b>615</b>

### Total Requested Funding by Resource Type (Table 2)

Type	Wetland	Prairie	Forest	Habitat	Total Funding
Restore	-	-	-	-	-
Protect in Fee with State PILT Liability	-	-	-	\$203,000	\$203,000
Protect in Fee w/o State PILT Liability	-	-	-	\$661,500	\$661,500
Protect in Easement	-	-	-	\$1,973,500	\$1,973,500
Enhance	-	-	-	-	-
<b>Total</b>	-	-	-	<b>\$2,838,000</b>	<b>\$2,838,000</b>

### Acres within each Ecological Section (Table 3)

Type	Metro/Urban	Forest/Prairie	SE Forest	Prairie	N. Forest	Total Acres
Restore	-	-	-	-	-	-
Protect in Fee with State PILT Liability	-	-	-	-	40	40
Protect in Fee w/o State PILT Liability	-	-	-	-	241	241
Protect in Easement	-	-	-	-	334	334
Enhance	-	-	-	-	-	-
<b>Total</b>	-	-	-	-	<b>615</b>	<b>615</b>

### Total Requested Funding within each Ecological Section (Table 4)

Type	Metro/Urban	Forest/Prairie	SE Forest	Prairie	N. Forest	Total Funding
Restore	-	-	-	-	-	-
Protect in Fee with State PILT Liability	-	-	-	-	\$203,000	\$203,000
Protect in Fee w/o State PILT Liability	-	-	-	-	\$661,500	\$661,500
Protect in Easement	-	-	-	-	\$1,973,500	\$1,973,500
Enhance	-	-	-	-	-	-
<b>Total</b>	-	-	-	-	<b>\$2,838,000</b>	<b>\$2,838,000</b>

### Average Cost per Acre by Resource Type (Table 5)

Type	Wetland	Prairie	Forest	Habitat
Restore	-	-	-	-
Protect in Fee with State PILT Liability	-	-	-	\$5,075
Protect in Fee w/o State PILT Liability	-	-	-	\$2,744
Protect in Easement	-	-	-	\$5,908
Enhance	-	-	-	-

### Average Cost per Acre by Ecological Section (Table 6)

Type	Metro/Urban	Forest/Prairie	SE Forest	Prairie	N. Forest
Restore	-	-	-	-	-
Protect in Fee with State PILT Liability	-	-	-	-	\$5,075
Protect in Fee w/o State	-	-	-	-	\$2,744

PILT Liability					
Protect in Easement	-	-	-	-	\$5,908
Enhance	-	-	-	-	-

**Target Lake/Stream/River Feet or Miles**

0.6 miles

**Outcomes**

**Programs in the northern forest region:**

- *Forestlands are protected from development and fragmentation ~ Private shoreline habitat and forested parcels totaling 334 acres will be permanently protected from development and fragmentation through conservation easements. Riparian forest lands under easement will maintain healthy habitat complexes for upland and aquatic species; forest cover will enhance water quality habitat for tullibee lakes. Conservation easement properties will protect fish habitat to ensure high quality fishing opportunities. Greater public access for wildlife and outdoors-related recreation will be attained through Fee-Title acquisition of properties to be conveyed to either Cass County as forest management lands or to the DNR as AMA's and open to public for hunting.*

## Parcels

*For restoration and enhancement programs ONLY: Managers may add, delete, and substitute projects on this parcel list based upon need, readiness, cost, opportunity, and/or urgency so long as the substitute parcel/project forwards the constitutional objectives of this program in the Project Scope table of this accomplishment plan. The final accomplishment plan report will include the final parcel list.*

## Parcel Information

### Sign-up Criteria?

[Yes](#)

### Explain the process used to identify, prioritize, and select the parcels on your list:

Criteria based scoring systems provide a standardized set of data from which multiple projects can be compared relative to each other and individual projects can be compared against a baseline. Scoring systems are a set of data, not a final, complete decision making tool. Local expertise and experience, programmatic goals, timelines, available resources, capacity, and other more subjective factors might also come into play in project selection and decision making.

MLT and NWLT accept proposals via an RFP process from targeted landowners with properties on prioritized tullibee lakes. A technical team of experts scores and ranks each project proposal and identifies priorities from those submitted.

The attached scoresheet provides an approach to criteria based scoring that considers: 1) Ecological Integrity/Viability as current status; 2) Threat/Urgency as a future scenario if protection is not afforded; and 3) Cost reflecting the overall value realized through the acquisition of a conservation easement (including a reflection of donative value). Ecological Integrity weights property size, condition, and context equally (at least as an initial starting point). The three primary factors, when taken together, provide a good estimate of long-term viability for biodiversity at the site: 1) Size of the parcel to be protected, 2) Condition of the habitat on the parcel, and 3) its Landscape context (both from a protection and ecological standpoint).

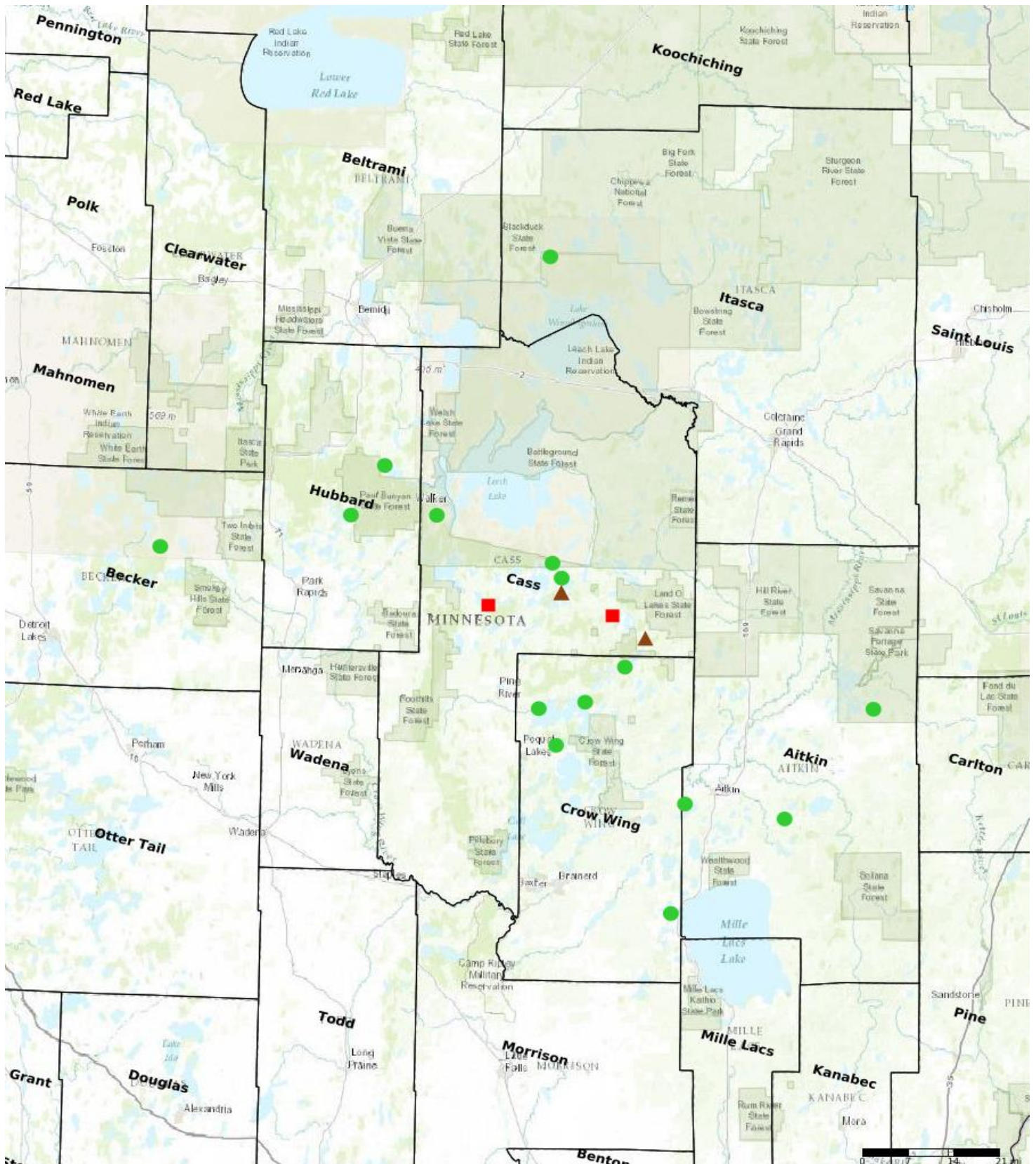
## Protect Parcels

Name	County	TRDS	Acres	Est Cost	Existing Protection
Round Lake/watershed	Aitkin	04923225	0	\$0	No
Cedar Lake/watershed	Aitkin	04727231	0	\$0	No
Long Lake/watershed	Aitkin	04625210	0	\$0	No
NWLT - Wabedo/Louise Complex	Cass	14028222	148	\$565,600	No
NWLT - Washburn	Cass	13927201	18	\$70,600	No
Wabedo Lake/watershed	Cass	14828232	0	\$0	No
NWLT - Girl/Woman	Cass	14030235	241	\$610,500	No
Girl Lake/watershed	Cass	14128233	0	\$0	No
Roosevelt Lake/watershed	Cass	13826208	0	\$0	No
NWLT - Roosevelt	Cass	13926223	28	\$750,000	No
Little Boy Lake/watershed	Cass	14028210	0	\$0	No
Long Lake/watershed	Cass	14231233	0	\$0	No
Whitefish Lake/watershed	Crow Wing	13728207	0	\$0	No
Ossawinamakee Lake/watershed	Crow Wing	13628204	0	\$0	No
Island Lake/Loon Lake watershed	Crow Wing	13727205	0	\$0	No
Borden Lake/watershed	Crow Wing	04428214	0	\$0	No
Big Mantrap Lake/watershed	Hubbard	14233232	0	\$0	No
Big Sand Lake/watershed	Hubbard	14138228	0	\$0	No
Kabekona Lake/watershed	Hubbard	14332230	0	\$0	No

## Protect Parcels with Buildings

Name	County	TRDS	Acres	Est Cost	Existing Protection	Buildings	Value of Buildings
NWLT - Wabedo	Cass	14028222	20	\$248,500	No	1	\$500





**Parcel Map**  
**Fisheries Habitat Protection on Strategic North**  
**Central Minnesota Lakes - Phase VII**  
**(Data Generated From Parcel List)**

- Protect in Easement
- ▲ Protect in Fee with PILT
- Protect in Fee W/O PILT
- ★ Restore
- ✕ Enhance
- ⊕ Other



## Lessard-Sams Outdoor Heritage Council

### Comparison Report

**Program Title:** ML 2021 - Fisheries Habitat Protection on Strategic North Central Minnesota Lakes - Phase VII

**Organization:** Northern Waters Land Trust

**Manager:** Kathy DonCarlos

### Budget

**Requested Amount:** \$7,942,600

**Appropriated Amount:** \$2,838,000

**Percentage:** 35.73%

Item	Total Requested		Total Appropriated		Percentage of Request	
	Requested	Leverage	Appropriated	Leverage	Percent of Request	Percent of Leverage
Personnel	\$386,600	-	\$190,000	-	49.15%	-
Contracts	\$140,800	-	\$51,000	-	36.22%	-
Fee Acquisition w/ PILT	\$2,036,200	\$203,600	\$171,000	\$17,100	8.4%	8.4%
Fee Acquisition w/o PILT	-	-	\$600,000	\$60,000	-	-
Easement Acquisition	\$4,500,000	\$450,000	\$1,366,000	\$136,000	30.36%	30.22%
Easement Stewardship	\$240,000	-	\$168,000	-	70.0%	-
Travel	\$27,000	-	\$15,000	-	55.56%	-
Professional Services	\$415,000	-	\$215,000	-	51.81%	-
Direct Support Services	\$135,500	-	\$57,000	-	42.07%	-
DNR Land Acquisition Costs	\$40,000	-	-	-	0.0%	-
Capital Equipment	-	-	-	-	-	-
Other Equipment/Tools	-	-	-	-	-	-
Supplies/Materials	\$11,500	-	\$5,000	-	43.48%	-
DNR IDP	\$10,000	-	-	-	0.0%	-
<b>Grand Total</b>	<b>\$7,942,600</b>	<b>\$653,600</b>	<b>\$2,838,000</b>	<b>\$213,100</b>	<b>35.73%</b>	<b>32.6%</b>

### How will this program accommodate the reduced appropriation recommendation from the original proposed requested amount?

Outputs would be reduced proportionately to the funding that was allocated. Calculations would ensure NWLT would secure one

priority parcel in fee title acquisition and conduct effective landowner outreach. MLT's budget would enable a proportionate amount

of conservation easement acres.

## Output

### Acres by Resource Type (Table 1)

Type	Total Proposed	Total in AP	Percentage of Proposed
Restore	0	-	-
Protect in Fee with State PILT Liability	455	40	8.79%
Protect in Fee w/o State PILT Liability	0	241	-
Protect in Easement	1,100	334	30.36%
Enhance	0	-	-

### Total Requested Funding by Resource Type (Table 2)

Type	Total Proposed	Total in AP	Percentage of Proposed
Restore	-	-	-
Protect in Fee with State PILT Liability	\$2,269,900	\$203,000	8.94%
Protect in Fee w/o State PILT Liability	-	\$661,500	-
Protect in Easement	\$5,672,700	\$1,973,500	34.79%
Enhance	-	-	-

### Acres within each Ecological Section (Table 3)

Type	Total Proposed	Total in AP	Percentage of Proposed
Restore	0	-	-
Protect in Fee with State PILT Liability	455	40	8.79%
Protect in Fee w/o State PILT Liability	0	241	-
Protect in Easement	1,100	334	30.36%
Enhance	0	-	-

### Total Requested Funding within each Ecological Section (Table 4)

Type	Total Proposed	Total in AP	Percentage of Proposed
Restore	-	-	-
Protect in Fee with State PILT Liability	\$2,269,900	\$203,000	8.94%
Protect in Fee w/o State PILT Liability	-	\$661,500	-
Protect in Easement	\$5,672,700	\$1,973,500	34.79%
Enhance	-	-	-

## Clean Water Critical Habitat Project Scoresheet

Program Requirements	
In a tullibee lake watershed?	Yes or No
In Aitkin, Cass, Crow Wing or Hubbard County?	Yes or No
At least 20 acres protected in Conservation Easement?	Yes or No
Others?	Yes or No

### 1. ECOLOGICAL FACTORS

#### Size/Abundance of Habitat (1/3 of Overall Ecological Score)

Criteria	Score	Max Points	Draft Guidelines -
Feet of Shoreline	0	30	10 points for 0 - 2,000 feet
			15 points for 2,001 - 5,000 feet
			20 points for 5,001 - 10,000 feet
			25 points for 10,001 - 20,000 feet
			30 points for ≥ 20,000 feet
Parcel Acres to be Protected by Easement	0	60	10 points for 10 - 30 acres
			20 points for 31 - 80 acres
			30 points for 81 - 160 acres
			40 points for 161 - 300 acres
			50 points for 301 - 400 acres
			60 points for ≥ 401 acres
	0	Size/Abundance Subtotal Score	

#### Quality/Condition of Resource (1/3 of Overall Ecological Score)

Criteria	Score	Max Points	Draft Guidelines -
Designated Sensitive Shoreland	0	30	10 point for ≤ 33%
			20 points for 34 - 66%
			30 points for 67 - 100%
% Property Developed (more development, less value)	0	30	0 points for ≥ 31% developed
			10 points for 21 - 30% developed
			20 points for 11 - 20% developed
			30 points for 0 - 10% developed
Site visit/Aerial evaluation	0	30	Quality habitat on property
			0 points - Highly impacted (trails, logging, structures etc.)
			10 points - Moderately impacted (significant number of trails, land disturbance)
			20 points - Mostly in natural state (limited natural foot trails, good forest management, no structures etc.)
			30 points - Undisturbed natural state
	0	Quality/Condition of Resource Score	

#### Landscape Context (1/3 of Overall Ecological Score)

Criteria	Score	Max Points	Draft Guidelines -
Adjoining protected land	0	30	All sides=30, One side=10, No=0 Public land would include tribal land.
Near, but not adjoining, protected land within 3 miles of the property	0	30	10 point for 500 - 6,000 acres
			20 points for 6,001 - 12,000 acres
			30 points for 12,001 - 18,000 acres
Wildlife Action Network	0	30	0 points for not in WAN
			10 points Low
			15 points Low-Medium
			20 points Medium
			25 points Medium High
			30 points High
	0	Landscape Context subtotal score	
	0	Ecological Total = (Size + Quality + Landscape)/3.	

<b>2. Threat/Urgency</b>			
Criteria	Score	Max Points	Draft Guidelines -
<b>Urgency - Disturbance in Minor Watershed (more disturbance, higher score)</b>	0	45	45 points for ≥ 31% developed
			30 points for 21 - 30% developed
			20 points for 11 - 20% developed
			10 points for 0 - 10% developed
<b>Risk Classification from Water Plans (more risk, higher score)</b>	0	45	10 = Vigilance
			20 = Protection
			30 = Risk
			45 = High Risk
	0	<b>Threat Urgency Total</b>	

<b>3. Cost - Consider after initial application screening and landowner knowledge</b>			
Criteria	Score	Max Points	Draft Guidelines -
<b>Cost/donative value (Bang for the buck)</b>	0	90	90 = 90 - 100% donation
			70 = 51 - 89% donation
			50 = 26 - 50% donation
			30 = 5 - 25% donation
			0 = 0 - 4% donation

Landscape Context	0
Threat/Urgency	0
Cost/Donative Value	0
<b>TOTAL SCORE</b>	<b>0</b>