



Lessard-Sams Outdoor Heritage Council

Laws of Minnesota 2021 Accomplishment Plan

General Information

Date: 12/11/2020

Project Title: Lower Otter Tail River Corridor Habitat Restoration - Request 1

Funds Recommended: \$2,335,000

Legislative Citation: ML 2021, Ch. XX, Art. 1, Sec. 2, subd.

Appropriation Language:

Manager Information

Manager's Name: Kristine Altrichter

Title: Administrator

Organization: BRRWD

Address: PO Box 341

City: Barnesville, MN 56514

Email: kaltrichter@brrwd.org

Office Number: 218-789-3100

Mobile Number:

Fax Number:

Website:

Location Information

County Location(s): Wilkin.

Eco regions in which work will take place:

- Prairie

Activity types:

- Protect in Easement

Priority resources addressed by activity:

- Prairie

Narrative

Abstract

Channelization of the Lower Otter Tail River in the early 1950s converted 18 miles of sinuous river channel to 11 miles of straight channel and resulted in the loss of several thousand acres of wetland, and prairie habitat within the river's corridor. Through a partnership between the Buffalo-Red River Watershed District, the Wilkin Soil & Water Conservation District, and the Minnesota Board of Water and Soil Resources, this proposal will permanently protect 410 acres (est.) of private lands in easements. This phase represents a model approach to river corridor acquisition and is critical to advancing this large river restoration project.

Design and Scope of Work

The channelization of rivers and streams in the Red River basin has destroyed hundreds of miles of aquatic habitat and eliminated thousands of acres of riparian forest, wetland, and prairie. The US Army Corps of Engineers (USACE) channelized the Lower Otter Tail River in the early 1950's to improve drainage and provide flood control. The channelized reach of the Otter Tail River currently provides little functional aquatic or riparian corridor habitat and reduces connectivity between the lower 10 miles of the river and the upper 13 miles. The vision for the project includes establishment of a 600-foot to 1/2-mile-wide protected corridor along the river channel, setting back existing spoil banks, reconnecting oxbows, construction of a natural meandering river channel, and restoration of riparian wetland and prairie plant communities. The project will restore degraded habitat and reestablish natural levels of connectivity between the river and its floodplain. The Otter Tail River is currently designated as a MN State Water Trail. Outdoor recreation will benefit from the restoration by expanding opportunities to enjoy wildlife through improved kayaking and canoeing along the river.

The Buffalo-Red River Watershed District (BRRWD) began development of this project in 2015 by initiating conversations with other Local Government Units, and the MN Department of Natural Resources. In 2016, the BRRWD was the recipient of Section 319 grant funding through the MN Pollution Control Agency (MPCA), and Clean Water Fund grant funding through the Board of Water and Soil Resources (BWSR). These grant funds allowed for survey work and the development of a detailed concept plan for river restoration. Concurrent with those efforts, the BRRWD began discussions with the USACE. This led to partnering with the USACE on a Section 1135 feasibility evaluation, and further refinement of the river restoration and setback levees alignment proposed in future phases of the project. Potentially the USACE can bring \$10 million to restore portions of the Otter Tail River affected by their 1950's straightening work. The 1135 program leaves the responsibility for land rights to project proposers which is the reason for this application.

The partnership between the BRRWD and BWSR will use the Reinvest In Minnesota (RIM) Program to secure, maintain, and monitor easements within the corridor. Since this is a large project, the river has been divided into Reaches A to C (attached illustration). This funding request will target acquisition to Reach A of the corridor. While land acquisition will be targeted to Reach A, other opportunities to protect lands within or adjacent to the main corridor (A-C) will also be considered. A total of approximately 410 acres of land is targeted for acquisition with this proposal. Once acquisition is complete, future channel rehabilitation/restoration phases of the project will be completed with the assistance of MN DNR and USACE. The BRRWD will be the local sponsor responsible for final design, engineering, and construction of the project. BRRWD has developed marketing materials to utilize in soliciting applications when the 2021 funds become available in July.

How does the plan address habitats that have significant value for wildlife species of greatest conservation need, and/or threatened or endangered species, and list targeted species?

This project is the land acquisition phase of a long-term project that will restore 18 miles of river and over 3,300 acres of habitat for associated fish and wildlife communities. In addition to the direct habitat benefits within the project area, fish and wildlife populations downstream of the project will benefit through water quality improvements. The Otter Tail River and associated prairie and forest lowland habitats were identified as key habitats for species of greatest conservation need in the Red River Prairie ecoregion. Key among aquatic species is the Lake Sturgeon, a species of special concern. The Otter Tail River provides critical sturgeon habitat and is a primary reintroduction waterbody where Lake Sturgeon have been stocked. Restoration of Otter Tail River habitat will help ensure successful reestablishment of Lake Sturgeon populations in the Red River basin.

This project will also likely benefit mussel and insect populations in the Otter Tail River. Two species of caddisfly and two species of mussels, Black Sandshell and Fluted-shell are listed as species of special concern and known to be present in the upstream reaches of the Otter Tail River. Acquisition and restoration of the stream and associated riparian wetlands will also improve habitat for gamefish and more than 75 other fish species present in other reaches of the Buffalo-Red River watershed.

Describe how the plan uses science-based targeting that leverages or expands corridors and complexes, reduces fragmentation or protects areas identified in the MN County Biological Survey:

Restoration of the Lower Otter Tail River Corridor is listed as a high priority project on the MN DNR state river restoration priority list. This list takes into account resource potential, critical habitat, and impacts regarding invasive species when scoring projects. The Minnesota Prairie Plan also lists restoration of channelized prairie river segments and reestablishment of riparian buffers on cultivated land immediately adjacent to streams and ditches as critical challenges. Markers for a number of federally- or state-listed animals including Greater Prairie Chicken and Lake Sturgeon have been identified by the Minnesota County Biological Survey within the Lower Otter Tail River Corridor. Restoration will reduce fragmentation of Lake Sturgeon habitat within the Red River Basin. Reference stream reaches established by the MN DNR will be used to help set the geometry of the restored river. Reference stream reach data from the MN DNR is based on collected survey of streams all around Minnesota. The purpose of using local reference data for the restoration geometry is to reestablish a sustainable and healthy river ecosystem.

Which two sections of the Minnesota Statewide Conservation and Preservation Plan are most applicable to this project?

- H2 Protect critical shoreland of streams and lakes
- H6 Protect and restore critical in-water habitat of lakes and streams

Which two other plans are addressed in this program?

- Minnesota Prairie Conservation Plan
- Red River of the North Fisheries Management Plan

Which LSOHC section priorities are addressed in this program?

Prairie

- Protect, enhance, or restore existing wetland/upland complexes, or convert agricultural lands to new wetland/upland habitat complexes

Does this program include leveraged funding?

Yes

Explain the leverage:

The BRRWD has agreed to contribute an amount up to 20% of the offered RIM payments to match the LSOHC funding. This amounts to an approximately 13% match to the LSOHC funds. In addition, the BRRWD recently agreed to continue the Section 1135 study with the USACE which will involve \$450,000 which will be split 50% BRRWD/50% USACE

Per MS 97A.056, Subd. 24, Please explain whether the request is supplanting or is a substitution for any previous funding that was not from a legacy fund and was used for the same purpose.

This funding request is not supplanting existing funding or a substitution for any previous funding.

Non-OHF Appropriations

Year	Source	Amount
2016	BWSR Clean Water Fund	\$203,000
2016 - 2020	US Army Corps of Engineers	\$200,000
2016	MPCA EPA Section 319 Funding	\$242,000
2018-2020	BRRWD	\$100,000
2020-2021	US Army Corps of Engineers Section 1135	\$225,000
2020-2021	BRRWD (Section 1135 Match)	\$225,000

How will you sustain and/or maintain this work after the Outdoor Heritage Funds are expended?

Once a RIM easement is acquired, BWSR is responsible for monitoring and enforcement into perpetuity. The BWSR partners with local SWCDs to carry-out oversight, monitoring and inspection of its conservation easements. Easements are inspected for the first five consecutive years beginning in the year after the easement is recorded. Thereafter, on-site inspections are performed every three years and compliance checks are performed in the other two years. SWCDs report to BWSR on each site inspection conducted and partners’ staff document findings. A non-compliance procedure is implemented when potential violations or problems are identified.

Perpetual monitoring and enforcement costs have been calculated at \$6,500 per easement. This value is based on using local SWCD staff for monitoring and landowner relations and existing enforcement authorities. The amount listed for Easement Stewardship cover costs of the SWCD regular monitoring, BWSR oversight, and any enforcement necessary.

Actions to Maintain Project Outcomes

Year	Source of Funds	Step 1	Step 2	Step 3
2021 - Ongoing	Stewardship Account	Inspection every year for first 5-years; then every 3rd year	Corrective actions on any violations	Enforcement action taken by MN Attorney General Office
2021 - Ongoing	Landowner Responsibility	Maintain compliance with easement terms	-	-

Activity Details

Requirements

If funded, this program will meet all applicable criteria set forth in MS 97A.056?

Yes

Is the land you plan to acquire (easement) free of any other permanent protection?

Yes

Who will manage the easement?

BWSR will be the responsible party for monitoring and enforcing easements.

Who will be the easement holder?

BWSR will be the easement holder.

What is the anticipated number of easements (range is fine) you plan to accomplish with this appropriation?

Approximately 17 easements are planned to be acquired

Land Use

Will there be planting of any crop on OHF land purchased or restored in this program?

Yes

Explain what will be planted:

In certain circumstances food plots for wildlife are an allowable use on RIM easements and must be part of an approved Conservation Plan. Food plots on narrow buffers, steep slopes and wet areas are not allowed. RIM policy limits food plots to 10% of the total easement area or 5 acres whichever is smaller. There is no cost share for establishment of food plots and upon termination the landowners must reestablish the vegetation as prescribed in the Conservation Plan at their own expense. Food plots are a rarely selected option by landowners, to date only 2.2% of RIM easements have food plots.

Will the eased land be open for public use?

No

Are there currently trails or roads on any of the proposed acquisitions?

Yes

Describe the types of trails or roads and the allowable uses:

This appropriation is funding a program that will have a parcel list identified at a later time. Roads or trails are typically excluded from the easement area if they serve no beneficial purpose to easement maintenance, monitoring, or enforcement. Existing trails and roads are identified during the easement acquisition process. Some roads and trails, such as agricultural field accesses, are allowed to remain.

Will the trails or roads remain and uses continue to be allowed after OHF acquisition?

Yes

How will maintenance and monitoring be accomplished?

The easements secured under this project will be managed as part of the MN Board of Water and Soil Resources (BWSR) RIM Reserve Program that has over 7,196 easements currently in place. Easements are monitored annually for each of the first 5 years and then every 3rd year after that. BWSR, in cooperation with Soil and Water Conservation Districts (SWCD), implement a

stewardship process to track, monitor quality and assure compliance with easement terms.

Under the terms of the Reinvest In Minnesota (RIM) Easement Program, landowners are required to maintain compliance with the easement. A conservation plan is developed with the landowner and maintained as part of each easement. Basic easement compliance costs are borne by the landowner, periodic enhancements may be cost shared from a variety of sources.

Will new trails or roads be developed or improved as a result of the OHF acquisition?

Yes

Describe the types of trails or roads and the allowable uses:

This appropriation is funding a program that will have a parcel list identified at a later time. Roads or trails are typically excluded from the easement area if they serve no beneficial purpose to easement maintenance, monitoring, or enforcement. Existing trails and roads are identified during the easement acquisition process. Some roads and trails, such as agricultural field accesses, are allowed to remain.

How will maintenance and monitoring be accomplished?

BRRWD and BWSR are in the process of approving a Memorandum of understanding which details responsibilities for easement acquisition. The easements secured under this project will be managed as part of the BWSR RIM Reserve Program that has over 7,196 easements currently in place. Easements are monitored annually for each of the first 5 years and then every 3rd year after that. BWSR, in cooperation with Soil and Water Conservation Districts (SWCD), implement a stewardship process to track, monitor quality and assure compliance with easement terms.

Under the terms of the Reinvest In Minnesota (RIM) Easement Program, landowners are required to maintain compliance with the easement. A conservation plan is developed with the landowner and maintained as part of each easement. Basic easement compliance costs are borne by the landowner, periodic enhancements may be cost shared from a variety of sources.

Will the acquired parcels be restored or enhanced within this appropriation?

Yes

Vegetative restoration is planned to occur and these restoration costs are included in the easement acquisition amount.

Will the land that you acquire (fee or easement) be restored or enhanced within this program's funding and availability?

Yes

Timeline

Activity Name	Estimated Completion Date
Obtain applications from eligible landowners	June 30, 2022
Allocation to specific parcels	June 30, 2023
Easements recorded	June 30, 2025
Restorations completed and final report submitted	June 30, 2026

Date of Final Report Submission: 11/01/2026

Budget

Budget reallocations up to 10% do not require an amendment to the Accomplishment Plan.

Grand Totals Across All Partnerships

Item	Funding Request	Antic. Leverage	Leverage Source	Total
Personnel	\$161,000	-	-	\$161,000
Contracts	\$35,700	-	-	\$35,700
Fee Acquisition w/ PILT	-	-	-	-
Fee Acquisition w/o PILT	-	-	-	-
Easement Acquisition	\$1,724,100	\$303,800	-, BRRWD	\$2,027,900
Easement Stewardship	\$110,500	-	-	\$110,500
Travel	\$3,600	-	-	\$3,600
Professional Services	\$275,000	-	-	\$275,000
Direct Support Services	\$18,400	-	-	\$18,400
DNR Land Acquisition Costs	-	-	-	-
Capital Equipment	-	-	-	-
Other Equipment/Tools	\$5,200	-	-	\$5,200
Supplies/Materials	\$1,500	-	-	\$1,500
DNR IDP	-	-	-	-
Grand Total	\$2,335,000	\$303,800	-	\$2,638,800

Partner: BWSR

Totals

Item	Funding Request	Antic. Leverage	Leverage Source	Total
Personnel	\$161,000	-	-	\$161,000
Contracts	\$35,700	-	-	\$35,700
Fee Acquisition w/ PILT	-	-	-	-
Fee Acquisition w/o PILT	-	-	-	-
Easement Acquisition	\$1,724,100	-	-	\$1,724,100
Easement Stewardship	\$110,500	-	-	\$110,500
Travel	\$3,600	-	-	\$3,600
Professional Services	-	-	-	-
Direct Support Services	\$18,400	-	-	\$18,400
DNR Land Acquisition Costs	-	-	-	-
Capital Equipment	-	-	-	-
Other Equipment/Tools	\$5,200	-	-	\$5,200
Supplies/Materials	\$1,500	-	-	\$1,500
DNR IDP	-	-	-	-
Grand Total	\$2,060,000	-	-	\$2,060,000

Personnel

Position	Annual FTE	Years Working	Funding Request	Antic. Leverage	Leverage Source	Total
Easement Processing	0.3	3.0	\$81,000	-	-	\$81,000
Program Management	0.22	3.0	\$80,000	-	-	\$80,000

Partner: BRRWD

Totals

Item	Funding Request	Antic. Leverage	Leverage Source	Total
Personnel	-	-	-	-
Contracts	-	-	-	-
Fee Acquisition w/ PILT	-	-	-	-
Fee Acquisition w/o PILT	-	-	-	-
Easement Acquisition	-	\$303,800	BRRWD	\$303,800
Easement Stewardship	-	-	-	-
Travel	-	-	-	-
Professional Services	\$275,000	-	-	\$275,000
Direct Support Services	-	-	-	-
DNR Land Acquisition Costs	-	-	-	-
Capital Equipment	-	-	-	-
Other Equipment/Tools	-	-	-	-
Supplies/Materials	-	-	-	-
DNR IDP	-	-	-	-
Grand Total	\$275,000	\$303,800	-	\$578,800

Amount of Request: \$2,335,000

Amount of Leverage: \$303,800

Leverage as a percent of the Request: 13.01%

DSS + Personnel: \$179,400

As a % of the total request: 7.68%

Easement Stewardship: \$110,500

As a % of the Easement Acquisition: 6.41%

How will this program accommodate the reduced appropriation recommendation from the original proposed requested amount?

The Lower Otter Tail River corridor habitat restoration project is a long term project. The Watershed District accommodated for the reduced level of funding by adjusting the number of acquired acres.

Describe and explain leverage source and confirmation of funds:

The BRRWD has agreed to contribute an amount equal to 20% of the offered RIM payments to match the LSOHC funding. This amounts to an approximately 13% match to the LSOHC funds

Personnel

Has funding for these positions been requested in the past?

No

Contracts

What is included in the contracts line?

The contract line amount will be used for payments to SWCD staff for easement implementation

Easement Stewardship

What is the number of easements anticipated, cost per easement for stewardship, and explain how that amount is calculated?

Perpetual monitoring and enforcement costs have been calculated at \$6,500 per easement. This value is based on using local SWCD staff for monitoring and landowner relations and existing enforcement authorities. The amount listed for easement stewardship covers cost of the SWCD regular monitoring, BWSR oversight and any enforcement necessary.

Travel

Does the amount in the travel line include equipment/vehicle rental?

No

Explain the amount in the travel line outside of traditional travel costs of mileage, food, and lodging

The travel line will only be used for traditional costs with the addition of vehicle lease costs that are directly attributable to work completed with this appropriation. It is estimated that lease costs may amount to approximately 40% of travel costs for this appropriation.

I understand and agree that lodging, meals, and mileage must comply with the current MMB Commissioner Plan:

Yes

Direct Support Services

How did you determine which portions of the Direct Support Services of your shared support services is direct to this program?

BWSR calculates direct support services costs that are directly related to and necessary for each request based on the type of work being done.

Other Equipment/Tools

Give examples of the types of Equipment and Tools that will be purchased?

Signs, posts and field equipment.

Federal Funds

Do you anticipate federal funds as a match for this program?

No

Output Tables

Acres by Resource Type (Table 1)

Type	Wetland	Prairie	Forest	Habitat	Total Acres
Restore	-	-	-	-	-
Protect in Fee with State PILT Liability	-	-	-	-	-
Protect in Fee w/o State PILT Liability	-	-	-	-	-
Protect in Easement	-	410	-	-	410
Enhance	-	-	-	-	-
Total	-	410	-	-	410

Total Requested Funding by Resource Type (Table 2)

Type	Wetland	Prairie	Forest	Habitat	Total Funding
Restore	-	-	-	-	-
Protect in Fee with State PILT Liability	-	-	-	-	-
Protect in Fee w/o State PILT Liability	-	-	-	-	-
Protect in Easement	-	\$2,335,000	-	-	\$2,335,000
Enhance	-	-	-	-	-
Total	-	\$2,335,000	-	-	\$2,335,000

Acres within each Ecological Section (Table 3)

Type	Metro/Urban	Forest/Prairie	SE Forest	Prairie	N. Forest	Total Acres
Restore	-	-	-	-	-	-
Protect in Fee with State PILT Liability	-	-	-	-	-	-
Protect in Fee w/o State PILT Liability	-	-	-	-	-	-
Protect in Easement	-	-	-	410	-	410
Enhance	-	-	-	-	-	-
Total	-	-	-	410	-	410

Total Requested Funding within each Ecological Section (Table 4)

Type	Metro/Urban	Forest/Prairie	SE Forest	Prairie	N. Forest	Total Funding
Restore	-	-	-	-	-	-
Protect in Fee with State PILT Liability	-	-	-	-	-	-
Protect in Fee w/o State PILT Liability	-	-	-	-	-	-
Protect in Easement	-	-	-	\$2,335,000	-	\$2,335,000
Enhance	-	-	-	-	-	-
Total	-	-	-	\$2,335,000	-	\$2,335,000

Average Cost per Acre by Resource Type (Table 5)

Type	Wetland	Prairie	Forest	Habitat
Restore	-	-	-	-
Protect in Fee with State PILT Liability	-	-	-	-
Protect in Fee w/o State PILT Liability	-	-	-	-
Protect in Easement	-	\$5,695	-	-
Enhance	-	-	-	-

Average Cost per Acre by Ecological Section (Table 6)

Type	Metro/Urban	Forest/Prairie	SE Forest	Prairie	N. Forest
Restore	-	-	-	-	-
Protect in Fee with State PILT Liability	-	-	-	-	-
Protect in Fee w/o State	-	-	-	-	-

PILT Liability					
Protect in Easement	-	-	-	\$5,695	-
Enhance	-	-	-	-	-

Target Lake/Stream/River Feet or Miles

18

Outcomes

Programs in prairie region:

- Key core parcels are protected for fish, game and other wildlife ~ *The outcomes of the Lower Otter Tail River corridor project will be a stable stream with permanently protected and restored riparian corridor. This will significantly improve upland and aquatic habitat for fish and wildlife within the immediate corridor. Also, this project will improve water quality and provide substantial benefits extending to the entire watershed.*

Parcels

For restoration and enhancement programs ONLY: Managers may add, delete, and substitute projects on this parcel list based upon need, readiness, cost, opportunity, and/or urgency so long as the substitute parcel/project forwards the constitutional objectives of this program in the Project Scope table of this accomplishment plan. The final accomplishment plan report will include the final parcel list.

Parcel Information

Sign-up Criteria?

No

Explain the process used to identify, prioritize, and select the parcels on your list:

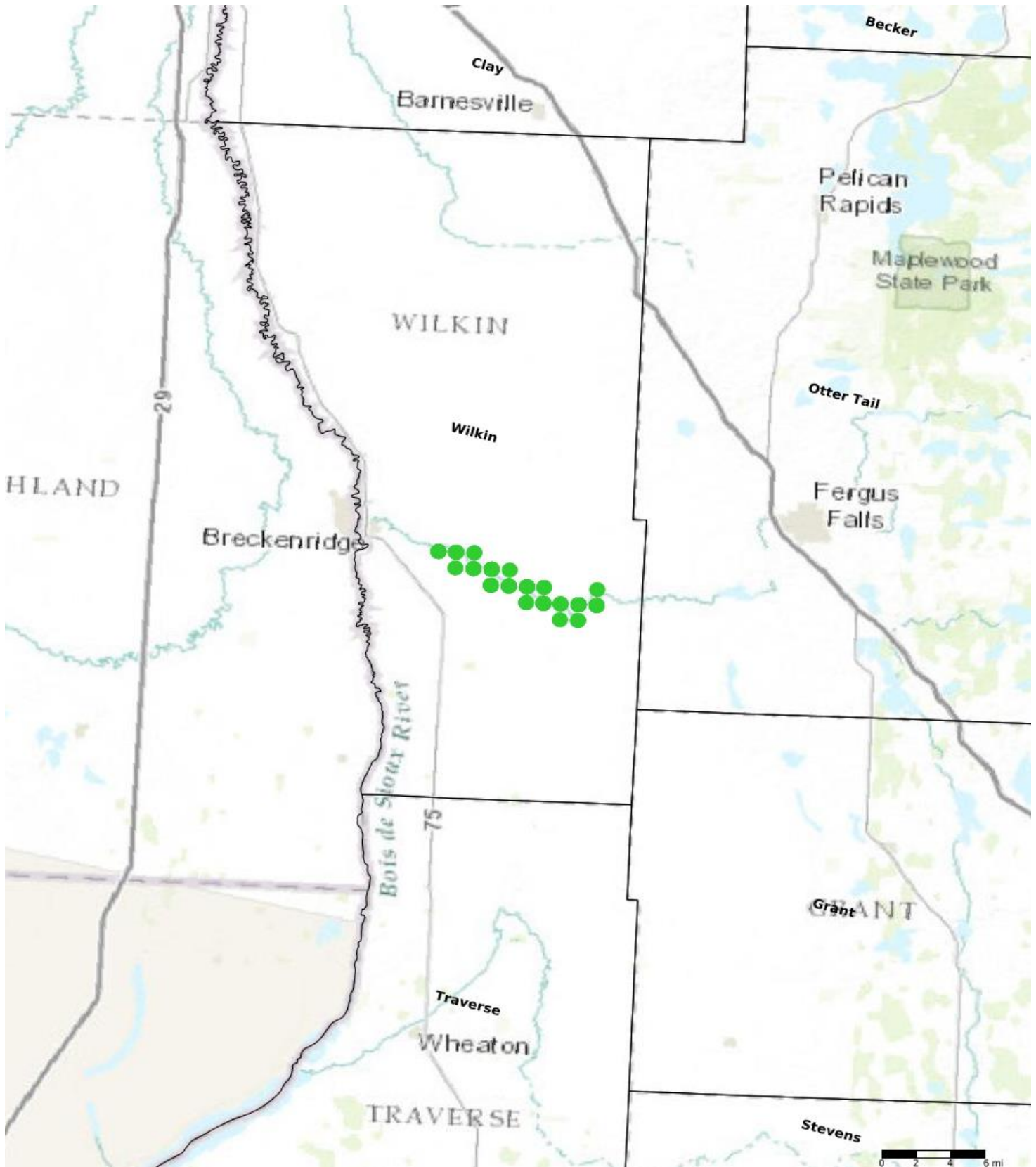
The parcels listed include all parcels needed to complete the primary channel corridor of Reach A, B and C. Priority will be given to landowners voluntarily applying within the area of Reach A. Landowners within the other reaches would be considered as secondary priority on a first come basis if funding remains after all landowners in Reach A have been offered to enroll in the program.

Protect Parcels

Name	County	TRDS	Acres	Est Cost	Existing Protection
11-030-0400	Wilkin	13245230	25	\$0	No
20-025-0400	Wilkin	13246225	48	\$0	No
20-036-0210	Wilkin	13246236	16	\$0	No
20-036-0200	Wilkin	13246236	18	\$0	No
20-018-0200	Wilkin	13246218	1	\$0	No
20-018-0105	Wilkin	13246218	1	\$0	No
20-036-0100	Wilkin	13246236	8	\$0	No
20-025-0900	Wilkin	13246225	26	\$0	No
20-025-0700	Wilkin	13246225	19	\$0	No
20-025-0200	Wilkin	13246225	86	\$0	No
20-018-0530	Wilkin	13246218	3	\$0	No
20-018-0520	Wilkin	13246218	2	\$0	No
20-018-0510	Wilkin	13246218	1	\$0	No
20-018-0300	Wilkin	13246218	2	\$0	No
11-034-0500	Wilkin	13245234	5	\$0	No
11-031-0500	Wilkin	13245231	18	\$0	No
11-032-0500	Wilkin	13245232	30	\$0	No
11-031-0400	Wilkin	13245231	13	\$0	No
11-027-0310	Wilkin	13246227	1	\$56,500	No
20-017-0300	Wilkin	13246217	4	\$0	No
20-025-0110	Wilkin	13246225	3	\$0	No
20-027-0200	Wilkin	13246227	1	\$0	No
20-022-0400	Wilkin	13246222	1	\$0	No
20-021-0200	Wilkin	13246221	1	\$55,800	No
20-020-0100	Wilkin	13246220	2	\$0	No
20-016-0500	Wilkin	13246216	6	\$77,100	No
20-016-0600	Wilkin	13246216	3	\$64,400	No
11-034-0200	Wilkin	13245234	1	\$0	No
11-034-0210	Wilkin	13245234	1	\$0	No
04-005-0300	Wilkin	13145205	1	\$0	No
11-030-0600	Wilkin	13245230	17	\$0	No
11-031-0200	Wilkin	13245231	3	\$0	No
20-025-0600	Wilkin	13246225	19	\$0	No
20-025-0100	Wilkin	13246225	3	\$0	No
20-018-0720	Wilkin	13246218	4	\$0	No

11-031-0110	Wilkin	13245231	3	\$0	No
11-031-0800	Wilkin	13245231	1	\$0	No
11-031-0700	Wilkin	13245231	1	\$0	No
11-031-0600	Wilkin	13245231	48	\$0	No
11-030-0700	Wilkin	13245230	1	\$0	No
11-032-0800	Wilkin	13245232	1	\$0	No
11-032-0900	Wilkin	13245232	19	\$0	No
20-022-0230	Wilkin	13246222	29	\$166,700	No
20-022-0220	Wilkin	13246220	29	\$166,700	No
20-022-0210	Wilkin	13246222	29	\$166,700	No
20-022-0200	Wilkin	13246222	29	\$166,700	No
20-027-0500	Wilkin	13246227	10	\$0	No
20-022-0310	Wilkin	13246222	15	\$0	No
20-022-0300	Wilkin	13246222	38	\$211,600	No
11-033-0730	Wilkin	13245233	1	\$0	No
11-033-0710	Wilkin	13245233	1	\$0	No
11-033-0720	Wilkin	13245233	1	\$0	No
11-034-0640	Wilkin	13245234	1	\$0	No
11-034-0630	Wilkin	13245234	1	\$0	No
11-034-0620	Wilkin	13245234	1	\$0	No
11-033-0740	Wilkin	13245233	1	\$0	No
11-034-0610	Wilkin	13245234	1	\$0	No
04-004-0300	Wilkin	13145204	10	\$0	No
20-017-0100	Wilkin	13246217	51	\$0	No
11-031-0100	Wilkin	13245231	10	\$0	No
20-025-0910	Wilkin	13246225	26	\$0	No
20-025-0210	Wilkin	13246225	86	\$0	No
20-027-0300	Wilkin	13246227	21	\$0	No
20-027-0210	Wilkin	13246227	34	\$0	No
20-027-0100	Wilkin	13246227	4	\$0	No
20-026-1000	Wilkin	13246226	69	\$0	No
20-026-0800	Wilkin	13246226	32	\$0	No
20-026-0500	Wilkin	13246226	34	\$0	No
20-026-0400	Wilkin	13246226	31	\$0	No
20-026-0900	Wilkin	13246226	23	\$0	No
20-026-0700	Wilkin	13246226	16	\$0	No
20-026-0600	Wilkin	13246226	37	\$0	No
20-026-0300	Wilkin	13246226	42	\$0	No
20-026-0200	Wilkin	13246226	32	\$0	No
20-026-0100	Wilkin	13246226	34	\$0	No
20-023-0400	Wilkin	13246223	1	\$0	No
20-023-0300	Wilkin	13246223	12	\$0	No
20-022-0530	Wilkin	13246222	26	\$172,700	No
20-022-0520	Wilkin	13246222	26	\$172,700	No
20-022-0510	Wilkin	13246222	26	\$0	No
20-022-0500	Wilkin	13246222	26	\$172,700	No
20-022-0600	Wilkin	13246222	25	\$0	No
20-022-0100	Wilkin	13246222	20	\$0	No
20-021-0105	Wilkin	13246221	1	\$55,600	No
20-021-0300	Wilkin	13246221	99	\$0	No
20-021-0120	Wilkin	13246221	72	\$342,000	No
20-021-0110	Wilkin	13246221	98	\$0	No
20-021-0100	Wilkin	13246221	11	\$87,700	No
20-016-0300	Wilkin	13246216	95	\$435,400	No
20-017-0120	Wilkin	13246217	3	\$0	No
20-017-0200	Wilkin	13246217	41	\$0	No
20-017-0600	Wilkin	13246217	3	\$0	No
20-017-0400	Wilkin	13246217	40	\$0	No

20-017-0500	Wilkin	13246217	49	\$0	No
20-017-0110	Wilkin	13246217	13	\$0	No
20-018-0100	Wilkin	13246218	1	\$0	No
11-031-0105	Wilkin	13245231	64	\$0	No
11-032-0610	Wilkin	13245232	2	\$0	No
11-032-0700	Wilkin	13245232	13	\$0	No
11-032-0600	Wilkin	13245232	1	\$0	No
11-031-0300	Wilkin	13245231	81	\$0	No
04-004-0200	Wilkin	13145204	1	\$0	No
04-004-0310	Wilkin	13145204	23	\$0	No
04-004-0700	Wilkin	13145204	6	\$0	No
11-033-1100	Wilkin	13245233	7	\$0	No
11-033-0310	Wilkin	13245233	27	\$0	No
11-033-0100	Wilkin	13245233	42	\$0	No
11-033-0200	Wilkin	13245233	34	\$0	No
11-033-0300	Wilkin	13245233	27	\$0	No
11-033-0500	Wilkin	13245233	1	\$0	No
11-033-0800	Wilkin	13245233	1	\$0	No
11-033-1000	Wilkin	13245233	7	\$0	No
11-033-0700	Wilkin	13245233	1	\$0	No
11-033-0900	Wilkin	13245233	1	\$0	No
11-034-0400	Wilkin	13245234	21	\$0	No
11-034-0300	Wilkin	13245234	46	\$0	No
11-034-0600	Wilkin	13245234	1	\$0	No
11-027-0510	Wilkin	13245227	1	\$0	No
11-027-0500	Wilkin	13245227	1	\$67,800	No
04-005-0100	Wilkin	13145205	13	\$0	No
20-018-0600	Wilkin	13246218	3	\$0	No
20-025-0500	Wilkin	13246225	22	\$0	No
20-025-0510	Wilkin	13246225	12	\$0	No
20-025-0300	Wilkin	13246225	3	\$0	No



- Protect in Easement
- ▲ Protect in Fee with PILT
- Protect in Fee W/O PILT
- ★ Restore
- ✕ Enhance
- ⊕ Other

Parcel Map
Lower Otter Tail River Corridor Habitat
Restoration - Request 1
(Data Generated From Parcel List)



Lessard-Sams Outdoor Heritage Council

Comparison Report

Program Title: ML 2021 - Lower Otter Tail River Corridor Habitat Restoration - Request 1

Organization: BRRWD

Manager: Kristine Altrichter

Budget

Requested Amount: \$4,500,000

Appropriated Amount: \$2,335,000

Percentage: 51.89%

Item	Total Requested		Total Appropriated		Percentage of Request	
	Requested	Leverage	Appropriated	Leverage	Percent of Request	Percent of Leverage
Personnel	\$306,900	-	\$161,000	-	52.46%	-
Contracts	\$75,600	-	\$35,700	-	47.22%	-
Fee Acquisition w/ PILT	-	-	-	-	-	-
Fee Acquisition w/o PILT	-	-	-	-	-	-
Easement Acquisition	\$3,505,300	\$622,300	\$1,724,100	\$303,800	49.19%	48.82%
Easement Stewardship	\$234,000	-	\$110,500	-	47.22%	-
Travel	\$7,900	-	\$3,600	-	45.57%	-
Professional Services	\$315,000	-	\$275,000	-	87.3%	-
Direct Support Services	\$40,600	-	\$18,400	-	45.32%	-
DNR Land Acquisition Costs	-	-	-	-	-	-
Capital Equipment	-	-	-	-	-	-
Other Equipment/Tools	\$11,300	-	\$5,200	-	46.02%	-
Supplies/Materials	\$3,400	-	\$1,500	-	44.12%	-
DNR IDP	-	-	-	-	-	-
Grand Total	\$4,500,000	\$622,300	\$2,335,000	\$303,800	51.89%	48.82%

How will this program accommodate the reduced appropriation recommendation from the original proposed requested amount?

The Lower Otter Tail River corridor habitat restoration project is a long term project. The Watershed District accommodated for the reduced level of funding by adjusting the number of acquired acres.

Output

Acres by Resource Type (Table 1)

Type	Total Proposed	Total in AP	Percentage of Proposed
Restore	0	-	-
Protect in Fee with State PILT Liability	0	-	-
Protect in Fee w/o State PILT Liability	0	-	-
Protect in Easement	850	410	48.24%
Enhance	0	-	-

Total Requested Funding by Resource Type (Table 2)

Type	Total Proposed	Total in AP	Percentage of Proposed
Restore	-	-	-
Protect in Fee with State PILT Liability	-	-	-
Protect in Fee w/o State PILT Liability	-	-	-
Protect in Easement	\$4,500,000	\$2,335,000	51.89%
Enhance	-	-	-

Acres within each Ecological Section (Table 3)

Type	Total Proposed	Total in AP	Percentage of Proposed
Restore	0	-	-
Protect in Fee with State PILT Liability	0	-	-
Protect in Fee w/o State PILT Liability	0	-	-
Protect in Easement	850	410	48.24%
Enhance	0	-	-

Total Requested Funding within each Ecological Section (Table 4)

Type	Total Proposed	Total in AP	Percentage of Proposed
Restore	-	-	-
Protect in Fee with State PILT Liability	-	-	-
Protect in Fee w/o State PILT Liability	-	-	-
Protect in Easement	\$4,500,000	\$2,335,000	51.89%
Enhance	-	-	-