



Lessard-Sams Outdoor Heritage Council

Laws of Minnesota 2021 Accomplishment Plan

General Information

Date: 12/11/2020

Project Title: DNR Forest Enhancement

Funds Recommended: \$1,338,000

Legislative Citation: ML 2021, Ch. XX, Art. 1, Sec. 2, subd.

Appropriation Language:

Manager Information

Manager's Name: Greg Hoch

Title: Prairie Habitat Supervisor

Organization: DNR

Address: 500 Lafayette Rd

City: St Paul, MN 55055

Email: greg.hoch@state.mn.us

Office Number: 651-259-5230

Mobile Number: 218-443-0476

Fax Number:

Website: www.dnr.state.mn.us

Location Information

County Location(s): Winona, Mille Lacs, Carlton, Fillmore, Goodhue, Olmsted, Cook, Crow Wing, Aitkin, St. Louis, Houston, Kanabec, Lake, Itasca, Wadena, Hubbard, Becker, Cass, Roseau, Sherburne, Chisago, Pine, Morrison, Todd, Lake of the Woods, Marshall, Beltrami, Koochiching, Dakota and Hennepin.

Eco regions in which work will take place:

- Northern Forest
- Forest / Prairie Transition
- Metro / Urban
- Southeast Forest

Activity types:

- Restore
- Enhance

Priority resources addressed by activity:

- Wetlands
- Forest
- Habitat

Narrative

Abstract

Minnesota's iconic northern forests, wetlands, and brushland habitats require management beyond basic forestry practices or at smaller scales than commercial operations work. Other enhancements, such as brushland shearing or mowing have low commercial value but high wildlife value. These additional habitat enhancements improve the quality of the forests for both wildlife and outdoor recreation. DNR's Conservation Agenda, Wildlife Action, Forest Action, SNA Strategic Land Protection and SFRMP Plans, will guide habitat enhancements in this proposal to see that all activities meet these objectives.

Design and Scope of Work

Northern Minnesota's forest habitats include pines, maple and basswood, aspen, oak forests and savannas, as well as different age classes of forests. The region also includes rivers, lakes, sedge meadows, bogs, and brushland. Each of these habitats are home to a wide array with game and non-game species, and multiple Species of Greatest Conservation Need (SGCN). They provide outdoor recreation, timber products, and support local communities. They also clean and absorb water and sequester carbon. However, these forests face increasing stress from invasive species, climate change, forest loss, and fragmentation. While forest harvest is an important tool in management of our forests, we can do additional or different enhancements to maximize the diversity and productivity of these habitats for both wildlife and people. For example, timber harvest can create a wildlife opening. However other management such as periodic mowing is needed to maintain the opening.

We will accomplish strategic and targeted enhancements through contractors to conduct activities which support healthy, diverse and resilient habitats. Activities may include 1) invasive species control, 2) firebreak development and maintenance as well as prescribed burns in fire-dependent forests, brushlands and wetlands, 3) maintaining wildlife openings 4) tree removal, girdling, brush mowing/shearing, 5) infrastructure for conservation grazing in openland and brushland habitats, 6) tree release, such as enhancing oak management for mast production, 7) forest regeneration site prep, 8) seed and acorn collection followed by broadcasting and/or drilling of seed, and 8) tree planting and protection to reforest and restore habitats, add conifer to the landscape, provide thermal cover, diversify forests, and address ash stand management.

Forest managers in Minnesota regularly work across agencies and NGOs to take a landscape view of forests. For instance, there is currently an NRCS RCPP (Regional Conservation Partnership Program) that promotes young forests for golden-winged warblers and other species that use these habitats. The people involved with this program regularly talk to DNR staff and those working for other agencies in northern Minnesota to coordinate efforts.

This request seeks funding to enhance over 4,800 acres of habitat on public lands open to hunting, primarily but not limited to, WMA, AMA, SNA and State Forest. Strategic and targeted work will be accomplished through the added capacity of contractors hired to conduct activities that support healthy, diverse and resilient habitats.

How does the plan address habitats that have significant value for wildlife species of greatest conservation need, and/or threatened or endangered species, and list targeted species?

Both young forests and mature forests require disturbances beyond standard timber harvest methods to maximize their benefits for wildlife. Prescribed fire in mature forests helps clear underbrush and open up the understory. Fire is especially important in oak and pine forests. Shearing brushlands maintains the low structure that species prefer in this habitat. In other cases, areas can be seeded with acorns or other seeds after a harvest to stimulate regrowth. Young forests and small forest openings are critical to many species of birds and mammals and need frequent, repeated enhancements to retain their habitat quality.

Each of the practices mentioned in the design and scope will benefit a wide range of game and non-game species, including mammals, birds, reptiles and amphibians, as well as pollinating insects.

In many cases, small-scale projects, such as forest openings, diversify the larger forest landscape and increase the abundance of wildlife well beyond the small footprint of the project.

Describe how the plan uses science-based targeting that leverages or expands corridors and complexes, reduces fragmentation or protects areas identified in the MN County Biological Survey:

DNR's Conservation Agenda, Wildlife Action Plan, Forest Action Plan, SNA Strategic Land Protection Plan (along with specific site management plans), and Section Forest Resource Management Plans, which will guide activities, were developed using the best information and science to identify goals and strategies.

We know quite a bit about the habitat needs of many forest species, including mature forest species such as marten and fisher, and young forest species like woodcock and golden-winged warblers. We have also learned that many of the 'young forest' birds require mature forests during some parts of their life. In some cases, mature forests need enhancements such as prescribed fire to stay productive. Likewise, larger species such as deer and moose need a wide range of habitat types during the different seasons. Researchers across the eastern US have been discussing the loss of oaks from forests since the early 1990s. Lack of prescribed fire is the most often cited reason for declines in oaks in many areas. It's not enough to just have acres of forest on the landscape. The forest habitat type, age, patch size, and pattern on the landscape is probably far more important. We have the science to know what we need to do for habitat enhancement. It's usually the ability to implement that science that is the limiting factor. These dollars would allow us to apply the science to the landscape for the benefit of a wide range of wildlife species.

Which two sections of the Minnesota Statewide Conservation and Preservation Plan are most applicable to this project?

- H1 Protect priority land habitats
- LU10 Support and expand sustainable practices on working forested lands

Which two other plans are addressed in this program?

- Minnesota's Wildlife Action Plan 2015-2025

- Other : Forest Action Plan

Which LSOHC section priorities are addressed in this program?

Forest / Prairie Transition

- Protect, enhance, and restore migratory habitat for waterfowl and related species, so as to increase migratory and breeding success

Metro / Urban

- Protect, enhance, and restore remnant native prairie, Big Woods forests, and oak savanna with an emphasis on areas with high biological diversity

Northern Forest

- Restore forest-based wildlife habitat that has experienced substantial decline in area in recent decades

Southeast Forest

- Restore forest-based wildlife habitat that has experienced substantial decline in area in recent decades

Does this program include leveraged funding?

-

Per MS 97A.056, Subd. 24, Please explain whether the request is supplanting or is a substitution for any previous funding that was not from a legacy fund and was used for the same purpose.

These funds are for additional enhance/restoration work beyond what the DNR is already conducting. These funds are not supplanting or substituting any funds.

Non-OHF Appropriations

Year	Source	Amount
2019	Game and Fish	24196000
2019	Dedicated Accounts	3919000
2019	Heritage Enhancement	3466000

How will you sustain and/or maintain this work after the Outdoor Heritage Funds are expended?

We will select and implement projects to achieve high quality and enduring benefits. Projects have variable lifespans depending on project type, weather and other environmental conditions. Many of the projects are meant to endure for decades, at which point, regular forest management activity through harvest. DNR staff and staff from partner agencies/NGOs will monitor them to if and when additional enhancement are needed. Work will be sustained through internal DNR funds, commercial forest practices, and future requests from the OHF and related external funding.

Actions to Maintain Project Outcomes

Year	Source of Funds	Step 1	Step 2	Step 3
2024	listed above and future OHF requests	monitor results	document results	develop budget for additional work with internal and external funds
2026 and beyond	listed above and future OHF requests	continue monitoring	adapt results	seek additional funding

Activity Details

Requirements

If funded, this program will meet all applicable criteria set forth in MS 97A.056?

Yes

Will restoration and enhancement work follow best management practices including MS 84.973 Pollinator Habitat Program?

Yes

Is the restoration and enhancement activity on permanently protected land per 97A.056, Subd 13(f), tribal lands, and/or public waters per MS 103G.005, Subd. 15?

Yes

Where does the activity take place?

- WMA
- WPA
- SNA
- AMA
- Permanently Protected Conservation Easements
- County/Municipal
- Refuge Lands
- State Wilderness Areas
- State Forests
- Other : national forest, Con-Con lands

Land Use

Will there be planting of any crop on OHF land purchased or restored in this program?

No

Timeline

Activity Name	Estimated Completion Date
implement enhancements	summer 2026
continued monitoring and follow-up management and enhancements	ongoing

Date of Final Report Submission: 11/01/2026

Budget

Budget reallocations up to 10% do not require an amendment to the Accomplishment Plan.

Totals

Item	Funding Request	Antic. Leverage	Leverage Source	Total
Personnel	\$12,300	-	-	\$12,300
Contracts	\$1,202,000	-	-	\$1,202,000
Fee Acquisition w/ PILT	-	-	-	-
Fee Acquisition w/o PILT	-	-	-	-
Easement Acquisition	-	-	-	-
Easement Stewardship	-	-	-	-
Travel	\$6,500	-	-	\$6,500
Professional Services	-	-	-	-
Direct Support Services	\$26,800	-	-	\$26,800
DNR Land Acquisition Costs	-	-	-	-
Capital Equipment	-	-	-	-
Other Equipment/Tools	-	-	-	-
Supplies/Materials	\$90,400	-	-	\$90,400
DNR IDP	-	-	-	-
Grand Total	\$1,338,000	-	-	\$1,338,000

Personnel

Position	Annual FTE	Years Working	Funding Request	Antic. Leverage	Leverage Source	Total
Specs and Techs (EWR)	0.4	4.0	\$10,300	-	-	\$10,300
Project Management (EWR)	0.01	4.0	\$2,000	-	-	\$2,000

Amount of Request: \$1,338,000

Amount of Leverage: -

Leverage as a percent of the Request: 0.0%

DSS + Personnel: \$39,100

As a % of the total request: 2.92%

Easement Stewardship: -

As a % of the Easement Acquisition: -

How will this program accommodate the reduced appropriation recommendation from the original proposed requested amount?

This request was based on multiple projects. We can scale our efforts proportionally.

Describe and explain leverage source and confirmation of funds:

Personnel

Has funding for these positions been requested in the past?

No

Contracts

What is included in the contracts line?

Contracts go to small businesses that have the equipment DNR staff often don't have. These contracts are complementary to Roving Crew efforts.

Travel

Does the amount in the travel line include equipment/vehicle rental?

Yes

Explain the amount in the travel line outside of traditional travel costs of mileage, food, and lodging

I understand and agree that lodging, meals, and mileage must comply with the current MMB Commissioner Plan:

Yes

Direct Support Services

How did you determine which portions of the Direct Support Services of your shared support services is direct to this program?

I used the DNR calculator for OHF/LCCMR requests/appropriations.

Federal Funds

Do you anticipate federal funds as a match for this program?

No

Output Tables

Acres by Resource Type (Table 1)

Type	Wetland	Prairie	Forest	Habitat	Total Acres
Restore	-	-	-	-	-
Protect in Fee with State PILT Liability	-	-	-	-	-
Protect in Fee w/o State PILT Liability	-	-	-	-	-
Protect in Easement	-	-	-	-	-
Enhance	-	-	5,750	-	5,750
Total	-	-	5,750	-	5,750

Total Requested Funding by Resource Type (Table 2)

Type	Wetland	Prairie	Forest	Habitat	Total Funding
Restore	-	-	-	-	-
Protect in Fee with State PILT Liability	-	-	-	-	-
Protect in Fee w/o State PILT Liability	-	-	-	-	-
Protect in Easement	-	-	-	-	-
Enhance	-	-	\$1,338,000	-	\$1,338,000
Total	-	-	\$1,338,000	-	\$1,338,000

Acres within each Ecological Section (Table 3)

Type	Metro/Urban	Forest/Prairie	SE Forest	Prairie	N. Forest	Total Acres
Restore	-	-	-	-	-	-
Protect in Fee with State PILT Liability	-	-	-	-	-	-
Protect in Fee w/o State PILT Liability	-	-	-	-	-	-
Protect in Easement	-	-	-	-	-	-
Enhance	286	861	1,149	-	3,454	5,750
Total	286	861	1,149	-	3,454	5,750

Total Requested Funding within each Ecological Section (Table 4)

Type	Metro/Urban	Forest/Prairie	SE Forest	Prairie	N. Forest	Total Funding
Restore	-	-	-	-	-	-
Protect in Fee with State PILT Liability	-	-	-	-	-	-
Protect in Fee w/o State PILT Liability	-	-	-	-	-	-
Protect in Easement	-	-	-	-	-	-
Enhance	\$53,500	\$202,700	\$270,300	-	\$811,500	\$1,338,000
Total	\$53,500	\$202,700	\$270,300	-	\$811,500	\$1,338,000

Average Cost per Acre by Resource Type (Table 5)

Type	Wetland	Prairie	Forest	Habitat
Restore	-	-	-	-
Protect in Fee with State PILT Liability	-	-	-	-
Protect in Fee w/o State PILT Liability	-	-	-	-
Protect in Easement	-	-	-	-
Enhance	-	-	-	\$232

Average Cost per Acre by Ecological Section (Table 6)

Type	Metro/Urban	Forest/Prairie	SE Forest	Prairie	N. Forest
Restore	-	-	-	-	-
Protect in Fee with State PILT Liability	-	-	-	-	-
Protect in Fee w/o State	-	-	-	-	-

PILT Liability					
Protect in Easement	-	-	-	-	-
Enhance	\$187	\$235	\$235	-	\$234

Target Lake/Stream/River Feet or Miles

Outcomes

Programs in forest-prairie transition region:

- Protected, restored, and enhanced aspen parklands and riparian areas ~ *A number of species are tied to brushland and young aspen forests in these region, including moose, elk, golden-winged warblers, and sharp-tailed grouse. Ongoing surveys and research on these species will allow the DNR to track local and regional responses to these and related efforts.*

Programs in metropolitan urbanizing region:

- A forest land base that contributes to the habitat picture ~ *These efforts will help manage forests in this region to benefit a range of wildlife species, both game and non-game. Ongoing surveys, especially among songbirds, will track long-term changes in bird populations in this region.*

Programs in the northern forest region:

- Healthy populations of endangered, threatened, and special concern species as well as more common species ~ *The DNR and partner agencies conduct a number of wildlife surveys, including moose, deer, ruffed grouse, sharp-tailed grouse, woodcock, and songbird surveys.*

Programs in southeast forest region:

- Healthier populations of endangered, threatened, and special concern species as well as more common species ~ *The non-game program is very active in this region with projects assessing timber rattlesnake and other wildlife populations. And there are the same ongoing wildlife surveys as in the other regions of the state.*

Parcels

For restoration and enhancement programs ONLY: Managers may add, delete, and substitute projects on this parcel list based upon need, readiness, cost, opportunity, and/or urgency so long as the substitute parcel/project forwards the constitutional objectives of this program in the Project Scope table of this accomplishment plan. The final accomplishment plan report will include the final parcel list.

Parcel Information

Sign-up Criteria?

No

Explain the process used to identify, prioritize, and select the parcels on your list:

The DNR uses multiple review processes at different levels to select specific projects. We try to use our statewide Plans as much as possible to guide larger decisions. Individual decisions at the local level are then made by Area Managers and Regional Managers.

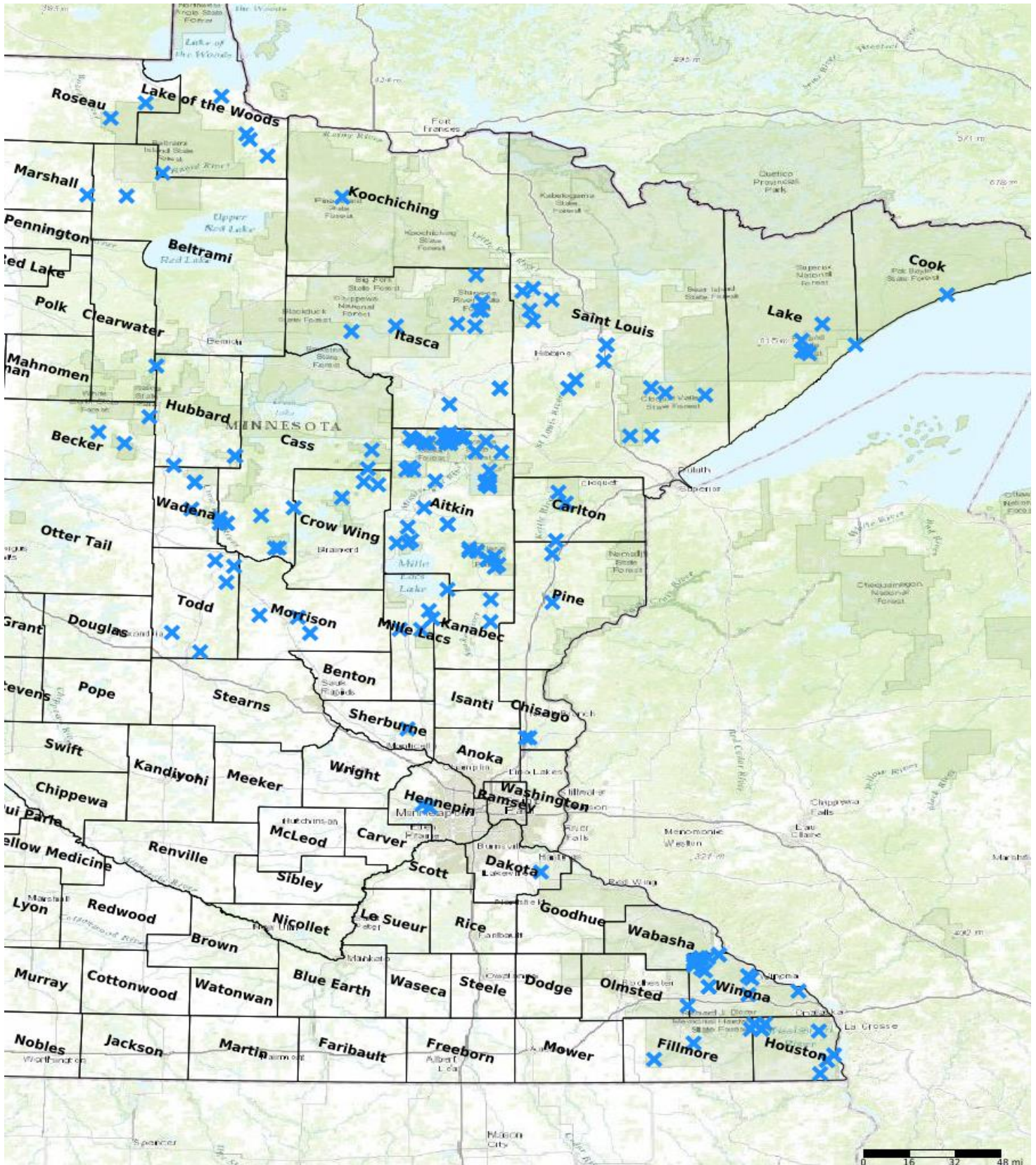
Restore / Enhance Parcels

Name	County	TRDS	Acres	Est Cost	Existing Protection
Savanna SF	Aitkin	05023224	90	\$45,000	Yes
Savanna SF	Aitkin	04923224	5	\$2,500	Yes
Wealthwood SF	Aitkin	04526206	35	\$17,300	Yes
Aitkin WMA	Aitkin	04423202	150	\$55,500	Yes
Aitkin WMA	Aitkin	04423202	300	\$118,500	Yes
Aitkin WMA	Aitkin	04522231	300	\$15,000	Yes
Solana SF	Aitkin	04422217	9	\$1,800	Yes
Solana SF	Aitkin	04524224	4	\$800	Yes
Savanna SF	Aitkin	05122216	24	\$4,800	Yes
Savanna SF	Aitkin	05223226	3	\$600	Yes
Savanna SF	Aitkin	05224222	4	\$800	Yes
Savanna SF	Aitkin	05224223	1	\$200	Yes
Hill River SF	Aitkin	05226220	11	\$2,200	Yes
Savanna SF	Aitkin	04923211	51	\$10,200	Yes
Savanna SF	Aitkin	04923212	14	\$2,800	Yes
Savanna SF	Aitkin	04923213	21	\$4,200	Yes
Savanna SF	Aitkin	04923214	59	\$11,800	Yes
Hill River SF	Aitkin	05026219	18	\$3,600	Yes
Hill River SF	Aitkin	05026221	6	\$1,200	Yes
Solana SF	Aitkin	04523220	5	\$1,000	Yes
Waukenabo SF	Aitkin	04925209	19	\$3,800	Yes
Savanna SF	Aitkin	05123217	4	\$800	Yes
Savanna SF	Aitkin	05224207	33	\$6,600	Yes
Savanna SF	Aitkin	05224216	12	\$2,400	Yes
Savanna SF	Aitkin	05224231	4	\$800	Yes
Savanna SF	Aitkin	05224231	47	\$9,400	Yes
Hill River SF	Aitkin	05225213	13	\$2,600	Yes
Hill River SF	Aitkin	05225213	7	\$1,400	Yes
Hill River SF	Aitkin	05225223	12	\$2,400	Yes
Hill River SF	Aitkin	05225225	17	\$3,400	Yes
Hill River SF	Aitkin	05225231	8	\$1,600	Yes
Hill River SF	Aitkin	05225236	13	\$2,600	Yes
Hill River SF	Aitkin	05226220	20	\$4,000	Yes
Hill River SF	Aitkin	05226236	7	\$1,400	Yes
Hill River SF	Aitkin	05226236	4	\$800	Yes
Aitkin WMA	Aitkin	04423202	150	\$30,000	Yes

Wealthwood SF	Aitkin	04626206	3	\$1,500	Yes
Ripple River WMA	Aitkin	04626232	15	\$7,350	Yes
Hill River SF	Aitkin	05226228	167	\$83,500	Yes
Hill River SF	Aitkin	05226228	7	\$3,250	Yes
Hill River SF	Aitkin	05226228	9	\$4,500	Yes
Wealthwood SF	Aitkin	04527203	21	\$10,350	Yes
Solana SF	Aitkin	04523220	3	\$300	Yes
Savanna SF	Aitkin	05123217	3	\$300	Yes
Savanna SF	Aitkin	05224219	14	\$1,400	Yes
Savanna SF	Aitkin	05224219	5	\$500	Yes
Savanna SF	Aitkin	05224230	1	\$100	Yes
Waukenabo SF	Aitkin	04826236	77	\$38,300	Yes
Solana SF	Aitkin	04422219	145	\$72,500	Yes
Solana SF	Aitkin	04524213	112	\$56,000	Yes
Outside - other Forestry-administered land	Aitkin	04725236	14	\$7,000	Yes
Outside - other Forestry-administered land	Aitkin	04725236	27	\$13,500	Yes
Hill River SF	Aitkin	05026217	21	\$10,500	Yes
Smoky Hills SF	Becker	14037222	21	\$4,200	Yes
Dinner Creek SNA	Becker	14236235	1	\$7,100	Yes
Greenwater Lake SNA	Becker	14138233	1	\$7,100	Yes
Beltrami Island State Forest	Beltrami	15537210	250	\$50,000	Yes
Blackhoof River WMA	Carlton	04220226	550	\$750	Yes
Cloquet Valley State Forest	Carlton	04919231	19	\$14,000	Yes
Fond Du Lac State Forest	Carlton	04819221	1,146	\$9,738	Yes
Outside - other Forestry-administered land	Carlton	04620236	71	\$14,200	Yes
Land OLakes SF	Cass	14025230	2	\$400	Yes
Land OLakes SF	Cass	13926236	11	\$2,200	Yes
Outside - other Forestry-administered land	Cass	13631236	22	\$4,400	Yes
Badoura State Forest	Cass	13532206	200	\$82,800	Yes
Farnham Lake WMA	Cass	13532218	100	\$50,000	Yes
Pillsbury SF	Cass	13430234	5	\$1,000	Yes
Pillsbury SF	Cass	13430235	138	\$27,600	Yes
Outside - other Forestry-administered land	Cass	13532216	6	\$1,200	Yes
Outside - other Forestry-administered land	Cass	13532216	2	\$400	Yes
Outside - other Forestry-administered land	Cass	13629216	7	\$1,400	Yes
Carlos Avery WMA	Chisago	03321208	71	\$35,500	Yes
Carlos Avery WMA	Chisago	03321209	58	\$29,000	Yes
Butterwort Cliffs SNA	Cook	06101232	15	\$27,100	Yes
Caribou Falls WMA	Cook	05806236	103	\$16,860	Yes
Crow Wing SF	Crow Wing	13727226	17	\$3,400	Yes
Emily SF	Crow Wing	13826226	17	\$8,500	Yes
Birchdale WMA	Crow Wing	13825233	200	\$92,000	Yes
Chimney Rock SNA	Dakota	11417231	5	\$13,660	Yes
Lanesboro SF complex	Fillmore	10310220	13	\$20,000	Yes
Rushford SF complex	Fillmore	10404225	153	\$46,000	Yes
Choice WMA	Fillmore	10212221	400	\$280,000	Yes
Izaak Walton League WMA	Goodhue	10511212	80	\$120,000	Yes
Wood-Rill SNA	Hennepin	11823236	7	\$19,100	Yes
Wolsfeld Woods SNA	Hennepin	11823227	10	\$27,310	Yes
Richard J Dorer SF	Houston	10404231	165	\$33,000	Yes
Richard J Dorer SF	Houston	10407218	10	\$5,000	Yes
Richard J Dorer SF	Houston	10407228	22	\$11,000	Yes
Richard J Dorer SF	Houston	10407228	40	\$20,000	Yes
Vinegar Ridge SF Complex	Houston	10407215	150	\$66,000	Yes
Jefferson SF complex	Houston	10104219	50	\$75,000	Yes
Richard J Dorer SF	Houston	10204214	20	\$4,000	Yes
Richard J Dorer SF	Houston	10204228	10	\$2,000	Yes
Richard J Dorer SF	Houston	10204228	10	\$2,000	Yes

Outside - other Forestry-administered land	Hubbard	13935236	6	\$1,200	Yes
Badoura Jack Pine Woodland SNA	Hubbard	13932211	29	\$12,500	Yes
Badoura Jack Pine Woodland SNA	Hubbard	13932211	1	\$7,100	Yes
LaSalle Lake SNA	Hubbard	14535230	1	\$7,100	Yes
George Washington SF	Itasca	06023221	18	\$3,600	Yes
George Washington SF	Itasca	06023203	32	\$6,400	Yes
Bowstring SF	Itasca	14726218	20	\$10,000	Yes
Golden Anniversary SF	Itasca	05424218	27	\$13,500	Yes
George Washington SF	Itasca	06023222	5	\$1,000	Yes
George Washington SF	Itasca	05924216	63	\$12,600	Yes
George Washington SF	Itasca	05923220	4	\$800	Yes
Outside - other Forestry-administered land	Itasca	05927222	20	\$4,000	Yes
Outside - other Forestry-administered land	Itasca	05522216	3	\$600	Yes
Outside - other Forestry-administered land	Itasca	05522216	10	\$2,000	Yes
Outside - other Forestry-administered land	Itasca	05522216	7	\$1,400	Yes
Snake River SF	Kanabec	04223224	6	\$1,200	Yes
Outside - other Forestry-administered land	Kanabec	04123236	128	\$25,600	Yes
Pine Island State Forest	Koochiching	15527203	160	\$28,000	Yes
Finland SF	Lake	05907221	38	\$7,600	Yes
Finland SF	Lake	05708214	19	\$3,800	Yes
Finland SF	Lake	05708210	20	\$4,000	Yes
Finland State Forest	Lake	05708209	8	\$1,500	Yes
Finland SF	Lake	05808221	20	\$10,000	Yes
Lake of the Woods State Forest	Lake of the Woods	15931207	150	\$26,250	Yes
Lake of the Woods State Forest	Lake of the Woods	15931220	150	\$26,250	Yes
Red Lake WMA	Lake of the Woods	15735229	400	\$60,000	Yes
Graceton WMA	Lake of the Woods	16233236	250	\$21,250	Yes
Lake of the Woods State Forest	Lake of the Woods	15830219	400	\$60,000	Yes
Eckvoll WMA	Marshall	15539211	500	\$125,000	Yes
Four Brooks WMA	Mille Lacs	04027221	300	\$76,000	Yes
Outside - other Forestry-administered land	Mille Lacs	04125207	30	\$6,000	Yes
Outside - other Forestry-administered land	Mille Lacs	04325236	26	\$5,200	Yes
Rum River SF	Mille Lacs	04026221	57	\$11,400	Yes
Mille Lacs WMA	Mille Lacs	04125229	10,000	\$84,000	Yes
Mud Lake WMA	Morrison	12931201	66	\$100,000	Yes
Rice-Skunk WMA	Morrison	04031232	70	\$56,000	Yes
Ereaux WMA	Morrison	04131230	86	\$68,800	Yes
Whitewater WMA	Olmsted	10610201	1,100	\$1,084,000	Yes
Whitewater WMA	Olmsted	10610201	150	\$291,000	Yes
General Andrews SF	Pine	04520226	34	\$17,000	Yes
Beltrami Island SF	Roseau	16136216	4	\$800	Yes
Beltrami Island SF	Roseau	16038214	8	\$1,600	Yes
Outside - other Forestry-administered land	Sherburne	03427226	5	\$500	Yes
Outside - other Forestry-administered land	St. Louis	05215216	24	\$4,800	Yes
Cloquet Valley SF	St. Louis	05515216	20	\$2,000	Yes
Cloquet Valley SF	St. Louis	05216216	33	\$3,300	Yes
Cloquet Valley SF	St. Louis	05514230	40	\$4,000	Yes
Cloquet Valley SF	St. Louis	05513236	29	\$2,900	Yes
Sturgeon River SF	St. Louis	06021223	2	\$400	Yes
Sturgeon River SF	St. Louis	05921212	23	\$4,600	Yes
George Washington SF	St. Louis	06223216	48	\$9,600	Yes
Outside - other Forestry-administered land	St. Louis	06121215	7	\$1,400	Yes
Sturgeon River SF	St. Louis	06120236	6	\$1,200	Yes

Outside - other Forestry-administered land	St. Louis	06120207	6	\$1,200	Yes
Outside - other Forestry-administered land	St. Louis	05817228	5	\$1,000	Yes
Outside - other Forestry-administered land	St. Louis	05817228	50	\$10,000	Yes
Outside - other Forestry-administered land	St. Louis	05717229	18	\$3,600	Yes
Outside - other Forestry-administered land	St. Louis	05619236	20	\$4,000	Yes
Outside - other Forestry-administered land	St. Louis	05619236	15	\$3,000	Yes
Outside - other Forestry-administered land	St. Louis	05519215	4	\$800	Yes
Outside - other Forestry-administered land	St. Louis	05519215	6	\$1,200	Yes
Kobliska WMA	Todd	13132204	32	\$13,600	Yes
Owen-Hinz WMA	Todd	12835212	27	\$21,600	Yes
Staples WMA	Todd	13333225	39	\$37,500	Yes
Elgin Woods WMA	Todd	12733217	109	\$71,000	Yes
Philbrook WMA	Todd	13232202	21	\$13,000	Yes
North Germany WMA	Wadena	13634223	80	\$30,400	Yes
Huntersville SF	Wadena	13834236	18	\$3,600	Yes
Huntersville SF	Wadena	13834236	12	\$2,400	Yes
Richard J Dorer SF	Winona	10809204	30	\$6,000	Yes
Outside - other Forestry-administered land	Winona	10710202	61	\$12,200	Yes
Richard J Dorer SF	Winona	10708224	15	\$3,000	Yes
Richard J Dorer SF	Winona	10708214	36	\$7,200	Yes
Richard J Dorer SF	Winona	10608223	26	\$5,200	Yes
Richard J Dorer SF	Winona	10605218	46	\$9,200	Yes
Outside - other Forestry-administered land	Winona	10810234	59	\$11,800	Yes
Outside - other Forestry-administered land	Winona	10810229	8	\$1,600	Yes
Outside - other Forestry-administered land	Winona	10810220	14	\$2,800	Yes
Richard J Dorer SF	Winona	10809204	55	\$11,000	Yes
Outside - other Forestry-administered land	Winona	10810217	14	\$7,000	Yes
Outside - other Forestry-administered land	Winona	10810210	12	\$6,000	Yes
Outside - other Forestry-administered land	Winona	10810216	8	\$4,000	Yes
Whitewater WMA Complex	Winona	10810212	88	\$61,600	Yes



- Protect in Easement
- ▲ Protect in Fee with PILT
- Protect in Fee W/O PILT
- ★ Restore
- ✕ Enhance
- ⊕ Other

Parcel Map
DNR Forest Enhancement
(Data Generated From Parcel List)



Lessard-Sams Outdoor Heritage Council

Comparison Report

Program Title: ML 2021 - DNR Forest Enhancement

Organization: DNR

Manager: Greg Hoch

Budget

Requested Amount: \$3,739,300

Appropriated Amount: \$1,338,000

Percentage: 35.78%

Item	Total Requested		Total Appropriated		Percentage of Request	
	Requested	Leverage	Appropriated	Leverage	Percent of Request	Percent of Leverage
Personnel	\$145,700	-	\$12,300	-	8.44%	-
Contracts	\$3,295,900	-	\$1,202,000	-	36.47%	-
Fee Acquisition w/ PILT	-	-	-	-	-	-
Fee Acquisition w/o PILT	-	-	-	-	-	-
Easement Acquisition	-	-	-	-	-	-
Easement Stewardship	-	-	-	-	-	-
Travel	\$14,800	-	\$6,500	-	43.92%	-
Professional Services	-	-	-	-	-	-
Direct Support Services	\$63,000	-	\$26,800	-	42.54%	-
DNR Land Acquisition Costs	-	-	-	-	-	-
Capital Equipment	-	-	-	-	-	-
Other Equipment/Tools	\$1,200	-	-	-	0.0%	-
Supplies/Materials	\$218,700	-	\$90,400	-	41.34%	-
DNR IDP	-	-	-	-	-	-
Grand Total	\$3,739,300	-	\$1,338,000	-	35.78%	-

How will this program accommodate the reduced appropriation recommendation from the original proposed requested amount?

This request was based on multiple projects. We can scale our efforts proportionally.

Output

Acres by Resource Type (Table 1)

Type	Total Proposed	Total in AP	Percentage of Proposed
Restore	0	-	-
Protect in Fee with State PILT Liability	0	-	-
Protect in Fee w/o State PILT Liability	0	-	-
Protect in Easement	0	-	-
Enhance	15,900	5,750	36.16%

Total Requested Funding by Resource Type (Table 2)

Type	Total Proposed	Total in AP	Percentage of Proposed
Restore	-	-	-
Protect in Fee with State PILT Liability	-	-	-
Protect in Fee w/o State PILT Liability	-	-	-
Protect in Easement	-	-	-
Enhance	\$3,739,300	\$1,338,000	35.78%

Acres within each Ecological Section (Table 3)

Type	Total Proposed	Total in AP	Percentage of Proposed
Restore	0	-	-
Protect in Fee with State PILT Liability	0	-	-
Protect in Fee w/o State PILT Liability	0	-	-
Protect in Easement	0	-	-
Enhance	15,900	5,750	36.16%

Total Requested Funding within each Ecological Section (Table 4)

Type	Total Proposed	Total in AP	Percentage of Proposed
Restore	-	-	-
Protect in Fee with State PILT Liability	-	-	-
Protect in Fee w/o State PILT Liability	-	-	-
Protect in Easement	-	-	-
Enhance	\$3,739,300	\$1,338,000	35.78%