



Lessard-Sams Outdoor Heritage Council

DNR Aquatic Habitat Restoration and Enhancement, Phase 2
Laws of Minnesota 2019 Accomplishment Plan

General Information

Date: 11/01/2022

Project Title: DNR Aquatic Habitat Restoration and Enhancement, Phase 2

Funds Recommended: \$3,208,000

Legislative Citation: ML 2019, 1st Sp. Session, Ch. 2, Art. 1, Sec. 2, subd, 5(g)

Appropriation Language: \$3,208,000 the first year is to the commissioner of natural resources to restore and enhance aquatic habitat in degraded streams and aquatic management areas and to facilitate fish passage. A list of proposed land restorations and enhancements must be provided as part of the required accomplishment plan.

Manager Information

Manager's Name: Jamison Wendel

Title:

Organization: MN DNR

Address: 500 Lafayette Rd. Box 20

City: St. Paul, MN 55155

Email: jamison.wendel@state.mn.us

Office Number: 651-259-5205

Mobile Number:

Fax Number:

Website:

Location Information

County Location(s): Blue Earth, Dakota, Becker, Otter Tail, Wabasha, Le Sueur, Cass, Mille Lacs, Beltrami, Chisago, Kanabec, Pine, Lake, Aitkin, Isanti, Todd, Douglas, Faribault, Renville, Clay, Carlton, St. Louis, Hubbard, Crow Wing, Olmsted, Pope, Marshall, Waseca, Freeborn, Meeker, Brown, Kandiyohi, Redwood, Chippewa, Big Stone, Sherburne, Wright, Scott, Anoka, Washington, Fillmore, Carver, Cook, Goodhue, Clearwater, Winona, Rice and Mower.

Eco regions in which work will take place:

- Northern Forest
- Forest / Prairie Transition
- Prairie
- Metro / Urban
- Southeast Forest

Activity types:

- Restore
- Enhance

Priority resources addressed by activity:

- Habitat

Narrative**Abstract**

The Minnesota Department of Natural Resources (MNDNR) will complete a fish passage project on the Otter Tail River to reconnect eight miles of stream habitat and 96 acres of lake habitat for fish and other aquatic life. We will also restore four miles of stream habitat on a previously straightened portion of Stony Creek. Stream projects were selected from a statewide list, prioritized by factors such as ecological benefit, scale of impact, urgency of completion, and local support. On Aquatic Management Areas, MNDNR will enhance over 900 acres of riparian and terrestrial habitat.

Design and Scope of Work

The Minnesota Department of Natural Resources (MNDNR) annually updates a statewide list of stream habitat projects. Submittals come both from MNDNR staff and from partner organizations. Projects are prioritized based on scale-of-impact, urgency, local support, and critical habitat for rare species. Based on this list, MNDNR and our partners originally proposed three fish passage projects and four channel restorations. Based on allocated funds, we plan to complete our two highest priority projects in need of funding. These projects are modifying the dam on the Otter Tail River at Phelps Mill to allow fish passage, and restoring the stream channel on Stony Creek. Projects will benefit fish such as walleye, smallmouth bass, and northern pike present in these rivers, as well as five mussel species classified as threatened or special concern. If cost savings or other circumstances allow, we will use available funds for our next highest achievable project on the priority list.

The modification of the Phelps Mill Dam was previously funded by the Outdoor Heritage in the ML2016 appropriation. However, the dam owner (Otter Tail County) is now willing to adopt our preferred option of a full modification of the dam rather than the previous option of a partial fishway. The bigger project will make for better fish passage, and will create additional spawning habitat within the created rapids. However, the cost of such a project is higher. An additional \$800,000 from this appropriation will be used to complete the project, allowing us to take full advantage of a \$300,000 US Fish and Wildlife Service grant. The project will create access to eight miles of upstream habitat, and 96 acres of lake habitat. We will not claim those acres as outputs, but instead will claim only 1 acre of direct habitat created.

Stony Brook was straightened over four miles prior to the 1930s to facilitate drainage. We will partner with the Buffalo/Red River Watershed District to restore this reach back into a meandering stream, providing diverse habitats for fish and other aquatic species. The restored stream will be protected within Reinvest In Minnesota easements with surrounding landowners. Easements will be funded by the Bureau of Soil and Water Resources.

We propose to enhance over 900 acres of riparian habitat and associated uplands on 70 Aquatic Management Areas (AMA), costing approximately \$450,000. The DNR manages these lands to protect critical shoreline habitat used by fish spawning, waterfowl, wading birds, reptiles and amphibians. Uplands in these parcels provide a buffer to protect water quality, and habitat for more terrestrial species. Our enhancement work includes shoreline plantings, invasive species control, and prescribed burns. Projects are selected based on management guidance documents that have been written for each AMA.

How does the plan address habitats that have significant value for wildlife species of greatest conservation need, and/or threatened or endangered species, and list targeted species?

Fish passage projects on the Otter Tail River will benefit three state-listed mussel species: black sandshell (special concern), fluted-shell (threatened), and creek heelsplitter (special concern). The dam is currently blocking the upstream movement of juvenile mussels during the life-stage when they live on the gills of fish. Juvenile mussels hitch a ride from the fish, and eventually drop off in habitat where they spend the rest their lives. If fish are blocked from movement, so are mussels. Without connectivity to other reaches of the river, mussels can eventually disappear. This projects will create connectivity to over 8 miles of suitable mussel habitat.

Describe how the plan uses science-based targeting that leverages or expands corridors and complexes, reduces fragmentation or protects areas identified in the MN County Biological Survey:

Our proposal features projects that are intended to reduce fragmentation. Dams and other obstructions in rivers fragment areas of suitable habitat, similar to when pieces of prairie are separated by large areas of row-crop farmland. By removing or modifying barriers in streams, we will allow fish and other aquatic life to move between different patches of habitat that may be critical for their life-processes, such as spawning. Connectivity also acts as a route for recolonization should something catastrophic such as drought happen in one portion of a watershed. We have prioritized fish passage projects that connect large areas of high-quality habitat.

Similarly, our stream channel restoration projects target reaches of river where habitat is poor due past alterations. Lengths of poor habitat can themselves act as barriers to animal movement, where a fish may choose not to migrate through a reach without adequate depth or cover to reach more suitable habitat upstream. Restoring the stream channel removes that "barrier" of poor habitat that fragments the stream. In the process, we also create high-quality habitat within the formerly degraded reach as well.

Which two sections of the Minnesota Statewide Conservation and Preservation Plan are most applicable to this project?

- H5 Restore land, wetlands and wetland-associated watersheds
- H6 Protect and restore critical in-water habitat of lakes and streams

Which two other plans are addressed in this program?

- Minnesota DNR Strategic Conservation Agenda
- National Fish Habitat Action Plan

Which LSOHC section priorities are addressed in this program?

Forest / Prairie Transition

- Protect, enhance, and restore wild rice wetlands, shallow lakes, wetland/grassland complexes, aspen parklands, and shoreland that provide critical habitat for game and nongame wildlife

Metro / Urban

- Protect, enhance, and restore riparian and littoral habitats on lakes to benefit game and nongame fish species

Northern Forest

- Protect shoreland and restore or enhance critical habitat on wild rice lakes, shallow lakes, cold water lakes, streams and rivers, and spawning areas

Prairie

- Protect, enhance, or restore existing wetland/upland complexes, or convert agricultural lands to new wetland/upland habitat complexes

Southeast Forest

- Protect, enhance, and restore habitat for fish, game, and nongame wildlife in rivers, cold-water streams, and associated upland habitat

Does this program include leveraged funding?

-

Per MS 97A.056, Subd. 24, Please explain whether the request is supplanting or is a substitution for any previous funding that was not from a legacy fund and was used for the same purpose.

This request is an acceleration of DNR aquatic habitat work to a level not attainable but for the appropriation.

Non-OHF Appropriations

Year	Source	Amount
2017	Game and Fish, Heritage Enhancement, and Federal Grants	\$3,681,500
2016	Game and Fish, Heritage Enhancement, and Federal Grants	\$3,267,000
2014	Game and Fish, Heritage Enhancement, and Federal Grants	\$3,596,000
2013	Game and Fish, Heritage Enhancement, and Federal Grants	\$4,062,000
2012	Game and Fish, Heritage Enhancement, and Federal Grants	\$2,404,000

How will you sustain and/or maintain this work after the Outdoor Heritage Funds are expended?

For stream channel restoration and fish passage projects, we do not anticipate significant maintenance will be required once vegetation becomes established. Any minor maintenance will be paid for using non-OHF money such as Game and Fish or Heritage Enhancement. For AMA enhancement work, management of vegetation has ongoing costs. DNR uses a mixture of Game and Fish, Heritage Enhancement, and Outdoor Heritage funding to pay for

subsequent maintenance. If OHF money were not available in the future, we would likely reduce the frequency of vegetation maintenance work.

Actions to Maintain Project Outcomes

Year	Source of Funds	Step 1	Step 2	Step 3
Annual	Game and Fish	Inspect project	Control invasives	Make instream adjustments as needed

Activity Details

Requirements

If funded, this program will meet all applicable criteria set forth in MS 97A.056?

Yes

Will restoration and enhancement work follow best management practices including MS 84.973 Pollinator Habitat Program?

Yes

Is the restoration and enhancement activity on permanently protected land per 97A.056, Subd 13(f), tribal lands, and/or public waters per MS 103G.005, Subd. 15 or on lands to be acquired in this program?

Yes

Where does the activity take place?

- AMA
- Permanently Protected Conservation Easements
- County/Municipal
- Public Waters

Land Use

Will there be planting of any crop on OHF land purchased or restored in this program?

No

Timeline

Activity Name	Estimated Completion Date
Design of fish passage and channel restoration projects	March, 2020
Permitting and environmental review of fish passage and channel restoration projects	December, 2020
Construction of fish passage and channel restoration projects	September, 2022
Vegetation maintenance on fish passage and channel restoration projects	June, 2024
Enhancement of riparian areas and associated uplands on Aquatic Management Areas	June, 2024

Date of Final Report Submission: 11/01/2024

Availability of Appropriation: Subd. 7. Availability of Appropriation

Money appropriated in this section may not be spent on activities unless they are directly related to and necessary for a specific appropriation and are specified in the accomplishment plan approved by the Lessard-Sams Outdoor

Heritage Council. Money appropriated in this section must not be spent on indirect costs or other institutional overhead charges that are not directly related to and necessary for a specific appropriation. Unless otherwise provided, the amounts in this section are available until June 30, 2022. For acquisition of real property, the amounts in this section are available until June 30, 2023, if a binding agreement with a landowner or purchase agreement is entered into by June 30, 2022, and closed no later than June 30, 2023. Funds for restoration or enhancement are available until June 30, 2024, or five years after acquisition, whichever is later, in order to complete initial restoration or enhancement work. If a project receives at least 15 percent of its funding from federal funds, the time of the appropriation may be extended to equal the availability of federal funding to a maximum of six years if that federal funding was confirmed and included in the original draft accomplishment plan. Funds appropriated for fee title acquisition of land may be used to restore, enhance, and provide for public use of the land acquired with the appropriation. Public-use facilities must have a minimal impact on habitat in acquired lands.

Budget

Budget reallocations up to 10% do not require an amendment to the Accomplishment Plan.

Totals

Item	Funding Request	Antic. Leverage	Leverage Source	Total
Personnel	-	-	-	-
Contracts	\$3,080,700	\$279,000	US Fish and Wildlife Service and Buffalo/Red River Watershed District	\$3,359,700
Fee Acquisition w/ PILT	-	-	-	-
Fee Acquisition w/o PILT	-	-	-	-
Easement Acquisition	-	-	-	-
Easement Stewardship	-	-	-	-
Travel	-	-	-	-
Professional Services	-	-	-	-
Direct Support Services	\$7,600	-	-	\$7,600
DNR Land Acquisition Costs	-	-	-	-
Capital Equipment	-	-	-	-
Other Equipment/Tools	-	-	-	-
Supplies/Materials	\$119,700	-	-	\$119,700
DNR IDP	-	-	-	-
Grand Total	\$3,208,000	\$279,000	-	\$3,487,000

Amount of Request: \$3,208,000

Amount of Leverage: \$279,000

Leverage as a percent of the Request: 8.7%

DSS + Personnel: \$7,600

As a % of the total request: 0.24%

Easement Stewardship: -

As a % of the Easement Acquisition: -

How will this program accommodate the reduced appropriation recommendation from the original proposed requested amount?

We plan to complete our two highest priority stream projects. The remainder (\$450,000) will be spent on AMA enhancement projects. Professional design services will be included in contracts with partners on stream projects. Increased supplies reflect a better understanding of enhancement work to be done by DNR on AMAs.

Describe and explain leverage source and confirmation of funds:

The Phelps Mill project will leverage \$300,000 of confirmed USFWS grant funds, which will be proportionally split between this appropriation and ML2016, where OH funds were also allocated for this project. The Buffalo/Red River Watershed District has committed \$99,000 in funding toward Stony Creek.

Contracts

What is included in the contracts line?

Contracts for construction of stream projects with Otter Tail County to modify the Phelps Mill Dam, and with Buffalo/Red River Watershed to restore a portion of Stony Creek, and include professional design services provided or contracted by partners. Remaining contracts are with CCM or private vendors for AMA enhancement.

Direct Support Services

How did you determine which portions of the Direct Support Services of your shared support services is direct to this program?

The DNR uses a formula based on direct and necessary costs to support the appropriation.

Federal Funds

Do you anticipate federal funds as a match for this program?

Yes

Are the funds confirmed?

Yes

Is Confirmation Document attached?

[Yes](#)

- Cash : \$300,000

Output Tables**Acres by Resource Type (Table 1)**

Type	Wetland	Prairie	Forest	Habitat	Total Acres
Restore	0	0	0	59	59
Protect in Fee with State PILT Liability	0	0	0	0	0
Protect in Fee w/o State PILT Liability	0	0	0	0	0
Protect in Easement	0	0	0	0	0
Enhance	0	0	0	900	900
Total	0	0	0	959	959

Total Requested Funding by Resource Type (Table 2)

Type	Wetland	Prairie	Forest	Habitat	Total Funding
Restore	-	-	-	\$1,944,600	\$1,944,600
Protect in Fee with State PILT Liability	-	-	-	-	-
Protect in Fee w/o State PILT Liability	-	-	-	-	-
Protect in Easement	-	-	-	-	-
Enhance	-	-	-	\$1,263,400	\$1,263,400
Total	-	-	-	\$3,208,000	\$3,208,000

Acres within each Ecological Section (Table 3)

Type	Metro/Urban	Forest/Prairie	SE Forest	Prairie	N. Forest	Total Acres
Restore	0	0	10	49	0	59
Protect in Fee with State PILT Liability	0	0	0	0	0	0
Protect in Fee w/o State PILT Liability	0	0	0	0	0	0
Protect in Easement	0	0	0	0	0	0
Enhance	88	140	47	201	424	900
Total	88	140	57	250	424	959

Total Requested Funding within each Ecological Section (Table 4)

Type	Metro/Urban	Forest/Prairie	SE Forest	Prairie	N. Forest	Total Funding
Restore	-	-	\$450,000	\$1,494,600	-	\$1,944,600
Protect in Fee with State PILT Liability	-	-	-	-	-	-
Protect in Fee w/o State PILT Liability	-	-	-	-	-	-
Protect in Easement	-	-	-	-	-	-
Enhance	\$83,100	\$862,300	\$29,400	\$127,900	\$160,700	\$1,263,400
Total	\$83,100	\$862,300	\$479,400	\$1,622,500	\$160,700	\$3,208,000

Average Cost per Acre by Resource Type (Table 5)

Type	Wetland	Prairie	Forest	Habitat
Restore	-	-	-	\$32,959
Protect in Fee with State PILT Liability	-	-	-	-
Protect in Fee w/o State PILT Liability	-	-	-	-
Protect in Easement	-	-	-	-
Enhance	-	-	-	\$1,403

Average Cost per Acre by Ecological Section (Table 6)

Type	Metro/Urban	Forest/Prairie	SE Forest	Prairie	N. Forest
Restore	-	-	\$45,000	\$30,502	-
Protect in Fee with State PILT Liability	-	-	-	-	-

Protect in Fee w/o State PILT Liability	-	-	-	-	-
Protect in Easement	-	-	-	-	-
Enhance	\$944	\$6,159	\$625	\$636	\$379

Target Lake/Stream/River Feet or Miles

4

Outcomes

Programs in forest-prairie transition region:

- Protected, restored, and enhanced aspen parklands and riparian areas ~ *Our AMA work will enhance riparian areas in this region. Will assess the amount of native plant cover and the control of invasive plant species as measures of our success.*

Programs in metropolitan urbanizing region:

- Improved aquatic habitat indicators ~ *Our AMA work will enhance riparian areas in this region. Will assess the amount of native plant cover and the control of invasive plant species as measures of our success.*

Programs in the northern forest region:

- Improved aquatic habitat indicators ~ *For the Sucker River and Fredenberg Creek projects, we will evaluate instream habitat as well as brook trout populations to assess success.*

Programs in prairie region:

- Other ~

Programs in southeast forest region:

- Rivers, streams, and surrounding vegetation provide corridors of habitat ~ *We will evaluate instream and riparian habitat measures to evaluate the success of the North Branch Whitewater River restoration.*

Parcels

For restoration and enhancement programs ONLY: Managers may add, delete, and substitute projects on this parcel list based upon need, readiness, cost, opportunity, and/or urgency so long as the substitute parcel/project forwards the constitutional objectives of this program in the Project Scope table of this accomplishment plan. The final accomplishment plan report will include the final parcel list.

Parcel Information

Sign-up Criteria?

No

Explain the process used to identify, prioritize, and select the parcels on your list:

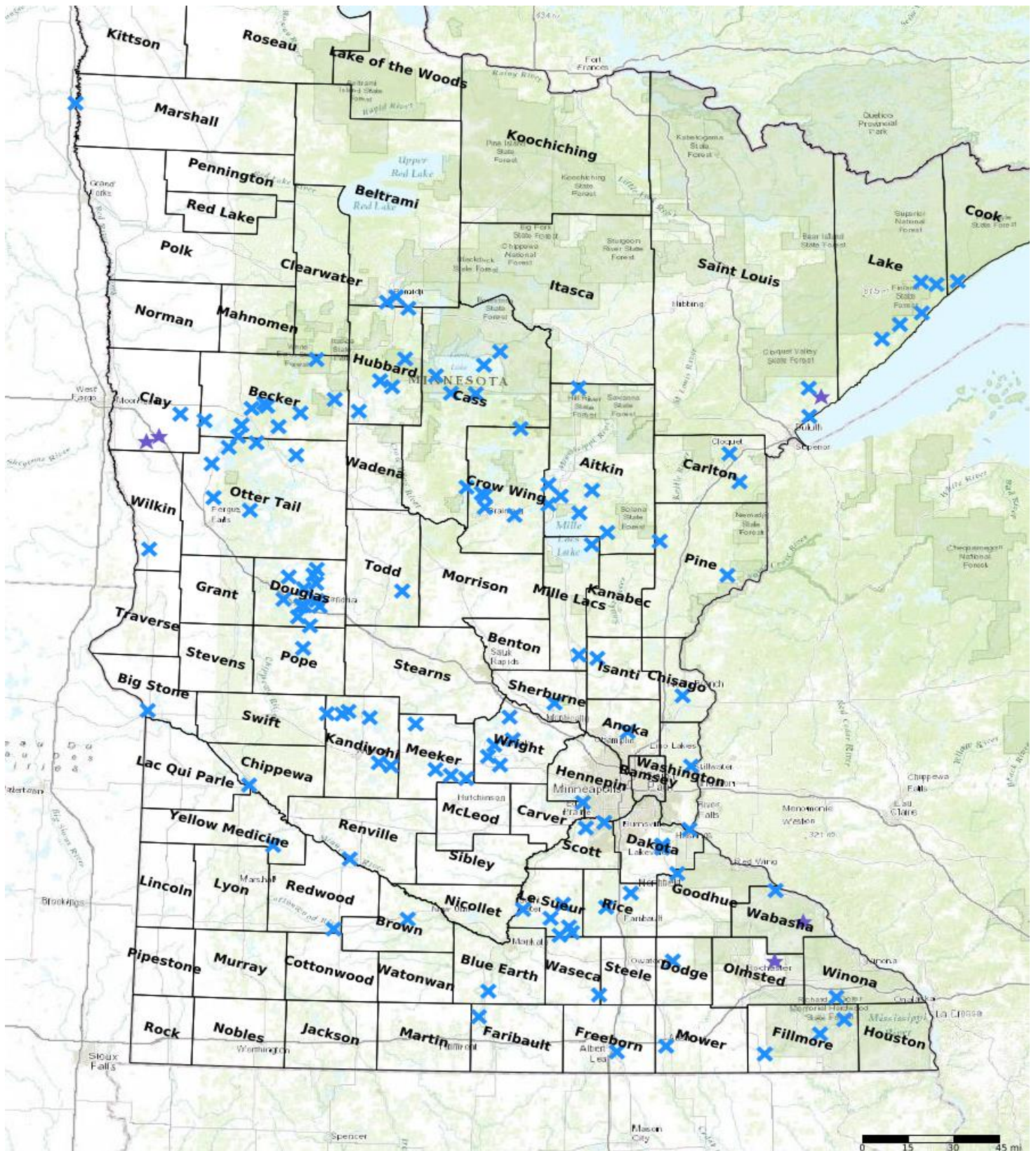
Restore / Enhance Parcels

Name	County	TRDS	Acres	Est Cost	Existing Protection
Spirit Lake AMA	Aitkin	04627224	2	\$2,000	Yes
Mud River AMA	Aitkin	04527205	10	\$10,000	Yes
Cedar Lake AMA	Aitkin	04727232	4	\$2,500	Yes
Long Lake Creek AMA	Aitkin	04625210	5	\$500	Yes
Hill Lake AMA	Aitkin	05226212	32	\$15,000	Yes
Ham Lake AMA	Anoka	03223220	7	\$2,400	Yes
Cotton Lake AMA	Becker	13940203	8	\$5,000	Yes
Bad Medicine Lake AMA	Becker	14237208	1	\$3,000	Yes
Long Lake AMA	Becker	13941211	5	\$3,000	Yes
Detroit Lakes Headquarters	Becker	13841208	30	\$20,000	Yes
Toad Lake AMA	Becker	13938216	40	\$10,000	Yes
Pickereel Lake AMA	Becker	14040233	4	\$5,000	Yes
Hungry Lake AMA	Becker	13839208	8	\$1,500	Yes
Upper Cormorant AMA	Becker	13843205	25	\$10,000	Yes
Straight Lake AMA	Becker	14036220	10	\$10,000	Yes
Bucks Mill AMA	Becker	13841231	10	\$5,000	Yes
Preece Point AMA	Beltrami	14633230	30	\$10,000	Yes
Bemidji Lake South AMA	Beltrami	14633215	4	\$4,000	Yes
Minnesota River Headwaters AMA	Big Stone	12146209	10	\$2,400	Yes
Ida Lake AMA	Blue Earth	10528212	84	\$13,500	Yes
Cottonwood River AMA	Brown	10932203	18	\$4,800	Yes
Blackhoof River AMA	Carlton	04717227	50	\$5,000	Yes
Little Otter Creek AMA	Carlton	04817206	11	\$5,000	Yes
Lotus Lake AMA	Carver	11623201	5	\$14,400	Yes
Woman Lake AMA	Cass	14029201	5	\$5,000	Yes
Larson Lake AMA	Cass	14030203	1	\$100	Yes
Ah Gwah Ching	Cass	14131202	25	\$0	Yes
Buetow AMA	Cass	14228216	5	\$5,000	Yes
Grassy Point AMA	Cass	13529221	11	\$2,500	Yes
Wakan Wakpa AMA	Chippewa	11741213	1	\$2,400	Yes
Sunrise Lake AMA	Chisago	03420217	5	\$10,000	Yes
Stony Creek	Clay	13746202	48	\$1,944,000	Yes
Silver Lake AMA	Clay	13945225	52	\$15,000	Yes
Whisky Creek	Clay	13746218	72	\$3,500,000	Yes
Lost Lake AMA	Clearwater	14327220	5	\$5,000	Yes
Fredenberg Creek	Cook	05805203	1	\$346,500	Yes
Nokassippi River AMA	Crow Wing	04529228	50	\$10,000	Yes

Gilbert Lake AMA	Crow Wing	13428228	50	\$10,000	Yes
North Long Lake AMA	Crow Wing	13428204	30	\$15,000	Yes
Roosevelt AMA	Crow Wing	13826204	100	\$7,500	Yes
Bertha-Moody Lake AMA	Crow Wing	13528232	25	\$10,000	Yes
Gores AMA	Dakota	11517223	10	\$5,000	Yes
South Branch of Vermillion AMA	Dakota	11418229	20	\$20,000	Yes
Vermillion River AMA	Dakota	11418220	80	\$10,000	Yes
Vermillion AMA	Dakota	11418220	4	\$4,000	Yes
Little Lakota AMA	Douglas	12838227	2	\$5,000	Yes
West Rachel Shores AMA	Douglas	12839215	9	\$6,100	Yes
Miltona AMA	Douglas	13037232	20	\$9,600	Yes
Mary Lake AMA	Douglas	12738216	45	\$2,400	Yes
Jessie Lake AMA	Douglas	12837227	11	\$6,200	Yes
Bliss AMA	Douglas	13037221	8	\$4,800	Yes
Tegel's Slough AMA	Douglas	12838226	20	\$10,000	Yes
Geneva Lake AMA	Douglas	12837216	1	\$2,400	Yes
Maple Lake AMA	Douglas	12737231	5	\$2,400	Yes
Lake Carlos Dam	Douglas	12937216	1	\$180,000	Yes
Big Chippewa Lake AMA	Douglas	12939201	5	\$14,600	Yes
Pearson Cove AMA	Douglas	12838227	2	\$2,400	Yes
Ida Lake AMA	Douglas	12938226	5	\$4,800	Yes
Blue Earth AMA	Faribault	10428228	50	\$25,000	Yes
Petersen Hatchery AMA	Fillmore	10408232	20	\$4,800	Yes
Lanesboro Hatchery AMA	Fillmore	10310225	10	\$4,800	Yes
Etna Creek AMA	Fillmore	10213236	5	\$7,400	Yes
Juglans Woods AMA	Freeborn	10221225	10	\$9,600	Yes
Gemini AMA	Goodhue	11217207	48	\$7,200	Yes
Bottle Lake AMA	Hubbard	14134214	3	\$5,000	Yes
Lester Lake AMA	Hubbard	14232206	15	\$10,000	Yes
Grace Lake AMA	Hubbard	14532205	9	\$5,000	Yes
Spider Lake AMA	Hubbard	14133228	5	\$5,000	Yes
Straight River AMA	Hubbard	13935210	5	\$5,000	Yes
Spectacle Lake AMA	Isanti	03625210	10	\$100	Yes
Little Knife AMA	Kanabec	04424228	30	\$15,000	Yes
Elizabeth AMA	Kandiyohi	11833203	10	\$9,600	Yes
Norway Lake AMA	Kandiyohi	12136206	1	\$2,000	Yes
Kasota AMA	Kandiyohi	11934236	4	\$4,800	Yes
Games AMA	Kandiyohi	12235232	2	\$4,800	Yes
Norway Lake AMA	Kandiyohi	12136201	25	\$2,400	Yes
New London Hatchery AMA	Kandiyohi	12134209	1	\$1,500	Yes
Split Rock River AMA	Lake	05509216	200	\$20,000	Yes
Manitou River AMA	Lake	05806209	20	\$10,000	Yes
East Beaver River AMA	Lake	05608221	15	\$5,000	Yes
Baptism River AMA	Lake	05707234	15	\$5,000	Yes
Balsam Lake AMA	Lake	05807203	15	\$5,000	Yes
St. Peter AMA	Le Sueur	11026214	7	\$9,600	Yes
Waterville Hatchery AMA	Le Sueur	10923228	5	\$9,600	Yes
Francis Lake AMA	Le Sueur	10924235	5	\$1,200	Yes
Tetonka Lake AMA	Le Sueur	10923217	4	\$3,600	Yes
Volney Lake AMA	Le Sueur	11024201	2	\$2,400	Yes
German Lake AMA	Le Sueur	11024232	2	\$2,400	Yes
Frank Rose AMA	Marshall	15750230	40	\$10,000	Yes
Minniebelle AMA	Meeker	11831212	16	\$7,000	Yes
North Fork Crow River AMA	Meeker	12132224	10	\$9,600	Yes
Little Wolf AMA	Meeker	11829227	3	\$6,000	Yes
Long Lake AMA	Meeker	11830223	3	\$4,800	Yes
Cedar Creek AMA	Mille Lacs	04325215	114	\$20,000	Yes

Chuck Davis AMA	Mille Lacs	03626203	16	\$15,000	Yes
Mille Lacs AMA	Mille Lacs	04526224	1	\$1,000	Yes
Cedar River AMA	Mower	10218215	34	\$6,000	Yes
North Branch Whitewater River	Olmsted	10712216	12	\$775,000	Yes
Jewett Lake AMA	Otter Tail	13443223	12	\$5,000	Yes
Franklin Lake AMA	Otter Tail	13742222	14	\$5,000	Yes
Toad River AMA	Otter Tail	13738232	20	\$10,000	Yes
Pelican Rapids Dam	Otter Tail	13643222	1	\$450,000	Yes
Otter Tail River at Phelps Mill	Otter Tail	13146229	1	\$400,000	Yes
Lake Seven AMA	Otter Tail	13740207	8	\$5,000	Yes
East Lost Lake AMA	Otter Tail	13341211	25	\$15,000	Yes
Big Pine AMA	Pine	04321208	20	\$5,000	Yes
Barnes Springs AMA	Pine	04118212	40	\$15,000	Yes
Glenwood HQ AMA	Pope	12538211	12	\$19,000	Yes
Whispering Ridge AMA	Redwood	11439232	25	\$30,000	Yes
Sanborn AMA	Redwood	10936227	10	\$9,600	Yes
Beaver Falls AMA	Renville	11335221	5	\$4,800	Yes
Dudley-Kelly AMA	Rice	11021208	2	\$2,400	Yes
Cannon River AMA	Rice	11120215	23	\$12,000	Yes
ODowd Lake AMA	Scott	11522219	3	\$4,800	Yes
Eagle Creek AMA	Scott	11521207	40	\$41,600	Yes
Eagle Lake AMA	Sherburne	03427232	15	\$9,600	Yes
Lester River AMA	St. Louis	05113233	50	\$5,000	Yes
Sucker River	St. Louis	05212230	16	\$770,000	Yes
French River HQ AMA	St. Louis	05213209	50	\$30,000	Yes
Dohn Lake AMA	Todd	12932230	4	\$100	Yes
Miller Creek AMA	Wabasha	11112209	15	\$2,400	Yes
Whitewater Way AMA	Wabasha	10718213	1	\$2,100	Yes
Gorman Creek	Wabasha	10911201	10	\$450,000	Yes
St. Olaf Lake AMA	Waseca	10522213	3	\$2,400	Yes
Browns Creek AMA	Washington	03020221	12	\$4,800	Yes
Coolridge Creek AMA	Winona	10509223	12	\$19,200	Yes
Cokato Lake AMA	Wright	11928214	4	\$4,800	Yes
Indian Lake AMA	Wright	12127201	2	\$4,800	Yes
Granite Lake AMA	Wright	12027230	3	\$4,600	Yes
Ramsey Lake AMA	Wright	12026218	5	\$9,600	Yes
Howard Lake AMA	Wright	11927233	10	\$2,400	Yes

Parcel Map



- Protect in Easement
- ▲ Protect in Fee with PILT
- Protect in Fee W/O PILT
- ★ Restore
- ✕ Enhance
- ⊕ Other