



Lessard-Sams Outdoor Heritage Council

Fisheries Habitat Protection on Strategic North Central Minnesota Lakes - Phase V Laws of Minnesota 2019 Accomplishment Plan

General Information

Date: 08/23/2023

Project Title: Fisheries Habitat Protection on Strategic North Central Minnesota Lakes - Phase V

Funds Recommended: \$3,365,000

Legislative Citation: ML 2019, 1st Sp. Session, Ch. 2, Art. 1, Sec. 2, subd, 5(d)

Appropriation Language: \$3,365,000 the first year is to the commissioner of natural resources for agreements to acquire lands in fee and permanent conservation easements and to restore and enhance wildlife habitat to sustain healthy fish habitat on coldwater lakes in Aitkin, Cass, Crow Wing, and Hubbard Counties. Of this amount, \$841,000 is to Northern Waters Land Trust and \$2,524,000 is to Minnesota Land Trust. Up to \$192,000 to Minnesota Land Trust is to establish a monitoring and enforcement fund as approved in the accomplishment plan and subject to Minnesota Statutes, section 97A.056, subdivision 17. A list of acquisitions must be provided as part of the required accomplishment plan.

Manager Information

Manager's Name: Wayne Ostlie

Title: Director of Land Protection

Organization: Minnesota Land Trust

Address: 2356 University Ave W Suite 240

City: St. Paul, MN 55114

Email: wostlie@mnland.org

Office Number: 6519176292

Mobile Number: 6518943870

Fax Number:

Website: www.mnland.org

Location Information

County Location(s): Crow Wing, Hubbard, Cass and Aitkin.

Eco regions in which work will take place:

- Northern Forest

Activity types:

- Protect in Easement
- Protect in Fee
- Restore
- Enhance

Priority resources addressed by activity:

- Habitat

Narrative

Abstract

The Minnesota Land Trust and the Leech Lake Area Watershed Foundation will protect 603 acres of high priority critical fish habitat and 0.5 mile of shoreline on 16 priority tullibee "refuge" lakes and their associated watersheds through conservation easements and fee title acquisitions. We will restore and enhance 60 acres of associated habitat. A lake's ecosystem and water quality have a high probability of being maintained if less than 25% of its watershed is disturbed. State reports indicate this region could experience significant water quality and fisheries degradation in the coming decades without direct conservation.

Design and Scope of Work

Sustaining a strong angling heritage revolves largely around protecting fisheries habitat. Resurging shoreland development pressures and looming climate change are direct threats to the ecology of Minnesota's lakes. This project will focus on fisheries habitat protection on lakes that have the best biological integrity for a sustained sport fishery. Our protection efforts are focused on tullibee (aka cisco), a preferred forage fish of walleye, northern pike, muskellunge and lake trout. They require cold, well-oxygenated waters, a condition most common in deep water lakes with healthy watersheds. Minnesota DNR Fisheries researchers studied tullibee lakes and designated 68 lakes in Minnesota as the primary "refuge lakes" for tullibee that need protection. Fisheries research has shown that healthy watersheds with intact forests are fundamental to good fish habitat.

The Clean Water Critical Habitat (CWCH) Technical Committee evaluated all tullibee lakes in our project area and prioritized 16 lakes for action. In assigning priorities, the CWCH considered: (1) the ecological value of the lake, (2) the percent of the minor watershed currently protected, (3) the number of parcels in the watershed greater than 20 acres in size, (4) partner organizations available for advising on outreach efforts, and (5) investment by other agencies and organizations to protect lands and watersheds.

Due to the high level of interest in the program and its great success to date, we are applying for a Phase V of this effort. In this phase we will protect strategically important lands with both conservation easements and fee title acquisitions. We will protect approximately 520 acres with conservation easements. The conservation easement partners will include County Soil & Water Districts, MNDNR Fisheries, Minnesota Land Trust and LLAWF, with the Minnesota Land Trust holding the easements. This team will conduct outreach to potential landowners and help evaluate the projects to assure we are prioritizing those projects with the greatest conservation outcomes. In addition, to ensure the best conservation return on the state's investment, landowner willingness to donate a portion of the easement value will be a key component of the parcel's evaluation.

We also propose to secure fee-title acquisitions in Wabedo Lake and Washburn Lake watersheds totaling 116 - 155 acres and 800 - 5100 feet of sensitive shoreland and northern hardwoods with Freshwater Emergent, Freshwater Forest/shrub and Freshwater Pond wetlands.

Finally, we propose to restore and enhance 60 acres of priority shoreland and upland habitat on protected easement and fee title properties to the benefit of the 16 targeted tullibee lakes. Program partners will identify those projects where restoration and enhancement activities will have the greatest impact on impacting the health of these priority lakes.

In this phase, LLAWF will conduct landowner outreach to identify landowners interested in participating in the easement program, and oversee the review of applications; LLAWF will also negotiate and bring the fee title acquisition to conclusion. MLT will manage the grant, negotiate and close all associated conservation easements, and serve as project manager for all R/E projects.

How does the plan address habitats that have significant value for wildlife species of greatest conservation need, and/or threatened or endangered species, and list targeted species?

Tullibee (aka cisco) is the preferred forage fish for walleye, northern pike, muskellunge and lake trout. They require cold, well oxygenated waters - a condition most common in lakes with deep water and healthy watersheds. Tullibee populations are the "canary in the coalmine" for three significant threats to Minnesota's sport fisheries: shoreland development, watershed health and climate warming. Deep, cold water lakes with high quality, well-oxygenated waters and natural, undisturbed land cover along the shorelines and within their watersheds will have the best chance to sustain tullibee populations in the face of these threats and will serve as a "refuge" for the tullibee if annual temperatures increase.

Minnesota DNR Fisheries research studied tullibee lakes and designated 68 lakes in Minnesota as primary "refuge lakes" for tullibee that need protection. Sixteen (16) of these lakes representing 23.5% of the designated "refuge" lakes are located in Crow Wing, Aitkin, Cass and Hubbard counties. These lakes are premier recreational and sport fishery lakes. Fisheries research has shown that healthy watersheds with intact forest are fundamental to good fish habitat. The MN DNR Fisheries Habitat Plan states near shore fish habitat affected by shoreland disturbance can impact fisheries. Maintaining good water quality is critical to sustaining tullibeas as determined by the waters oxygen level and nutrient content. Lakeshore development can negatively impact healthy ecosystems for sport fish and their forage due to increased runoff and physical alteration of shoreland habitat.

Describe how the plan uses science-based targeting that leverages or expands corridors and complexes, reduces fragmentation or protects areas identified in the MN County Biological Survey:

Timothy Cross and Peter Jacobson's "Landscape factors influencing lake phosphorus concentrations across Minnesota" white paper determined that coldwater fish communities are especially vulnerable to eutrophication from increased phosphorus concentrations. Decreases in hypolimnetic oxygen concentrations have direct negative effects on fish (like Tullibee) that physiologically require oxygenated cold water to survive, grow and reproduce. Protection is viewed as the most cost effective strategy when applied to watersheds where human activities have not already significantly elevated phosphorus levels.

Peter Jacobson and Mike Duval in "Protecting Watershed of Minnesota Lakes with Private Forest Conservation Easements: A Suggested Strategy" stated that protecting the forests in these watersheds from development is critical for maintaining water quality in these lakes. While large areas of land in forested portions are under public ownership, a considerable amount is also owned by private individuals in some of our most critical lake

watersheds. These parcels are increasingly being "split up" and sold. Working forest easements allow sustainable timber harvest, but protect the land from further development. Modeling by MN DNR Fisheries research unit suggests that total phosphorus concentrations remain near natural background levels when less than 25% of the lakes watershed is disturbed. The tullibee "refuge" lakes have watersheds with less than 25% disturbed land uses and are good candidates for protection. The report referenced high priority lakes could include very deep lakes with exceptional water quality and support coldwater fish populations like tullibee.

Minnesota DNR Fisheries researchers studied tullibee lakes and designated 68 lakes in Minnesota as the primary "refuge lakes" for tullibee. We focused our protection efforts on the 16 highest quality tullibee lakes that will require modest to moderate levels of land protection to achieve 75% protection levels. Protecting the habitats of tullibee "refuge" lakes along the shoreline and surrounding forest lands is essential to a sustained sport fishery.

Which two sections of the Minnesota Statewide Conservation and Preservation Plan are most applicable to this project?

- H1 Protect priority land habitats
- H2 Protect critical shoreland of streams and lakes

Which two other plans are addressed in this program?

- Long Range Plan for Fisheries Management
- Long Range Plan for Muskellunge and Large Northern Pike Management Through 2020

Which LSOHC section priorities are addressed in this program?

Northern Forest

- Protect shoreland and restore or enhance critical habitat on wild rice lakes, shallow lakes, cold water lakes, streams and rivers, and spawning areas

Outcomes

Programs in the northern forest region:

- Other ~

Does this program include leveraged funding?

Yes

Explain the leverage:

This proposal includes the following funds as leverage to our OHF request:

- Environmental and Natural Resources Trust Fund: LLAWF received an ENRTF grant of \$30,000 to pilot a program to undertake and evaluate the effectiveness of RIM Conservation Easements in a watershed protection context in the Mississippi Headwaters area.
- Landowner donation in the amount of \$450,000 in easement value is proposed based on results obtained in past appropriations.

- Landowner donation in the amount of \$60,500 is proposed for fee acquisitions.
- In 2014, LLAWF and Roosevelt Lake Association conducted a community fundraiser for our Woods Bay fee title acquisition. We will continue this model of fundraising support with Ten Mile lake.

Per MS 97A.056, Subd. 24, Please explain whether the request is supplanting or is a substitution for any previous funding that was not from a legacy fund and was used for the same purpose.

This request will not supplant or substitute previous funding of either Minnesota Land Trust or Leach Lake Watershed Foundation.

Non-OHF Appropriations

Year	Source	Amount
ML2015	ENRTF Award to LLAWF	\$30,000
ML2010	ENRTF Award to LLAWF	\$76,200

How will you sustain and/or maintain this work after the Outdoor Heritage Funds are expended?

LLAWF and MLT are long standing conservation organizations that do not depend on Outdoor Heritage Funds to sustain or maintain our work. The majority of financial support for both LLAWF and MLT must be raised on an annual basis. The work in this proposal allows both organizations to enhance and accelerate ongoing conservation efforts in North Central Minnesota.

The fee-title acquisition will be owned and managed by Cass County or MN DNR. The Minnesota Land Trust will hold the conservation easements acquired. The land protected through these conservation easements will be sustained through the best standards and practices for conservation easement stewardship. The Minnesota Land Trust is a nationally-accredited land trust with a very successful stewardship program that includes annual property monitoring, effective records management, addressing inquiries and interpretations, tracking changes in ownership, investigating potential violations and defending the easement in case of a true violation. In addition, MLT encourages landowners to undertake active ecological management of their properties, provides them with habitat management plans, and works with them over time to secure resources (expertise and funding) to undertake these activities over time.

Actions to Maintain Project Outcomes

Year	Source of Funds	Step 1	Step 2	Step 3
2019 and beyond	MLT Stewardship & Enforcement Fund	Monitor easements annually in perpetuity.	Enforce easement terms as necessary.	-

Activity Details

Requirements

If funded, this program will meet all applicable criteria set forth in MS 97A.056?

Yes

Will county board or other local government approval be formally sought prior to acquisition, per 97A.056 subd 13(j)?**

No

Describe any measures to inform local governments of land acquisition under their jurisdiction:

Both LLAWF and MLT take great pride in keeping local governments aware of and supportive of our

conservation efforts. Our proposed fee title acquisition has local government support. We do not seek local government approval for our Conservation Easements. We keep counties and townships informed of our efforts.

Is the land you plan to acquire (fee title) free of any other permanent protection?

Yes

Is the land you plan to acquire (easement) free of any other permanent protection?

Yes

Who will manage the easement?

The Minnesota Land Trust will manage all easements.

Who will be the easement holder?

The Minnesota Land Trust will hold all easements.

What is the anticipated number of easements (range is fine) you plan to accomplish with this appropriation?

We expect to close on 1-8 easement acquisitions through this grant. The number of easement acquisitions proposed can vary significantly due to the size and cost of targeted parcels. The maximum number of easements is capped at 8 based on the amount of stewardship funding requested.

Will restoration and enhancement work follow best management practices including MS 84.973 Pollinator Habitat Program?

Yes

Is the restoration and enhancement activity on permanently protected land per 97A.056, Subd 13(f), tribal lands, and/or public waters per MS 103G.005, Subd. 15 or on lands to be acquired in this program?

Yes

Where does the activity take place?

- Permanently Protected Conservation Easements

Land Use

Will there be planting of any crop on OHF land purchased or restored in this program?

Yes

Explain what will be planted:

Easement Acquisition:

The purpose of the Minnesota Land Trust's conservation easements is to protect existing high quality natural habitat and to preserve opportunities for future restoration. As such, we restrict any agricultural lands and use on the properties. In cases in which there are agricultural lands associated with the larger property, we will either carve the agricultural area out of the conservation easement, or in some limited cases, we may include a small percentage of agricultural lands if it is not feasible to carve those areas out. In such cases, however, we will not use OHF funds to pay the landowners for that portion of the conservation easement.

Restoration/Enhancement:

Short-term use of agricultural crops is an accepted best practice for preparing a site for prairie restoration. For example, short-term use of soybeans could be used for restorations in order to control weed seedbeds prior to prairie planting. In some cases this necessitates the use of GMO treated products to facilitate herbicide use in order to control weeds present in the seedbank.

Are any of the crop types planted GMO treated?

True

Is this land currently open for hunting and fishing?

No

Will the land be open for hunting and fishing after completion?

Yes

Describe any variation from the State of Minnesota regulations:

We do not anticipate any variations.

Who will eventually own the fee title land?

- County

Land acquired in fee will be designated as a:

- County Forest

What is the anticipated number of closed acquisitions (range is fine) you plan to accomplish with this appropriation?

We expect to close on 1 fee title acquisition through this grant.

Will the eased land be open for public use?

No

Are there currently trails or roads on any of the proposed acquisitions?

Yes

Describe the types of trails or roads and the allowable uses:

Most conservation easements are established on private lands, many of which have driveways, field roads and trails located on them. Often, these established trails and roads are permitted in the terms of the easement and can be maintained for personal use if their use does not significantly impact the conservation values of the property. Creation of new roads/trails or expansion of existing ones is not allowed.

Trails used for timber management purposes exist on the property to be purchased in fee, and will continue to be used as such by Cass County after acquisition. No new trails will be developed. All forest roads are considered open to motorized travel unless posted closed with County Board consent. Motorized and non-motorized use is allowed.

Will the trails or roads remain and uses continue to be allowed after OHF acquisition?

Yes

How will maintenance and monitoring be accomplished?

Conservation Easements: Existing trails and roads for easement properties are identified in the project baseline report and will be monitored annually as part of the Land Trust's stewardship and enforcement protocols. Maintenance of permitted roads/trails in line with the terms of the easement will be the responsibility of the landowner.

Fee Acquisition: For fee title transactions involving Cass County, road and trail maintenance is done on an as needed basis while monitoring is completed by staff forester.

Will new trails or roads be developed or improved as a result of the OHF acquisition?

No

Will the acquired parcels be restored or enhanced within this appropriation?

Yes

A modest amount of R/E funding has been allotted to easements properties acquired through this grant. These funds will enable us to significantly improve the condition and extent of habitat on protected lands, making good projects great.

Timeline

Activity Name	Estimated Completion Date
Fee title acquisition	6/30/2022
Protection of 520 acres via Conservation Easements	6/30/2022
Landowner outreach, consultation, technical assistance and easement preparation	Ongoing through June 2022
Restoration/Enhancement activities concluded	6/30/2022

Date of Final Report Submission: 11/01/2022

Availability of Appropriation: Subd. 7. Availability of Appropriation

Money appropriated in this section may not be spent on activities unless they are directly related to and necessary for a specific appropriation and are specified in the accomplishment plan approved by the Lessard-Sams Outdoor Heritage Council. Money appropriated in this section must not be spent on indirect costs or other institutional overhead charges that are not directly related to and necessary for a specific appropriation. Unless otherwise provided, the amounts in this section are available until June 30, 2022. For acquisition of real property, the amounts in this section are available until June 30, 2023, if a binding agreement with a landowner or purchase agreement is entered into by June 30, 2022, and closed no later than June 30, 2023. Funds for restoration or enhancement are available until June 30, 2024, or five years after acquisition, whichever is later, in order to complete initial restoration or enhancement work. If a project receives at least 15 percent of its funding from federal funds, the time of the appropriation may be extended to equal the availability of federal funding to a maximum of six years if that federal funding was confirmed and included in the original draft accomplishment plan. Funds appropriated for fee title acquisition of land may be used to restore, enhance, and provide for public use of the land acquired with the appropriation. Public-use facilities must have a minimal impact on habitat in acquired lands.

Budget

Budget reallocations up to 10% do not require an amendment to the Accomplishment Plan.

Grand Totals Across All Partnerships

Item	Funding Request	Leverage	Leverage Source	Total
Personnel	\$257,000	-	-	\$257,000
Contracts	\$218,000	-	-	\$218,000
Fee Acquisition w/ PILT	\$124,600	\$12,500	Lake Assoc., Sellers, COLAs and Community Fundraising	\$137,100
Fee Acquisition w/o PILT	\$480,400	\$48,000	Lake Assoc., Sellers, COLAs and Community Fundraising	\$528,400
Easement Acquisition	\$1,743,000	\$450,000	-, Landowner donation of easement value	\$2,193,000
Easement Stewardship	\$192,000	-	-	\$192,000
Travel	\$18,000	-	-	\$18,000
Professional Services	\$230,000	-	-	\$230,000
Direct Support Services	\$86,000	-	-	\$86,000
DNR Land Acquisition Costs	-	-	-	-
Capital Equipment	-	-	-	-
Other Equipment/Tools	\$5,000	-	-	\$5,000
Supplies/Materials	\$11,000	-	-	\$11,000
DNR IDP	-	-	-	-
Grand Total	\$3,365,000	\$510,500	-	\$3,875,500

Partner: LLAWF**Totals**

Item	Funding Request	Leverage	Leverage Source	Total
Personnel	\$90,000	-	-	\$90,000
Contracts	\$40,000	-	-	\$40,000
Fee Acquisition w/ PILT	\$124,600	\$12,500	Lake Assoc., Sellers, COLAs and Community Fundraising	\$137,100
Fee Acquisition w/o PILT	\$480,400	\$48,000	Lake Assoc., Sellers, COLAs and Community Fundraising	\$528,400
Easement Acquisition	-	-	-	-
Easement Stewardship	-	-	-	-
Travel	\$8,000	-	-	\$8,000
Professional Services	\$53,000	-	-	\$53,000
Direct Support Services	\$37,000	-	-	\$37,000
DNR Land Acquisition Costs	-	-	-	-
Capital Equipment	-	-	-	-
Other Equipment/Tools	-	-	-	-
Supplies/Materials	\$8,000	-	-	\$8,000
DNR IDP	-	-	-	-
Grand Total	\$841,000	\$60,500	-	\$901,500

Personnel

Position	Annual FTE	Years Working	Funding Request	Leverage	Leverage Source	Total
LLAWF Staff	0.33	3.0	\$90,000	-	-	\$90,000

Partner: Minnesota Land Trust**Totals**

Item	Funding Request	Leverage	Leverage Source	Total
Personnel	\$167,000	-	-	\$167,000
Contracts	\$178,000	-	-	\$178,000
Fee Acquisition w/ PILT	-	-	-	-
Fee Acquisition w/o PILT	-	-	-	-
Easement Acquisition	\$1,743,000	\$450,000	Landowner donation of easement value	\$2,193,000
Easement Stewardship	\$192,000	-	-	\$192,000
Travel	\$10,000	-	-	\$10,000
Professional Services	\$177,000	-	-	\$177,000
Direct Support Services	\$49,000	-	-	\$49,000
DNR Land Acquisition Costs	-	-	-	-
Capital Equipment	-	-	-	-
Other Equipment/Tools	\$5,000	-	-	\$5,000
Supplies/Materials	\$3,000	-	-	\$3,000
DNR IDP	-	-	-	-
Grand Total	\$2,524,000	\$450,000	-	\$2,974,000

Personnel

Position	Annual FTE	Years Working	Funding Request	Leverage	Leverage Source	Total
Land Trust Personnel	0.59	0.0	\$167,000	-	-	\$167,000

Amount of Request: \$3,365,000

Amount of Leverage: \$510,500

Leverage as a percent of the Request: 15.17%

DSS + Personnel: \$343,000

As a % of the total request: 10.19%

Easement Stewardship: \$192,000

As a % of the Easement Acquisition: 11.02%

How will this program accommodate the reduced appropriation recommendation from the original proposed requested amount?

Outputs were reduced more-or-less proportionately to the funding that was allocated. This proportional allocation was tweaked to enable LLAWF to secure one priority parcel in fee acquisition and conduct effective landowner outreach. MLT's budget will enable up to 8 conservation easements and associated R/E activities.

Describe and explain leverage source and confirmation of funds:

Total leverage proposed through this grant is \$510,500. Leverage of \$60,500 is proposed by LLAWF for fee acquisition through LLAWF fundraising efforts. Leverage of \$450,000 is proposed by MLT for easement acquisition through landowner donation of easement value.

Contracts

What is included in the contracts line?

Minnesota Land Trust - For writing of habitat management plans and restoration/enhancement contracts.

LLAWF - For landowner outreach and prioritization/selection of easement projects, and for negotiation and completion of fee acquisitions.

Easement Stewardship

What is the number of easements anticipated, cost per easement for stewardship, and explain how that amount is calculated?

The Land Trust easement stewardship cost is based on a number of factors, including: 1) easement administration & management, 2) monitoring, 3) updating of monitoring workbooks and baseline documentation reports, 4) encouraging voluntary compliance, 5) addressing potential violations, and 6) legal enforcement. The current cost is set at \$24,000/easement.

Travel

Does the amount in the travel line include equipment/vehicle rental?

Yes

Explain the amount in the travel line outside of traditional travel costs of mileage, food, and lodging

MLT routinely rents cars for travel to easement properties.

I understand and agree that lodging, meals, and mileage must comply with the current MMB Commissioner Plan:

No

Direct Support Services

How did you determine which portions of the Direct Support Services of your shared support services is direct to this program?

In a process that was approved by the MNDNR on March 17, 2017, Minnesota Land Trust determined our direct support services rate to include all of the allowable direct and necessary expenditures that are not captured in other line items in the budget, which is similar to the Land Trust's proposed federal indirect rate. We have applied this DNR-approved rate only to personnel expenses to determine the total amount of direct support services in our budget.

In a process approved by MNDNR on May 24, 2017, Leech Lake Area Watershed Foundation used a simplified allocation methodology that resulted in MNDNR approving a 20% indirect rate of allowable expenses. We anticipate a similar rate for this proposal.

These approved rates do not include costs that were otherwise included in other budget line items.

Federal Funds

Do you anticipate federal funds as a match for this program?

No

Output Tables**Acres by Resource Type (Table 1)**

Type	Wetland	Prairie	Forest	Habitat	Total Acres
Restore	0	0	0	14	14
Protect in Fee with State PILT Liability	0	0	0	20	20
Protect in Fee w/o State PILT Liability	0	0	0	116	116
Protect in Easement	0	0	0	520	520
Enhance	0	0	0	46	46
Total	0	0	0	716	716

Total Requested Funding by Resource Type (Table 2)

Type	Wetland	Prairie	Forest	Habitat	Total Funding
Restore	-	-	-	\$54,000	\$54,000
Protect in Fee with State PILT Liability	-	-	-	\$242,600	\$242,600
Protect in Fee w/o State PILT Liability	-	-	-	\$598,400	\$598,400
Protect in Easement	-	-	-	\$2,389,000	\$2,389,000
Enhance	-	-	-	\$81,000	\$81,000
Total	-	-	-	\$3,365,000	\$3,365,000

Acres within each Ecological Section (Table 3)

Type	Metro/Urban	Forest/Prairie	SE Forest	Prairie	N. Forest	Total Acres
Restore	0	0	0	0	14	14
Protect in Fee with State PILT Liability	0	0	0	0	20	20
Protect in Fee w/o State PILT Liability	0	0	0	0	116	116
Protect in Easement	0	0	0	0	520	520
Enhance	0	0	0	0	46	46
Total	0	0	0	0	716	716

Total Requested Funding within each Ecological Section (Table 4)

Type	Metro/Urban	Forest/Prairie	SE Forest	Prairie	N. Forest	Total Funding
Restore	-	-	-	-	\$54,000	\$54,000
Protect in Fee with State PILT Liability	-	-	-	-	\$242,600	\$242,600
Protect in Fee w/o State PILT Liability	-	-	-	-	\$598,400	\$598,400
Protect in Easement	-	-	-	-	\$2,389,000	\$2,389,000
Enhance	-	-	-	-	\$81,000	\$81,000
Total	-	-	-	-	\$3,365,000	\$3,365,000

Average Cost per Acre by Resource Type (Table 5)

Type	Wetland	Prairie	Forest	Habitat
Restore	-	-	-	\$3,857
Protect in Fee with State PILT Liability	-	-	-	\$12,130
Protect in Fee w/o State PILT Liability	-	-	-	\$5,158
Protect in Easement	-	-	-	\$4,594
Enhance	-	-	-	\$1,760

Average Cost per Acre by Ecological Section (Table 6)

Type	Metro/Urban	Forest/Prairie	SE Forest	Prairie	N. Forest
Restore	-	-	-	-	\$3,857
Protect in Fee with State PILT Liability	-	-	-	-	\$12,130

Protect in Fee w/o State PILT Liability	-	-	-	-	\$5,158
Protect in Easement	-	-	-	-	\$4,594
Enhance	-	-	-	-	\$1,760

Target Lake/Stream/River Feet or Miles

1.0 miles

Parcels

For restoration and enhancement programs ONLY: Managers may add, delete, and substitute projects on this parcel list based upon need, readiness, cost, opportunity, and/or urgency so long as the substitute parcel/project forwards the constitutional objectives of this program in the Project Scope table of this accomplishment plan. The final accomplishment plan report will include the final parcel list.

Parcel Information

Sign-up Criteria?

[Yes - Sign up criteria is attached](#)

Explain the process used to identify, prioritize, and select the parcels on your list:

Restore / Enhance Parcels

Name	County	TRDS	Acres	Est Cost	Existing Protection
Lavender Springs	Crow Wing	04428207	13	\$35,000	Yes
Olander	Hubbard	14132217	60	\$91,000	Yes

Fee Parcels

Name	County	TRDS	Acres	Est Cost	Existing Protection
Wabedo	Cass	14028232	116	\$565,000	No
Washburn Lake watershed	Cass	13927201	19	\$50,000	No

Fee Parcels with Buildings

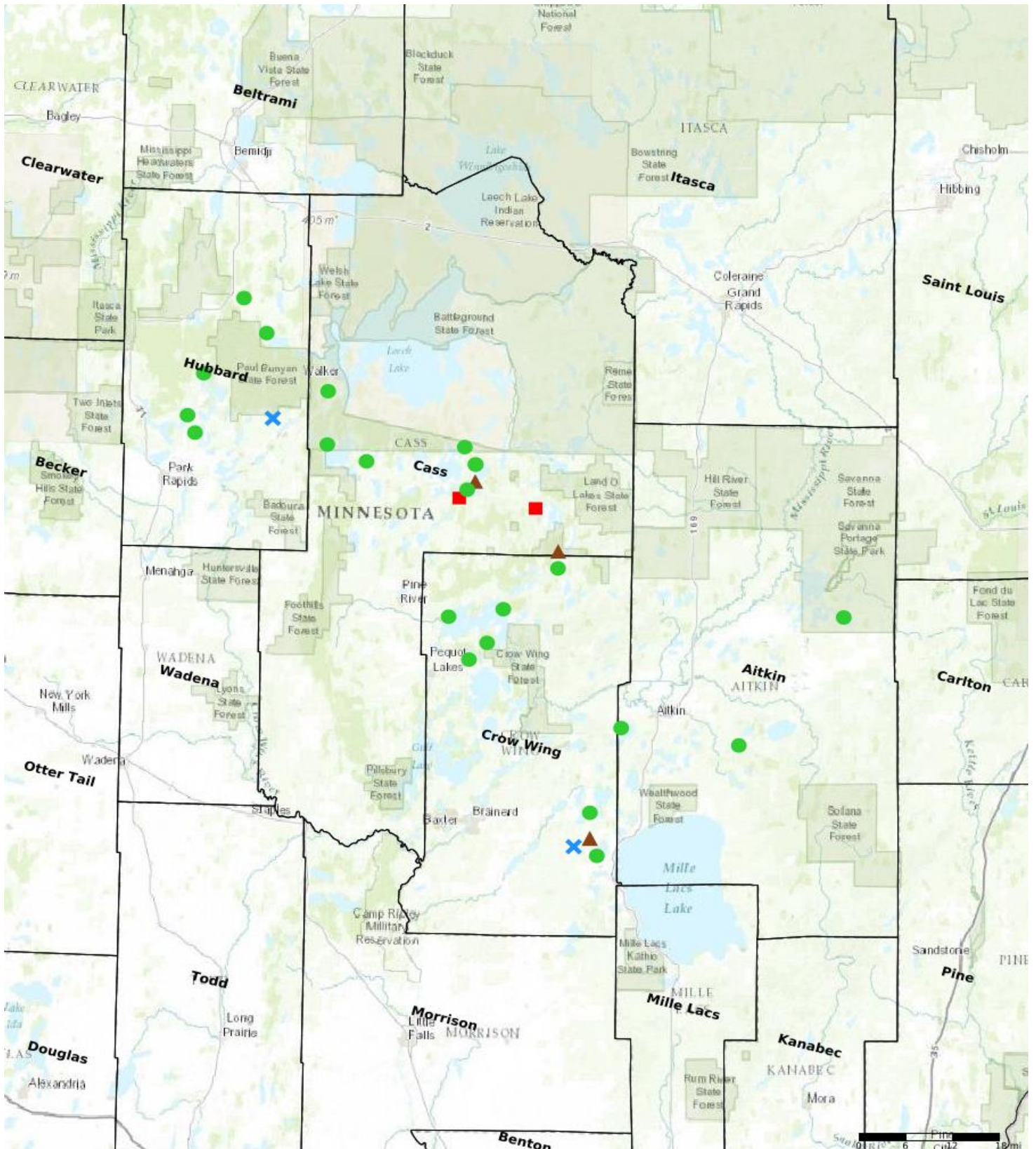
Name	County	TRDS	Acres	Est Cost	Existing Protection	Buildings	Value of Buildings
Roosevelt Lake (Stevens)	Cass	13926233	8	\$28,000	No	2	-
Wabedo Lake	Cass	14028222	20	\$235,000	No	2	\$500
Tamefish Crooked Watershed/Hesitation WMA	Crow Wing	04428204	82	\$262,200	No	2	\$55,300
Tamefish Watershed	Crow Wing	04428204	80	\$250,000	No	1	\$34,000

Easement Parcels

Name	County	TRDS	Acres	Est Cost	Existing Protection
Round Lake	Aitkin	04923225	0	\$0	No
Long Lake	Aitkin	04625210	0	\$0	No
Cedar Lake	Aitkin	04727231	0	\$0	No
Stony Lake (Camp Patmos)	Cass	14030208	44	\$160,200	No
Shurd Lakes (YMCA)	Cass	14028210	465	\$702,000	No
Ten Mile Lake (UCC)	Cass	14131233	104	\$0	No
Cooper Lake	Cass	14028210	39	\$350,000	No
Long Lake	Cass	14231233	0	\$0	No
Girl Lake	Cass	14128233	0	\$0	No
Bass Lake	Cass	14028228	40	\$40,000	No
Roosevelt Lake	Crow Wing	13826209	0	\$0	No
Whitefish Lake	Crow Wing	13728207	0	\$0	No
Crooked Lake (Posner)	Crow Wing	04528221	57	\$286,000	No
Island-Loon Lake	Crow Wing	13727205	0	\$0	No
Borden Lake	Crow Wing	04428215	0	\$0	No
Ossawinamakee Lake	Crow Wing	13628204	0	\$0	No

Star Lake	Crow Wing	13728225	380	\$2,900,000	No
Blue Lake	Hubbard	14134216	110	\$500,000	No
Bad Axe Lake (BSA)	Hubbard	14234223	112	\$480,000	No
Big Sand Lake	Hubbard	14134227	0	\$0	No
Kabekona River (Casson Trust)	Hubbard	14333203	192	\$138,348	No
Kabekona Lake	Hubbard	14332230	0	\$0	No

Parcel Map



- Protect in Easement
- ▲ Protect in Fee with PILT
- Protect in Fee W/O PILT
- ★ Restore
- ✕ Enhance
- ⊕ Other