



## Lessard-Sams Outdoor Heritage Council

Metro Big Rivers Phase 9

Laws of Minnesota 2019 Accomplishment Plan

---

### General Information

**Date:** 03/08/2023

**Project Title:** Metro Big Rivers Phase 9

**Funds Recommended:** \$4,163,000

**Legislative Citation:** ML 2019, 1st Sp. Session, Ch. 2, Art. 1, Sec. 2, subd, 5(b)

**Appropriation Language:** \$4,163,000 the first year is to the commissioner of natural resources for agreements to acquire lands in fee and permanent conservation easements and to restore and enhance natural habitat systems associated with the Mississippi, Minnesota, and St. Croix Rivers and their tributaries in the metropolitan area. Of this amount, \$820,000 is to Minnesota Valley National Wildlife Refuge Trust Inc., \$532,000 is to Friends of the Mississippi River, \$1,061,000 is to Great River Greening, and \$1,750,000 is to Minnesota Land Trust. Up to \$144,000 to Minnesota Land Trust is to establish a monitoring and enforcement fund as approved in the accomplishment plan and subject to Minnesota Statutes, section 97A.056, subdivision 17. A list of proposed land acquisitions and permanent conservation easements must be provided as part of the required accomplishment plan.

### Manager Information

**Manager's Name:** Deborah Loon

**Title:** Executive Director

**Organization:** MN Valley Trust (Metro Big Rivers)

**Address:** 3815 East American Boulevard

**City:** Bloomington, MN 55425

**Email:** dloon@mnvalleytrust.org

**Office Number:** 612-801-1935

**Mobile Number:** 612-801-1935

**Fax Number:**

**Website:** www.mnvalleytrust.org

### Location Information

**County Location(s):** Sibley, Carver, Hennepin, Washington, Sherburne, Scott, Anoka, Isanti, Dakota, Ramsey and Wright.

**Eco regions in which work will take place:**

- Metro / Urban

**Activity types:**

- Protect in Easement
- Protect in Fee
- Restore
- Enhance

**Priority resources addressed by activity:**

- Wetlands
- Prairie
- Forest
- Habitat

**Narrative****Abstract**

Metro Big Rivers Phase 9 will protect 0 acres in fee title and 195 acres in permanent conservation easement, restore 27 acres and enhance 570 acres of priority habitat in the big rivers corridors in the Metropolitan Urbanizing Area (MUA). Metro Big Rivers partners will leverage the OHF at least 16% with partner funds, private funds, local government contributions, and landowner donations of easement value. Significant volunteer engagement will be invested in many habitat enhancement activities, although not technically counted as leverage.

**Design and Scope of Work**

Metro Big Rivers Phase 9 (MBR9) will protect, restore and enhance prioritized wildlife habitat in the MUA, with an emphasis on the Mississippi, Minnesota and St. Croix Rivers and their tributaries. MBR9 benefits wildlife and species in greatest need of conservation, and provides increased public access for wildlife-based recreation. MBR9 partners and projects:

Friends of the Mississippi River (FMR) will restore/enhance 319 acres at 7 projects through invasive species control, seeding and planting native species, mowing and burning:

- Vermillion Linear Park, Dakota County: Restore 27 acres degraded grassland to prairie and enhance 14 acres prairie along 4,263 feet of the Vermillion River
- Hastings River Flats, Dakota County: Enhance 30 acres of prairie and 25 acres oak savanna and floodplain forest along 2,578 feet of the Mississippi River
- Camel's Hump Park and Open Space, Washington County: Enhance 38 acres oak forest and 4 acres prairie
- Settler's Island, Washington County: Enhance 3 acres floodplain forest and wetlands on an island in the Mississippi River with 1,800 feet of shoreline
- Hastings Sand Coulee SNA, Dakota County: Enhance 28 acres prairie
- Gores Pool WMA, Dakota County: Enhance 55 acres forest
- Cottage Grove Ravine Regional Park: Enhance 13 acres prairie and 82 acres forest

Great River Greening (GRG) will enhance 208 acres at 7 projects through invasive species control, tree thinning, prescribed fire, seeding and planting:

- Trout Brook Phase III, Afton, Washington County: Continue re-meandering Trout Brook to improve trout stream habitat and enhance over 11 acres of floodplain adjacent to Phase II
- Lebanon Hills Regional Park Phase III, East Holland Unit, Dakota County: Enhance 70 acres oak savanna and woodland

- Lilydale Bluffs, Ramsey County: Enhance 30 acres of bluff habitat along the Mississippi River
- Springbrook Nature Center, Anoka County: Enhance 56 acres oak savanna
- Minnehaha Creek Big Woods, Hennepin County: Enhance 19 acres maple basswood forest
- Minnehaha Creek Floodplain Meadow Buffer, Hennepin County: Convert 7 acres floodplain old field to a mesic meadow
- Valley Park, Dakota County: Enhance 15 acres oak forest

Minnesota Land Trust (MLT) will protect through perpetual conservation easement 195 acres of priority habitat, including riparian lands, forests, wetlands and grasslands. Projects will be selected through a competitive RFP process that ranks ecological significance and cost (criteria attached). MLT also will enhance 70 acres on private lands already protected through permanent conservation easement. Prioritized properties will be of high ecological significance, adjacent or close to public conservation investments and owned by landowners committed to conservation.

Minnesota Valley Trust (MVT) will restore/enhance 300 acres of oak savanna, forest, prairie and wetland habitat on the Minnesota Valley National Wildlife Refuge and Wetland Management District. Projects will be added to the parcel list as they are identified and selected by MVT and the USFWS.

### **How does the plan address habitats that have significant value for wildlife species of greatest conservation need, and/or threatened or endangered species, and list targeted species?**

Metro Big Rivers projects protect and improve habitats needed by wildlife species in greatest conservation need (SGCN) and other targeted species. Many of Minnesota's forest and grassland SGCNs are migratory. Improving habitat along the central flyway (the three big rivers) will benefit all wildlife species, especially during critical migration periods.

Friends of the Mississippi River (FMR) will conduct significant habitat work on already-protected conservation lands to improve critical habitat types for wildlife and SGCN in the metropolitan area: savanna, prairie, forest and wetland adjacent to the Mississippi River and the Vermillion River, a tributary to the Mississippi. These activities will improve the habitat for all wildlife, especially birds using the Mississippi River migratory corridor and pollinators.

Great River Greening will also conduct significant habitat work on already-protected public conservation lands to improve habitat values for wildlife and SGCN, including birds using the Mississippi River migratory corridor and pollinators. Work will restore and enhance riverine, forest, oak savanna, prairie, and wetland habitat at seven conservation sites in the metro area.

Minnesota Land Trust will target its protection and restoration/enhancement action to priority privately-owned lands to permanently protect high-quality upland and shoreland habitats from fragmentation, development, and other impacts that undermine the viability of SGCN and T&E species. Restoration and enhancement of habitat is proposed for lands already protected through easement.

Minnesota Valley Trust will acquire lands identified through the USFWS Comprehensive Conservation Plan for the Minnesota Valley National Wildlife Refuge. This plan prioritizes lands for high biodiversity, connectivity, and ability to preserve habitat for SGCN. Acquisitions and habitat work increase breeding and migratory habitat, protect ecosystems diversity and improve connectivity and resilience.

## **Describe how the plan uses science-based targeting that leverages or expands corridors and complexes, reduces fragmentation or protects areas identified in the MN County Biological Survey:**

Protection partners prioritize work through science-based processes led by the public entities that own or will own interest in the properties (e.g., MN DNR, USFWS). Plans followed include MBS, RESA, Metropolitan Conservation Corridors, Minnesota State Wildlife Action Plan, and the Comprehensive Conservation Plan for the Minnesota Valley National Wildlife Refuge. Actions are targeted toward building conservation corridors and priority habitat complexes.

The easement partner's competitive RFP process includes a second analysis of all proposed projects submitted by landowners for protection. This assessment evaluates the ecological significance of the proposed parcel, which includes the following three factors:

- Quantity – the size of habitat and/or length of shoreline associated with a parcel, and abundance of Species in Greatest Conservation Need (SGCN) and Threatened & Endangered (T&E) species
- Quality – the condition of the associated habitat and populations of SGCN and T&E species
- Landscape Context – the extent and condition of natural habitat surrounding the parcel, and the degree to which adjacent property has been protected.

Restoration and enhancement partners use science-based criteria to prioritize activities. This includes consideration of the highest quality natural areas (as determined by MBS), as well as prioritization of work within important ecological corridors identified by a coalition of conservation partners and based on rare species and sensitive landscape features. This prioritization ensures that projects reduce fragmentation and link natural areas within already-established corridors. All of the restoration and enhancement sites are located along or near the three big rivers and important tributaries - some of the most important ecological corridors for migrating and sedentary plant and animal life.

## **Which two sections of the Minnesota Statewide Conservation and Preservation Plan are most applicable to this project?**

- H1 Protect priority land habitats
- H5 Restore land, wetlands and wetland-associated watersheds

## **Which two other plans are addressed in this program?**

- Minnesota's Wildlife Action Plan 2015-2025
- Outdoor Heritage Fund: A 25 Year Framework

## **Which LSOHC section priorities are addressed in this program?**

### **Metro / Urban**

- Protect habitat corridors, with emphasis on the Minnesota, Mississippi, and St. Croix rivers (bluff to floodplain)

## Does this program include leveraged funding?

Yes

### Explain the leverage:

Metro Big Rivers Phase 9 will leverage OHF funds by at least 16% with partner funds, private funds, local government contributions, and landowner donations of easement value. Significant volunteer engagement will be invested in many habitat enhancement activities, although not technically counted as leverage.

### Per MS 97A.056, Subd. 24, Please explain whether the request is supplanting or is a substitution for any previous funding that was not from a legacy fund and was used for the same purpose.

This request does not supplant or substitute for any previous funding.

### Non-OHF Appropriations

Year	Source	Amount
2009	Other State Funds	\$741,058
2011	Local Funds	\$295,993
2011	Federal Funds	\$247,907
2011	Private and Other Funds	\$1,578,572
2012	Other State Funds	\$244,449
2012	Local Funds	\$343,234
2012	Federal Funds	\$70,327
2012	Private and Other Funds	\$2,063,388
2013	Other State Funds	\$1,820,284
2013	Local Funds	\$1,166,826
2013	Federal Funds	\$153,780
2009	Local Funds	\$91,972
2013	Private and Other Funds	\$1,253,038
2014	Other State Funds	\$1,648,257
2014	Local Funds	\$516
2014	Private and Other Funds	\$1,931,527
2015	Other State Funds	\$2,128,751
2015	Local Funds	\$1,295,000
2015	Private and Other Funds	\$1,449,198
2016	Other State Funds	\$856,157
2016	Local Funds	\$2,161,500
2016	Private and Other Funds	\$1,609,091
2009	Federal Funds	\$138,338
2017	Other State Funds	\$416,860
2017	Local Funds	\$76,000
2017	Private and Other Funds	\$1,212,156
2009	Private and Other Funds	\$940,884
2010	Other State Funds	\$2,010,658
2010	Local Funds	\$364,460
2010	Federal Funds	\$120,662
2010	Private and Other Funds	\$3,516,521
2011	Other State Funds	\$1,429,358

### How will you sustain and/or maintain this work after the Outdoor Heritage Funds are expended?

All public partners have committed to maintaining the restoration / enhancement habitat improvements after OHF funds are expended. The restore/enhance partners will continue to raise public and private sources to help maintain the work past the grant, and will work cooperatively with partners to ensure the benefits are maintained.

Lands protected through easement will be sustained following best standards and practices. MLT is a nationally-accredited, insured land trust with a stewardship program that includes annual property monitoring, records management, addressing inquiries, tracking ownership changes, investigating potential violations and defending the easement in case of a true violation. In addition, MLT provides habitat management plans to landowners and helps them access resources and technical expertise to undertake restoration, enhancement and property management.

Lands acquired in fee for the Minnesota Valley National Wildlife Refuge will be maintained over the long-term by the USFWS. Habitat restoration/enhancement will be completed by the MVT prior to transfer to the USFWS, which is a critical activity for the future of conservation.

Lands acquired in fee by FMR will be maintained over the long-term by the public partner to which the land will be conveyed. FMR will secure funds to complete initial habitat restoration.

### Actions to Maintain Project Outcomes

Year	Source of Funds	Step 1	Step 2	Step 3
2022-25	FMR, GRG & Local Partners	Monitoring and assessment	Target actions to maintain habitat	Take restorative actions, as needed, to correct any damage
2022-25	MLT & Landowner (R/E Projects)	Monitoring and assessment	Target actions to maintain habitat	Take restorative actions, as needed, to correct any damage
2022-25	MVT & USFWS	Conduct restoration / enhancement activities	Monitoring and assessment	Target actions to maintain habitat
Perpetual	MLT Stewardship & Enforcement Fund	Annual monitoring of completed easements	Enforcement actions, as necessary	-

### Activity Details

#### Requirements

**If funded, this program will meet all applicable criteria set forth in MS 97A.056?**

Yes

**Will county board or other local government approval be formally sought\*\* prior to acquisition, per 97A.056 subd 13(j)?**

No

**Describe any measures to inform local governments of land acquisition under their jurisdiction:**

We will notify local units of government as required by statute.

**Is the land you plan to acquire (fee title) free of any other permanent protection?**

Yes

**Is the land you plan to acquire (easement) free of any other permanent protection?**

Yes

**Who will manage the easement?**

Minnesota Land Trust

**Who will be the easement holder?**

Minnesota Land Trust

**What is the anticipated number of easements (range is fine) you plan to accomplish with this appropriation?**

MLT expects to close on 1-6 easement acquisitions through this grant. The number of easement acquisitions proposed can vary significantly due to the size and cost of targeted parcels. The maximum number of easements is capped at 6 based on the amount of stewardship funding requested.

**Will restoration and enhancement work follow best management practices including MS 84.973 Pollinator Habitat Program?**

Yes

**Is the restoration and enhancement activity on permanently protected land per 97A.056, Subd 13(f), tribal lands, and/or public waters per MS 103G.005, Subd. 15 or on lands to be acquired in this program?**

Yes

**Where does the activity take place?**

- County/Municipal
- Other : Private lands under permanent conservation easement

## Land Use

**Will there be planting of any crop on OHF land purchased or restored in this program?**

No

**Is this land currently open for hunting and fishing?**

No

**Will the land be open for hunting and fishing after completion?**

Yes

**Describe any variation from the State of Minnesota regulations:**

Lands acquired for the Minnesota Valley National Wildlife Refuge (USFWS) will be open for public hunting and fishing according to the National Wildlife Refuge Improvement Act. The lands will be opened through a public process prescribed by the Act. We anticipate hunting and fishing opportunities will be like those already established for lands previously acquired for the Refuge. For specific information, refer to the Refuge's website - [http://www.fws.gov/midwest/MinnesotaValley/documents/hunting\\_regs.pdf](http://www.fws.gov/midwest/MinnesotaValley/documents/hunting_regs.pdf).

**Who will eventually own the fee title land?**

- Federal
- Local Unit of Government

**Land acquired in fee will be designated as a:**

- National Wildlife Refuge

**What is the anticipated number of closed acquisitions (range is fine) you plan to accomplish with this appropriation?**

3-5

**Will the eased land be open for public use?**

No

**Are there currently trails or roads on any of the proposed acquisitions?**

Yes

**Describe the types of trails or roads and the allowable uses:**

Some parcels acquired by MVT for the MN Valley National Wildlife Refuge may have existing field roads or low maintenance trails. The section of the golf course to be acquired by FMR has an unmarked road and trails and golf cart paths.

**Will the trails or roads remain and uses continue to be allowed after OHF acquisition?**

Yes

**How will maintenance and monitoring be accomplished?**

Any pre-existing low-maintenance roads and trails on properties acquired for the MN Valley National Wildlife Refuge (USFWS) may be continued under a plan developed for the purpose of property access for habitat maintenance and public use of the property for wildlife-dependent recreation (e.g., hunting and fishing).

Trails and roads on eased lands are identified in the project baseline report and will be monitored annually as part of MLT's stewardship and enforcement protocols. Maintenance of permitted roads or trails in line with the easement terms will be the responsibility of the landowner.

**Will new trails or roads be developed or improved as a result of the OHF acquisition?**

No

**Will the acquired parcels be restored or enhanced within this appropriation?**

Yes

A modest amount of R/E funding has been allotted to easements acquired through this grant. These funds will enable MLT to significantly improve the condition and extent of habitat on lands protected through easement, making good projects great.

Funds for fee title acquisition through this appropriation are not allocated to restoration or enhancement of parcels acquired.

**Timeline**

Activity Name	Estimated Completion Date
FMR - Restore 27 acres, enhance 292 acres.	June 2024
GRG - Enhance 208 acres.	June 2024
MLT - Protect 195 acres under conservation easements.	June 2022



MLT - Enhance 70 acres.	June 2024
MVT - Restore 50 acres, enhance 250 acres	June 2024

**Date of Final Report Submission:** 11/01/2024

**Availability of Appropriation:** Subd. 7. Availability of Appropriation

Money appropriated in this section may not be spent on activities unless they are directly related to and necessary for a specific appropriation and are specified in the accomplishment plan approved by the Lessard-Sams Outdoor Heritage Council. Money appropriated in this section must not be spent on indirect costs or other institutional overhead charges that are not directly related to and necessary for a specific appropriation. Unless otherwise provided, the amounts in this section are available until June 30, 2022. For acquisition of real property, the amounts in this section are available until June 30, 2023, if a binding agreement with a landowner or purchase agreement is entered into by June 30, 2022, and closed no later than June 30, 2023. Funds for restoration or enhancement are available until June 30, 2024, or five years after acquisition, whichever is later, in order to complete initial restoration or enhancement work. If a project receives at least 15 percent of its funding from federal funds, the time of the appropriation may be extended to equal the availability of federal funding to a maximum of six years if that federal funding was confirmed and included in the original draft accomplishment plan. Funds appropriated for fee title acquisition of land may be used to restore, enhance, and provide for public use of the land acquired with the appropriation. Public-use facilities must have a minimal impact on habitat in acquired lands.

**Budget**

*Budget reallocations up to 10% do not require an amendment to the Accomplishment Plan.*

**Grand Totals Across All Partnerships**

<b>Item</b>	<b>Funding Request</b>	<b>Antic. Leverage</b>	<b>Leverage Source</b>	<b>Total</b>
Personnel	\$323,900	\$114,000	Cities of Cottage Grove and Hastings, Hastings High School Science Program, FMR Stewardship Fund, Karpen Land Fund, CCM, Dakota County, South Washington Watershed District, GRG funds, Cities of Fridley and Mendota Heights, Minnehaha Creek Watershed District	\$437,900
Contracts	\$2,201,000	\$70,000	-, TBD, MN Valley Trust	\$2,271,000
Fee Acquisition w/ PILT	-	-	-	-
Fee Acquisition w/o PILT	-	\$60,000	-, MN Valley Trust	\$880,000
Easement Acquisition	\$1,070,000	\$313,000	-, Private landowners	\$1,383,000
Easement Stewardship	\$72,000	-	-	\$72,000
Travel	\$12,900	\$600	City of Cottage Grove	\$13,500
Professional Services	\$178,600	\$10,000	-, TBD	\$188,600
Direct Support Services	\$76,300	-	-	\$76,300
DNR Land Acquisition Costs	-	-	-	-
Capital Equipment	-	-	-	-
Other Equipment/Tools	\$4,800	-	-	\$4,800
Supplies/Materials	\$223,500	\$51,500	NEEF Grant, MN Valley Trust	\$275,000
DNR IDP	-	-	-	-
<b>Grand Total</b>	<b>\$4,163,000</b>	<b>\$619,100</b>	-	<b>\$5,602,100</b>

**Partner: Minnesota Land Trust (MLT)****Totals**

Item	Funding Request	Antic. Leverage	Leverage Source	Total
Personnel	\$163,400	-	-	\$163,400
Contracts	\$234,300	-	-	\$234,300
Fee Acquisition w/ PILT	-	-	-	-
Fee Acquisition w/o PILT	-	-	-	-
Easement Acquisition	\$1,070,000	\$313,000	Private landowners	\$1,383,000
Easement Stewardship	\$72,000	-	-	\$72,000
Travel	\$7,000	-	-	\$7,000
Professional Services	\$159,000	-	-	\$159,000
Direct Support Services	\$43,900	-	-	\$43,900
DNR Land Acquisition Costs	-	-	-	-
Capital Equipment	-	-	-	-
Other Equipment/Tools	-	-	-	-
Supplies/Materials	\$400	-	-	\$400
DNR IDP	-	-	-	-
<b>Grand Total</b>	<b>\$1,750,000</b>	<b>\$313,000</b>	-	<b>\$2,063,000</b>

**Personnel**

Position	Annual FTE	Years Working	Funding Request	Antic. Leverage	Leverage Source	Total
MLT Staff (program manager, legal staff)	0.6	3.0	\$163,400	-	-	\$163,400

**Partner: Minnesota Valley Trust (MVT)****Totals**

<b>Item</b>	<b>Funding Request</b>	<b>Antic. Leverage</b>	<b>Leverage Source</b>	<b>Total</b>
Personnel	-	-	-	-
Contracts	\$700,000	\$50,000	MN Valley Trust	\$750,000
Fee Acquisition w/ PILT	-	-	-	-
Fee Acquisition w/o PILT	-	\$60,000	MN Valley Trust	\$880,000
Easement Acquisition	-	-	-	-
Easement Stewardship	-	-	-	-
Travel	-	-	-	-
Professional Services	-	-	-	-
Direct Support Services	-	-	-	-
DNR Land Acquisition Costs	-	-	-	-
Capital Equipment	-	-	-	-
Other Equipment/Tools	-	-	-	-
Supplies/Materials	\$120,000	\$50,000	MN Valley Trust	\$170,000
DNR IDP	-	-	-	-
<b>Grand Total</b>	<b>\$820,000</b>	<b>\$160,000</b>	-	<b>\$1,800,000</b>

**Partner: Friends of Mississippi River (FMR)****Totals**

<b>Item</b>	<b>Funding Request</b>	<b>Antic. Leverage</b>	<b>Leverage Source</b>	<b>Total</b>
Personnel	\$49,600	\$25,900	Cities of Cottage Grove and Hastings, Hastings High School Science Program, FMR Stewardship Fund, Karpen Land Fund, CCM	\$75,500
Contracts	\$435,400	-	-	\$435,400
Fee Acquisition w/ PILT	-	-	-	-
Fee Acquisition w/o PILT	-	-	-	-
Easement Acquisition	-	-	-	-
Easement Stewardship	-	-	-	-
Travel	\$2,700	\$600	City of Cottage Grove	\$3,300
Professional Services	-	-	-	-
Direct Support Services	-	-	-	-
DNR Land Acquisition Costs	-	-	-	-
Capital Equipment	-	-	-	-
Other Equipment/Tools	-	-	-	-
Supplies/Materials	\$44,300	\$1,500	NEEF Grant	\$45,800
DNR IDP	-	-	-	-
<b>Grand Total</b>	<b>\$532,000</b>	<b>\$28,000</b>	-	<b>\$560,000</b>

**Personnel**

<b>Position</b>	<b>Annual FTE</b>	<b>Years Working</b>	<b>Funding Request</b>	<b>Antic. Leverage</b>	<b>Leverage Source</b>	<b>Total</b>
FMR Staff (2 ecologists, conservation director, bookkeeper)	0.87	3.0	\$49,600	\$25,900	Cities of Cottage Grove and Hastings, Hastings High School Science Program, FMR Stewardship Fund, Karpen Land Fund, CCM	\$75,500

**Partner: Great River Greening (GRG)****Totals**

Item	Funding Request	Antic. Leverage	Leverage Source	Total
Personnel	\$110,900	\$88,100	Dakota County, South Washington Watershed District, GRG funds, Cities of Fridley and Mendota Heights, Minnehaha Creek Watershed District	\$199,000
Contracts	\$831,300	\$20,000	TBD	\$851,300
Fee Acquisition w/ PILT	-	-	-	-
Fee Acquisition w/o PILT	-	-	-	-
Easement Acquisition	-	-	-	-
Easement Stewardship	-	-	-	-
Travel	\$3,200	-	-	\$3,200
Professional Services	\$19,600	\$10,000	TBD	\$29,600
Direct Support Services	\$32,400	-	-	\$32,400
DNR Land Acquisition Costs	-	-	-	-
Capital Equipment	-	-	-	-
Other Equipment/Tools	\$4,800	-	-	\$4,800
Supplies/Materials	\$58,800	-	-	\$58,800
DNR IDP	-	-	-	-
<b>Grand Total</b>	<b>\$1,061,000</b>	<b>\$118,100</b>	-	<b>\$1,179,100</b>

**Personnel**

Position	Annual FTE	Years Working	Funding Request	Antic. Leverage	Leverage Source	Total
GRG Staff (ecologists, technicians)	0.65	3.0	\$110,900	\$88,100	Dakota County, South Washington Watershed District, GRG funds, Cities of Fridley and Mendota Heights, Minnehaha Creek Watershed District	\$199,000

**Amount of Request:** \$4,163,000**Amount of Leverage:** \$619,100**Leverage as a percent of the Request:** 14.87%**DSS + Personnel:** \$400,200**As a % of the total request:** 9.61%

**Easement Stewardship:** \$72,000

**As a % of the Easement Acquisition:** 6.73%

**How will this program accommodate the reduced appropriation recommendation from the original proposed requested amount?**

Outputs were reduced proportionately to the funding that was allocated. The partners have reduced the number of habitat enhancement projects and number of easement and fee title acquisitions.

**Describe and explain leverage source and confirmation of funds:**

FMR and GRG have secured commitments from local partners, foundations, other private sources and their own organizations as leverage. MLT encourages landowners (and has a track record of success) to make a full or partial donation of easement value. MVT has committed its own private funds as leverage.

**Contracts**

**What is included in the contracts line?**

Contracts for writing habitat management plans, conducting landowner outreach via SWCDs, and completing restoration/enhancement activities.

**Easement Stewardship**

**What is the number of easements anticipated, cost per easement for stewardship, and explain how that amount is calculated?**

MLT easement stewardship cost is based on a number of factors, including: 1) easement administration & management, 2) monitoring, 3) updating of monitoring workbooks and baseline documentation reports, 4) encouraging voluntary compliance, 5) addressing potential violations, and 6) legal enforcement. The current cost is set at \$24,000/easement.

**Travel**

**Does the amount in the travel line include equipment/vehicle rental?**

Yes

**Explain the amount in the travel line outside of traditional travel costs of mileage, food, and lodging**

MLT staff rent vehicles for grant-related purposes.

**I understand and agree that lodging, meals, and mileage must comply with the current MMB Commissioner Plan:**

No

**Direct Support Services**

**How did you determine which portions of the Direct Support Services of your shared support services is direct to this program?**

GRG – In process of working with DNR for an approved rate. For this proposal, under guidance from DNR, the DSS rate for GRG is 8% of personnel, contracts (up to a maximum of \$25k/per project site) and materials.

MLT - Process approved by the DNR on March 17, 2017. MLT's DSS rate includes the allowable direct and necessary expenditures that are not captured in other line items in the budget. This is similar to MLT's proposed federal indirect rate. MLT will apply this DNR-approved rate only to personnel expenses.

These approved rates do not include costs that were otherwise included in other budget line items.

**Federal Funds**

**Do you anticipate federal funds as a match for this program?**

No



Output Tables**Acres by Resource Type (Table 1)**

Type	Wetland	Prairie	Forest	Habitat	Total Acres
Restore	0	27	0	50	77
Protect in Fee with State PILT Liability	0	0	0	0	0
Protect in Fee w/o State PILT Liability	0	0	0	0	0
Protect in Easement	0	0	0	195	195
Enhance	0	152	337	331	820
<b>Total</b>	<b>0</b>	<b>179</b>	<b>337</b>	<b>576</b>	<b>1,092</b>

**Total Requested Funding by Resource Type (Table 2)**

Type	Wetland	Prairie	Forest	Habitat	Total Funding
Restore	-	\$120,600	-	\$150,000	\$270,600
Protect in Fee with State PILT Liability	-	-	-	-	-
Protect in Fee w/o State PILT Liability	-	-	-	-	-
Protect in Easement	-	-	-	\$1,483,600	\$1,483,600
Enhance	-	\$139,100	\$915,800	\$1,353,900	\$2,408,800
<b>Total</b>	<b>-</b>	<b>\$259,700</b>	<b>\$915,800</b>	<b>\$2,987,500</b>	<b>\$4,163,000</b>

**Acres within each Ecological Section (Table 3)**

Type	Metro/Urban	Forest/Prairie	SE Forest	Prairie	N. Forest	Total Acres
Restore	77	0	0	0	0	77
Protect in Fee with State PILT Liability	0	0	0	0	0	0
Protect in Fee w/o State PILT Liability	0	0	0	0	0	0
Protect in Easement	195	0	0	0	0	195
Enhance	820	0	0	0	0	820
<b>Total</b>	<b>1,092</b>	<b>0</b>	<b>0</b>	<b>0</b>	<b>0</b>	<b>1,092</b>

**Total Requested Funding within each Ecological Section (Table 4)**

Type	Metro/Urban	Forest/Prairie	SE Forest	Prairie	N. Forest	Total Funding
Restore	\$270,600	-	-	-	-	\$270,600
Protect in Fee with State PILT Liability	-	-	-	-	-	-
Protect in Fee w/o State PILT Liability	-	-	-	-	-	-
Protect in Easement	\$1,483,600	-	-	-	-	\$1,483,600
Enhance	\$2,408,800	-	-	-	-	\$2,408,800
<b>Total</b>	<b>\$4,163,000</b>	<b>-</b>	<b>-</b>	<b>-</b>	<b>-</b>	<b>\$4,163,000</b>

**Average Cost per Acre by Resource Type (Table 5)**

Type	Wetland	Prairie	Forest	Habitat
Restore	-	\$4,466	-	\$3,000
Protect in Fee with State PILT Liability	-	-	-	-
Protect in Fee w/o State PILT Liability	-	-	-	-
Protect in Easement	-	-	-	\$7,608
Enhance	-	\$915	\$2,717	\$4,090

**Average Cost per Acre by Ecological Section (Table 6)**

Type	Metro/Urban	Forest/Prairie	SE Forest	Prairie	N. Forest
Restore	\$3,514	-	-	-	-
Protect in Fee with State PILT Liability	-	-	-	-	-

Protect in Fee w/o State PILT Liability	-	-	-	-	-
Protect in Easement	\$7,608	-	-	-	-
Enhance	\$2,937	-	-	-	-

### Target Lake/Stream/River Feet or Miles

3 miles

### Outcomes

#### Programs in metropolitan urbanizing region:

- A network of natural land and riparian habitats will connect corridors for wildlife and species in greatest conservation need ~ *Partners work together to identify priority lands using existing data and public plans, then coordinate protection, restoration and enhancement activities in those priority areas. Work builds upon prior phases and is intended to continue into the future for maximum impact. Mapping shows progress in connecting corridors. Species collections and counts measure impact of activities over time on wildlife and species of greatest conservation need.*

## Parcels

*For restoration and enhancement programs ONLY: Managers may add, delete, and substitute projects on this parcel list based upon need, readiness, cost, opportunity, and/or urgency so long as the substitute parcel/project forwards the constitutional objectives of this program in the Project Scope table of this accomplishment plan. The final accomplishment plan report will include the final parcel list.*

### Parcel Information

#### Sign-up Criteria?

No

**Explain the process used to identify, prioritize, and select the parcels on your list:**

### Restore / Enhance Parcels

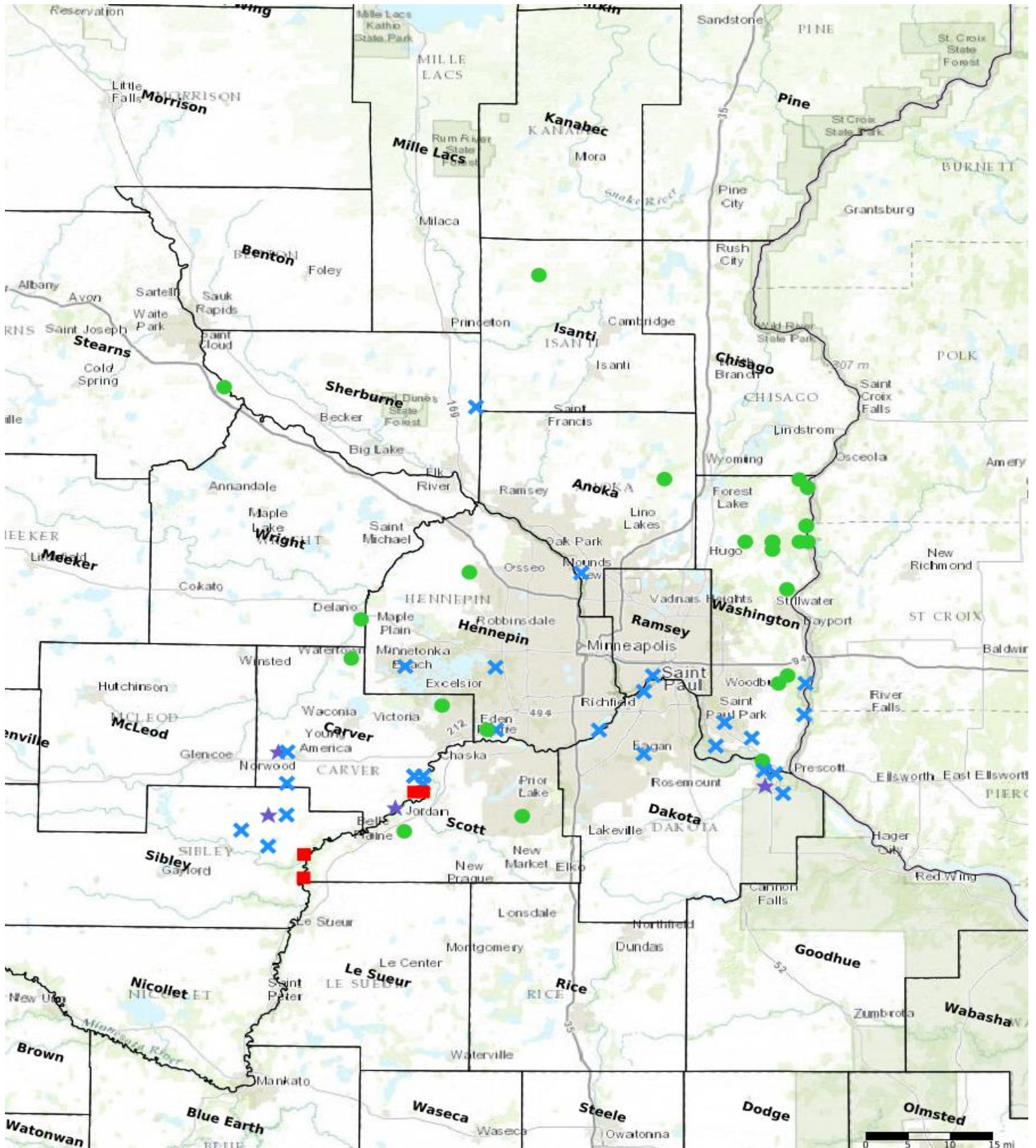
Name	County	TRDS	Acres	Est Cost	Existing Protection
GRG - Springbrook Nature Center Phase III	Anoka	03024203	56	\$49,000	Yes
MVT - Rapids Lake Unit 1 (North)	Carver	11524225	38	\$62,000	Yes
MVT - Tiger Lake WMA	Carver	11526209	53	\$75,000	Yes
MVT - Tiger Lake WPA	Carver	11526210	30	\$45,000	Yes
MVT - Perbix WPA	Carver	11526234	87	\$65,000	Yes
MVT - Rapids Lake Unit 3 (Lundquist)	Carver	11523231	77	\$50,000	Yes
MVT - Rapids Lake Unit (multiple FWS parcels)	Carver	11523230	111	\$110,000	Yes
MVT - San Francisco Unit (Belter)	Carver	11424215	20	\$81,000	Yes
MVT - Rapids Lake Unit 2 (Anderson/Lenzen, DNR, FWS)	Carver	11524225	150	\$134,000	Yes
FMR - Gores Pool WMA	Dakota	11517222	55	\$44,800	Yes
FMR - Hastings River Flats	Dakota	11517221	55	\$81,300	Yes
FMR - Vermillion Linear Park	Dakota	11517233	41	\$128,500	Yes
FMR - Hastings Sand Coulee SNA	Dakota	11417202	28	\$16,570	Yes
GRG - Valley Park	Dakota	02823223	15	\$57,500	Yes
GRG - Lebanon Hills Parks: Holland Lake Unit	Dakota	027230235	70	\$341,000	Yes
GRG - Minnehaha Creek Floodplain Meadow Buffer	Hennepin	11722216	7	\$23,000	Yes
MVT - Upgrala Unit	Hennepin	11622228	34	\$50,000	Yes
GRG - Minnehaha Creek Big Woods	Hennepin	11724214	19	\$50,000	Yes
MVT - Long Meadow Lake Unit (Old Cedar to Bass Ponds)	Hennepin	02724213	13	\$20,000	Yes
GRG - Lilydale Bluffs	Ramsey	02823212	15	\$53,000	Yes
MLT - Jannusch (Enhancement)	Sherburne	03426224	55	\$167,000	Yes
MVT - Mud Lake WPA	Sibley	11426220	180	\$100,000	Yes
MVT - Hartung WPA	Sibley	11427235	30	\$10,000	Yes
MVT - Dehning WPA	Sibley	11326208	50	\$20,000	Yes
MVT - Redhead WPA	Sibley	11426222	50	\$20,000	Yes
GRG - Trout Brook Afton Phase III	Washington	02720202	11	\$417,000	Yes
FMR - Camels Hump Park and Open Space	Washington	02721208	42	\$75,000	Yes
FMR - Settlers Island	Washington	02721230	3	\$31,800	Yes
MLT - Johnson (Enhancement)	Washington	02820214	15	\$43,000	Yes
FMR - Cottage Grove Ravine Regional Park	Washington	02721223	95	\$130,200	Yes

### Protect Parcels

Name	County	TRDS	Acres	Est Cost	Existing
------	--------	------	-------	----------	----------

					Protection
MLT - Sunrise River 3	Anoka	03222204	46	\$120,000	No
MVT - Rapids Lake Unit Addition, MN Valley National Wildlife Refuge	Carver	11423206	118	\$1,062,000	No
MLT - Oak Lake 2	Carver	11725211	35	\$100,000	-
MLT - Lake Minnewashta	Carver	11623209	75	\$3,000,000	No
MVT - San Francisco Unit Addition, Minnesota Valley National Wildlife Refuge	Carver	11424201	168	\$588,000	No
MLT - Rush Creek	Hennepin	11923213	80	\$220,000	No
MLT - Minnesota River	Hennepin	11622229	9	\$350,000	No
MLT - Stanchfield Creek 1	Isanti	03724230	200	\$20,000	No
MVT - Blakely Unit Addition, MN Valley National Wildlife Refuge	Scott	11326236	100	\$300,000	No
MLT - Cleary Lake	Scott	11422224	150	\$500,000	No
MLT - Sand Creek (Norris)	Scott	11424235	85	\$0	-
MLT - Mississippi River	Sherburne	03430208	60	\$350,000	No
MVT - Jessenland Unit Addition, MN Valley National Wildlife Refuge	Sibley	11326213	100	\$300,000	No
MLT - Keystone Woods (Haas)	Washington	03121213	69	\$395,000	No
MLT - Terrapin Lake 2	Washington	03120216	78	\$300,000	No
MLT - Valley Creek 2	Washington	02820209	28	\$250,000	No
MLT - Valley Creek (Berggren)	Washington	02820217	18	\$445,000	No
MLT - Silver Creek	Washington	03020216	46	\$500,000	No
MLT - St. Croix - Marine 1	Washington	03119206	8	\$660,000	No
MLT - Tanglewood Corridor	Washington	03120213	103	\$1,100,000	No
MLT - Terrapin Lake 3	Washington	03120221	78	\$390,000	No
MLT - Scandia	Washington	03220201	30	\$0	No
MLT - Mississippi River	Washington	02621201	60	\$600,000	No
MLT - St. Croix River	Washington	03219207	40	\$100,000	No
MLT - Carnelian Creek	Washington	03120216	20	\$100,000	No
MLT - Saint Croix River (Science Museum of Minnesota)	Washington	03119218	36	\$315,000	No
St. Croix - Marine 1	Washington	03119206	8	\$660,000	No
MLT - Crow River	Wright	11825213	70	\$100,000	No

### Parcel Map



- Protect in Easement
- Protect in Fee with PILT
- Protect in Fee W/O PILT
- ★ Restore
- ✕ Enhance
- ⊕ Other