



Lessard-Sams Outdoor Heritage Council

Minnesota Forest Recovery Project: Phase I
Laws of Minnesota 2019 Final Report

General Information

Date: 12/13/2022

Project Title: Minnesota Forest Recovery Project: Phase I

Funds Recommended: \$1,058,000

Legislative Citation: ML 2019, 1st Sp. Session, Ch. 2, Art. 1, Sec. 2, subd, 3(f)

Appropriation Language: \$1,058,000 the first year is to the commissioner of natural resources for an agreement with The Nature Conservancy to enhance degraded forests in Beltrami, Cass, Cook, Itasca, Lake, and St. Louis Counties. A list of enhancements must be provided as part of the required accomplishment plan.

Manager Information

Manager's Name: Jim Manolis

Title: Resilient Forests Program Director

Organization: The Nature Conservancy

Address: 1101 West River Parkway

City: Minneapolis, MN 55415

Email: jim.manolis@tnc.org

Office Number: 612-331-0796

Mobile Number: 612-810-5400

Fax Number: 612/331-0770

Website: <https://www.nature.org/en-us/about-us/where-we-work/united-states/minnesota/>

Location Information

County Location(s): Lake, Cass, Itasca, St. Louis, Cook and Beltrami.

Eco regions in which work will take place:

- Northern Forest

Activity types:

- Enhance

Priority resources addressed by activity:

- Forest

Narrative

Summary of Accomplishments

The Minnesota Forest Recovery Project completed habitat enhancement on 5519 unique acres of public lands in Lake, Cass, Itasca, St. Louis, Cook, and Beltrami Counties. Multiple treatments on some parcels ensured success of enhancement efforts. Enhancement treatments occurred on 9441 acres: 397 acres of site preparation for tree planting and natural tree regeneration; 1498 acres of tree planting; 742,733 trees planted; 1065 acres of brush saw release removing competing vegetation from planted and naturally regenerating desired tree species; 5024 acres of budcapping and tree shelter deployment to protect seedlings from deer-browse and snowshoe hare; 1457 acres of prescribed burns.

Process & Methods

The Nature Conservancy engaged agency land management staff from partner organizations across the 6 county work area to plan projects and select parcels that were ready for work or seen as the highest priority use of these funds. Once the appropriate treatments were determined for the parcel (see above site prep, tree planting, release, browse protection, prescribed burning), The Nature Conservancy ordered necessary supplies and contracted the labor to accomplish the work. On the ground supervision and administration of contracts was preformed collaboratively between The Nature Conservancy and the public agency land managers. The Nature Conservancy collected and managed all of the data related to work completed on each parcel and reported those accomplishments back to the public agency land managers along with specifics on methods and other details of the work on each parcel.

How did the program address habitats of significant value for wildlife species of greatest conservation need, threatened or endangered species, and/or list targeted species?

The program addressed Species of Greatest Conservation Need in two main ways. First, it addressed Objective 1 of the State Wildlife Action Plan: "Within the Wildlife Acton Network, maintain and enhance the resilience of the habitats upon which Species in Greatest Conservation Need (SGCN) and other wildlife depend." The habitat enhancement projects increased forest diversity that will help maintain or enhance resilience. The majority of the parcels are within higher ranking areas of the Wildlife Action Network. Second, specific treatments carried out by this project will benefit at least 20 SGCNs. For example, treatments that increase long-lived conifer abundance will benefit:

- Evening Grosbeak
- Olive-sided Flycatcher
- Spruce Grouse
- Purple Finch
- Connecticut Warbler
- Black-backed Woodpecker
- Winter Wren
- Moose
- Boreal Owl
- Canada Lynx

Treatments that create young forest conditions will benefit:

- Veery
- Wood Thrush
- Golden-winged Warbler
- Moose

Gap creation and planting in riparian areas will benefit:

- Veery
- Black-billed Cuckoo
- Olive-sided Flycatcher
- Common Merganser
- Winter Wren
- Four-toed salamander
- Eastern red-backed salamander
- Coaster Brook Trout
- Lake Sturgeon

How did the program use science-based targeting that leveraged or expanded corridors and complexes, reduced fragmentation, or protected areas in the MN County Biological Survey.

We used a combination of GIS data layers to prioritize sites that will enhance corridors and complexes, limit fragmentation, and enhance priority areas identified by the MN Biological Survey. These data layers include the Minnesota Wildlife Action Network, Minnesota Biological Survey Biodiversity significance ranks, existing areas of collaborative focus identified by The Nature Conservancy and partners, and areas with poor forest stocking identified by agencies. For the initial pool of sites that we considered for this proposal, we used a GIS overlay approach of these different data sets to choose sites that meet partner priorities and meet LSOHC Northern Forest Section priorities. LSHOC priorities that were weighted most heavily included high-ranking locations within the Wildlife Action Network (indicating value for Species of Greatest Conservation Need and high-ranking areas identified by the Minnesota Biological Survey) and proximity to water (indicating value for cold-water lakes and watersheds).

In addition, we used a new data layer developed by a multi-state initiative called “Conserving Nature’s Stage.” Pioneered and led by TNC, this approach maps and ranks habitat connectivity and habitat resilience across large regions. If this project is funded, we will also incorporate a LiDAR derived assessment of forest structure that we are developing in partnership with the US Forest Service to identify areas of greatest restoration need.

Explain Partners, Supporters, & Opposition

Sites included in this proposal are on US Forest Service – Superior and Chippewa National Forests, MNDNR, Lake County, Beltrami County, and St. Louis County lands. We work with and provide leadership to collaborative efforts including the Minnesota Forest Resources Council Landscape Committees, the Minnesota Forest Wildlife Habitat Collaborative, emerging all-lands collaboratives with the National Forests that utilize Stewardship and Good Neighbor Authorities, and the North Shore, Manitou, Sand-Lake Seven Beavers collaboratives. Other partners include soil and water conservation districts, the American Bird Conservancy, the Minnesota Deer Hunters Association, The Minnesota Land Trust, Trout Unlimited, the Ruffed Grouse Society, and the US Fish and Wildlife Service.

Exceptional challenges, expectations, failures, opportunities, or unique aspects of program

The long-standing and well-developed partnership between TNC, land management agencies and other non-government organizations in Northern Minnesota is the most important aspect of our work and allows us to work at a large enough scale to make a difference. Threats to forest habitat often occur at large scales crossing many ownerships. The trust we’ve developed allows quick movement from planning to implementation of projects efficiently. We are also able to work through many logistical challenges together. COVID-19 caused some setbacks that we couldn’t solve like tree nurseries being unable to do the labor-intensive lifting and packing of trees. However, with some safety changes to delivery of frozen containerized seedlings, implementing planting crew safety protocols, re-working allocation of seedlings to parcels, we were able to plant the high priority parcels. The

following Spring we recovered from the COVID impacts and got back on track. Strong partnerships allowed us to persevere.

What other fund may contribute to this program?

- Other : Private Contributions to TNC, US Forest Service Funds and in-kind work.

How were the funds used to advance the program?

Private TNC funds were used to cover a variety of costs of supporting activities like contracted GIS data management, contracted field administration of labor projects by consulting foresters, and paying for habitat enhancement activities on complimentary acres beyond what LSOHC has funded. The US Forest Service implemented prescribed burns on the Chippewa National Forest. Some of that work was reimbursed by the grant but supporting activities were covered by USFS. Similarly, many agencies provided in-kind support of staff time for planning and administration of work in the field.

What is the plan to sustain and/or maintain this work after the Outdoor Heritage Funds are expended?

The Nature Conservancy maintains a portfolio of habitat enhancement sites on public lands across Northern Minnesota that is approaching 40,000 acres. We have built and maintain a state-of-the-art GIS database where we track all activities completed on a parcel. We use this data along with on the ground monitoring to determine when a parcel may need a “tending” activity like brush saw release or browse protection. We are constantly raising funds to take care of this portfolio of sites to ensure that our investments and the investments of our funding partners like LSOHC result in real and lasting improvements to habitat.

Actions to Maintain Project Outcomes

Year	Source of Funds	Step 1	Step 2	Step 3
1-7	Mix of private and public funds	Install/repair browse protection on planted seedlings	Monitor seedling survival	-
5	Mix of private and public funds	Release/cut competing brush around seedlings	-	-
7, 10	Mix of private and public funds	Check sapling condition	Prune white pines to limit blister rust	-
10-60 yrs or more	Landowner responsibility	Check stand condition	Treat invasive species; thin, treat vegetation appropriate	-

Budget

Totals

Item	Requested	AP Amount	Spent	Antic. Leverage	Received Leverage	Leverage Source	Original Total	Final Total
Personnel	\$144,300	\$144,300	\$130,500	-	-	-	\$144,300	\$130,500
Contracts	\$513,600	\$513,600	\$555,000	\$86,400	\$86,400	US Forest Service, private donors and foundations	\$600,000	\$641,400
Fee Acquisition w/ PILT	-	-	-	-	-	-	-	-
Fee Acquisition w/o PILT	-	-	-	-	-	-	-	-
Easement Acquisition	-	-	-	-	-	-	-	-
Easement Stewardship	-	-	-	-	-	-	-	-
Travel	\$6,100	\$6,100	-	-	-	-	\$6,100	-
Professional Services	-	-	-	-	-	-	-	-
Direct Support Services	\$115,600	\$115,600	\$110,900	\$115,600	\$110,900	The Nature Conservancy	\$231,200	\$221,800
DNR Land Acquisition Costs	-	-	-	-	-	-	-	-
Capital Equipment	-	-	-	-	-	-	-	-
Other Equipment/Tools	-	-	-	-	-	-	-	-
Supplies/Materials	\$278,400	\$278,400	\$261,600	\$48,600	\$48,600	US Forest Service, private donors and foundations	\$327,000	\$310,200
DNR IDP	-	-	-	-	-	-	-	-
Grand Total	\$1,058,000	\$1,058,000	\$1,058,000	\$250,600	\$245,900	-	\$1,308,600	\$1,303,900

Personnel

Position	Annual FTE	Years Working	Funding Request	Antic. Leverage	Leverage Source	Total
Forest Recovery Specialist, Project Coordination, Grants Admin	0.6	3.0	\$130,500	-	-	\$130,500

Direct Support Services

How did you determine which portions of the Direct Support Services of your shared support services is direct to this program?

DSS is based on The Nature Conservancy's Federally Negotiated rate as approved by the US Department of Interior. The proportion requested from the grant represents 50% with the other 50% contributed as leverage.

Explain any budget challenges or successes:

Overall, expenses matched budget quite closely, though there were some adjustments that were less than 10% per budget category.

Total Revenue: \$0

Revenue Spent: \$0

Revenue Balance: \$0

Of the money disclosed above, what are the appropriate uses of the money:

Output Tables

Acres by Resource Type (Table 1)

Type	Wetland (AP)	Wetland (Final)	Prairie (AP)	Prairie (Final)	Forest (AP)	Forest (Final)	Habitat (AP)	Habitat (Final)	Total Acres (AP)	Total Acres (Final)
Restore	0	0	0	0	0	0	0	0	0	0
Protect in Fee with State PILT Liability	0	0	0	0	0	0	0	0	0	0
Protect in Fee w/o State PILT Liability	0	0	0	0	0	0	0	0	0	0
Protect in Easement	0	0	0	0	0	0	0	0	0	0
Enhance	0	0	0	0	2,465	5,519	0	0	2,465	5,519
Total	0	0	0	0	2,465	5,519	0	0	2,465	5,519

Total Requested Funding by Resource Type (Table 2)

Type	Wetland (AP)	Wetland (Final)	Prairie (AP)	Prairie (Final)	Forest (AP)	Forest (Final)	Habitat (AP)	Habitat (Final)	Total Funding (AP)	Total Funding (Final)
Restore	-	-	-	-	-	-	-	-	-	-
Protect in Fee with State PILT Liability	-	-	-	-	-	-	-	-	-	-
Protect in Fee w/o State PILT Liability	-	-	-	-	-	-	-	-	-	-
Protect in Easement	-	-	-	-	-	-	-	-	-	-
Enhance	-	-	-	-	\$1,058,000	\$1,058,000	-	-	\$1,058,000	\$1,058,000
Total	-	-	-	-	\$1,058,000	\$1,058,000	-	-	\$1,058,000	\$1,058,000

Acres within each Ecological Section (Table 3)

Type	Metro / Urban (AP)	Metro / Urban (Final)	Forest / Prairie (AP)	Forest / Prairie (Final)	SE Forest (AP)	SE Forest (Final)	Prairie (AP)	Prairie (Final)	N. Forest (AP)	N. Forest (Final)	Total (AP)	Total (Final)
Restore	0	0	0	0	0	0	0	0	0	0	0	0
Protect in Fee with State PILT Liability	0	0	0	0	0	0	0	0	0	0	0	0
Protect in Fee w/o State PILT Liability	0	0	0	0	0	0	0	0	0	0	0	0
Protect in Easement	0	0	0	0	0	0	0	0	0	0	0	0
Enhance	0	0	0	0	0	0	0	0	2,465	5,519	2,465	5,519
Total	0	0	0	0	0	0	0	0	2,465	5,519	2,465	5,519

Total Requested Funding within each Ecological Section (Table 4)

Type	Metro / Urban (AP)	Metro / Urban (Final)	Forest / Prairie (AP)	Forest / Prairie (Final)	SE Forest (AP)	SE Forest (Final)	Prairie (AP)	Prairie (Final)	N. Forest (AP)	N. Forest (Final)	Total (AP)	Total (Final)
Restore	-	-	-	-	-	-	-	-	-	-	-	-
Protect in Fee with State PILT Liability	-	-	-	-	-	-	-	-	-	-	-	-
Protect in Fee w/o State PILT Liability	-	-	-	-	-	-	-	-	-	-	-	-
Protect in Easement	-	-	-	-	-	-	-	-	-	-	-	-
Enhance	-	-	-	-	-	-	-	-	\$1,058,000	\$1,058,000	\$1,058,000	\$1,058,000
Total	-	-	-	-	-	-	-	-	\$1,058,000	\$1,058,000	\$1,058,000	\$1,058,000

Target Lake/Stream/River Feet or Miles

Outcomes

Programs in the northern forest region:

- Improved availability and improved condition of habitats that have experienced substantial decline ~ *The project aimed to improve availability condition of habitats that have experienced substantial decline, including long-lived conifer habitats, some types of young forest habitats, large forest patches, and riparian habitats. We check treatment sites annually to assess habitat conditions and treatment success, and a subset of sites are monitored using a standardized protocol. Forest habitat enhancement generally requires many years and multiple treatments, but our data and site visits indicate that conditions are improving.*

Parcels

Sign-up Criteria?

No

Restore / Enhance Parcels

Name	County	TRDS	Acres	Est Cost	Existing Protection
W. Lumberjack Rd Plantation #1	Beltrami	15035232	17	\$2,185	Yes
South Boundary Red Pine Plantation #1	Beltrami	15035221	11	\$1,414	Yes
W. Mayflower Road	Beltrami	14734220	17	\$2,185	Yes
Perch Lake pit Plantation #1 #76COA	Beltrami	14935222	9	\$1,157	Yes
Strand Road	Beltrami	14935223	12	\$1,542	Yes
W. Lumberjack Rd Plantation #3	Beltrami	15035231	16	\$2,057	Yes
Goose Lake Unit 4	Cass	14129235	38	\$1,849	Yes
Oak Point Unit 2	Cass	14331224	227	\$11,050	Yes
Goose Lake Unit 3	Cass	14129235	67	\$3,261	Yes
Goose Lake Unit 2	Cass	14129235	97	\$4,722	Yes
Goose Lake Unit 1	Cass	14129226	102	\$4,965	Yes
Tanglewood Unit 1	Cass	14130230	85	\$4,138	Yes
North Two Pines U1	Cass	14529217	9	\$438	Yes
North Two Pines U3	Cass	14529216	56	\$2,726	Yes
North Two Pines U2	Cass	14529217	29	\$1,411	Yes
North Two Pines U5	Cass	14529216	40	\$1,947	Yes
Moss Lake Unit 1	Cass	14431203	130	\$6,328	Yes
Oak Point Unit 4	Cass	14331213	150	\$7,302	Yes
Bass Lake Wildlife Opening	Cass	14131233	4	\$194	Yes
Goose Lake Unit 5	Cass	14129235	63	\$3,066	Yes
Shingobee Wildlife Opening	Cass	14131218	6	\$292	Yes
Sugarloaf South	Cook	05805216	102	\$39,215	Yes
Temperance Midway	Cook	05904229	2	\$768	Yes
Cascade River Picnic	Cook	06002201	1	\$384	Yes
Temperance Park Entrance	Cook	05904232	1	\$128	Yes
Sugarloaf Three	Cook	05805216	35	\$4,500	Yes
Sugarloaf South - Small	Cook	05805216	25	\$3,214	Yes
Cascade Park West ROW	Cook	06002216	1	\$440	Yes
Cascade Park West	Cook	06002216	2	\$881	Yes
Temperance East	Cook	05904229	4	\$1,762	Yes
Temperance Park Nw	Cook	05904231	2	\$881	Yes
Leo 11	Cook	06301225	26	\$6,912	Yes
Leo 10	Cook	06301225	6	\$1,595	Yes
Temperance Park Entrance	Cook	05904232	1	\$384	Yes
242	Cook	05805209	19	\$2,442	Yes
Sugarloaf Low	Cook	05805216	9	\$1,157	Yes
Cascade River Picnic	Cook	06002201	1	\$128	Yes
Sugarloaf North	Cook	05805208	28	\$3,600	Yes
Sugarloaf West	Cook	05805217	39	\$5,014	Yes
Temperance Midway	Cook	05904229	2	\$257	Yes
West Winnie Unit 1b	Itasca	14629234	46	\$2,239	Yes
Wagner	Itasca	14928215	15	\$730	Yes
West Winnie Unit 2a	Itasca	14629235	25	\$1,217	Yes
Sunken Lake RX Unit 2b	Itasca	14727216	33	\$1,606	Yes
Sunken Lake RX Unit 1b	Itasca	14727216	28	\$1,363	Yes
Sunken Lake RX Unit 2a	Itasca	14727216	75	\$3,651	Yes
Sunken Lake RX Unit 1a	Itasca	14727216	91	\$4,430	Yes
Day Brook River	Itasca	05923226	20	\$7,689	Yes
HWY 29 Elm Site	Itasca	14825205	7	\$340	Yes

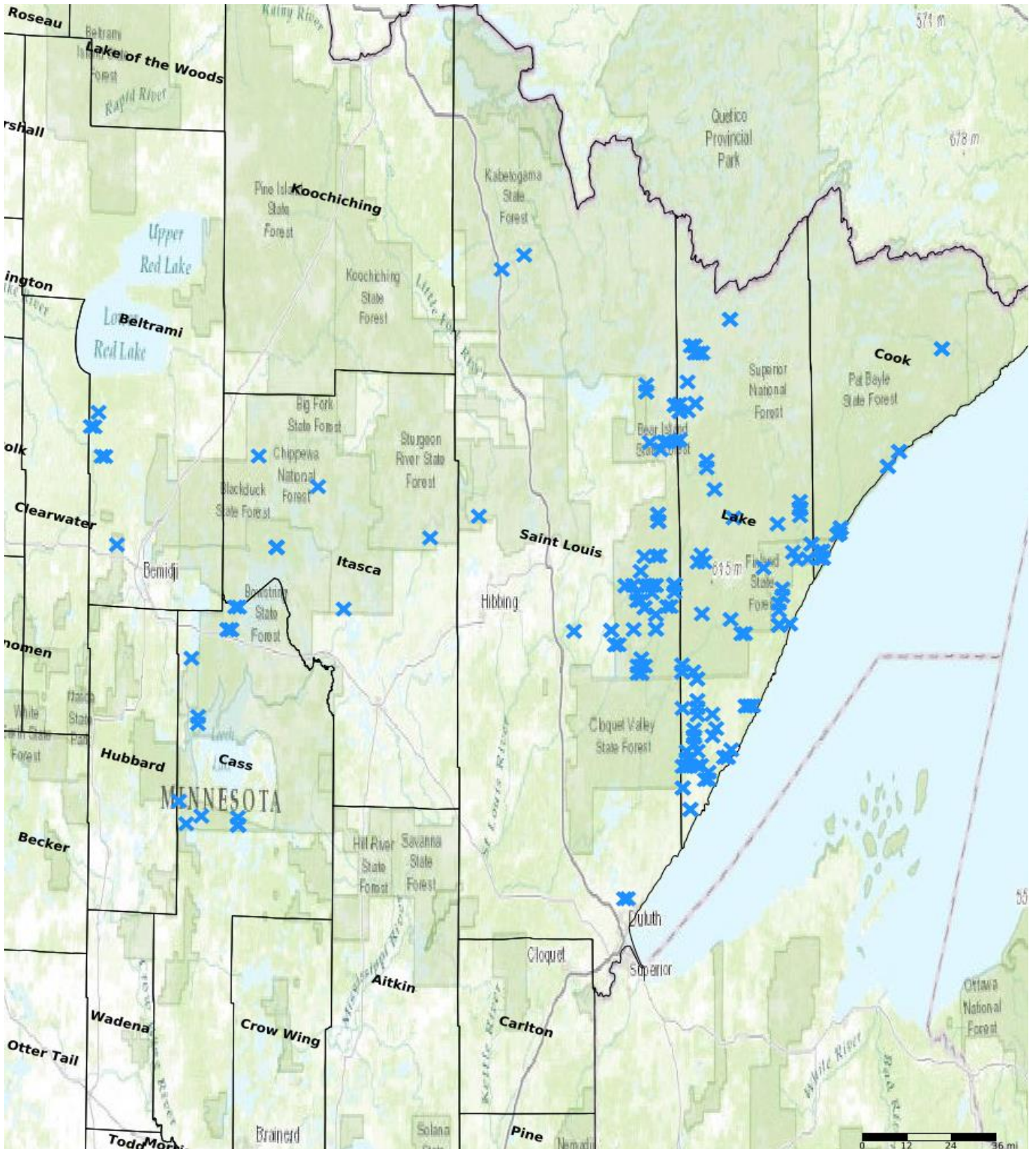
Island Lake Wildlife Opening	Itasca	05727213	34	\$1,655	Yes
Shoepack Patch East	Lake	05906209	3	\$1,340	Yes
521	Lake	05511202	12	\$3,190	Yes
520	Lake	05511202	9	\$2,392	Yes
360	Lake	05611234	39	\$10,369	Yes
County Line 211	Lake	05611230	16	\$4,254	Yes
County Line 248	Lake	05611231	33	\$8,774	Yes
County Line 250	Lake	05611231	40	\$10,635	Yes
1321	Lake	05410216	14	\$3,722	Yes
Dunnigan West / Dunnigan Riparian Campsite	Lake	06010205	7	\$900	Yes
Hwy 11 and Co 2 Tracks DNR	Lake	05711224	79	\$10,157	Yes
Silver Creek Pines Block 1	Lake	05310217	29	\$3,728	Yes
1213	Lake	05609201	8	\$1,028	Yes
Beaver East Roadside	Lake	05609202	6	\$771	Yes
Kangas MFR 13	Lake	06211231	14	\$1,800	Yes
Kangas MFR 27	Lake	06211231	16	\$2,057	Yes
Kangas MFR 23	Lake	06211231	30	\$3,857	Yes
Kangas MFR 16	Lake	06211230	14	\$1,800	Yes
Fernberg LC South	Lake	06311214	58	\$7,457	Yes
Fernberg LC North	Lake	06311214	43	\$5,528	Yes
517	Lake	05311201	36	\$4,628	Yes
961	Lake	05411232	7	\$900	Yes
960	Lake	05411233	33	\$4,242	Yes
959	Lake	05311205	4	\$514	Yes
958	Lake	05311206	1	\$128	Yes
957	Lake	05311205	2	\$257	Yes
956	Lake	05311205	2	\$257	Yes
955	Lake	05310208	19	\$2,442	Yes
954	Lake	05310218	19	\$2,442	Yes
953	Lake	05411233	14	\$1,800	Yes
952	Lake	05311202	10	\$1,285	Yes
1095	Lake	05411229	2	\$257	Yes
Ridgepole 39 NE Tip	Lake	05811212	2	\$257	Yes
Ridgepole 39	Lake	05811214	39	\$5,014	Yes
Co Gaps Hwy 3	Lake	05410210	6	\$771	Yes
Co Gaps Big Noise	Lake	05510233	11	\$1,414	Yes
Stewart River	Lake	05411226	59	\$7,585	Yes
Britton Pit Rotary	Lake	05411233	2	\$257	Yes
Britton Pit Roadside	Lake	05311204	5	\$642	Yes
LCF West	Lake	05311219	5	\$642	Yes
LCF East	Lake	05311219	1	\$128	Yes
703	Lake	05409231	6	\$771	Yes
704	Lake	05410236	72	\$9,257	Yes
Birch Lake North Unit 8	Lake	06111219	18	\$2,314	Yes
Lillian SE	Lake	05709229	39	\$5,014	Yes
519	Lake	05211204	7	\$900	Yes
518	Lake	05211204	5	\$642	Yes
477	Lake	05411215	11	\$1,414	Yes
476	Lake	05411222	20	\$2,571	Yes
475	Lake	05411215	16	\$2,057	Yes
474	Lake	05411215	11	\$1,414	Yes
478	Lake	05411215	42	\$5,400	Yes
461	Lake	05511235	46	\$5,914	Yes
Outward Bound East	Lake	06211226	14	\$1,800	Yes
Outward Bound West	Lake	06211226	2	\$257	Yes
Kawishiwi Campground North	Lake	06211233	8	\$1,028	Yes
Farm Lake	Lake	06211209	20	\$2,571	Yes
460	Lake	05508230	4	\$514	Yes

391	Lake	05810218	19	\$2,442	Yes
382	Lake	05511223	22	\$2,828	Yes
383	Lake	05511226	39	\$5,014	Yes
356	Lake	05411210	28	\$3,600	Yes
338	Lake	05509225	40	\$5,142	Yes
281	Lake	05409231	43	\$5,528	Yes
246	Lake	05409231	3	\$385	Yes
245	Lake	05409231	10	\$1,285	Yes
16	Lake	05409229	33	\$4,242	Yes
70	Lake	05509225	27	\$3,471	Yes
68	Lake	05508229	7	\$900	Yes
Kennedy Creek North	Lake	05707236	11	\$6,975	Yes
Kennedy Creek South	Lake	05707236	7	\$4,832	Yes
Murphy City	Lake	05808223	17	\$7,596	Yes
Shoepack Patch Add 2	Lake	05906209	1	\$446	Yes
Shoepack Patch Add 1	Lake	05906209	6	\$2,681	Yes
Shoepack Fuels West	Lake	05906209	2	\$893	Yes
Shoepack Fuels	Lake	05906204	11	\$4,915	Yes
Shoepack Patch West	Lake	05906209	13	\$5,809	Yes
Shoepack Patch South	Lake	05906209	15	\$6,703	Yes
Shoepack Patch Middle	Lake	05906209	8	\$3,575	Yes
Manitou River Co 7	Lake	05806217	21	\$9,384	Yes
Earl West Hardwoods	Lake	05806207	21	\$8,073	Yes
Greenwood Fire Resto - Stony River Plantation	Lake	05909216	39	\$14,994	Yes
Little Marais Rd	Lake	05707216	11	\$4,229	Yes
Eckbeck View East	Lake	05707233	5	\$1,922	Yes
Thunderbird	Lake	05906216	80	\$30,757	Yes
Mattson Road Block	Lake	05707233	17	\$7,490	Yes
Lindstrom Creek	Lake	05707233	14	\$6,168	Yes
Lindstrom North	Lake	05707233	1	\$440	Yes
Eckbeck View West	Lake	05707233	38	\$16,744	Yes
Pickeral Lake 4 / Line Gen 4	Lake	06311224	6	\$771	Yes
Pickeral Lake / Line Gen	Lake	06310219	2	\$257	Yes
Old Drum South	Lake	05311205	15	\$1,928	Yes
Dunnigan / Dunnigan Riparian	Lake	06010208	15	\$1,928	Yes
Moose Lake Riparian Unit 3	Lake	06409228	2	\$257	Yes
Moose Lake Riparian Unit 2	Lake	06409228	5	\$642	Yes
Caribou Silver South	Lake	05806214	70	\$9,000	Yes
East General Grade WP	Lake	05907221	30	\$3,857	Yes
Cty Hwy 8 Stand 13	Lake	05806201	7	\$900	Yes
1345	Lake	05806201	20	\$2,571	Yes
Nice View	Lake	05511230	18	\$2,314	Yes
Gilpi S31	Lake	06311223	30	\$3,857	Yes
Glipi East	Lake	06310219	20	\$2,571	Yes
Stub Lake	Lake	06311215	30	\$3,857	Yes
Happy Oaks South	Lake	05707210	4	\$514	Yes
Dubbins Co North	Lake	05707221	14	\$1,800	Yes
Happy Oaks North	Lake	05707203	10	\$1,285	Yes
Stony River / Stoney River Riparian	Lake	06010227	12	\$1,542	Yes
Round Beaver 18	St. Louis	05812235	37	\$9,837	Yes
Round About	St. Louis	05812235	14	\$4,421	Yes
Deer Forest West	St. Louis	05614207	6	\$3,804	Yes
SLC Big Bundle	St. Louis	05713202	71	\$18,877	Yes
Ox Slr County North	St. Louis	05813233	2	\$1,268	Yes
Ox Slr County East	St. Louis	05813234	1	\$634	Yes
Cranberry	St. Louis	05813209	74	\$19,675	Yes
Sisters Spruce Island	St. Louis	05716232	6	\$1,595	Yes
Skibo Mill	St. Louis	05813236	31	\$8,242	Yes

Skibo Hill Spruce	St. Louis	05713208	10	\$3,844	Yes
Mesaba Trunk Rd	St. Louis	05921212	10	\$3,844	Yes
Skibo Mill	St. Louis	05813236	91	\$11,700	Yes
Deer Forest	St. Louis	05614208	111	\$42,675	Yes
Little Shiver Creek West	St. Louis	05714236	54	\$20,761	Yes
Moose Line RGMA East	St. Louis	05715236	3	\$1,153	Yes
Bat Rush 2021	St. Louis	05813220	51	\$19,607	Yes
Checkerboard North	St. Louis	05813212	58	\$15,421	Yes
Hush Puppy 1	St. Louis	05814234	50	\$13,294	Yes
Hush Puppy 2	St. Louis	05814234	10	\$2,658	Yes
Stone Lake 74	St. Louis	05812207	26	\$6,912	Yes
Dollar Bill 6	St. Louis	05613220	14	\$3,722	Yes
Twin Lakes South	St. Louis	06213215	6	\$771	Yes
Twin Lakes Middle	St. Louis	06213215	13	\$1,671	Yes
Twin Lake North	St. Louis	06213210	12	\$1,542	Yes
Ox Slr County South	St. Louis	05813233	2	\$1,268	Yes
Bundle Lake Road	St. Louis	05713224	42	\$18,506	Yes
Nevada 15	St. Louis	05912218	34	\$14,981	Yes
Nevada 11	St. Louis	05912218	31	\$13,659	Yes
Moose Line RGMA West	St. Louis	05715236	21	\$9,253	Yes
Skibo Hill Birch	St. Louis	05713207	48	\$21,150	Yes
Nevada 14	St. Louis	05912218	29	\$12,778	Yes
Nevada 7 West	St. Louis	05912207	6	\$2,643	Yes
Nevada 7 East	St. Louis	05912207	29	\$12,778	Yes
Dollar Bill 13	St. Louis	05613229	5	\$1,329	Yes
Dollar Bill 14	St. Louis	05613228	7	\$1,861	Yes
Dollar Bill 8	St. Louis	05613230	72	\$19,143	Yes
Dollar Bill 10	St. Louis	05613231	27	\$7,178	Yes
Dollar Bill 12	St. Louis	05613232	22	\$5,849	Yes
Dollar Bill 15	St. Louis	05613232	18	\$4,785	Yes
Dollar Bill 18	St. Louis	05613232	39	\$10,369	Yes
SQUADRON PU 8	St. Louis	06518208	23	\$6,115	Yes
Forbidden Pine	St. Louis	05713206	26	\$3,342	Yes
Clapper Road E	St. Louis	05713216	15	\$1,928	Yes
Birch South Unit 1 South	St. Louis	06112229	10	\$1,285	Yes
Birch South Unit 1 Mid South	St. Louis	06112221	7	\$900	Yes
Birch South Unit 1 Mid North	St. Louis	06112221	7	\$900	Yes
Birch South Unit 1 North	St. Louis	06112221	2	\$257	Yes
Birch South Unit 2 / Birch Lake South NHR2 East	St. Louis	06112222	5	\$642	Yes
Bird Lake	St. Louis	05814236	37	\$4,757	Yes
Clapper Road W	St. Louis	05713216	13	\$1,671	Yes
Ox Sale	St. Louis	05813234	26	\$16,487	Yes
Birch South Unit 3 Middle / Birch Lake South NHR3	St. Louis	06112224	13	\$1,671	Yes
Fairbanks East	St. Louis	05713236	18	\$8,043	Yes
Birch Lake Narrows Riparian	St. Louis	06113223	11	\$1,414	Yes
Deer Forest Middle	St. Louis	05614207	10	\$6,902	Yes
DARK WING PU 1	St. Louis	06519220	8	\$2,127	Yes
Round About	St. Louis	05712202	17	\$5,368	Yes
Round About	St. Louis	05812235	2	\$631	Yes
Round About	St. Louis	05812235	16	\$5,052	Yes
Round About	St. Louis	05812235	6	\$1,894	Yes
Round About	St. Louis	05812235	11	\$3,473	Yes
Morse Code_397	St. Louis	05712216	5	\$642	Yes
Morse Code_396	St. Louis	05712215	6	\$771	Yes
Kangas MFR 21	St. Louis	06212225	20	\$2,571	Yes
Kangas MFR 17	St. Louis	06212225	24	\$3,085	Yes

Kangas MFR 20	St. Louis	06212225	11	\$1,414	Yes
Kangas MFR 26	St. Louis	06212225	7	\$900	Yes
SLR Skibo County	St. Louis	05813235	17	\$2,185	Yes
Howard Gnesen	St. Louis	05014204	6	\$4,141	Yes
Fairbanks West	St. Louis	05713236	66	\$41,851	Yes
Hartley NW Hills	St. Louis	05014203	7	\$4,438	Yes

Parcel Map



- Protect in Easement
- ▲ Protect in Fee with PILT
- Protect in Fee W/O PILT
- ★ Restore
- ✕ Enhance
- ⊕ Other